



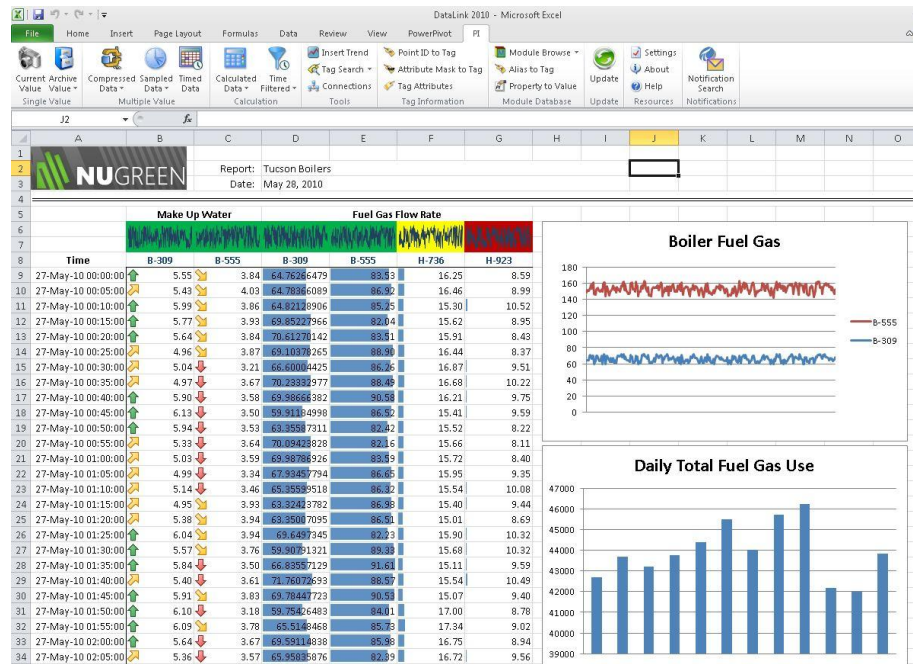
# PI DataLink 2012 - Asset Data Meets Excel

Presented by **Matt Ziegler, Product Manager**

# PI DataLink

Add-in to Microsoft Excel to retrieve PI System data, create reports, perform calculations, and do analysis in a familiar environment.

OSIsoft's most popular product by installations.



# New Features in 2012

- Integration with PI Asset Framework

*Easier to find data, re-use work with asset relative displays, use natural language, and view the world based on assets.*

- Search

*Browse or search the entire PI System to find exactly what you're looking for*

- Excel 2010 64-bit support

*32-bit or 64-bit. PI DataLink will work.*



PLEASE  
PAUSE  
FOR  
DEMO

# PI DataLink 2012 *BETA* Program

- Closed beta program
- For more information about signing up e-mail [pidatalink2012beta@osisoft.com](mailto:pidatalink2012beta@osisoft.com)
- Selected participants can begin downloads the week of May 14<sup>th</sup>.

# Integrated PI AF Experience

You already know how to use it ...

Book2 - Microsoft Excel

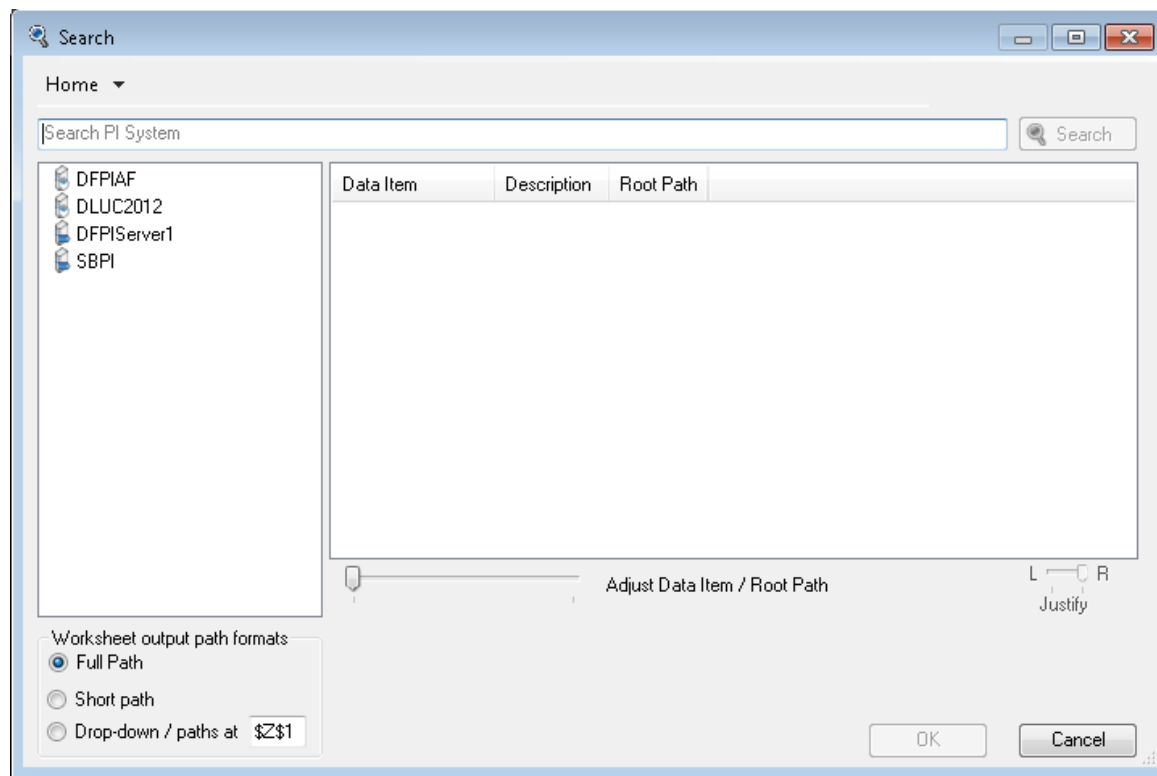
File Home Insert Page Layout Formulas Data Review View Load Test PowerPivot **PI** Team

Current Value Single Value Archive Value Compressed Data Multiple Value Sampled Data Timed Data Calculated Data Calculation Time Filtered Asset Search Search Update Update Settings About Help Resources

B17

	A	B	C	D	E
1	AF Attribute				
2	\\SL3ITPIAF01\ERP\San Leandro Facilities\HVAC\East AC Unit Temperatures Mixed Air	East AC Unit	08-Mar-11 17:59:27	59.594 °F	
3	\\SL3ITPIAF01\ERP\San Leandro Facilities\HVAC\East AC Unit Temperatures Leaving Air	East AC Unit	08-Mar-11 18:00:51	51.242 °F	
4	\\SL3ITPIAF01\ERP\San Leandro Facilities\HVAC\East AC Unit Temperatures Outdoor Air	East AC Unit	08-Mar-11 17:59:27	59.594 °F	
5	\\SL3ITPIAF01\ERP\San Leandro Facilities\HVAC\East AC Unit Temperatures Return Air	East AC Unit	08-Mar-11 18:00:51	72.608 °F	
6	\\SL3ITPIAF01\ERP\San Leandro Facilities\HVAC\West AC Unit Temperatures Mixed Air	West AC Unit	01-Jan-70 00:00:00	0 °F	
7	\\SL3ITPIAF01\ERP\San Leandro Facilities\HVAC\West AC Unit Temperatures Leaving Air	West AC Unit	08-Mar-11 18:00:52	52.682 °F	
8	\\SL3ITPIAF01\ERP\San Leandro Facilities\HVAC\West AC Unit Temperatures Outdoor Air	West AC Unit	08-Mar-11 18:00:48	63.734 °F	
9	\\SL3ITPIAF01\ERP\San Leandro Facilities\HVAC\West AC Unit Temperatures Return Air	West AC Unit	08-Mar-11 18:00:50	73.562 °F	

# New PI DataLink Search Experience



# Backwards Compatibility

- Continue to utilize existing workbooks
- AF Server NOT required.
- Use Attributes and/or PI Tags. Your choice.



# Supported Platforms

## Office Versions

- Excel 2007
- Excel 2010 (32-bit)
- Excel 2010 (64-bit)
- No longer supports Excel 2003 (or earlier)
  - Best PI AF Experience requires new Excel UI - Ribbon + Task Panes
  - Ending MS support for 2003
    - Mainstream Ended: April 14, 2009
    - Extended Support Ends: April 8, 2014

## Operating Systems

- Windows XP (SP3) – Windows 7
- Windows Server 2003 (SP2) – 2008R2
- NET Framework 4.x required

# Caveats

- Trend Control
  - 32-bit: Display & Update Existing Displays.
  - 64-bit: Not Available. Trends display as static images and do not update.
- Legacy Functions - MDB and Tag-only Functions
  - Refresh and Recalculate.
  - Ribbon items moved to legacy add-in

# PI DataLink Server 2012

- Release coming in 2013
- Designed to support upcoming SharePoint 15  
And PI DataLink 2012

# AF Support Details

- PI point data reference
- Formula data reference
- Custom data reference
- Table data reference
- Write values to the PI System via PI AF

# Other Notables

- Improved Install Experience
  - Single 32/64-bit install kit
  - All pre-requisites are included
  - More reliable and easier to customize for large deployments
- Recent Highlights
  - Update Function
  - Internationalization and Local Language support

# Matt Ziegler

[mziegler@osisoft.com](mailto:mziegler@osisoft.com)

Product Manager

OSIsoft, LLC

# PI DataLink 2012 *BETA* Program

- Closed beta program
- For more information about signing up e-mail [pidatalink2012beta@osisoft.com](mailto:pidatalink2012beta@osisoft.com)
- Selected participants can begin downloads the week of May 14<sup>th</sup>.



# THANK YOU

Brought to you by  **OSIsoft.**