



OSIsoft®  
**REGIONAL**  
**SEMINARS** 2013  
The **Power** of **Data**



# Evolution of PI System Access

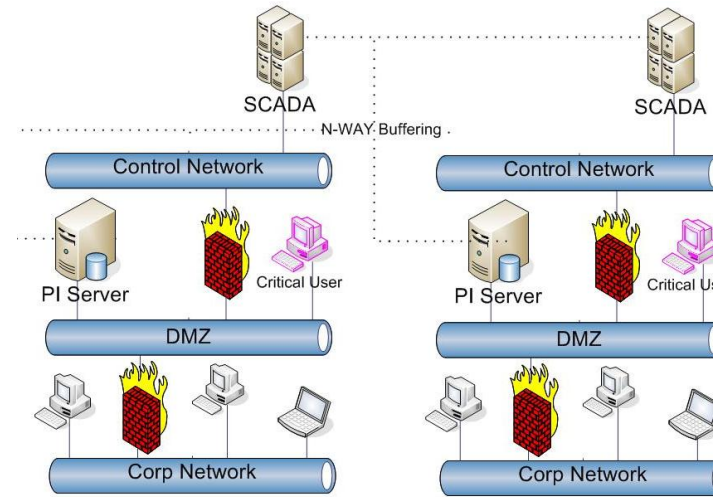
Presented by **Abdo Y. Saad**



# Evolution of PI System Access

Foolproof systems don't take into account the ingenuity of fools.

Gene Brown



- Secure access
- Regulatory Compliance
- Small footprint

- Protected networks
- Clear rules and processes
- Achieve more with less

- Segregate networks
- Separate Merchant group
- Optimize No. of servers

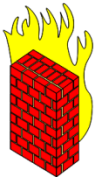
# Agenda

- *What I mean by...*
- *Various PI Server configurations*
- *Questions*



# What I mean by...

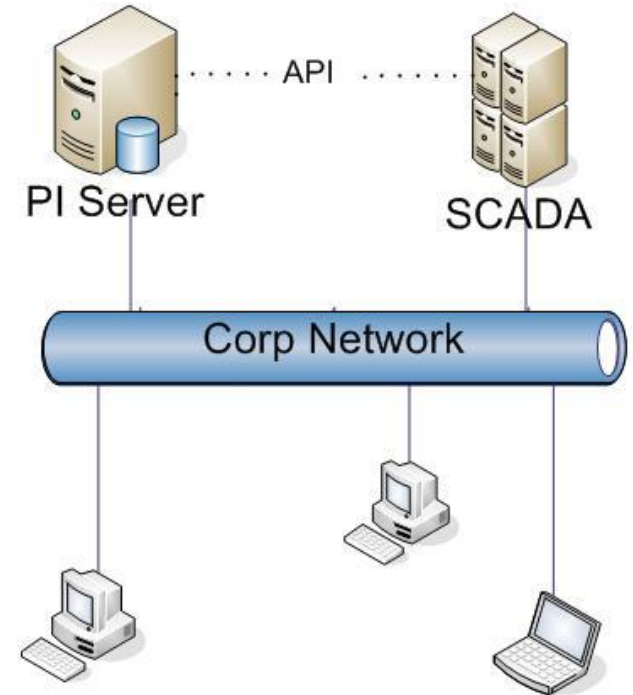
- *Corporate network*
- *Control network*
- *SCADA*
- *Dotted line*



# Access to PI Servers

## At the beginning

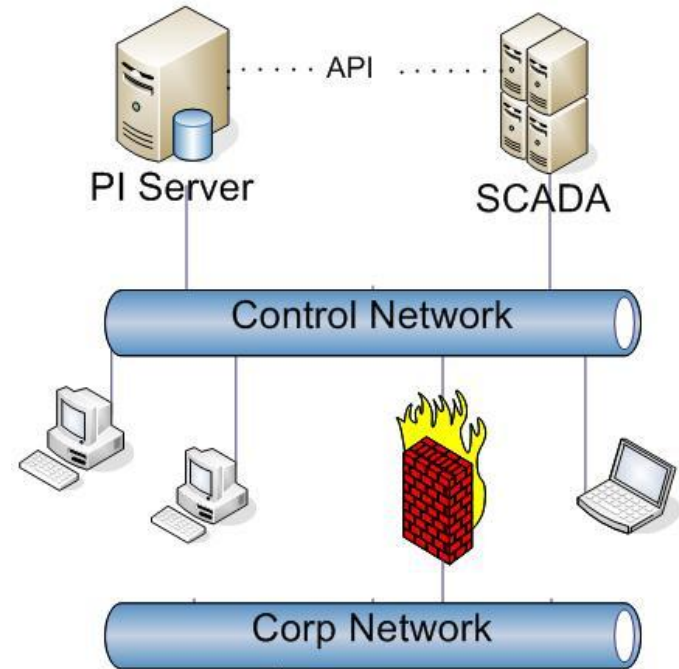
- *Control network and corporate network all the same*
- *Not much concern about security*
- *No regulatory compliance*



# Access to PI Servers

## Separation of Control network

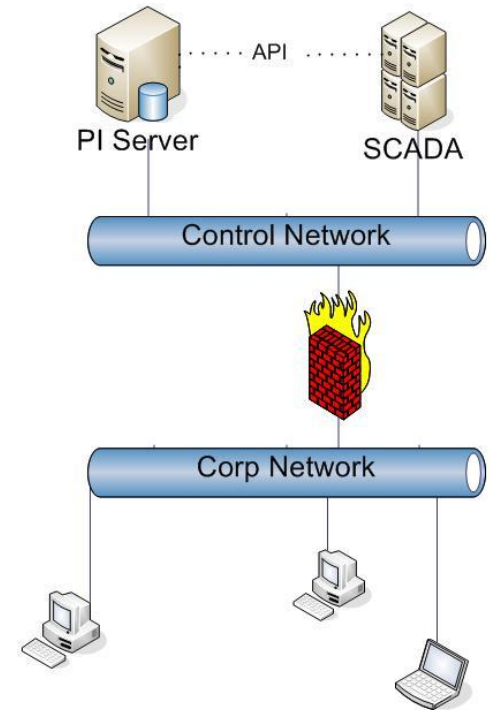
- *PI Servers remained on Control network*
- *Users still on Control network*
- *Archived data not available to corporate users*



# Access to PI Servers

## Providing PI data outside control centers

- *PI Servers remained on Control network*
- *PI access opened up to corporate users*
- *Archived data made available for corporate groups*

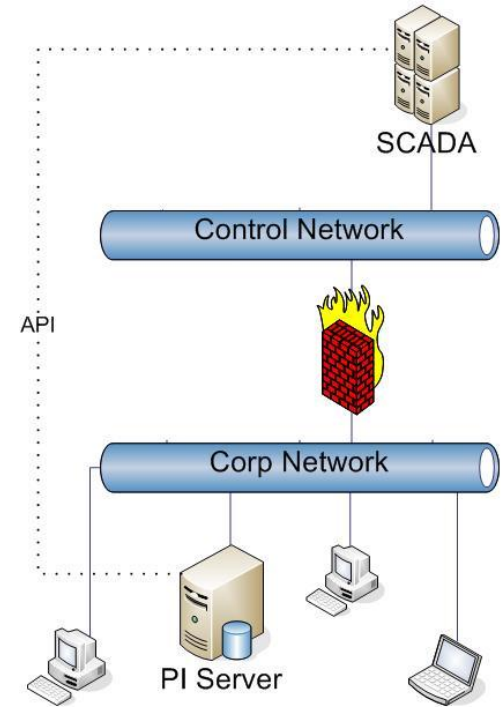




# Access to PI Servers

## Concern about access to Control network

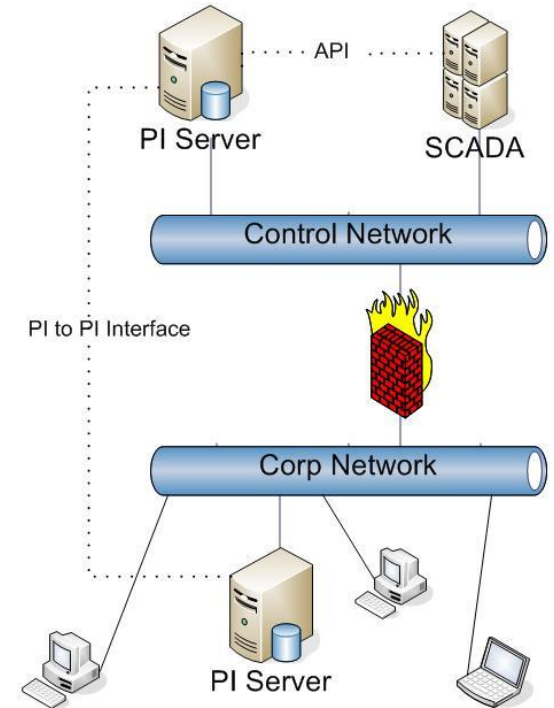
- *PI server moved outside secure perimeter*
- *Change transparent to users*



# Access to PI Servers

## CIP happens

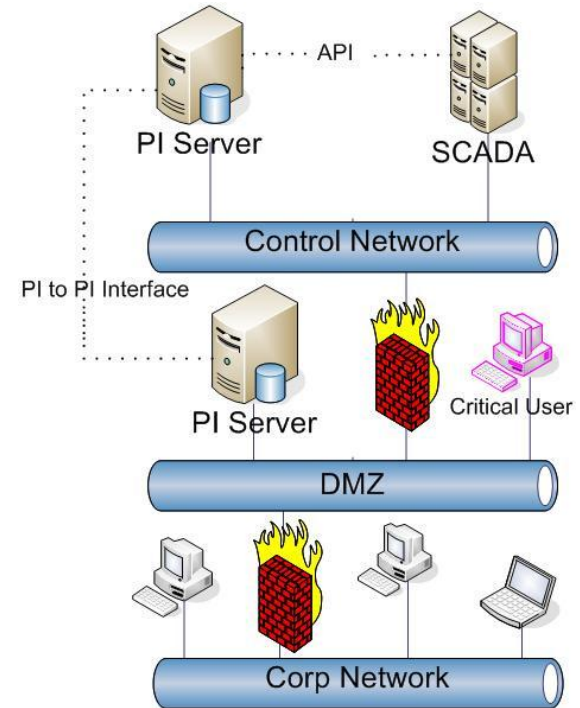
- *PI server inside secure perimeter*
- *PI server outside secure perimeter*
- *User access from Corporate network only (avoid tracking user eligibility to access critical system)*
- *Helps regarding concern about buffering of data*



# Access to PI Servers

## Concern about network separation

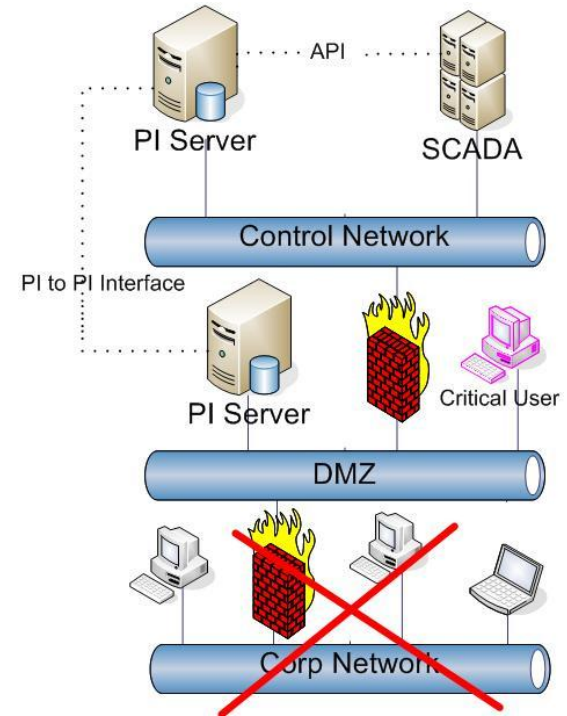
- *PI server on DMZ*
- *PI access still available if corporate is separated*
- *Critical users given access through DMZ access point (firewall)*



# Access to PI Servers

## Concern about network separation

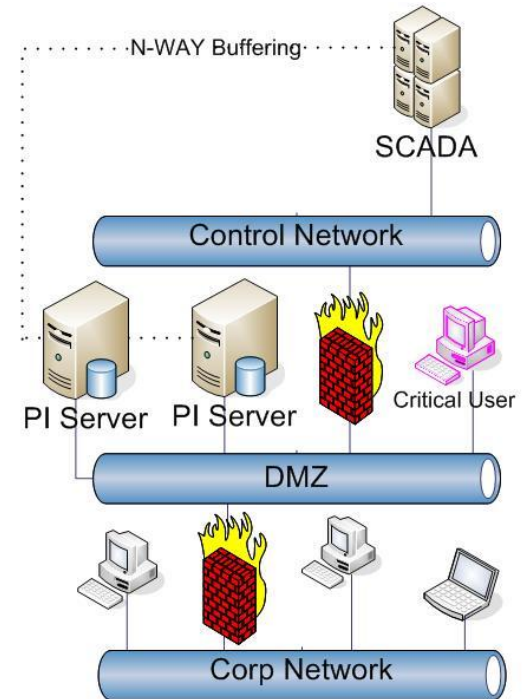
- *PI server on DMZ*
- *PI access still available if corporate is separated*
- *Critical users given access through DMZ access point (firewall)*



# Access to PI Servers

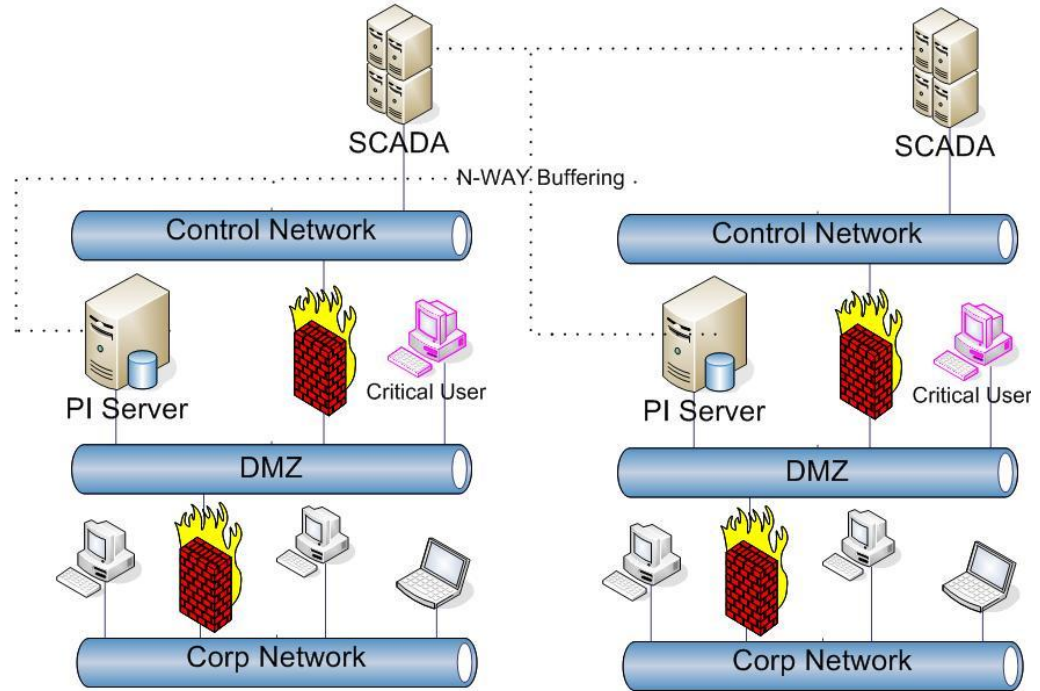
## Redundancy & smaller footprint

- *Redundancy on Corporate network*
- *Data identical on both servers (N-Way Buffering)*
- *Access to corporate users through DMZ*
- *Less Maintenance*



# Access to PI Servers

## Full picture





# THANK YOU

Brought to you by  **OSIsoft.**