



OSIsoft®  
**REGIONAL**  
**SEMINARS**  
The **Power** of **Data**



# **Find Opportunities, Gain Insights, Generate Value – what you can do with access to PI System data**

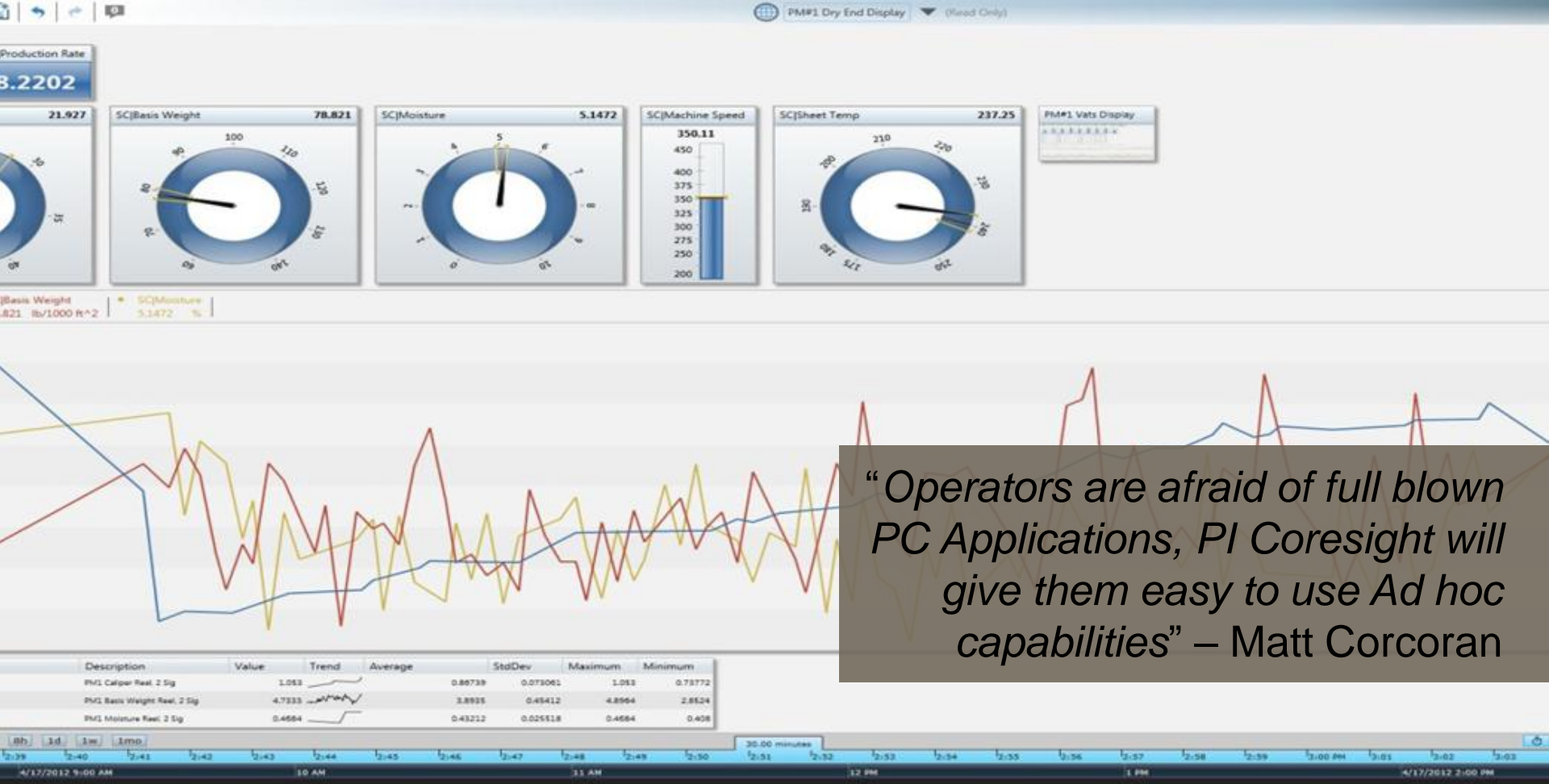
**Presented by Ales Soudek**  
**OSIsoft Product Manager**

“Data is your only weapon for improved performance.”

Dr. Don Paul, Vice President CTO, Chevron

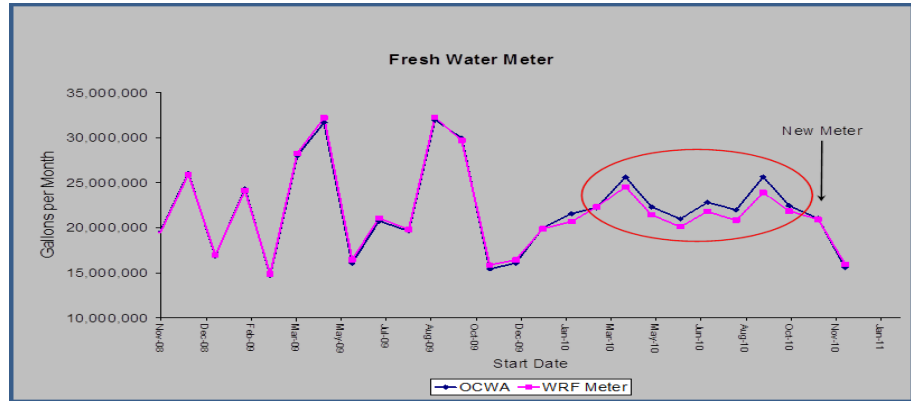
# RockTenn

- Needed to bring Users together
  - Interesting use cases emerging from mills
  - Corporate provided some ideas but Mills were interested in developing their own
- PI System Power User Group
  - Build cross Mill relationships
  - Promote idea sharing
  - Friendly competition promotes learning and initiative



*“Operators are afraid of full blown PC Applications, PI Coresight will give them easy to use Ad hoc capabilities” – Matt Corcoran*

# RockTenn Water Bill in Excel



- Real time water usage stored in the PI System and analyzed in Excel using PI DataLink
- Found a faulty water meter installed by Utility company
- Overcharging for Effluent treatment due to a build up on the Effluent meter

# RockTenn Equipment Run Time

PI ProcessBook - [BR Basket, Rotor and Plate Days.PDI]

File Edit View Insert Tools Draw Arrange Window Help

Boxboard Stock Prep - Extraction Plate, Rotor & Screen Basket Run Days

Equipment Target Days Actual Days Change Date Comment

Filler Pulper Extraction Plate  
Filler Pulper Rotor Time  
Turbo Extraction Plate Time  
Turbo Rotor Time  
Filler North Primary Screen  
Filler South Primary Screen  
Filler Secondary Screen Basket  
Filler Tertiary Screen Basket  
Liner Pulper Extraction Plate  
Liner Pulper Rotor Time  
Liner Barrier Screen Basket  
Liner Primary Screen Basket  
Liner Secondary Screen Basket  
Hydrapurge Extraction Plate  
Hydrapurge Rotor Time

Microsoft Excel - BR Equipment Run Times.xls

File Edit View Insert Format Tools Data Window PI PI-SMT SPC XL Help

Boxboard Stock Prep -- Extraction Plate, Rotor & Screen Basket Run Days

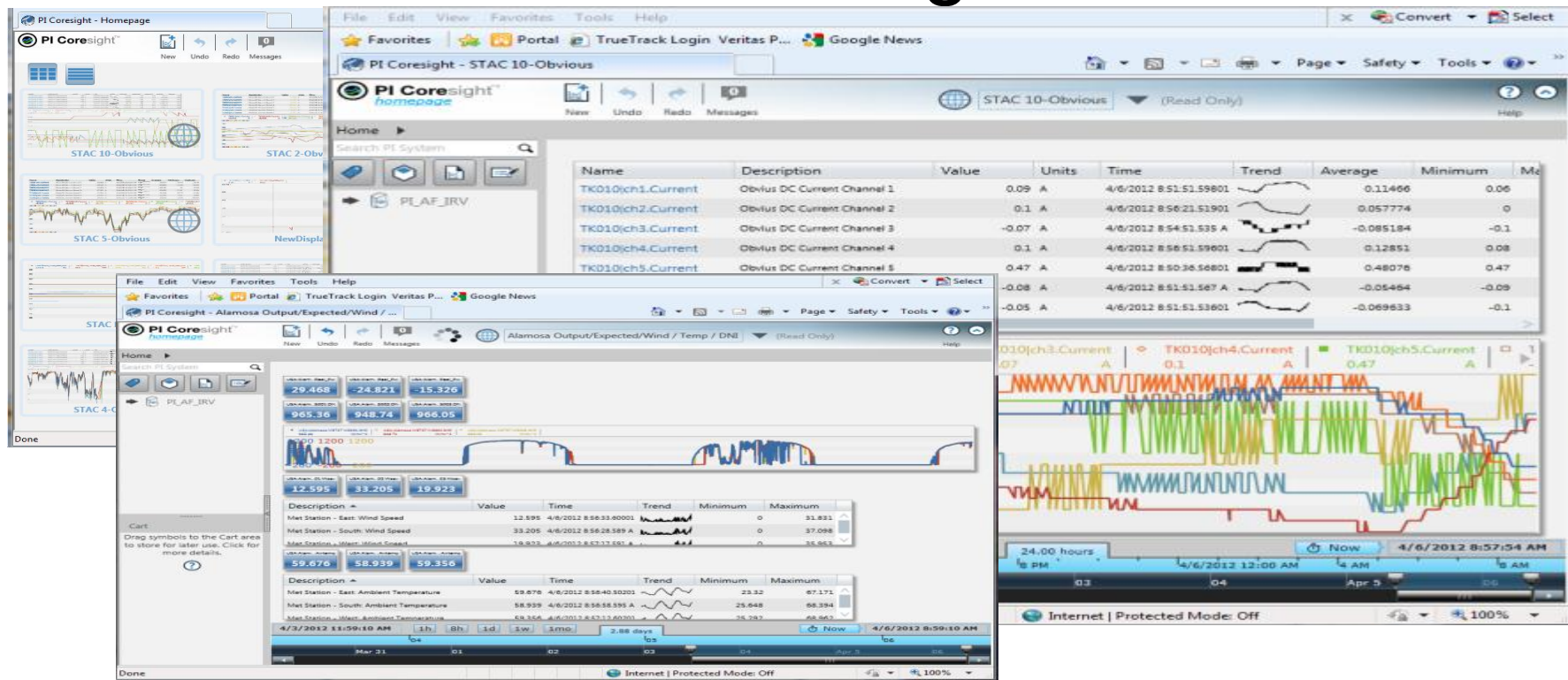
	Equipment	Target Days	Actual Days	Last Change Date	Comment	Next Change Assuming Continuous Operation
3	Filler Pulper Extraction Plate Time	270	272	4/21/2010	Date updated by JBrahs	1/30/2011
4	Filler Pulper Rotor Time	270	272	4/21/2010	Date updated by JBrahs	1/30/2011
5	Turbo Extraction Plate Time	135	25	1/7/2011	Holes in extraction plate, shut down to change	5/22/2011
6	Turbo Rotor Time	135	25	1/7/2011	Date updated by jbrahs	5/22/2011
7	Filler North Primary Screen Basket Time	360	4	2/24/2010	From the Secondary	1/22/2012
8	Filler South Primary Screen Basket Time	360	24	1/6/2011	Date updated by jbrahs	1/2/2012
9	Filler Secondary Screen Basket Time	360	189	6/15/2010	Date updated by nlarson	7/21/2011
10	Filler Tertiary Screen Basket Time	270	85	11/3/2010	Date updated by nlarson	8/5/2011
11	Liner Pulper Extraction Plate Time	360	114	10/5/2010	Date updated by jbrahs	10/5/2011
12	Liner Pulper Rotor Time	360	114	10/5/2010	Date updated by jbrahs	10/5/2011
13	Liner Barrier Screen Basket Time	360	187	7/20/2010	Date updated by jbrahs	7/23/2011
14	Liner Primary Screen Basket Time	360	272	4/26/2010	Date updated by jbrahs	4/30/2011
15	Liner Secondary Screen Basket Time	360	318	3/10/2010	Date updated by JBrahs	3/15/2011
16	Hydrapurge Extraction Plate Time	180	90	10/29/2010	Date updated by jbrahs	5/1/2011
17	Hydrapurge Rotor Time	180	90	10/29/2010	Date updated by jbrahs	5/1/2011

# Amonix Remote Asset Monitoring

- Needed to monitor performance of remote equipment, starting with nothing
- Wanted an easy, low cost data system
  - Low Cost of maintenance
  - Easy to maintain from Remote (unmanned) locations
  - Full end-to-end system

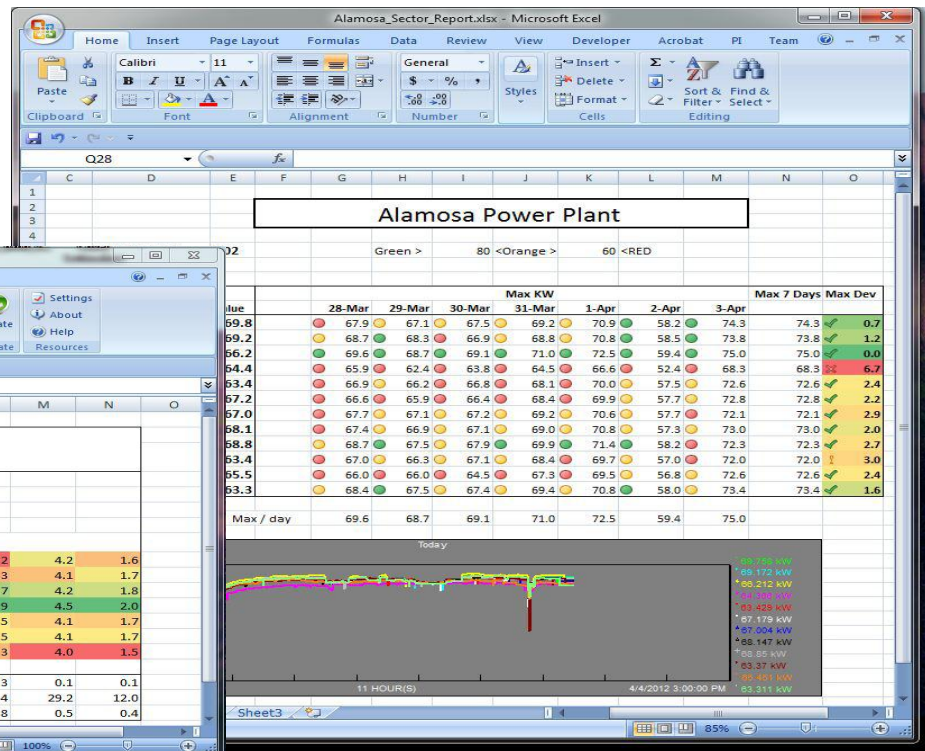
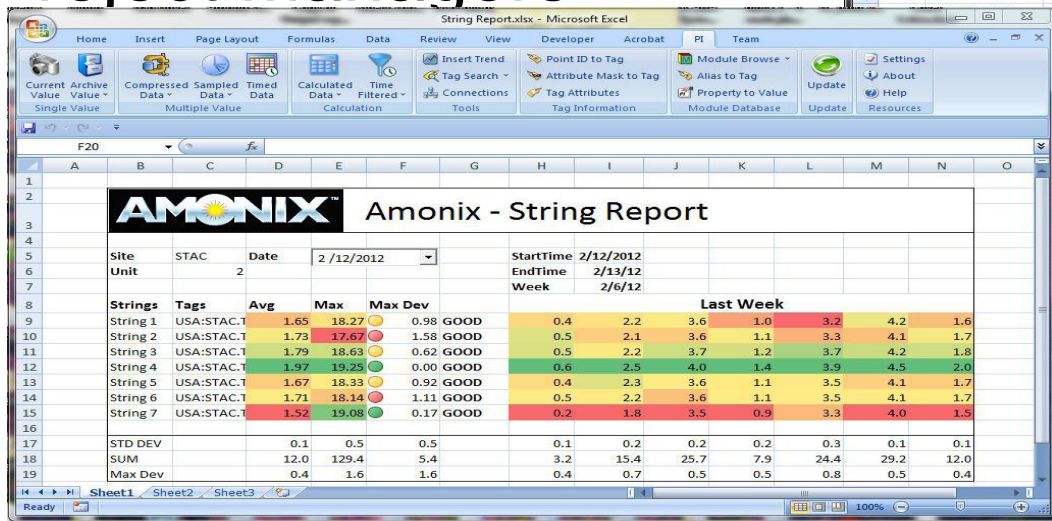


# Amonix Field monitoring



# Amonix Standard Reporting

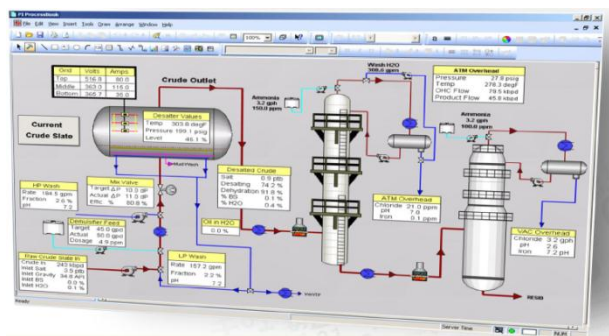
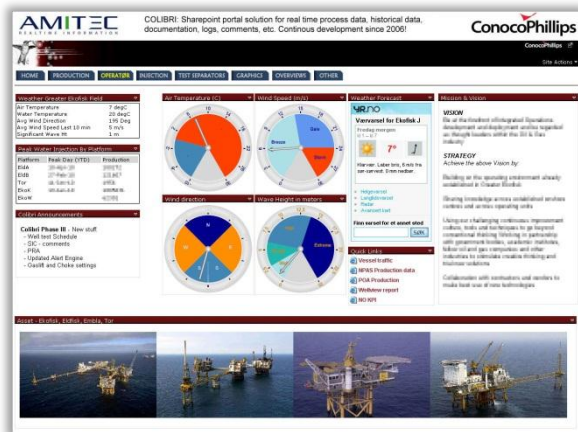
- Engineers
- Project Managers



# Amonix Expertise

- New to the PI System
- No formal training
- Made use of YouTube learning channel

# Pick the Tool that Best Suits



Equipment	Target Days	Actual Days	Last Change Date	Comment	Next Change Assuming Continuous Operation
1 Filter Pulper Extraction Plate Time	270	421/2010	4/21/2010	Date updated by Jbraha	1/20/2011
2 Filter Pulper Rotor Time	270	421/2010	4/21/2010	Date updated by Jbraha	1/20/2011
3 Turbo Extraction Plate Time	135	1/7/2011	1/7/2011	Holes in extraction plate, shut down to change	5/22/2011
4 Turbo Rotor Time	135	1/7/2011	1/7/2011	Date updated by Jbraha	5/22/2011
5 Filter North Primary Screen Basket Time	360	324/2010	11/2/2010	Date updated by Jbraha	1/20/2012
6 Filter South Primary Screen Basket Time	360	186/2011	1/6/2011	Date updated by Jbraha	1/20/2012
7 Filter Tertiary Screen Basket Time	360	8/5/2010	8/5/2010	Date updated by Jbraha	7/21/2011
8 Filter Pulper Extraction Plate Time	270	11/1/2010	11/1/2010	Date updated by Jbraha	8/6/2011
9 Filter Pulper Rotor Time	270	11/1/2010	11/1/2010	Date updated by Jbraha	8/6/2011
10 Filter Secondary Screen Basket Time	360	10/6/2010	10/6/2010	Date updated by Jbraha	10/6/2011
11 Filter Primary Screen Basket Time	360	7/20/2010	7/20/2010	Date updated by Jbraha	7/20/2011
12 Filter Tertiary Screen Basket Time	360	4/26/2010	4/26/2010	Date updated by Jbraha	4/26/2011
13 Filter Secondary Screen Basket Time	360	3/10/2010	3/10/2010	Date updated by Jbraha	3/10/2011
14 Filter Primary Screen Basket Time	360	10/26/2010	10/26/2010	Date updated by Jbraha	10/26/2011
15 Filter Tertiary Screen Basket Time	360	10/26/2010	10/26/2010	Date updated by Jbraha	10/26/2011

# PI WebParts

- You have a SharePoint environment and want to make use of its support by IT
- Your users need to see a collection of information from different sources, including the PI System
- Your users don't want to build new displays
- You want to provide navigation that guides different audiences to the content they need

# PI ProcessBook

- Your users want to build their own graphical displays

Or

- You have a group that builds displays for others
- Your users need to monitor how the process is progressing
- Your users need customized behavior or layout

# PI DataLink

- Your users expect to work with numbers
- Your users want to build their own reports
- Your users are comfortable with Excel
- Your users want Excel charts





PLEASE  
PAUSE  
FOR  
DEMO



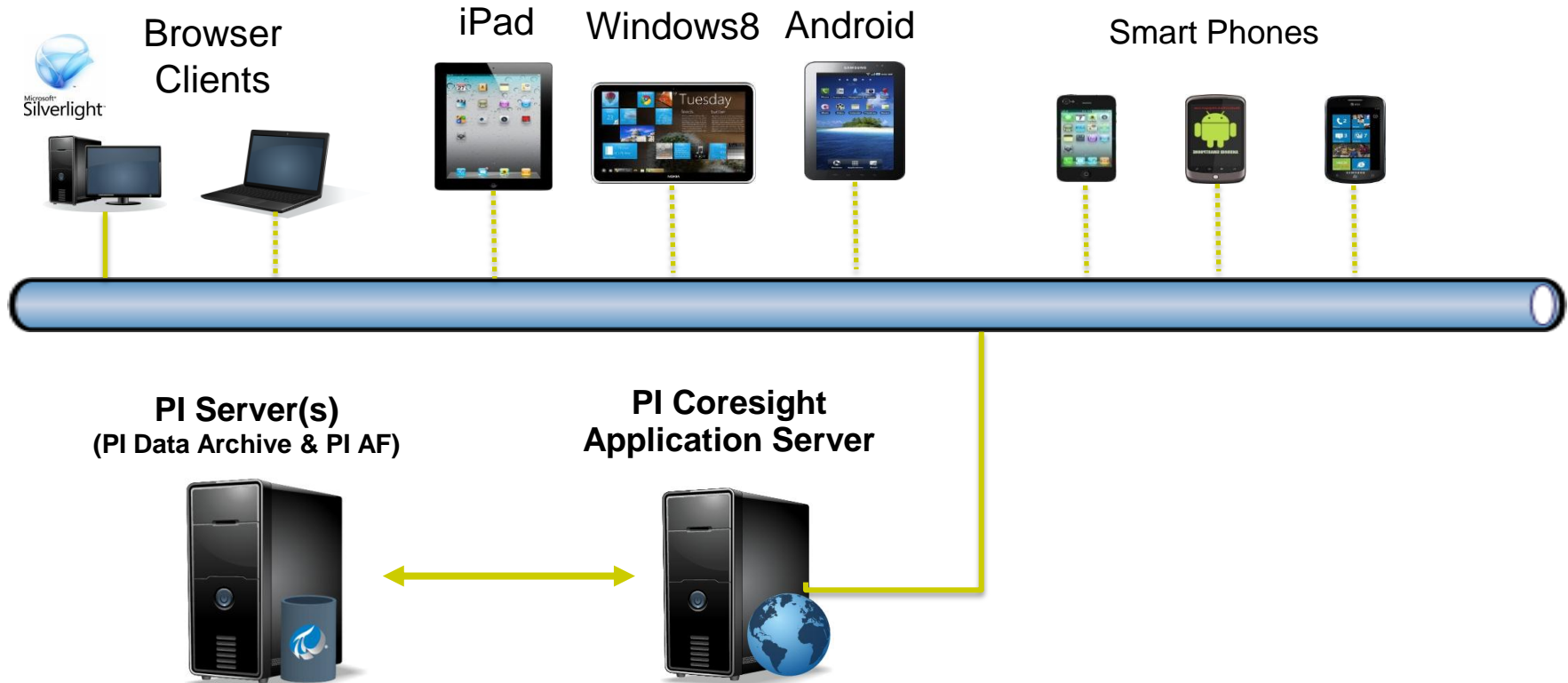
# PI Coresight

- Your users need to explore data quickly or look at quick displays built by others
- Your users don't want to install anything
- You have no SharePoint environment

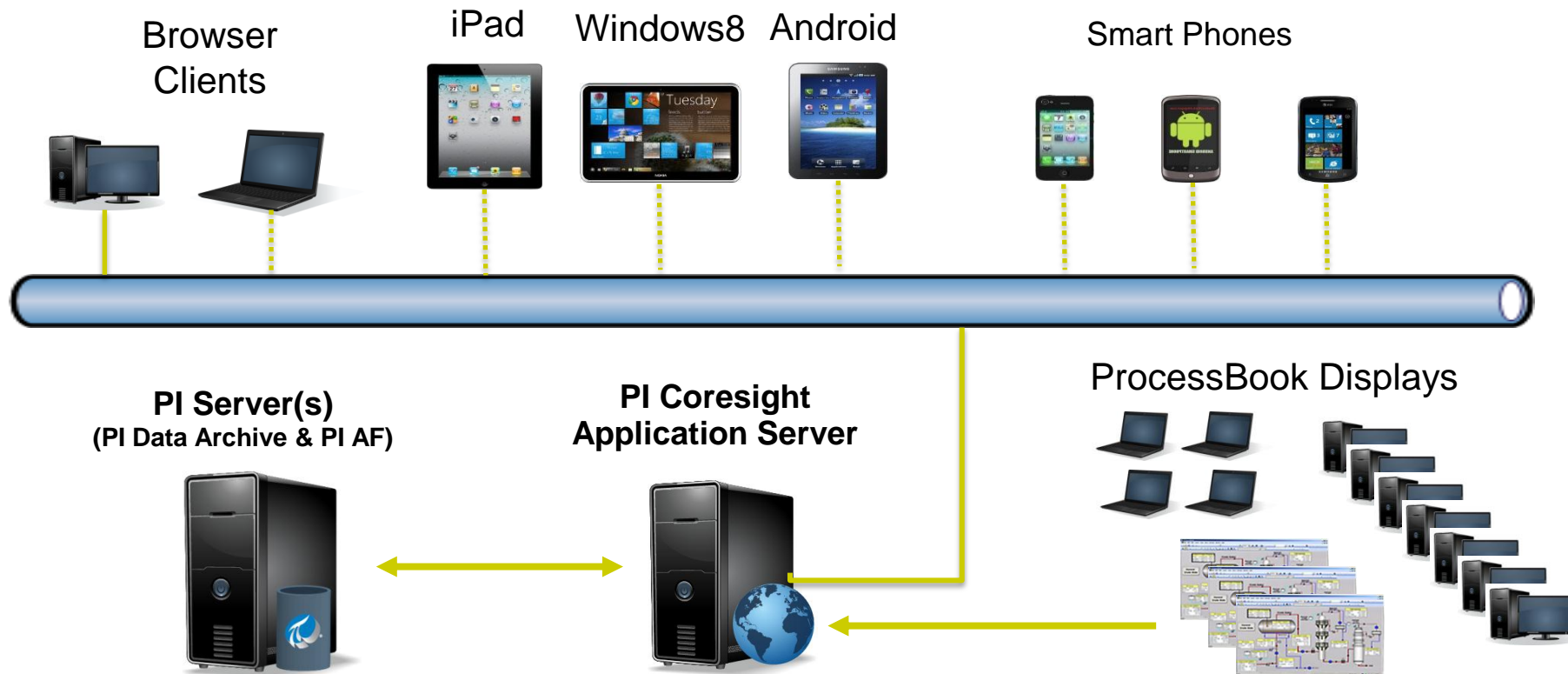


PLEASE  
PAUSE  
FOR  
DEMO

# PI Coresight with Mobile Clients



# PI Coresight – ProcessBook Display Viewer



# ProcessBook Display Viewer– Target Audience

- Plant / Operations Management
  - See overview of how plant/utility is running
  - Failures, Efficiency, KPIs, Actual vs Forecast
- Process Engineers / Corporate Planners
  - View operator screens away from plant
  - Use troubleshooting displays you already have
- Maintenance
  - Troubleshooting
  - Calibration
- Anyone who needs to see existing displays!





# THANK YOU

Brought to you by  **OSIsoft.**