



OSIsoft®
REGIONAL
SEMINARS
The **Power** of **Data**



PI System Roadmap – Evolving the PI System

Presented by **Yung Wallace, Center of Excellence Engineer**

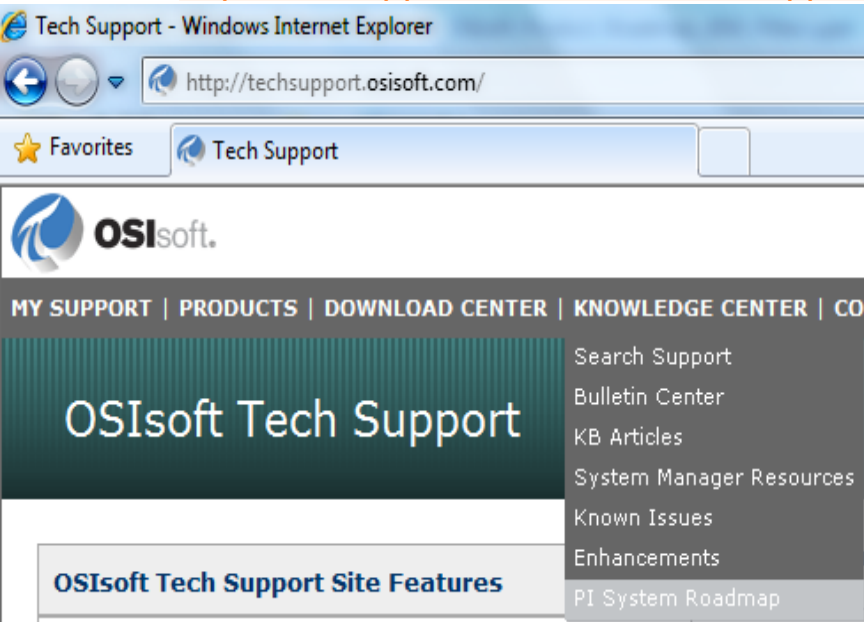
Agenda and Expectations

- This talk assumes:
 - You know the PI System basics
 - You have heard about the PI System 2012 wave of products
 - You want to hear about what is coming to the PI System in the 6-18 month horizon
- Very few specific dates
- All information is subject to change
- We want your feedback and suggestions!

Stay Up-To-Date on the Web

- PI System Roadmap on OSIsoft Technical Support Site

<http://techsupport.osisoft.com/techsupport/NonTemplates/roadmap.aspx>



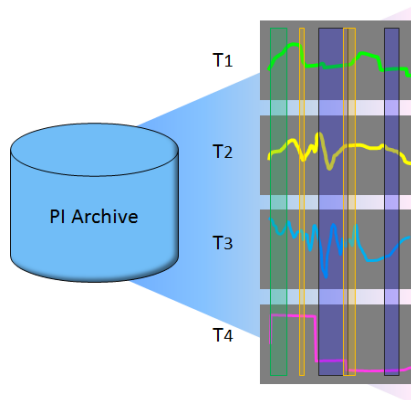
| PI System Roadmap | | | | | | | | |
|---|---------|---------|---------|---------|---------|---------|-------------------|-------------------|
| Welcome Yung Sign Out | | | | | | | | |
| Hover your cursor over the icons to display project summaries. Click the icons for more detailed information. | | | | | | | | |
| 29-Jan-2013 Major release Minor release Service Pack older newer | | | | | | | | |
| Featured Products | Q1 2012 | Q2 2012 | Q3 2012 | Q4 2012 | Q1 2013 | Q2 2013 | Q3 2013 - Q4 2013 | Q1 2014 - Q2 2014 |
| CLIENT View more | Q1 2012 | Q2 2012 | Q3 2012 | Q4 2012 | Q1 2013 | Q2 2013 | Q3 2013 - Q4 2013 | Q1 2014 - Q2 2014 |
| PI ProcessBook | | | | | | | | |
| PI ActiveView | | | | | | | | |
| PI DataLink | | | | | | | | |
| PI DataLink Server | | | | | | | | |
| PI Manual Logger | | | | | | | | |
| PI WebParts | | | | | | | | |
| PI Coresight | | | | | | | | |
| PI Coresight Mobile | | | | | | | | |
| DATA ACCESS View more | Q1 2012 | Q2 2012 | Q3 2012 | Q4 2012 | Q1 2013 | Q2 2013 | Q3 2013 - Q4 2013 | Q1 2014 - Q2 2014 |
| PI JDBC | | | | | | | | |
| PI ODBC | | | | | | | | |
| PI OLEDB | | | | | | | | |
| PI OLEDB Enterprise | | | | | | | | |
| PI OPC DA/HDA Server | | | | | | | | |
| PI SDK | | | | | | | | |
| PI Web Services | | | | | | | | |
| PI AF SDK | | | | | | | | |
| SERVER View more | Q1 2012 | Q2 2012 | Q3 2012 | Q4 2012 | Q1 2013 | Q2 2013 | Q3 2013 - Q4 2013 | Q1 2014 - Q2 2014 |

PI System Themes - Future



Asset-Centric PI

Manage data via
Asset context –
Reuse many times



Event Frames

Identify and use
important events
and related data



Mobile

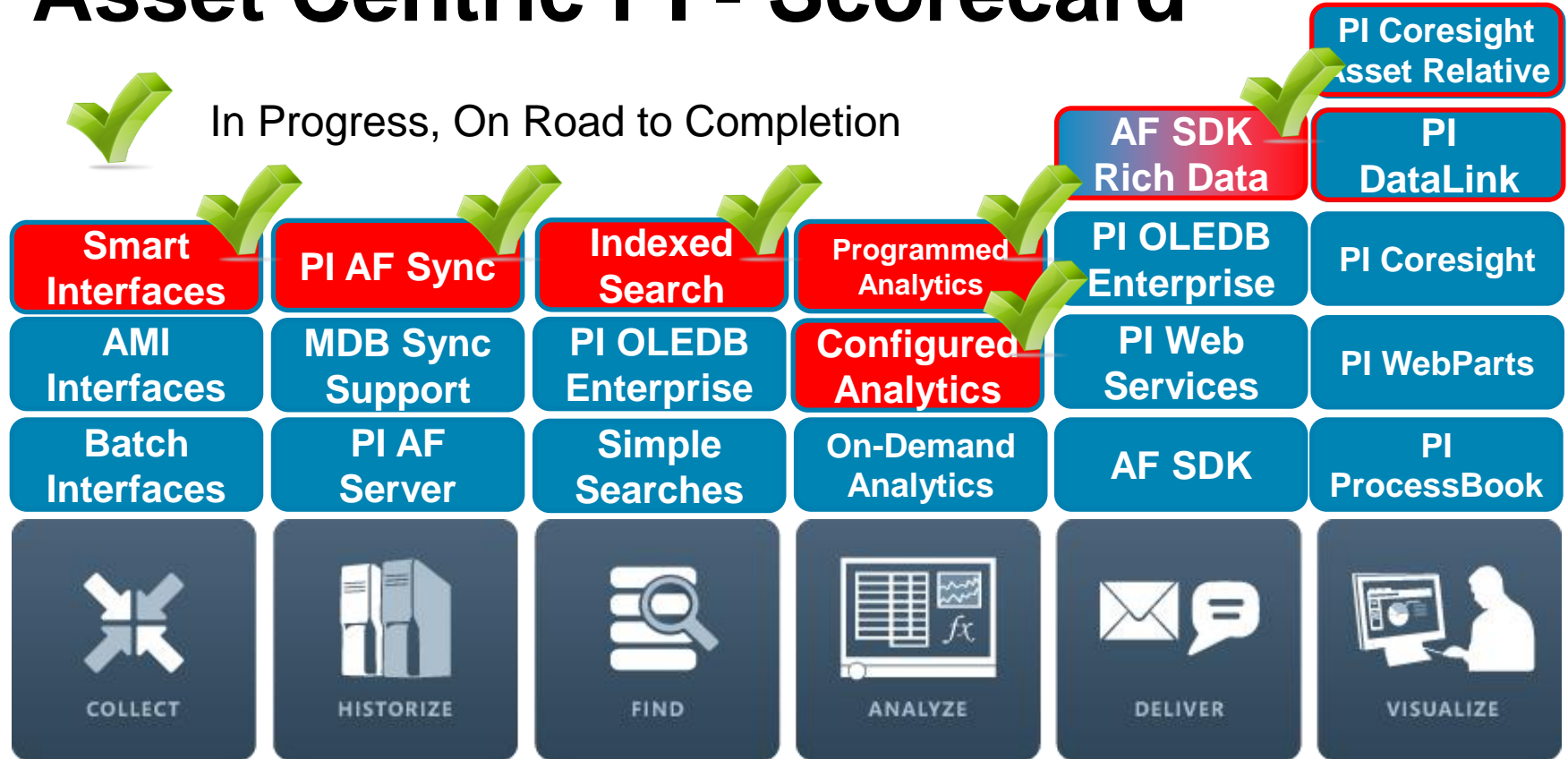
Many Devices
Touch Centric
Role Focused



Cloud

More Data
Access Anywhere
Trans-Enterprise

Asset Centric PI - Scorecard

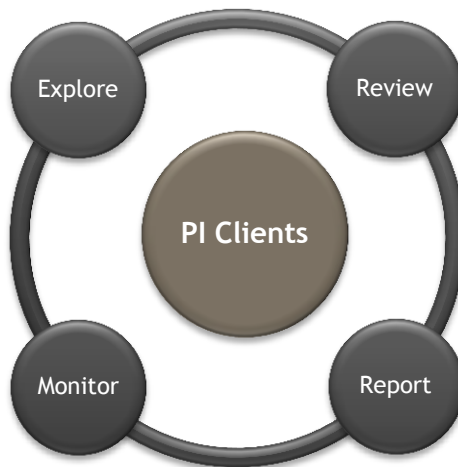


Visualization Landscape

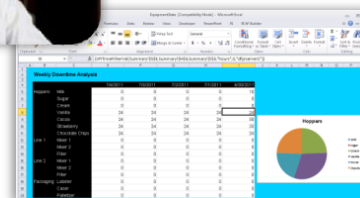
PI Coresight:
Ad Hoc Analysis & Collaboration



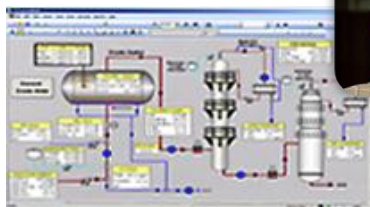
PI WebParts: Composite Apps, Shared broadly



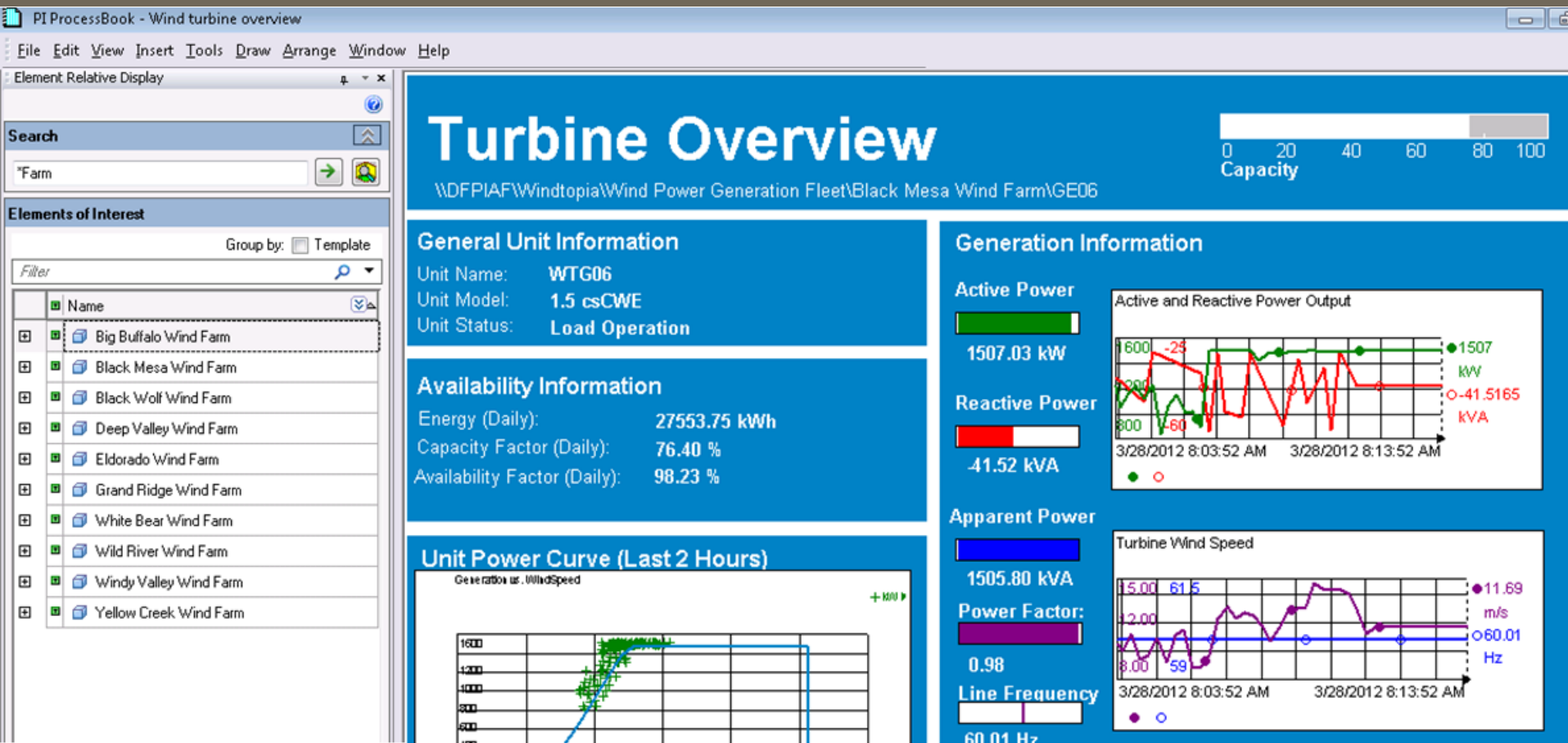
PI DataLink:
Reporting and table based analytics in Microsoft Excel



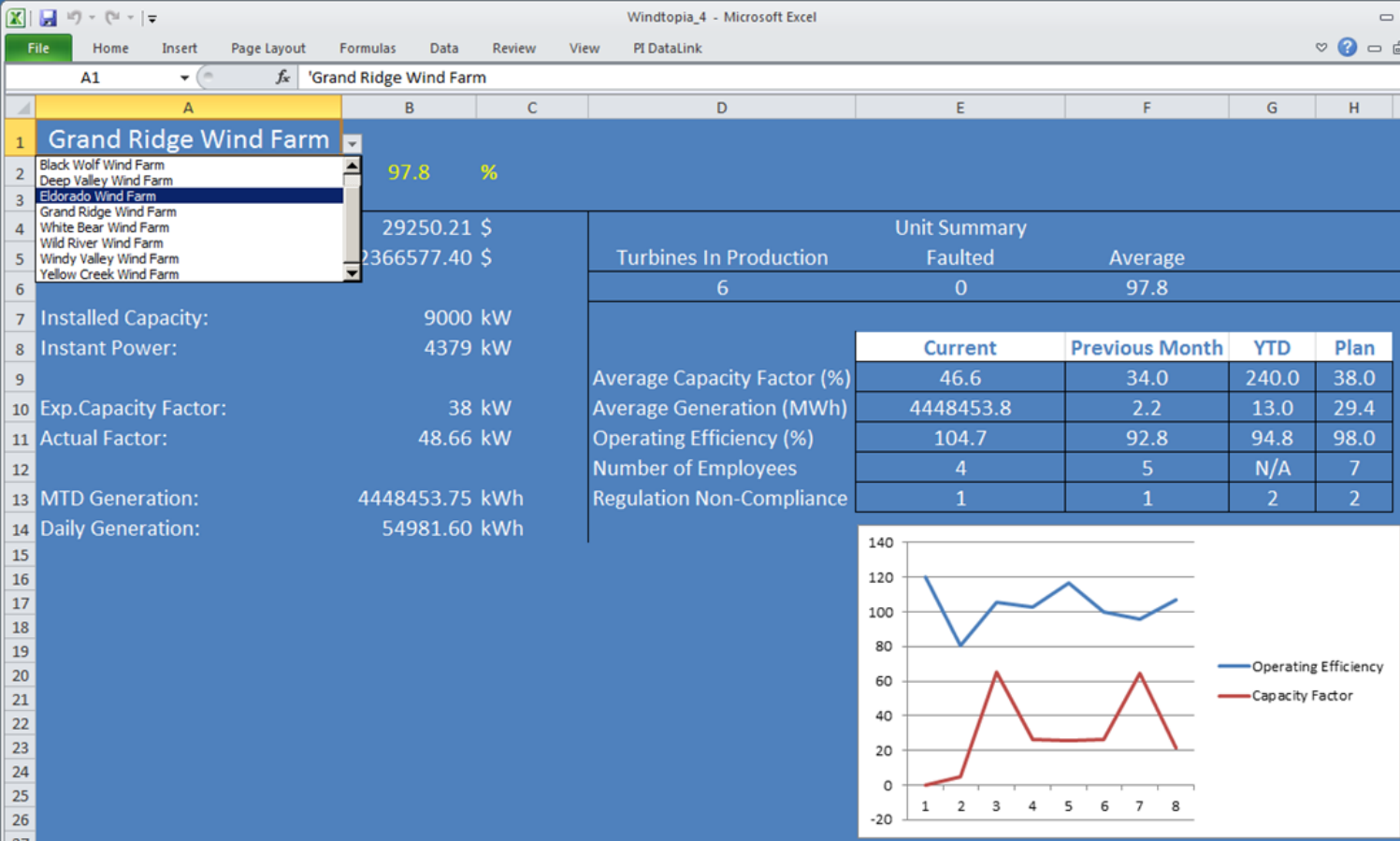
PI ProcessBook:
Display authoring and Process monitoring



Asset-centric displays in PI ProcessBook 2012



Asset-relative reports in PI DataLink 2013



Consolidate and share with PI WebParts



B-045

B-235

Ex01

Ex02

DT45

Data Items

DT45|Event Frame Name

DT45|Asset Name

DT45|Duration

DT45|Template

DT45|myPIKPI.max

DT45|Temp.avg

Time Range

Start Time: 12/20/2011 11:22:07 AM

End Time: 12/20/2011 12:12:57 PM

DT46

DT47

XYZ146

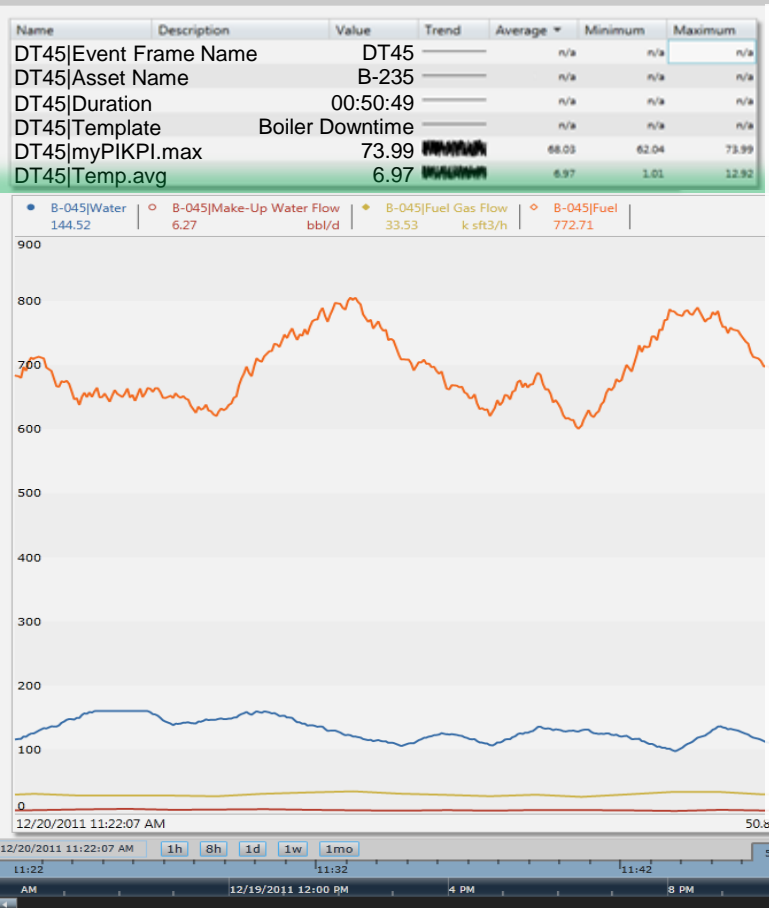
Ex03

Ex04

Search

Related Assets (16)

Related Events (8)



PI Coresight™

Related Events

- **Discover related events** on your asset.
- **View the event's related data** in a table.
- **Analyze your event** on a trend with the related process data of your asset.

Released PI Coresight 2012

AF to AF Scenarios

- Implement corporate standards
- Ensure commonality across enterprise
- Configuration changes, updates
- Event Frames and data to support analysis and KPIs

Corporate HQ



Templates





Project Abacus

Configured and Programmed
Calculations for PI AF

Project Abacus Use Case

Extruding Process

Boiler Efficiency = $\text{AVG}(\text{B1}..\text{Bn})$

Boiler1

Flow Out

Fuel Flow Rate

Efficiency = $(\text{Flow Out} / \text{Fuel Flow Rate} * 3.14)$

Boiler2

Flow Out

Fuel Flow Rate

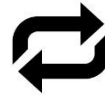
Efficiency

Boiler3

Flow Out

Fuel Flow Rate

Efficiency



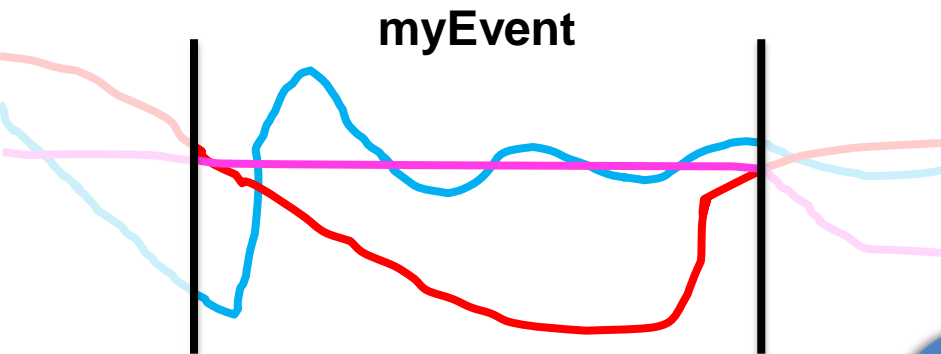
Boiler
Template



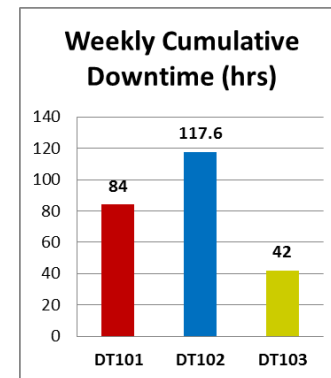
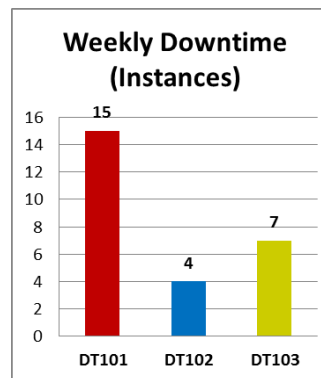
Or myProgrammedCalc (Flow Out, Fuel Flow Rate)



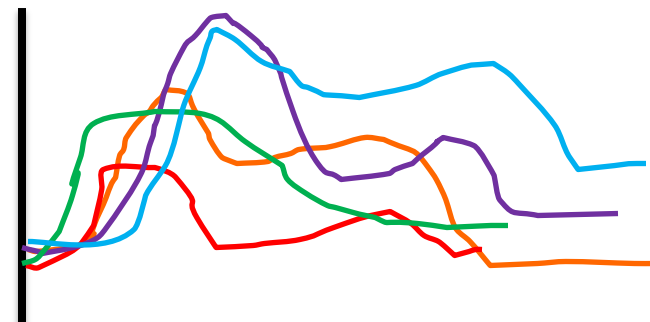
Simplify Data Analysis



Perform Asset Comparisons



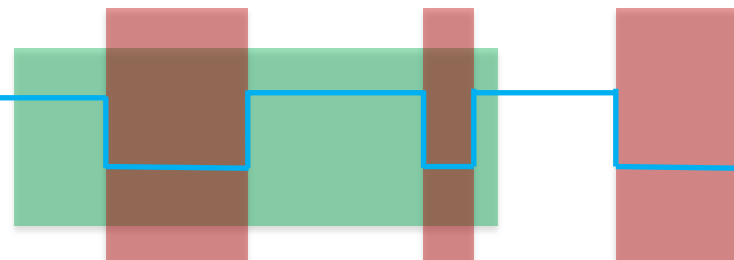
Event Overlay Trend (Temp)



| Name | Temp.Max |
|------|----------|
| EF1 | 122.47 |
| EF2 | 109.34 |
| EF3 | 112.73 |
| EF4 | 98.61 |
| EF5 | 125.24 |

Downtime Events for Product XYZ

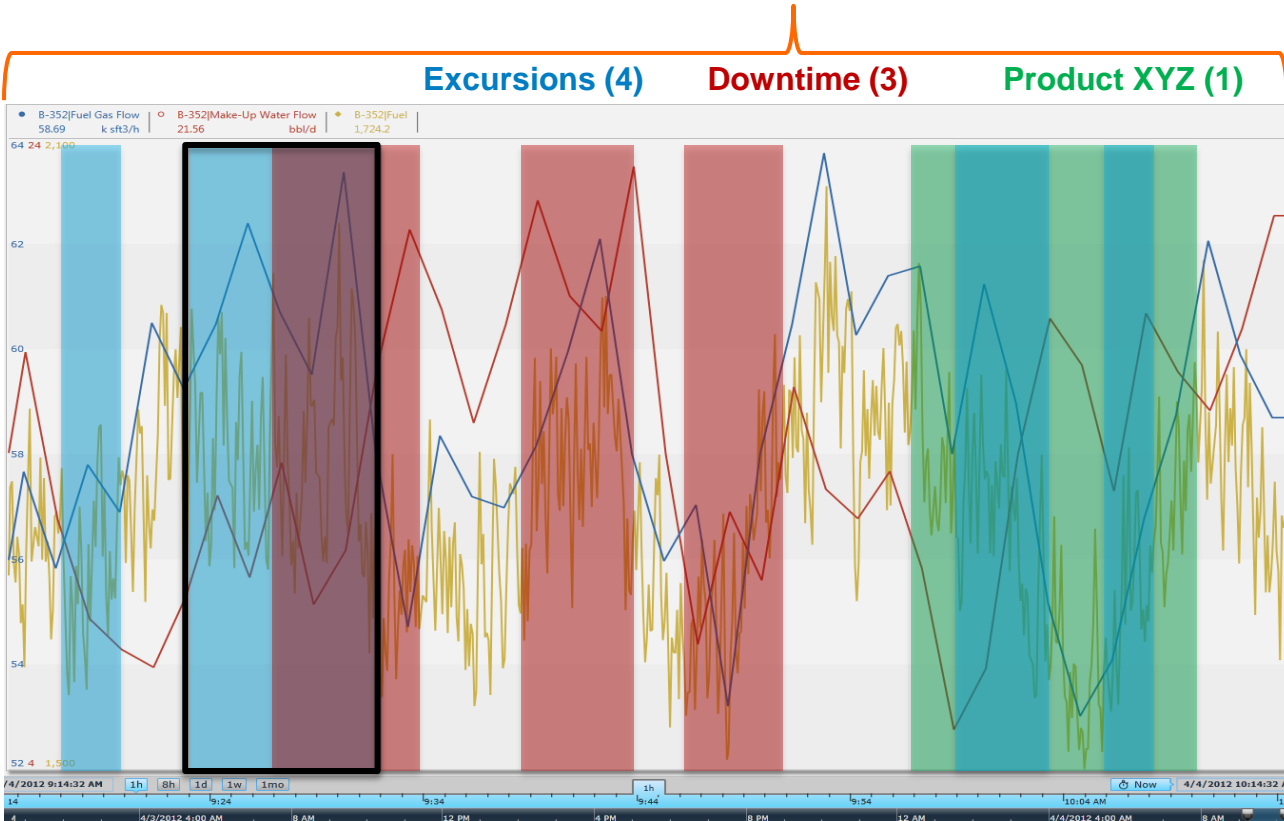
Product XYZ (1)
Downtime (2)



Perform Event Comparisons

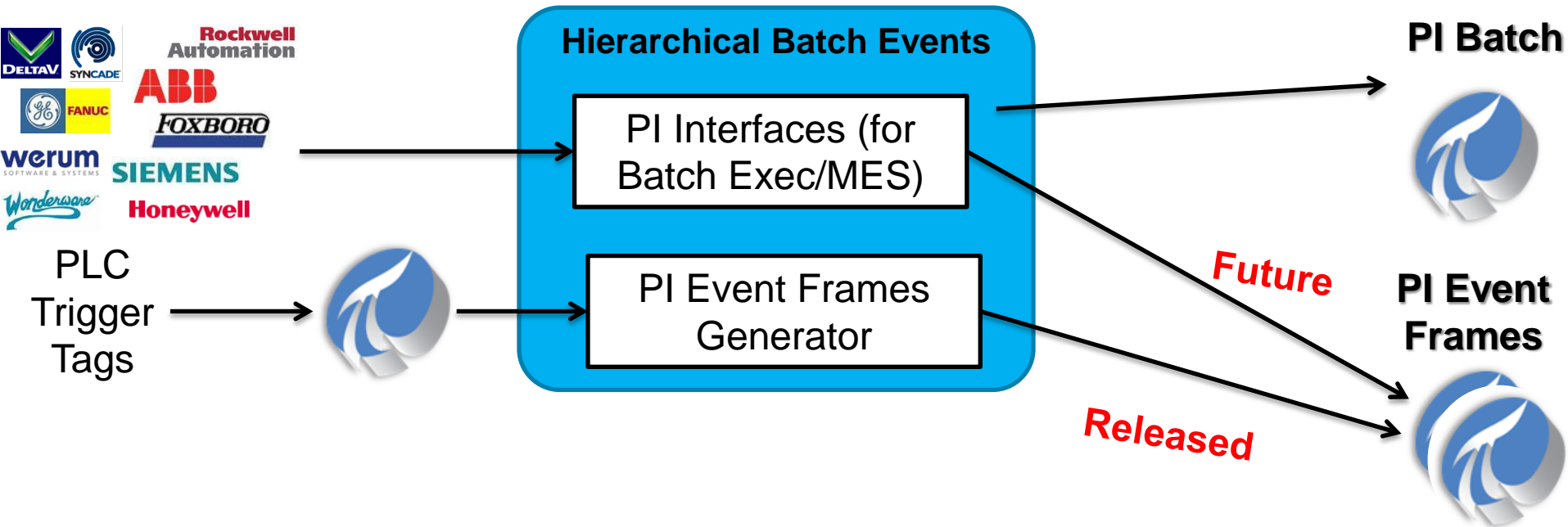
Discover Event Interrelationships

PI Event Frames is a core capability of the PI System to record important process or business events and help you find the *related data*.



| Event Attribute | Value |
|-------------------|----------------------|
| Name | Ex 20121215-0002 |
| Start | 15-Dec-2012 10:35:02 |
| End | 15-Dec-2012 10:47:26 |
| Duration | 12 min, 24 sec |
| Asset | Boiler-459 |
| Excursion Type | High Violation |
| Fuel Gas Flow.Avg | 37.12 k sft3/h |
| Fuel.Start | 823.48 k sft3/ton |
| myPIKPI.Max | 47.19 bbl/d |

Event Generation – What will I use?



Event Generation in Abacus

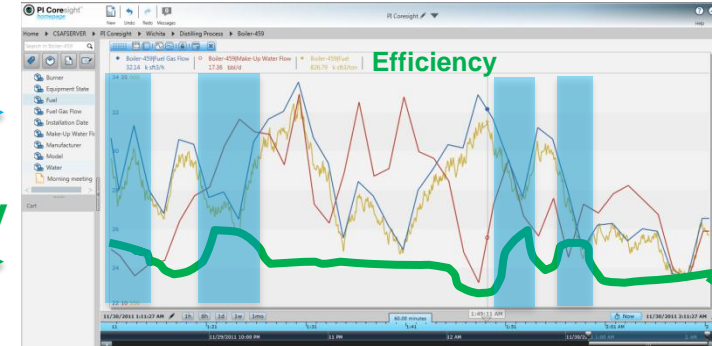


|Efficiency


|Fuel Flow Rate

|Flow Out

“Abacus”



 $\text{Efficiency} = (\text{Flow Out} / \text{Fuel Flow Rate} * 3.14)$

 $\text{myEF.Start} = (\text{Efficiency} > \text{LIMIT})$
 $\text{myEF.End} = (\text{Efficiency} < \text{LIMIT}) \text{ AND } (\text{Fuel Flow Rate} > 80)$

EVENT FILTERS

Duration

Longer Than Shorter Than

 0 m 200 m

Category

- ✓ Excursions (4)
- ✓ Downtime (3)
- ✓ Product XYZ (1)

Template

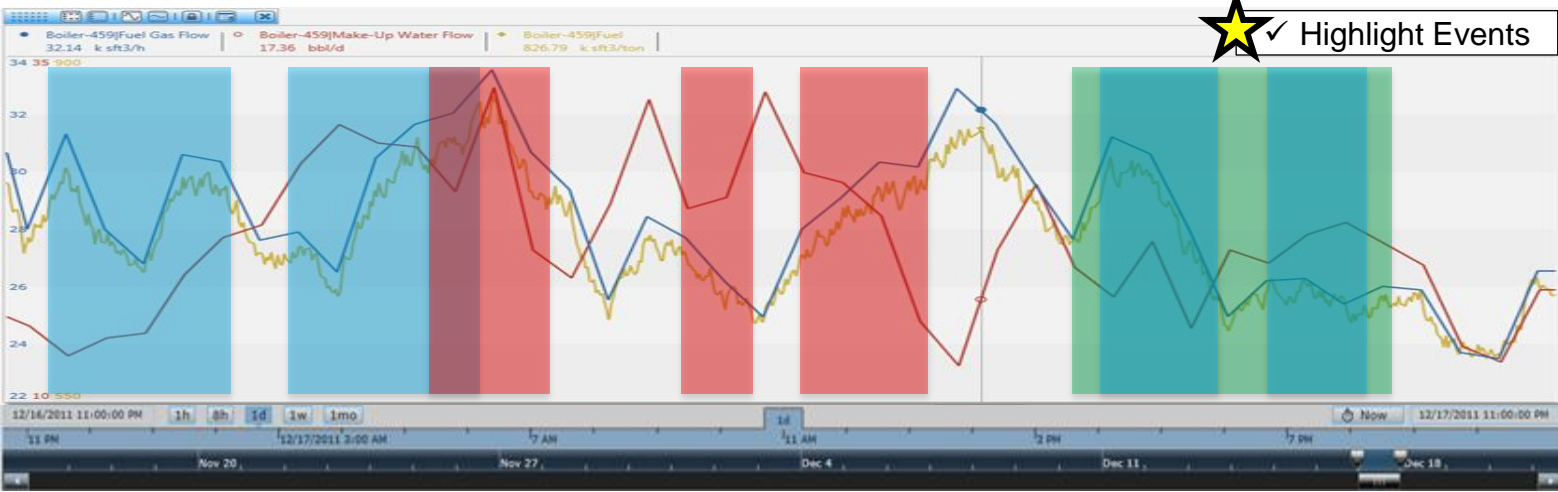
- ✓ Boiler Downtime (3)
- ✓ Boiler KPI Excursion (4)
- ✓ PIUnitBatch (1)

Temp.Max

Greater Than Less Than

 0 C 100 C

| Name | Start | End | Duration | Element | Category | Template | Reason Code | Temp.Max |
|--------|----------------------|----------------------|----------|---------|-------------|----------------------|-----------------|----------|
| Ex01 | 16-Dec-2011 23:05:48 | 17-Dec-2011 00:25:24 | 01:19:36 | B-459 | Excursions | Boiler KPI Excursion | High Temp | 91.2 |
| Ex02 | 17-Dec-2011 02:37:19 | 17-Dec-2011 04:12:07 | 01:34:48 | B-459 | Excursions | Boiler KPI Excursion | Low Pressure | 54.1 |
| DT45 | 17-Dec-2011 04:31:22 | 17-Dec-2011 05:20:34 | 00:49:12 | B-459 | Downtime | Boiler Downtime | Broken Thermo | 32.4 |
| DT46 | 17-Dec-2011 07:56:58 | 17-Dec-2011 08:19:46 | 00:22:48 | B-459 | Downtime | Boiler Downtime | Broken Thermo | 31.7 |
| DT47 | 17-Dec-2011 09:41:22 | 17-Dec-2011 10:52:58 | 01:11:36 | B-459 | Downtime | Boiler Downtime | Safety Shutdown | 87.2 |
| XYZ146 | 17-Dec-2011 13:12:34 | 17-Dec-2011 16:29:22 | 03:16:48 | B-459 | Product XYZ | PIUnitBatch | n/a | 48.9 |
| Ex03 | 17-Dec-2011 19:28:58 | 17-Dec-2011 20:41:22 | 01:12:24 | B-459 | Excursions | Boiler KPI Excursion | High Temp | 95.3 |
| Ex04 | 17-Dec-2011 21:44:58 | 17-Dec-2011 22:45:46 | 01:00:48 | B-459 | Excursions | Boiler KPI Excursion | Low Temp | 20.4 |



★ Highlight Events

Ex01

Ex02

XYZ146

DT45

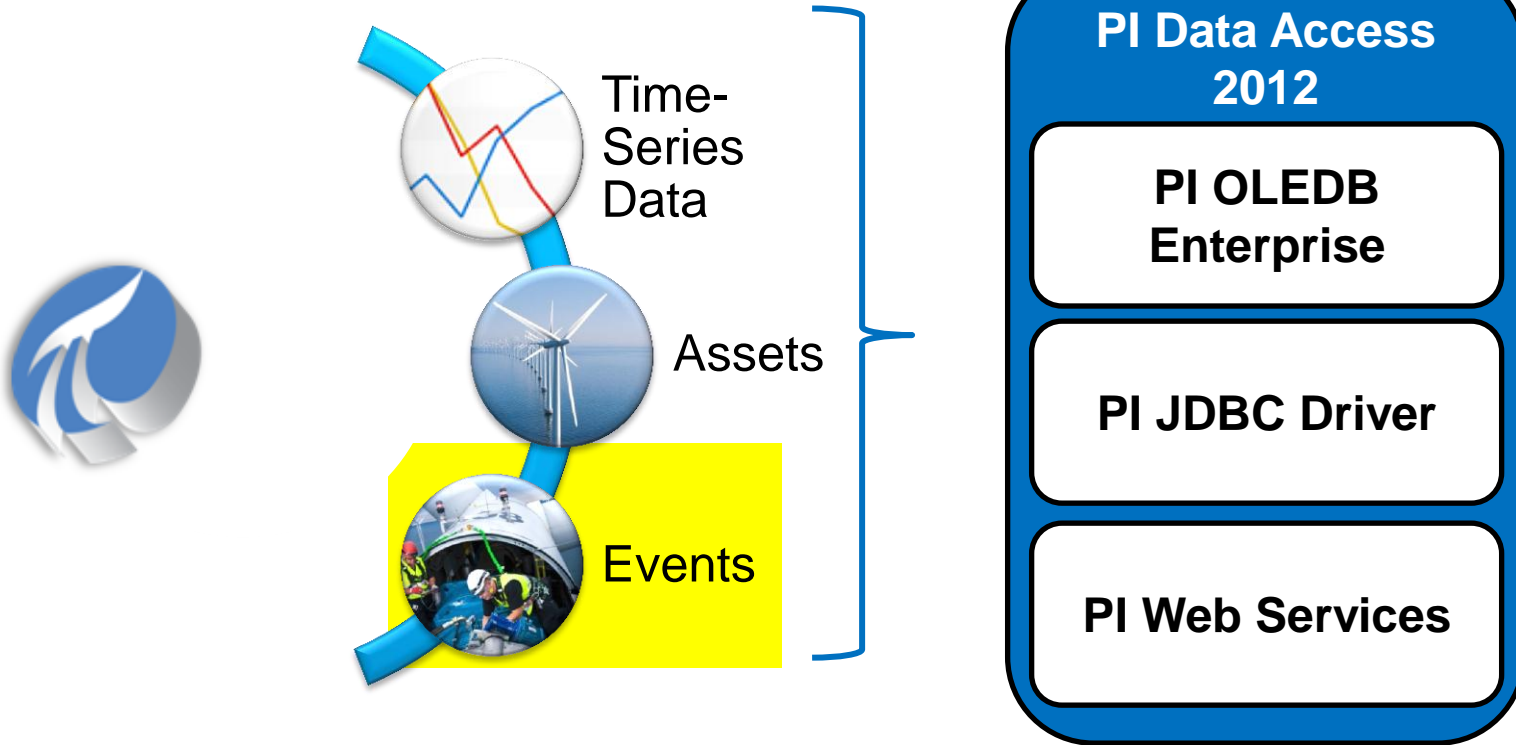
DT46

DT47

Ex03

Ex04

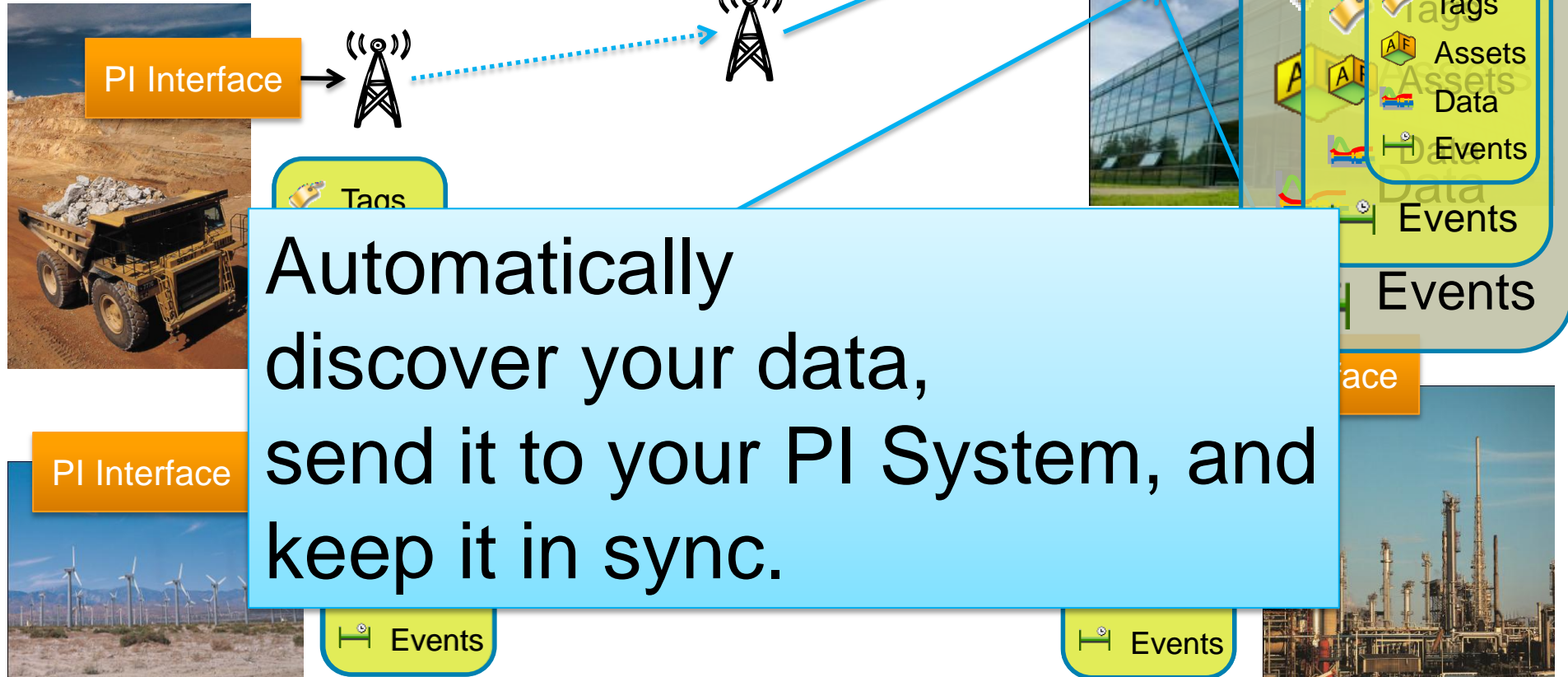
Event Integration with PI Data Access 2012



| 2011 | 2012 | | 2013 | | FUTURE |
|-------------------------------------|---|----|------|----|--|
| 4Q | 1H | 2H | 1H | 2H | |
| Wave 1 – Partner and Early Adopters | Wave 2 – Event Frames for the Mainstream | | | | |
| | <div> <div>Goal</div> <div> <u>End-to-End Event Frames Experience</u> <ul style="list-style-type: none"> Ability to generate Event Frames automatically Several event frame visualization options </div> </div> | | | | |
| | | | | | Wave 3 – Batch Moves to Event Frames |
| | | | | | <div> <div>Goal</div> <div> <u>Move PI Batch Customers Forward</u> <ul style="list-style-type: none"> Batch to EF Migration Functional Equivalency with existing Batch Clients </div> </div> |

NOTE: Future dates are subject to change. Last Updated: 04-2012

Smart Interfaces



Automatically discover your data, send it to your PI System, and keep it in sync.

More to search than ever...



Visualization

- Displays, captions, text
- PI Points, AF Elements & Attributes

Data Access

- Frequently accessed Data Streams
- Related Data Streams
- Workstation data sources

Analysis

- Performance Equations / Totalizers / Alarms
- ACE Calculations / Notifications / Event Frames

Directory

- AF Element Attributes / AF Elements
- AF Element Templates

Server

- Data Streams, PI Properties, By Value (> 75)

Interfaces

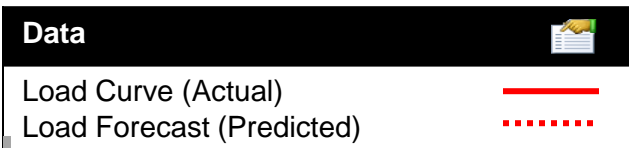
- Data sources
- Non-PI data

Find - PI System Search

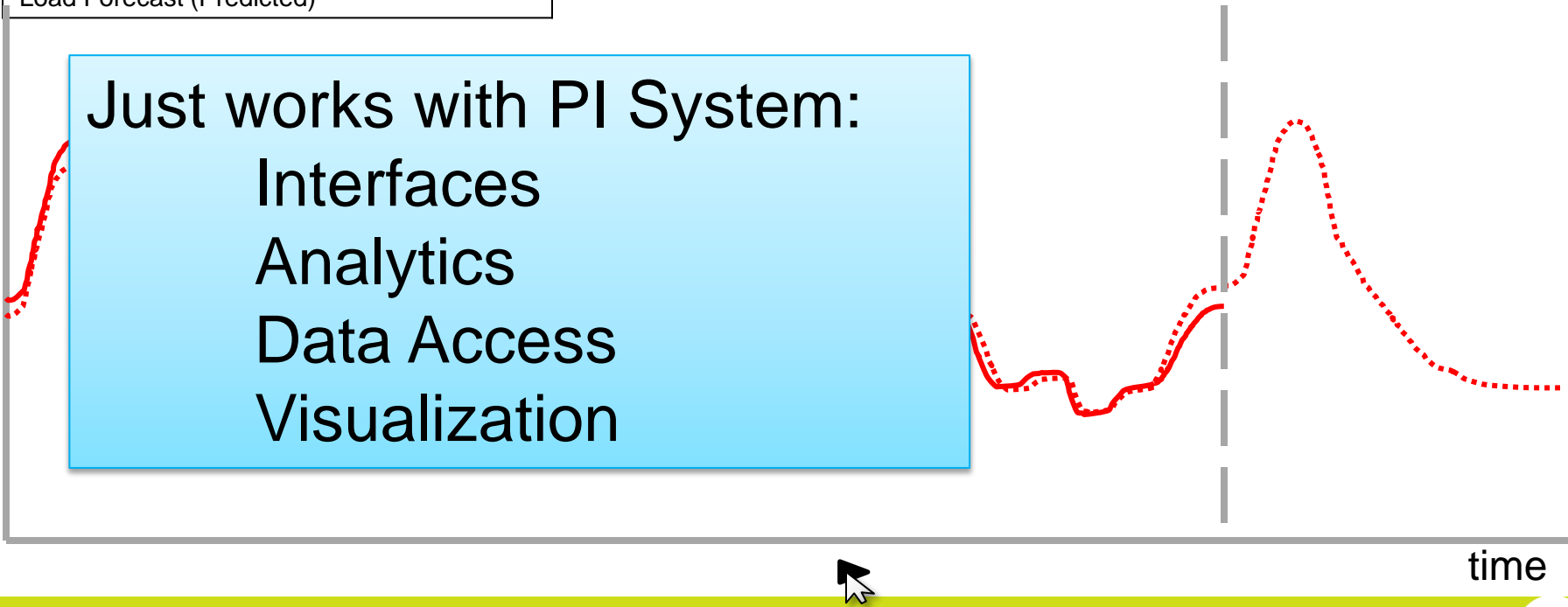


- Optimized Search Engine for the whole PI System
- Indexed for scale and high performance
- Can crawl many PI Servers*
- Ranked and Related Results
- Includes client artifacts:
 - PI ProcessBook Displays, PI Coresight Displays
- Shared User Experience

Future Data Coming – Next PI Server



Just works with PI System:
Interfaces
Analytics
Data Access
Visualization



time

PI Data Access, longer-term

PI System SDK

A single high performance SDK that allows you to access all PI System data

RESTful Web Services

Emerging web service standard, ideally suited for mobile and cloud

Integration Services

Makes business system integration easy, not just possible (ERP, BI)

Project Rubik – Why?

PI System Business Analytics

Provision



Analysis



Reports



Dashboards &
Scorecards

Data
Staging

ETL/Data
Quality



Analysis
Cubes



Data
Warehouse

Existing
PI System
Artifacts



Tags



Assets



Data



Events



Graphics



PI System

Users



End Users



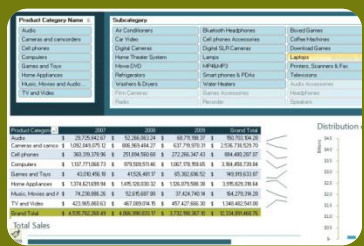
IT Pro



Power View



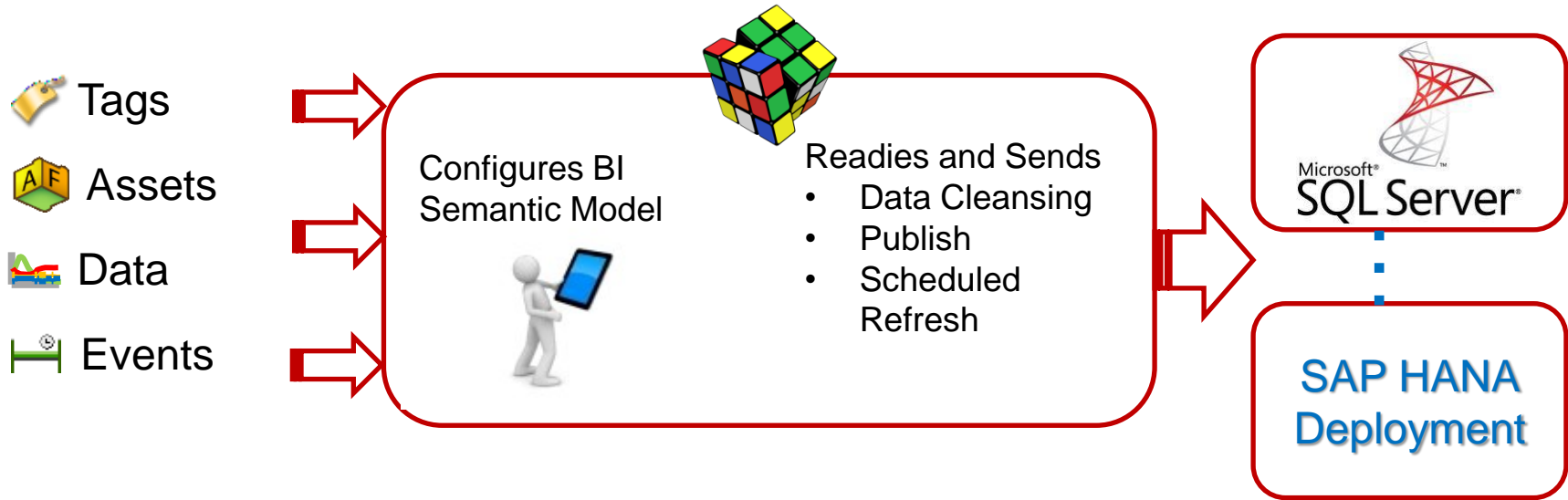
PowerPivot



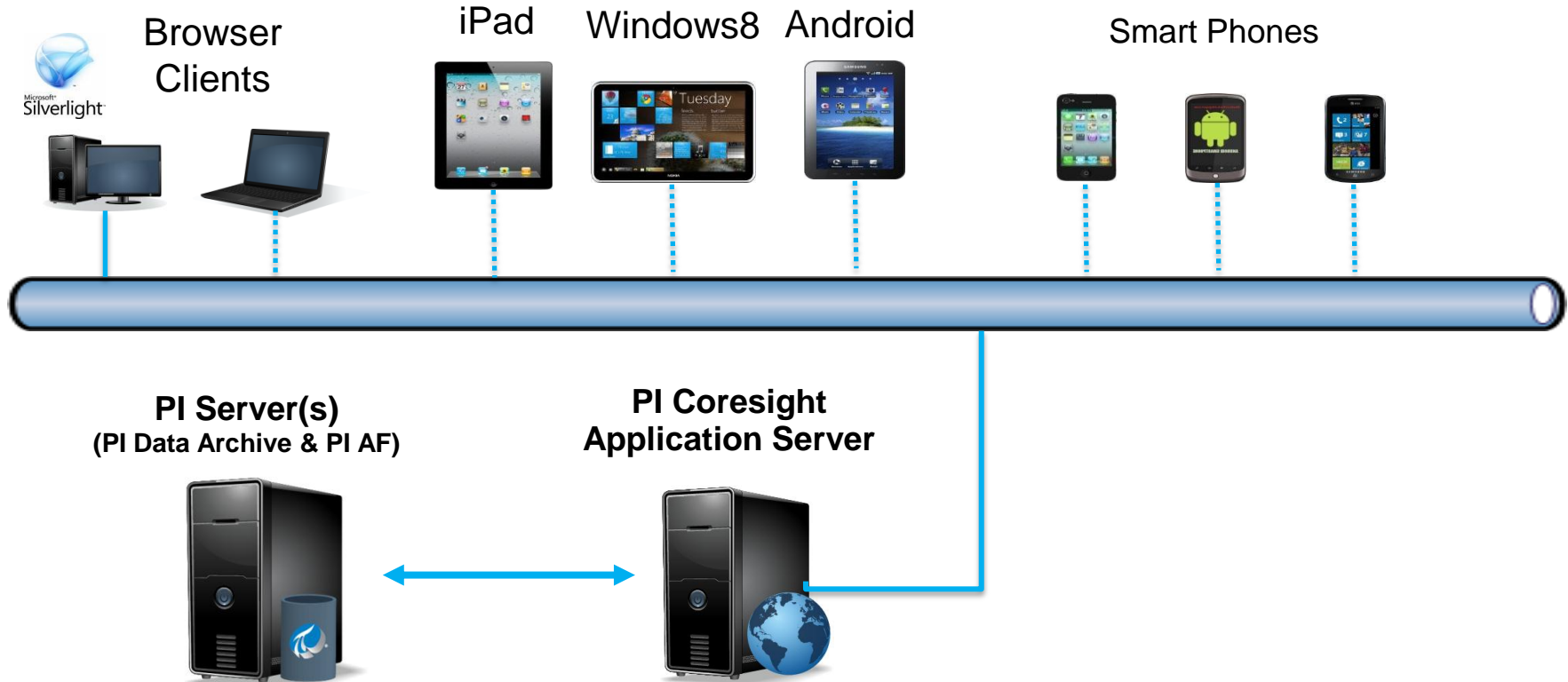
PowerPivot

Project Rubik

- Bridge the gap between PI System experts and BI Users
- Allow PI System expert to select the data
- Leverage BI Visualization Tools from Microsoft, SAP (and others)



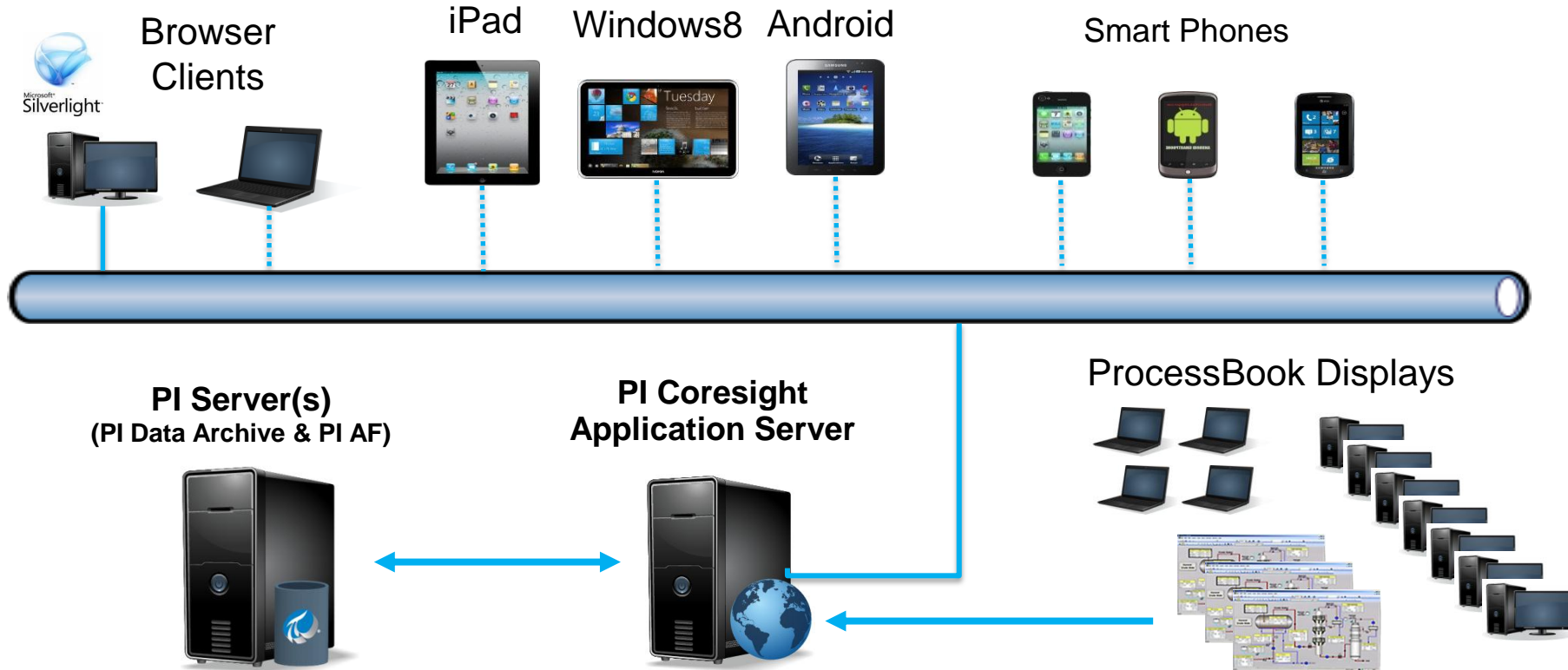
PI Coresight with Mobile Clients



PI Coresight Phone Edition – Target Audience

- Check in with Plant from Home / Road
- Tell me if something is wrong!
- Focus on Notifications, Acknowledge, Dispatch, and Escalation
- Give me some basic data related to notification
- Outside of plant - 3G, 4G, or public WiFi
- Personalization

PI Coresight – ProcessBook Display Viewer



PI WebParts 2013

Support for SharePoint 2010 and SharePoint 2013

Become a better SharePoint corporate citizen

Become a more “IT” friendly product

Replace obsolete technology

Set the stage for OS and Browser independence, Mobile



Remote Data Services

WSP Installs

Can leverage Adobe SVG Viewer if needed

Support for IE 8 and Firefox

Support for IE9/10 with Master Page Edit



Remote Data Services

WSP Installs

Visualization using Web Standards

Support for IE9, IE10, Firefox, and Chrome

Mobile Device Support – iOS, Android, WP

PI Cloud Initiatives

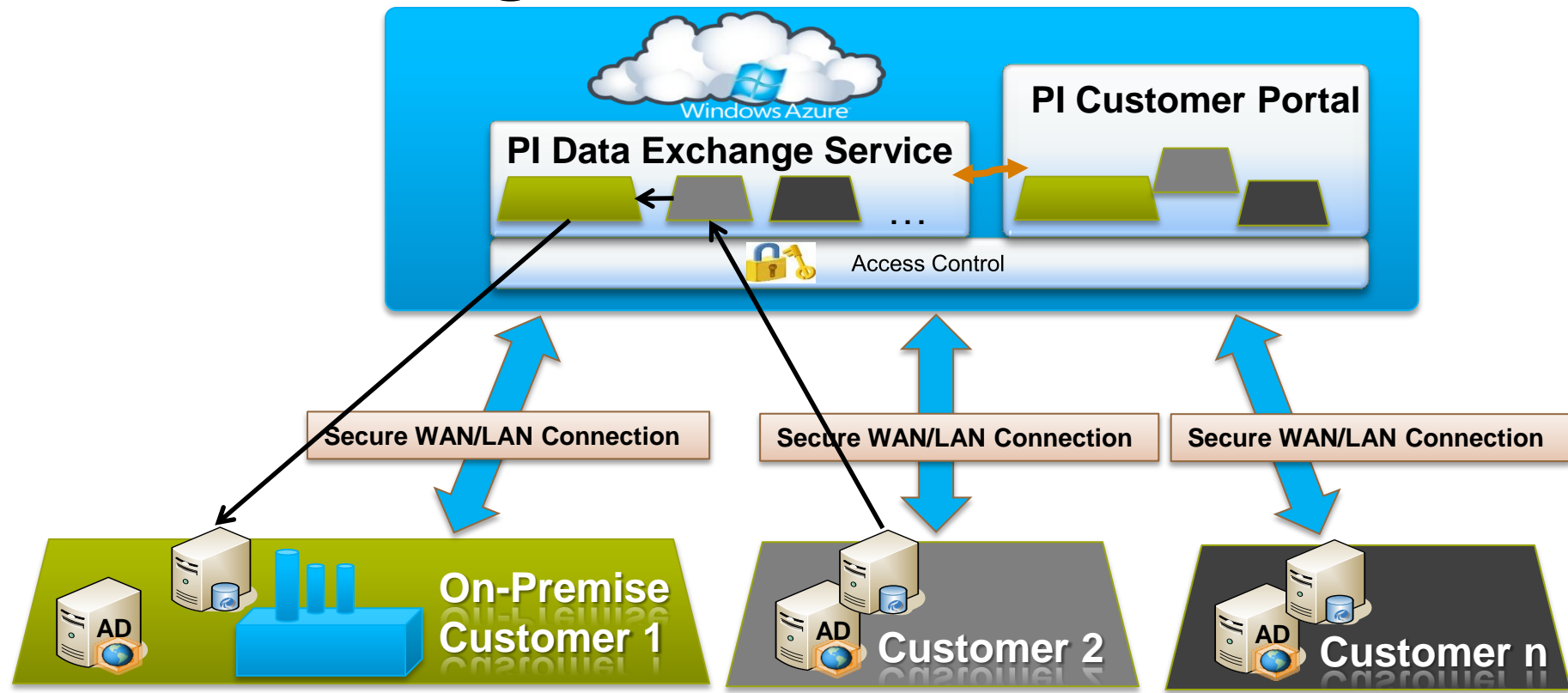
Add to existing PI Systems

- PI System Management
- PI Data Exchange
- PI Coresight Service
- Data, Visualization and other services for Partner and Custom Apps

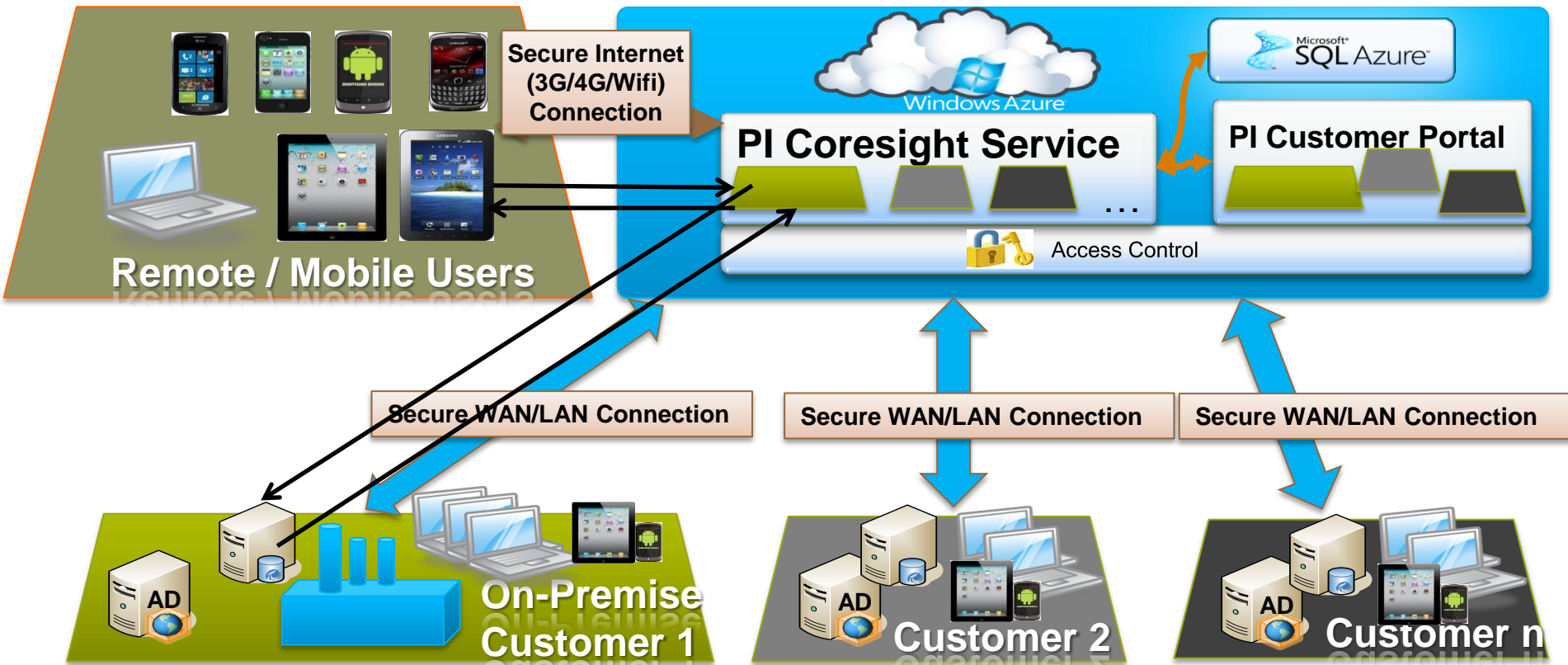
Full PI Deployment in the Cloud

- Simplified Deployment and Management
- Take advantage of Azure Platform (PaaS)
- Functionality you know in PI today plus much more
- Highly efficient and elastic

PI Data Exchange Service



PI Coresight Service with Mobility



Yung Wallace

ywallace@osisoft.com

Center of Excellence Engineer
OSIsoft, LLC



THANK YOU

Brought to you by  **OSIsoft.**