

OSIsoft®

USERS 2013 CONFERENCE

The Power of Data

THRIVING

IN A

WORLD OF

CHANGE



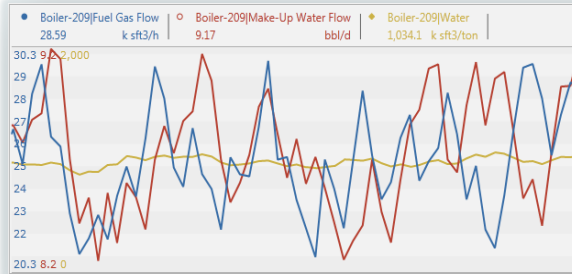
Presented by **Curt Hertler, Partner Solutions Architect**

A New Frontier

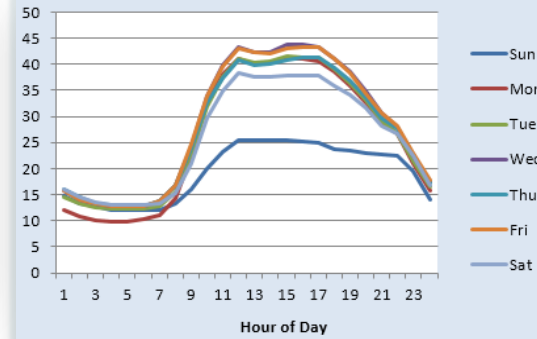
- Step change in Microsoft self-service BI tool set
 - Excel 2013 PowerPivot – Analysis and Reporting
 - SharePoint 2013 Power View – Ad Hoc Analysis and Collaboration
- When combined with a real-time infrastructure offers significant opportunity for enhanced operational insight.
- Companies are re-evaluating their BI vision to strategically leverage new tool kit to drive business value, enable and empower employees, and manage the cost/risk equation.

Visual Contexts for PI System Data

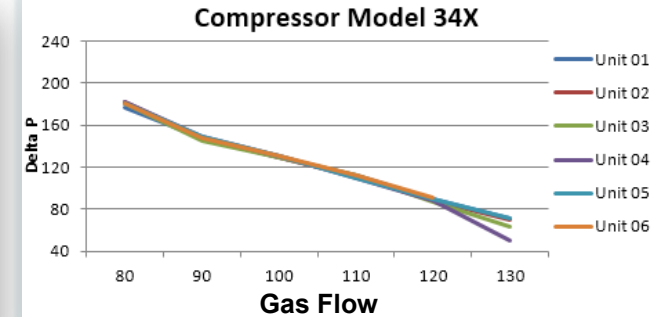
Time and Events



Profile



Behavioral



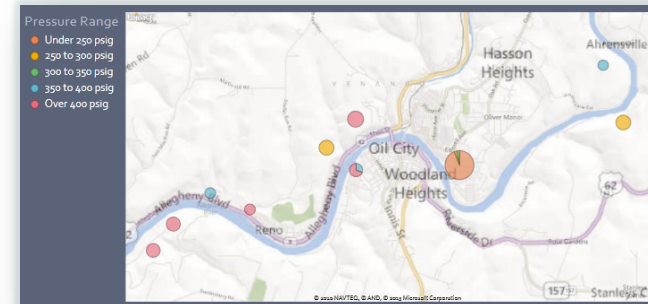
Performance Scorecard

	Bahrain			Kuwait		
	KPI Value	Plan Target	Dev %	KPI Value	Plan Target	Dev %
Crude Unit						
Light Naphtha 90 Pct. Pt.	179.9	180	-0.1 %	177.2	175	1.3 %
FCCU						
Conversion	63.4	64	-0.9 %	67.8	69	-1.7 %
FCC Gasoline (R+M)/2	86.2	86	0.2 %	85.2	86	-0.9 %
FCC Gasoline RVP	12.3	13	-1.6 %	11.8	12	0.0 %
FCCU 2						
Conversion				60.2	62	-3.0 %
FCC Gasoline (R+M)/2				87.0	86	1.8 %
FCC Gasoline RVP				13.1	12	9.2 %

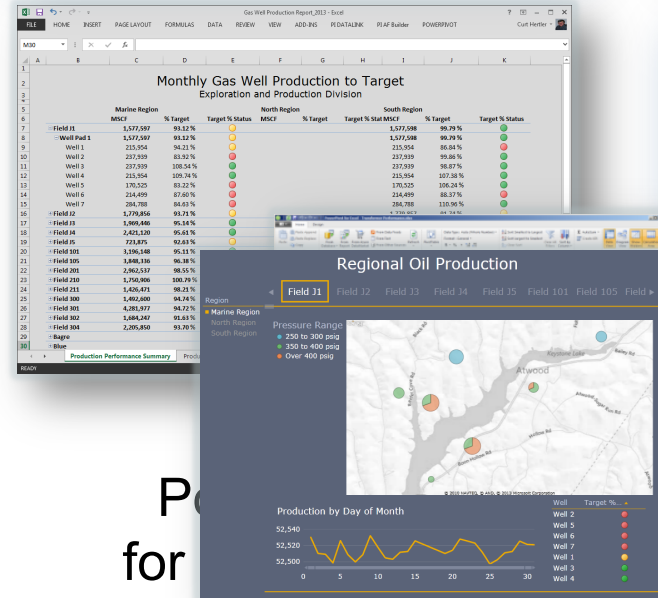
Ad Hoc



Geospatial



Toolkit for Operational Insight – 2013 Update



Power View

Operational Insight

Excel 2013 Worksheet

Operation to Target Summary_2013 - Excel

FILE HOME INSERT PAGE LAYOUT FORMULAS DATA REVIEW VIEW ADD-INS PI DATALINK PI AF Builder POWERPivot

R32

Refining Division Operation to Plan - 7 Days

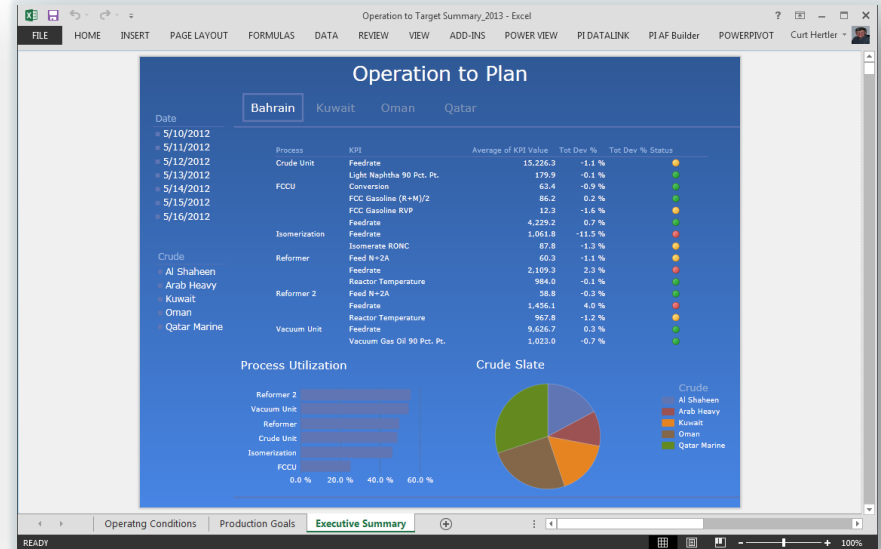
	Bahrain			Kuwait			Oman			Qatar		
Crude Unit	KPI Value	Plan Target	Dev %	KPI Value	Plan Target	Dev %	KPI Value	Plan Target	Dev %	KPI Value	Plan Target	Dev %
Light Naphtha 90 Pct. Pt. FCCU	179.9	180	-0.1 %	177.2	175	1.3 %	184.0	185	-0.5 %	189.3	180	5.2 %
Conversion	63.4	64	-0.9 %	67.8	69	-1.7 %	68.5	68	0.7 %	62.4	62	0.6 %
FCC Gasoline (R+M)/2	86.2	86	0.2 %	85.2	86	-0.9 %	84.2	87	-2.7 %	85.6	85	0.8 %
FCC Gasoline RVP	12.3	13	-1.6 %	11.8	12	0.0 %	12.5	12	0.8 %	11.9	12	-0.8 %
FCCU 2												
Conversion				60.2	62	-3.0 %						
FCC Gasoline (R+M)/2				87.0	86	1.8 %						
FCC Gasoline RVP				13.1	12	9.2 %						
Isomerization												
Isomerate RONC	87.8	89	-1.3 %				88.7	88	0.8 %	89.1	88	1.2 %
Reformer												
Feed N+2A	60.3	61	-1.1 %	57.9	58	-0.2 %	60.2	61	-0.5 %	55.9	62	-10.0 %
Reactor Temperature	984.0	985	-0.1 %	981.9	975	0.7 %	963.8	970	-0.6 %	975.5	974	0.2 %
Reformer 2												
Feed N+2A	58.8	59	-0.3 %									
Reactor Temperature	967.8	980	-1.2 %									
Vacuum Unit												
Vacuum Gas Oil 90 Pct. Pt.	1,023.0	1,030	-0.7 %	1,000.0	1,055	-5.2 %	1,050.0	1,020	2.9 %	1,078.0	1,000	7.8 %

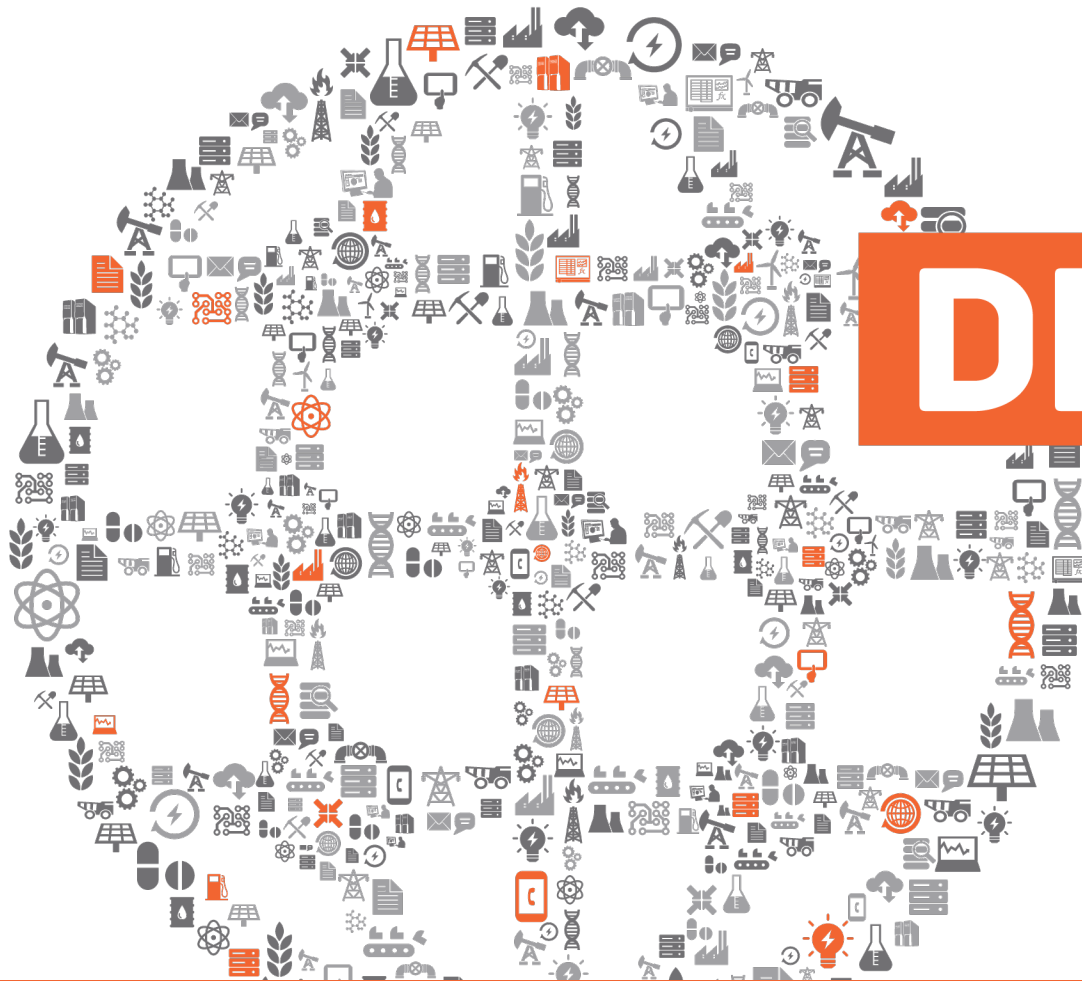
Date: 5/10/2012, 5/11/2012, 5/12/2012, 5/13/2012, 5/14/2012, 5/15/2012, 5/16/2012

Crude: Al Shaheen, Arab Heavy, Kuwait, Oman, Qatar Marine

Operating Conditions Production Goals Executive Summary

Excel 2013 Power View Report





DEMO

Operation to Target Summary_2013 Demo - Excel

FILE HOME INSERT PAGE LAYOUT FORMULAS DATA REVIEW VIEW ADD-INS PI DATALINK PI AF Builder POWERPivot

PivotTable Recommended PivotTables Table Pictures Online Pictures SmartArt Screenshot Apps for Office Recommended Charts PivotChart Power View Line Column Win/Loss Slicer Timeline Hyperlink Text Box Header & Footer WordArt Signature Line Equation Symbol

A1

Refining Division Operation to Plan - 7 Days

	Bahrain			Kuwait			Oman			Qatar		
	KPI Value	Plan Target	Dev %	KPI Value	Plan Target	Dev %	KPI Value	Plan Target	Dev %	KPI Value	Plan Target	Dev %
Crude Unit												
Light Naphtha 90 Pct. Pt.	179.9	180	● -0.1 %	177.2	175	● 1.3 %	184.0	185	● -0.5 %	189.3	180	● 5.2 %
FCCU												
Conversion	63.4	64	● -0.9 %	67.8	69	● -1.7 %	68.5	68	● 0.7 %	62.4	62	● 0.6 %
FCC Gasoline (R+M)/2	86.2	86	● 0.2 %	85.2	86	● -0.9 %	84.2	87	● -2.7 %	85.6	85	● 0.8 %
FCC Gasoline RVP	12.3	13	● -1.6 %	11.8	12	● 0.0 %	12.5	12	● 0.8 %	11.9	12	● -0.8 %
FCCU 2												
Conversion				60.2	62	● -3.0 %						
FCC Gasoline (R+M)/2				87.0	86	● 1.8 %						
FCC Gasoline RVP				13.1	12	● 9.2 %						
Isomerization												
Isomate RONC	87.8	89	● -1.3 %				88.7	88	● 0.8 %	89.1	88	● 1.2 %
Reformer												
Feed N+2A	60.3	61	● -1.1 %	57.9	58	● -0.2 %	60.2	61	● -0.5 %	55.9	62	● -10.0 %
Reactor Temperature	984.0	985	● -0.1 %	981.9	975	● 0.7 %	963.8	970	● -0.6 %	975.5	974	● 0.2 %
Reformer 2												
Feed N+2A	58.8	59	● -0.3 %									
Reactor Temperature	967.8	980	● -1.2 %									
Vacuum Unit												
Vacuum Gas Oil 90 Pct. Pt	1,023.0	1,030	● -0.7 %	1,000.0	1,055	● -5.2 %	1,050.0	1,020	● 2.9 %	1,078.0	1,000	● 7.8 %

Date

5/10/2012 5/11/2012 5/12/2012 5/13/2012 5/14/2012 5/15/2012 5/16/2012

Crude

Al Shaheen Arab Heavy Kuwait Oman Qatar Marine

Production Goals **Operating Conditions**

Self-Service BI at UC 2013

Day1 - “Self Service Business Analytics” Demo Pod

OSIsoft Product Expo and Reception

12:30 – 6:45 Golden Gate Rooms

Day 2 - “Slice and Dice PI System Data”

9:40 – 10:10 Grand Ballroom A



THANK YOU

Brought to you by

