

# Utilizing the OSIsoft PI System Across Power Generation Corporate Boundaries

Presented by

**Dave Olsheski – Engineering Director  
Gas Turbine Optimization & Upgrades  
Loveland, CO USA**



# Wood Group GTS is a leading independent Service Provider for gas turbines in the global oil & gas and power generation industries

- Power Plant Operations & Maintenance (O&M)
- Field Service
- Global Repair & Overhaul Facilities
- Power Plant EPC & Equipment Relocation
- Asset Optimization & Upgrades
- Engineering Services

**3,400 Employees, \$1.2B Annual Revenue**



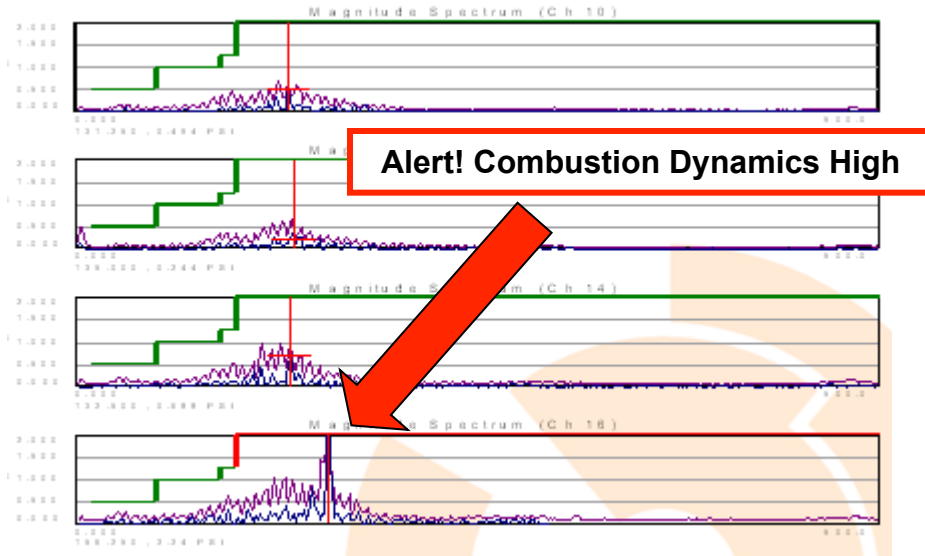
# Wood Group GTS - Remote Monitoring & Diagnostics

Leverage IT Technology to Provide World-Class Remote Engineering Service & Support

Allow Real-Time Wood Group Engineering Interface With Global Service Asset Fleet

**Real-Time Technical Support & Long-Term Asset Optimization = Customer Value!**

**Utilize This!**

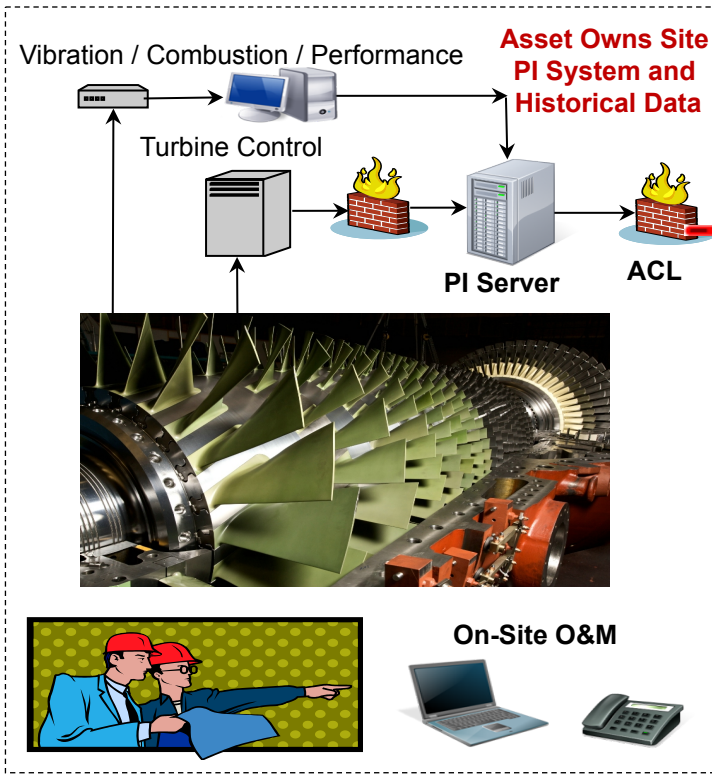


**To Avoid This....**



# WG RM&D Infrastructure - PI to PI Across Corporate Boundaries

## Power Plant – Various Owners / Operators



Future Cloud Connect ?

Process Data

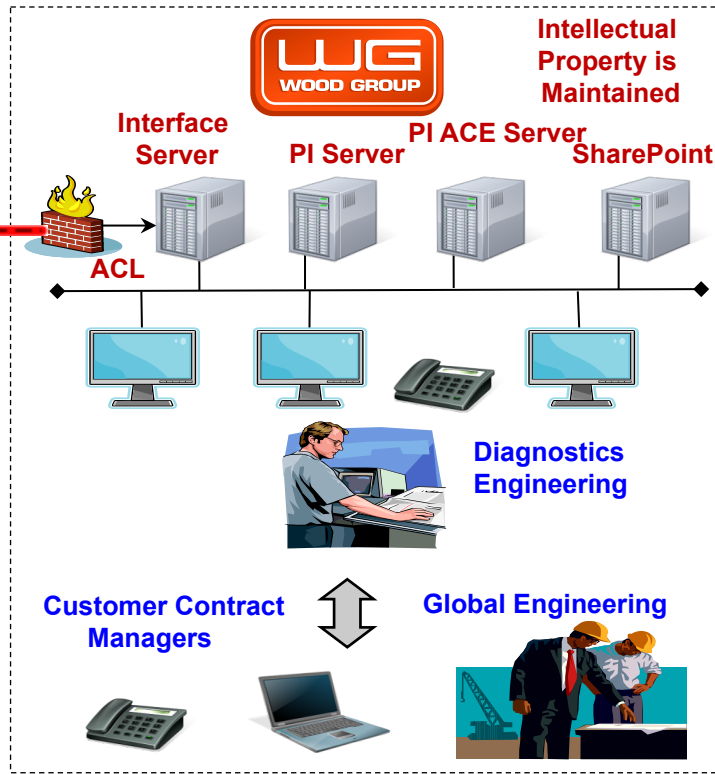
IPsec VPN

Solutions

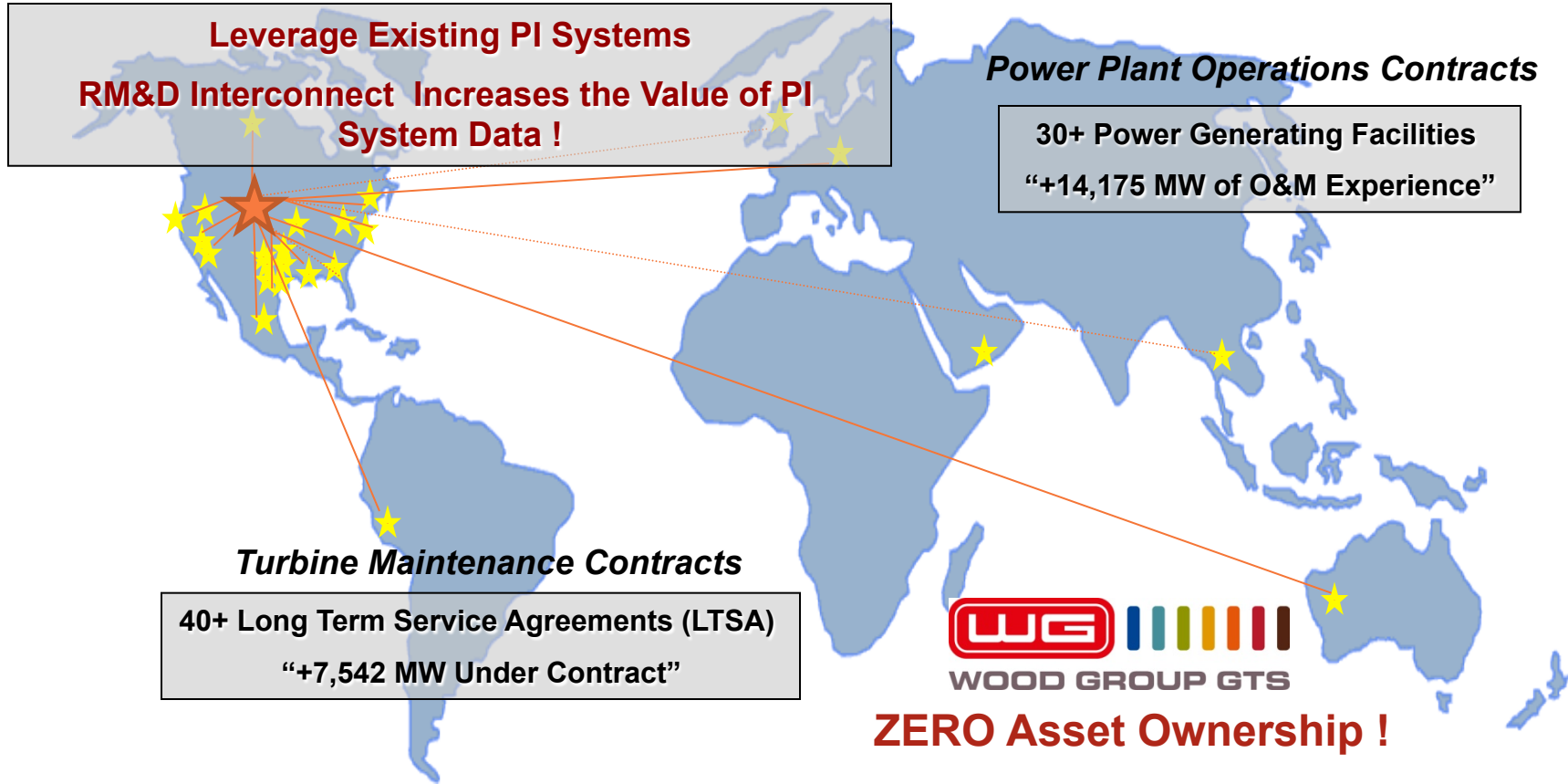
### SERVICES

- Remote Monitoring
- Web Graphics/Trends
- Periodic Reports
- Engineering Analysis
- Technical Support
- Recommendations
- Pager / E-mail Alerts

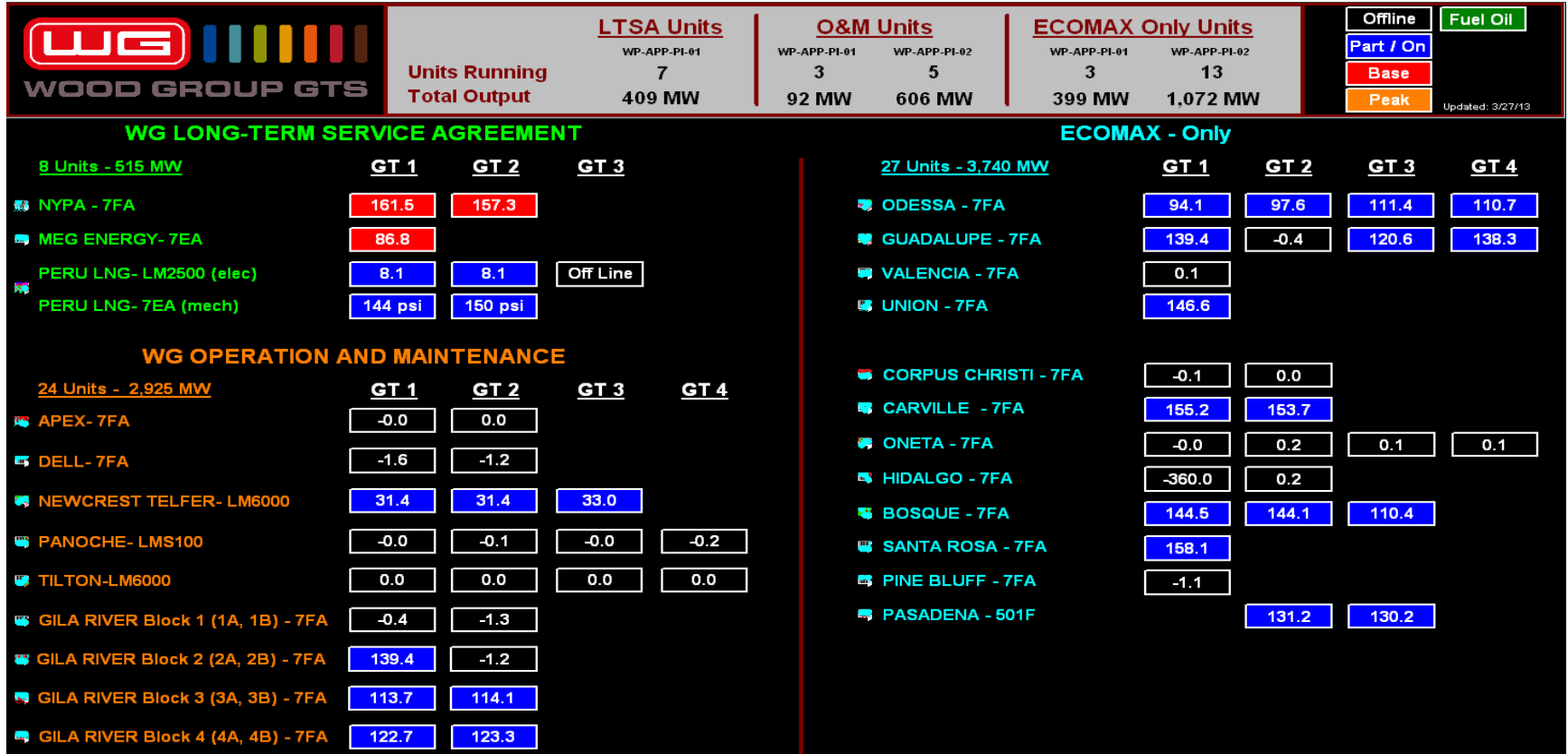
## Wood Group RM&D Center - Common



# Wood Group is Connecting PI System Data Across Corporate Boundaries – Globally !

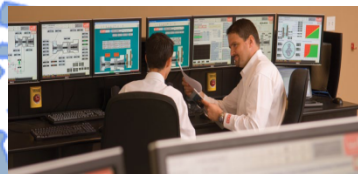


### 3 Examples of Utilizing PI System Data Across Corporate Boundaries to Solve Business Challenges





# OSIsoft PI to PI interface allowed RM&D within 1 day with No Travel!



Loveland, CO  
WG RM&D Engineering  
PI Client Tools and Apps



Houston, TX

WG Sub-contracted Data Center  
RM&D PI System



WT, Australia

WG operates a Power  
Plant at a remote mine



Mining Company Has PI System

**PI System Data Across Corporate Boundaries**

# Off-Grid Mining Customer Requires Maximum Power Plant Reliability = \$\$\$

WG RM&D supports WG on-site operations to ensure maximum power plant reliability and performance

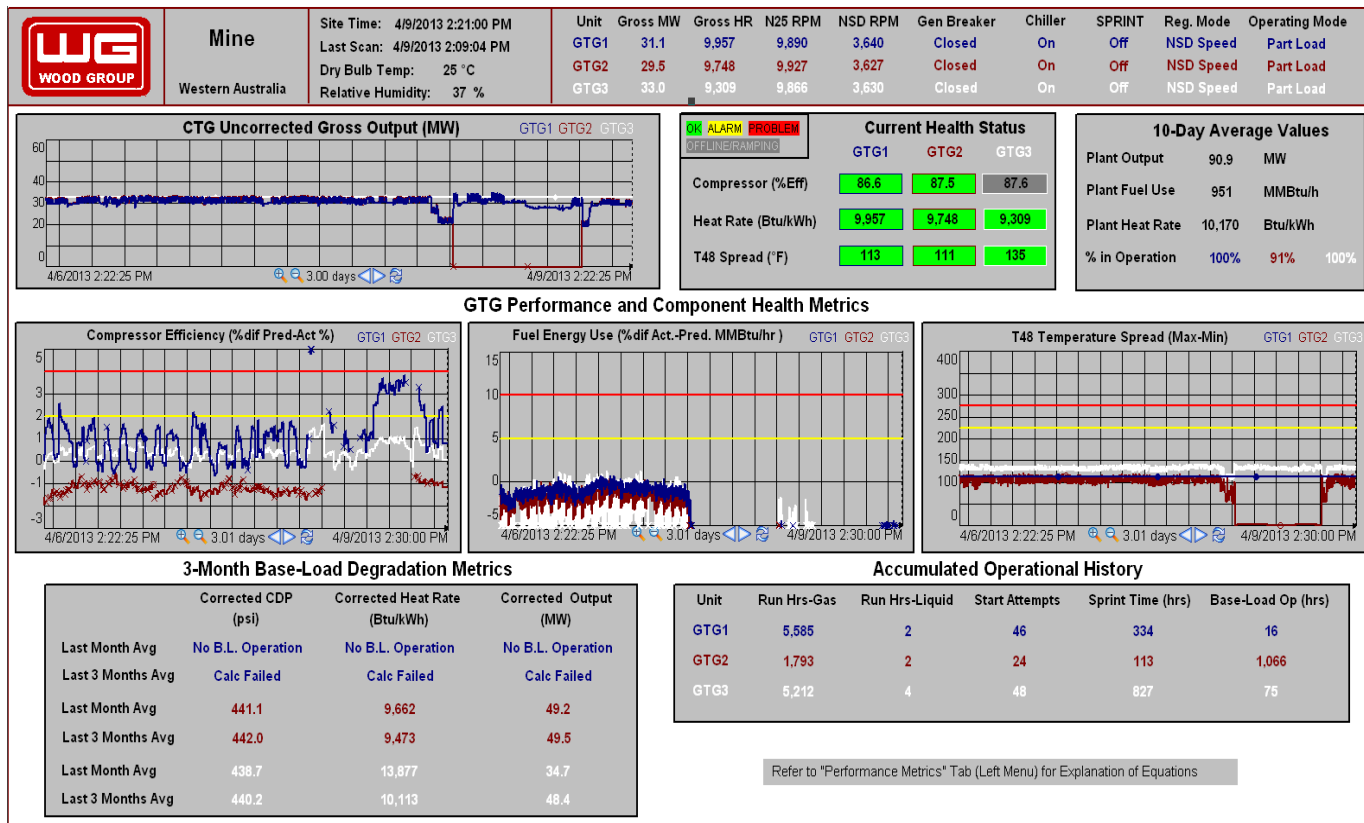
10,500 Miles Distant

14 hours Time Difference

Configuration of PI to PI interface between (2) corporate PI Systems took approximately 6 man-hours

OSIsoft Technology saved over 5 man-days of travel time and nearly eliminated configuration costs

Remote data latency < 15 min





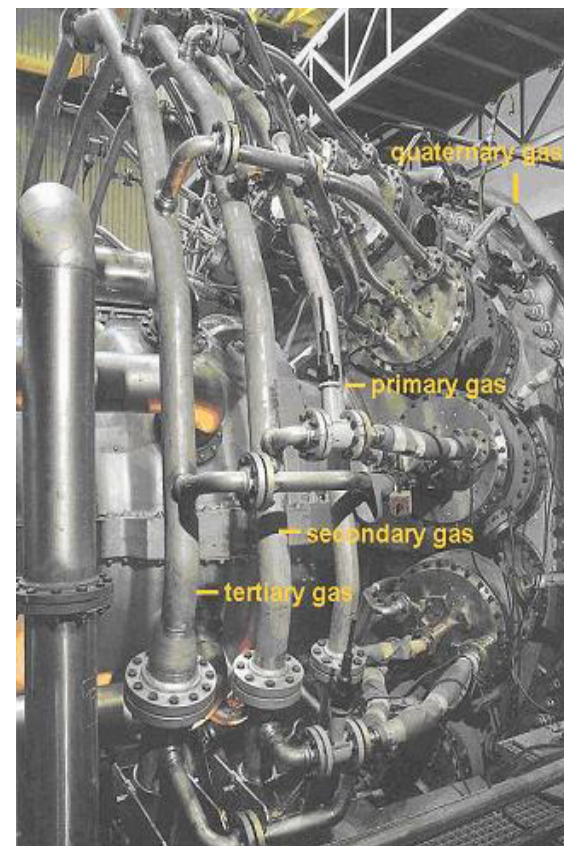
# OSIsoft PI System RM&D Infrastructure Allows Remote Combustion Tuning

F-Class Heavy Industrial Gas Turbine DLN Combustors are designed to provide single digit NOx & CO emissions from 50% to 100% Load

This is achieved via Lean Premix Combustion

## External Causes of Lean Premix Combustion Issues

- **Changes in Ambient Conditions**  
Temperature & Relative Humidity
- **Changes in Fuel Properties**  
Temperature, Pressure,  
Composition / Wobbe Index
- **Degradation / Replacement of**  
**Combustion Hardware**  
Fuel Nozzles, Liners, Transition Pieces
- **Combustion Dynamics Management**



## Gas Turbine Combustion Tuning = \$50k / year

Each Gas Turbine typically requires on-site combustion tuning by a specialized Engineer 2x / year



PM3/2 Schedule #2

As Left		As Found	
FXKPM3F2_n	FXKPM3S2_n	PM3F2_n	PM3S2_n
2100	83.50	2100	83.50
2130	81.50	2130	81.50
2170	77.50	2170	77.50
2200	75.50	2200	75.50
2230	73.50	2230	73.50
2260	69.50	2260	69.50
2300	67.30	2300	68.30
2330	66.50	2330	68.00
2380	62.50	2380	63.50
2410	61.40	2410	61.40



# OSIsoft PI System RM&D Infrastructure Allows Remote Combustion Tuning

Wood Group RM&D Provides On-Call Remote Combustion Tuning - Maximizing Value!



Loveland, CO

WG RM&D Engineering PI Client Tools and Apps



PI to PI



Fuel Split Adjustments to  
On-Site Ops via Phone  
based on Real-Time PI  
System Data



Customer Power Plant, Anywhere

On-Site PI Server & Controls Interfaces

## PI System Data Across Corporate Boundaries

# Wood Group GTS Acquired Gas Turbine Efficiency (GTE) in 4Q 2011 Resulted in Redundant US-Based RM&D Centers

**Business Challenge – Consolidate with NO Interruption of RM&D Service**



**GTE RM&D Infrastructure - Orlando, FL**  
**RM&D Engineering – Orlando, FL**



**Wood Group RM&D Infrastructure - Houston, TX**  
**RM&D Engineering – Loveland, CO**



# OSIsoft PI System Infrastructure was used at BOTH RM&D Centers Implemented 2-Year Migration Plan

Future Cloud  
Connect ?

Engineering & IT Coordination

1Q 2012



1Q 2013

## Wood Group Data Center - Houston

- (10+) Point-to-Point VPN Connections
- 50,000 Tag Enterprise PI System
- 32-Bit VM Environment

## GTE RM&D Infrastructure – Orlando

- (7) Point-to-Point VPN Connections
- 10,000 Tag HA PI System 2010
- 64-Bit Machine Environment



## Wood Group Data Center - Houston

- (21+) Point-to-Point VPN Connections
- 50,000 Tag Enterprise PI System (PI-01)
- 32-Bit VM Environment
- 20,000 Tag PI System 2010 (PI-02)
- 64-Bit VM Environment
- Common Client VM's to Direct-Connect to on-site PI Systems

# OSIsoft PI System Infrastructure was used at BOTH RM&D Centers

**Solution – Combine PI System Licenses & Physically Relocate Software to WG Data Center**

## **Consolidation of PI System Data Between Corporate Boundaries !**



**GTE RM&D Infrastructure**

**Duplicate Systems were run in parallel for 3+ months utilizing PI to PI as Site Connections were cut-over**

**All GTE OSIsoft software was re-licensed and re-used in the Wood Group environment**

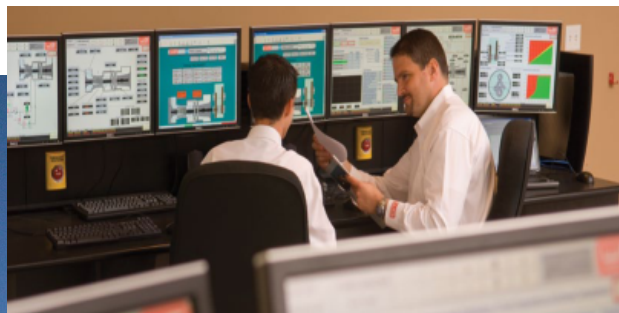
**All GTE hardware was re-used in Wood Group lab environment and RM&D Monitoring Center**

**Key OSIsoft knowledge resources were retained and relocated**



**Wood Group Data Center**





**Wood Group RM&D  
Inherently Interconnects  
PI System Infrastructure  
Across Corporate  
Boundaries**

**This Architecture  
Naturally Increase the  
Value of PI System Data!**

**OSIsoft PI Cloud Connect  
May Be In Our Future**

**Questions?**



# THANK

# YOU

Brought to you by

