



Coming to a PI System Near You

Presented by **Klaus Pohl**



OSIsoft.

USERS 2014 CONFERENCE

The **Power** of **Data**

DECISION READY IN REAL-TIME

Themes

1. Asset-based PI System
2. PI Event Frames
3. Future Data
4. Mobility/Visualization
5. Downstream Systems
6. Cloud Services

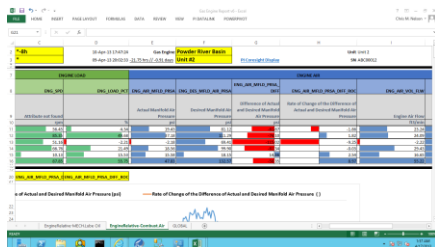
Theme 1: Asset-based PI System

An easier way to manage a PI System

2013

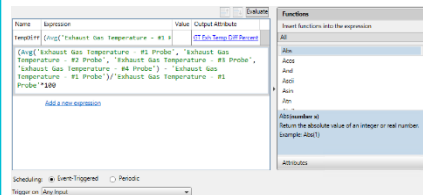


PI Coresight 2013

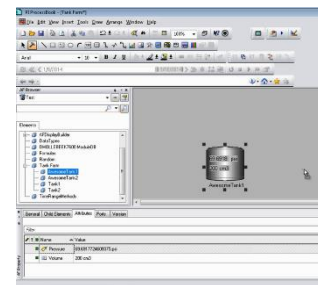


PI DataLink 2013

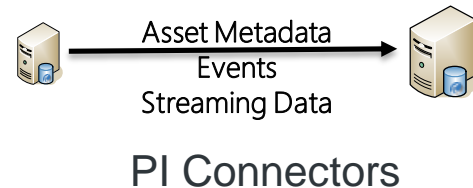
2014

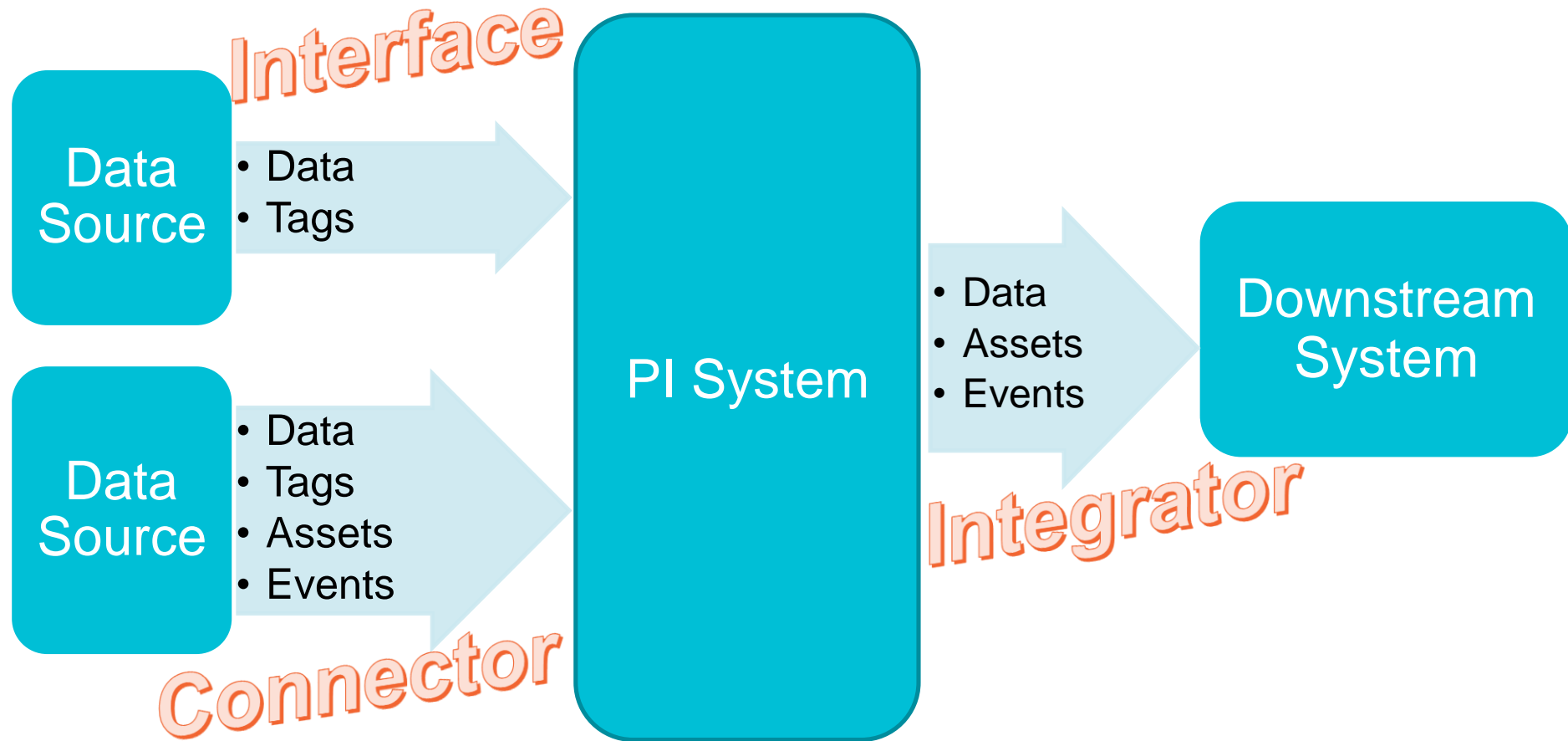


PI Server 2014
(Analytics)



PI ProcessBook 2014
AF Display Builder





http://localhost:5460/ CygNet Administration

CygNet Connector Administration Site

- Overview
- Data Source List
- Server List
- Diagnostics

Overview

CygNet connector details

Version 1.0.0.10

Status of the connector

Connector running as OSI\bandersen
✔ Connector is running - [Stop connector](#)

Data sources for the CygNet connector

❗ CygNet Data Source
[Add or modify data sources](#)

Servers configured to receive data from the connector

✔ PI Data server : IntOne
✔ PI Asset server : IntOne
[Add or modify servers](#)

OSIsoft.

← → http://localhost:5460/DataSourceL CygNet Administration

CygNet Connector Administration Site

CygNet Data Source Configuration

Data source description (optional)

A Test CygNet System

CygNetSite

OSILARGE

CVSScanRate

1

VHSScanRate

15

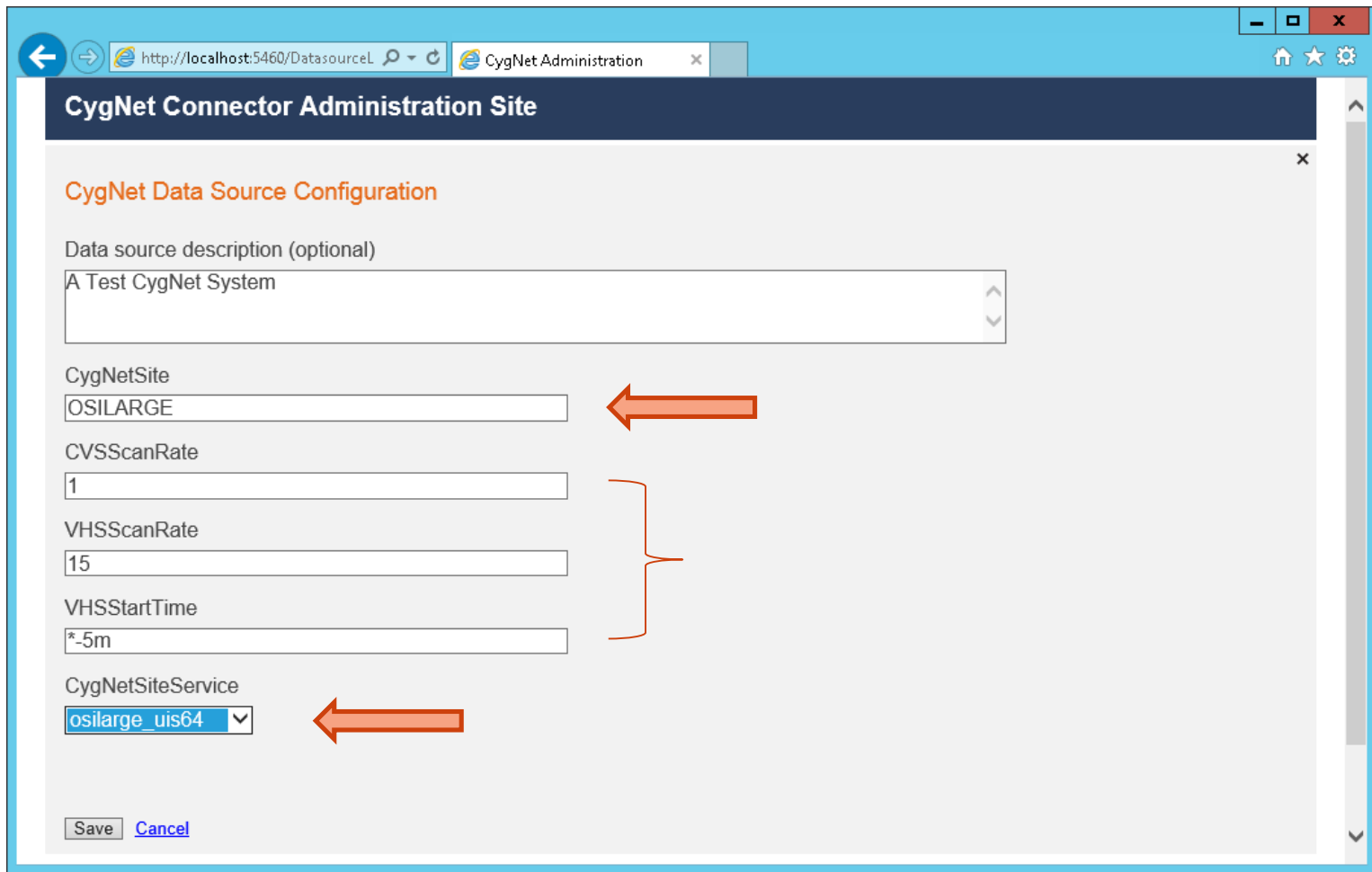
VHSStartTime

*-5m

CygNetSiteService

osilarge_uis64

Save Cancel



CyGNet Explorer - Domain [5410]OSILARGE.FAC

File View Help

New Filter

Filtered Services-Type-Status

Domain [5410]

- OSILARGE
 - Facility Service
 - Point Service
 - UIS 64-bit
 - VHS 64-bit

Contents of: Domain [5410]

Facility Identifier

OSILARGE_HSS

OSI_BATTERY_1

OSI_BATTERY_2

OSI_COMMDEV_1

OSI_COMMDEV_2

OSI_DDSFAC_1

OSI_DDSFAC_2

OSI_DMD_1

OSI_DMD_2

Elements

Connectors

CyGNet Connector

OSILARGE.UIS64::OSI_BATTERY_1

OSI_BATTERY_1_BATE

OSI_BATTERY_1_CP1P

OSI_BATTERY_1_CP1PSH

OSI_BATTERY_1_FR1FALM

OSI_BATTERY_1_LTOIL1

OSI_BATTERY_1_PP1F

OSI_BATTERY_1_PP1V

OSI_BATTERY_1_SYDEVADDR

OSILARGE.UIS64::OSI_BATTERY_2

OSILARGE.UIS64::OSI_COMMDEV_1

OSILARGE.UIS64::OSI_COMMDEV_2

OSILARGE.UIS64::OSI_DDSFAC_1

OSILARGE.UIS64::OSI_DDSFAC_2

OSILARGE.UIS64::OSI_DMD_1

OSILARGE.UIS64::OSI_DMD_2

OSILARGE.UIS64::OSI_DRIVE_1

OSILARGE.UIS64::OSI_DRIVE_2

OSILARGE.UIS64::OSI_POC_1

OSILARGE.UIS64::OSI_POC_2

OSILARGE.UIS64::OSI_SWD_1

OSILARGE.UIS64::OSI_SWD_2

OSILARGE.UIS64::OSI_WELL_1

OSILARGE.UIS64::OSI_WELL_2

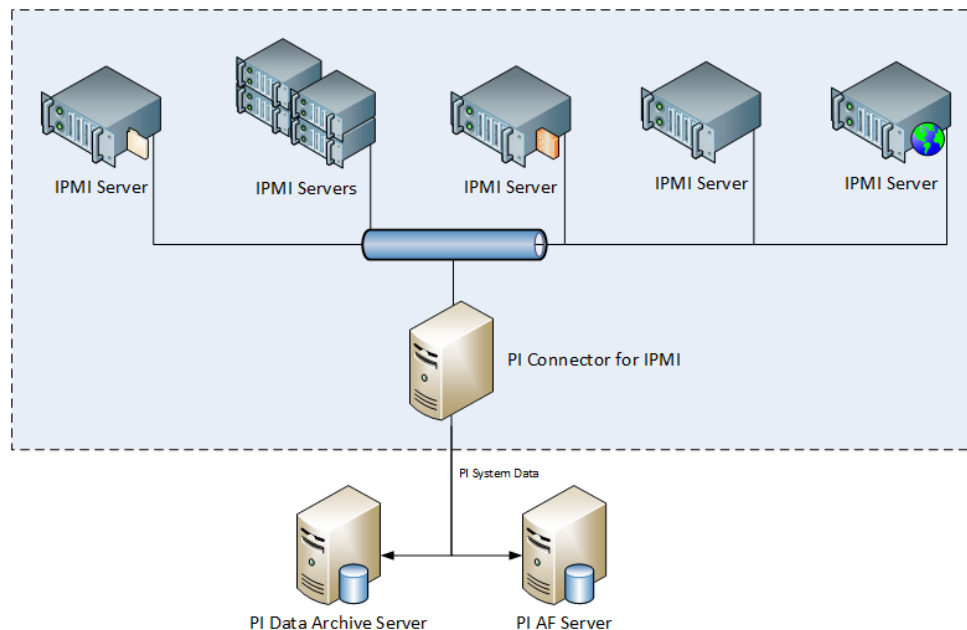
General Child Elements Attributes Ports Version

Filter

Name	Value
tagfull	
taglong	
twopntscale	Y
uniformdatacode	BATE
uniformdatacode_desc	
Unreliable	N
userflag1	N
userflag2	N
userflag3	N
userflag4	N
userflag5	N
userflag6	N
userflag7	N
userflag8	N
Value	65

PI Connector for IPMI

- OSIssoft's first Release of a PI Connector
- The PI Connector for IPMI
 - Collects data from devices that support the Intelligent Platform Management Interface (IPMI)
 - Models the IPMI data, builds and configures the assets and PI Points to model the platform, and then sends the IPMI data to PI Asset Framework (PI AF) and the PI Data Archive.



Programmatic Access for Asset-based PI System

- PI ODBC
- PI Web API
- Programmable Analytics

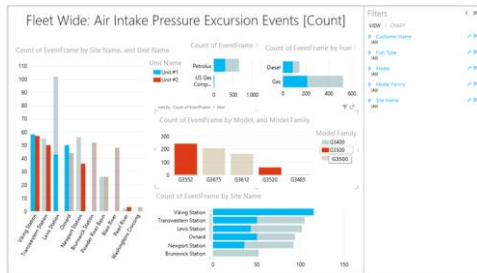
Theme 2: PI Event Frames

Capability of the PI System to record and analyze important process or business events

Industry	Event Frames	Value
Power & Utilities	Turbine Startups & Shutdowns	Respond to MW dispatch requests
Power & Utilities	Equipment failures	Increase grid reliability
Oil & Gas	Truck offloads into facility storage	Inventory Tracking
Oil & Gas	Pump vibrations, downtime, ramp ups	Safety, optimization, asset reliability
Pulp & Paper	Paper runs, grade changes	Reduce grade change time
Metals & Mining	Rolls of Aluminum	Quality, roll comparisons
Chemicals	Batches, processing steps	Equipment effectiveness
Life Sciences	Batches, unit procedures, phases	Product quality, regulatory

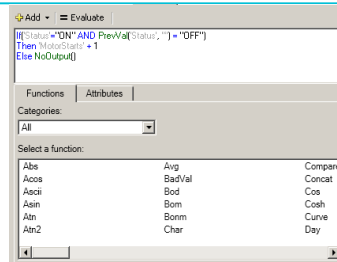
PI Event Frames

2013



PI OLEDB Enterprise 2012

2014



Analytics in PI Server 2014

2015



Batch to Event Frame Migration in PI Server 2015

- PI Web Services
- BES/MES Interfaces
- EF Generator



PI DataLink 2014

PI Coresight 2013

PI DataLink

- PI DataLink 2014
 - PI Event Frames functions
 - New PI AF template filter function
 - PI Tag search enhancements
- PI DataLink Server 2014
 - Supports Microsoft SharePoint 2010 and 2013

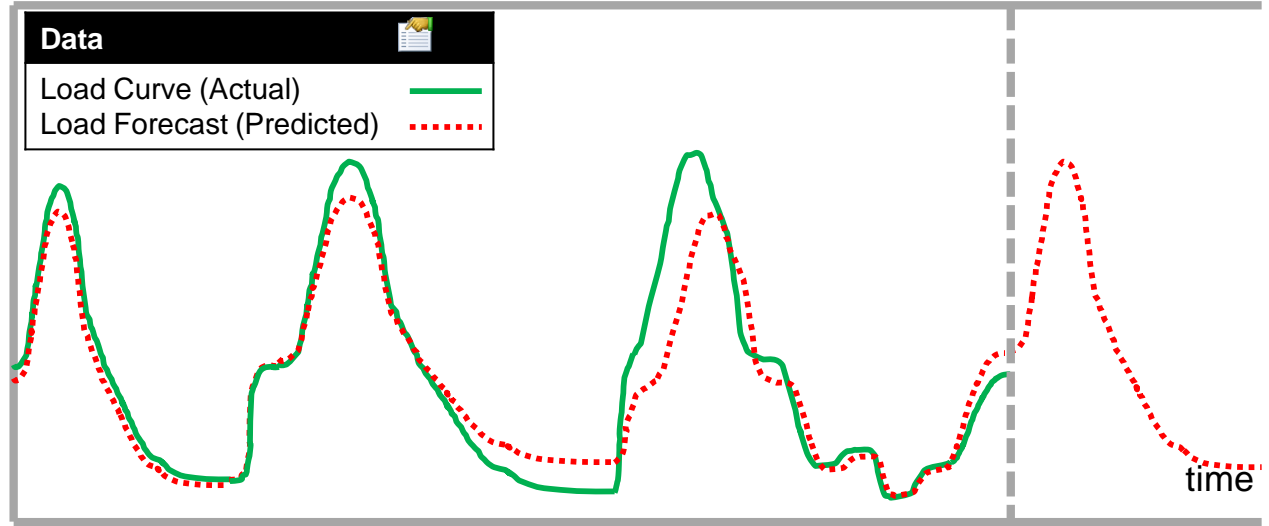
Coming Soon for PI Event Frames

- PI DataLink Server 2014
- Overlay trend in PI Coresight
- RtReports
- PI Notifications

Themes

1. Asset-based PI System
2. PI Event Frames
- 3. Future Data**
4. Mobility/Visualization
5. Downstream Systems
6. Cloud Services

Theme 3: Future Data



- PI Server 2015
- Visualization enhancements
- Beta available now!

Theme 4: Mobility/Visualization

- Web-based technologies
- Multiple devices for each user
- Notify you of exceptions instead of relying on monitoring

PI Coresight 2014

- Fast and easy access to PI System data
- PI ProcessBook display viewing in any browser
- New mobile web site designed for small screens and accessible on any device



PI Coresight 2014

Big New Features

- PI ProcessBook displays available on new devices and combine them with Coresight visualization tools
- Moving from desktop browser only to phone, tablet, and desktop
- Improved performance and scalability

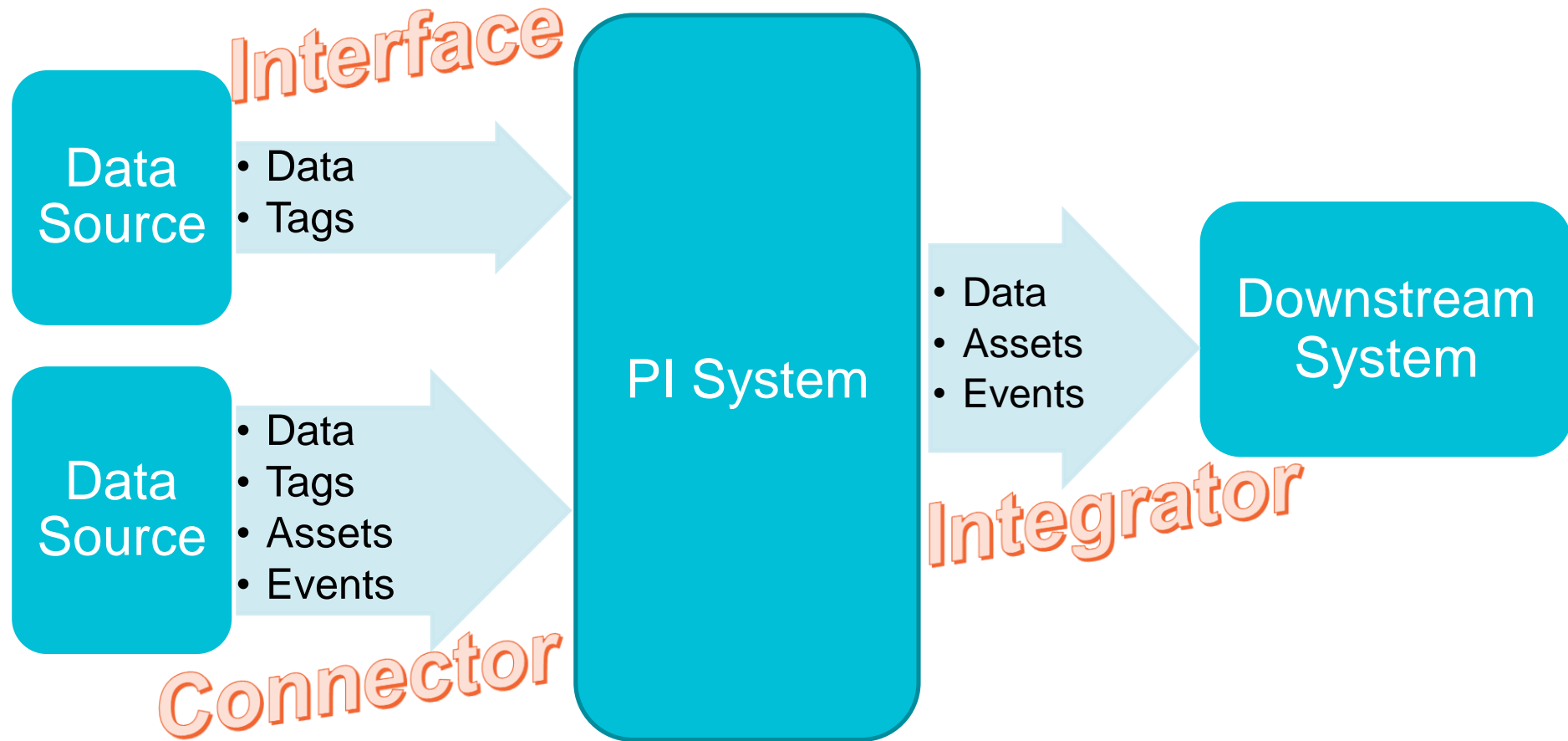


Visualization Releases

- PI Coresight 2014
- Manual Logger 2014
- PI ProcessBook 2014
- PI WebParts 2013 SP1

Themes

1. Asset-based PI System
2. Event Frames
3. Future Data
4. Mobility/Visualization
- 5. Downstream Systems**
6. Cloud Services

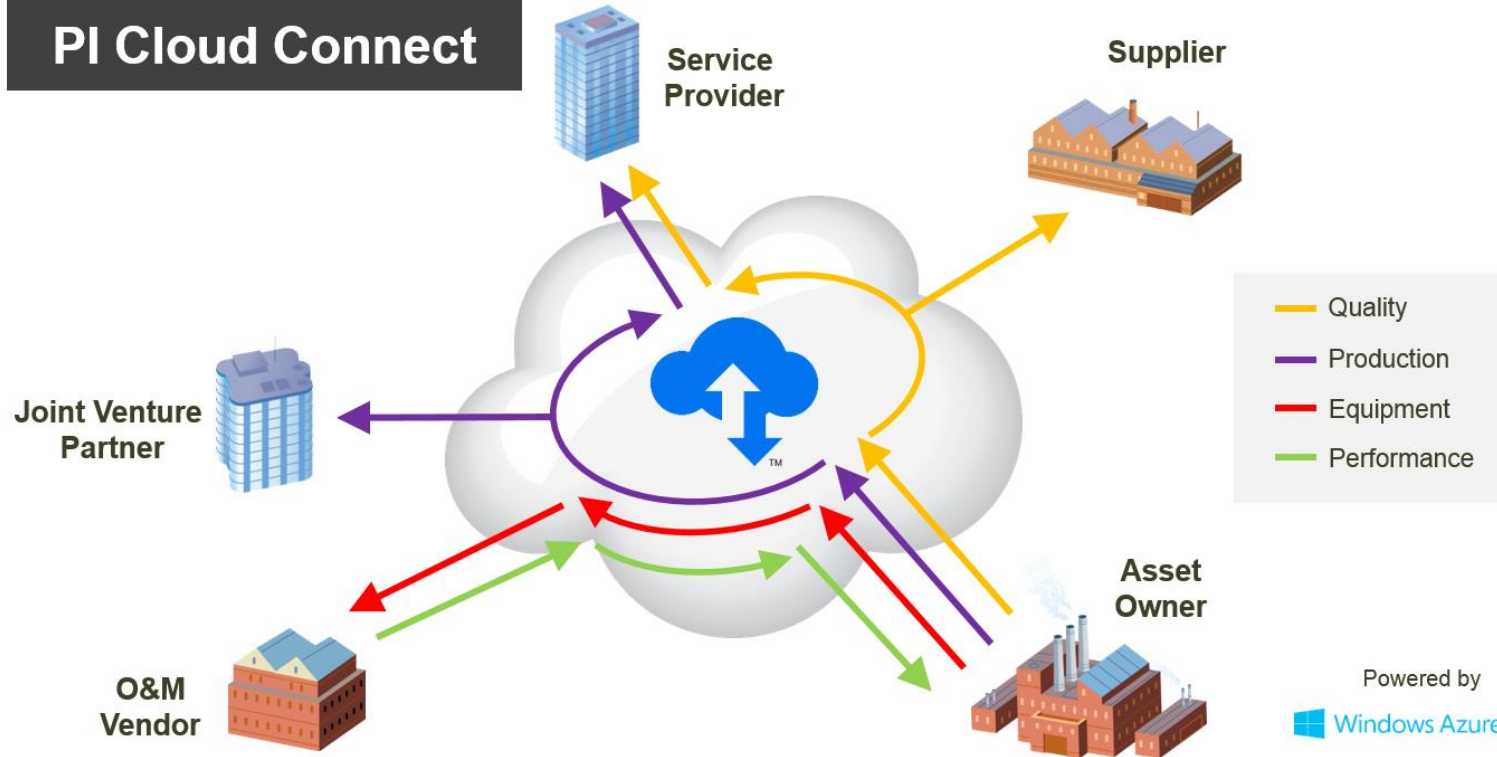


Downstream Systems

- PI Integrator for Esri ArcGIS
 - Beta now
- Working on Integrators for Business Systems like Hadoop, Microsoft BI, SAP HANA
- Prototypes in development

Theme 6: Cloud Services

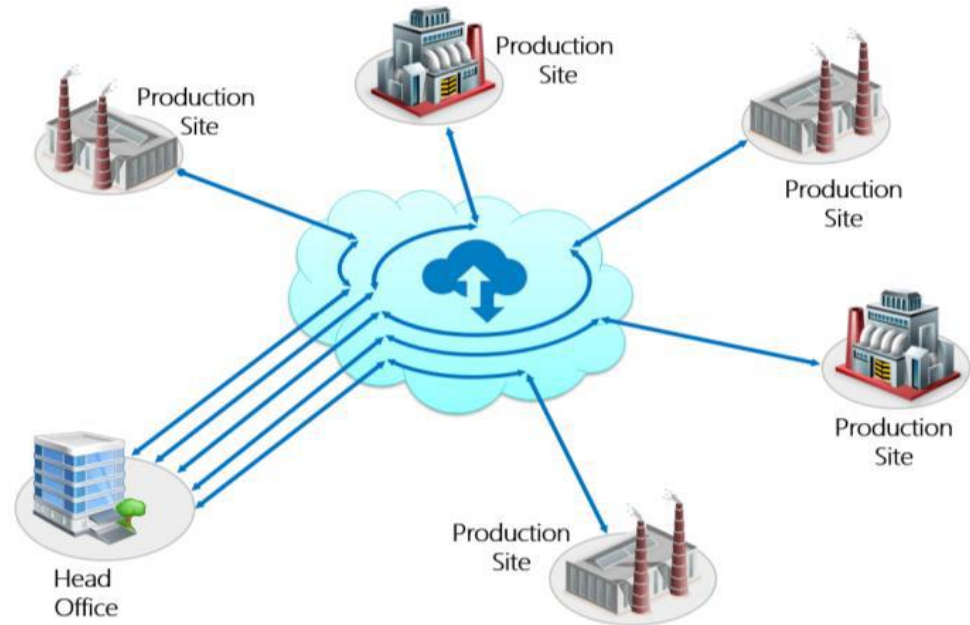
PI Cloud Connect



Theme 6: Cloud Services

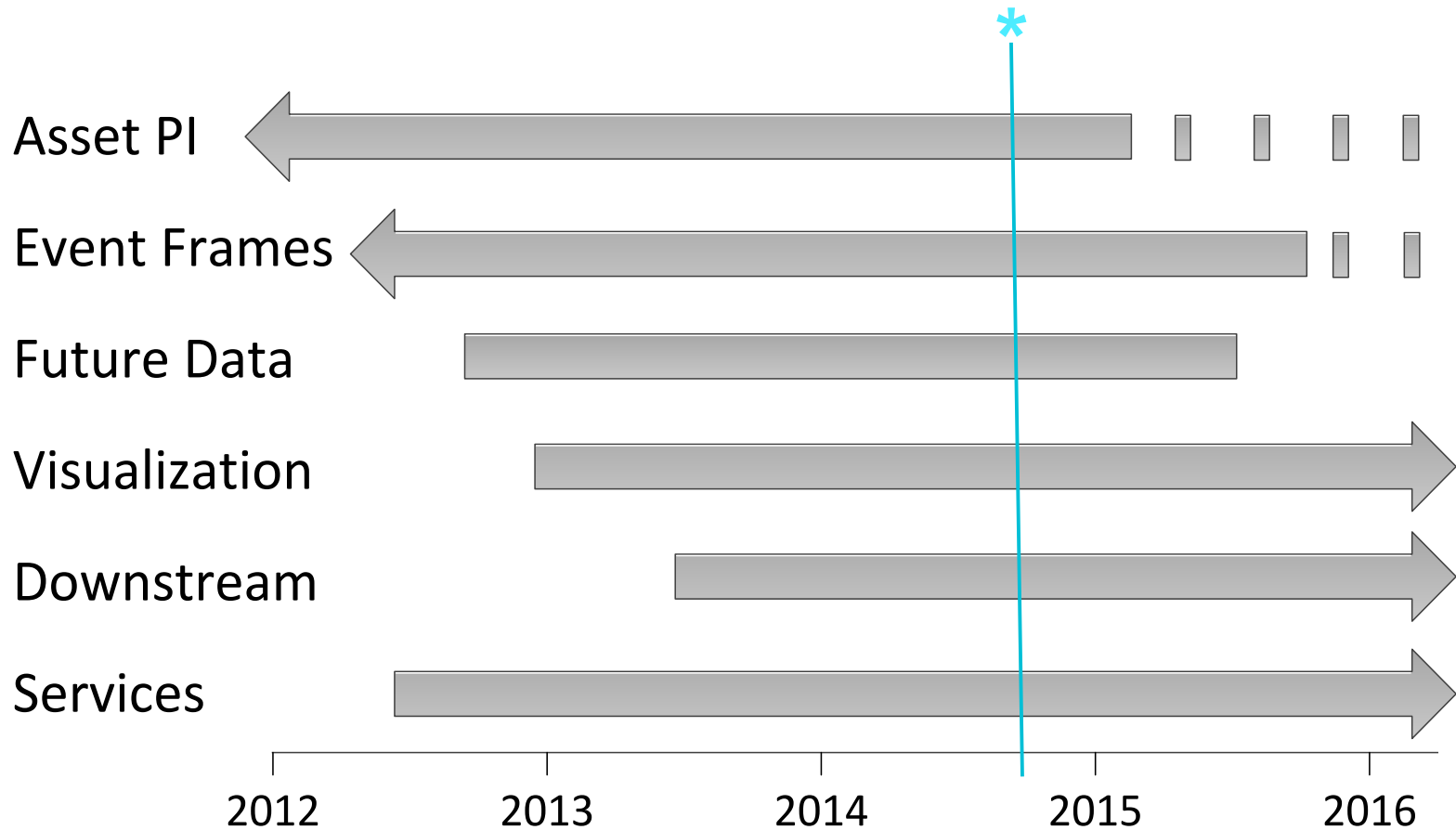
Sharing data within your company

With PI Cloud Connect, sites that monitor assets and collect real-time data can publish their data so that your head office can subscribe to it.



Cloud Services growing month by month

- PI Cloud Integrator for Esri ArcGIS (CTP)
- PI Cloud Access



Conclusions

- Go use Asset Analytics
- Start small with PI AF, but start
- PI Event Frames are ready for use
- PI ProcessBook display viewer and mobile device support make PI Coresight much more useful
- Go see the product talks

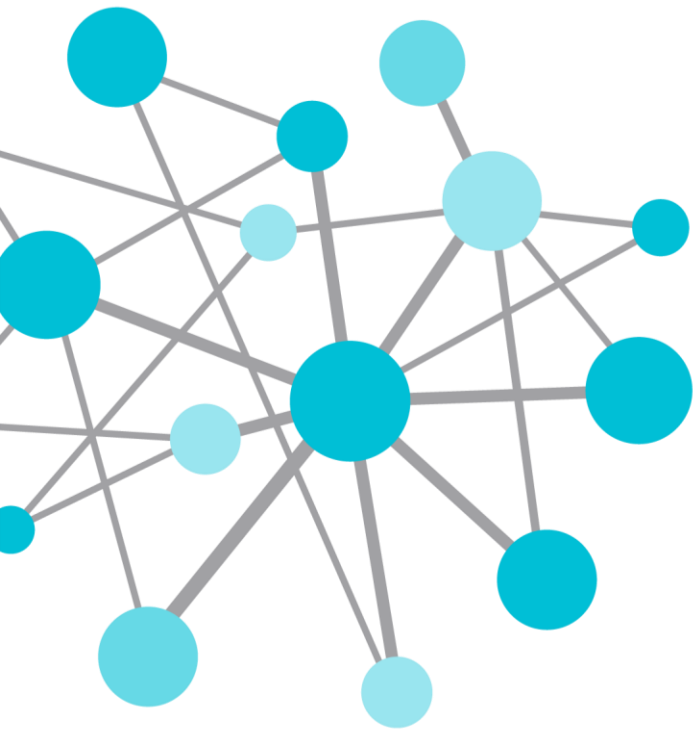
	Track 1	Track 2
2:40 Wed	PI WebAPI	PI Cloud Connect
3:20 Wed	Internet of Things	Security
4:10 Wed	PI Event Frames	PI Integrator for Esri ArcGIS
9:00 Thu	PI Coresight 2014	PI System 2014
9:40 Thu	PI Connectors	
10:20 Thu	PI System & Hadoop/Big Data	Developer Community
11:20 Thu	PI Manual Logger	OSIsoft & Microsoft Power BI
12:00 Thu	Migration of PI Batch to PI Event Frames	PI DataLink 2014

Klaus Pohl

klaus@osisoft.com

Director, Customer Services & Support (CSS),
EMEA

OSIsoft Europe GmbH



THANK
YOU

Brought to you by  **OSIsoft.**

Please don't forget to...

Complete the online survey for
this session

eventmobi.com/emeauc14



Share with your friends

#UC2014

