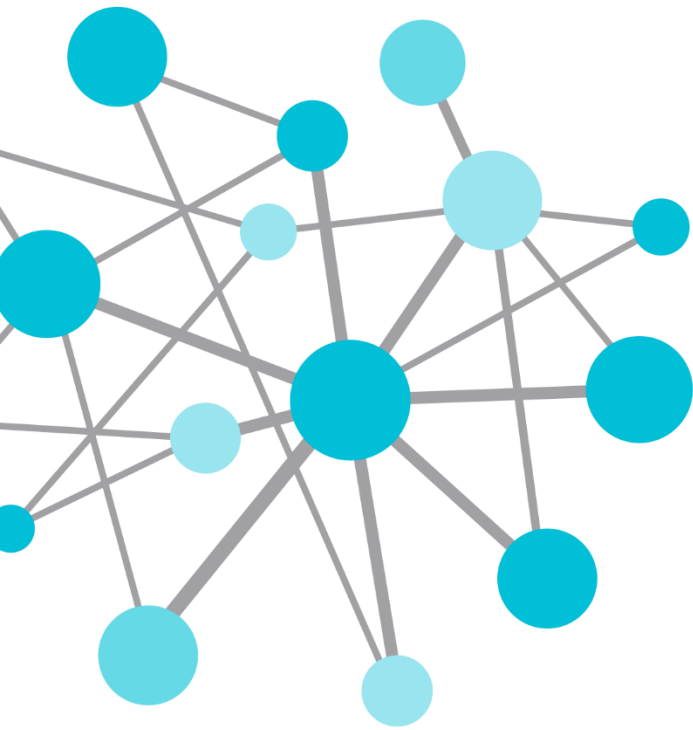


OSIsoft®

REGIONAL SEMINAR 2014

The **Power** of **Data**

DECISION READY IN REAL-TIME



The Power of Connection

Presented by **Max McKay, Senior Field Service Engineer**
mmckay@osisoft.com



Why is Connectivity Important?



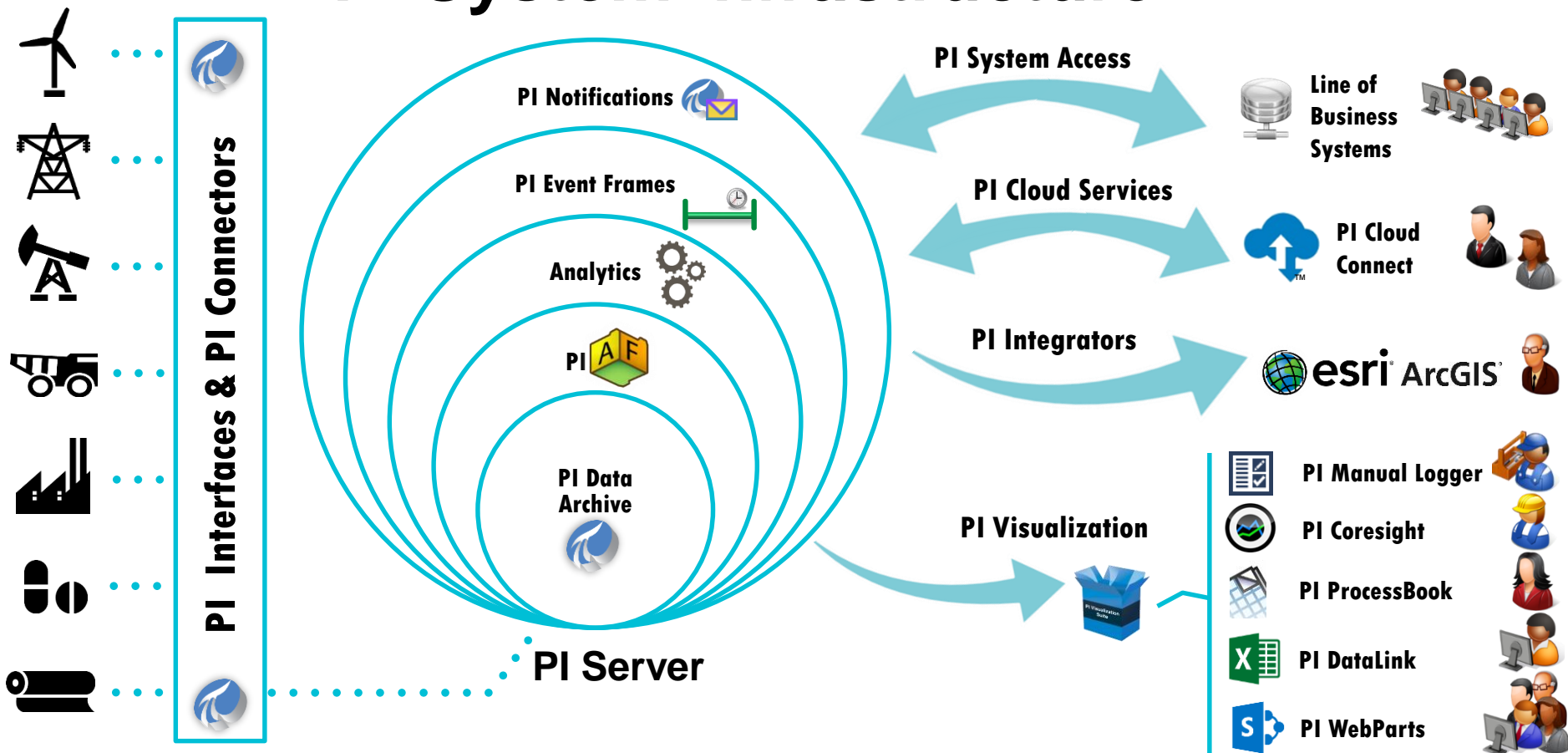
Context	Need	Solution
<p>More data sources available</p> <p>Advanced analyses require information from multiple systems</p> <p>Expanding ecosystem of mobile devices</p>	<p>Imperative need to access all operational data and analyses, any time, any where</p>	<p>Implement a modern, connected PI System</p>

*What
can this
look like?*

Solution

Implement a modern,
connected PI System

PI System Infrastructure



How
can all of this
be done at
your organization?

Key Steps



STEP 1

Connect
Your
PI System to
Your Data



STEP 2

Connect
Your
PI System to
Your Users



STEP 3

Connect
Your
PI System
Across
Boundaries

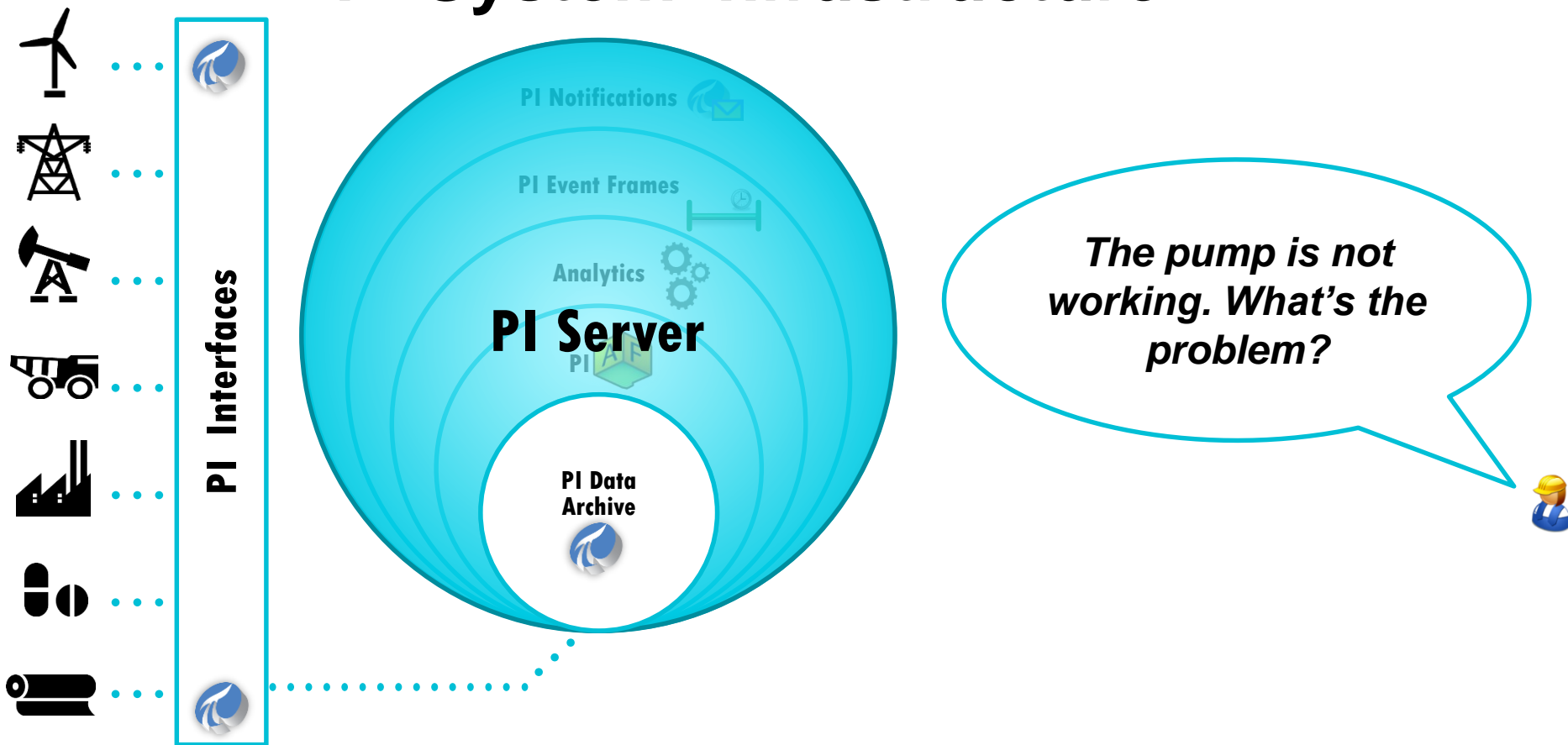
A background graphic featuring a network of light blue circles of varying sizes connected by thin gray lines, creating a web-like structure.

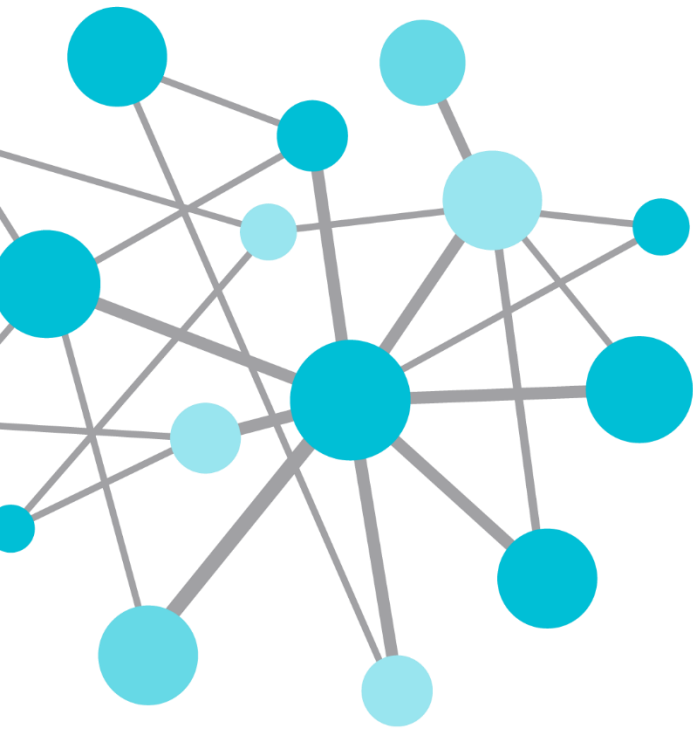
Step

1

Connect Your PI System to Your Data

PI System Infrastructure





Connect Data Sources Into the PI Data Archive

PI Interfaces – Bringing the Data in

Vendor Specific (PLC, DCS, SCADA)

- ABB
- Bailey
- Fisher
- Foxboro
- Allen-Bradley
- Honeywell

Generic (Protocols and Standards)

- OPC
- Modbus
- BACnet
- DNP 3.0
- ODBC
- Text Files

✓ More than 450 PI Interfaces developed!

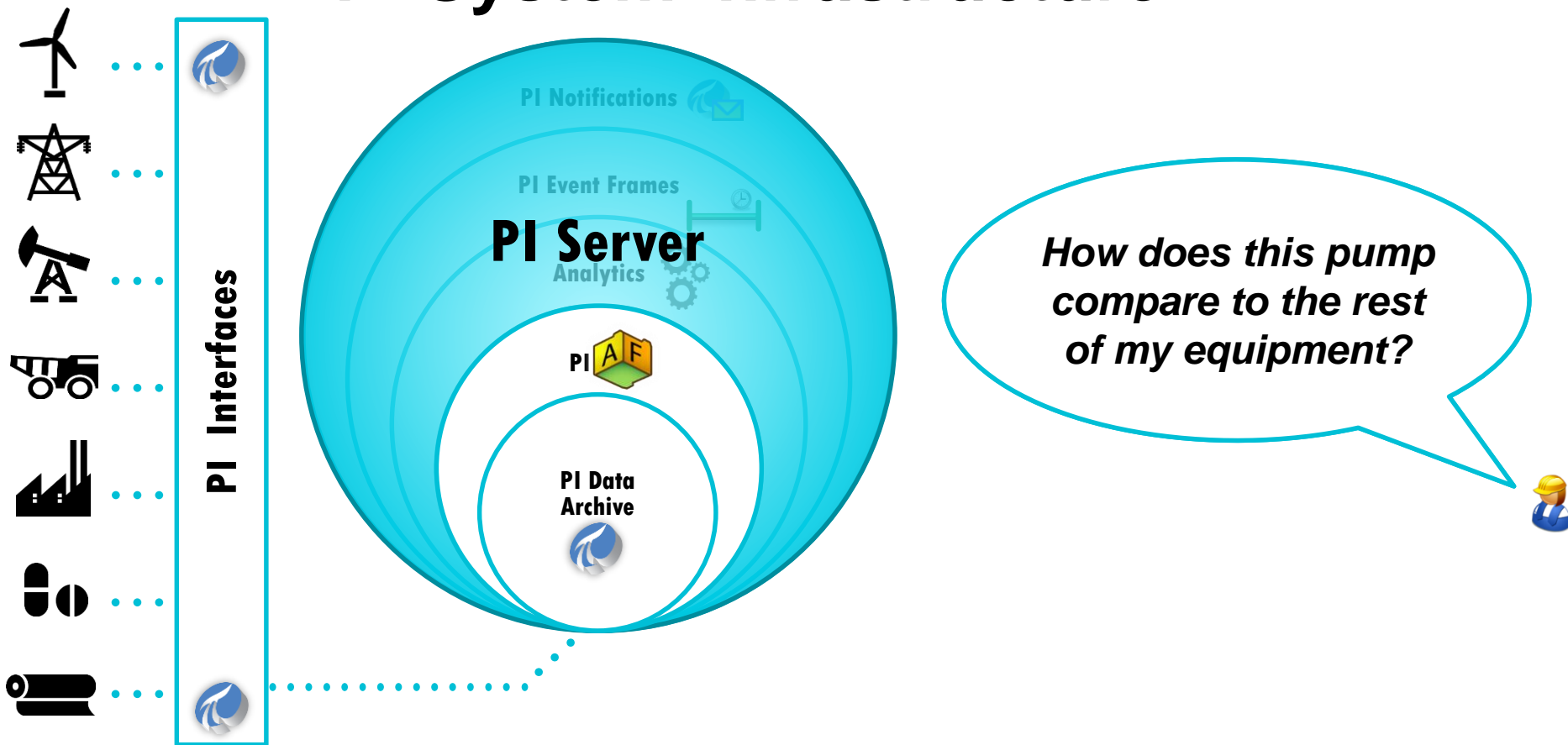
PI Data Archive and PI Tags

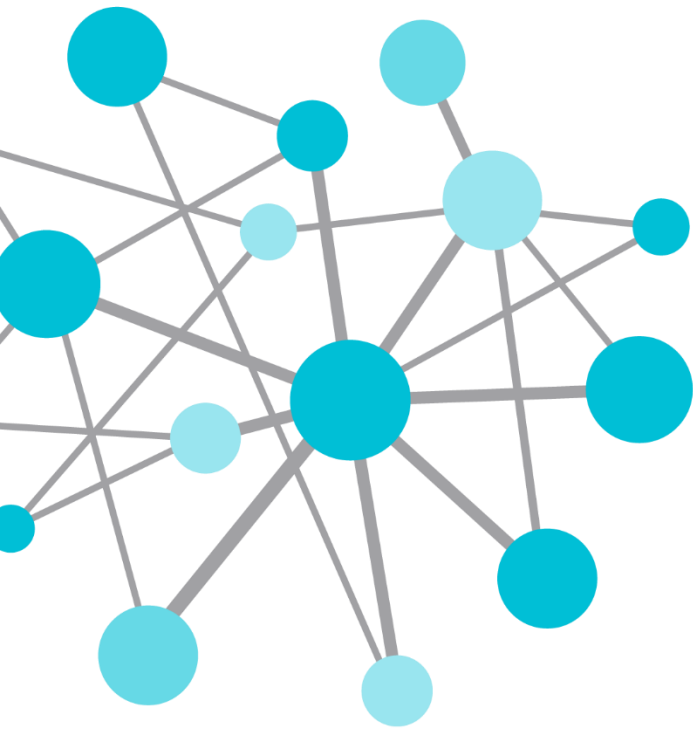
Tag-Centric



- Based on **Control System point names**
- **Traditional** method of data storage
- Leverage **historical knowledge** built around tags
- **Simple** deployment

PI System Infrastructure





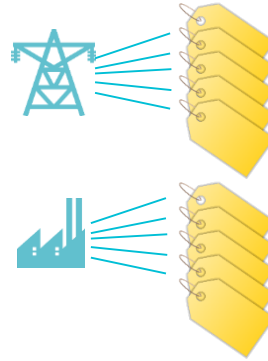
Connect Data Sources Into the PI Data Archive and PI AF

PI Tags and PI AF Assets: Both Approaches Add Value

Tag-Centric



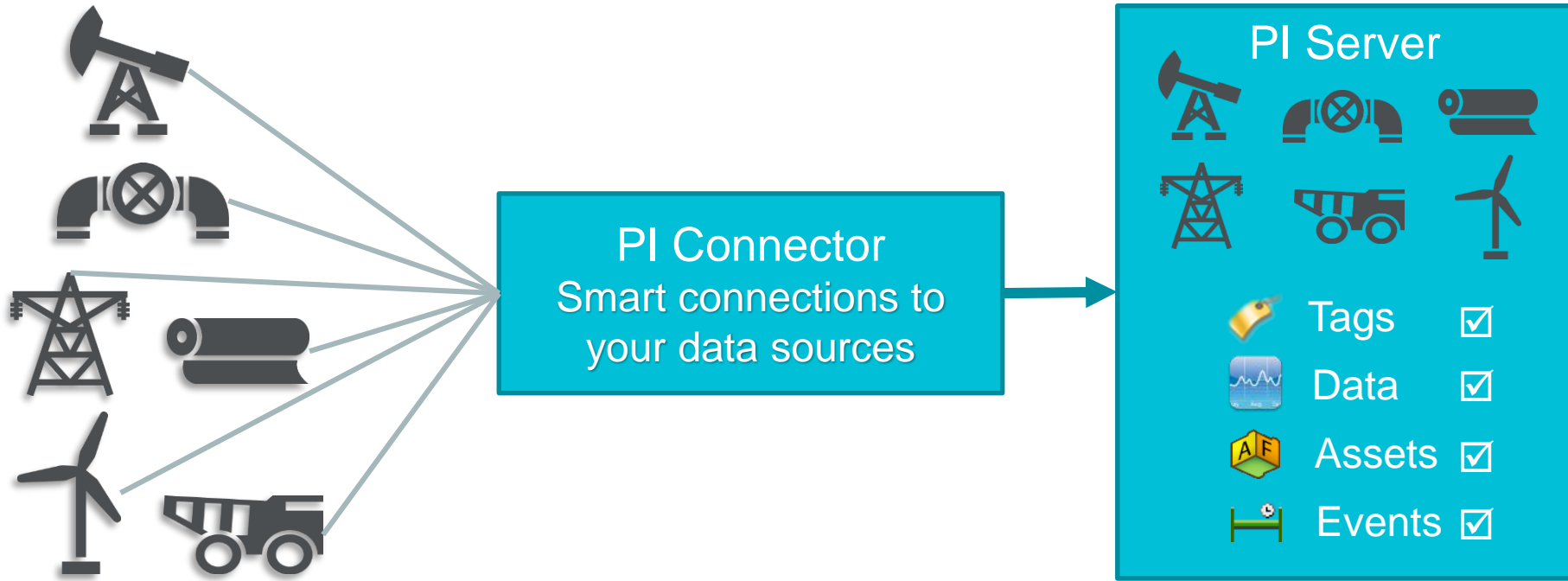
- Based on **Control System point names**
- **Traditional** method of data storage
- Leverage **historical knowledge** built around tags
- **Simple** deployment



Asset-Centric

- Named by **asset and property**
- Organize your assets **hierarchically** and **logically**
- Build **templates** to standardize and compare assets
- **Scale** your system

Introducing PI Connectors, the Next Generation of Data Acquisition



Advantages of PI Connectors

- Automatically **discover and create** assets and tags
- Future versions will **collect event** data types (PI Event Frames)
- **Simple configuration**
- Accommodate **higher data rates**
- Enhanced **security**
- **Linux** operating systems supported



CygNet Connector Administration Site

Overview Data Source List Server List Diagnostics

Overview

CygNet connector details

Version 1.0.0.10

Status of the connector

Connector running as OSI\bandersen

 Connector is stopped - [Start connector](#)

Data sources for the CygNet connector

 CygNet Data Source (Connector stopped)

[Add or modify data sources](#)

Servers configured to receive data from the connector

 PI Data server : IntOne (Connector stopped)

 PI Asset server : IntOne (Connector stopped)

[Add or modify servers](#)

PI Connectors Have Arrived



Released

- PI Connector for IPMI



Beta

- PI Connector for CygNet
- PI Connector for Ethernet/IP
- PI Connector for Kongsberg

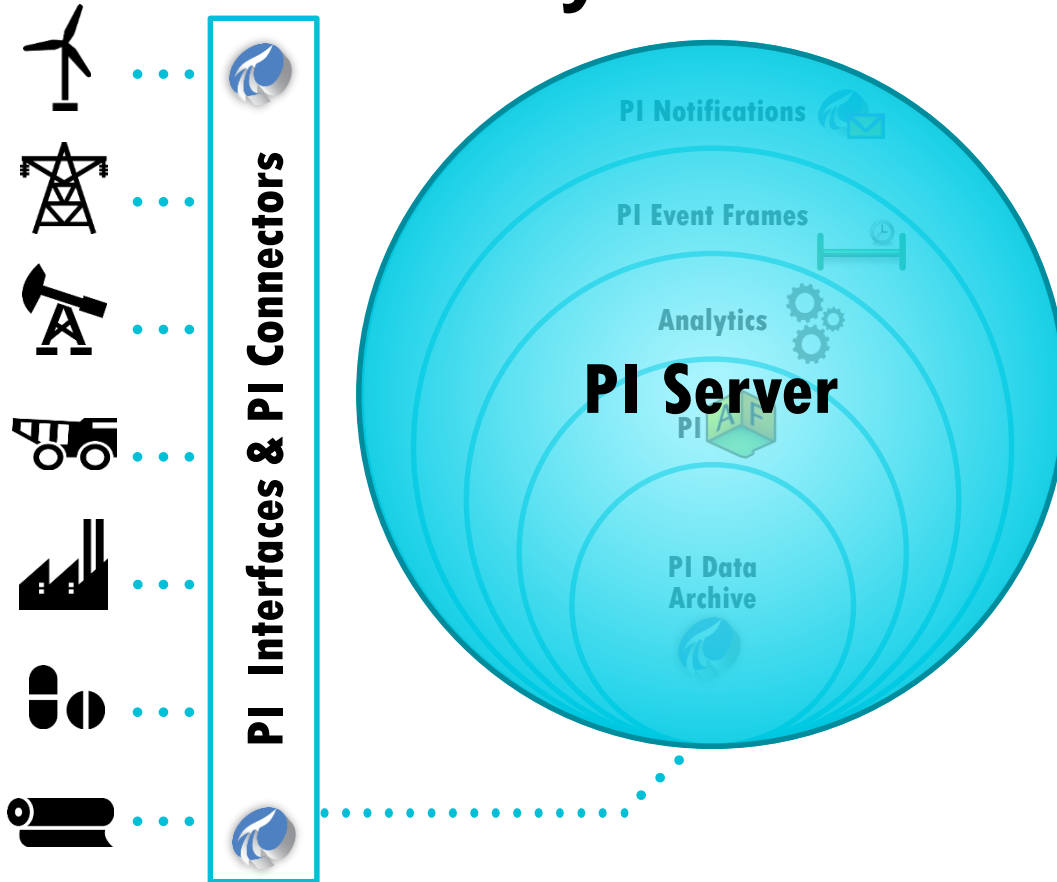


Under
development

- PI Connector for Wonderware Historian
- PI Connector for IEC 60870-5-104

Much more to come!

PI System Infrastructure



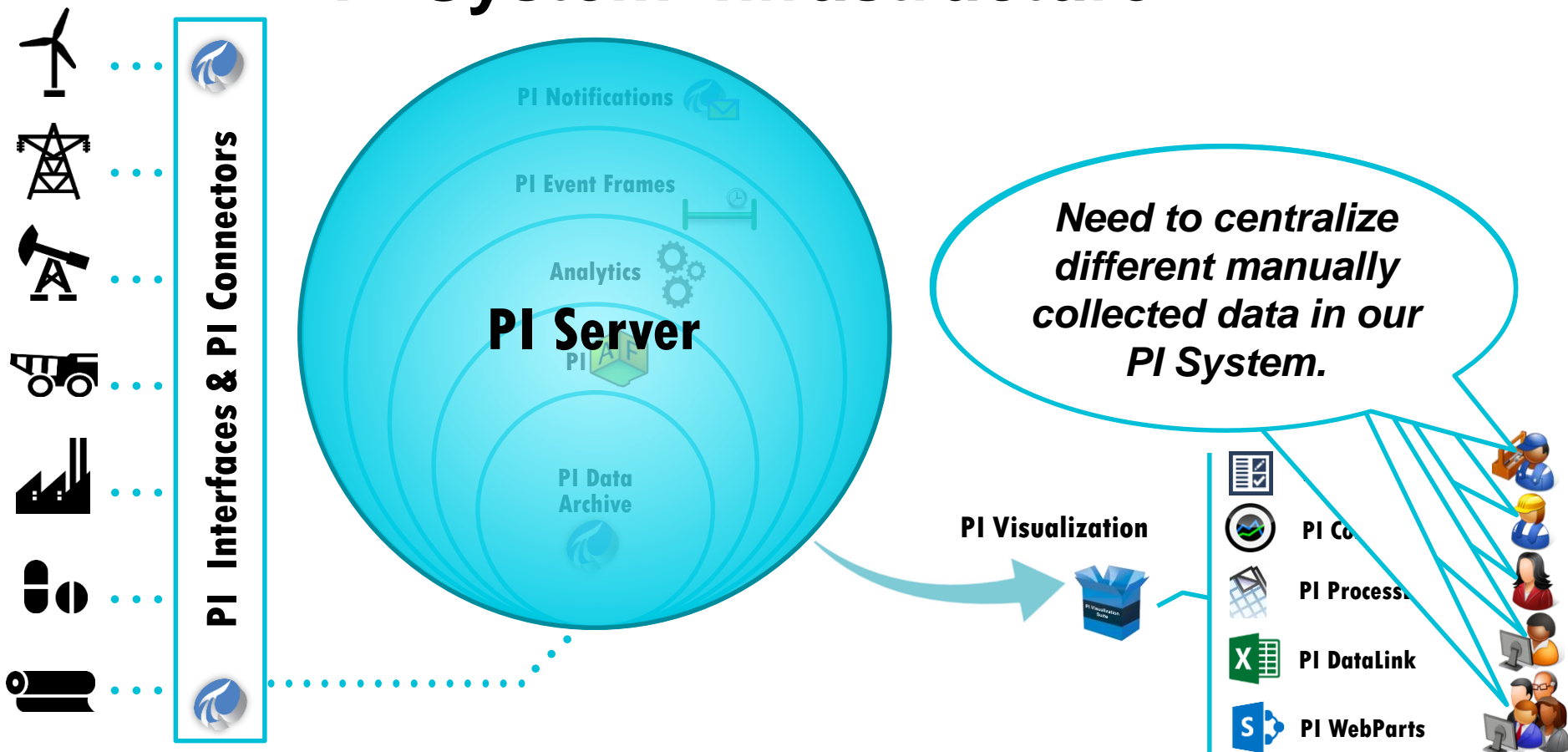


Step

2

Connect Your PI System to Your Users

PI System Infrastructure



Visualization Landscape



PI Coresight

Ad hoc analysis and collaboration



PI Manual Logger
Manual entries, fast and secure from anywhere



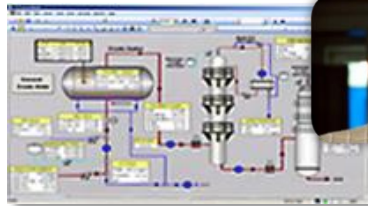
PI WebParts

Composite apps, shared broadly



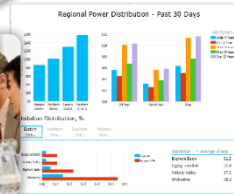
PI ProcessBook

Display authoring and process monitoring



PI System Access

Business analytics for the enterprise



Insights & Collaboration

Collect

Share

Report

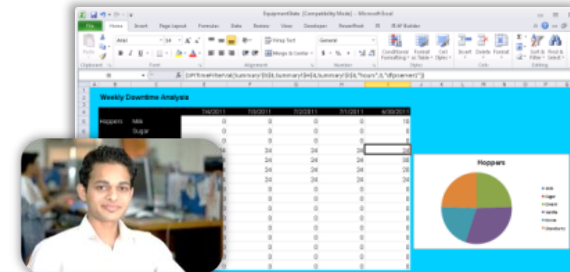
Access

Explore

Monitor

PI DataLink

Reporting and Analytics in Microsoft Excel





Recycle Bin



PetroLux.piw



PetroLux
Oil Wells
Daily.xlsx



Desktop Files



24

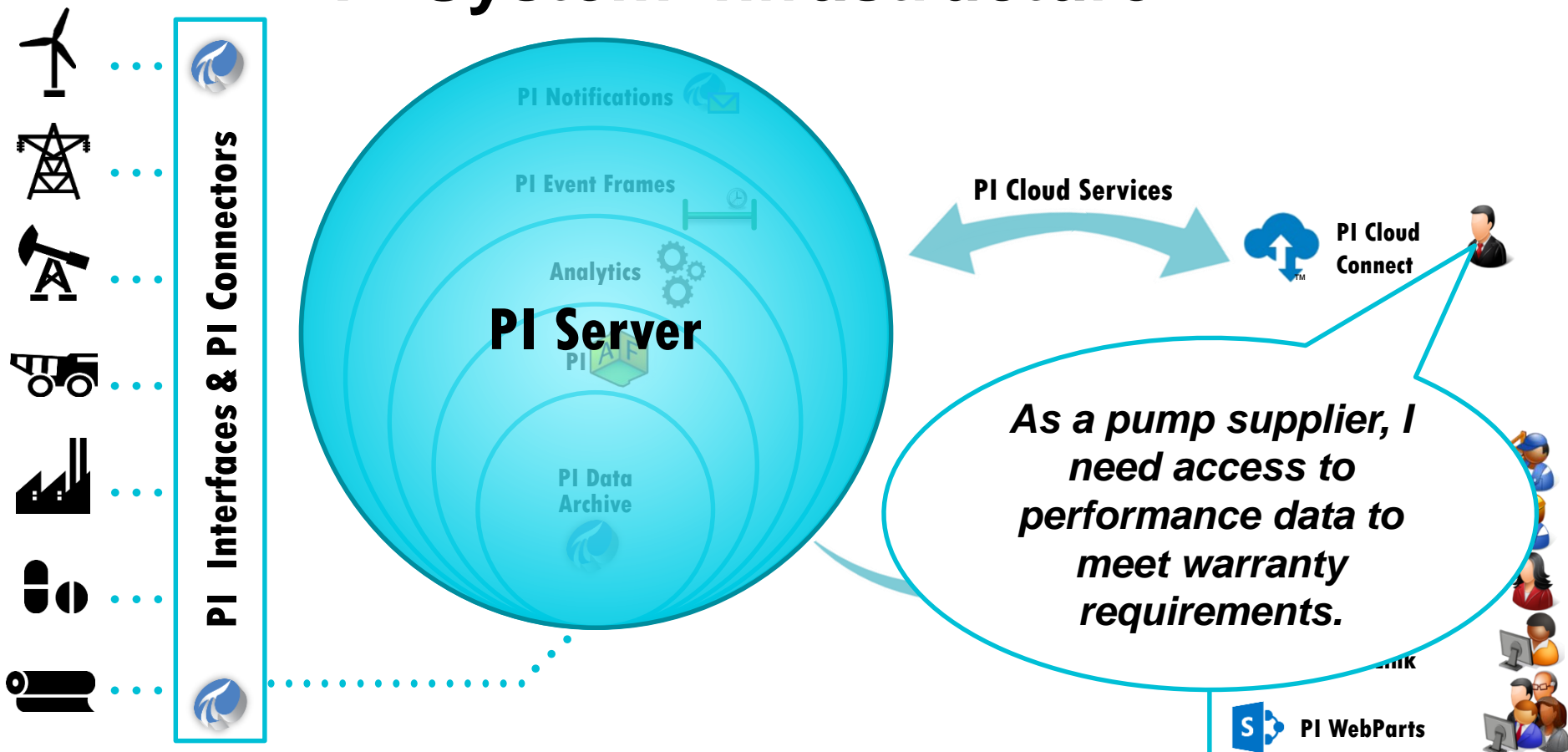


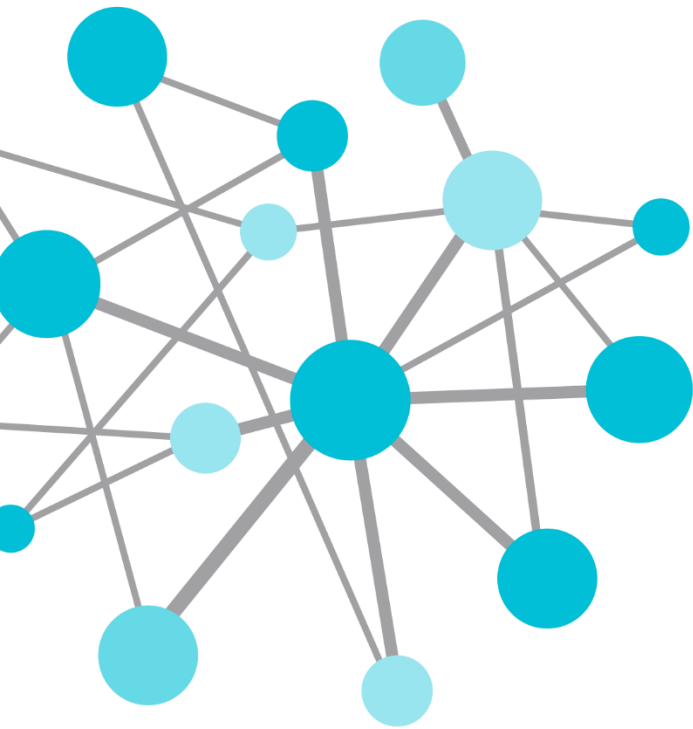
Step

3

Connect Your PI System Across Boundaries

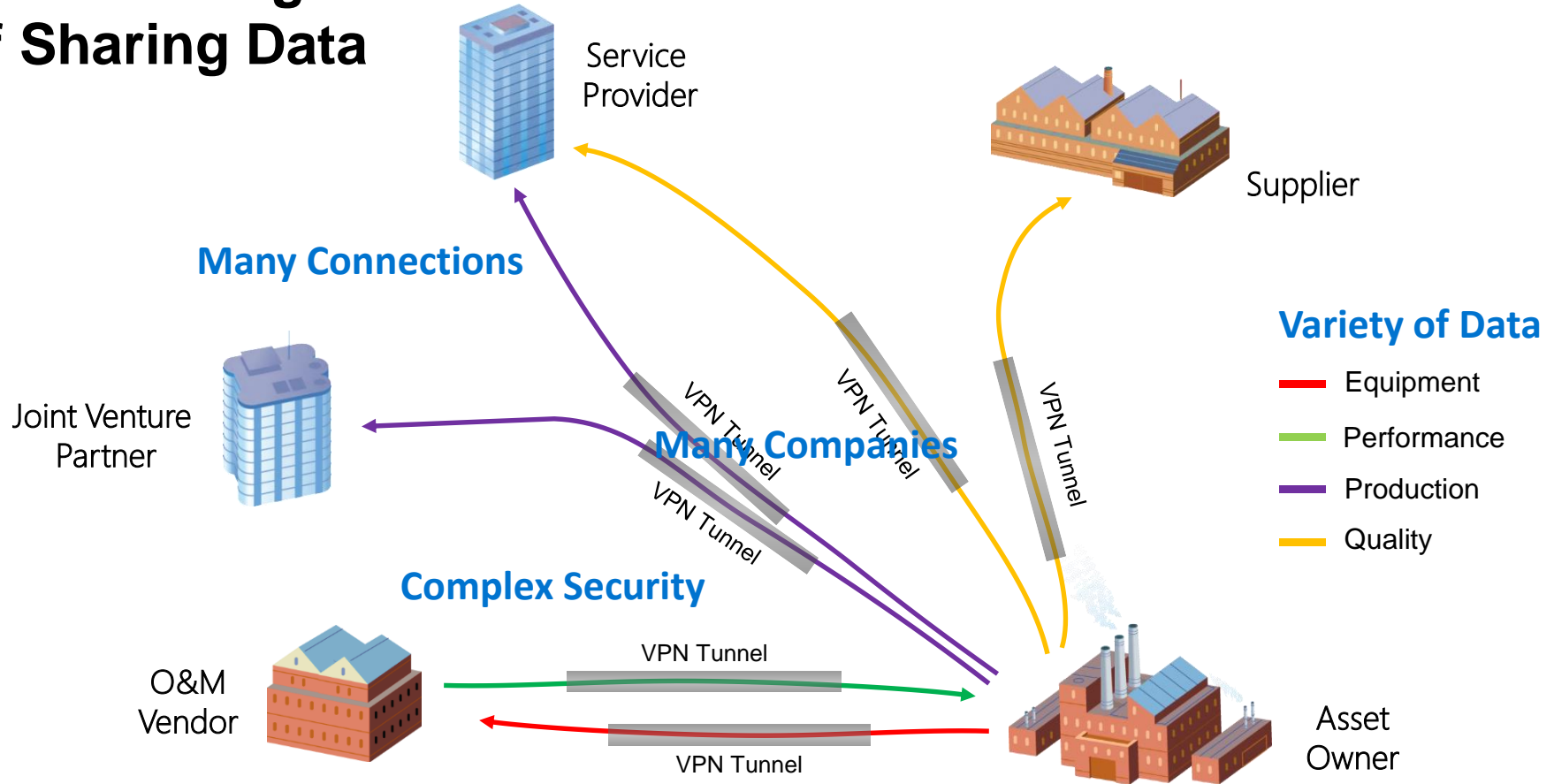
PI System Infrastructure



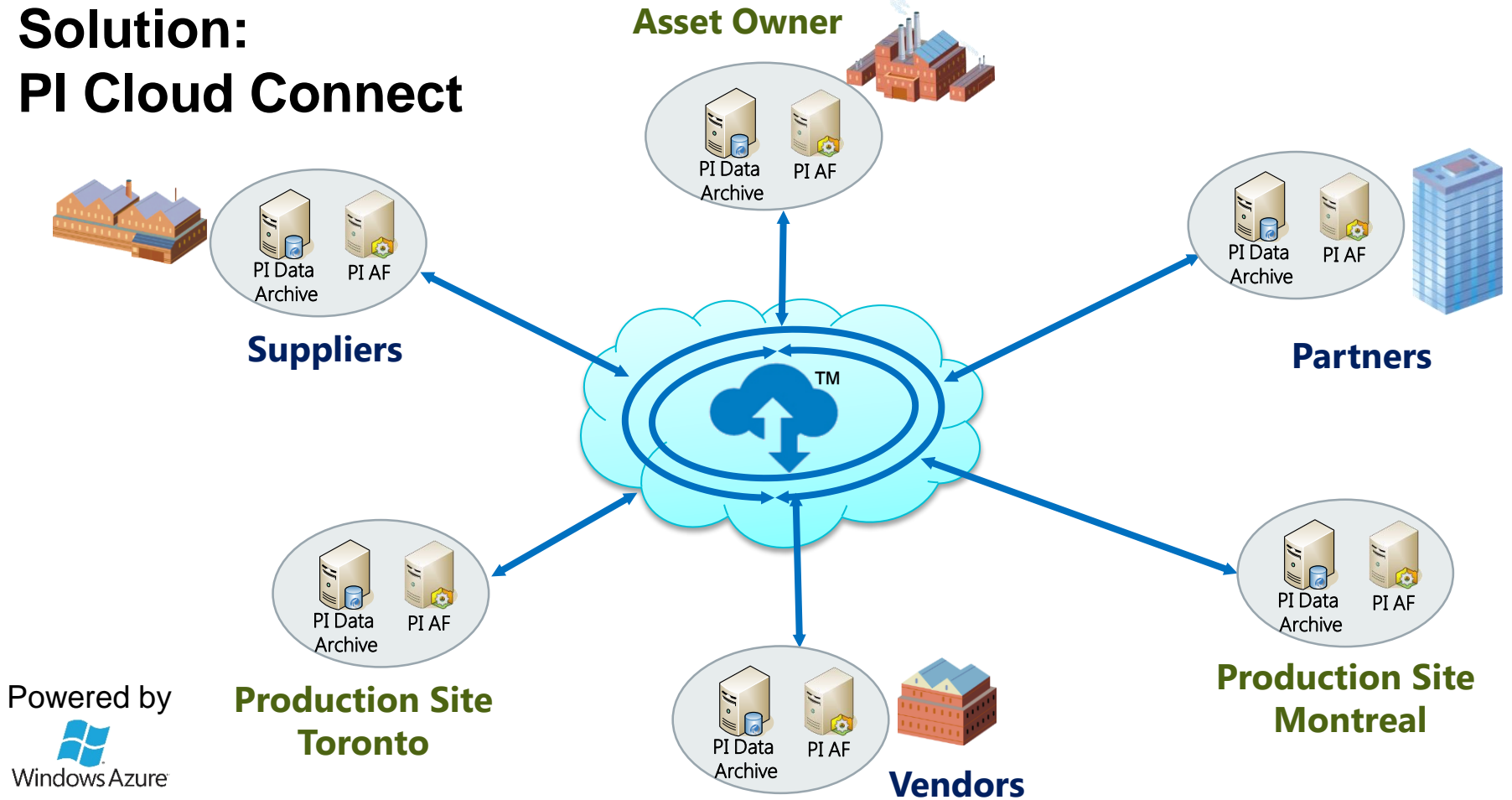


Securely Connect PI System Enterprises via the Cloud

The Challenges of Sharing Data



Solution: PI Cloud Connect



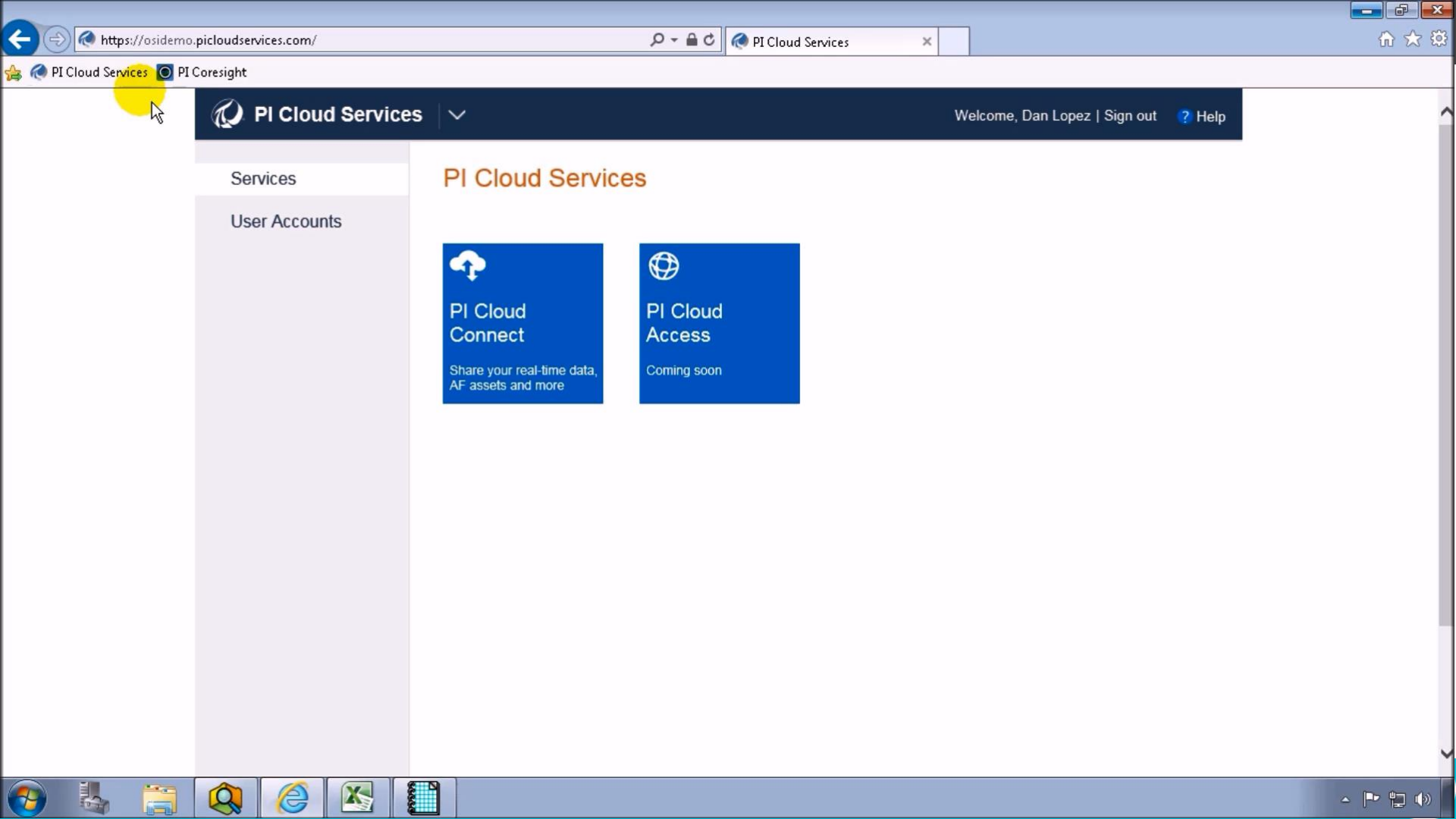
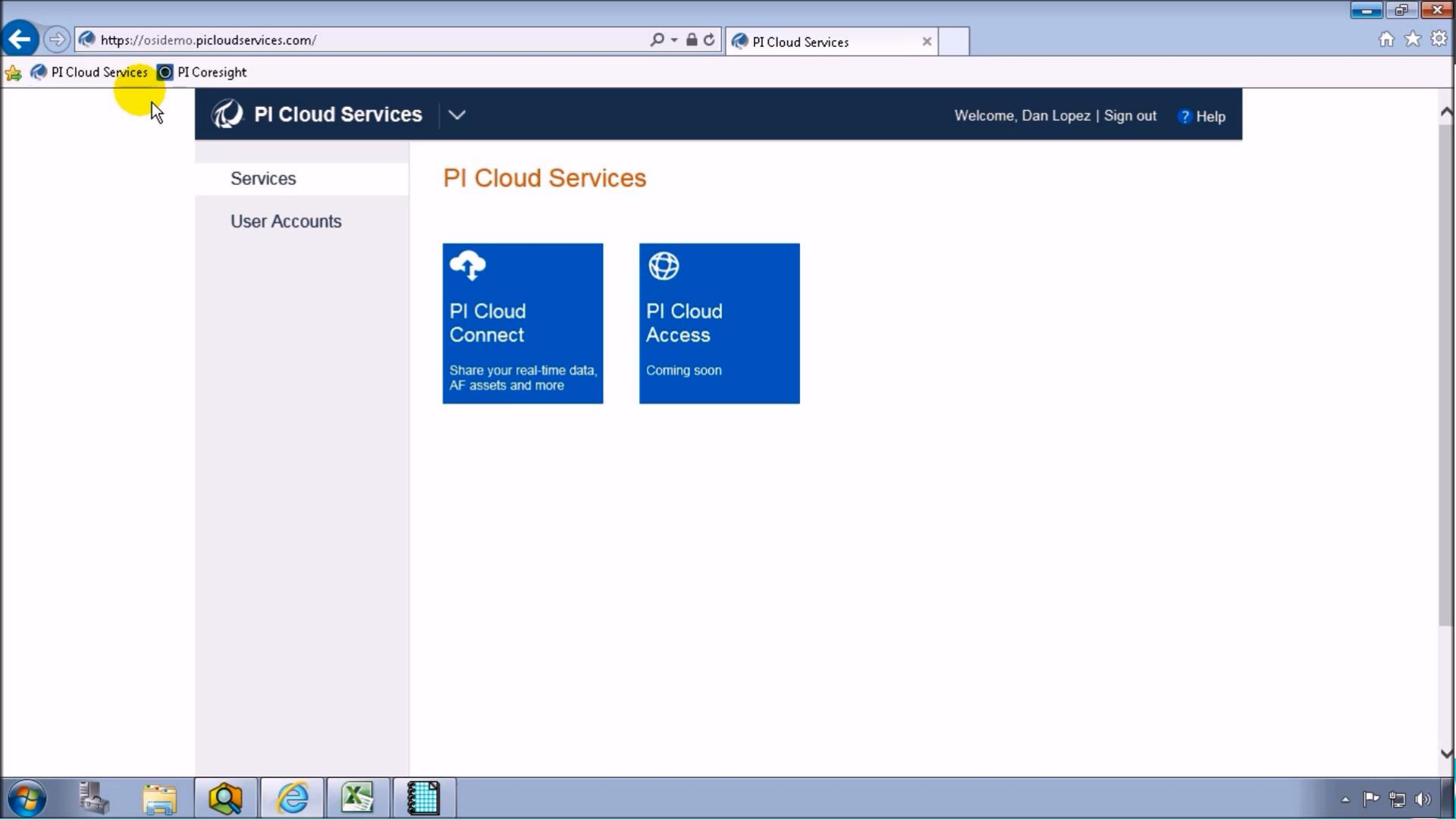
Powered by

Windows Azure

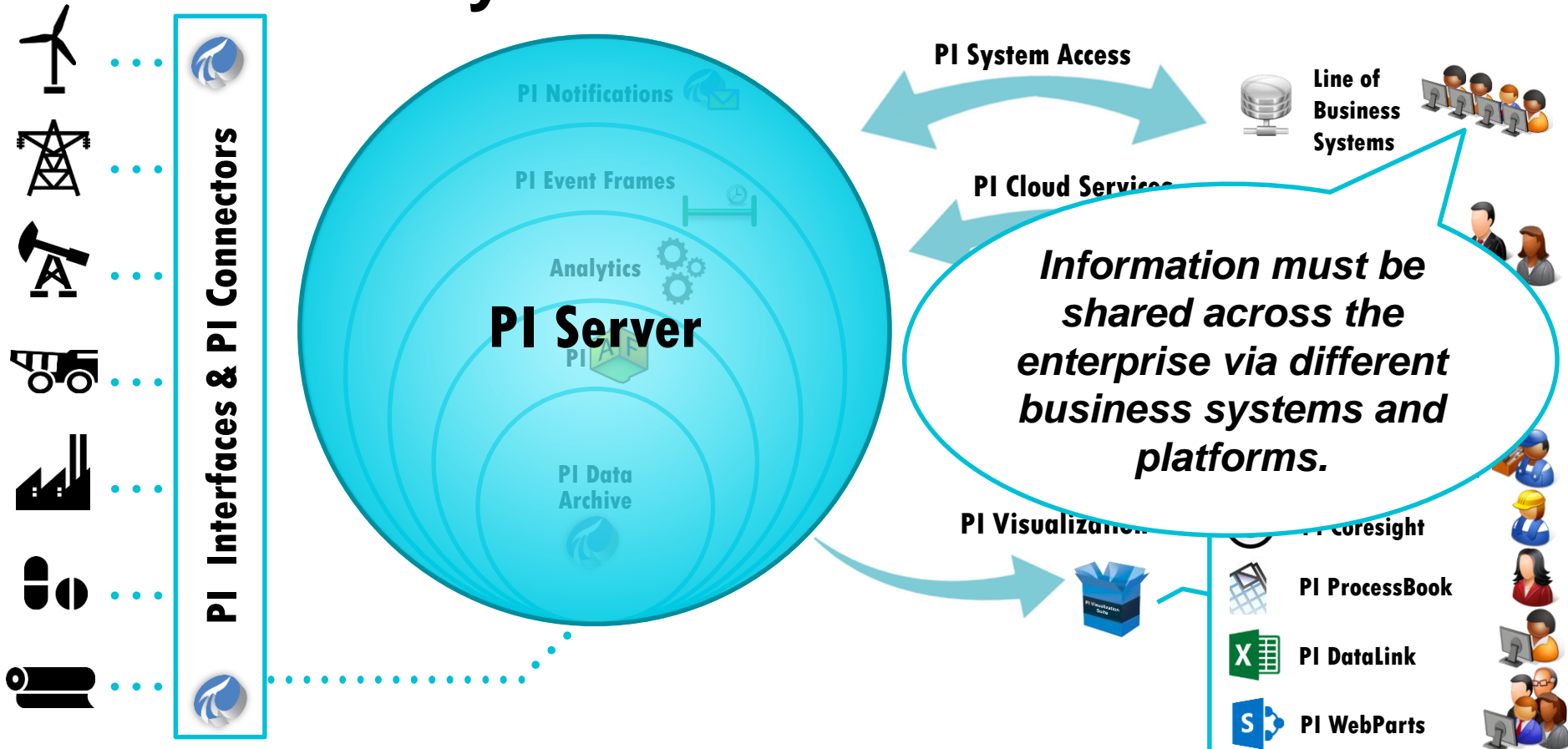
**Production Site
Toronto**

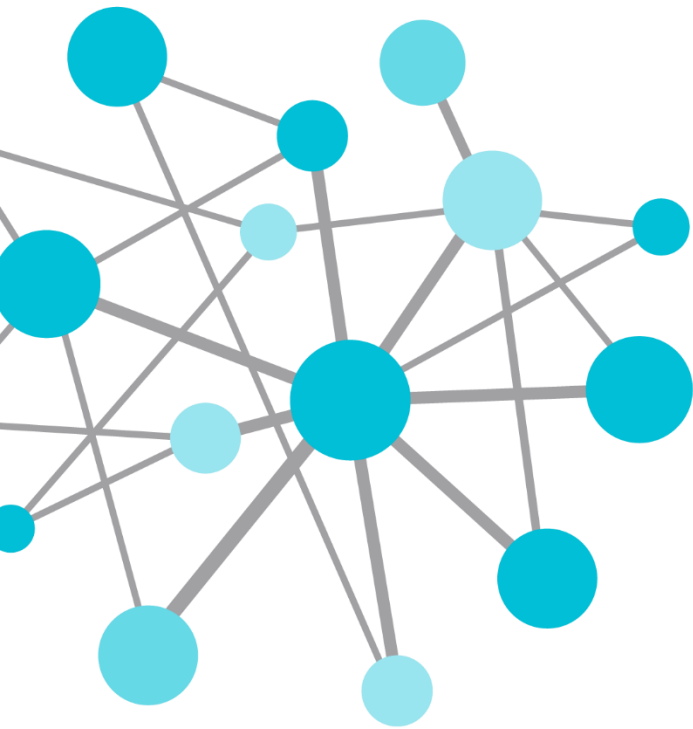
**Production Site
Montreal**

Vendors



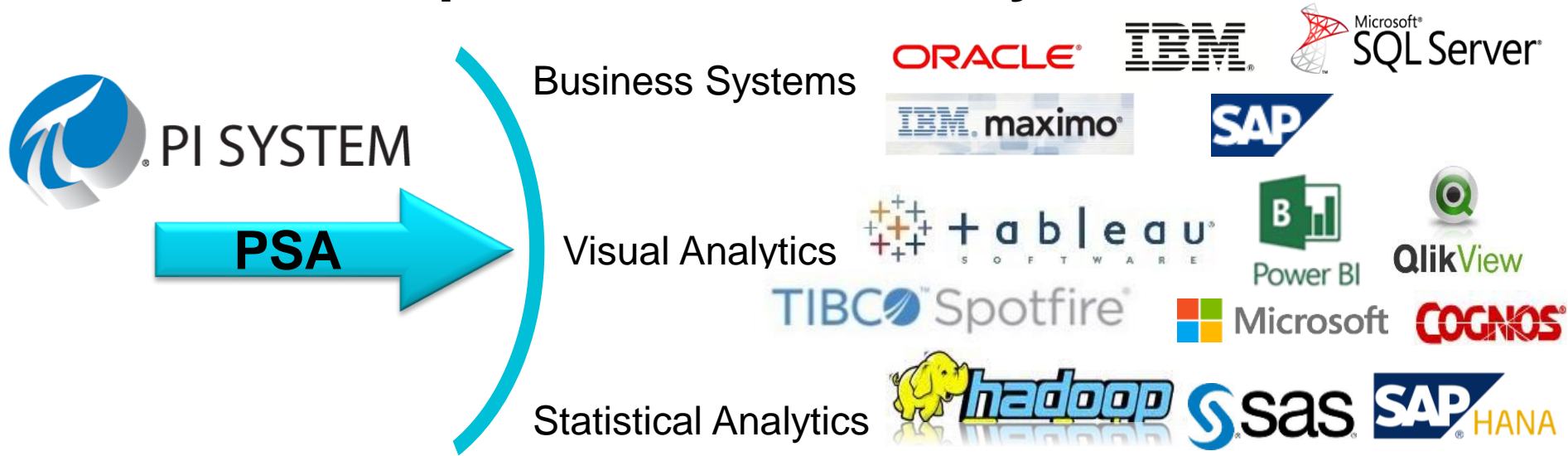
PI System Infrastructure





Connect Your PI Systems to Any System and Any Device

Solution: Expose Data with PI System Access



SQL Family

PI OLEDB Enterprise
PI JDBC Driver
PI ODBC Client

Web Services

PI Web API
(REST/OData)
PI Web Services

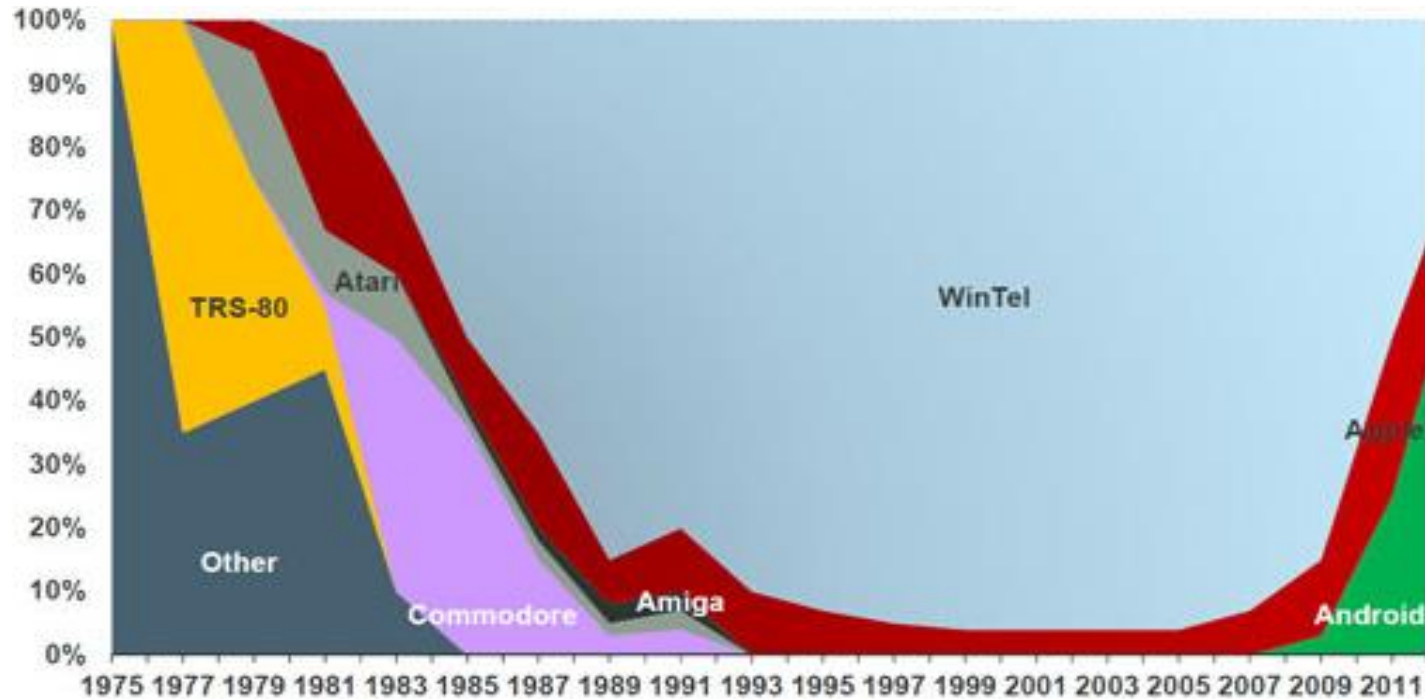
OSIsoft SDK

AF SDK

OPC Servers

PI OPC DA Server
PI OPC HDA Server

Why From Any Device?



Pre-PC

PC

Devices

Business Challenge Rephrased...

**We need to connect
applications running on
these devices and platforms ...**



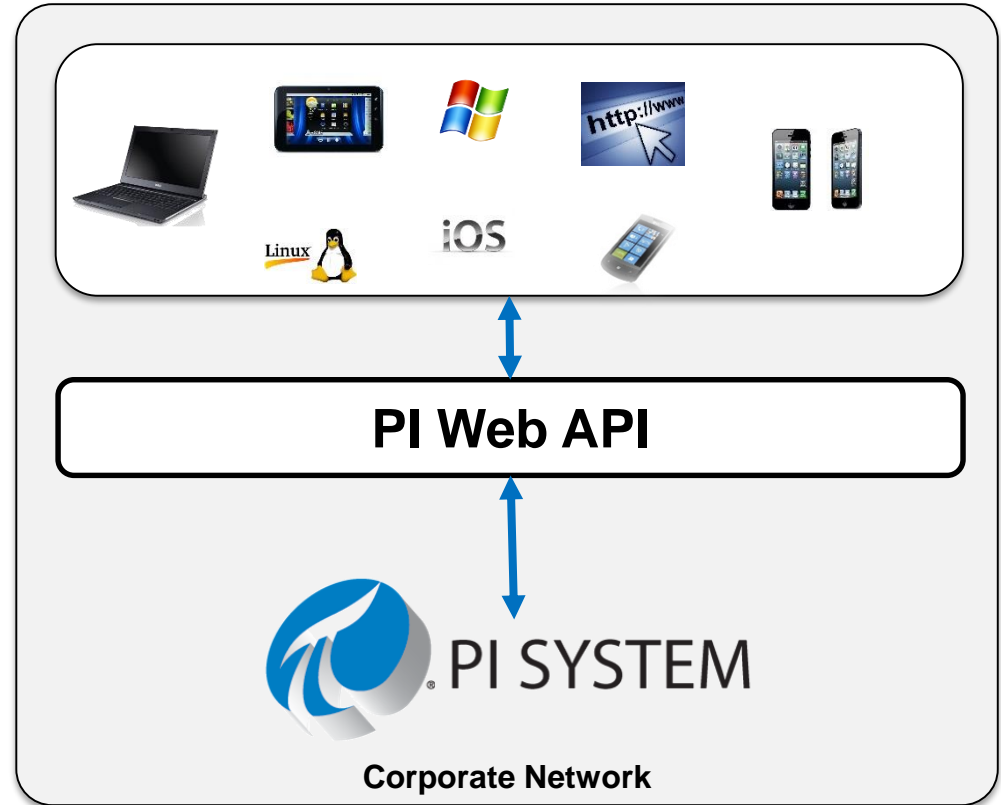
with this ...



Enter the PI Web API

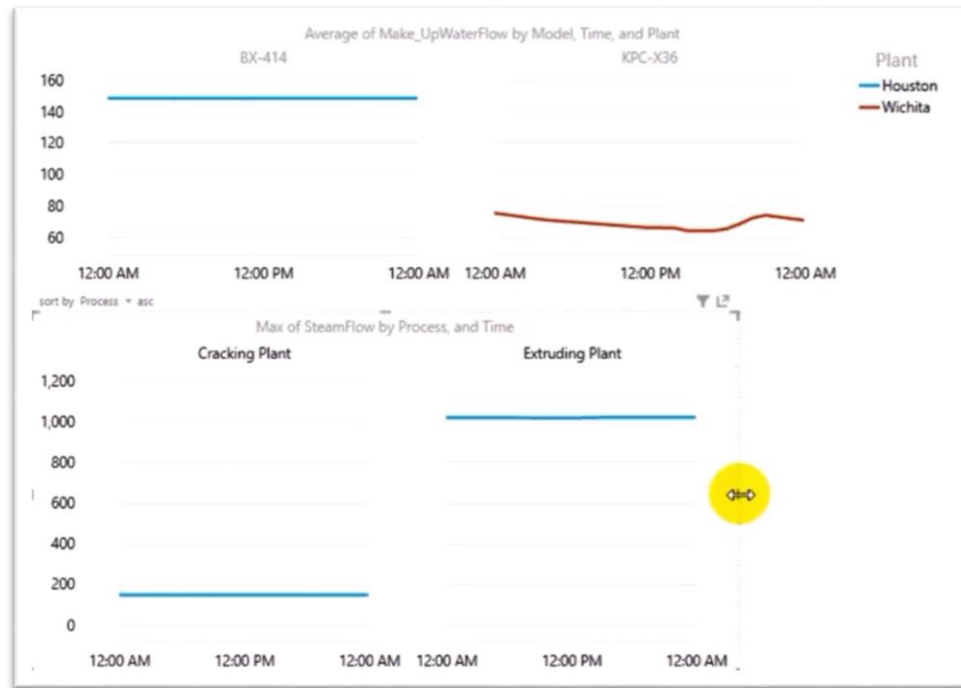
Developers build applications:

- Platform independent
- Device and OS independent
- Programming language agnostic
- Supports **REST/OData**

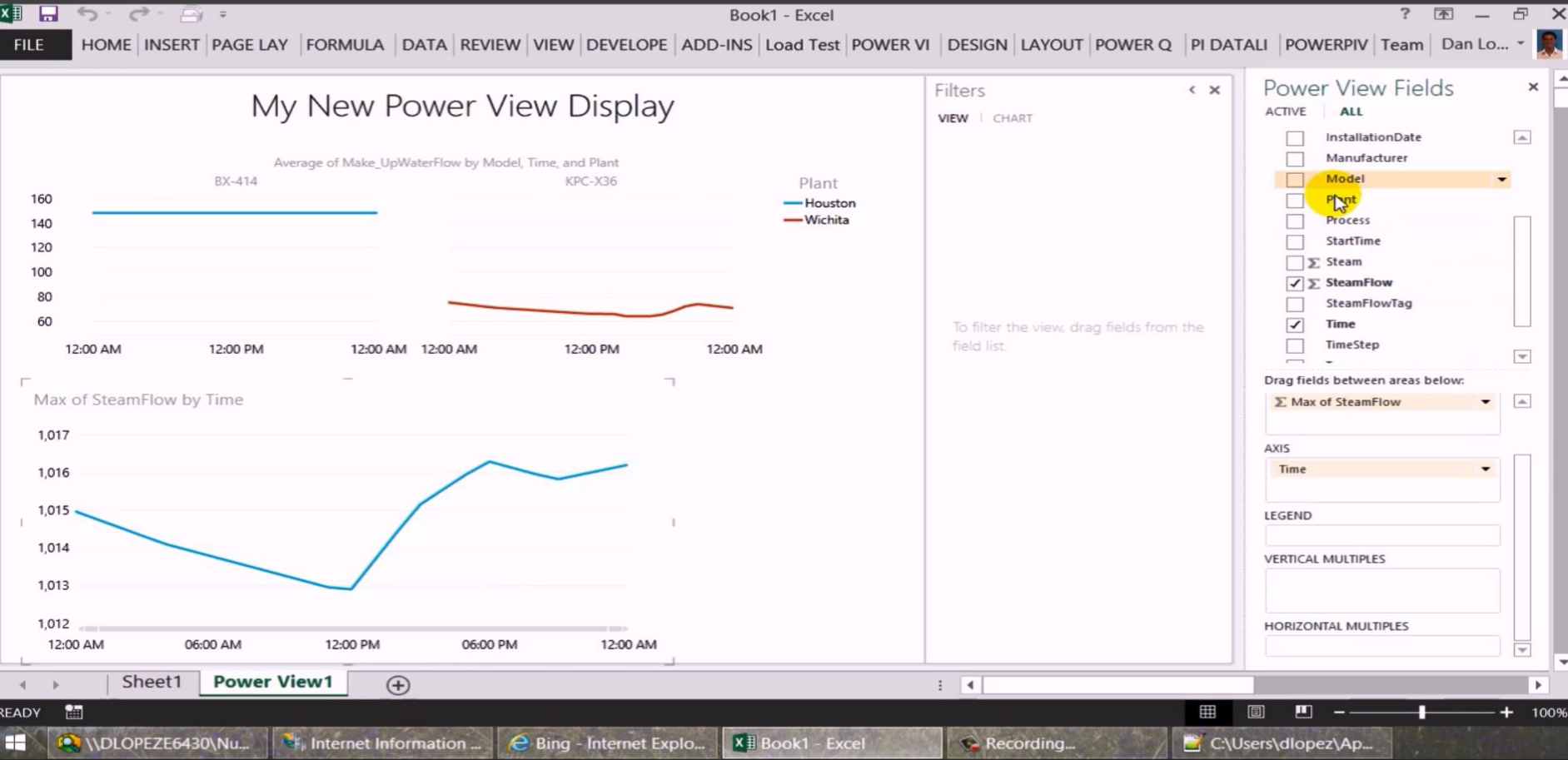


Demonstration

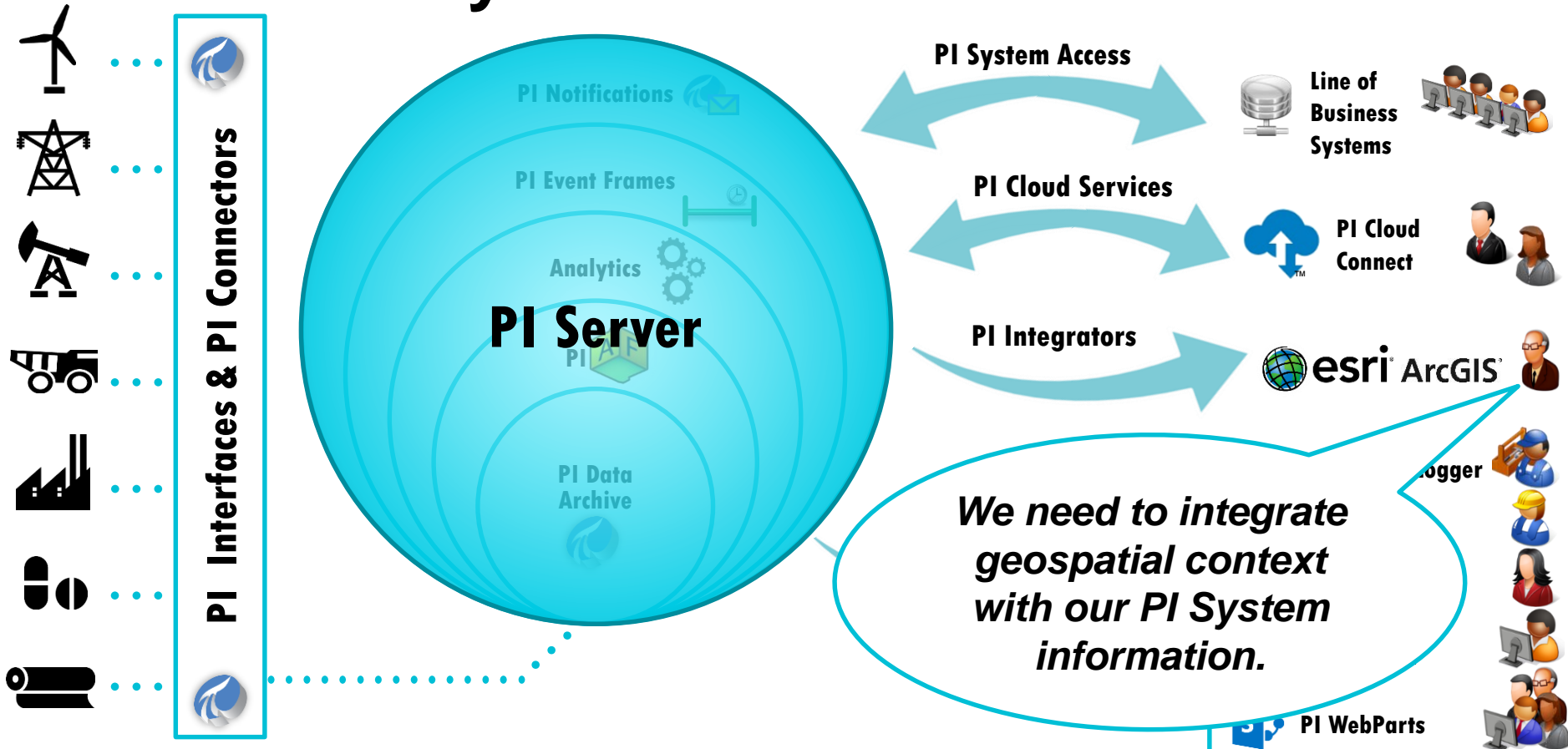
- PI Web API as an OData feed
- Expose PI System data to Microsoft Power BI tools
- Monitoring of Oil & Gas assets

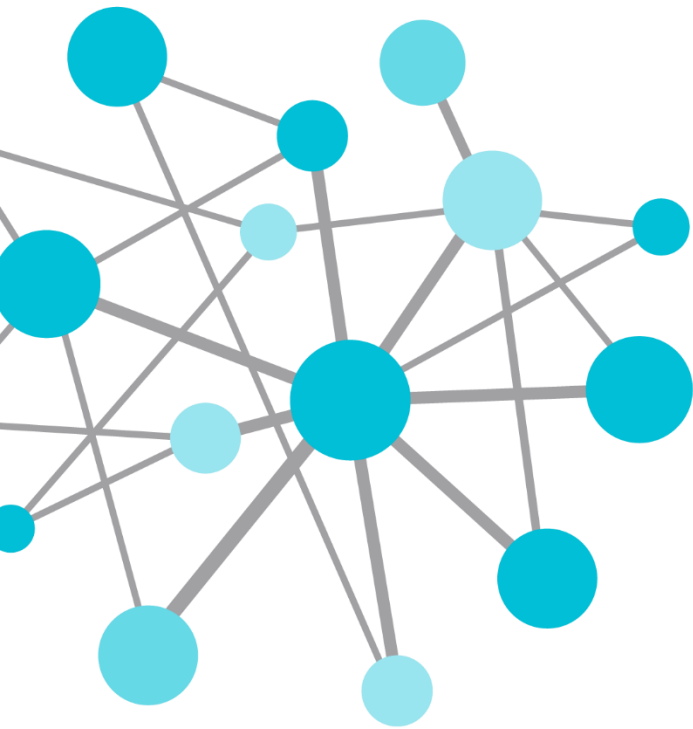


Connecting to the PI System via OData



PI System Infrastructure





Connect Your PI System to Esri ArcGIS

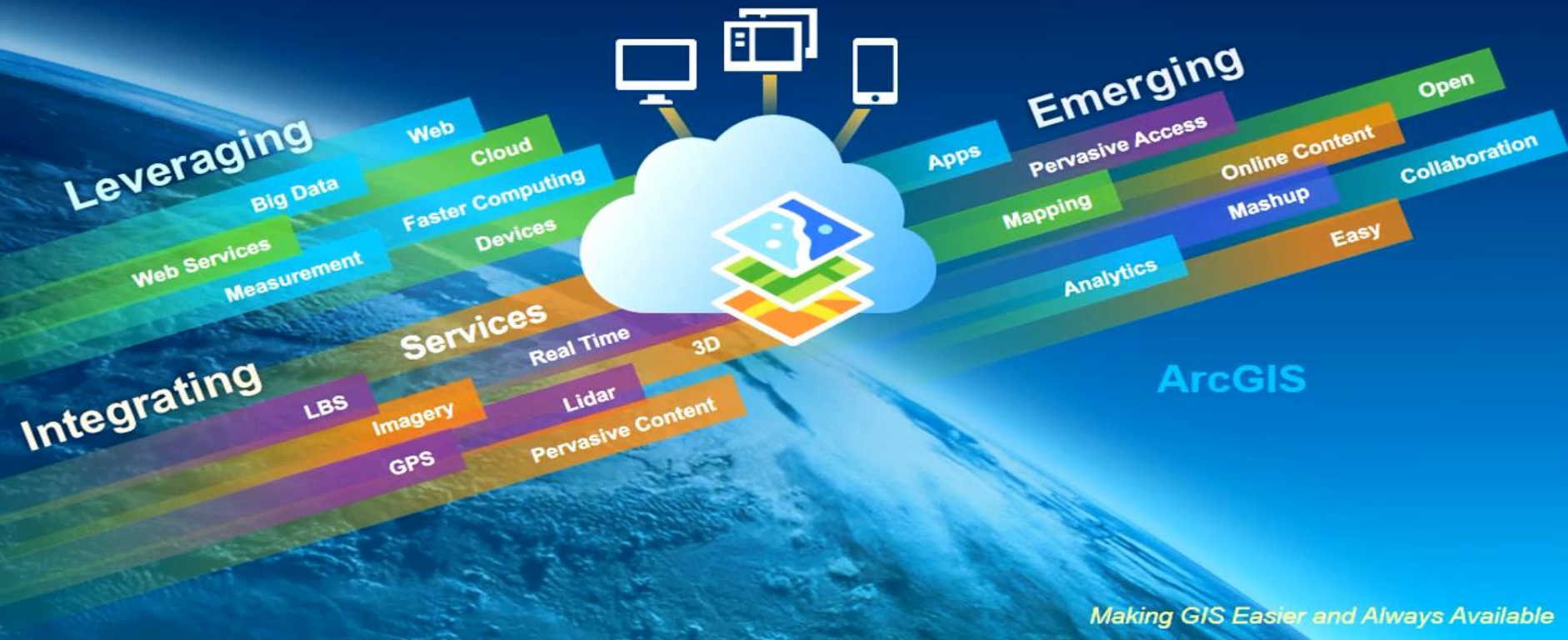
(Connect Space and Time)

Why **osi**soft® + **esri**® ?

Context	Need	Solution
<p>OSIsoft is the global leader in real-time data and event infrastructure</p> <p>Esri is the global leader in Geographic Information Systems (GIS)</p>	<p>Link operational data to geographical and location data</p>	<p>Visualize real-time PI System information within Esri ArcGIS maps and PI Coresight</p>

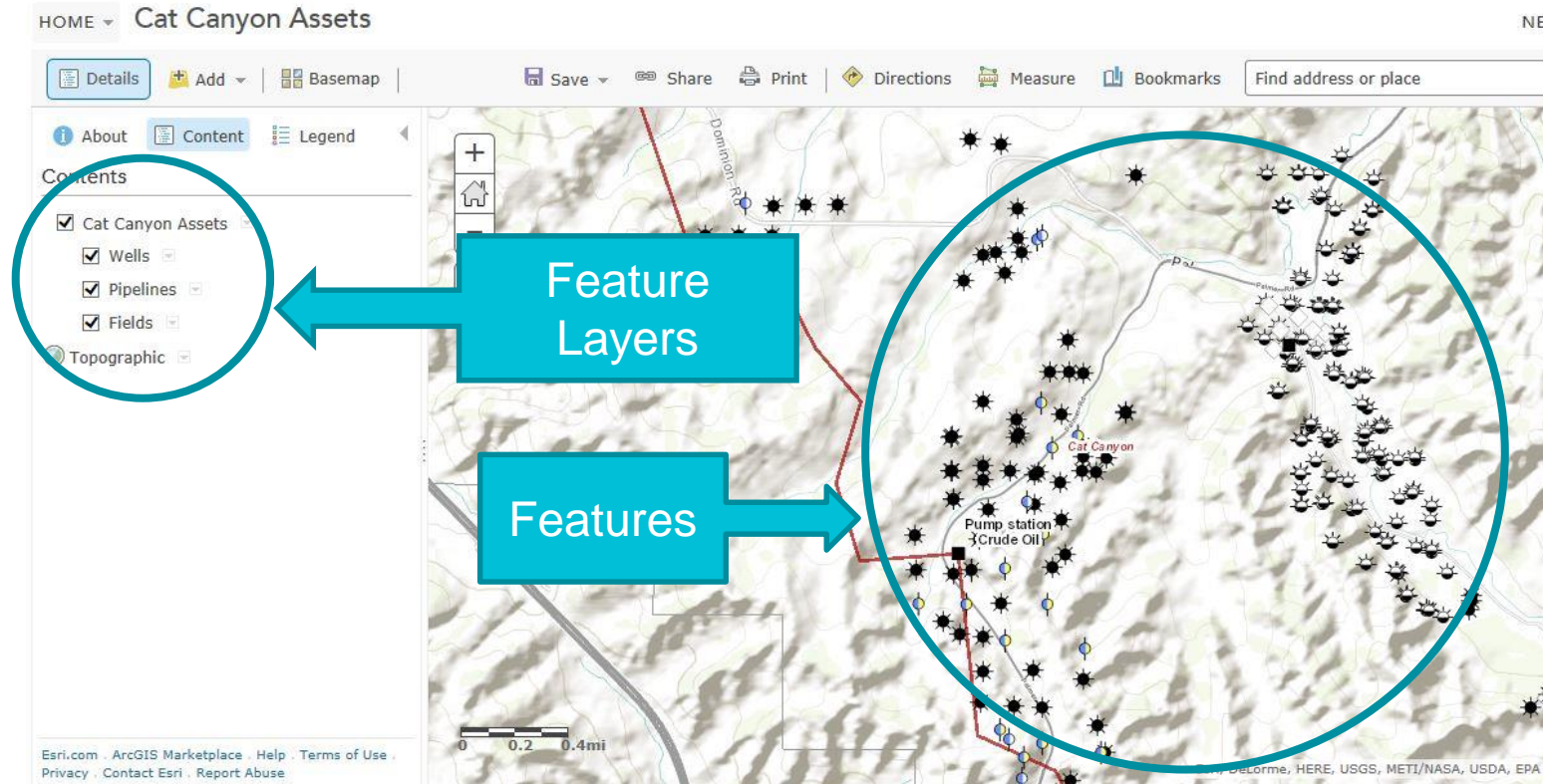
Put Yourself on the Map: The Fusion of the PI System and Esri ArcGIS

GIS Is Being Transformed Into a Web GIS Platform

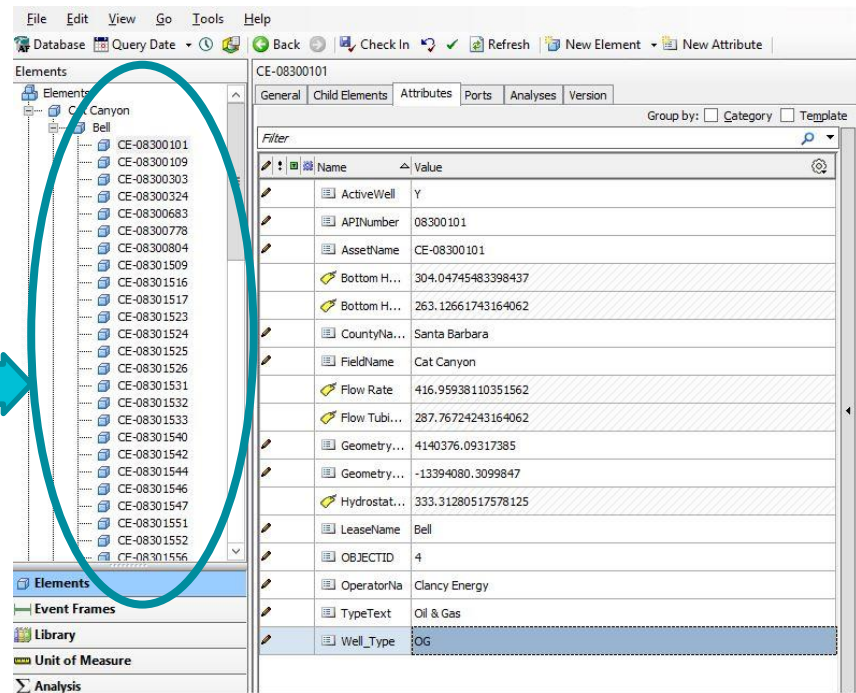
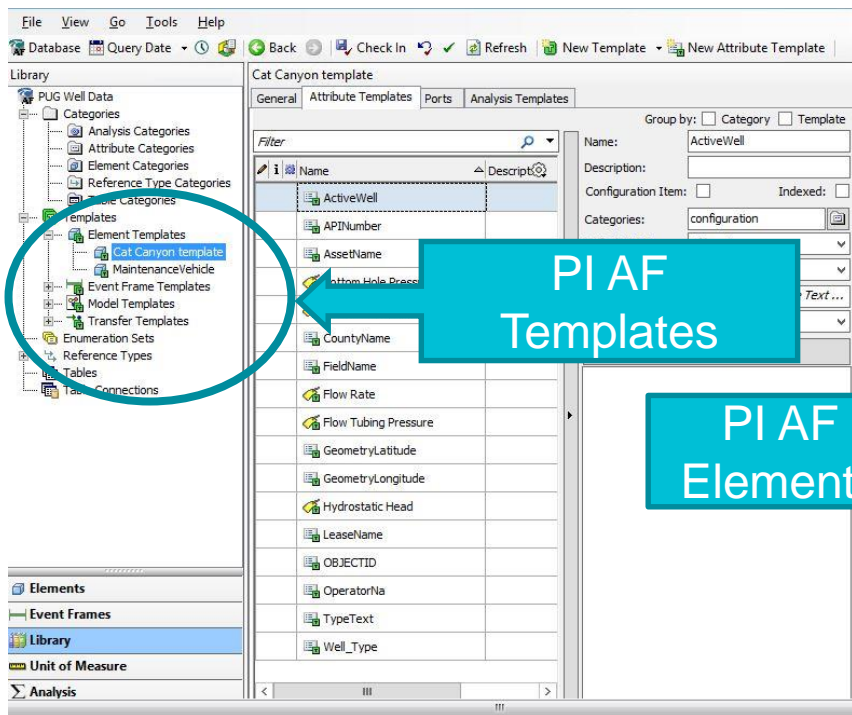


Making GIS Easier and Always Available

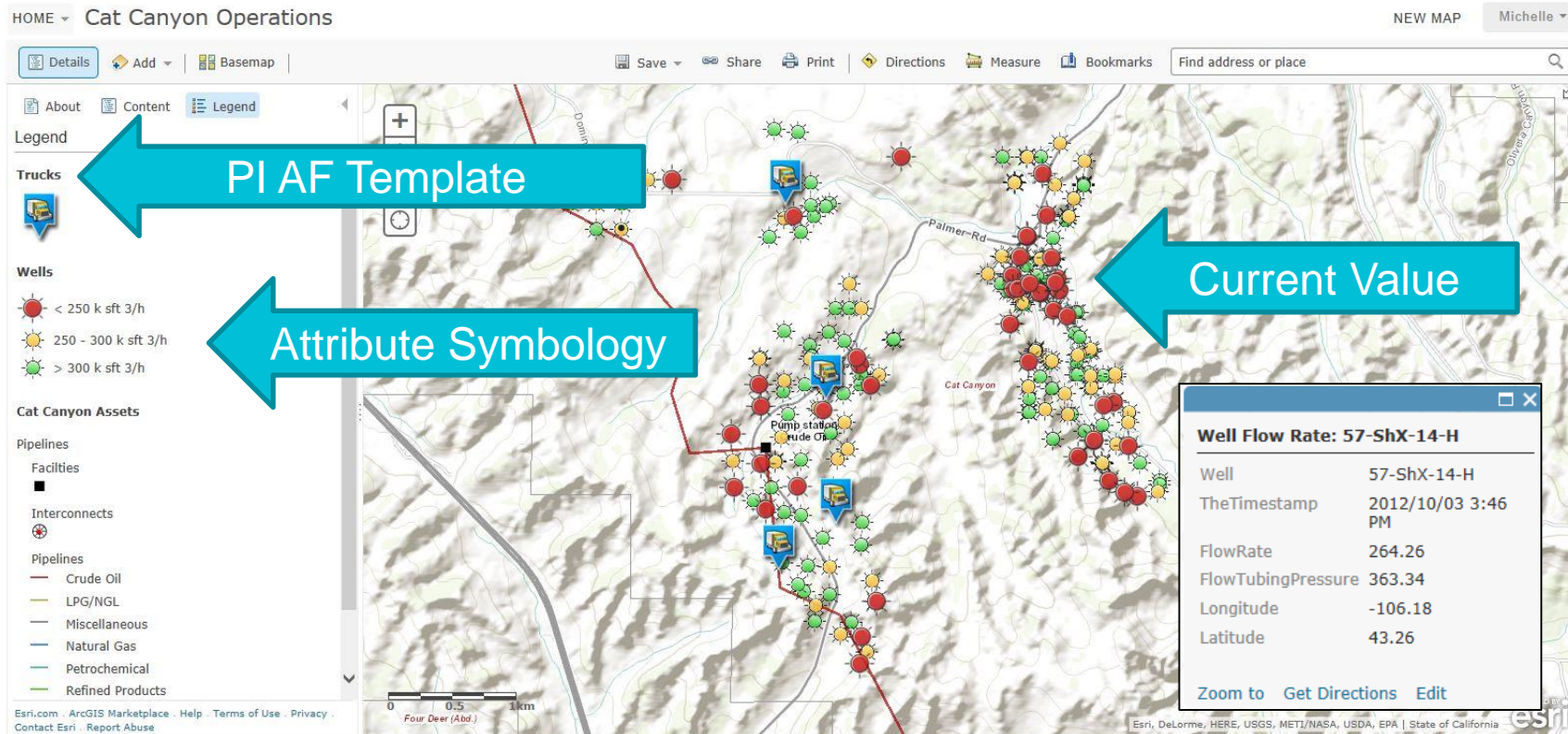
What is on an Esri Map?



What Data is in the PI System?



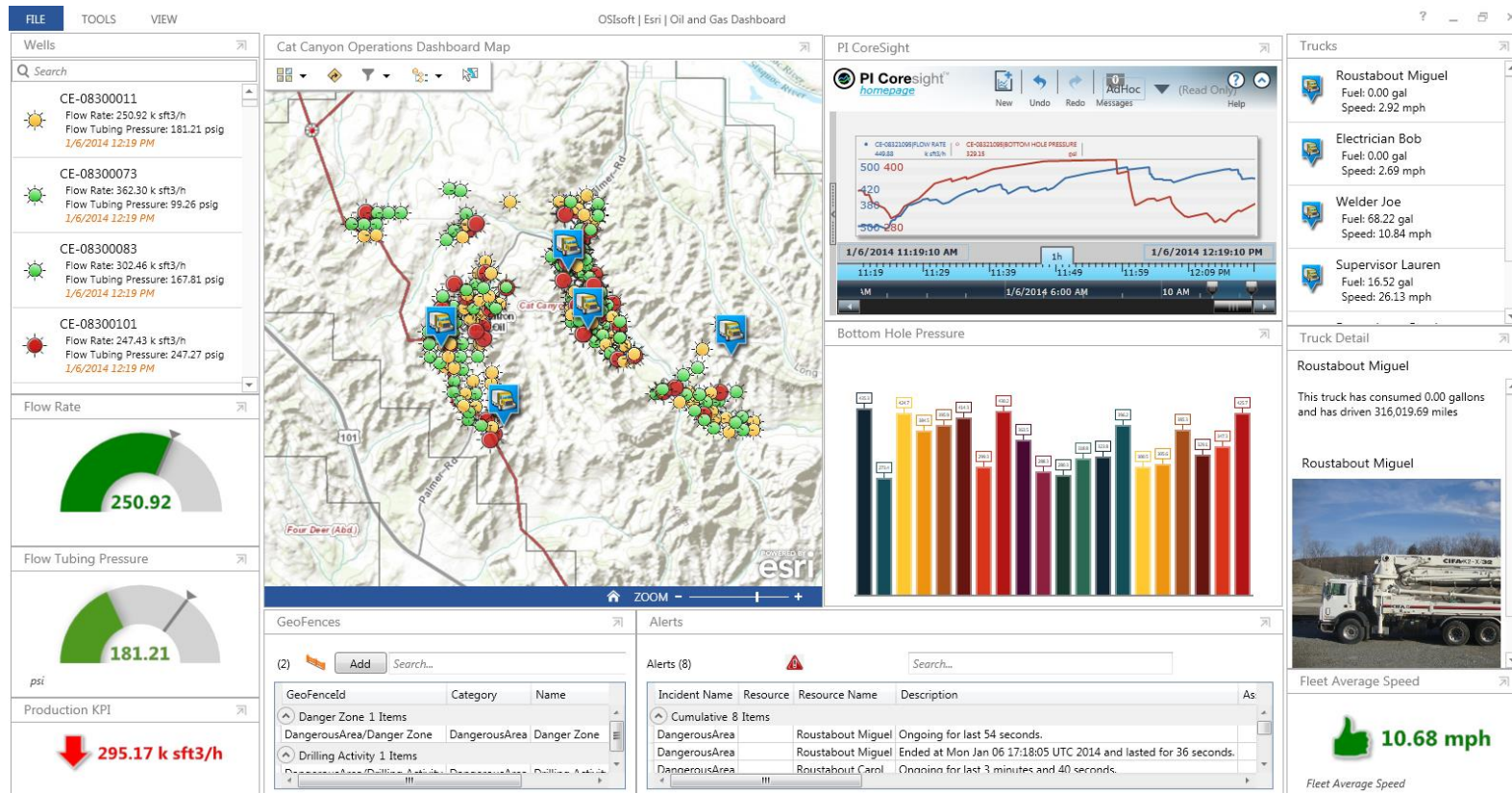
PI System Data Animates the Map



The PI System Enhances ArcGIS

- Change **color, size or icon** based on value
- Live PI AF **Attribute values** in ArcGIS Pop-ups
- **Track locations** of movable assets in real time
- Launch **PI Coresight** in context
 - Ad hoc trending
 - PI ProcessBook display viewing

Esri Operations Dashboard



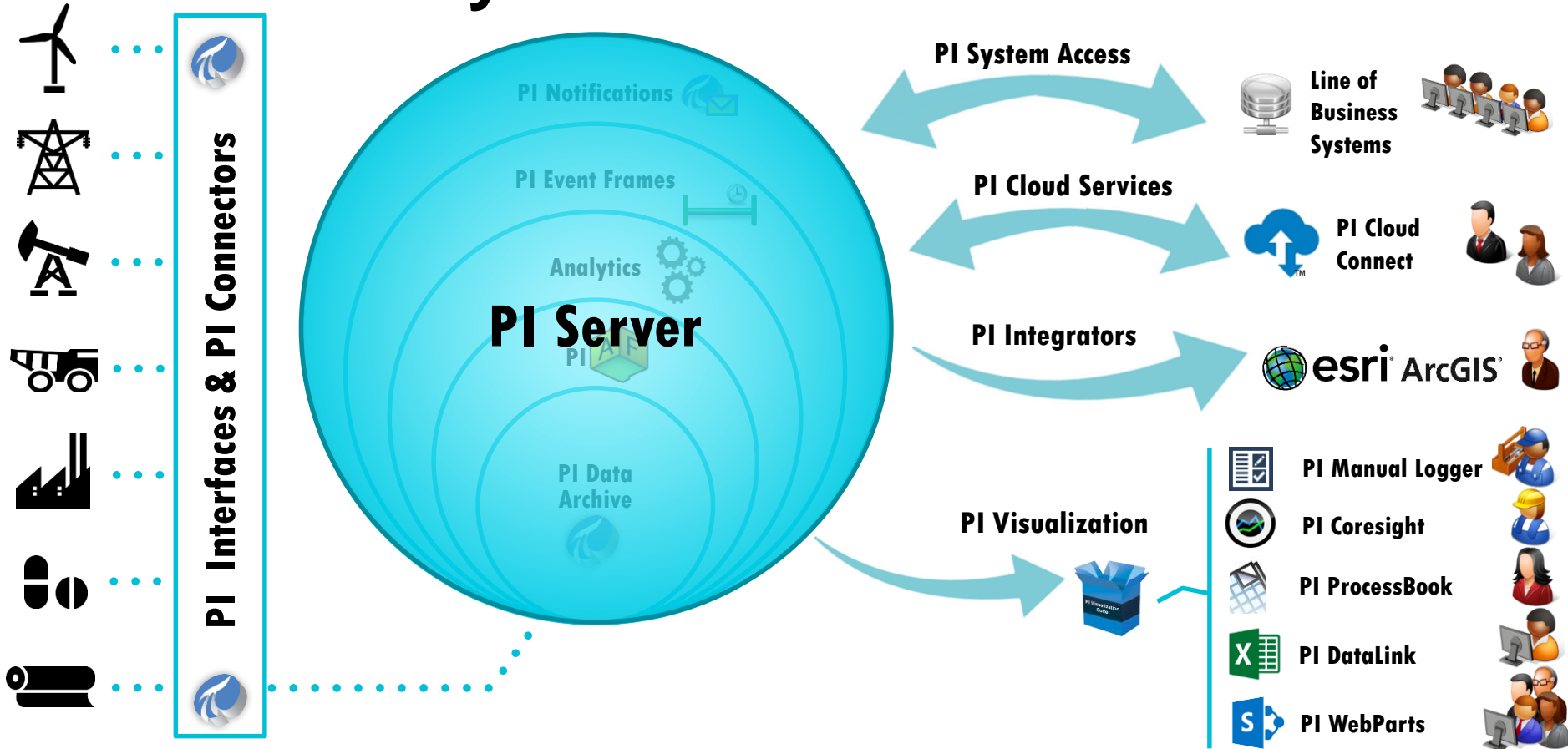
Connecting PI System Data to Esri ArcGIS



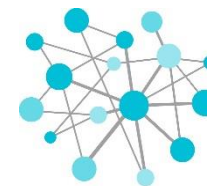
Benefits of the PI Integrator for Esri ArcGIS

- Real-time **PI AF Data** can update new or existing **Esri Feature Layers**
 - Configuration of Esri software is done automatically (no custom Esri objects are created)
 - PI AF databases can be jump-started using Esri Feature Layers
- **Visualize** the operational data using standard Esri clients
- Natively integrate **PI Coresight** with Esri clients

PI System Infrastructure



Key Points to Take Home

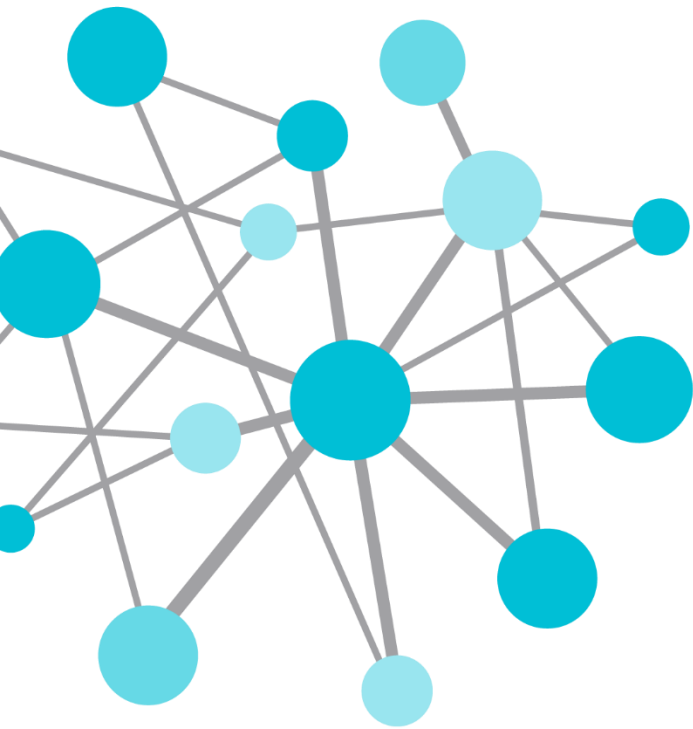


OSIsoft.
**REGIONAL
SEMINAR** 2014
The **Power** of **Data**
DECISION READY IN REAL-TIME

- The modern PI System contains **many new technologies**
 - PI Connectors
 - PI Integrators
 - PI Web API
- These all ultimately **facilitate access to all of your operational data and to analyses** made upon it, at any time any where

Bring us your questions about how you can get started with these technologies



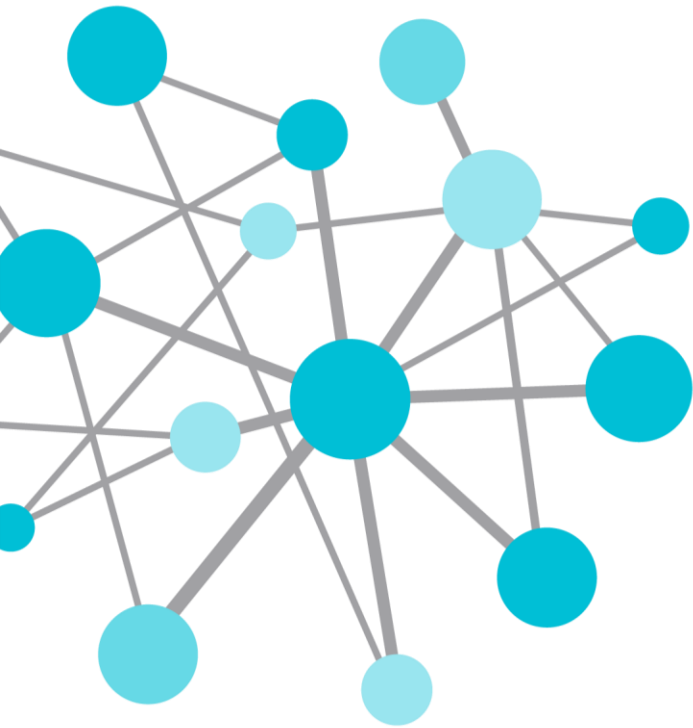


Questions

**Please wait for the
microphone** before
asking your question



**Please state your name
and your company**



THANK
YOU

Brought to you by  **OSI**soft.

Max McKay

Senior Field Service Engineer

mmckay@osisoft.com

OSIsoft, ULC