

OSIsoft®

# REGIONAL SEMINAR

The **Power** of **Data**

**THRIVING  
IN A  
WORLD OF  
CHANGE**



# Gaining and Sharing Insights Across the Enterprise from Anywhere

Presented by **Martin Bryant**, Staff Field Service Engineer



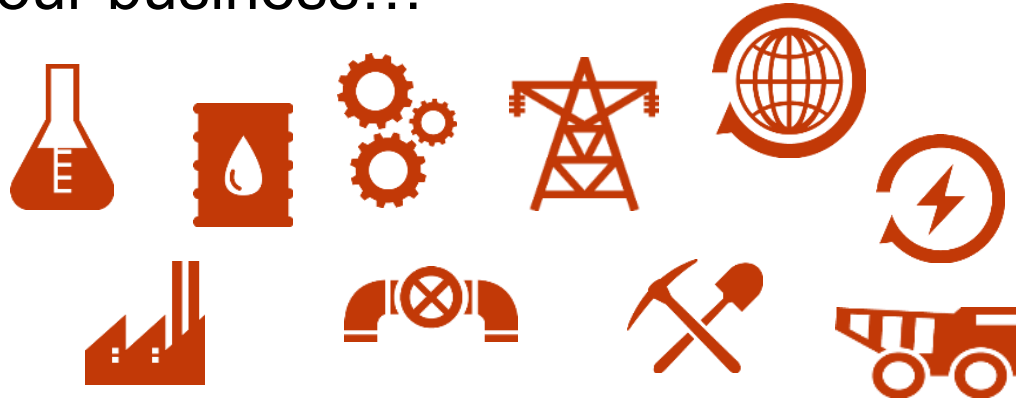
## Data-driven Decisions

A recent **study at MIT** showed that organizations **relying on data** to make decisions **performed** at rates 4-6 % **higher** than their peers.\*

*\*Erik Brynjolfsson,  
MIT Professor*

# Sharing Insights Across the Enterprise

Operational **insights** are discovered frequently throughout your business...



...but is everyone able to **share** their discoveries **quickly**, **easily** and **effectively**?



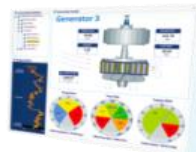


# Any Data, Anytime, Anywhere

## PI Visualization Suite

- Gives **every tool** at your fingertips
- To **fit your needs**
- And facilitate **enterprise-wide collaboration**

**PI ActiveView**



**PI BatchView**



**PI Coresight**



**PI WebParts**



**PI ProcessBook**



**PI Manual Logger**



**PI Visualization Suite**



**PI DataLink**

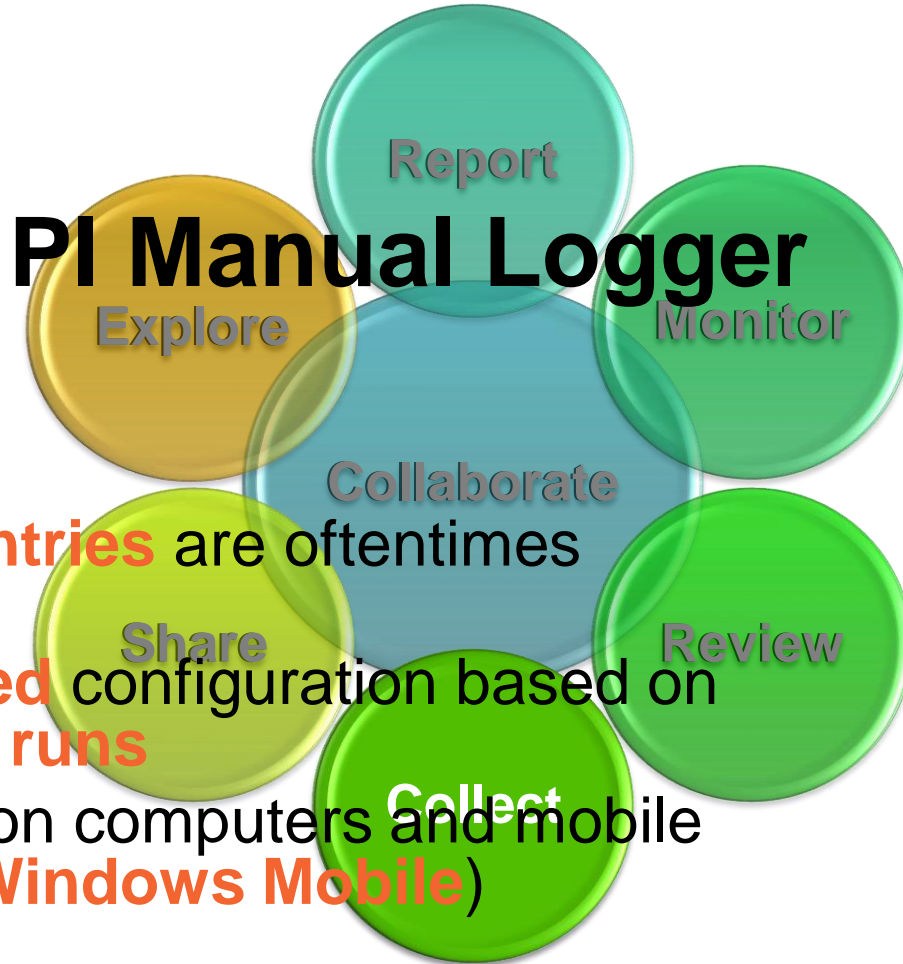


# The PI System Client Tools

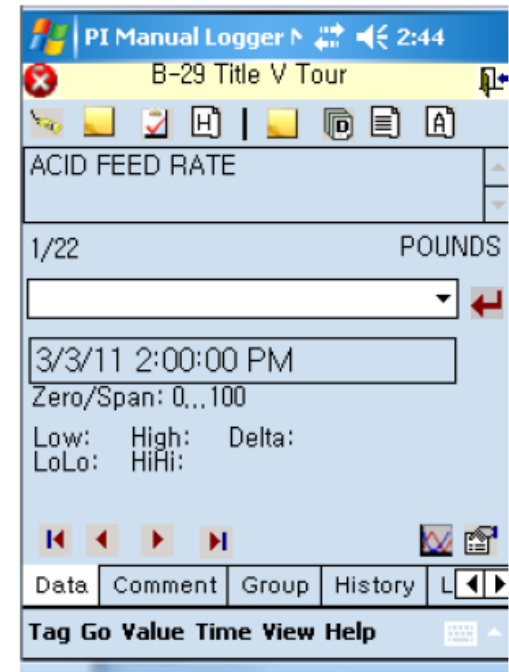
- **PI Coresight** for ad hoc analysis and collaboration with mobility
- **PI ProcessBook** for display building and monitoring
- **PI DataLink** for analysis and reporting
- **PI WebParts** for enterprise-wide collaboration
- **PI Manual Logger** for manual data collection



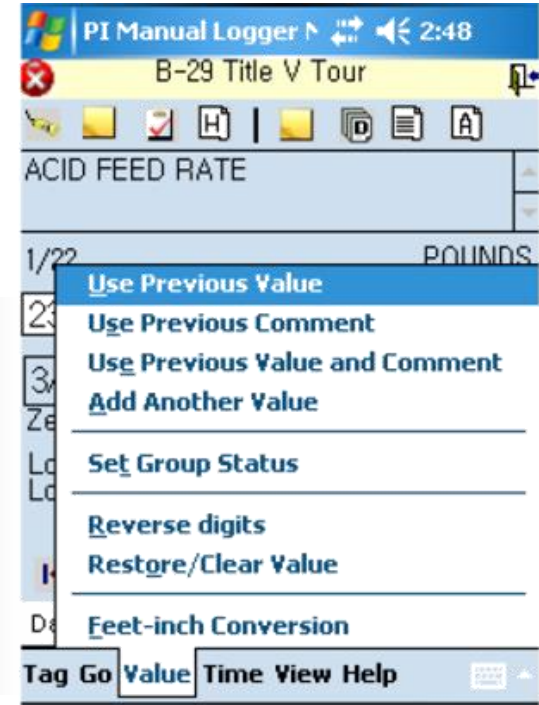
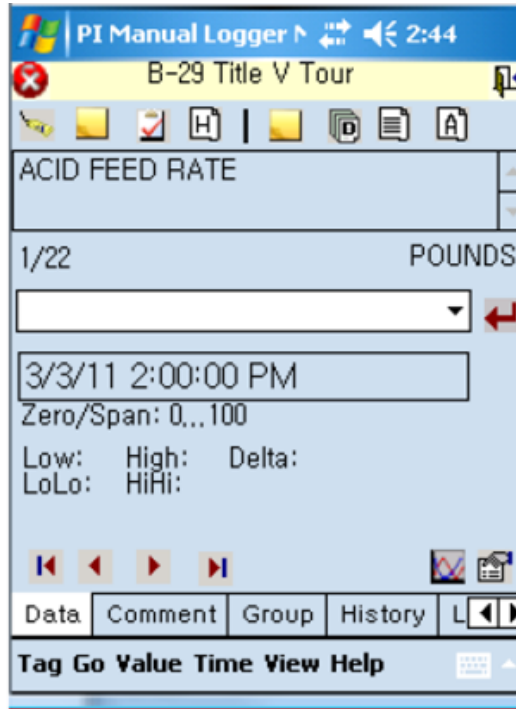
# PI Manual Logger



- **Manual entries** are oftentimes crucial
- **Centralized** configuration based on **tours** and **runs**
- Available on computers and mobile devices (**Windows Mobile**)



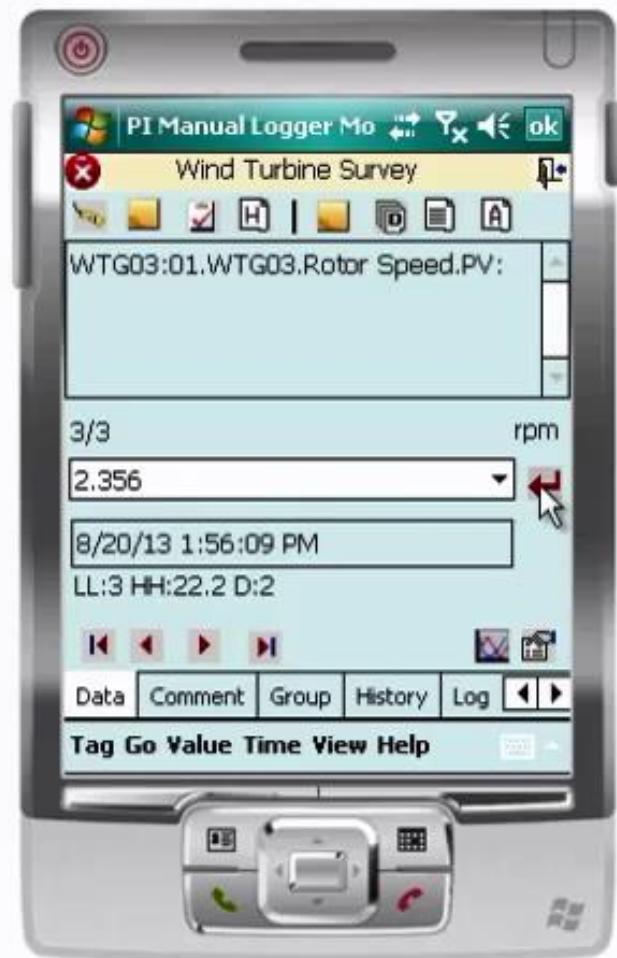
# Case Study – Eastman Chemical





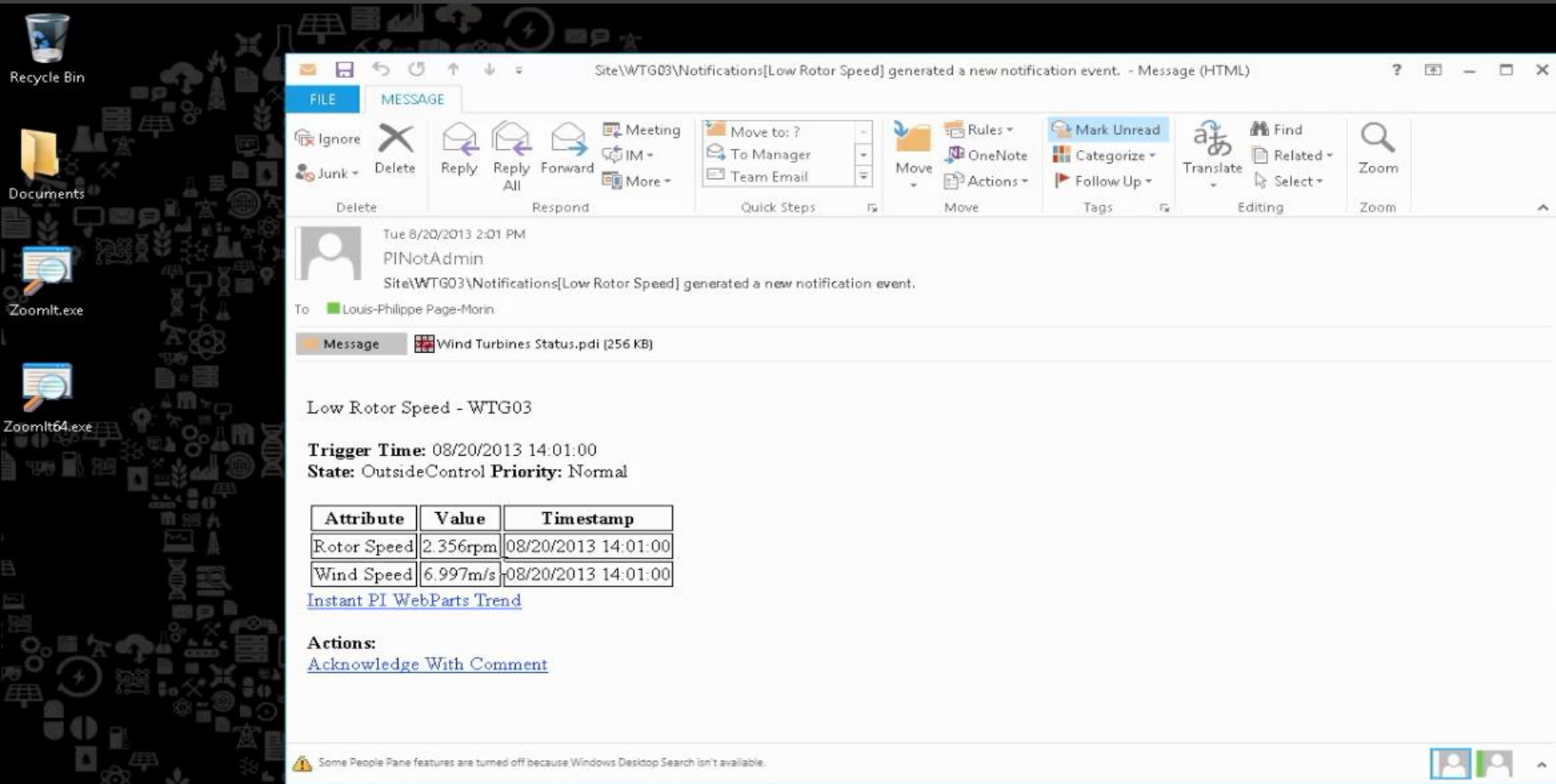


# DEMO





# PI Notifications and Visualization Tools



The screenshot shows a Windows desktop environment. The background is a dark grey surface covered with numerous small, light grey icons representing various fields of study like science, technology, and nature. On the left side, there are larger icons for 'Recycle Bin', 'Documents', and two instances of 'ZoomIt.exe'. A Microsoft Outlook window is open in the center, displaying an HTML message. The window title is 'Site\WTG03\Notifications[Low Rotor Speed] generated a new notification event. - Message (HTML)'. The message is from 'PINotAdmin' to 'Louis-Philippe Page-Morin' and contains a PDF attachment named 'Wind Turbines Status.pdf (256 KB)'. The message body includes the text 'Low Rotor Speed - WTG03' and a timestamp of '08/20/2013 14:01:00'. It also features a table with sensor data and a link to a 'WebParts Trend'.

Site\WTG03\Notifications[Low Rotor Speed] generated a new notification event. - Message (HTML)

FILE MESSAGE

Ignore Delete Reply Reply All Forward IM Meeting Move to: ? To Manager Team Email Quick Steps Move Rules OneNote Actions Mark Unread Categorize Follow Up Tags Editing Find Related Select Zoom

Tue 8/20/2013 2:01 PM  
PINotAdmin  
Site\WTG03\Notifications[Low Rotor Speed] generated a new notification event.

To: Louis-Philippe Page-Morin

Message Wind Turbines Status.pdf (256 KB)

Low Rotor Speed - WTG03

Trigger Time: 08/20/2013 14:01:00  
State: OutsideControl Priority: Normal

Attribute	Value	Timestamp
Rotor Speed	2.356rpm	08/20/2013 14:01:00
Wind Speed	6.997m/s	08/20/2013 14:01:00

[Instant PI WebParts Trend](#)

Actions:  
[Acknowledge With Comment](#)

Some People Pane features are turned off because Windows Desktop Search isn't available.



# DEMO

# PI WebParts

Explore

Report

Monitor

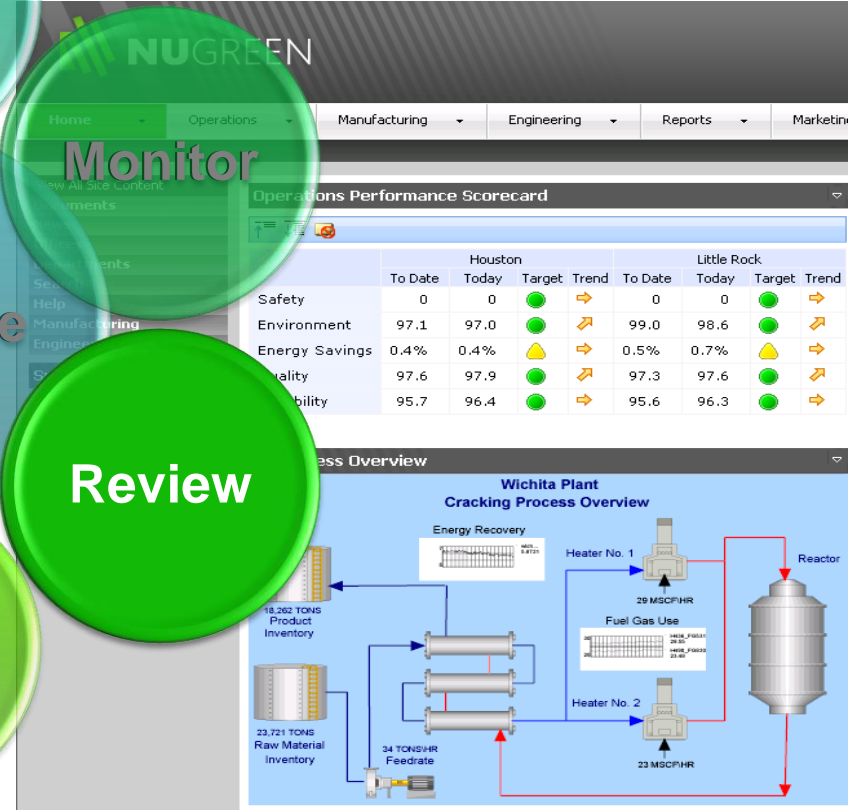
Collaborate

Share

Review

Collect

- Interactive web parts for **Microsoft SharePoint**
- Allow **real-time** visualization of operational data
- **Share** displays and reports to a wider audience





Sandbox

EDIT LINKS

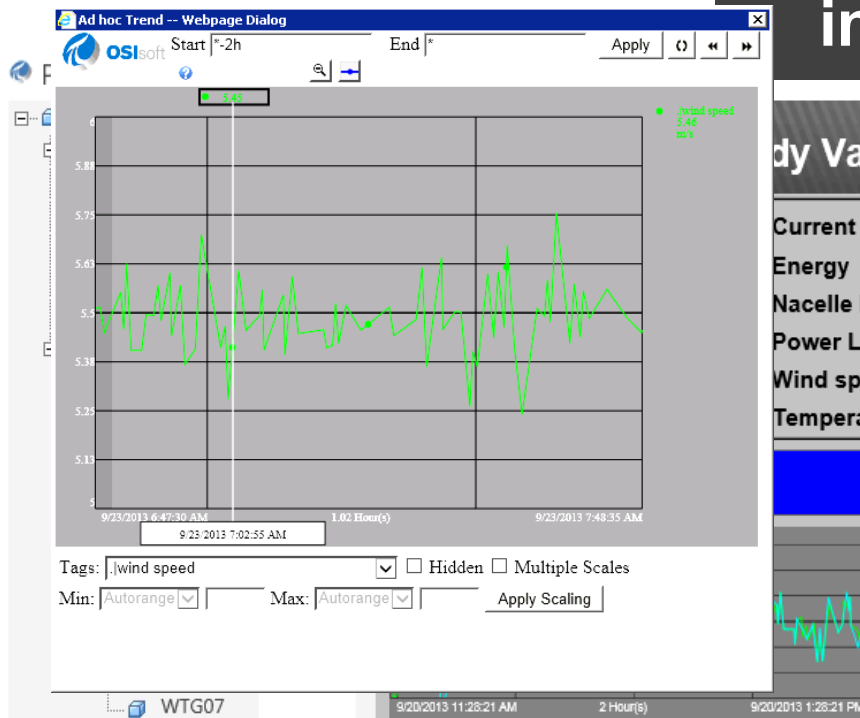
## NuGreen Energy

Home

Documents

Site Contents

EDIT LINKS

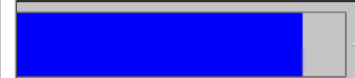


# PI ProcessBook Displays in Microsoft SharePoint

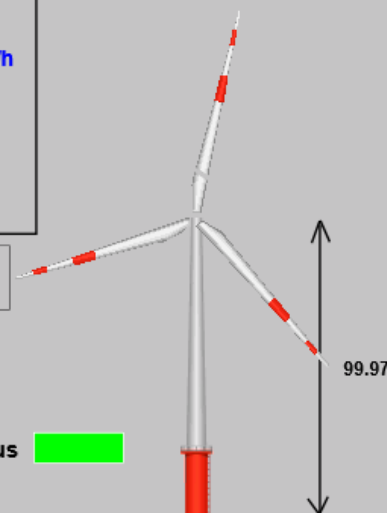
dy Valley WTG01

PI Coresight Display

Current L1 358.05 kA  
Energy 903.44 kWh  
Nacelle Position 358.75 °  
Power Load 59.62  
Wind speed 5.40 m/s  
Temperature 14.86 °C



Status



99.97



Sandbox

EDIT LINKS

NuGreen Energy

# PI DataLink Reports in Microsoft SharePoint

Home

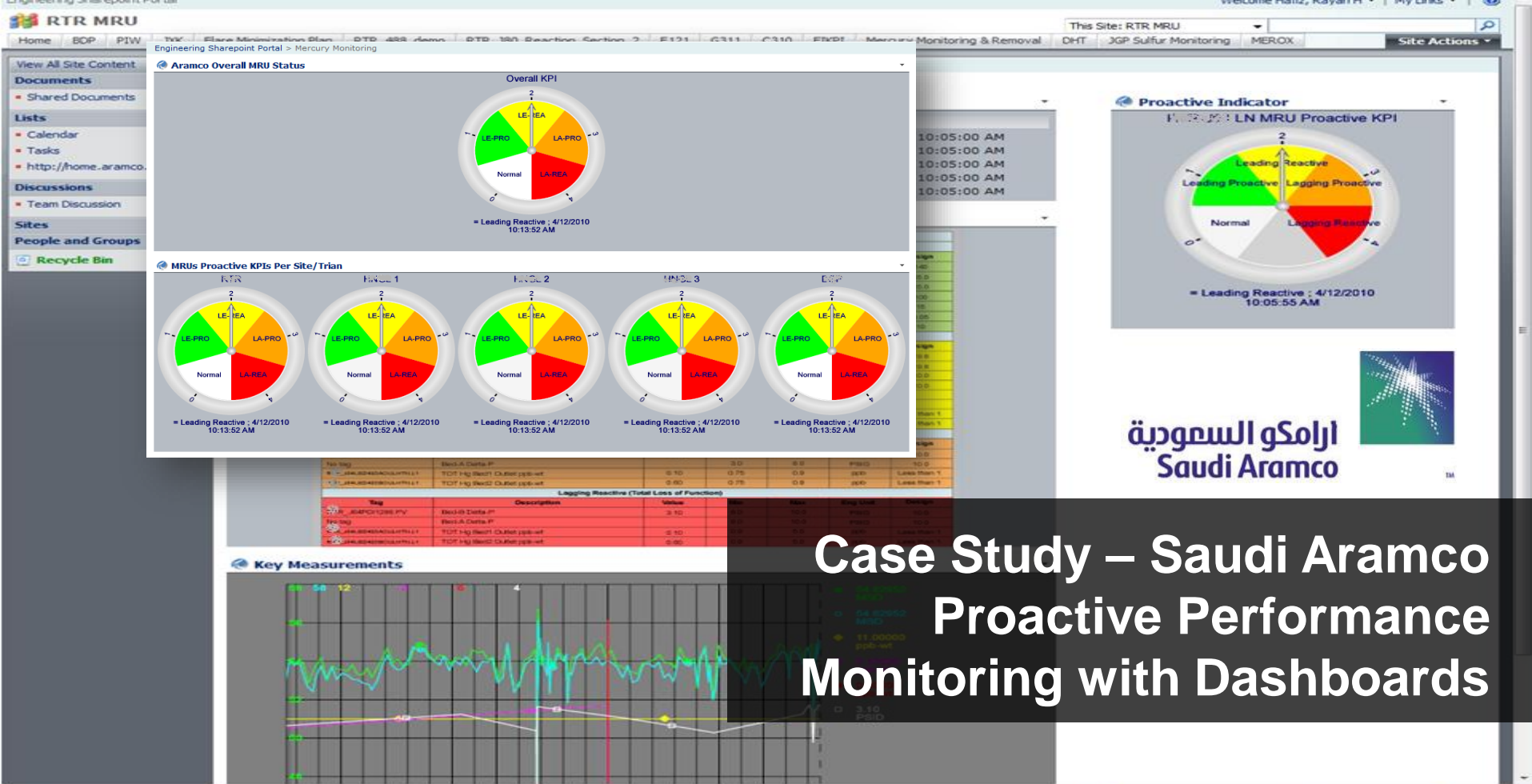
Documents

Site Contents

EDIT LINKS

Excel Web Access - Wind Turbines Daily Report\_RS2013\_DLES

FILE	OPEN IN EXCEL	DATA	FIND						
1									
2									
3									
4									
5									
6									
8									
9									
10									
11									
12									
13									
14									
15									
16									
17									



# Case Study – Saudi Aramco Proactive Performance Monitoring with Dashboards



# PI ProcessBook

Explore

Report

Monitor

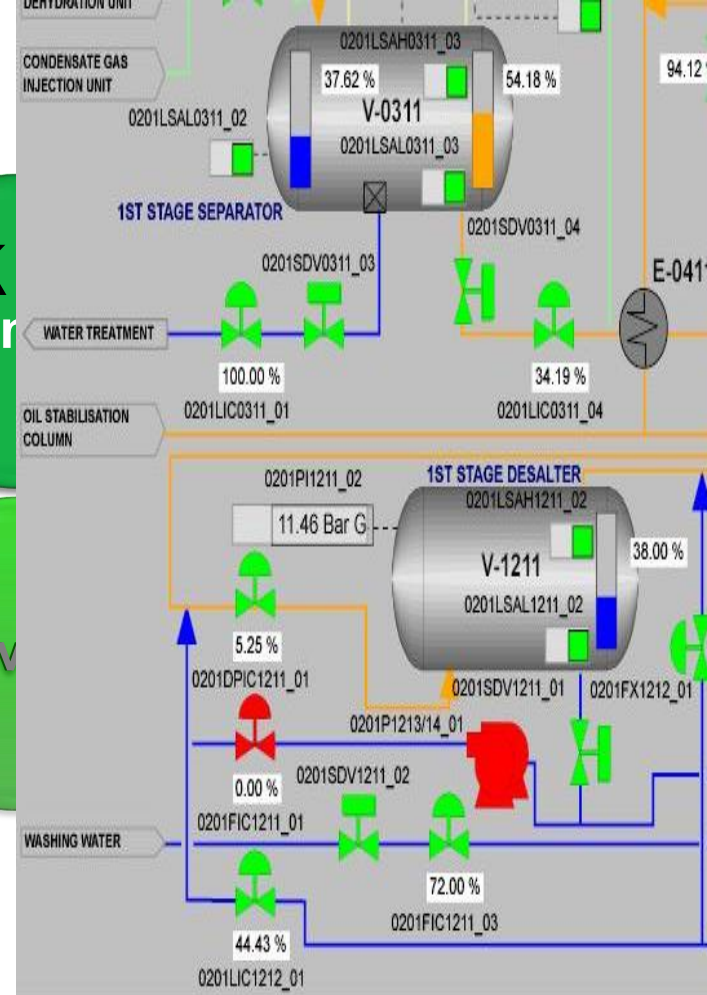
Collaborate

Share

Review

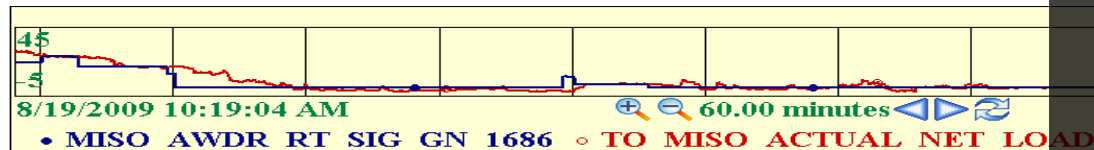
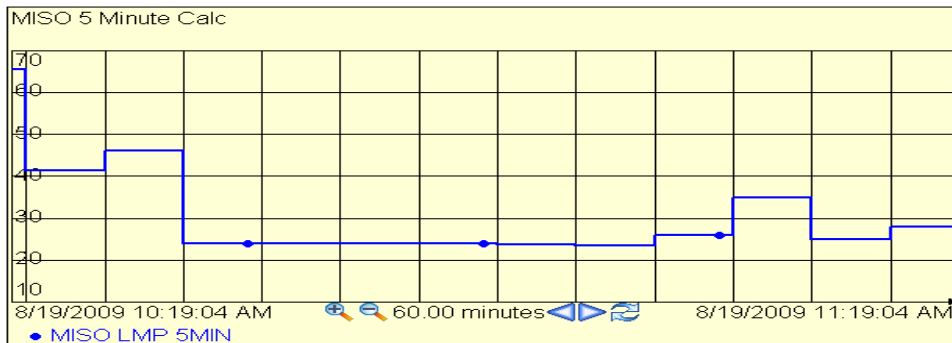
Collect

- Display of **real-time and historical data**
  - Process representation
  - **Trend** with traces
  - Context management with PIAF
- Allow for **process monitoring** and review of problematic events



# Demand Response Overview

	Real Energy	Regulation	Spin Reserve
Cleared	19	18	00
Deployed	19	00	00



TOTAL POT LINE LOAD: **455.39 MW**

OCB 1500	<div style="width: 91.3%;"></div>	91.3
OCB 1502	<div style="width: 90.8%;"></div>	90.8
OCB 1503	<div style="width: 92.8%;"></div>	92.8
OCB 1504	<div style="width: 90.4%;"></div>	90.4
GCS 3805	<div style="width: 0%;"></div>	00.0
GCS 3806	<div style="width: 90.0%;"></div>	90.0
GCS 3800	<div style="width: 0%;"></div>	00.0

Current Average Price **28.50 dollars**  
 5-MIN LMP Price **28.05 dollars**  
 Last Hour LMP Price **31.75 dollars**

**Case Study – Alcoa  
 Demand/Response and  
 Adaptation**

Homepage

Energy Flow

WPP Switchyard

Generation Trends

Warrick Overview

Pot Line Trends

Dispatch Status

# PI DataLink

Explore

Report

Collaborate

- Allows **summary calculations** and **filtering** of the data
- Enhances PI System Data with access to **Microsoft Excel reporting** features

	A	B	C	D
1	Début	5/27/2010 13:40		
2	Fin	5/28/2010 13:40		
3				
4	Date	BA:CONC.1	BA:LEVEL.1	BA:TEMP.1
5	27-May-10 13:51:28	43.80355835	0.69	5.41
6	27-May-10 13:51:58	0	0.00	0.00
7	27-May-10 14:07:28	5.801473618	12.40	10.64
8	27-May-10 14:19:58	18.39671898	21.03	20.03
9	27-May-10 14:45:58	25.30208397	39.79	45.05
10	27-May-10 14:55:28	40.00126648	33.46	28.58
11	27-May-10 15:12:28	42.83501053	0.65	0.83
12	27-May-10 15:12:58	0	0.00	0.89
13	27-May-10 15:27:28	5.907530308	10.27	10.69
14	27-May-10 15:42:28	20.59512711	22.60	20.78
15	27-May-10 16:06:58	27.59270096	37.20	42.05
16	27-May-10 16:13:28	39.76164246	35.06	27.03
17	27-May-10 16:33:28	43.08703995	0.53	0.92
18	27-May-10 16:33:58	0	0.60	0.98
19	27-May-10 16:50:58	6.635637283	13.87	13.76
20	27-May-10 17:06:58	19.4419651	24.95	20.57
21	27-May-10 17:26:58	25.28212265	27.14	21.21



# PI DataLink 2013 & Microsoft Excel 2013

- **PI DataLink 2013**
  - **PI AF** support with the new **PI System Search** engine
- **Microsoft Excel 2013**
  - Business Intelligence (BI) tools are integrated
  - Microsoft **PowerPivot**
  - Microsoft **Power View**

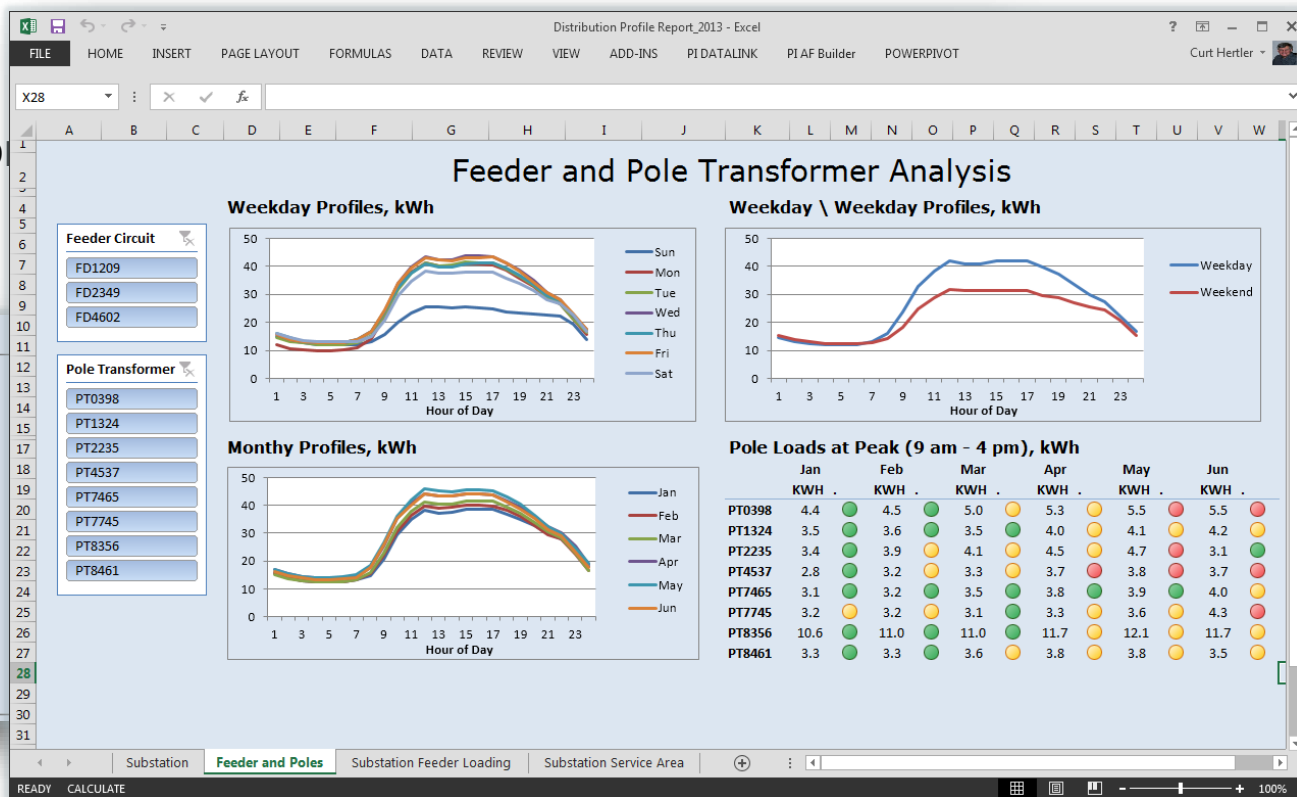
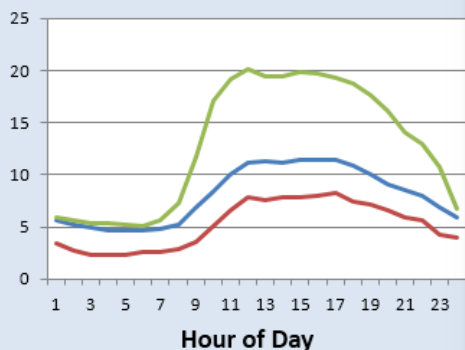


# Demand Profiling and Grid Analysis



Substation

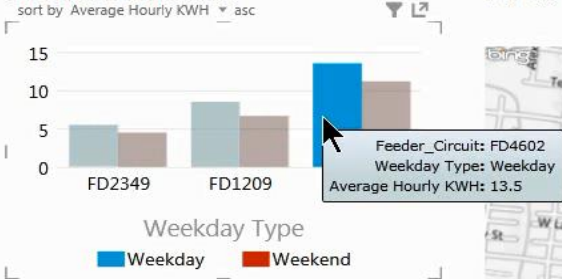
Feeder Distribution, kWh



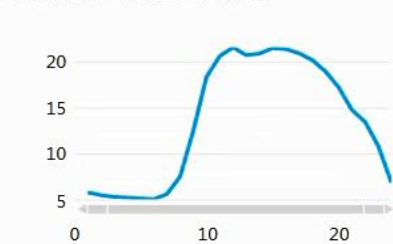


# Bighorn Basin Substation Service Area

## Circuit Drilldown



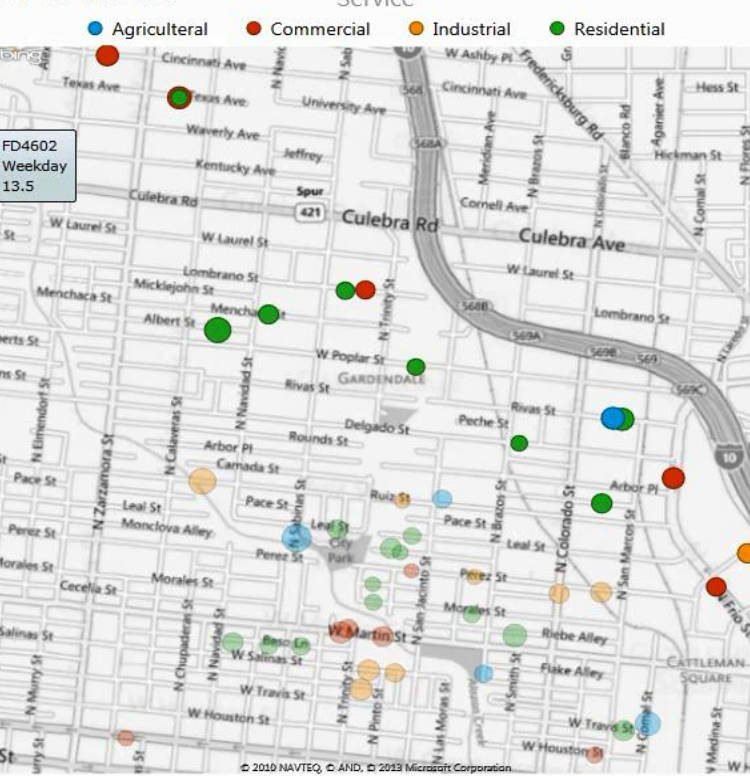
## Distribution Profile



## Service Profile



## Area Meters



# PI Coresight

## Explore

- **Modern** Web based visualization tool
- Facilitates **ad hoc analysis**
- **Instantaneous learning**
- Software with a **fast release cycle** to fit your needs
- **No client-side installation**

Report

Collaborate

Share

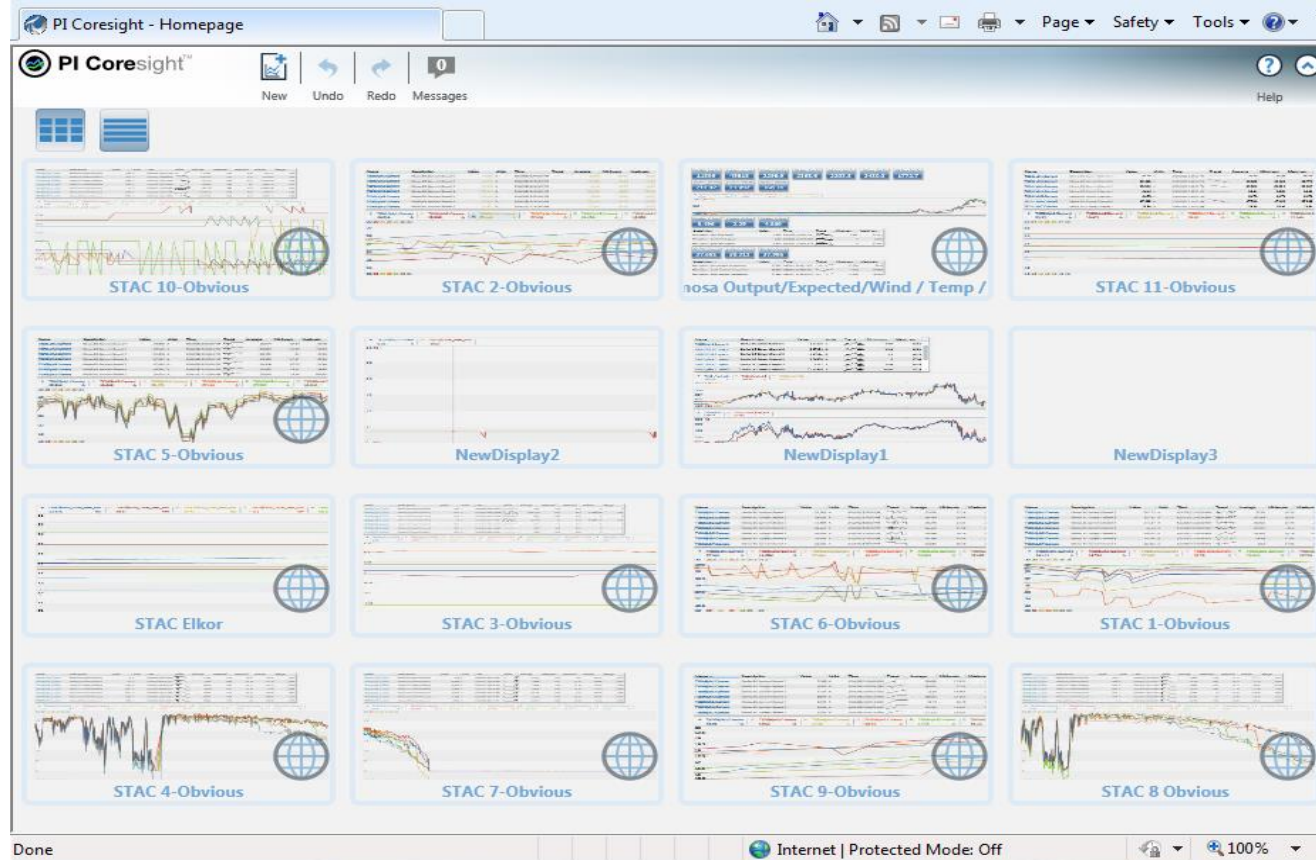
Collect



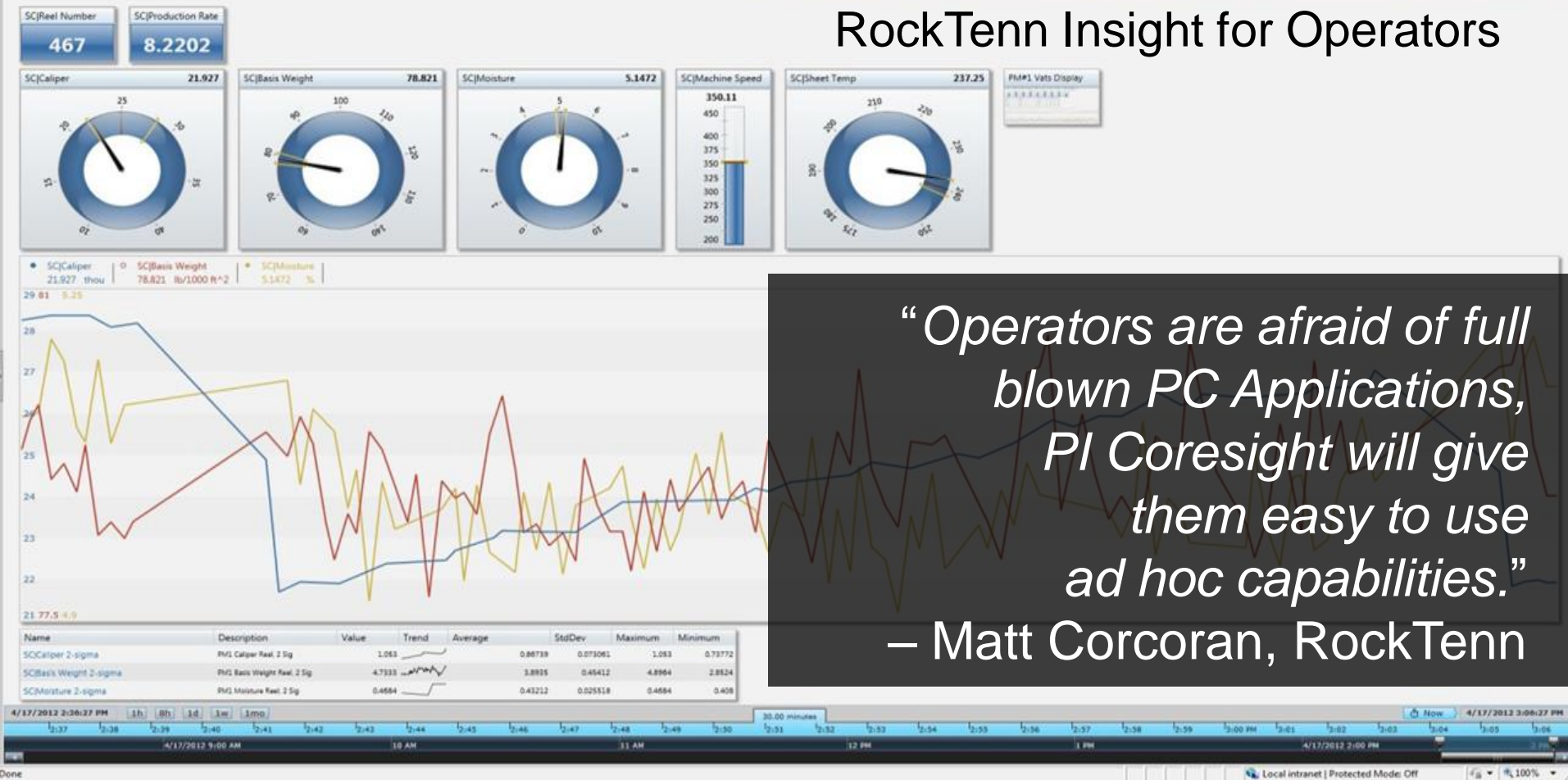
# Benefits of PI Coresight at AMONIX™

POWERING THE FUTURE NOW™

- **Minimal learning curve**
- **Rapid trend analysis**
- **Leveraging PI AF structure and data**



# RockTenn Insight for Operators





# Visualization and Mobility



Your needs are evolving:

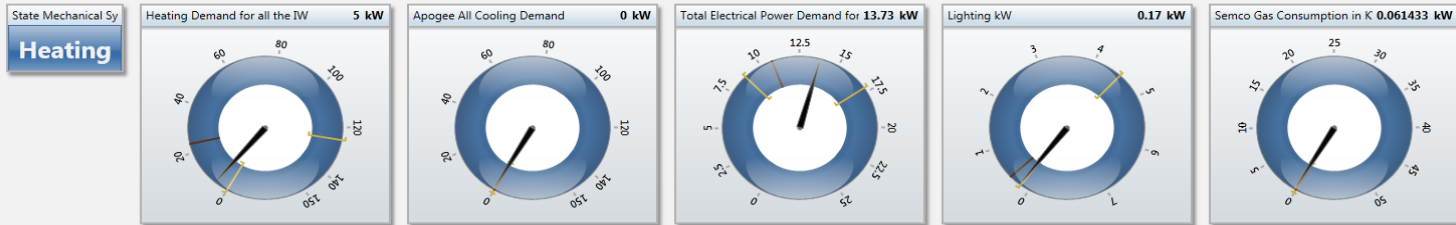
- **Remote** access
- Access at **any time**
- **Self-service** usage

# Mobility and the PI System

- Mobile **PI Coresight** application for the **iPad** and the **iPhone** now available!
  - Native application
  - Free download on the Apple App Store™
  - Test it now with **sample data**



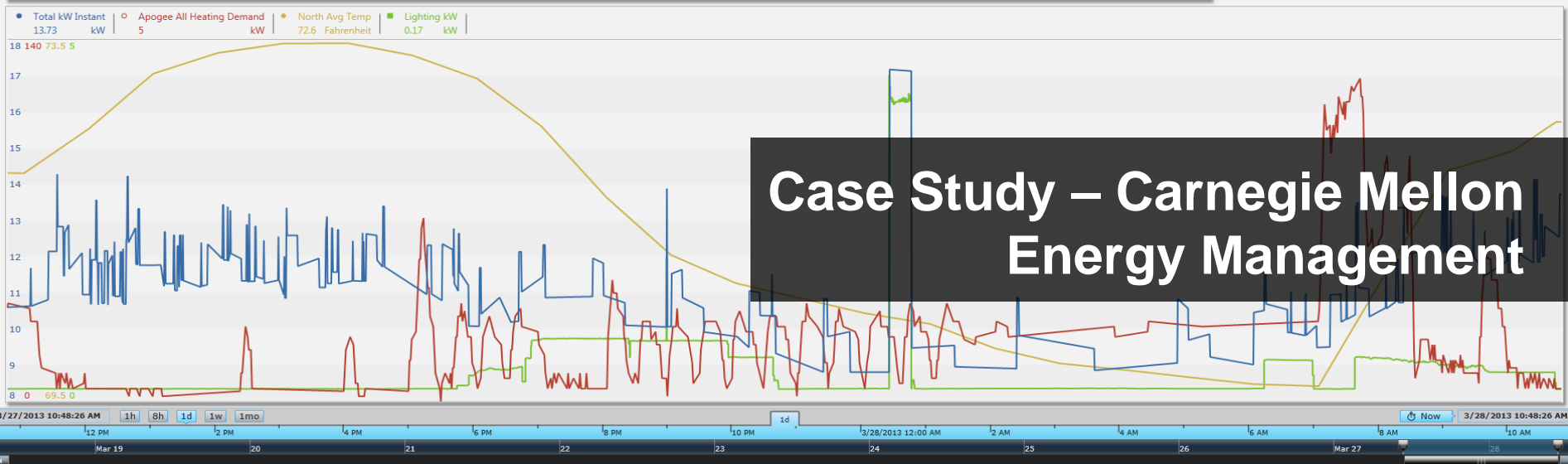




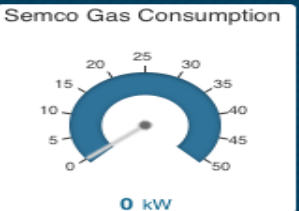
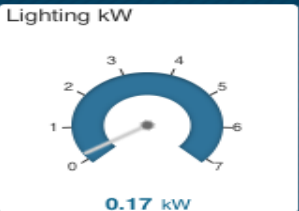
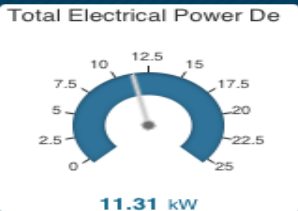
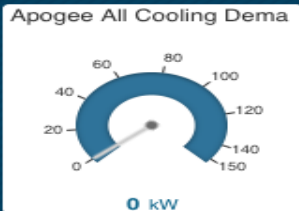
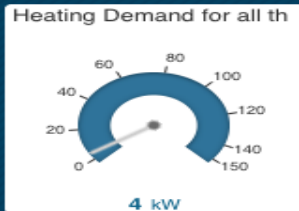
Name	Description	Value	Units	Trend	Average	Minimum	Maximum	StdDev	Range
Apogee All Heating Demand	Heating Demand for all the IW	5	kW		23.64	0	125	21.44	125
Total kW Instant	Total Electrical Power Demand for all IW	13.73	kW		10.77	8.812	17.18	1.402	8.365

Name	Description	Value	Units	Trend	Average	Minimum	Maximum	StdDev	Range
North Avg Temp	North Average Temperature	72.6	Fahrenheit		71.5	69.7	73.5	1.34	3.79
North IW/ North Avg Ill	North Average Illuminance	857.8	Lux		336.3	0	1,469	461.7	1,469

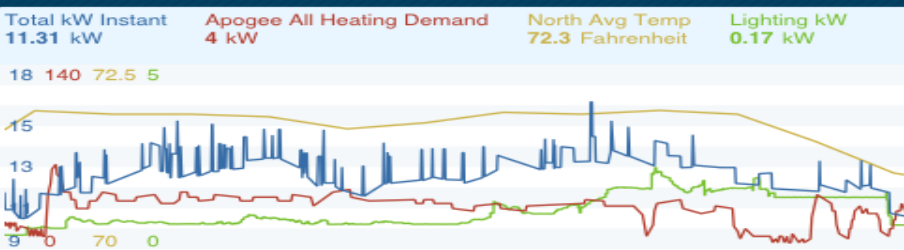


State Mechanical System  
**Heating**



Name ▲	Description	Value	Units	Trend	Average	Minimum	Maximum
Apogee All Heating Demand	Heating Demand for all the IW	4	kW		28.82	2	124
Total kW Instant	Total Electrical Power Demand for all IW	11.31	kW		11.38	9.497	17.95

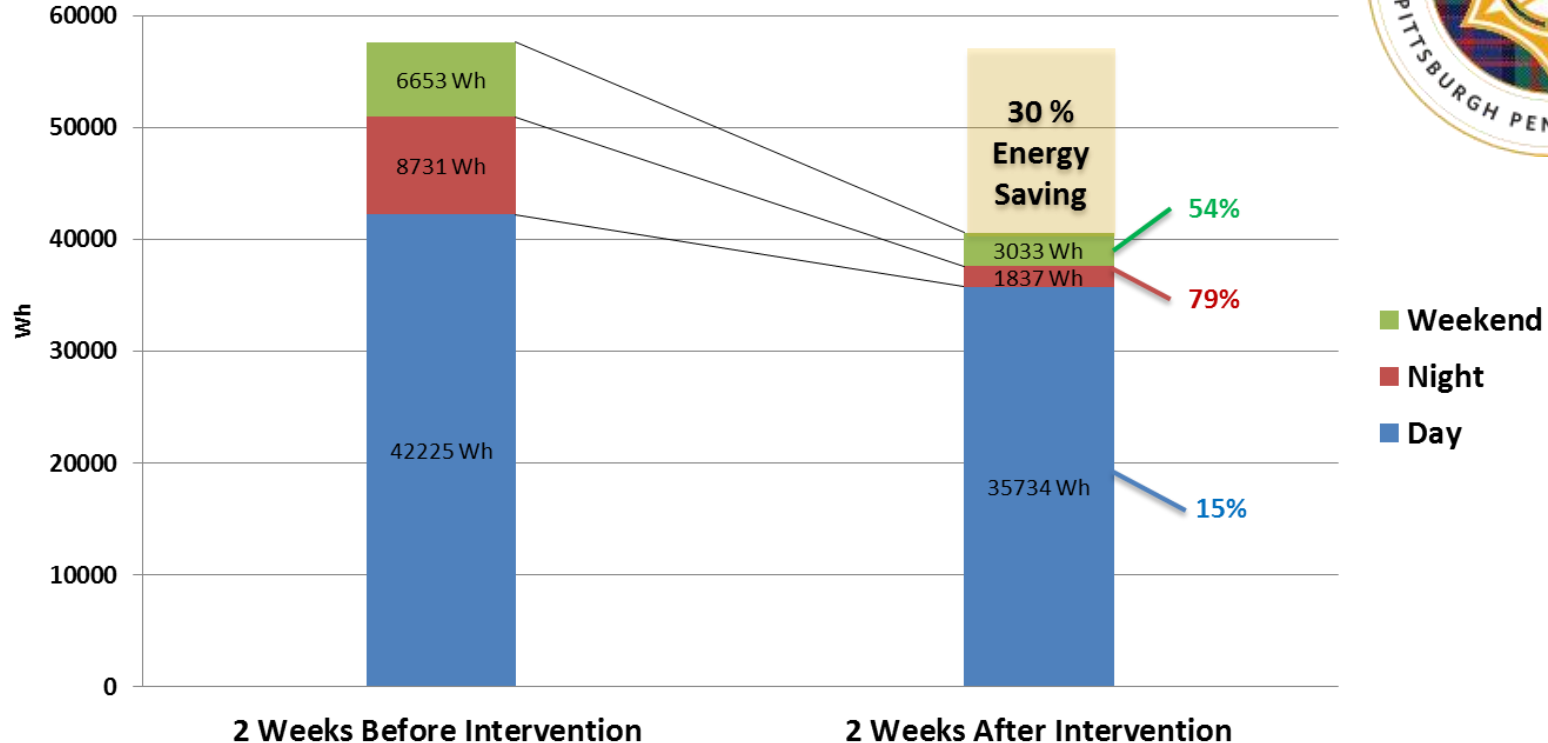
Description ▼	Value	Units	Trend	Average	Minimum	Maximum	StdDev
North Average Temperature	72.3	Fahrenheit		71.2	70.1	72.3	0.622
Daylight Level Apogee	1,418	Lux		12.36	1.500	226.57	



# Case Study – Carnegie Mellon Energy Management

# Case Study – Energy Management

## Energy Savings (CFA n=7)



# Support for iPad and iPhone



# Support the Devices you Use

How can you tell now what every team member  
will use...

tomorrow...

next week...

**especially** next year!



# Collect Data with Different Devices

PI Manual Logger

TOURS

Back

Apr 09 2013 - 12:34:14 pm  
1 / 8 tags

**Pump P250 Temp**  
South Reflux Pump 1 Pump1

**Instructions**  
Use the vibration probe to measure the Temperature for Pump P250.

**Value**  
190  
Limits violated: Hi(185)  
H:185 L:155  
Previous value: 184 - Apr 09 2013 - 12:34:14 pm  
> more values

**Timestamp**  
Apr 09 2013 - 12:34:14 pm

**Comment**

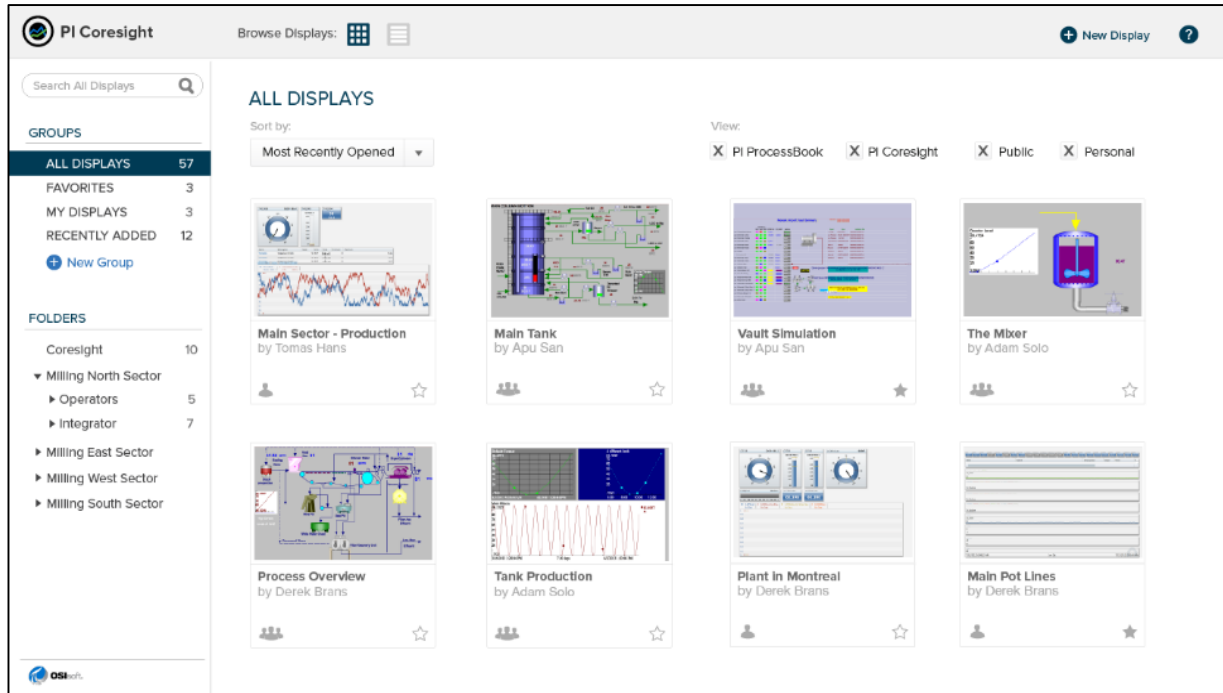
Next / Prev All Missing

- Browser interface is device agnostic
- Simplified screen
- Android phone & tablet
- iPhone and iPad
- Any modern browser (HTML5 support)





# View PI ProcessBook Content on Different Devices



- **Browse PI ProcessBook displays** the same way as PI Coresight
- Any modern browser (**HTML5** support)

# PI Visualization Suite Benefits

- Access to the data in the format you want **reduces the time to insight**
- Access to the data when and where you want **facilitates collaboration and sharing of insights**
- **All** visualization tools to **any** user gives **the right tool** for the job **at the right time**





# Questions

Please wait for  
the **microphone**  
before asking  
your questions



State your  
**name &  
company**





Operational Insights  
Enterprise Wide



# THANK

# YOU

Brought to you by





# Martin Bryant

[mbryant@osisoft.com](mailto:mbryant@osisoft.com)

Staff Field Service Engineer  
OSIsoft