

University of Iowa's PI Powered Energy Control Center

Presented by

George Paterson

George Paterson

- George-r-paterson@uiowa.edu
- Senior Utilities Systems Specialist
- University of Iowa

Agenda

- Background on University of Iowa
- 2020 Energy Goal
- PI System Role in Meeting Energy Goal

University of Iowa

1. Fall 2013 student enrollment: 31,065
2. Main campus square footage: ~15,000,000
3. Annual utilities budget: ~\$90,000,000
4. Annual “fuels” (fuels & purchased electricity):
~\$30,000,000
5. More than 120 major buildings.

Notable Alumni

- **James Van Allen** — World famous physicist and discoverer of two radiation belts (the Van Allen Belts) that surround the earth. Emeritus Carver Professor of Physics at the University of Iowa. MS, 1936; PhD, 1939, Physics
- **George Gallup** — Founder of the Gallup Poll. BA, 1923.

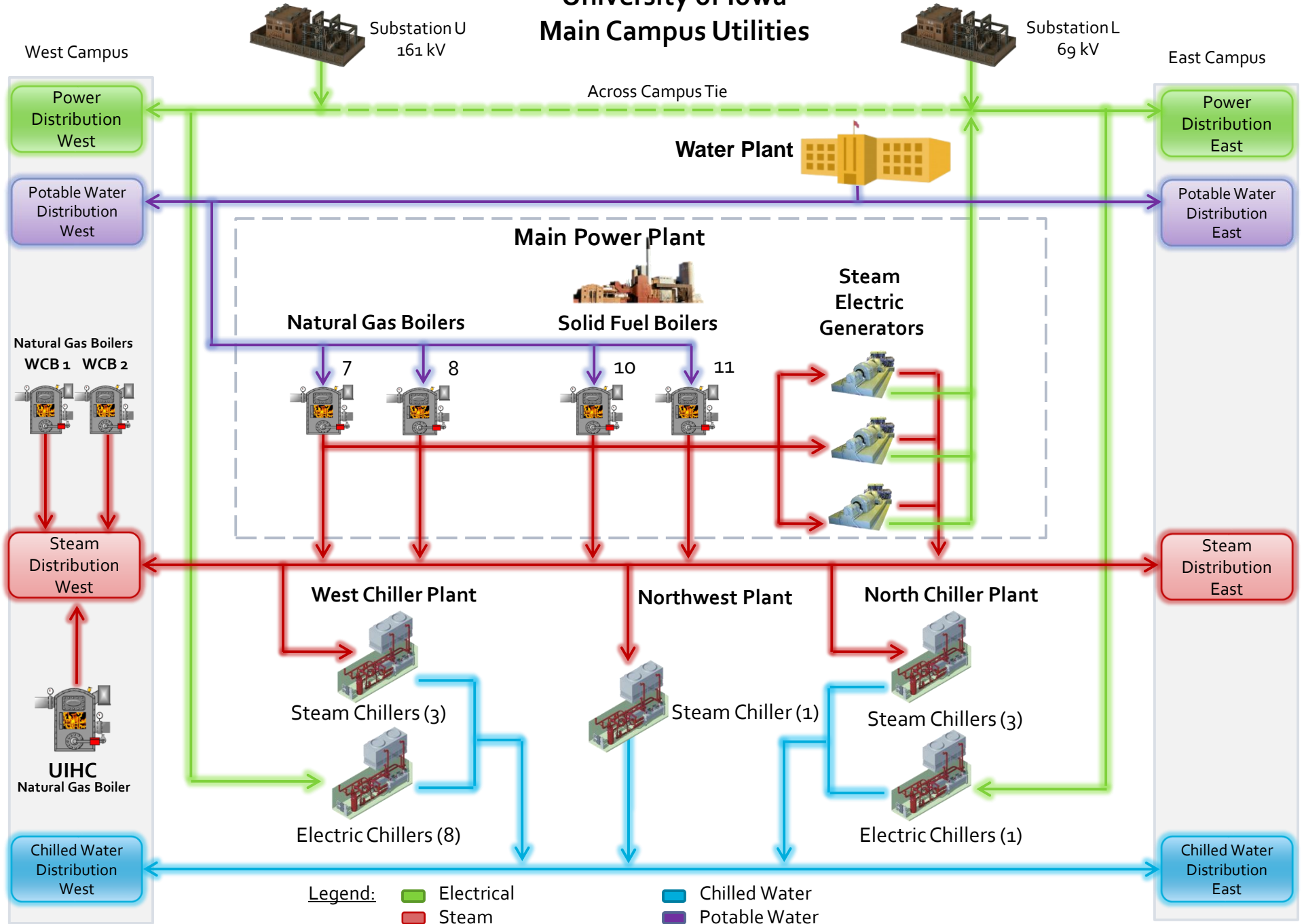
Favorite Alumni

- **Gene Wilder** — Comedic film and television actor whose credits include "Silver Streak," "Young Frankenstein," and "Stir Crazy." BA, 1955, Communication and Theatre Arts





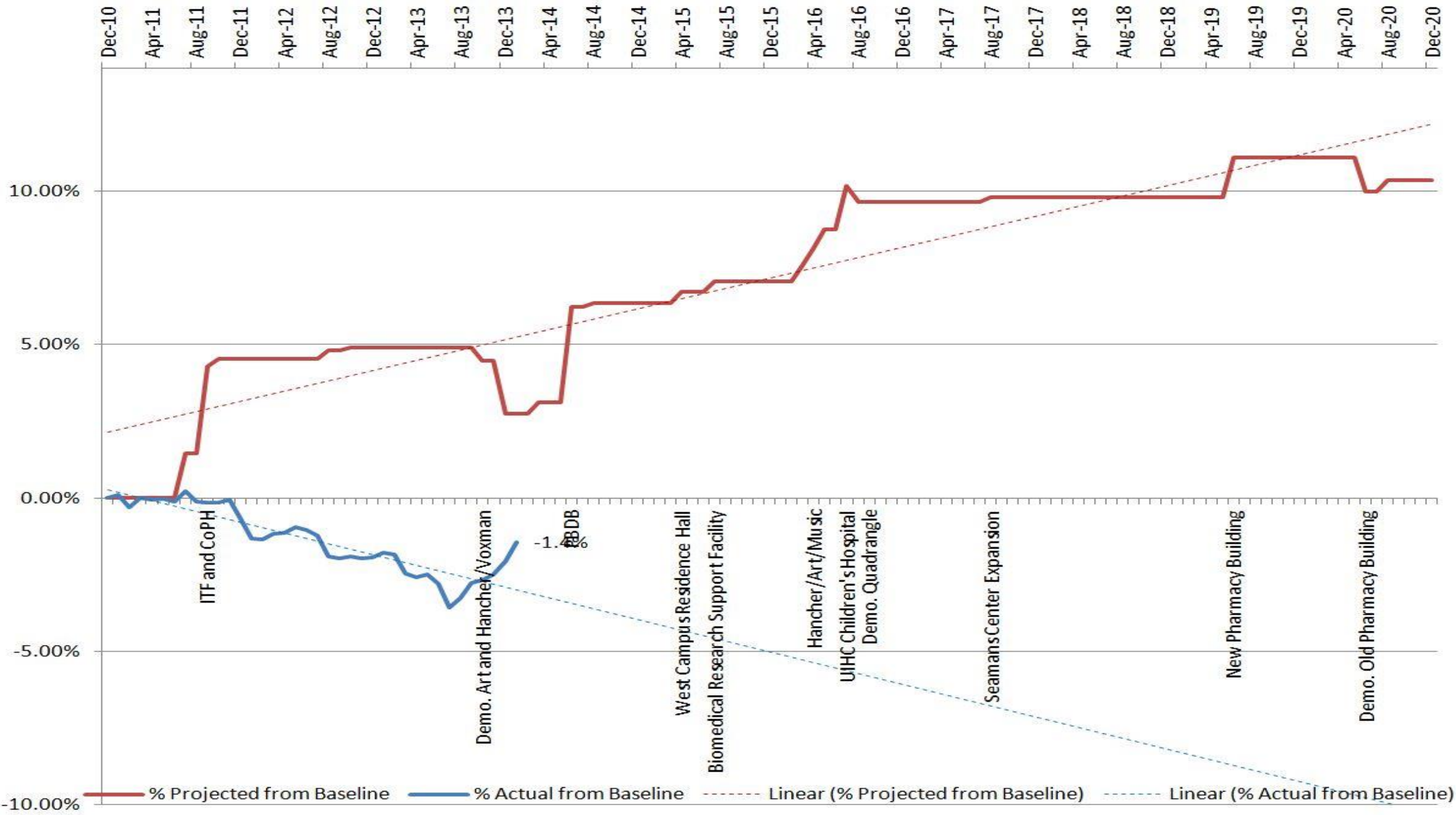
University of Iowa Main Campus Utilities



2020 “Net-Negative” Energy Goal

- Goal is to use no more energy in 2020 than in 2010 despite a billion dollars of new construction on campus.

2020 Energy Goal Progress

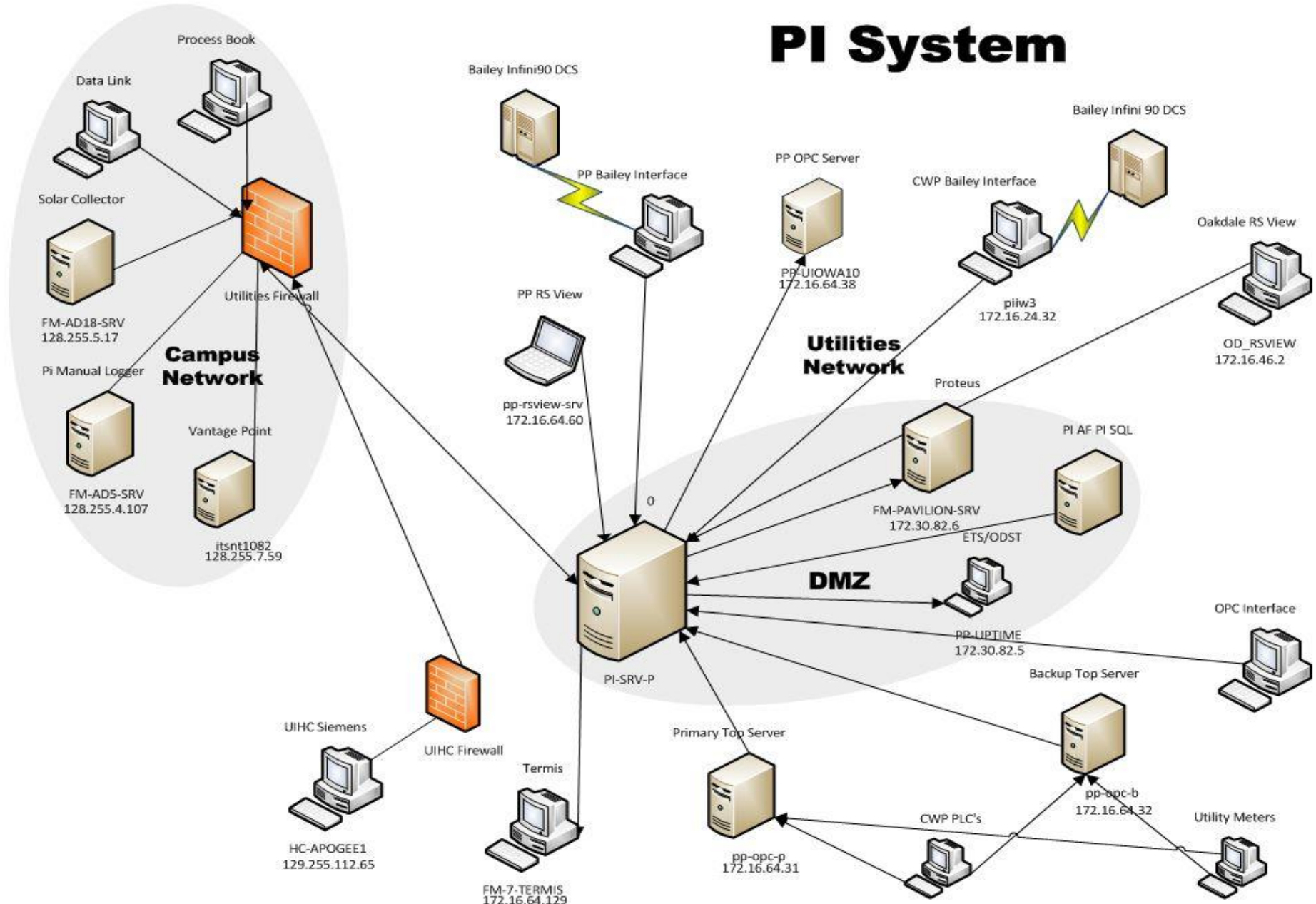


Energy Control Center (ECC)

- Purpose - Use real-time and historical information to optimize energy supply and consumption at the University of Iowa



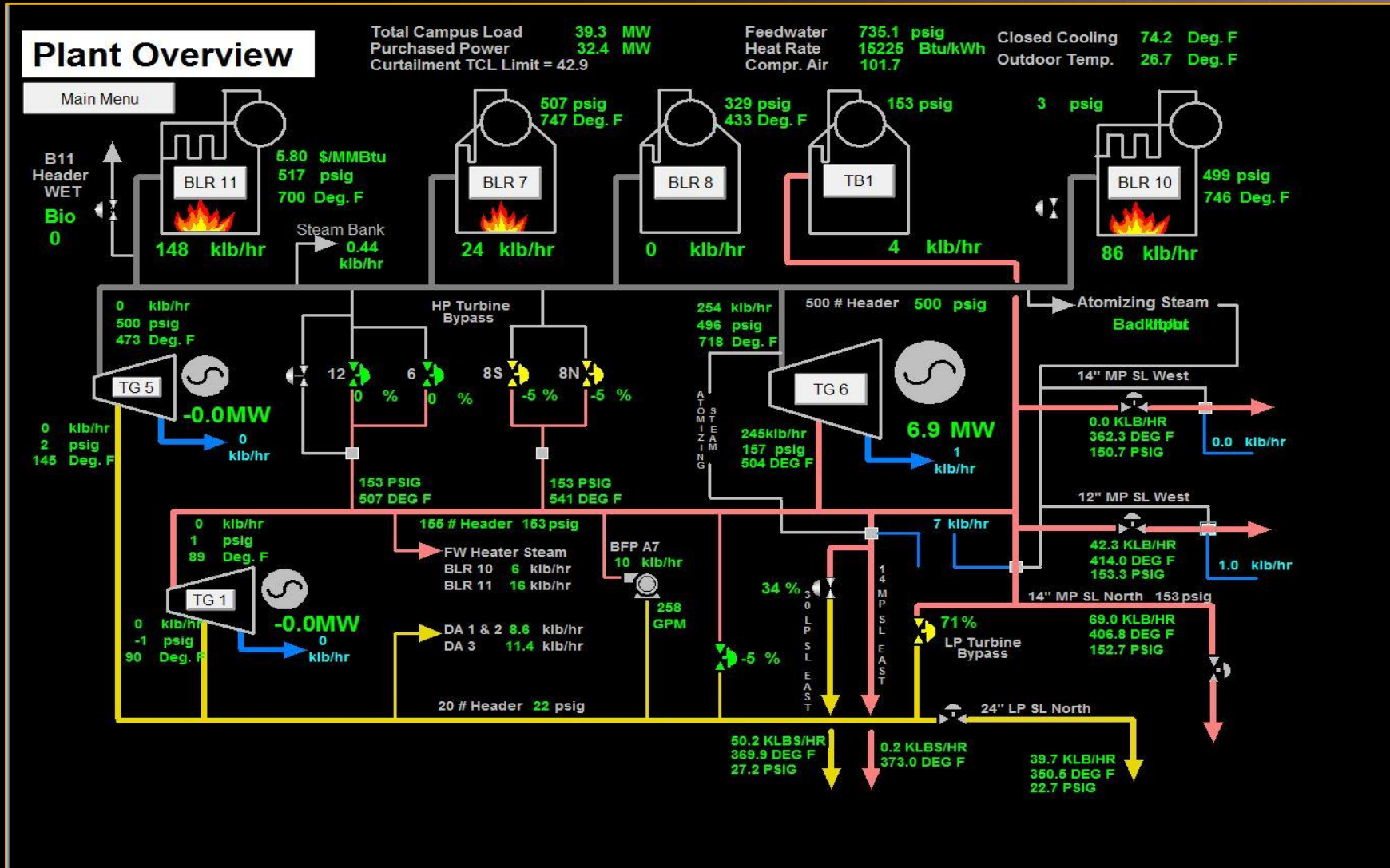
PI System



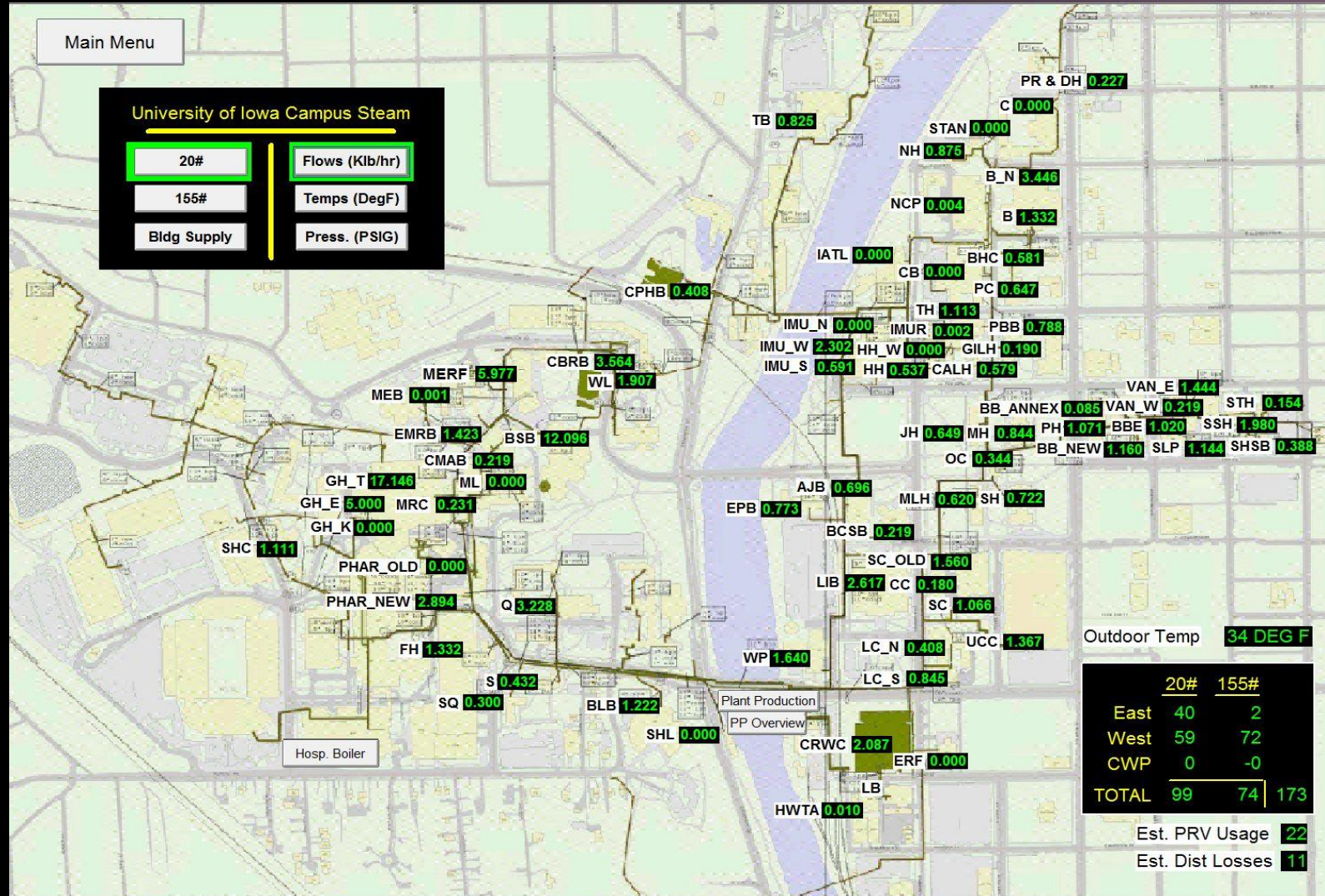
PI System is the backbone of the ECC

- Monitoring and visualization
- Analysis
- Benchmarking
- Demand management
- Link optimization models to live data

Power Plant Overview

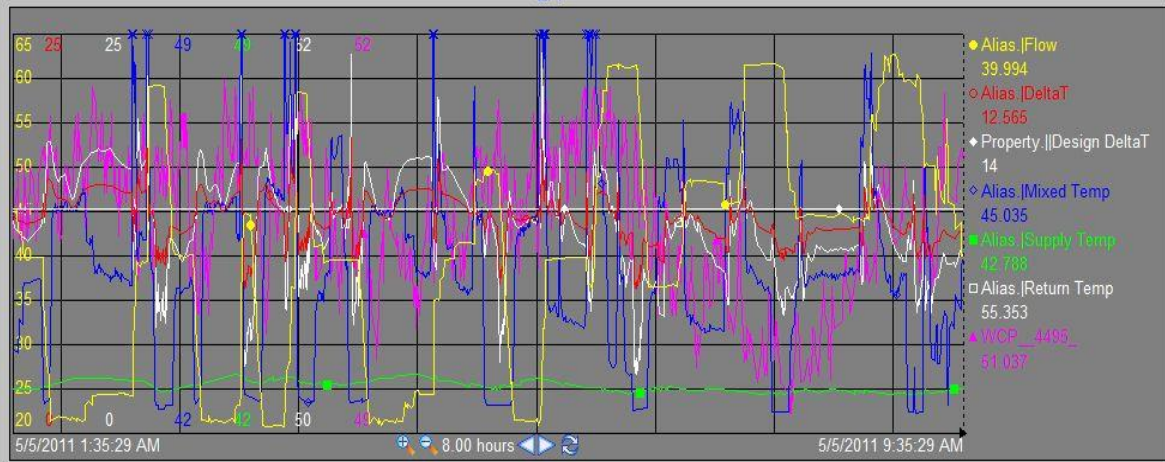
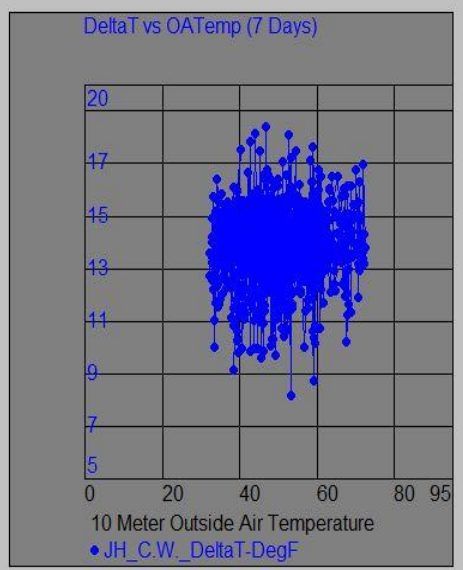
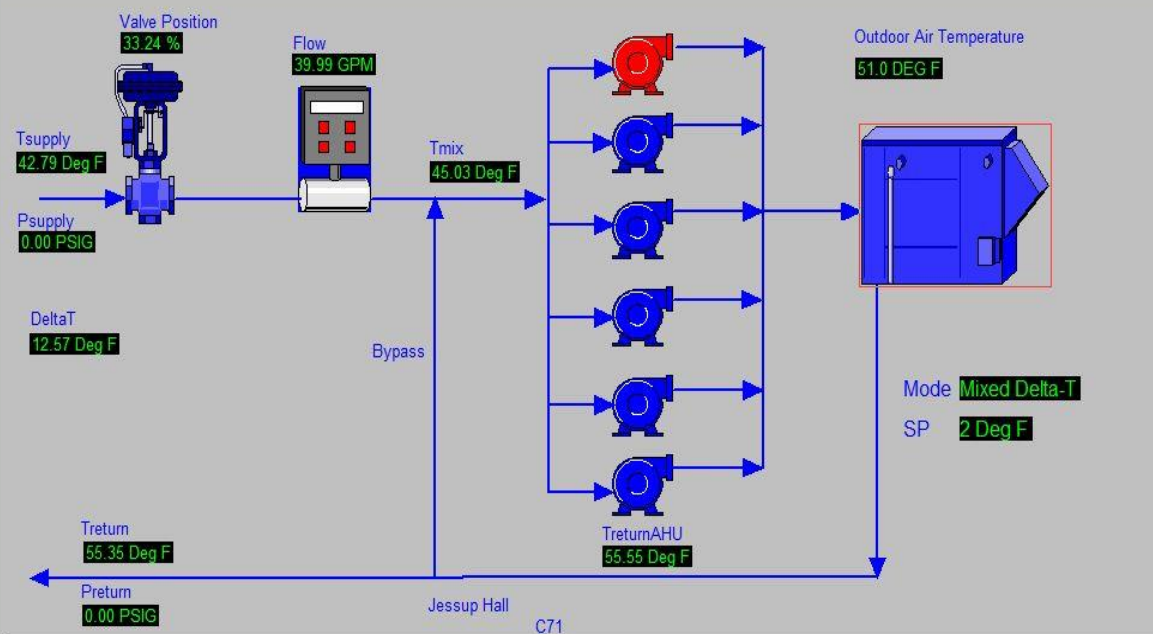


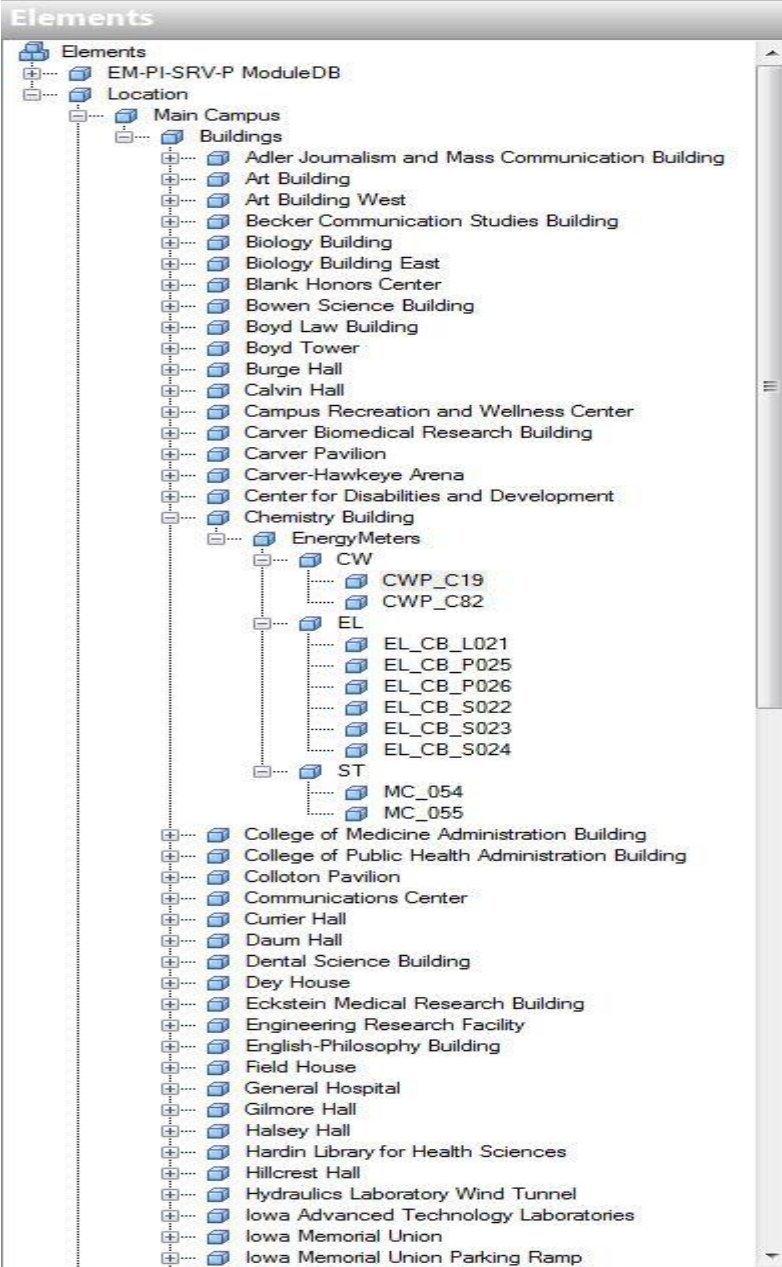
Geographical Displays of Steam, Chilled Water and Electricity Consumption



Available Modules

- Interface1
- John Colleton Pavilio
- Chilled Water
- Interface1
- John Pappajohn Pav
- Chilled Water
- Interface1
- Kinnick Stadium
- Chilled Water
- Interface1
- Press Box
- Library
- Chilled Water
- Interface1
- Lindquist Center
- Chilled Water
- North
- South
- South2
- Macbride Hall
- Chilled Water
- Interface1
- Winter Interfa
- Maclean Hall
- Chilled Water
- Interface1
- Winter Interfa
- Medical Education B
- Chilled Water
- Interface1
- Winter Interfa
- Medical Education a
- Chilled Water
- Interface1
- Interface2
- Medical Library
- Chilled Water
- Courtyard
- Interface1
- Medical Research C
- Chilled Water
- Interface1
- Medical Research Fa
- Chilled Water
- Interface1
- Museum of Art
- Chilled Water
- Interface1
- North Hall
- Chilled Water
- Interface1
- Winter Interfa
- Nursing Building
- Chilled Water
- Interface1
- Old Capitol
- Chilled Water
- Interface1
- Pappajohn Business





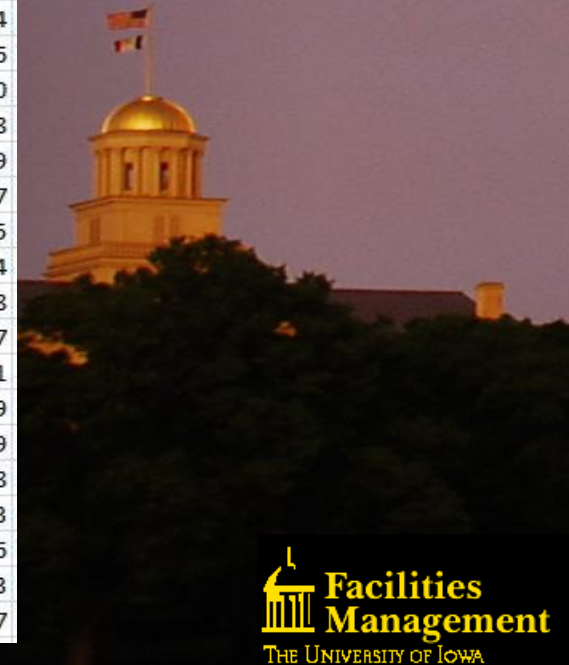
CWP_C19

General	Child Elements	Attributes	Ports	Version
Filter				
Name	Value			
AHURetTemp	49.9337310791016 °F			
BldgDeltaT	4.87809896469116 °F			
D_Gallons	0 US gal			
Deduct	False			
DeltaT	7.34057760238647 delta °F			
DeltaT_HAVg	7.32837200164795 delta °F			
Flow	0.881630897521973 US gal/min			
Flow_HAVg	2.51170539855957 US gal/min			
M_Gallons	0 US gal			
M_MMBTU	0 MM Btu			
MixTemp	45.1555023193359 °F			
Multiplier	1			
Power	0.00323842868196881 MM Btu/h			
Power_HAVg	0.00921071844420366 MM Btu/h			
RetPress	57.5731735229492 psi			
RetTemp	49.7053756713867 °F			
Station_CO	0 %			
Station_Local_Remote	Remote			
Station_Mode	Mixed Delta-T			
Station_PV	2.6490273475647 °F			
Station_SP	3 °F			
SupPress	106.992134094238 psi			
SupTemp	42.3294830322266 °F			

- Elements
- Event Frames
- Library
- Unit of Measure

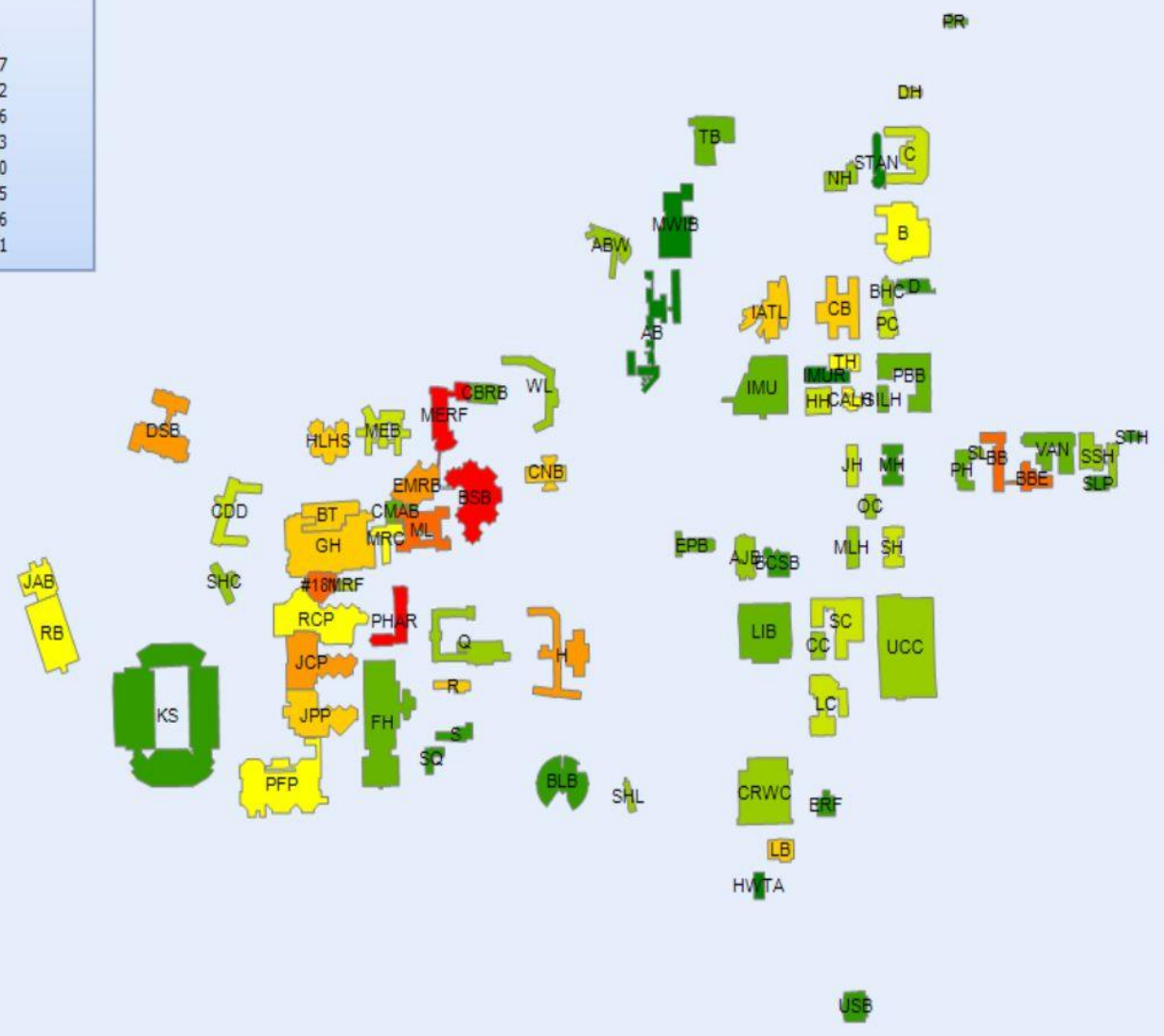
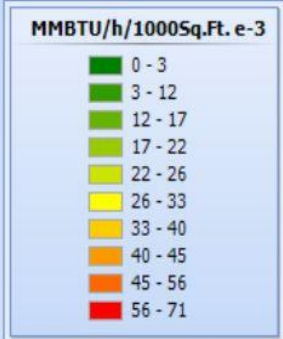
AF Organizes Energy Data by Buildings

	Start	3/1/2013
	End	3/1/2014
\\EM-AF-SRV\PIDB-AF\Location\Main Campus\Buildings		Hourly Peak (KW)
Adler Journalism and Mass Communication Building\EnergyMeters\EL Power_Havg	04-Mar-13 14:00:01	357
Art Building West\EnergyMeters\EL Power_Havg	11-Feb-14 15:00:01	231
Becker Communication Studies Building\EnergyMeters\EL Power_Havg	22-Apr-13 14:00:01	63
Biology Building East\EnergyMeters\EL Power_Havg	10-Feb-14 15:00:01	373
Biology Building\EnergyMeters\EL Power_Havg	09-Apr-13 15:00:01	617
Blank Honors Center\EnergyMeters\EL Power_Havg	17-Jun-13 15:00:01	121
Bowen Science Building\EnergyMeters\EL Power_Havg	26-Aug-13 14:00:01	1578
Boyd Law Building\EnergyMeters\EL Power_Havg	27-Aug-13 16:00:01	401
Boyd Tower\EnergyMeters\EL Power_Havg	10-Sep-13 12:00:01	992
Burge Hall\EnergyMeters\EL Power_Havg	30-Aug-13 14:00:01	994
Calvin Hall\EnergyMeters\EL Power_Havg	09-Apr-13 15:00:01	86
Campus Recreation and Wellness Center\EnergyMeters\EL Power_Havg	03-Oct-13 17:00:01	1060
Carver Biomedical Research Building\EnergyMeters\EL Power_Havg	19-Sep-13 14:00:01	738
Carver Pavilion\EnergyMeters\EL Power_Havg	08-Jan-14 12:00:01	2109
Carver-Hawkeye Arena\EnergyMeters\EL Power_Havg	28-Jan-14 17:00:01	927
Center for Disabilities and Development\EnergyMeters\EL Power_Havg	01-May-13 11:00:01	155
Chemistry Building\EnergyMeters\EL Power_Havg	29-Aug-13 15:00:01	1094
College of Public Health Administration Building\EnergyMeters\EL Power_Havg	08-Apr-13 13:00:01	348
Colloton Pavilion\EnergyMeters\EL Power_Havg	12-Aug-13 11:00:01	3227
Communications Center\EnergyMeters\EL Power_Havg	10-Sep-13 14:00:01	61
Currier Hall\EnergyMeters\EL Power_Havg	30-Aug-13 15:00:01	489
Daum Hall\EnergyMeters\EL Power_Havg	30-Aug-13 14:00:01	269
Dental Science Building\EnergyMeters\EL Power_Havg	02-Jan-14 13:00:01	1128
Eckstein Medical Research Building\EnergyMeters\EL Power_Havg	09-Aug-13 12:00:01	823
English-Philosophy Building\EnergyMeters\EL Power_Havg	22-Oct-13 13:00:01	106
Field House\EnergyMeters\EL Power_Havg	21-Nov-13 12:00:01	343
General Hospital\EnergyMeters\EL Power_Havg	11-Jun-13 13:00:01	1377

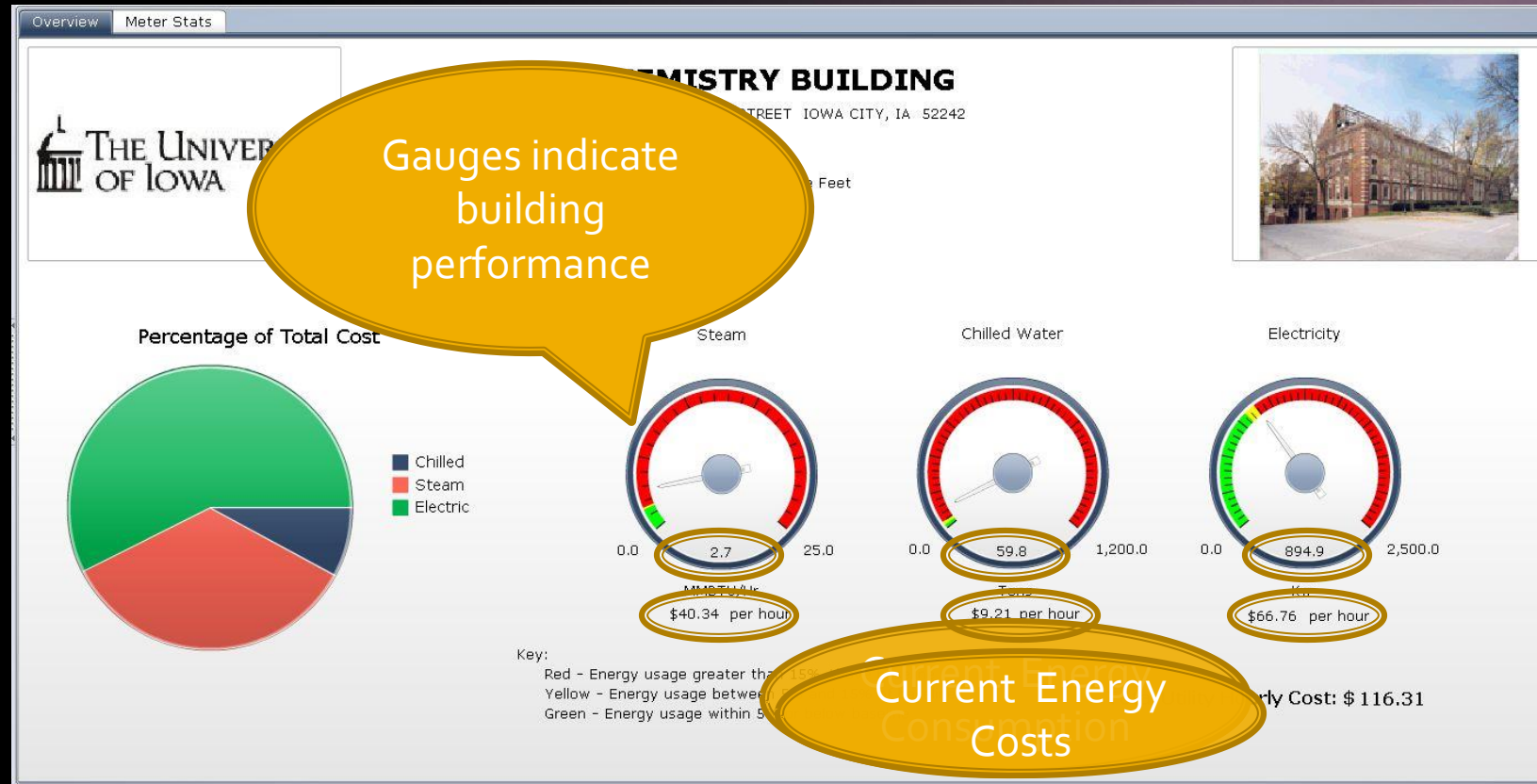


Click the building icon to get information in detail

Energy Intensity



Building Energy Dashboard

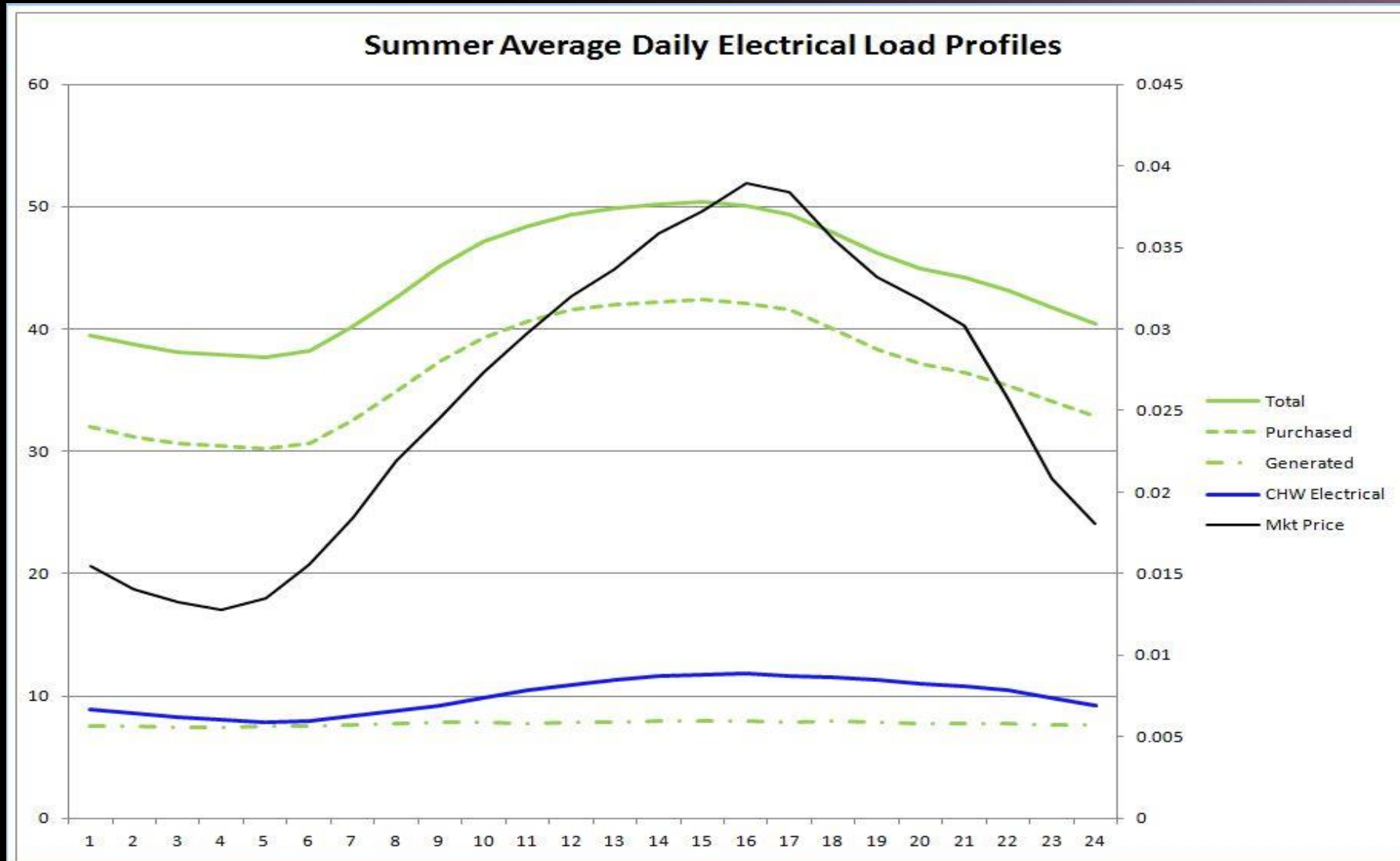


- Building dashboards monitor the demand for steam, chilled water and electricity in all buildings.

Building Matrix

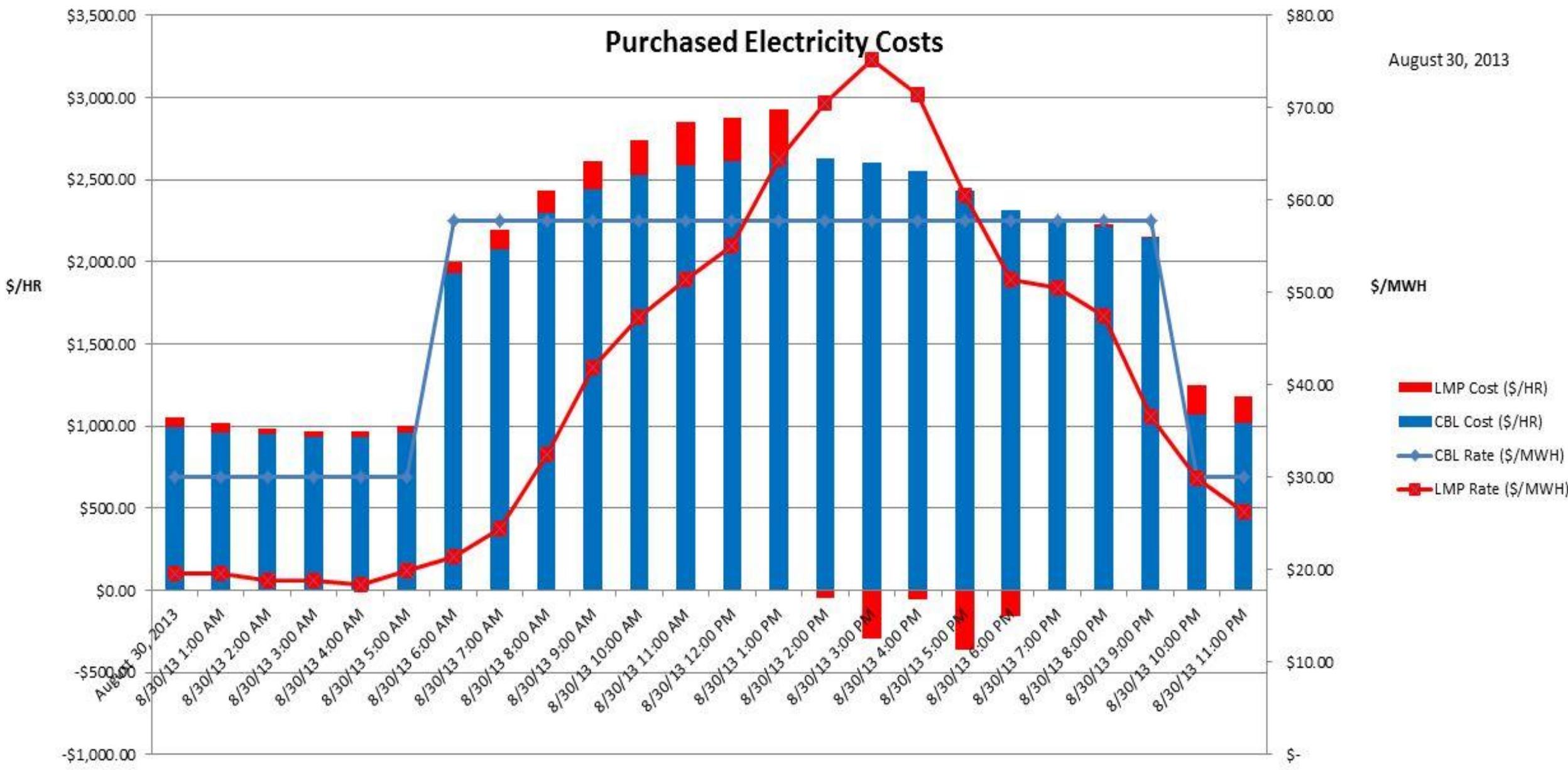
Daily Utilities				Below Baseline Above			Data from 03/06/2010 23:05 to 03/07/2010 23:05				
MAIN CAMPUS (WEST)	Consumed			units per k-Sq Ft			Dollars			Total	
	Ton-Hours	mmBtu	KW	Ton-Hours	mmBtu	KW	Ton-Hours	mmBtu	KW	\$/day	\$/ksq ft
ART BUILDING				-	-	-	\$0.00	\$0.00	\$0.00	\$0.00	\$0.00
ART BUILDING WEST				-	-	-	\$0.00	\$0.00	\$0.00	\$0.00	\$0.00
BOWEN SCIENCE BUILDING	135.42	329.99	18,643.04	0.42	1.01	57.19	\$22.36	\$4,953.68	\$1,390.77	\$6,366.82	\$19.53
BOYD LAW BUILDING		46.38	1,407.21	-	0.24	7.42	\$0.00	\$696.28	\$104.98	\$801.26	\$4.22
CARVER BIOMEDICAL RESEARCH BUILDIN		72.86	12,595.43	-	0.54	93.56	\$0.00	\$1,093.68	\$939.62	\$2,033.30	\$15.10
CARVER-HAWKEYE ARENA		56.13		-	0.26	-	\$0.00	\$842.54	\$0.00	\$842.54	\$3.95
COLLEGE OF MEDICINE ADMINISTRATION	213.33	6.44		6.17	0.19	-	\$32.71	\$96.67	\$0.00	\$129.38	\$3.74
DENTAL SCIENCE BUILDING	159.72	118.74	5,845.74	0.80	0.59	29.11	\$21.12	\$1,782.44	\$436.09	\$2,239.65	\$11.15
ECKSTEIN MEDICAL RESEARCH BUILDING	518.19	134.17	14,676.79	3.77	0.98	106.72	\$79.45	\$2,014.14	\$1,094.89	\$3,188.48	\$23.18
FIELD HOUSE		94.36	6,051.30	-	0.28	18.10	\$0.00	\$1,416.47	\$451.43	\$1,867.90	\$5.59
HARDIN LIBRARY FOR HEALTH SCIENCES		49.26	7,809.25	-	0.56	89.34	\$0.00	\$739.41	\$582.57	\$1,321.98	\$15.12
HILLCREST		86.62		-	0.32	-	\$0.00	\$1,300.30	\$0.00	\$1,300.30	\$4.86
HYDRAULICS LABORATORY		0.47	1,507.63	-	0.01	44.36	\$0.00	\$7.07	\$112.47	\$119.54	\$3.52
KINNICK STADIUM		35.22		-	0.09	-	\$0.00	\$528.72	\$0.00	\$528.72	\$1.39
MEDICAL EDUCATION BUILDING	18.45	35.85	1,302.76	0.22	0.42	15.21	\$2.85	\$538.17	\$97.19	\$638.20	\$7.45
MEDICAL EDUCATION RESEARCH FACILIT		138.51	17,703.24	-	0.65	82.52	\$0.00	\$2,079.32	\$1,320.66	\$3,399.98	\$15.85
MEDICAL LABORATORIES	406.85	137.74	17,406.21	2.07	0.70	88.36	\$62.59	\$2,067.72	\$1,298.50	\$3,428.81	\$17.41
MEDICAL RESEARCH CENTER	664.04		4,476.66	6.97	-	47.00	\$102.44	\$0.00	\$333.96	\$436.40	\$4.58
MEDICAL RESEARCH FACILITY	118.46	7.19	1,804.67	3.45	0.21	52.60	\$18.23	\$107.93	\$134.63	\$260.80	\$7.60
MUSIC WEST - INTERIM BUILDING	438.56	2.39	674.55	6.00	0.03	9.22	\$72.33	\$35.94	\$50.32	\$158.59	\$2.17
NURSING BUILDING	6.79	28.35	1,647.40	0.09	0.37	21.27	\$1.20	\$425.53	\$122.90	\$549.62	\$7.10
PHARMACY BUILDING	1,842.94	146.77	12,108.33	12.89	1.03	84.69	\$283.59	\$2,203.19	\$903.28	\$3,390.06	\$23.71
QUADRANGLE		145.59		-	1.05	-	\$0.00	\$2,185.45	\$0.00	\$2,185.45	\$15.80
RECREATION BUILDING	0.08	36.72	3,051.11	0.00	0.24	19.81	\$0.00	\$551.28	\$227.61	\$778.89	\$5.06
RIENOW HALL				-	-	-	\$0.00	\$0.00	\$0.00	\$0.00	\$0.00
SLATER HALL		48.16		-	0.41	-	\$0.00	\$722.90	\$0.00	\$722.90	\$6.19
SOUTH QUAD		3.33	463.38	-	0.12	16.56	\$0.00	\$49.98	\$34.57	\$84.54	\$3.02
THEATRE BUILDING	23.68	18.10	1,747.72	0.29	0.22	21.57	\$3.75	\$271.72	\$130.38	\$405.85	\$5.01
WENDELL JOHNSON SPEECH AND HEARI		16.22	1,500.40	-	0.25	22.92	\$0.00	\$243.43	\$111.93	\$355.36	\$5.43
WESTLAWN	437.79	34.29	2,828.71	3.09	0.24	19.97	\$67.13	\$514.73	\$211.02	\$792.89	\$5.60
Totals ----->	4984	1830	135252	3.30	0.42	45.12	\$769.77	\$27,468.71	\$10,089.76	\$38,328.23	\$9.01

Analysis re: Electrical Contract



Purchased Electricity Costs

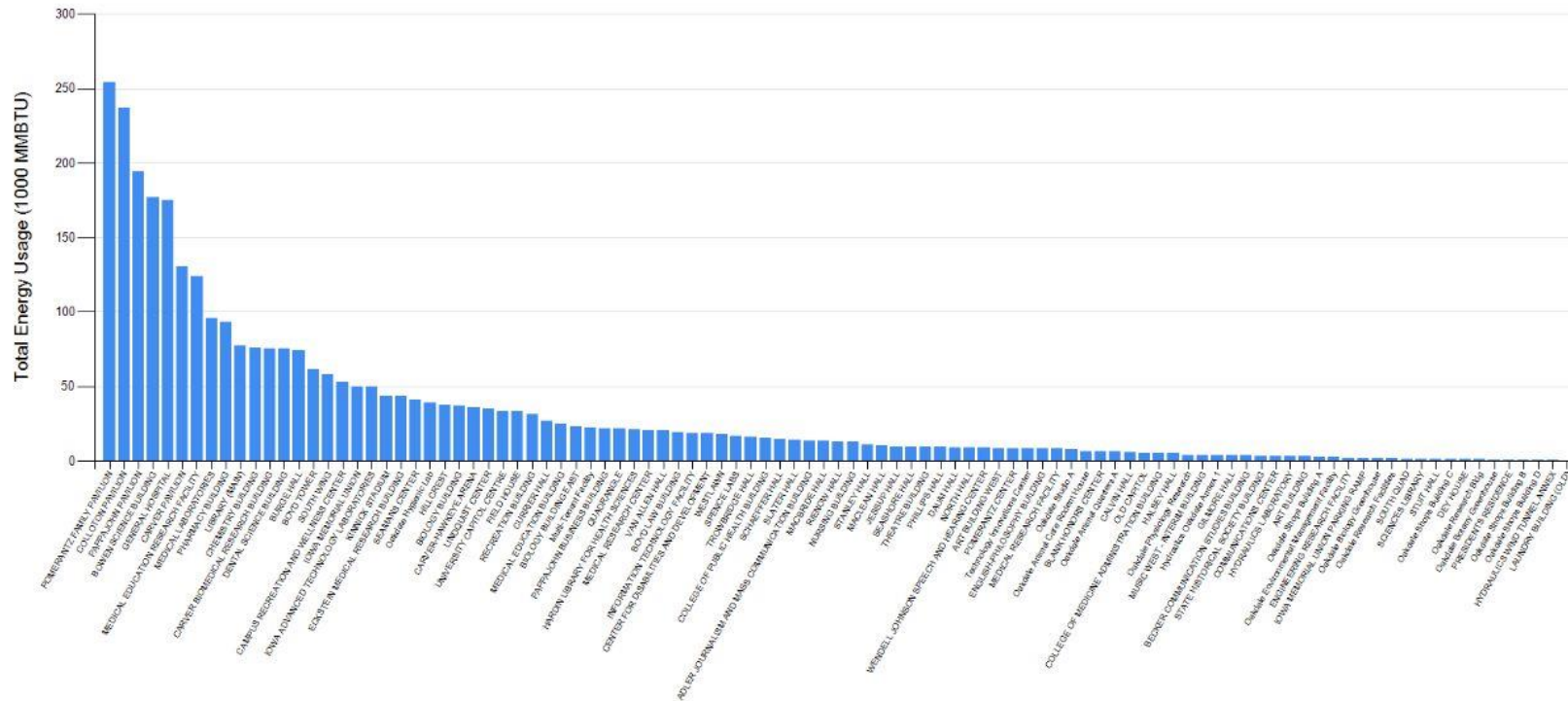
August 30, 2013



- LMP Cost (\$/HR)
- CBL Cost (\$/HR)
- ◆ CBL Rate (\$/MWH)
- LMP Rate (\$/MWH)

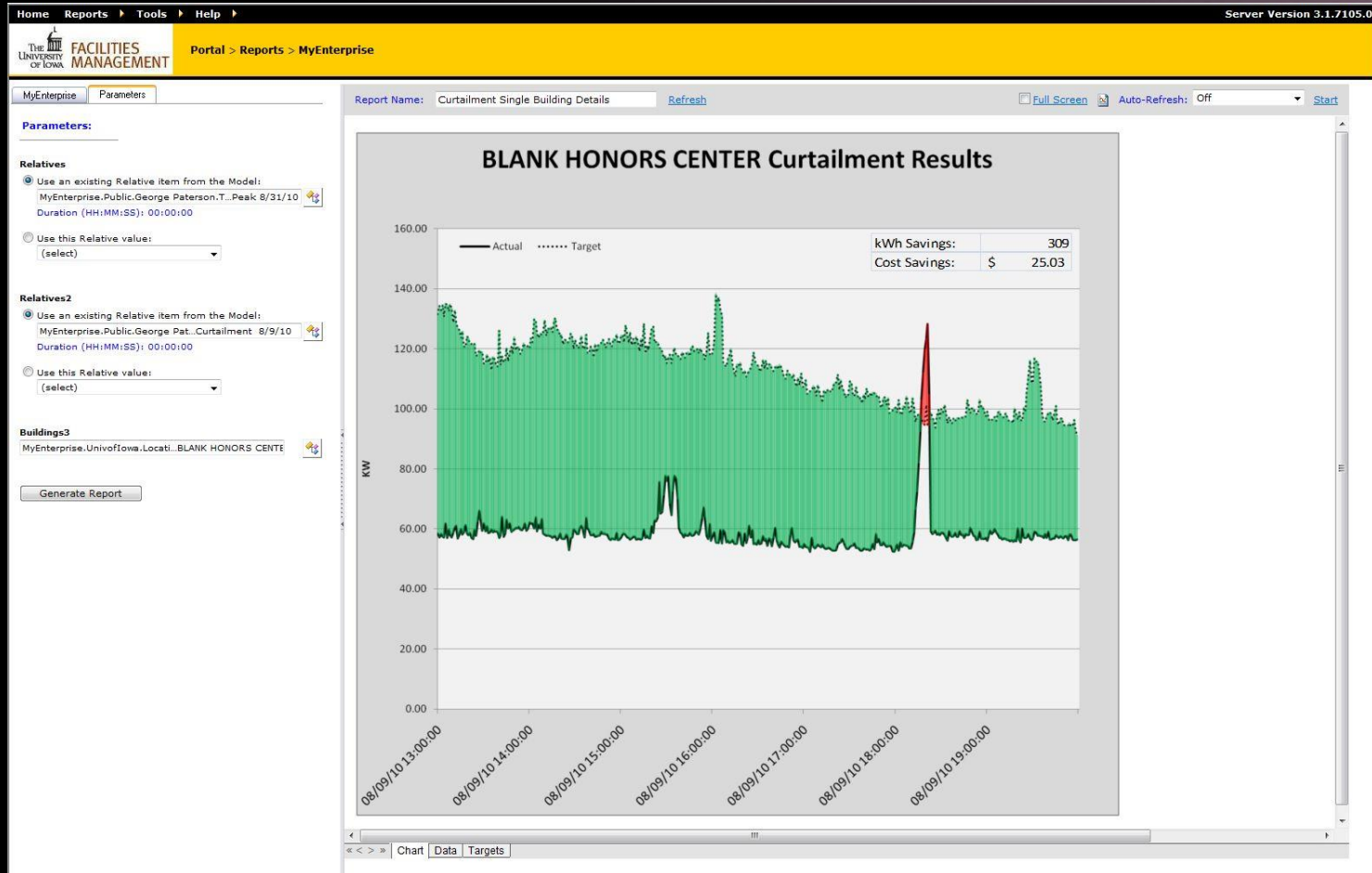
Benchmarking

2013 Actual Energy



3/17/2014 10:28:09 AM

Demand Management

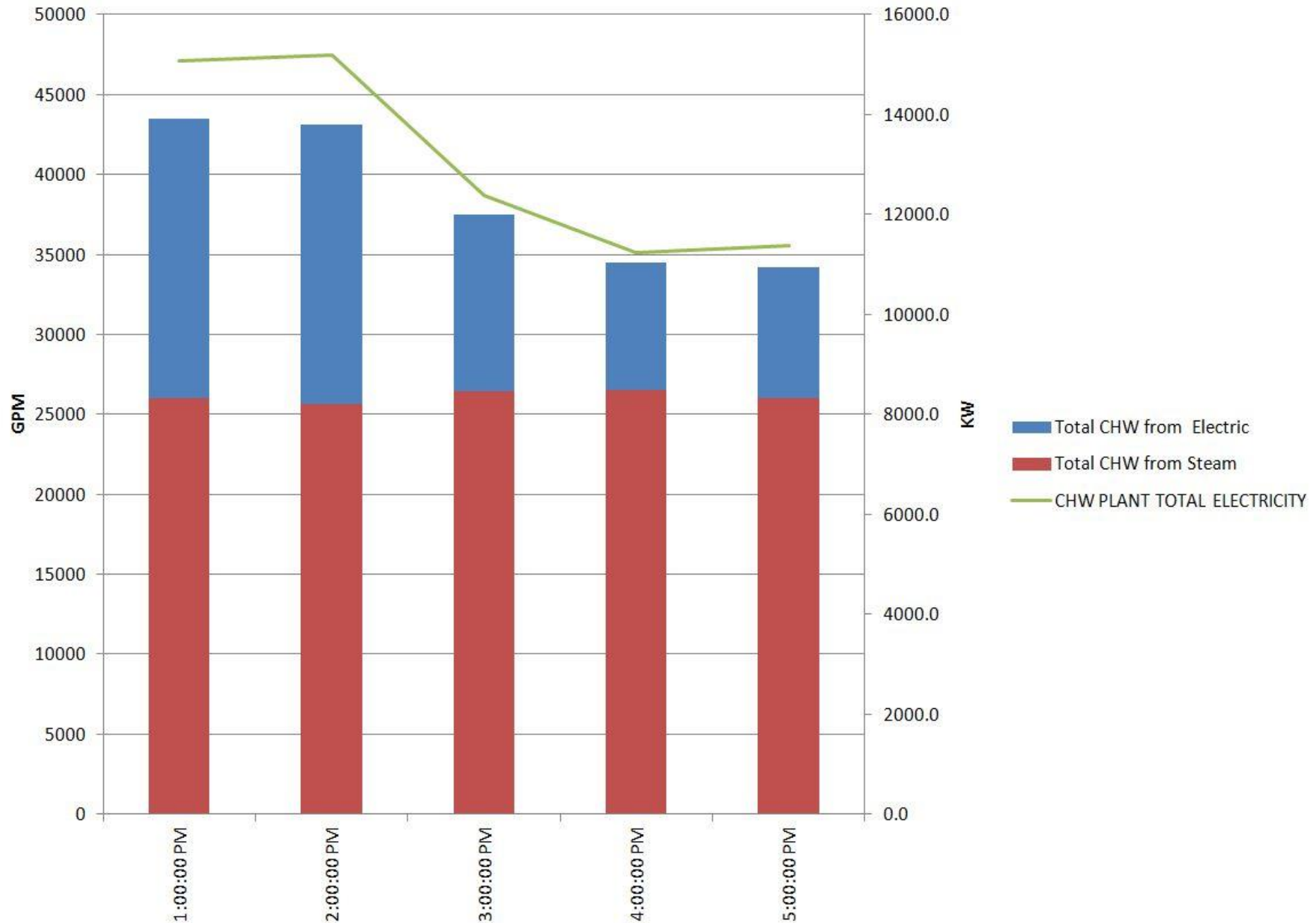


Curtailment Summary

	Start	8/29/13 3:00 PM	8/30/13 3:00 PM				
	End	8/29/13 6:00 PM	8/30/13 6:00 PM				
EAST CAMPUS		Peak Day (KWH)	Curtailment (KWH)	Avg KW Savings	Avg KW Savings Target	Target Savings %	Actual Savings %
ADLER JOURNALISM AND MASS COMMUNICATION BUILDING		818	583	78	170	62%	29%
BECKER COMMUNICATION STUDIES BUILDING		126	94	11		0%	25%
BIOLOGY BUILDING		1,480	1,601	(40)		0%	-8%
BIOLOGY BUILDING EAST		994	939	18		0%	6%
BLANK HONORS CENTER		-	-	-	112	0%	0%
BURGE HALL		2,850	2,872	(7)		0%	-1%
CALVIN HALL		191	103	30	54	84%	46%
CAMPUS RECREATION AND WELLNESS CENTER		2,927	2,948	(7)	116	12%	-1%
CHEMISTRY BUILDING		3,249	3,119	43		0%	4%
COMMUNICATIONS CENTER		159	117	14		0%	26%
CURRIER HALL		1,401	1,441	(13)		0%	-3%
DAUM HALL		731	762	(10)		0%	-4%
DEY HOUSE		-	-	-	49	0%	0%
ENGLISH-PHILOSOPHY BUILDING		410	285	42		0%	31%
GILMORE HALL		172	156	5		0%	9%
HALSEY HALL		253	217	12	50	60%	15%
IOWA ADVANCED TECHNOLOGY LABORATORIES		1,236	1,117	40	245	59%	10%
IOWA MEMORIAL UNION		1,500	1,419	27		0%	5%
IOWA MEMORIAL UNION PARKING RAMP		96	98	(0)		0%	-1%
JESSUP HALL		-	-	-	287	0%	0%
MADISON STREET SERVICES BUILDING		-	-	-	183	0%	0%
LIBRARY (MAIN)		2,193	1,506	229		0%	31%
LINDQUIST CENTER		1,619	1,332	96	101	19%	18%
MACBRIDE HALL		560	507	18	22	12%	9%
MACLEAN HALL		527	360	56		0%	32%
NORTH HALL		347	229	39	168	145%	34%
OLD CAPITOL		173	155	6	90	157%	10%
PAPPAJOHN BUSINESS BUILDING		1,561	1,138	141		0%	27%
PHILLIPS HALL		-	-	-	148	0%	0%
POMERANTZ CENTER		-	-	-		0%	0%
SCHAEFFER HALL		620	239	127		0%	61%
SCIENCES LIBRARY		56	32	8	84	446%	43%
SEAMANS CENTER		1,696	1,573	41	48	9%	7%
SEASHORE HALL		617	494	41		0%	20%
SPENCE LABS		464	353	37		0%	24%
STANLEY HALL		770	799	(10)		0%	-4%
STUIT HALL		44	32	4		0%	26%
TROWBRIDGE HALL		341	291	17	118	104%	15%
UNIVERSITY CAPITOL CENTRE		4,263	3,825	146		0%	10%
UNIVERSITY SERVICES BUILDING		1,126	258	289		0%	77%
VAN ALLEN HALL		986	857	43		0%	13%
EAST CAMPUS TOTALS		36,558	31,853	1,568		17%	13%
EAST and WEST CAMPUS COMBINED		69,827	62,977	2,283		12%	10%
EAST, WEST and UIHC COMBINED TOTALS		110,032	102,111	2,641		8%	7%
CHILLED WATER PLANTS		46,173	34,990	3,727			24%



Chilled Water Dispatch

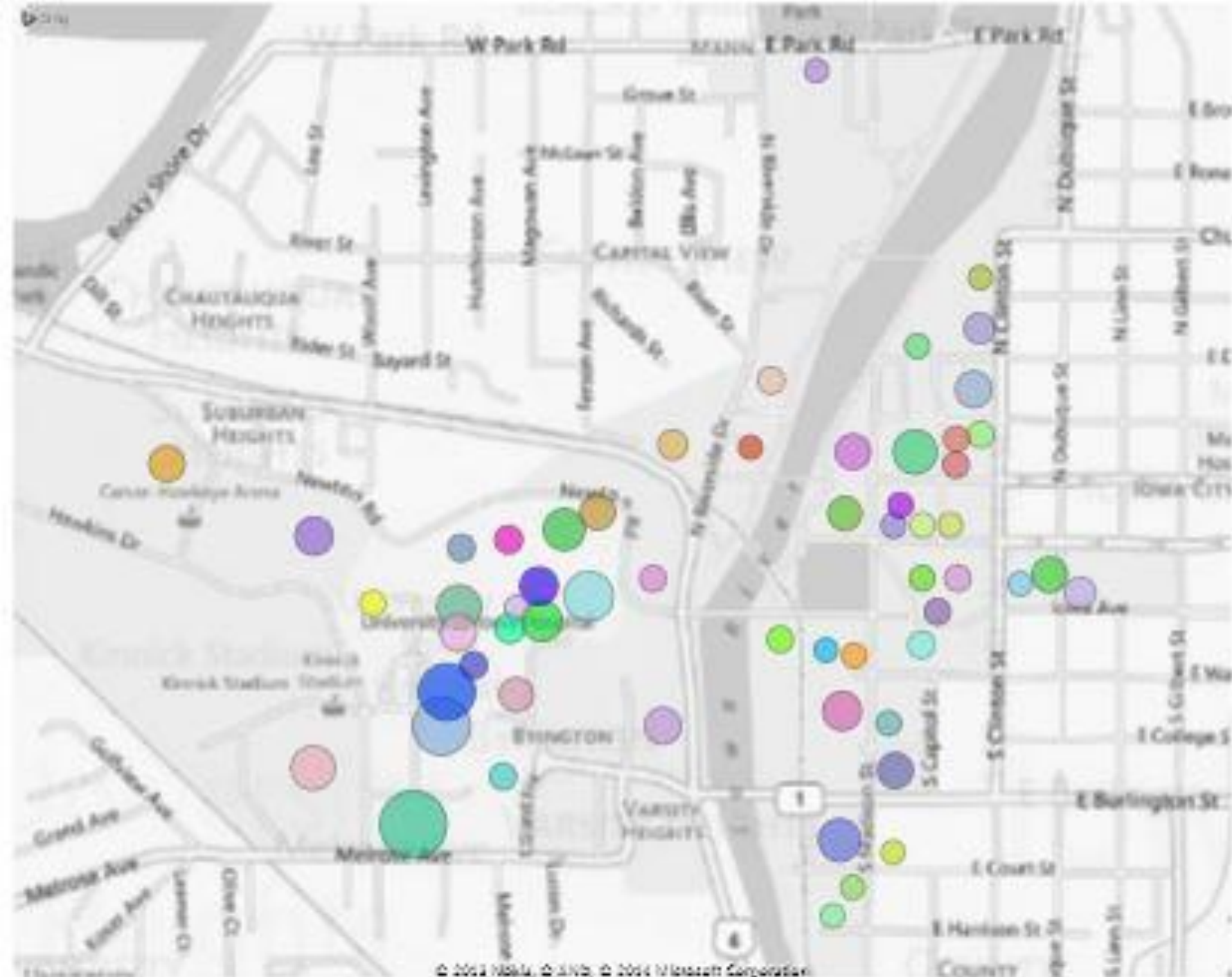


Optimization Models with Live Data

- Steam Distribution Model using Termis by 7 Technologies
- Optimized dispatch of steam, electric and chilled water production equipment using Proteus by Rockwell Automation.

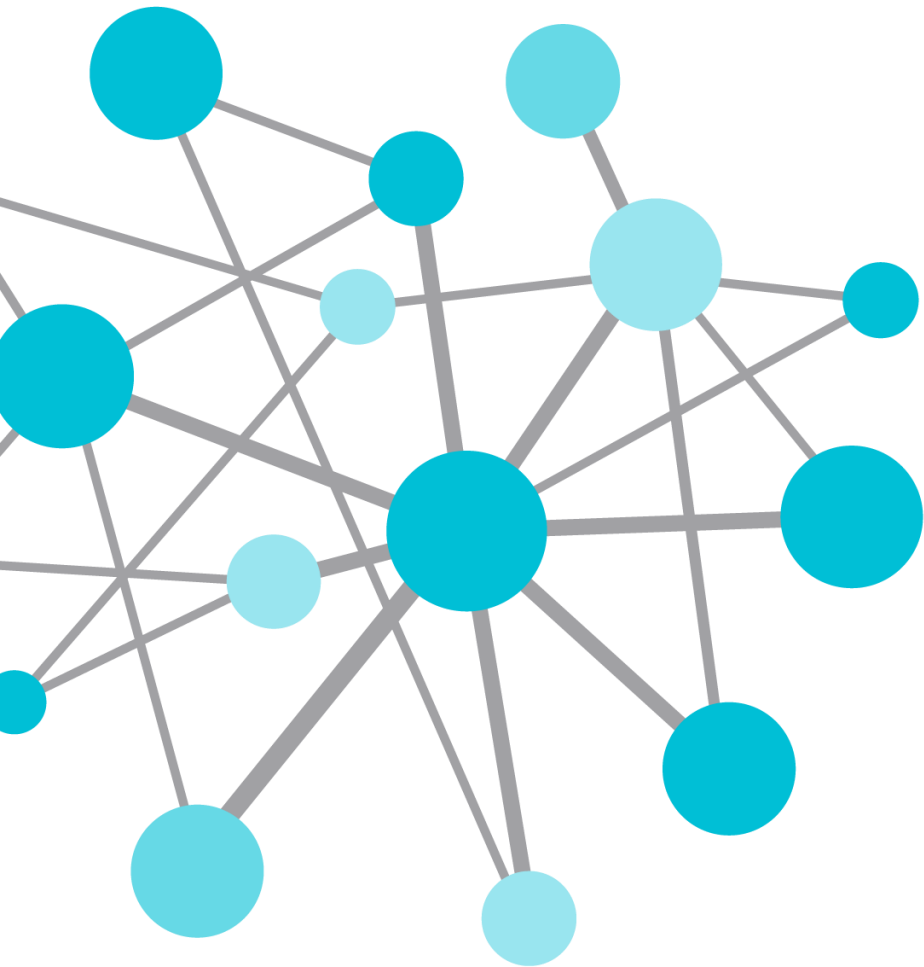
Future

- Use ESRI with PI System for all of our maps
- Add building automation data hierarchy in AF and build fault detection system for building systems.
- Use Microsoft Business Intelligence Tools to analyze our data more quickly and completely.



Building Name

- Adler Journalism and Mass Communication
- Art Building
- Becker Communication Studies Building
- Biology Building
- Biology Building East
- Blank Honors Center
- Bowen Science Building
- Boyd Tower
- Burge Hall
- Campus Recreation and Wellness Center
- Carver Biomedical Research Building
- Carver Pavilion
- Carver-Hawkeye Arena
- Center for Disabilities and Development
- Chemistry Building
- College of Medicine Administration Building
- College of Public Health Administration Building
- Colleton Pavilion
- Communications Center
- Currier Hall
- Daum Hall
- Dental Science Building
- Dey House
- Eckstein Medical Research Building
- Engineering Research Facility
- English-Philosophy Building
- Field House



THANK
YOU

Brought to you by  **OSIsoft.**