



# ESRI ArcGIS & OSIsoft PI System Integration

Bogdan Cheveresan, Esri Romania



# Esri Serving Our Users

Advancing GIS and Spatial Literacy

Founded in 1969 by Jack and Laura Dangermond

ArcGIS Platform

Strong and Growing

Making a Difference

Contributing to Society

Esri Romania – Founded in 1993

Products

Support

Education

Esri Press

Services

Governments, industry leaders, academics, and nongovernmental organizations (NGOs) trust us to connect them with the analytic knowledge they need to make these critical decisions that shape the planet.

# Users

A Global Network of GIS Professionals





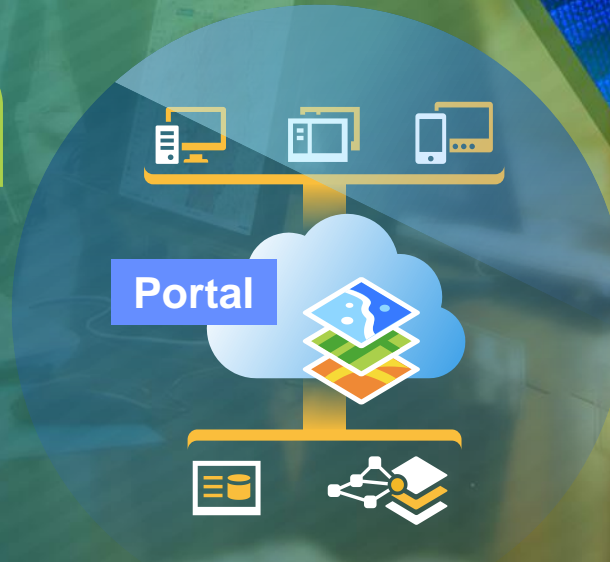
[illegible]

*“Understanding precedes action”*



# ArcGIS Platform

An Integrated System

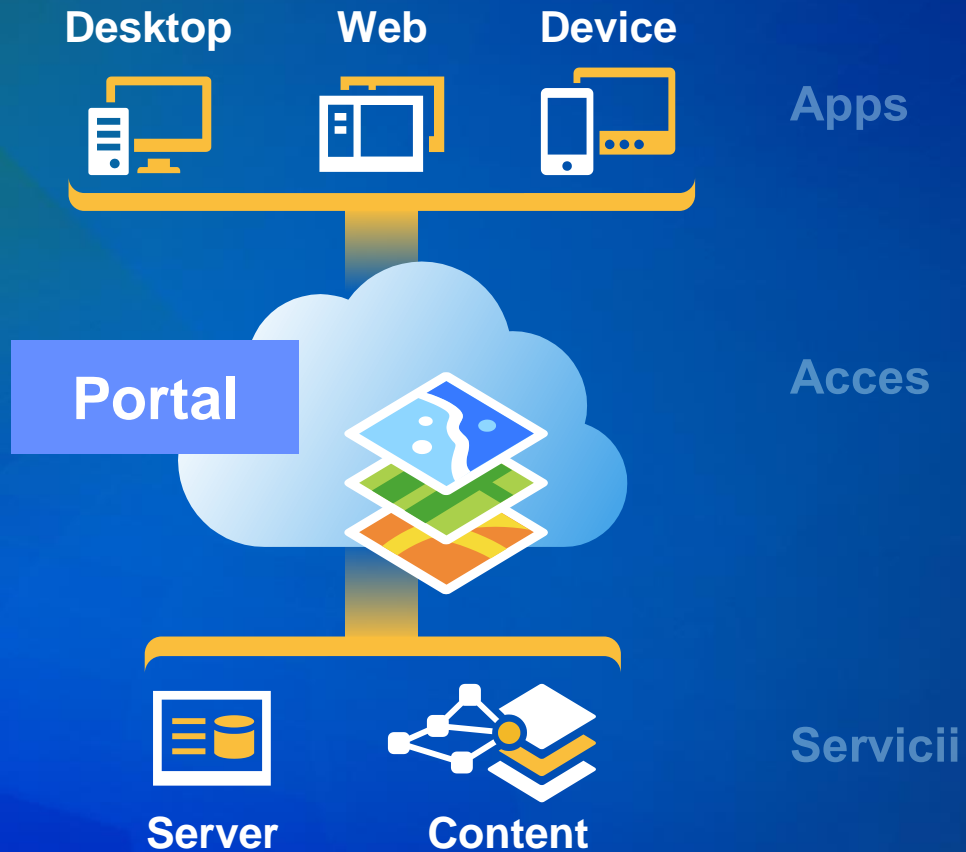


# ArcGIS

Integrated Web Platform

Discover, Use, Create and Share Maps on Any Device Anytime, Anywhere

Simple  
Open  
Configurable





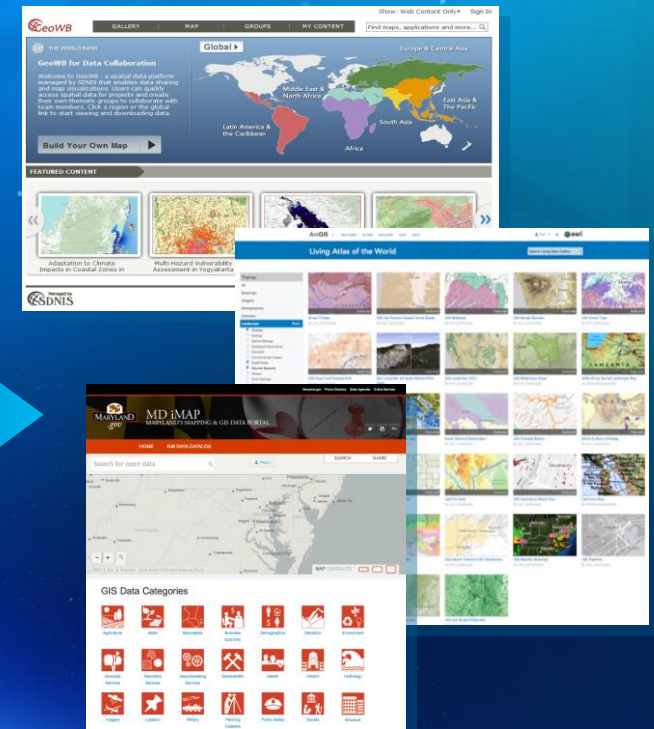
# Web GIS Integrates All Types of Information

Organizing and Sharing Your Work

Web Maps  
and Services



Portal



*Both Internally and on the Open Web*

# Interoperability

Ensuring Data and  
System Interoperability

## Standards

WCS  
WMS  
GeoPackage  
GML  
KML  
WFS  
CSW  
OGC  
WMTS  
WPS  
OPENDAP  
SOAP  
WWW  
NetCDF  
SLD  
REST  
ISO  
LAS  
IFC

## Industry Formats and Models

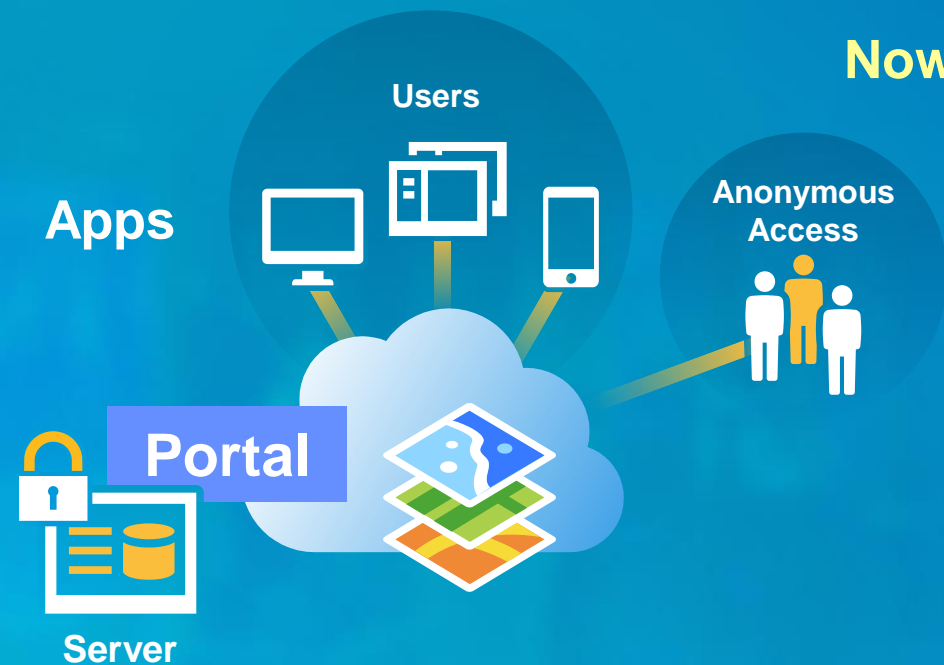
WaterML  
DXF  
OneGeology  
Imagery  
DWG  
DBMS  
AIXM  
OLEDB  
CityGML  
DGN  
COLLADA  
Hadoop  
FileGDB  
Shapefiles  
INSPIRE



# Server

Enterprise GIS in  
Your Own Infrastructure

## Now a Web GIS



Providing Geodata Management, Analysis, and Mapping

## New

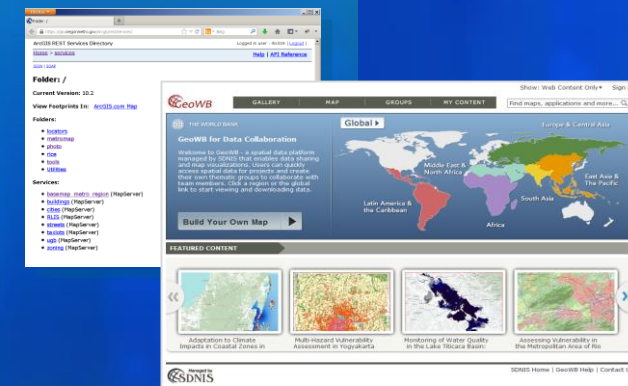
- Portal (Included)
- Custom Roles
- 3D Services
- Real-Time Services



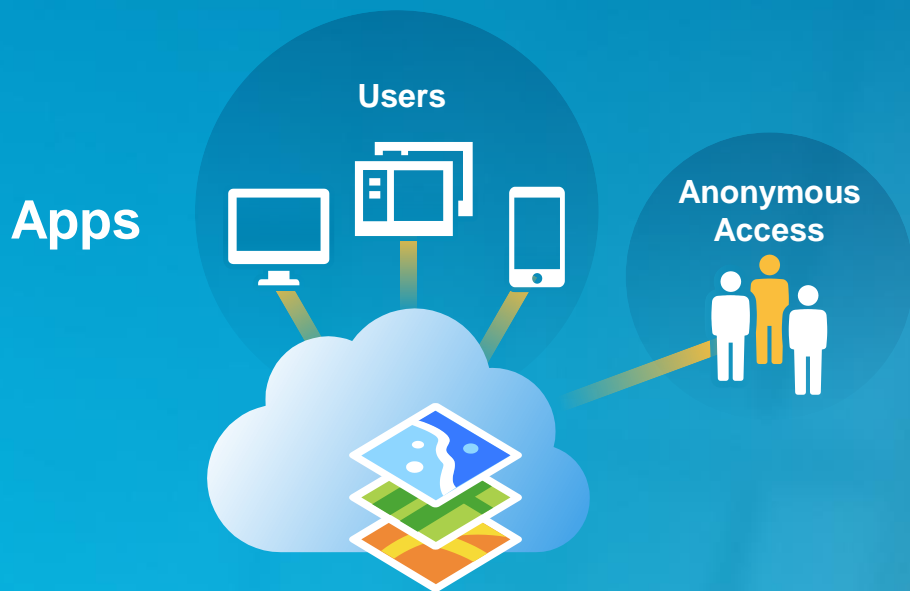
## Monitoring Tools

## Improved

- Scalability and Quality
- Authentication (SAML)
- Active Directory Support



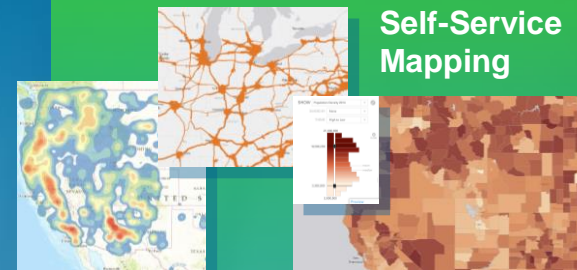
Improved Server Experience



## Providing Mapping, Analytics, and Content

- **Across the Organization**
- **Always Available**
- **Massively Scalable**

## New



## Self-Service Mapping



## Related Tables

## Management



## Improved

- User Experience
- Mapping
- Analytics
- Management
- Security

## Custom Roles



## Certification





# Desktop



- Unlimited Web Mapping
- Data Hosting
- Living Atlas
- Many Apps

... Extending Your Capabilities

# Platform Themes

Geodesign  
Real-Time  
Data Management  
Standards  
Editing  
Content  
Spatial Analysis  
Open Data  
Solution Templates  
Location Analytics  
Developers

Administration  
Imagery  
Performance  
Apps  
Interoperability  
3D  
Usability  
Enterprise Integration  
Security  
Identity  
Mapping  
Big Data  
Cloud





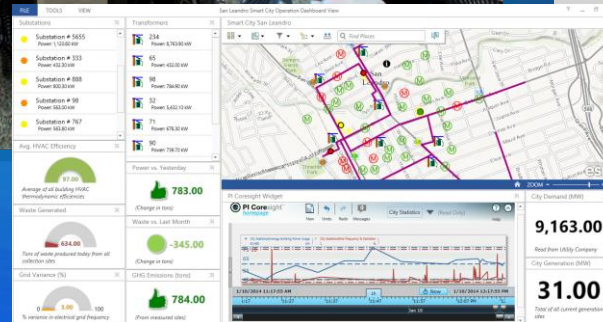
# Real-Time

## Supporting Geographic Monitoring and Alerting

- Many Sensors
- Spatial Analysis
- Stream Service
- Big Data
- OSIssoft Integration



PG&E



OSIssoft Dashboard

Arctic Shipping and Sea Ice



Exact Earth

Big Data

## GeoEvent Extension



"This partnership will bring significant value to our mutual customers, allowing them to visualize and analyze their operations geographically in real-time at unprecedented levels of detail and scale."

*J. Patrick Kennedy – OSIsoft CEO*

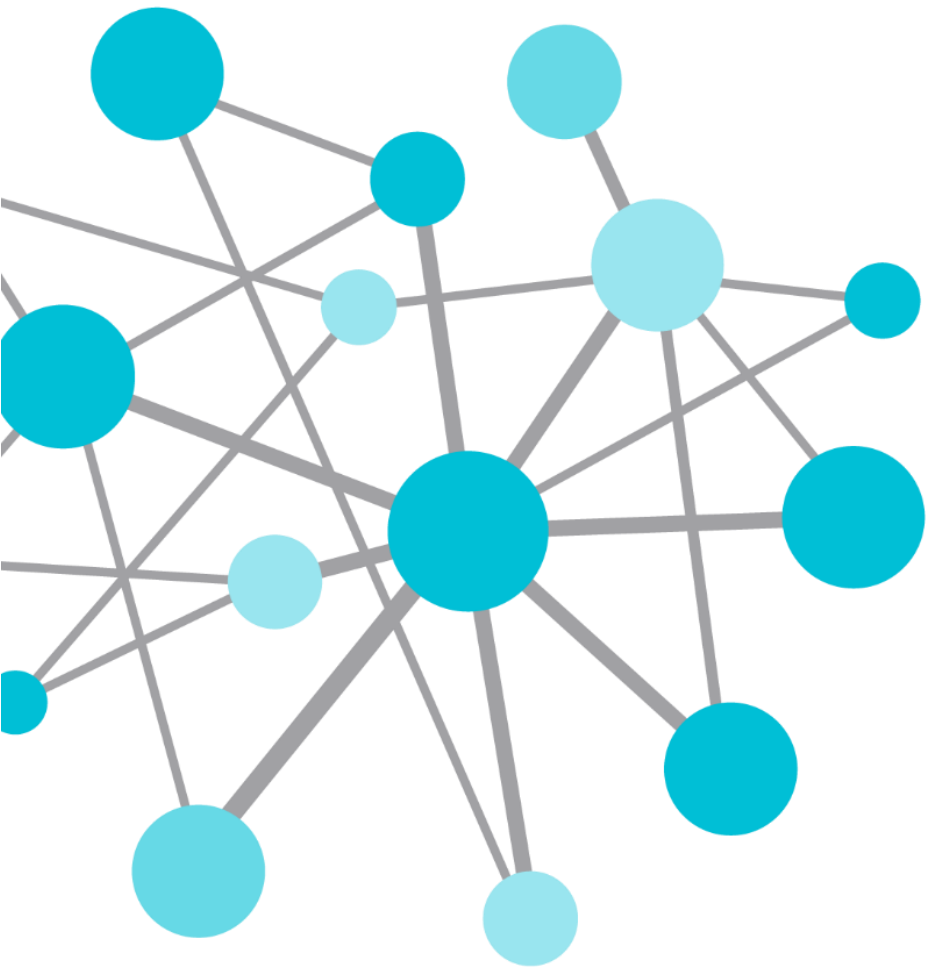


"By bringing together ArcGIS and the PI System, customers will not only know where things are but what they are doing in real-time. By displaying real-time and historical information on a map, our customers will unlock opportunities in their data not previously visible."

*Jack Dangermond – Esri CEO*







# Connecting Space and Time OSIsoft & Esri

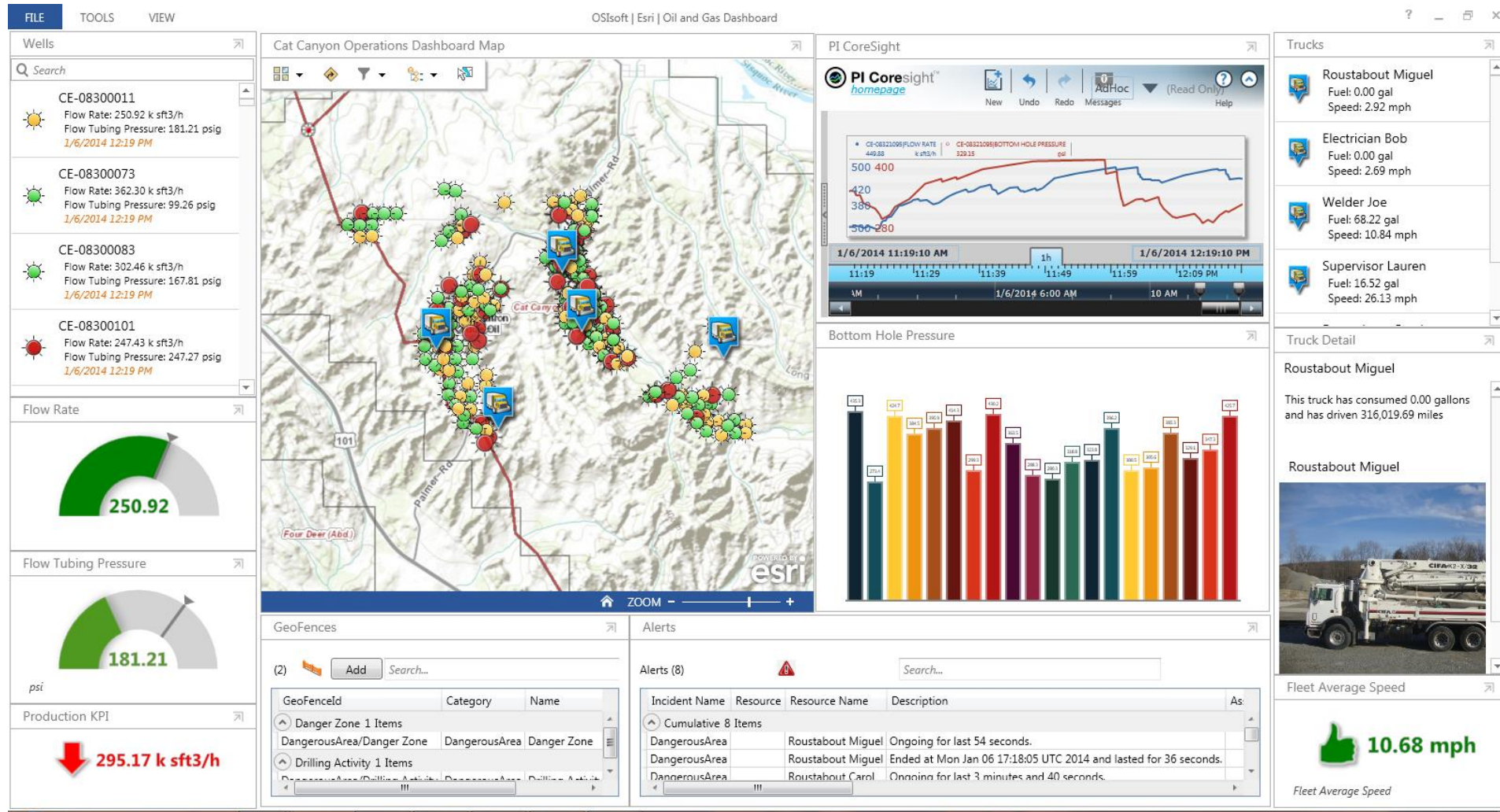


# Which of these describe your need?



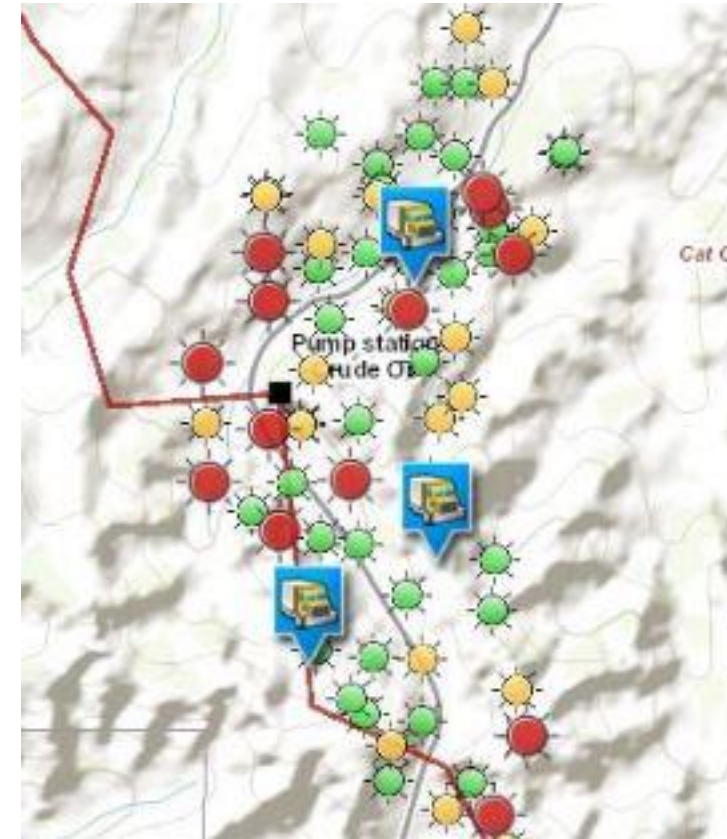
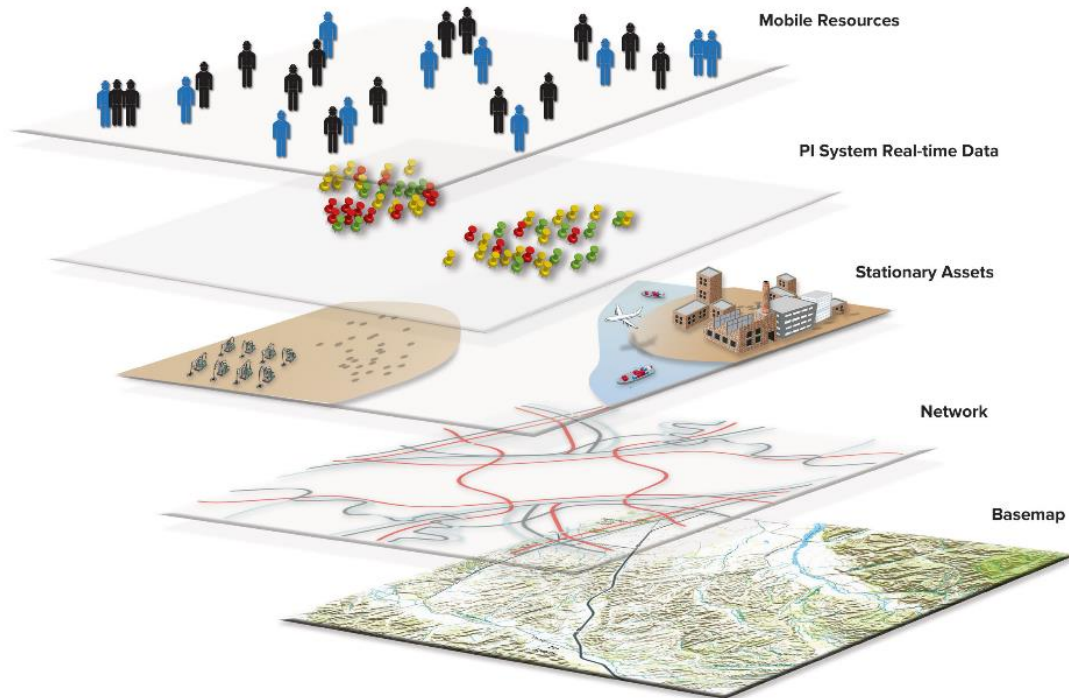
- Operating Engineers & Analysts
- Environmental Health and Safety
- Maintenance Coordinators
- Planners
- Managers & Executives

# Bring your Maps to Life

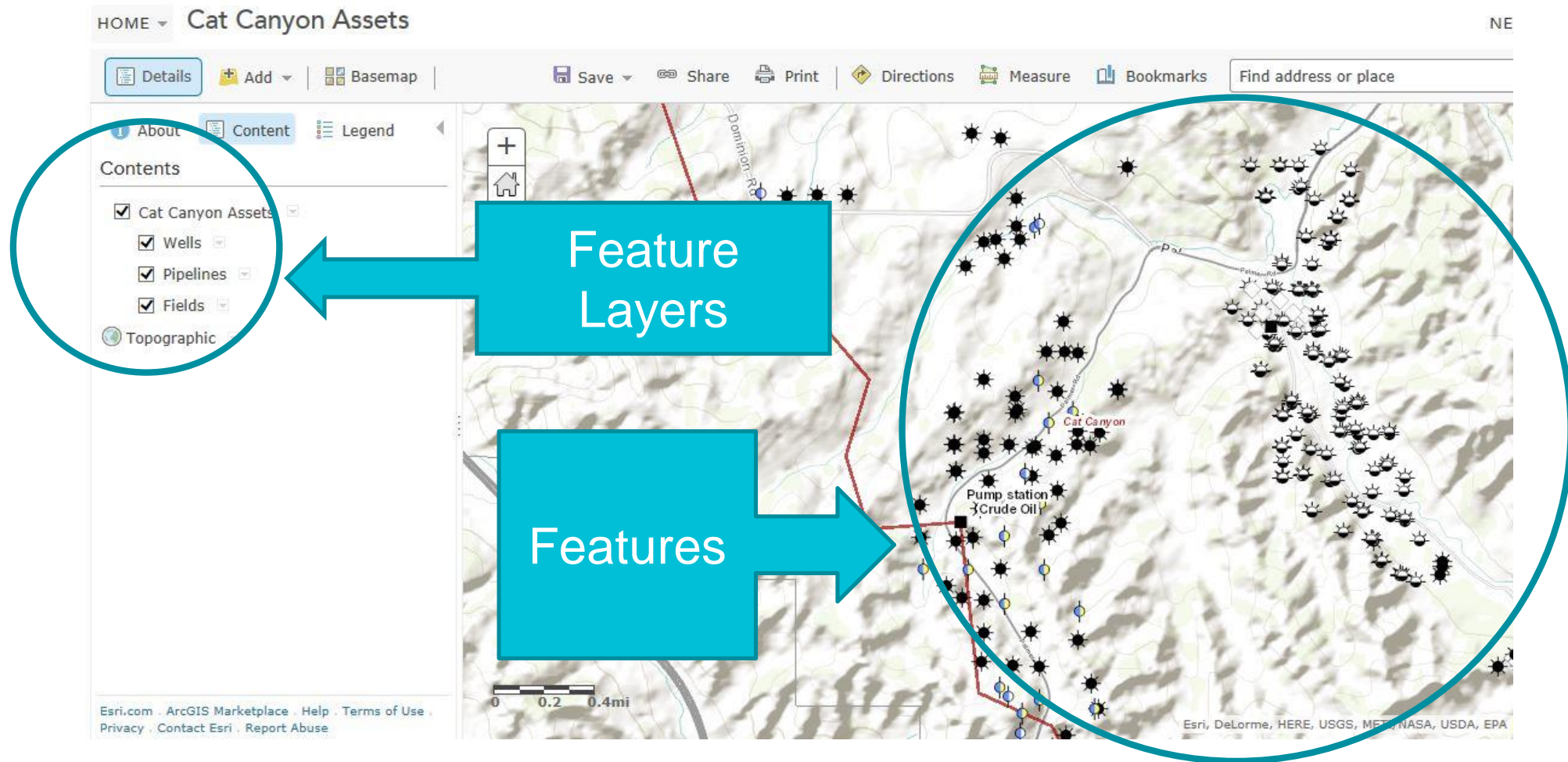




# Why are layers important



# What's on a Map





# What Data is in the PI System?

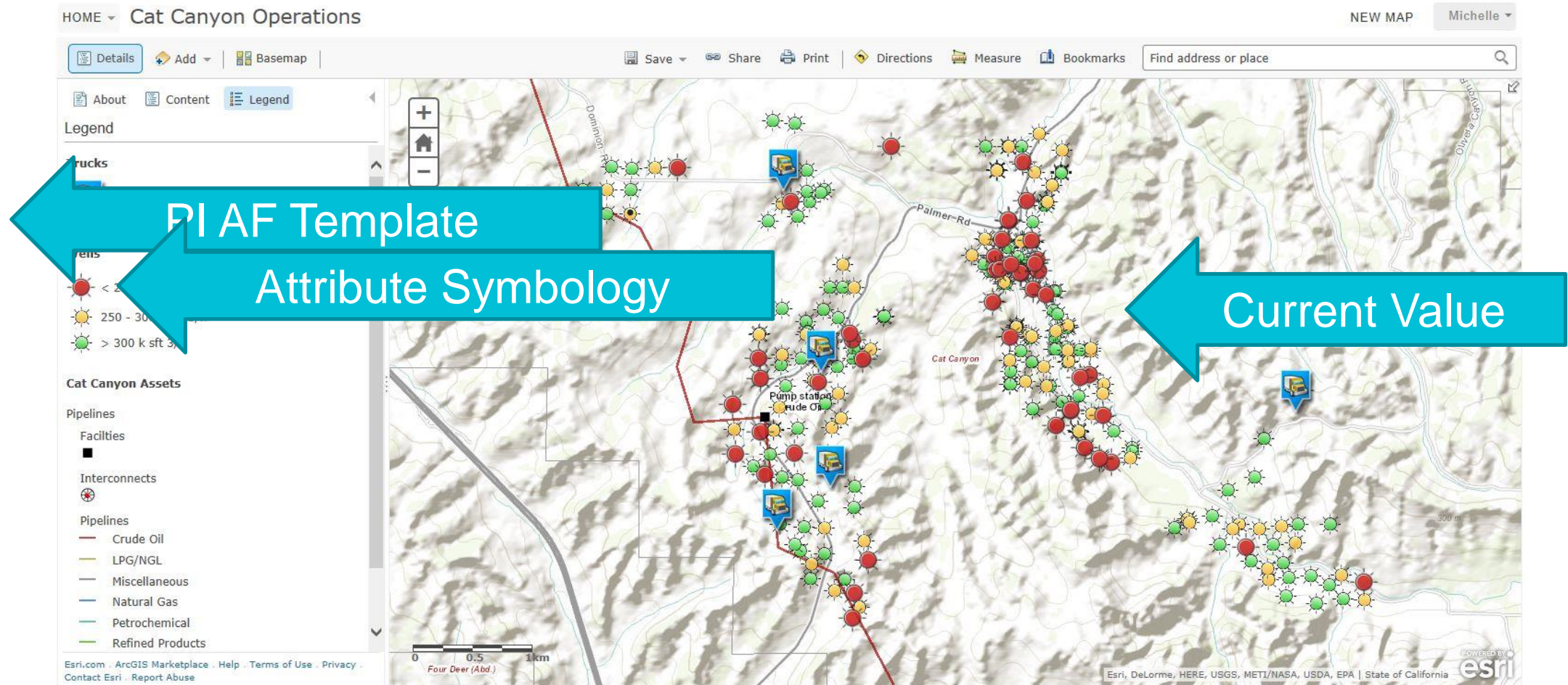
The screenshot shows the PI System interface. On the left, a tree view lists elements under 'Cat Canyon' and 'Bell'. A blue oval highlights this list. In the center, a table displays attributes for element 'CE-08300101'. A blue arrow points from the 'Elements' label to the tree view, and another blue arrow points from the 'Templates' label to the table.

| Name         | Value              |
|--------------|--------------------|
| ActiveWell   | Y                  |
| APINumber    | 08300 101          |
| AssetName    | CE-08300101        |
| Bottom H...  | 304.04745483398    |
| Bottom H...  | 263.12661743164    |
| CountyNa...  | Santa Barbara      |
| FieldName    |                    |
| Flow Rate    |                    |
| Geometry     |                    |
| Geometry...  | -13394080.3099847  |
| Hydrostat... | 333.31280517578125 |
| LeaseName    | Bell               |
| OBJECTID     | 4                  |
| OperatorNa   | Clancy Energy      |
| TypeText     | Oil & Gas          |
| Well_Type    | OG                 |

The screenshot shows the 'Cat Canyon template' configuration window. The 'General' tab is selected, displaying a list of attributes and their values. A blue oval highlights the 'US Oil Well template' in the 'Library' tree view. A blue arrow points from the 'Templates' label to this oval.

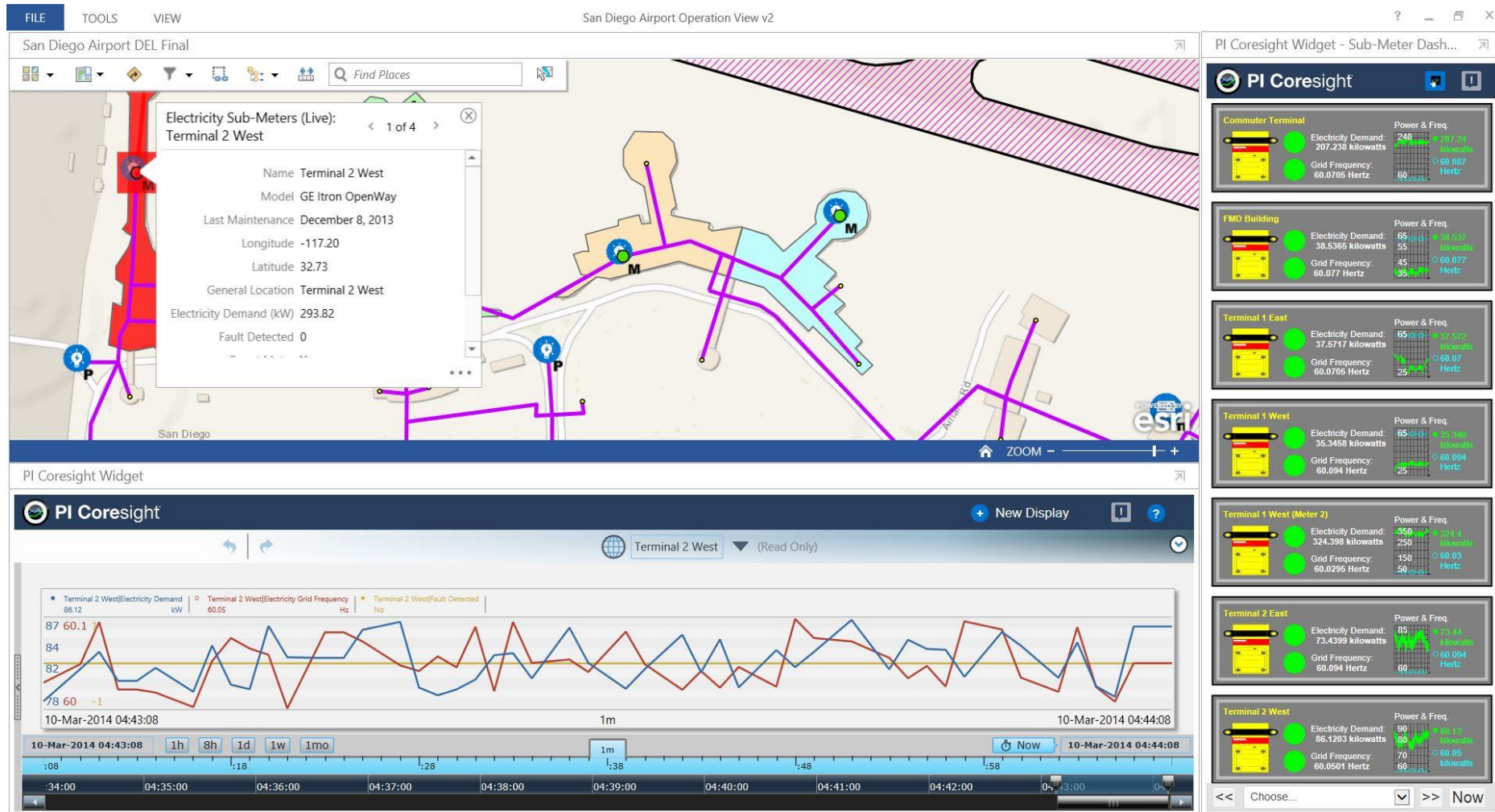
| Name                    | Description |
|-------------------------|-------------|
| ActiveWell              |             |
| APINumber               |             |
| AssetName               |             |
| Bottom Hole Pressure    |             |
| Bottom Hole Temperature |             |
| CountyName              |             |
| FieldName               |             |
| Flow Rate               |             |
| Flow Tubing Pressure    |             |
| GeometryLatitude        |             |
| GeometryLongitude       |             |
| Hydrostatic Head        |             |
| LeaseName               |             |
| OBJECTID                |             |
| OperatorNa              |             |
| TypeText                |             |
| Well_Type               |             |

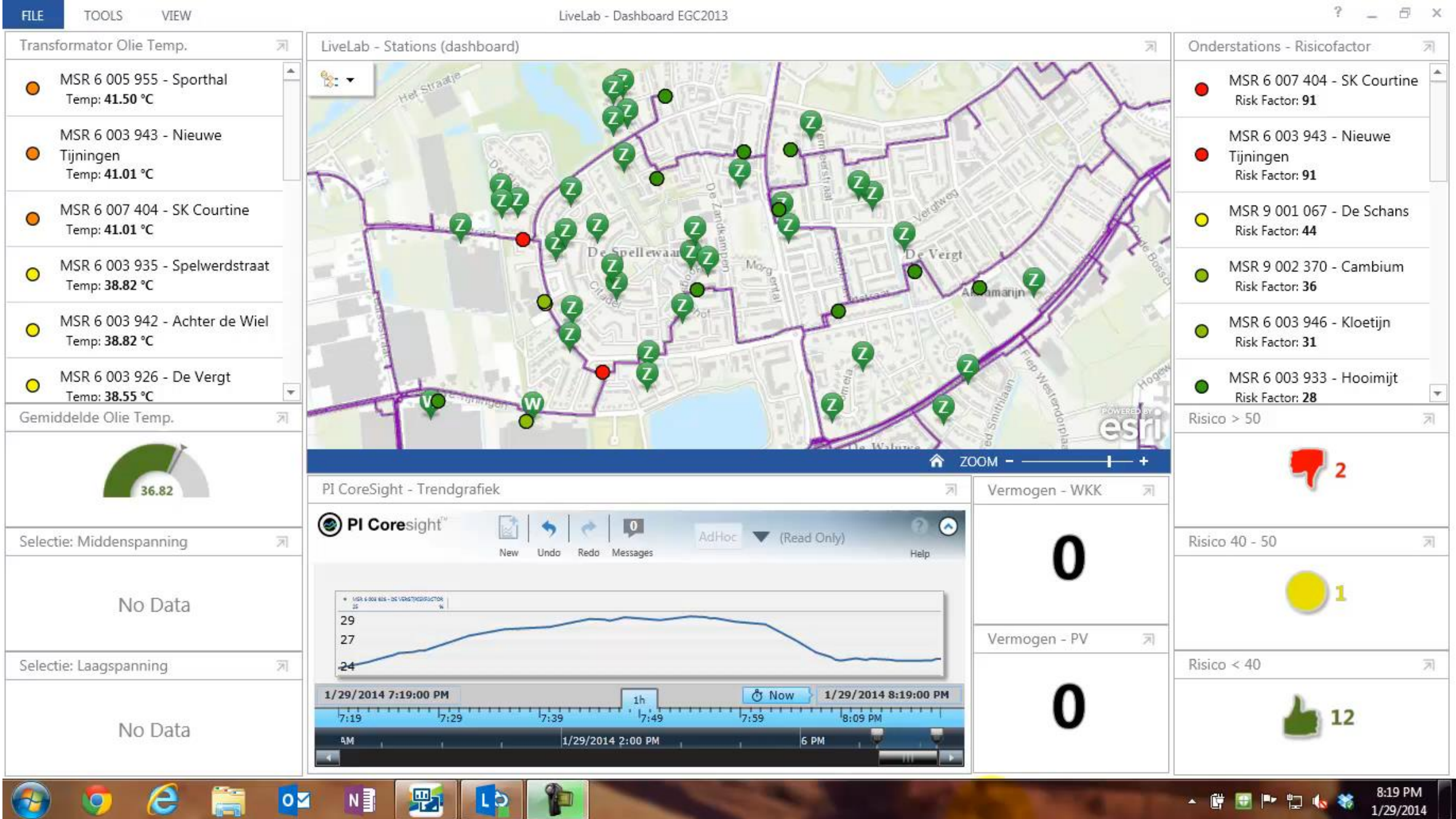
# PI System Data Animates the Map



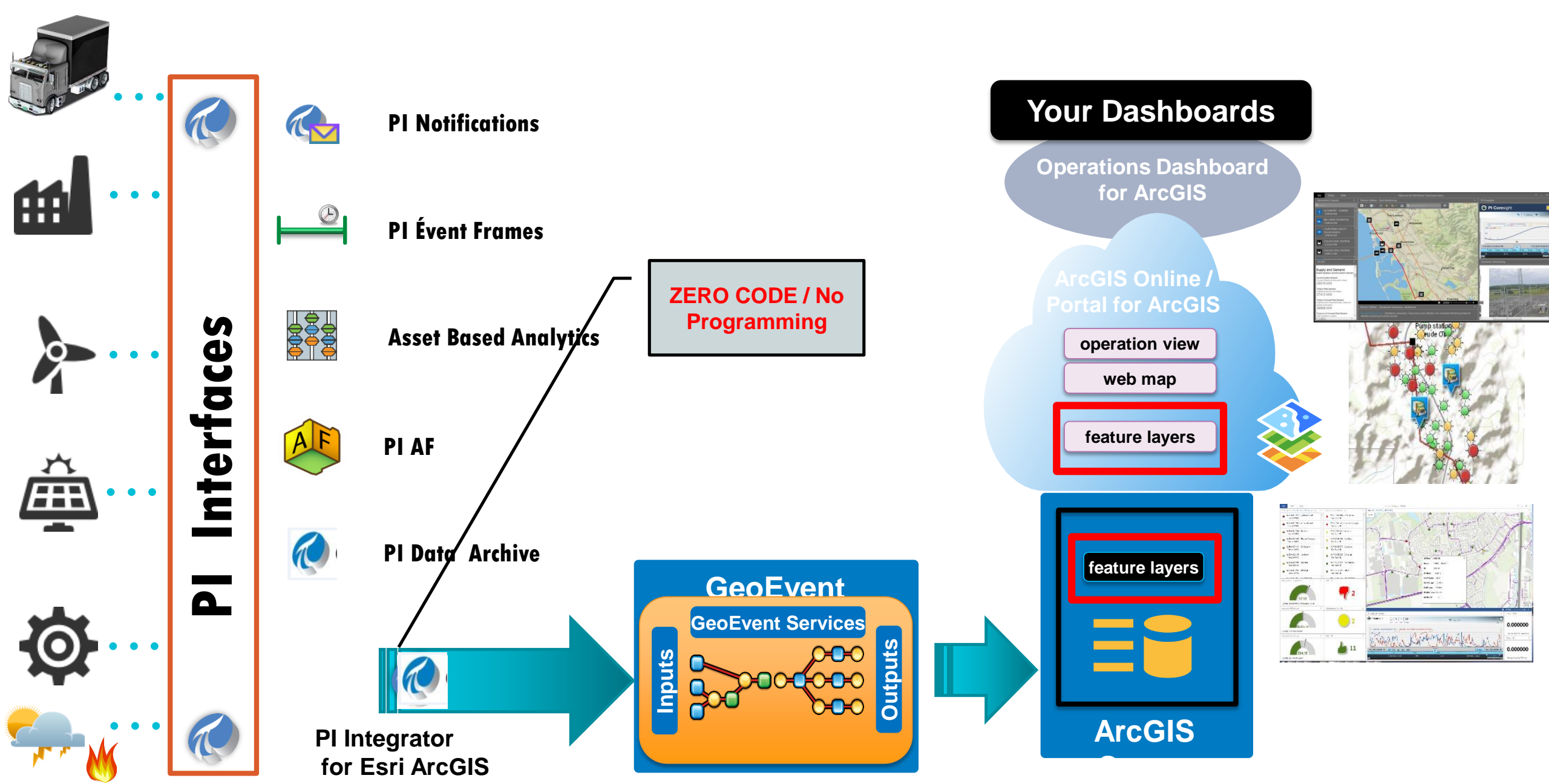


# Esri Operations Dashboard: Mash Up PI Tools with Maps & Widgets







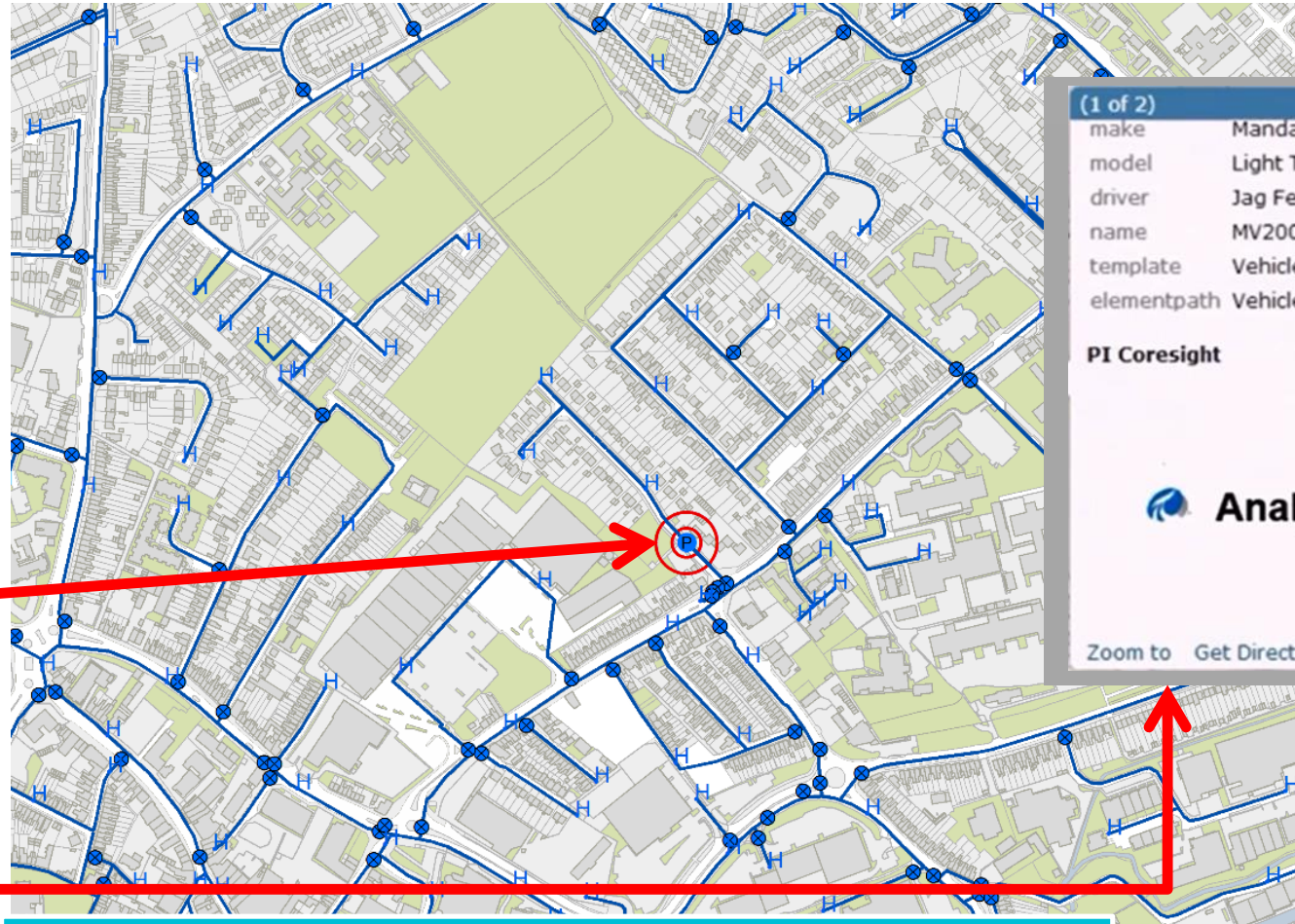


# Integrated Real-time Information

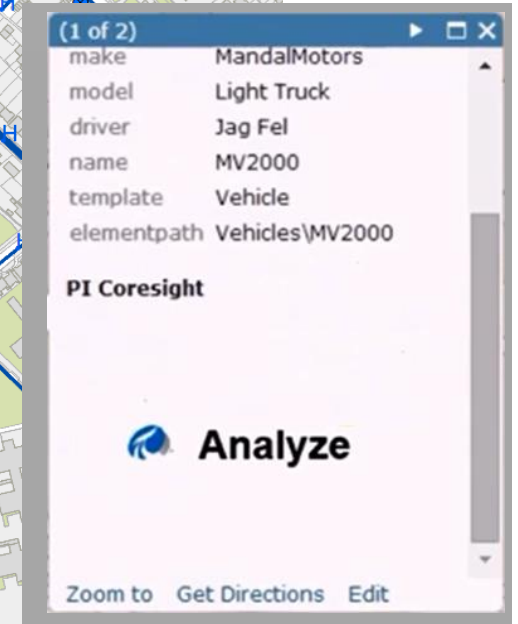


Operator clicks on the Asset on GIS display

Real-time information from the PI System for this Asset is displayed



Further information is available - single click to access





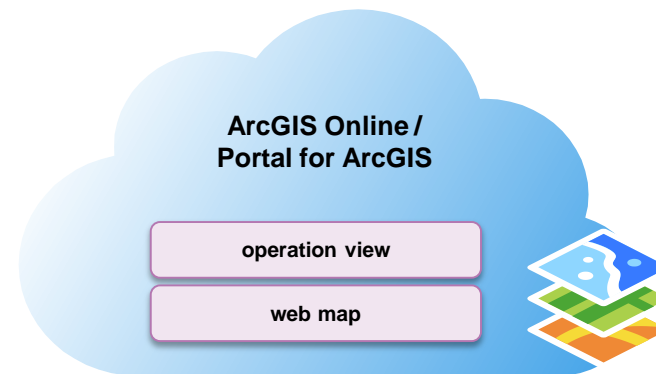
# Esri Map Extractor

- Concepts
  - Map Features can represent a PI AF Element
  - Feature Layers can be represented as PI AF Template
- The Map Extractor builds AF templates and elements from features on a map

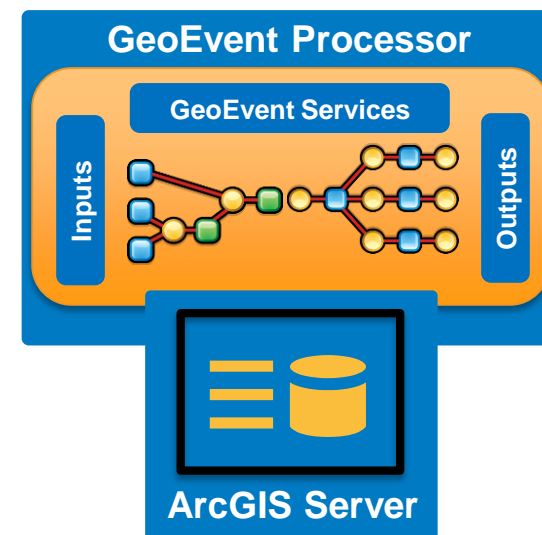
# Cloud Architecture



PI Integrator for  
Esri ArcGIS

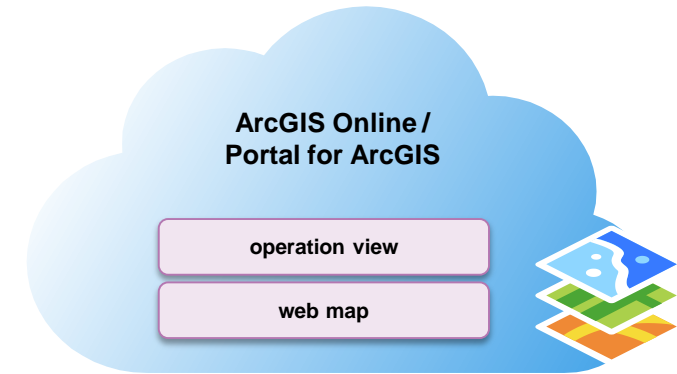


PI System



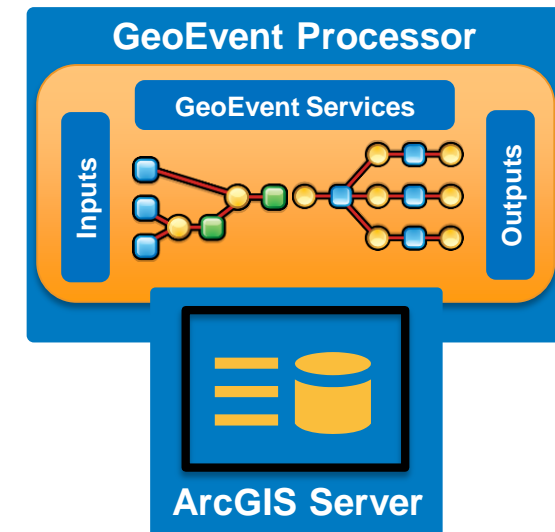


# On Prem Architecture



PI System

PI Integrator for  
Esri ArcGIS

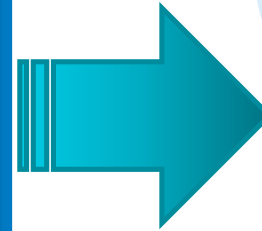


# Requirements

PI Server  
2014

for  
Esri ArcGIS

Geo Event  
Processor  
10.2.1



Your Dashboards

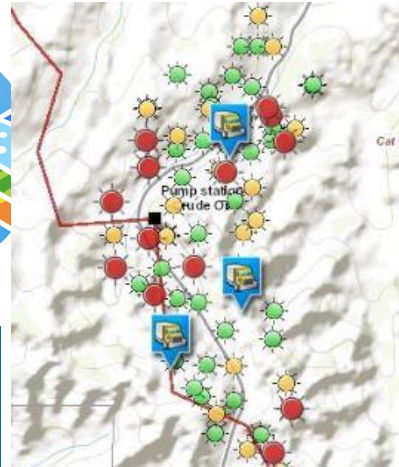
Operations Dashboard  
for ArcGIS

ArcGIS Online /  
Portal for ArcGIS

operation view

web map

feature layers



ArcGIS  
Server  
10.2.1



