



RtReports: A Bristol-Myers Squibb Perspective

Presented by **Anthony Valbrun**

Bristol-Myers Squibb

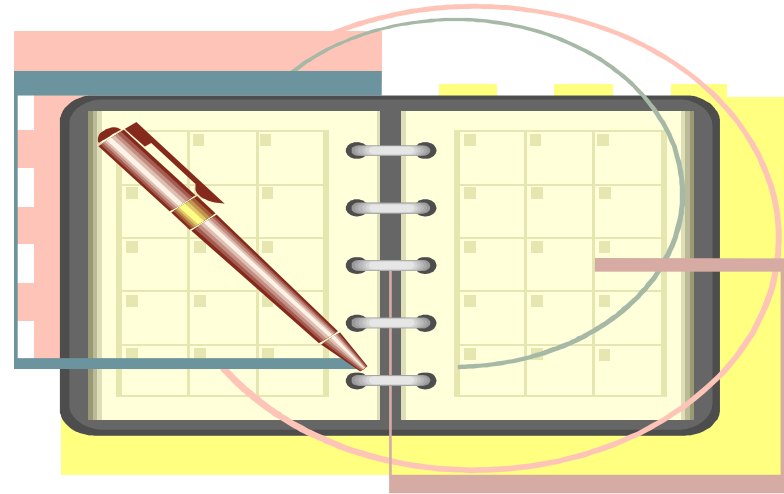
- Bristol-Myers Squibb is a global BioPharma company firmly focused on its [Mission](#) to discover, develop and deliver innovative medicines that help patients prevail over serious diseases.

Key Facts	
Chief Executive Officer	Lamberto Andreotti
Headquarters:	New York City
Business	Biopharmaceuticals
Web Address	www.bms.com
NYSE Listing	BMY
Net Sales	\$17.6 billion in 2012
R&D Investment	\$3.9 billion in 2012
Key Products	ABILIFY® (aripiprazole) , ATRIPLA® (efavirenz / emtricitabine / tenofovir disoproxil fumarate) , BARACLUDE® (entecavir) , ELIQUIS® (apixaban) , ERBITUX® (cetuximab) , IXEMPRA® (ixabepilone) , KOMBIGLYZE™ (saxagliptin and metformin) , NULOJIX® (belatacept) , ORENCIA® (abatacept) , ONGLYZA® (saxagliptin) , PLAVIX® (clopidogrel bisulfate) , REYATAZ® (atazanavir sulfate) , SPRYCEL® (dasatinib) , SUSTIVA® (efavirenz) , YERVOY® (ipilimumab)



Agenda

- Implementation History
- Benefits
- Pain Points
- Opportunities



Our Challenges Before RtReports

- QA reviewed batch records in the control room
- Hundreds of records were unnecessarily reviewed
- Information was transcribed many times
- QA needed an electronic tool for reviewing the batch records remotely



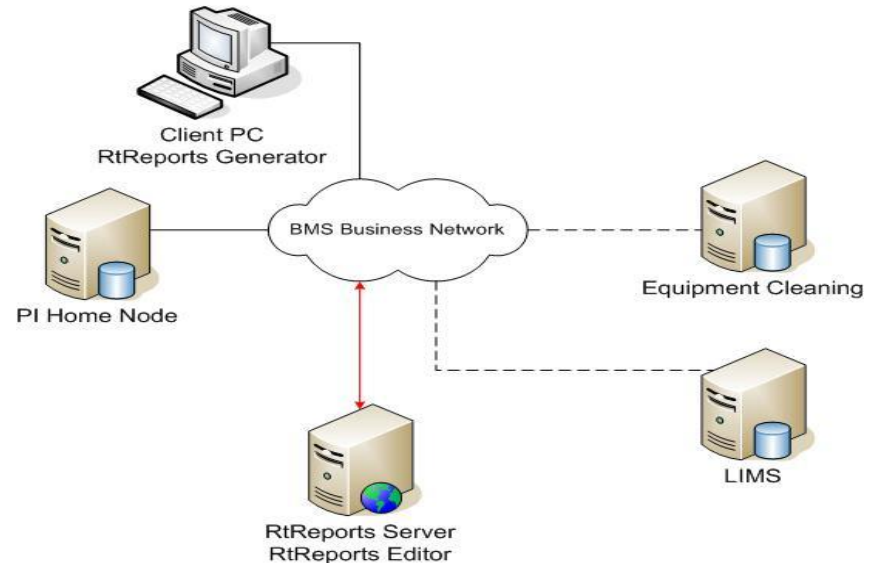
OSIsoft to the Rescue

- RtReports Early adopter program
- Project took two years for implementation
- Multiple challenges were overcome
 - PI Interface for Event File data
- System implemented in 2004



Current State

- Critical piece of our operations
- Used across six pilot plants and clinical manufacturing
 - Recently implemented at one of our manufacturing site in Cruiserath, Ireland
- Reporting on both PI System data and external data sources
- Running version 3.3



Benefits

- Review time performance increase
 - Batch review time down 80%
 - Only review relevant information
 - About 10% of the batch records produced
 - Eliminate documentation errors
 - No more transcription
 - No more chasing signatures
 - One stop shopping for batch related data (LIMS, Equipment Cleaning, etc)



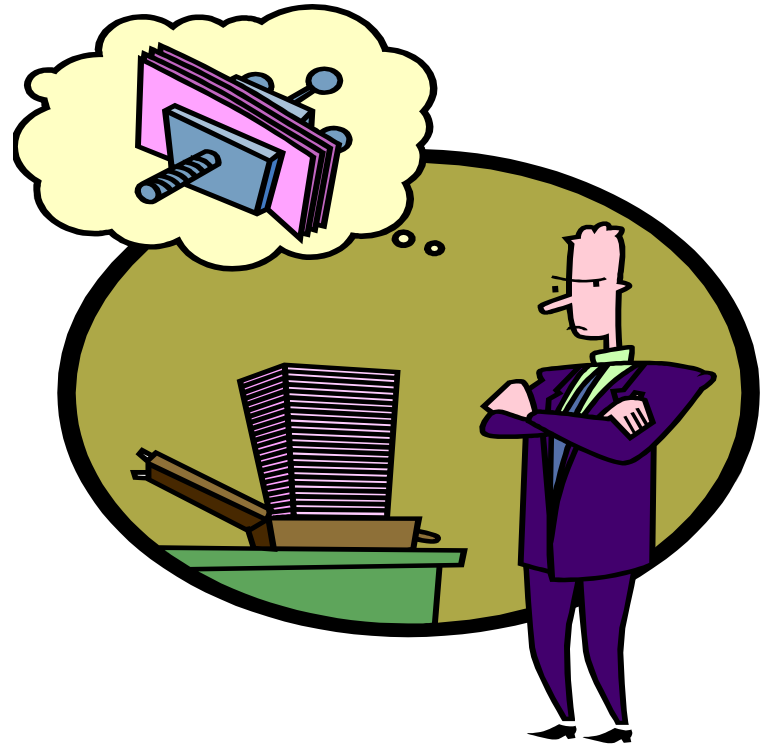
Flexibility

- Ability to have data streaming live
- Pull information while batching
- Accessible from home
- Flexible template used across six pilot plants



Cultural change

- From batch report to Executed batch end review
- 100 pages down from ~700 pages
- Summarized the exceptions that QA needs to review in the first 10 pages
- Exception based batch level approval
- QA helps design the template



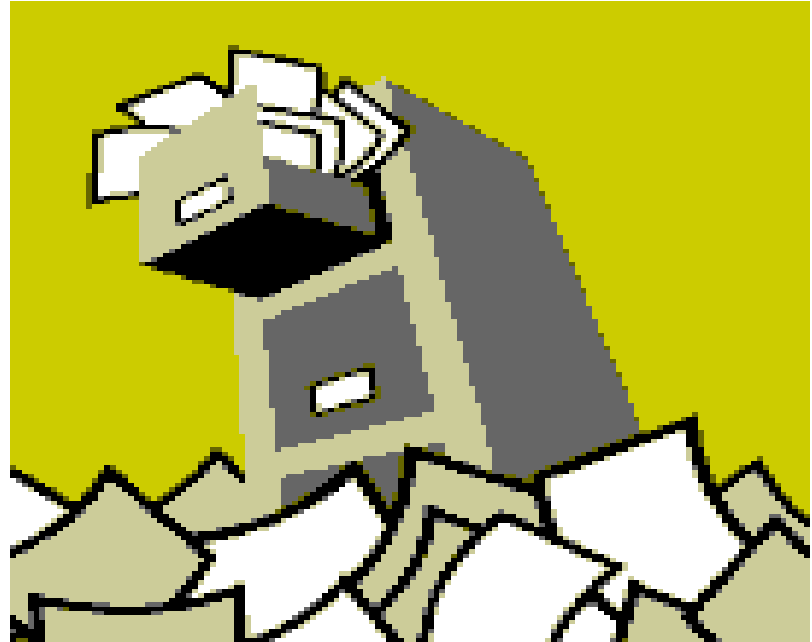
Pain Points

- Performance
 - Considerable amount of time for report page to load
 - Reports takes a long time to generate
 - Impacts workflow for some reviews
 - Forced logoff is a nuisance
- Printing crash frequently
 - Needs to kill acrobat and Microsoft Word on RtReports server
 - PDF printing configuration very complex



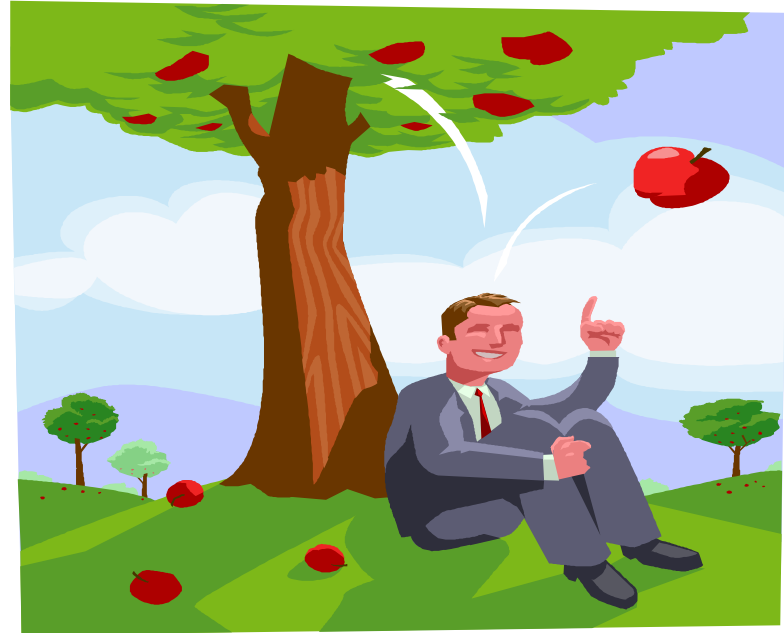
Pain Points (cont)

- Cache Management
 - Big reports clog up cache
 - Manual flush of cache is often necessary
 - Specially to update external data
- Steep learning curve for template development



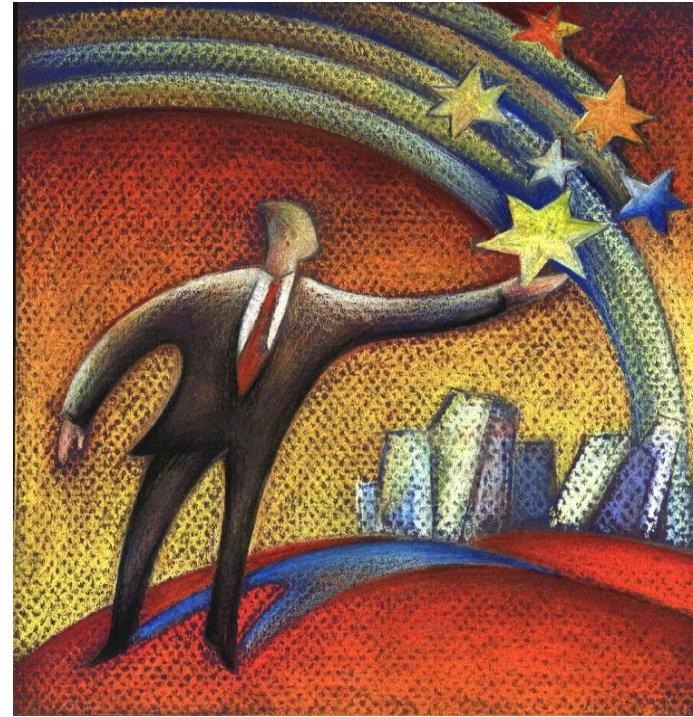
Low Hanging Fruits Opportunities

- Data export
- Ability to download journal data to other tools such as Excel, Matlab or a web service
- Email notifications for next level of approval
- Reports generation scheduling
- Optional signature
- Reject a batch
- Access to RtReports metadata for metrics
 - Approval time/reviewers/Etc



Reaching for the Stars

- RtReports Campaign aware
- Multiple batch summary report
- Ad hoc reporting capability for a nimble pharmaceutical industry
- Contextual comments
 - Ability to add targeted comments to a specific paragraph
- Draft comments workflow



Optimal template

- PI Event Frames ready
- Smooth integration with PI Interface for Emerson DeltaV
- Report phase parameter events in time-order rather than grouping by parameter name



Commitment

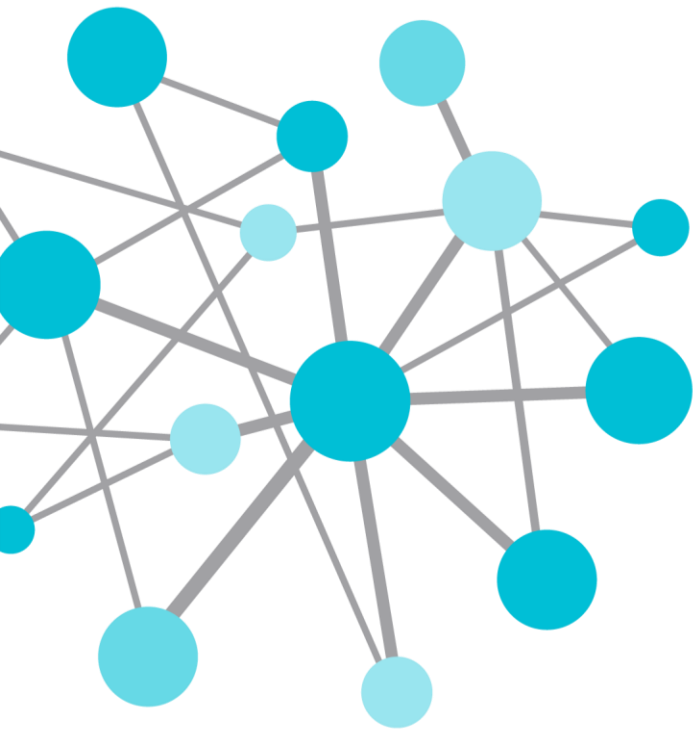
- RtReports is BMS official batch end review application
 - Early adopter
 - Big investment
 - Critical to our operation
- Continued partnership with OSIsoft to enhance the product



RtReports Overview – backup slide

- Template-Based Enterprise Reporting System
- Produces configurable and repeatable reports without programming
- Stores the templates centrally
- Uses a web-based interface
- Provides reports for real-time and historical data
- Provides reports for batches, time ranges or PI Asset Framework (PI AF) cases
- Provides access to PI System data and external data such as relational databases and web services
- Meets sign-off and auditing requirements for electronic reports





THANK
YOU

Brought to you by  **OSIsoft.**