



# Enablement and Standardization of Advanced Process Data Technologies with an Enterprise Agreement

Presented by **Nick Alexiades** - Sanofi

# About Sanofi

- Sanofi, a diversified global healthcare leader, discovers, develops, and distributes therapeutic solutions to improve the lives of everyone.
- €34.9 billion in Global Sales (2012)
- 100,000 Global Employees



# About Sanofi

- Key Therapeutic Areas

- Animal Health
- Cardiovascular Disease
- Degenerative Diseases
- Diabetes
- Immune-Mediated Diseases
- Infectious Diseases
- Multiple Sclerosis
- Oncology
- Ophthalmology
- Rare Diseases
- Vaccines

- Subsidiaries

- **Sanofi Pasteur**
- **Genzyme**
- Shantha Biotechnics
- Chattem
- Zentiva
- Medley
- Nichi-Iko
- Merial



# About the Presenter

- BS in BME
- MBA in Pharmaceutical Technology Management
- 10 years Biotech/Pharma/cGxP experience
- 5 years of total PI Experience
- 1 year w/ Genzyme
- Past:
  - Managed EA & supported PI Rollout to 9 Global sites
- Current:
  - Site System Owner
  - EA Lead
  - Enterprise (APEX ePI) System Owner
  - Solution Center IS Project Lead

# History of PI System at Sanofi

- Legacy Historian: RAPID
  - Migration of legacy data complete at 1 site (2 others are “in flight”)
- Standalone PI System implemented at 5 sites & 2 sites with a Factory Talk embedded PI System
  - 6 different architectures, security models & administration procedures
  - The Framingham campus alone has over 10 distinct PI Systems
    - SDLC Environments (Development, Test & Production Systems)
    - Business Process Separation (Production, Process Development & APEX)

# Sanofi ONE-IS Strategic Direction

## Current Situation

- Siloes, multiple sources of information.
- Federated processes, data, and systems.
- Complex and fragmented landscape.
- Same or similar applications sourced from multiple vendors.

## A new global shop floor architecture will be designed to:

- Consolidate legacy enterprise and common plant solutions by driving towards Sanofi standard enterprise platforms.
- Improve integration across solution pillars & standardize process design across business units.
- Drive sustainable compliance into all solutions.

# “Shop Floor” Global Solution Center

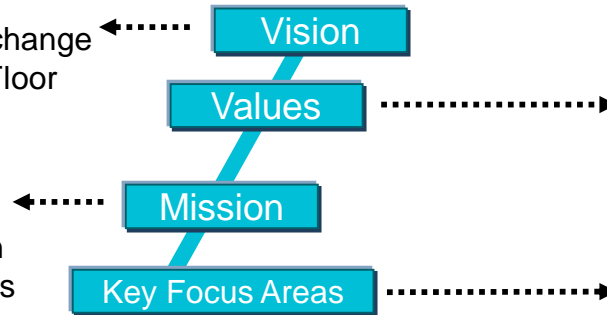
## Vision

To be recognized as a strategic partner of change and business transformation for the Shop Floor systems & processes.

## Mission

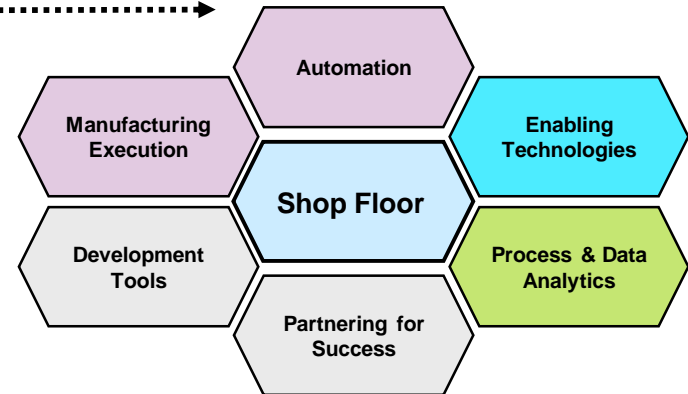
Architect a comprehensive Global Shop Floor system design that fosters integration across solution pillars, standardizes process design across business units, and drives sustainable compliance.

- 1 Implement Standard Shop Floor Systems across Sanofi.**
- 2 Orchestrate, Transform & Harmonize Shop Floor business processes.**
- 3 Improve Product Quality and Operational Efficiencies.**
- 4 Consolidate and Simplify the Shop Floor IT Landscape.**



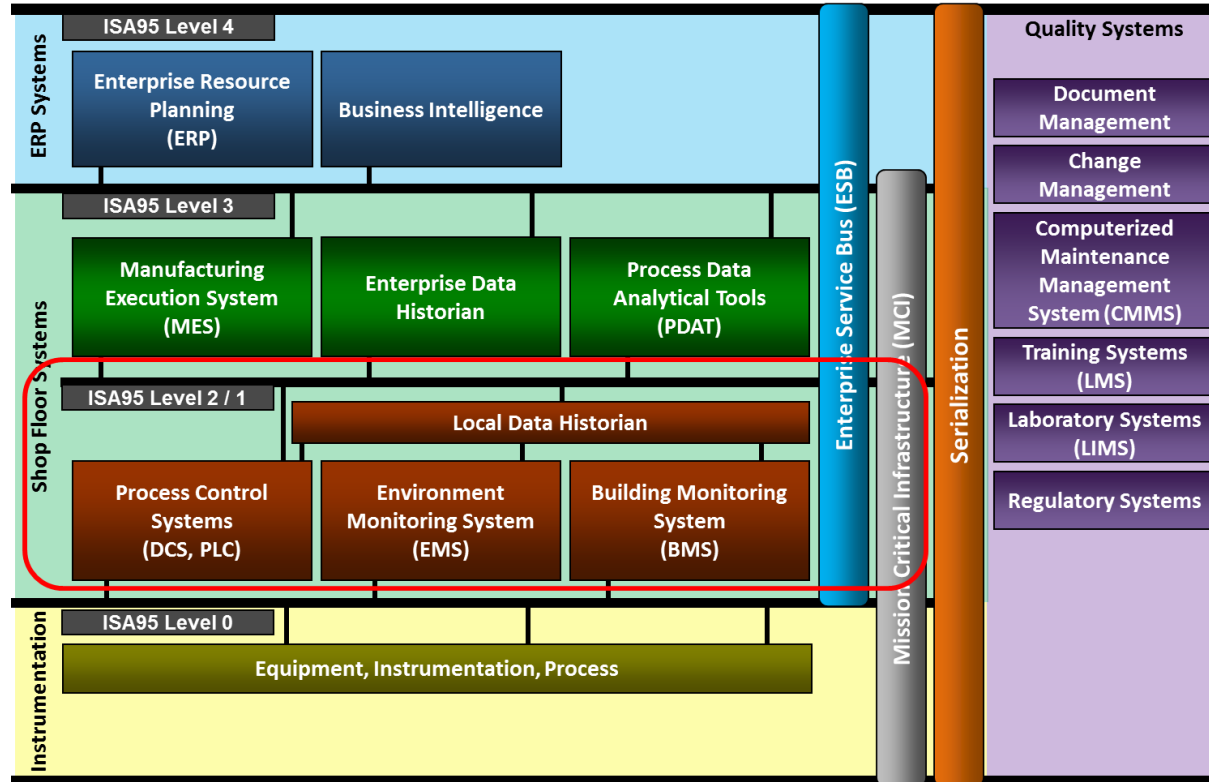
## Values

Innovation  
Confidence  
Solidarity  
Respect  
Integrity



# Global Solution Center

## Integrated Production Management System Domains

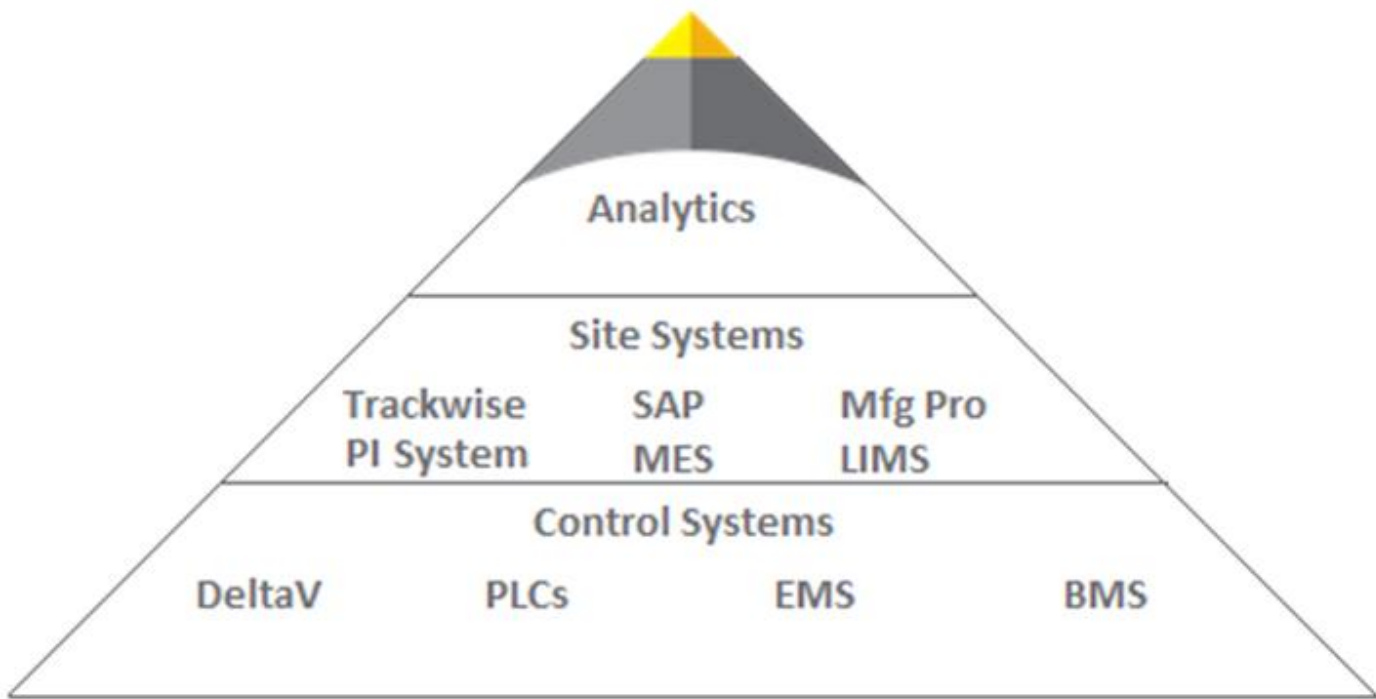




# Enterprise Agreement (EA) Status at Sanofi

- EA became effective in August 2013
  - Currently includes 7 named sites
- Role of the EA
  - Leverage the Center of Excellence (CoE) to establish best practices and a core centralized solution reducing the implementation and validation burden at the sites
  - Simplify the licensing structure at existing and future sites
  - Leverage the licensing benefits and CoE knowledge to provide a centralized PI System aggregating data from multiple sites
  - Provide additional functionality through the availability of software that was not previously purchased or available

# Process Data Analytics Tools (PDAT)



# Apex Target Business Processes

## Average Business v.s. Compliance Impact

### Top Business Processes

- **Deviation Closure**

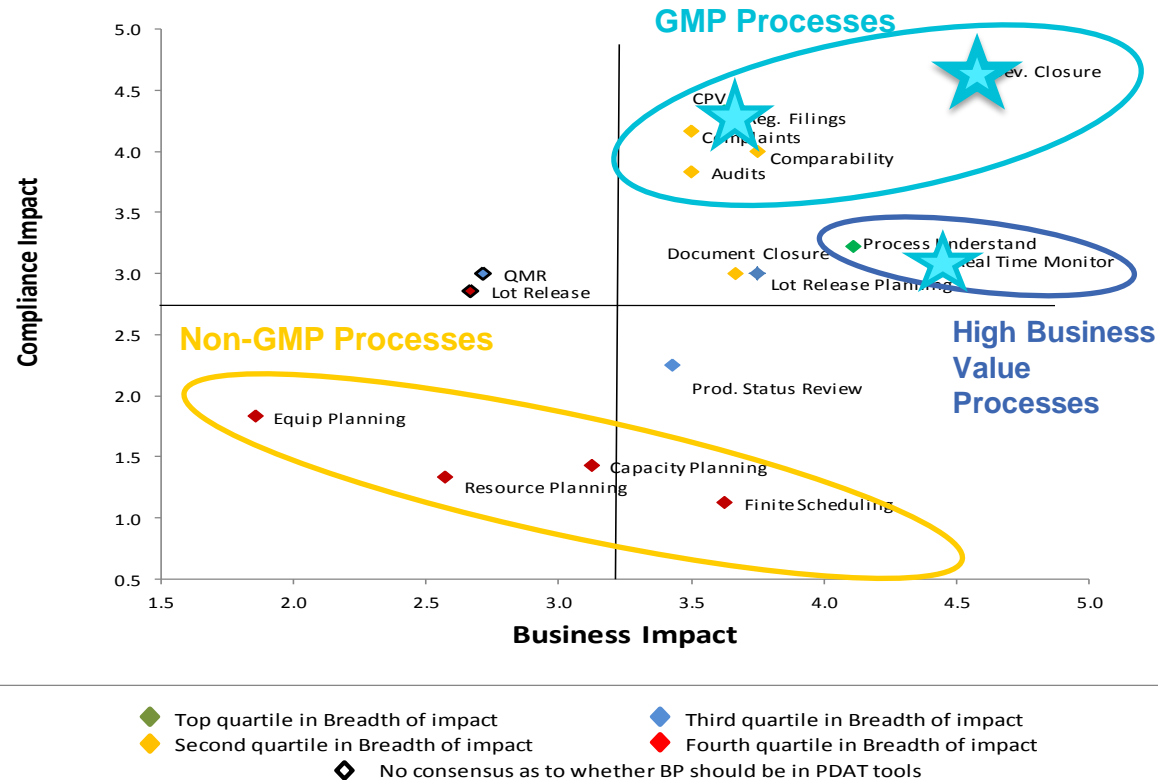
Analyze batch data across process steps, with or without calculations and from different source systems (e.g. MDE, LIMS, MES, ERP, etc.)

- **Continuous Process Verification**

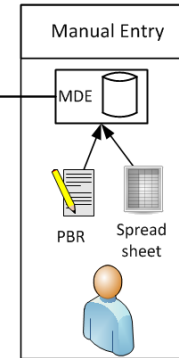
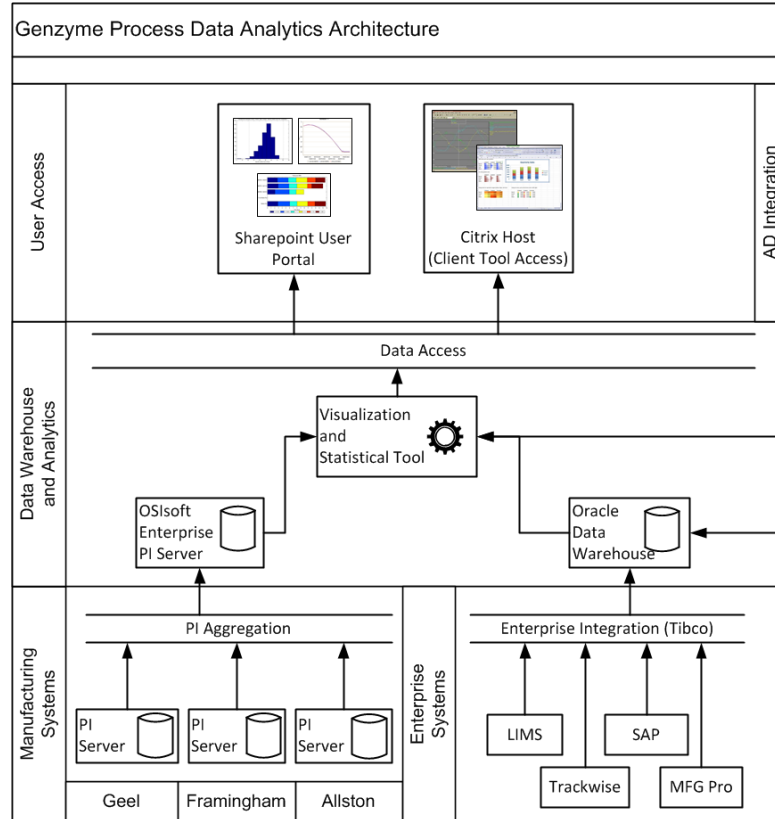
SPC trending of CPPs and CQAs

- **Real Time Monitoring**

Routine Monitoring of on-line parameters



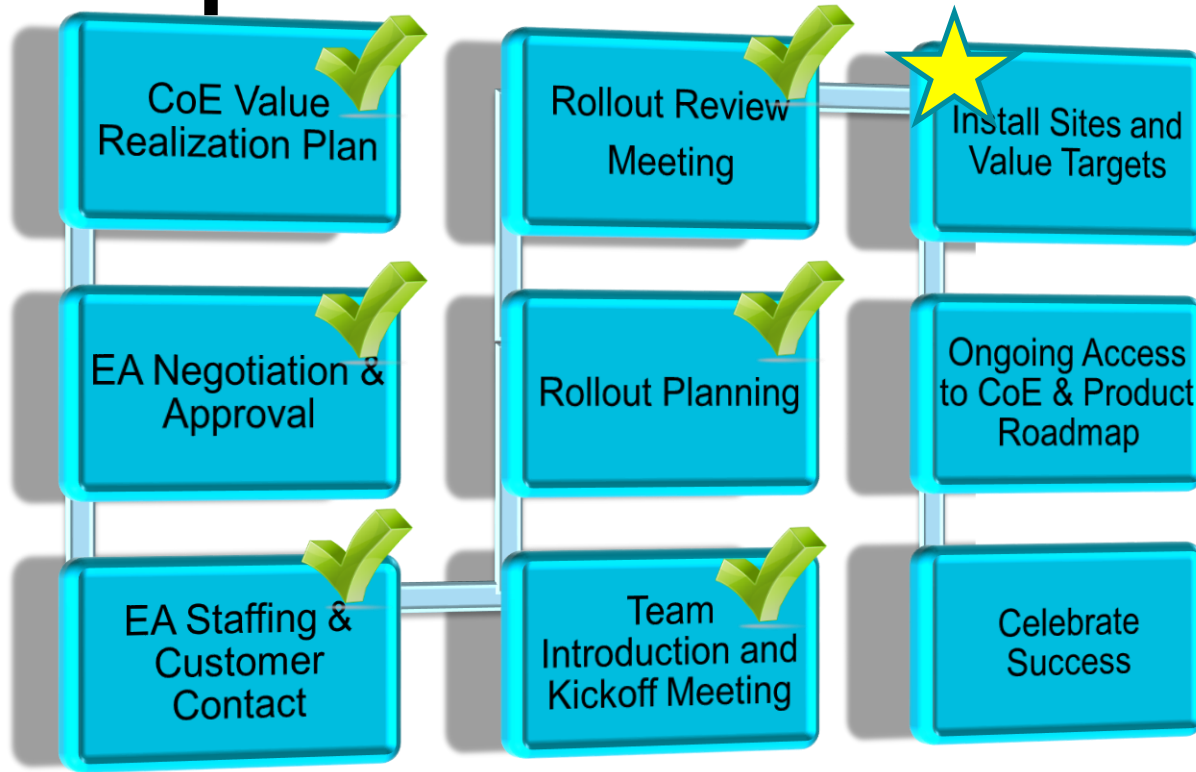
# Apex Solution Architecture



# PI System in the Apex Program

- What are we doing today
  - Connection to Statistical Tools (Statistica)
  - Real time process monitoring and alerting
  - SPC for Critical Process Parameters
  - Process and Equipment Modeling / aliases in PI AF
  - User Tools (PI WebParts, PI DataLink, PI ProcessBook)
- Items to work on
  - PI Event Frames for Events/Alarms
  - PI Batch Context

# Next Steps with EA



# Establishing the Rollout Plan

- Identifying the current state of site PI Systems
  - Current architecture and versions
  - Source Systems
  - Successes and Pain Points
- Identifying Short, Medium & Long term milestones
- Identifying the standard future state

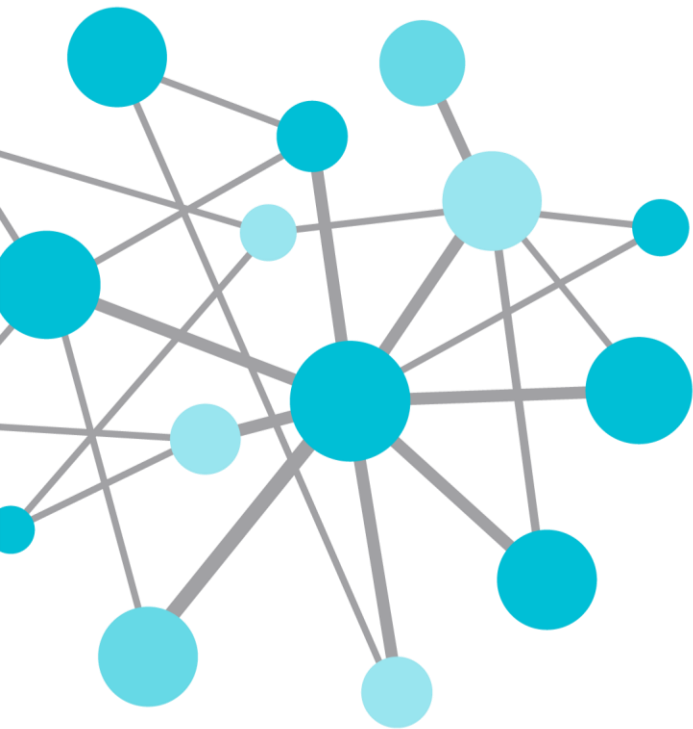
# Core Solution Development

- Establish a certification lab to develop & test a core system
  - Reduce the amount of testing and environments a site needs to maintain
  - Provide improved support and knowledge sharing
  - Core System Components
    - PI Collective
    - PI AF Server
    - PI Notifications & PI ACE
    - PI Client Tools
    - Redundant PI Interfaces to Core Systems (DeltaV, Factory Talk, EBI, PASX, etc.)
    - Managed PI



# Deployment Kits

- Documentation
  - Requirement and Design Specifications
  - Validation and Install Protocols
  - SOPs
  - Training Curriculum
  - Best Practice Guidance
- Installation
  - Standard Software
  - Validated Automated Configuration
    - Piconfig, .bat & .ini files
- Canned Modules
  - PI AF Templates
  - Report Templates
  - APEX Prerequisites



THANK  
YOU

Brought to you by  **OSIsoft.**