

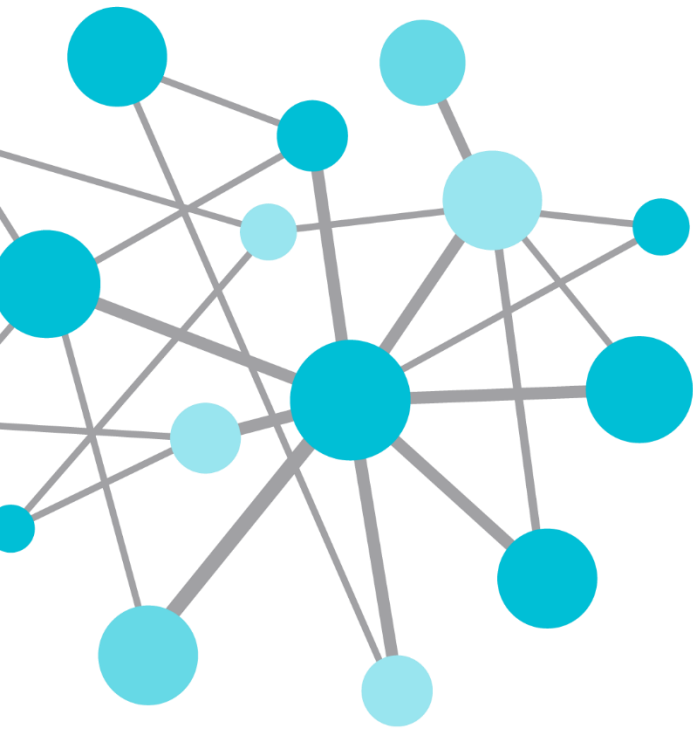


OSIsoft.

USERS 2014 CONFERENCE

The **Power** of **Data**

DECISION READY IN REAL-TIME



PI Coresight 2014 gives you PI ProcessBook in your pocket

Presented by **Tom LeBay**, Product Manager OSIssoft LLC

What is PI Coresight?

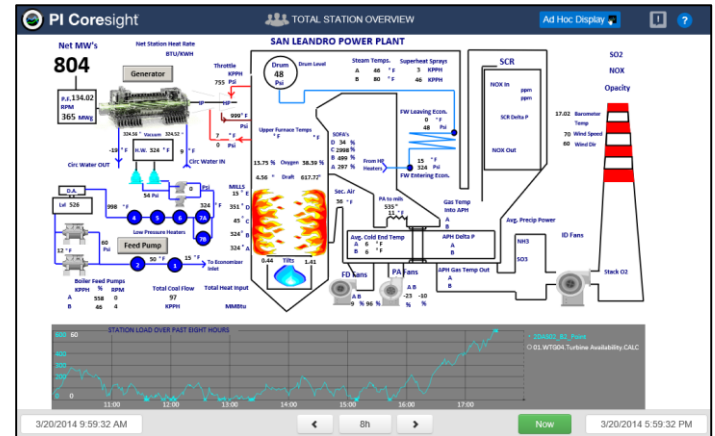
A web-based product for:

- Ad-hoc analysis
- Quick investigation
- Collaboration
- Rapid deployment



PI Coresight 2014

Ad hoc analysis + authored displays



PI Coresight 2014 – key features

- **PI ProcessBook display viewing**
- **Mobile website**
- **Organize Displays**
- **Application driven displays and navigation**

PI Coresight 2014

PI ProcessBook display viewing

- Displays viewable on any device
- Time bar manipulation
- Zoom and Pan
- Pop-up trend
- Button links



San Leandro Generator

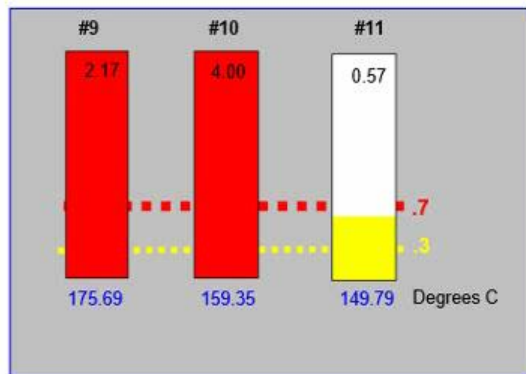
Station OvrVw

Feed Pump OvrVw

415 MW gross

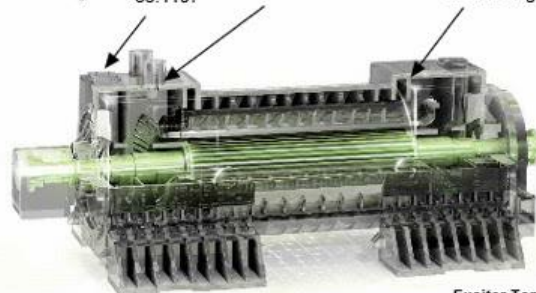


Bearing Vibration
Mils, Pk-PK



Coolers

Gas Entering:	41.0442	43.2864	47.163 deg C
Leaving	33.1197	30.7904	30.815 deg C



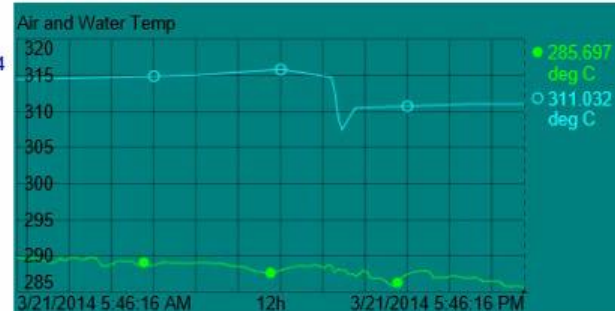
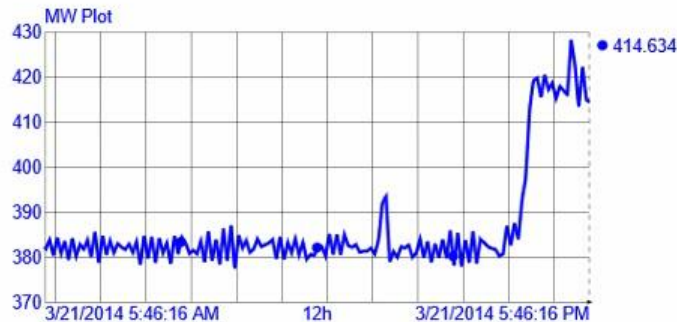
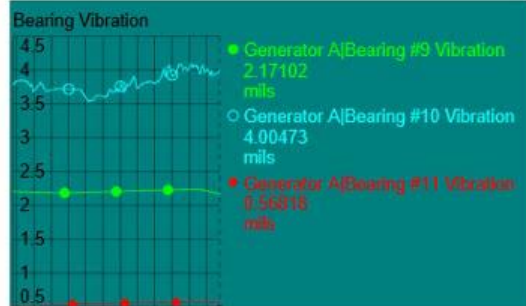
Hydrogen Summary

Pressure	58.45
Purity	99.74
Temp	100.25

Phase X Current 10004.75 A	Phase Y Current 10120.26 A
Phase Z Current 9837.21 A	Phase X Voltage 114.22

Exciter Temps (deg C)

Field Amps	2927.26	Gross Vars	89.45	Net Vars	84.24	Hot	41.04	Cold	33.12
Field Volts	225.75	Gross Vars 2	89.77	Net Vars 2	82.82		43.29		30.79



Difference between web and native viewing

Not supportable on the web:

- VBA script
- ActiveX Controls

Different interaction:

- One time range
- Element Relative Displays with URL

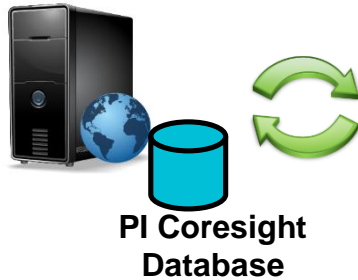
Not in PI Coresight 2014:

- Unsupported Symbols
 - Batch View
 - SQC Chart
 - XY Plot
 - Logarithmic scale
 - Regression line on a trend
- ODBC datasets

Easily Make Displays Available

- Save PI ProcessBook file in PDI or SVG format
- Automatically organized by folder structure
- Displays are automatically imported and/or updated

PI Coresight 2014



Import Folder



PI ProcessBook Displays

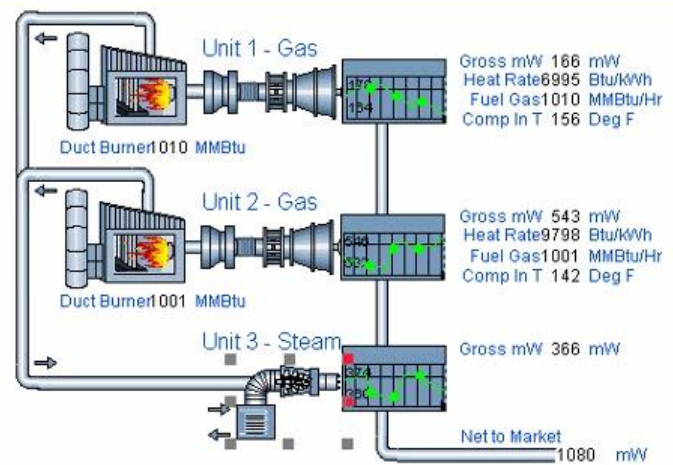


PI ProcessBook - [Area 1 Turbines]

File Edit View Insert Tools Draw Arrange Window Help

3/19/2014 3/21/2014

Turbine Overview



Ambient Conditions:	
Temperature	92.4
Barometric Pressure	29.3
Humidity	35.7

Fuel Rates (MMBtu)	
Site Fuel Energy	3
Fuel Use Today	27
Fuel Use Yesterday	43

Heat Rates (Btu / kWh)	
Gross Heat Rate	9
Net Heat Rate	10
Steam Adj. Heat Rate	6

Plant Output (mW)	
Gross Power	1
Parasitic Load	1
Net Power	1

Unit 1 - Gas

Gross mW 166 mW
 Heat Rate 6995 Btu/kWh
 Fuel Gas 1010 MMBtu/Hr
 Comp In T 156 Deg F

Unit 2 - Gas

Gross mW 543 mW
 Heat Rate 9798 Btu/kWh
 Fuel Gas 1001 MMBtu/Hr
 Comp In T 142 Deg F

Unit 3 - Steam

Gross mW 366 mW

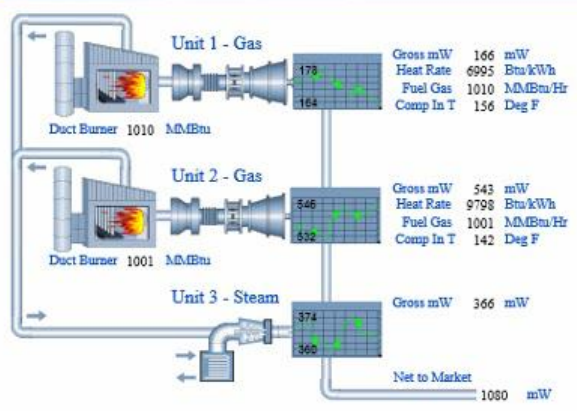
Net to Market 1080 mW

PI Coresight - Internet Explorer

http://cs2014beta/Core PI Coresight

PI Coresight

Turbine Overview



Ambient Conditions	
Temperature	92.4 Deg F
Barometric Pressure	29.3 in Hg
Humidity	35.7 %

Fuel Rates (MMBtu)	
Site Fuel Energy	3900
Fuel Use Today	27300
Fuel Use Yesterday	43400

Heat Rates (Btu / kWh)	
Gross Heat Rate	9975
Net Heat Rate	10100
Steam Adj. Heat Rate	6750

Plant Output (mW)	
Gross Power	1154
Parasitic Load	73.4
Net Power	1080

Unit 1 - Gas

Gross mW 166 mW
 Heat Rate 6995 Btu/kWh
 Fuel Gas 1010 MMBtu/Hr
 Comp In T 156 Deg F

Unit 2 - Gas

Gross mW 543 mW
 Heat Rate 9798 Btu/kWh
 Fuel Gas 1001 MMBtu/Hr
 Comp In T 142 Deg F

Unit 3 - Steam

Gross mW 366 mW

Net to Market 1080 mW

- Wichita Cracking
- Wichita Distilling
- Wichita Extruding

Element Path
\\DFPIAF\OS\soft Enterprises CS\Wichita\Extruding Process\Pump-244
3/21/2014 6:58:36 PM

Element Name
Pump-244

Pump-244|motor amps
29.0779 A

Pump-244|power
109.861 kWh/ton



<http://74.217.101.218/coresight/#/P8Displays/19?CurrentElement=\\DFPIAF\OS\soft Enterprises CS\Wichita\Extruding Proce...>

3/21/2014 10:58:36 AM

< 8h >

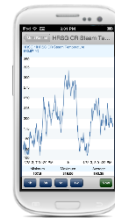
Now

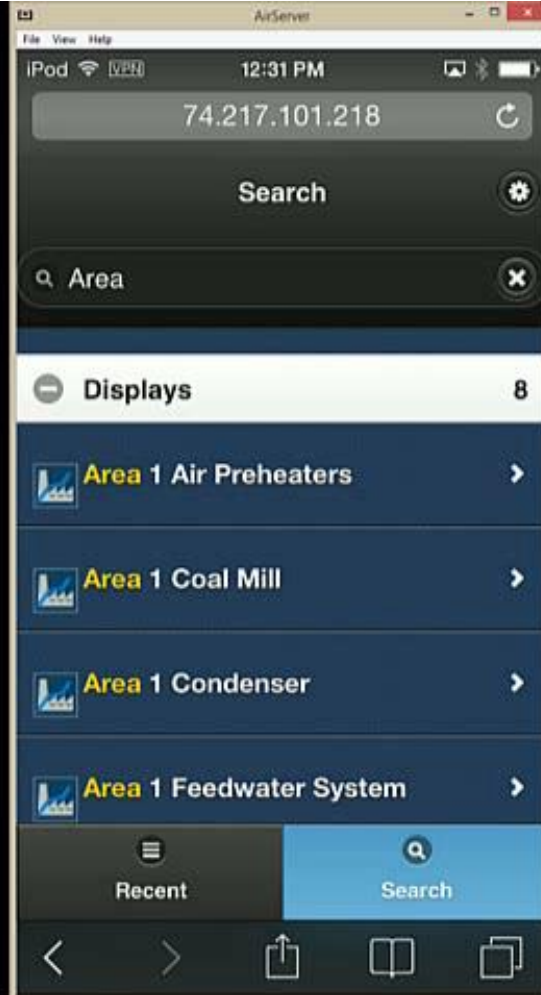
3/21/2014 6:58:36 PM

PI Coresight on mobile devices

Quickly Find and Use PI Data using Small Form Factor Devices

- Fast and easy access to PI System data
- View PI ProcessBook displays
- Designed for small screens
- Viewable on any device





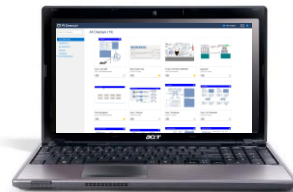
What works where?

Desktop browser
only



Displays built
in PI Coresight

Any modern browser



Homepage



Mobile site






PB Displays

Native Apps



Apple iPad
iPhone

2013	2014		2015		FUTURE
	1H	2H	1H	2H	See PI System Roadmap on Tech Support site for updates
 PI Coresight 2013 <i>Related Events</i>		 PI Coresight 2014 <i>PI ProcessBook Display Viewing Mobile web site</i>	 PI Coresight 2015 <i>Future Data support Overlay trend and asset comparison table</i>		

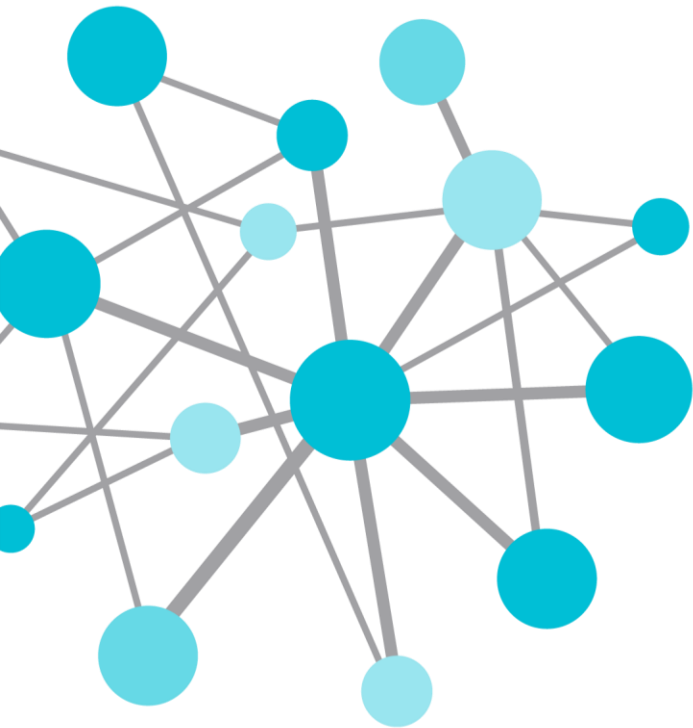
NOTE: Future dates & plans are subject to change. Last Updated: 03-25-2014

Tom LeBay

tlebay@osisoft.com

Product Manager

OSIsoft, LLC



THANK
YOU

Brought to you by  **OSIsoft.**