



MES Integration Discussion

Presented by **Chris Nelson**
Mike Purcell

Agenda

- Review from Paris
- Update Since Paris
- Joining the Working Group
- Discussion

REVIEW

- The Relationship between MES & PI System

What MES Does Well

- Weigh & Dispense
- Managing Equipment States
- Electronic Work Instructions (EWI)
- Collecting and Archiving Manual Data
- Electronic Batch Records (EBR)
- Source for Genealogy
- Manufacturing Order Workflow Approvals



What MES Does Not Do Well

- Master Recipe Authoring / Sharing
 - Generally not linked to Batch Execution System
 - Means dual-management of recipes
- Real-time & Historical Data
 - MES not designed for large data volumes
 - MES typically has summarized data collection/archiving
 - Limited visibility of “other data”
- Ad-Hoc Analysis & Reporting
 - MES generally designed with “canned” Reports
- Source System Connectivity
 - Generally MES implemented via “OPC”



MES / PI System Values

- Increased reliability and efficiency of Product Execution
- Captures Manual Data
- Valuable Source of Recipe / Batch Context
- Platform for Recipe Standardization
- Genealogy



- Highly Available Infrastructure for Real-Time Data Abstraction
- Expands MES Connectivity & Reduces Integration Costs
- Long-Term Historization of MES Data
- Real-Time Calcs/Analytics to be leveraged by MES
- Expands Analysis & Reporting Capabilities of MES

MES Value to
PI System

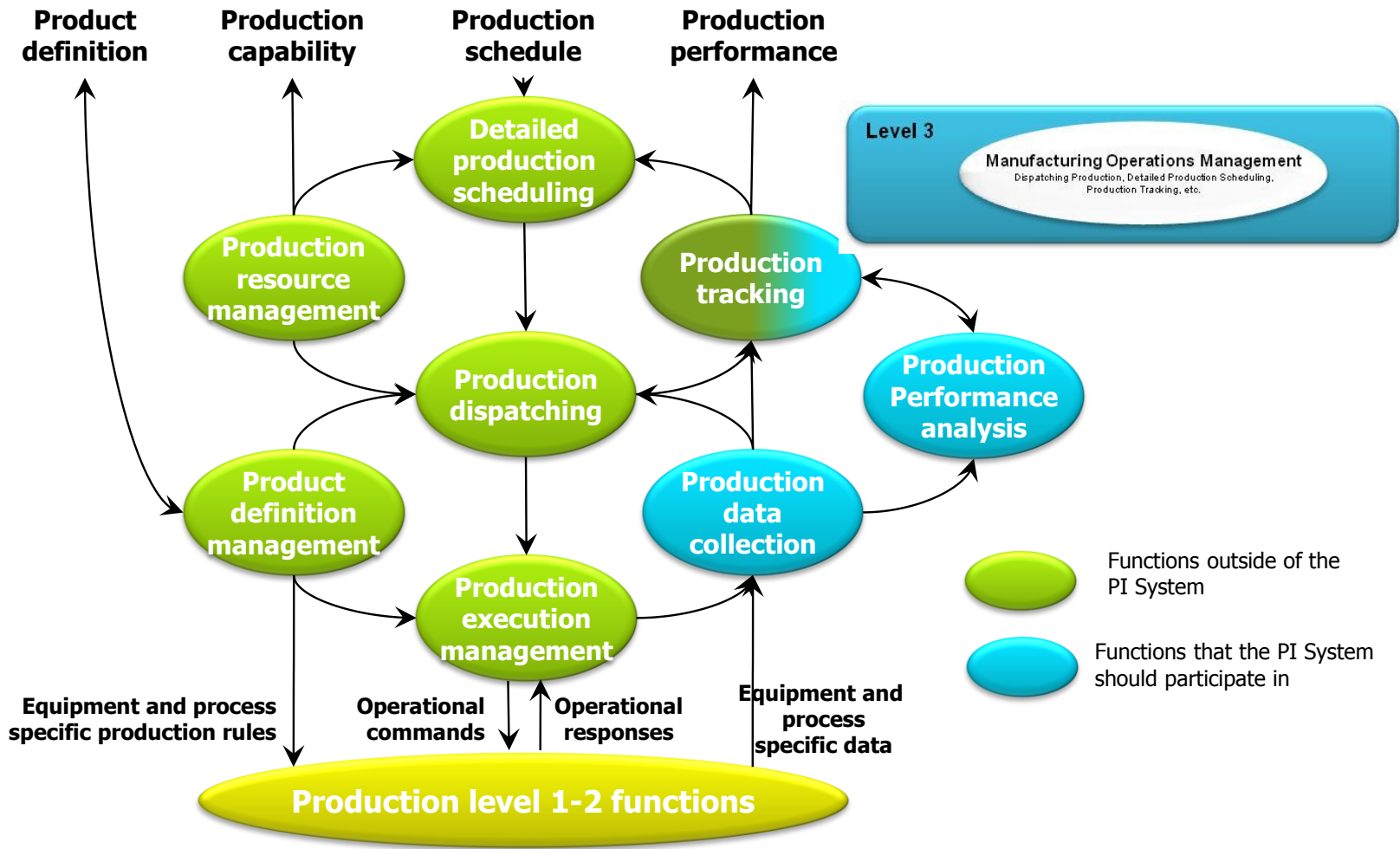


PI System
Value to MES



Evaluation of MES systems needs to include a data infrastructure component and an overall manufacturing data management strategy.

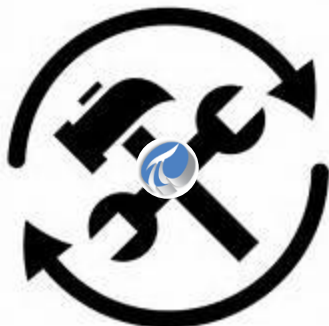
S95 Level 3



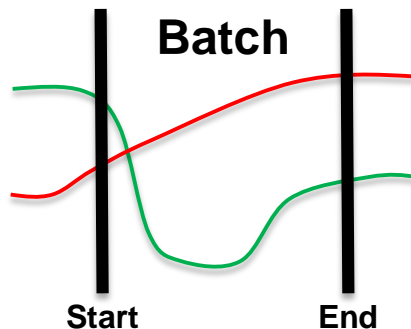
Update

Why do batch customers use PI Interfaces for BES & MES?

Automatically
Configure
PI System



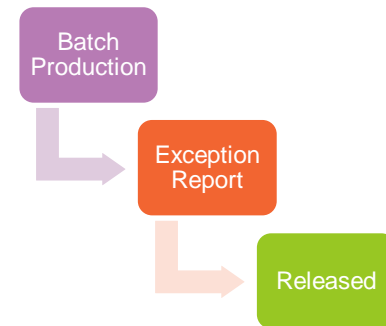
View Process
Data in Context
of Batches



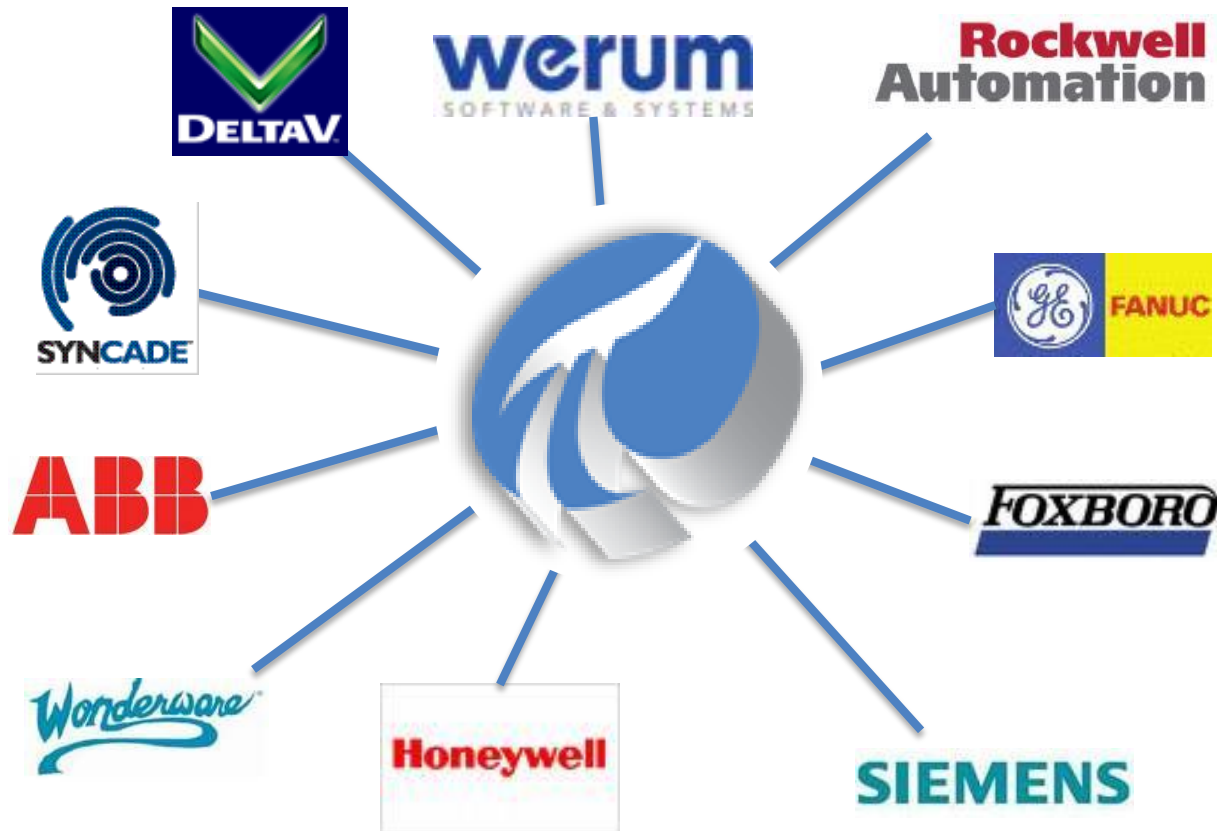
Analyze Batch
Product
Information



Drive the
Batch Release
Process



PI Interfaces for BES & MES: Supported Systems



MES Interfaces: Looking Ahead in 2014

New Interfaces

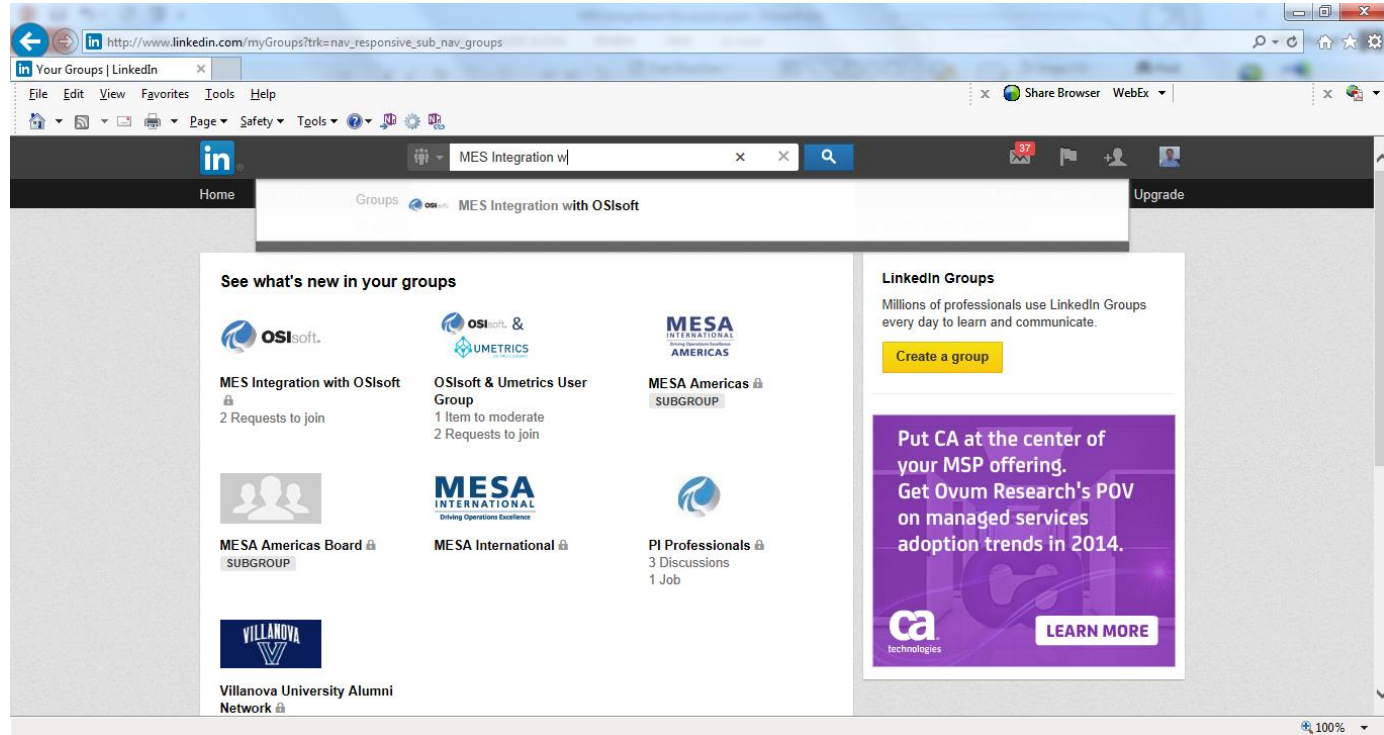
- Siemens XFP MES
- Werum Update for External Data Model

Under Discussion

- Rockwell PharmaSuite
- Apriso

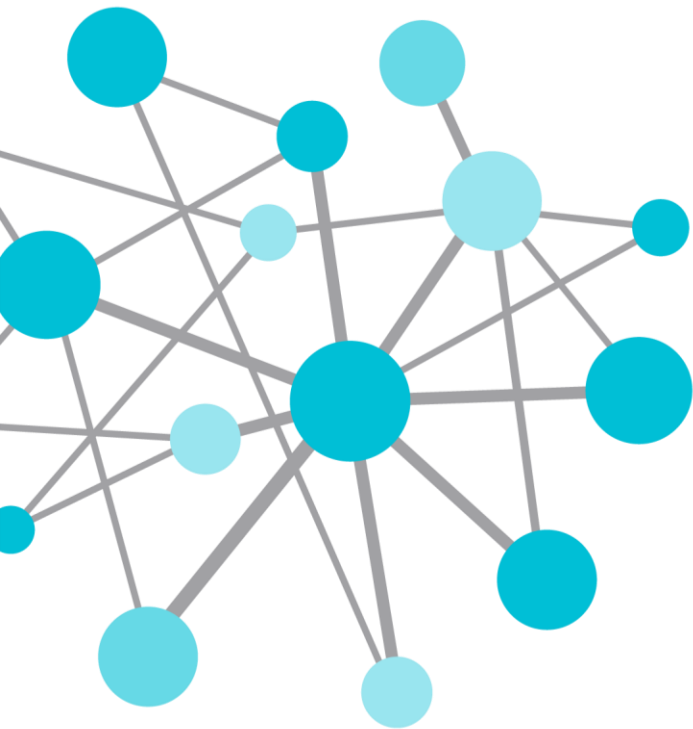
Joining the Working Group

- Log into LinkedIn
- Go to Interests > Groups
- Search for Group “MES Integration with OSIsoft”
- Select Join



Group Discussion

- Other MES Integration Desired?
- Regionalization?
- Etc.
- Etc.



THANK
YOU

Brought to you by  **OSI**soft.