



# Kemira KemConnect™ Smarter Process Management

Presented by Antti Pirneskoski &  
Torsten Haverinen-Nielsen

**kemira**  
Where water  
meets chemistry™

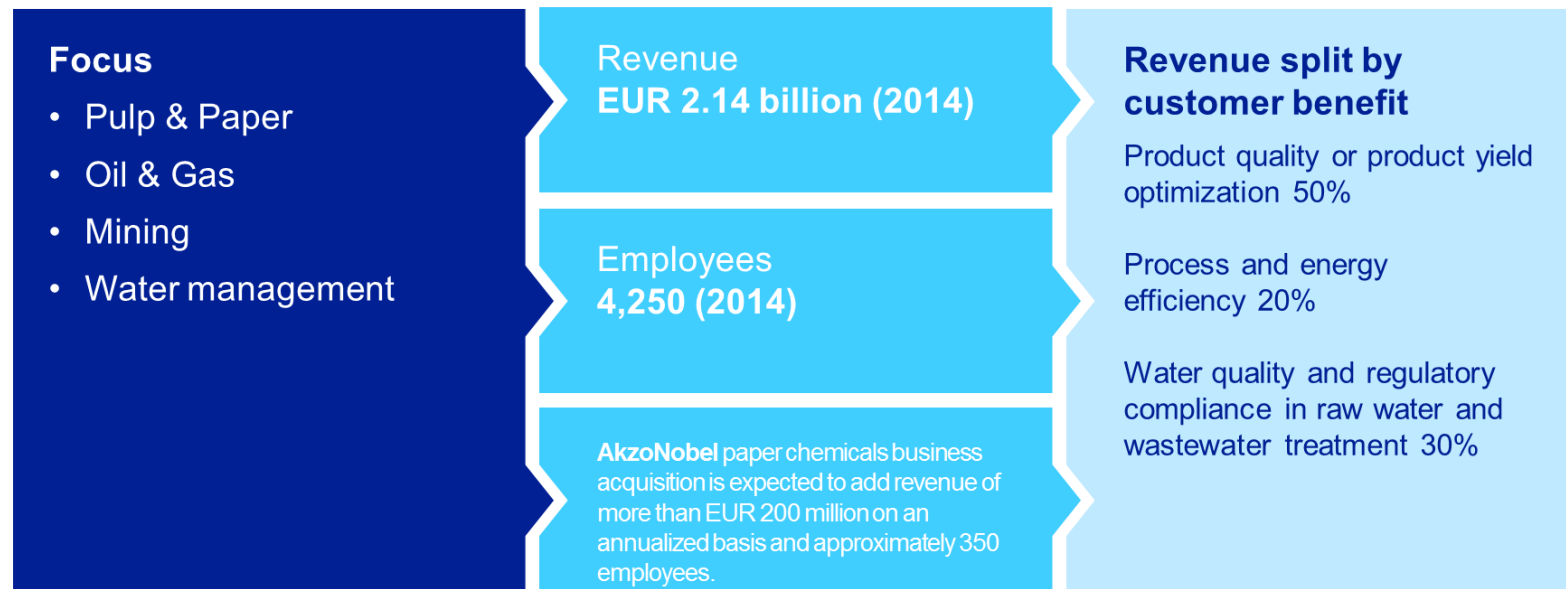
# Agenda

- Intro to Kemira
- Business Challenge
- Functionalities and Stakeholders
- System Implementation
- Conclusion

# Kemira in brief

We help customers create more value by applying our expertise where water meets chemistry

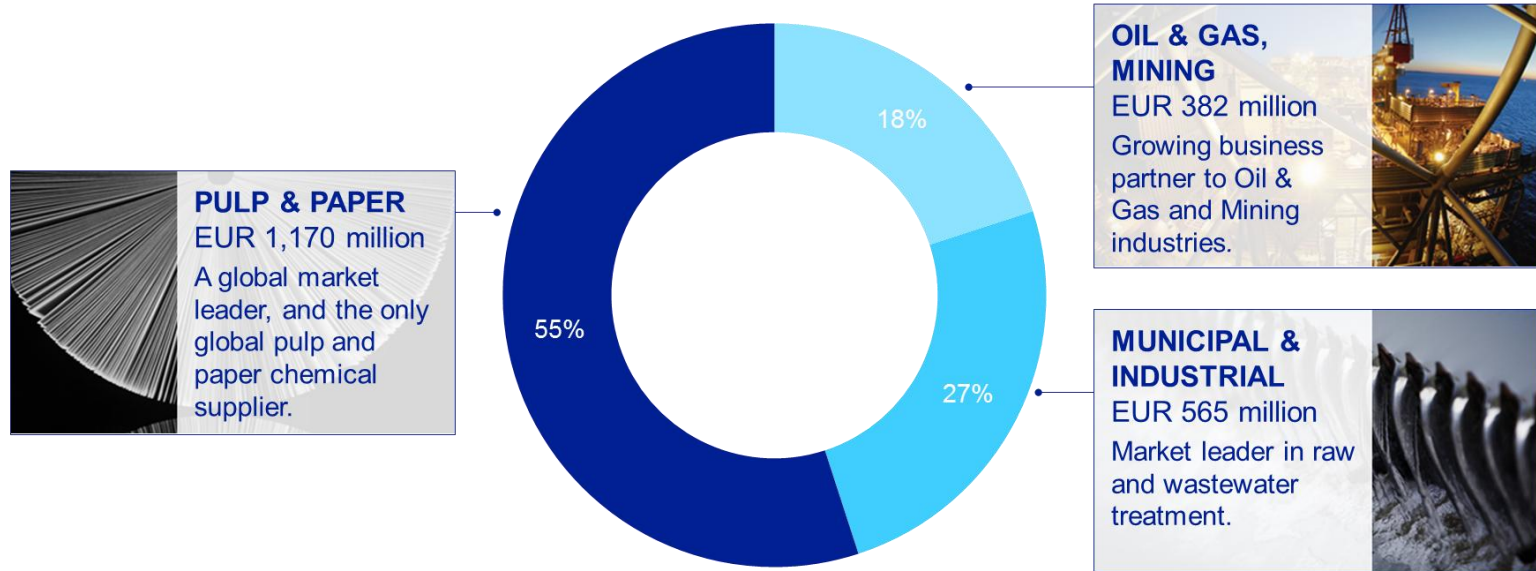
Kemira is a global chemicals company serving customers in water-intensive industries



Kemira shares are listed on the NASDAQ OMX Helsinki stock exchange.

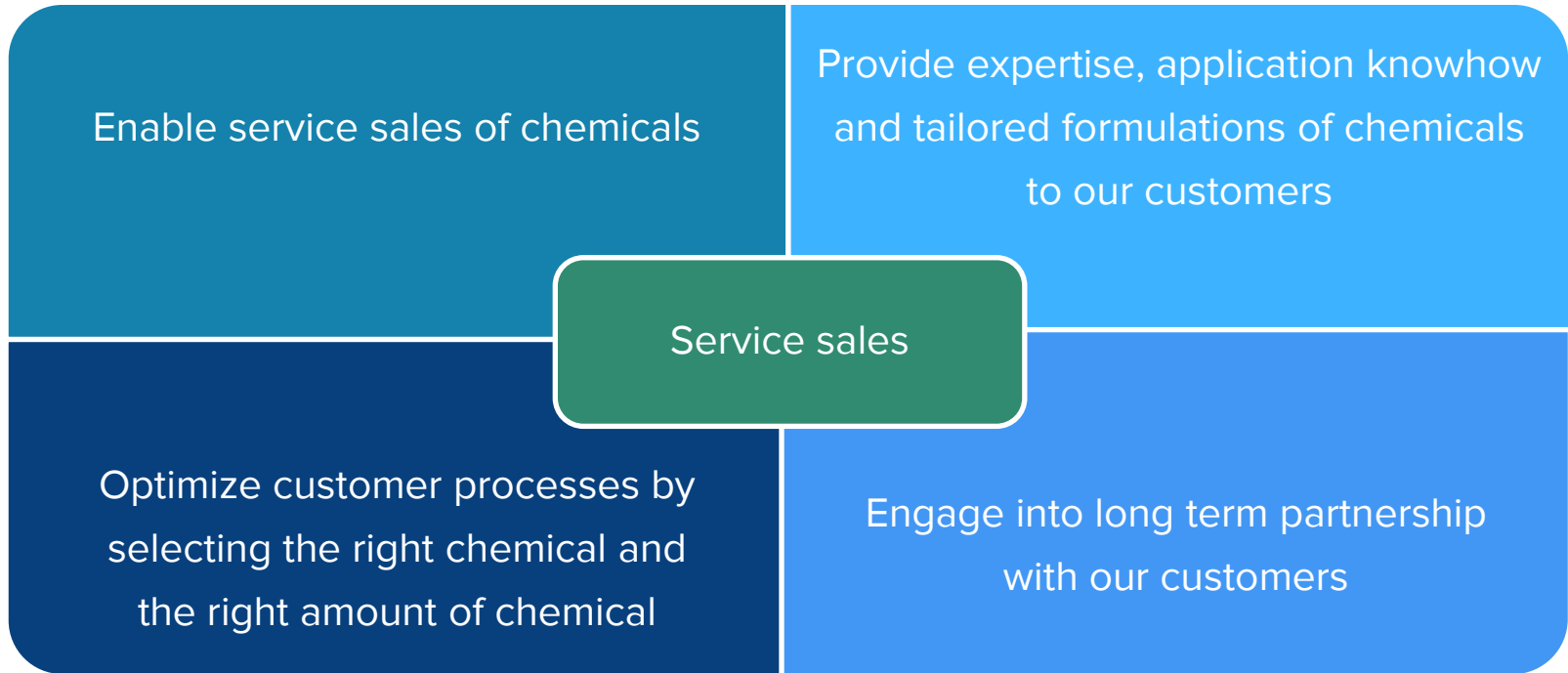
# Kemira in brief

Our business is divided into three segments to best meet our customers' needs

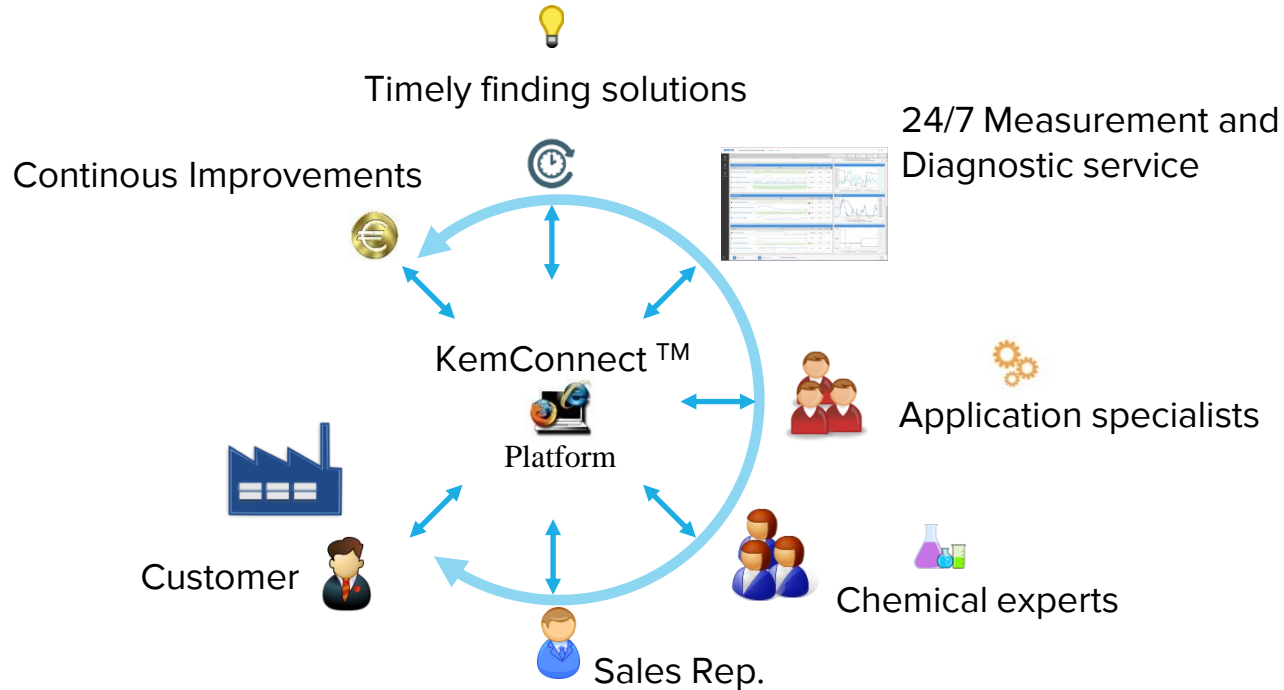


SALES BY SEGMENT (2014)

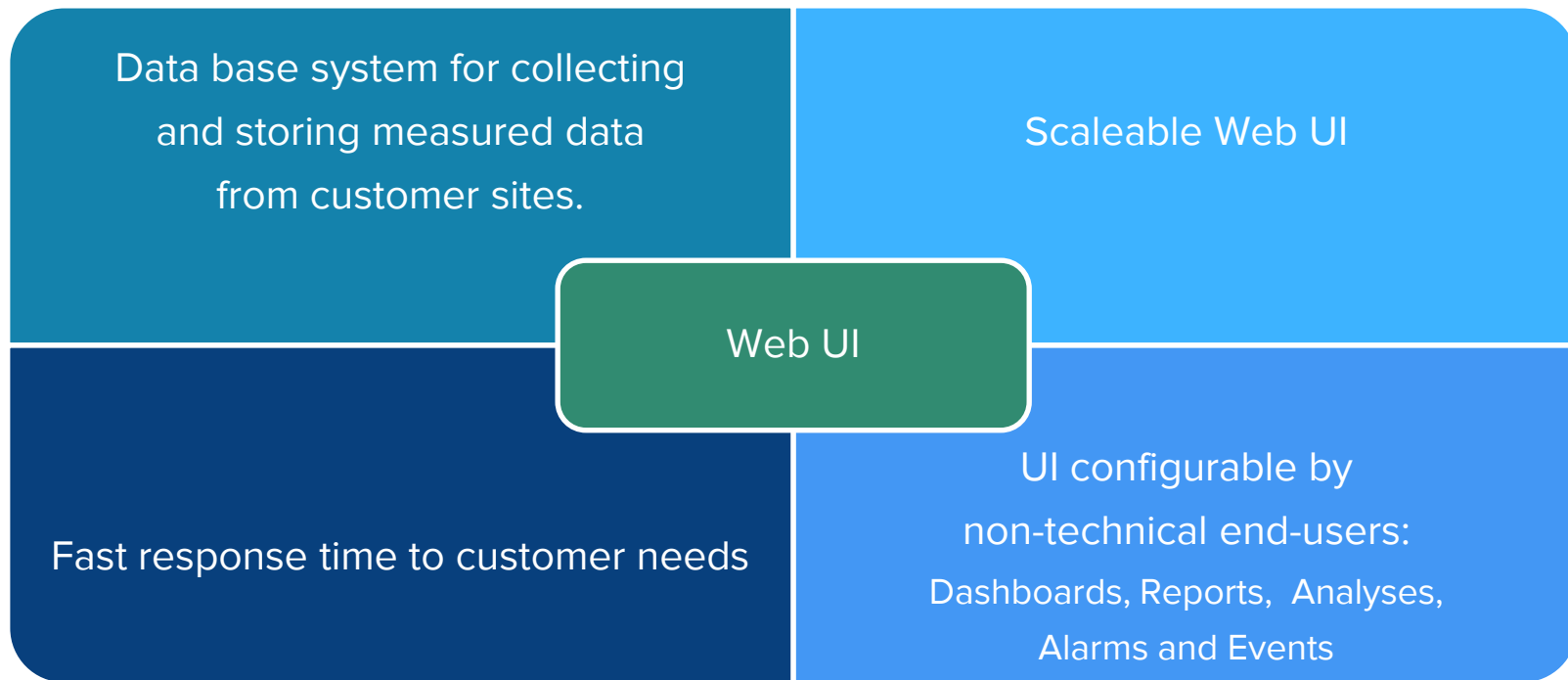
# Business Challenge



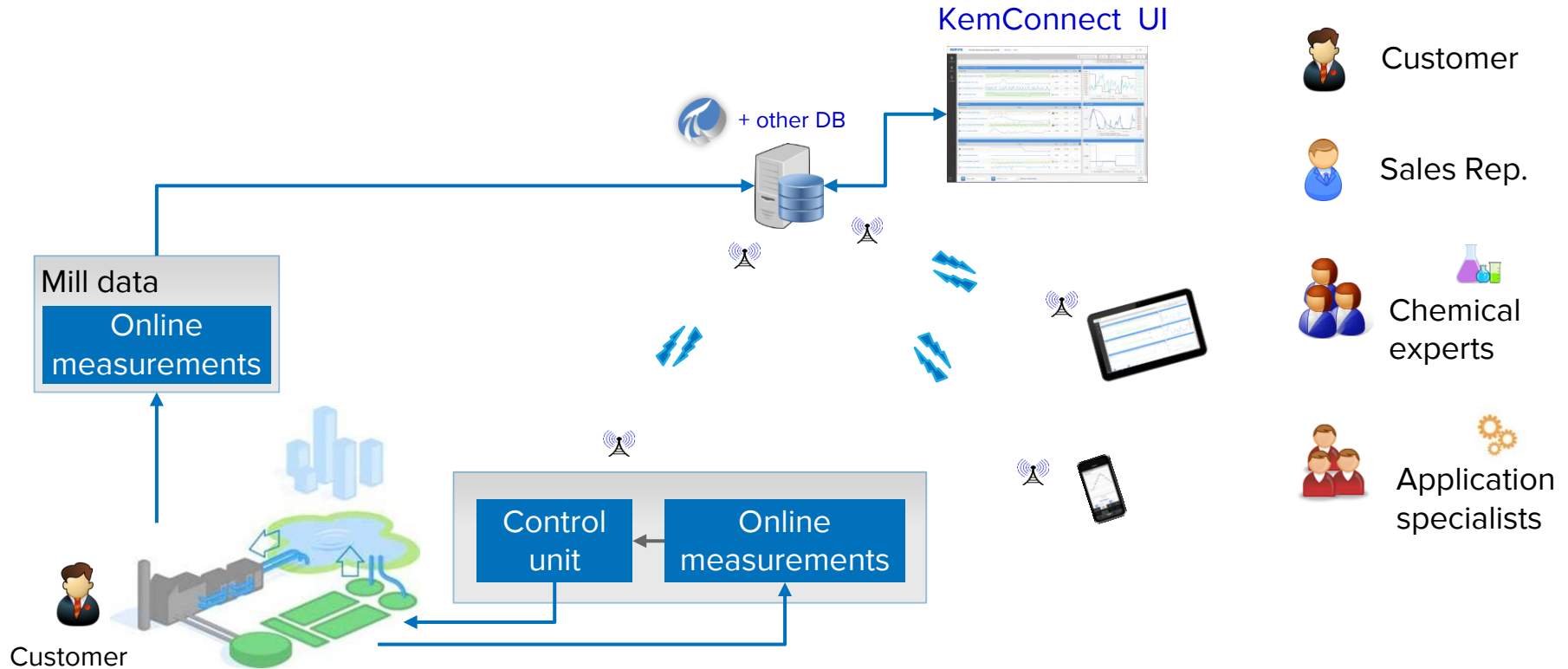
# Stakeholders interaction



# Technical Challenge

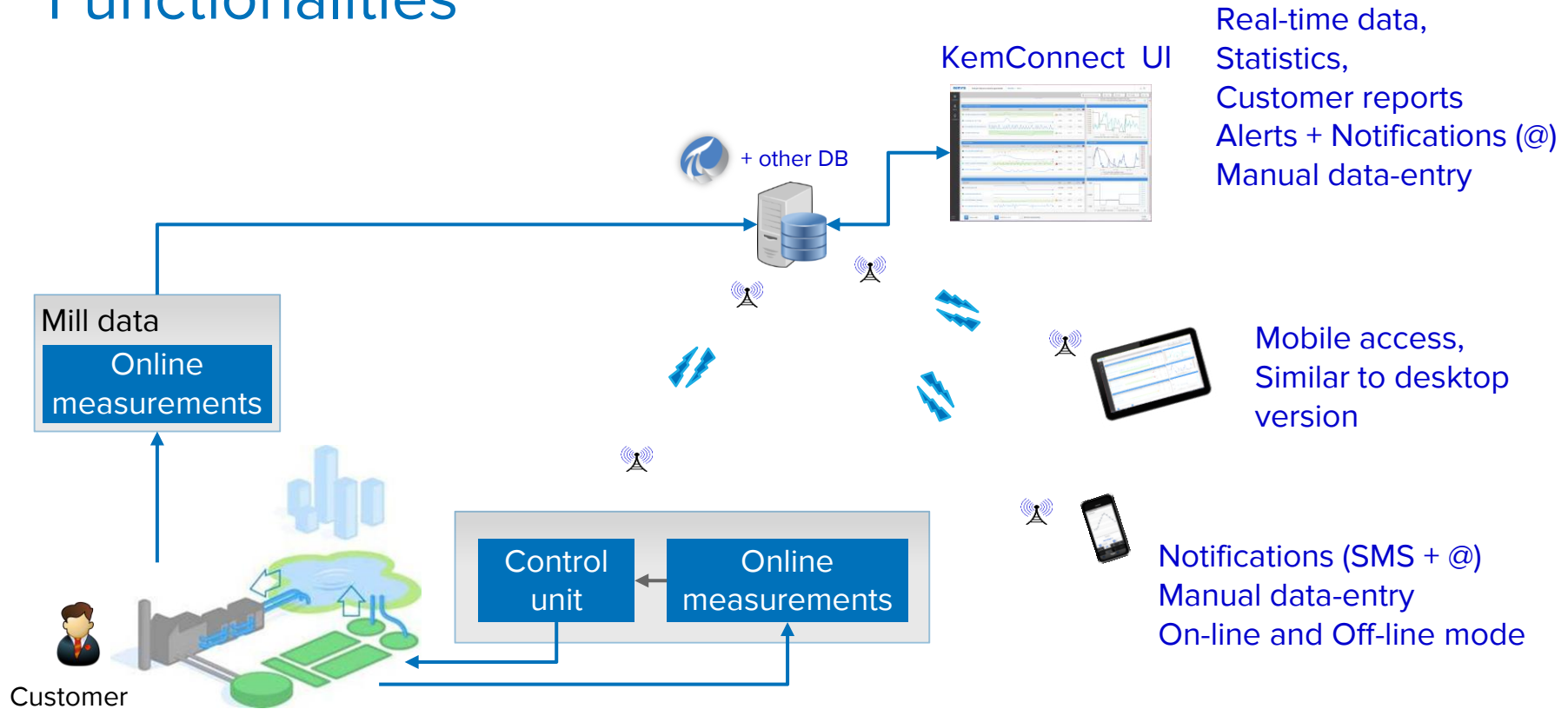


# Data Flow



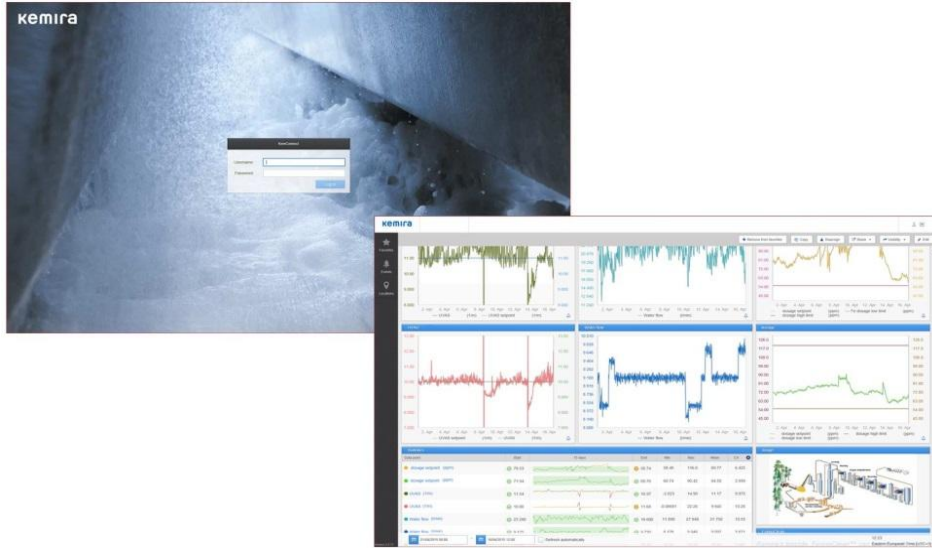


# Functionalities

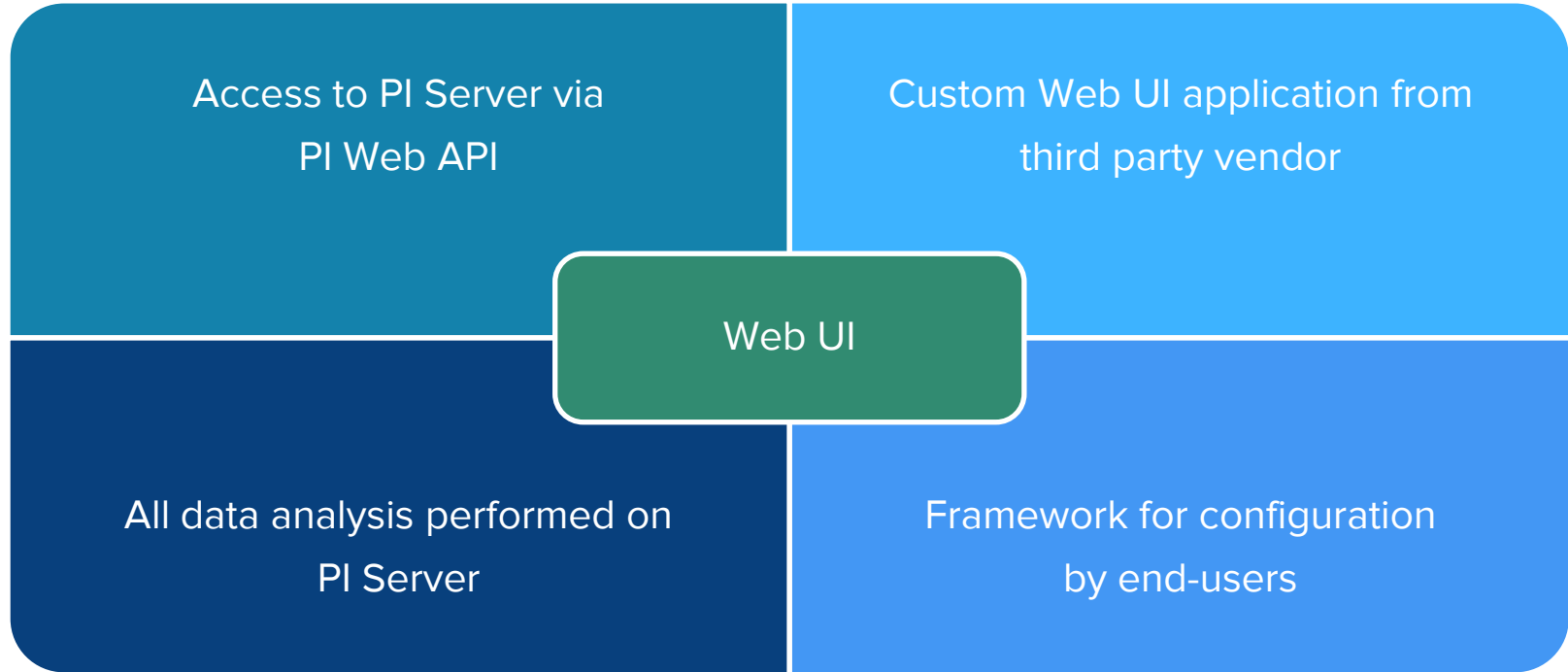


# On-line Service

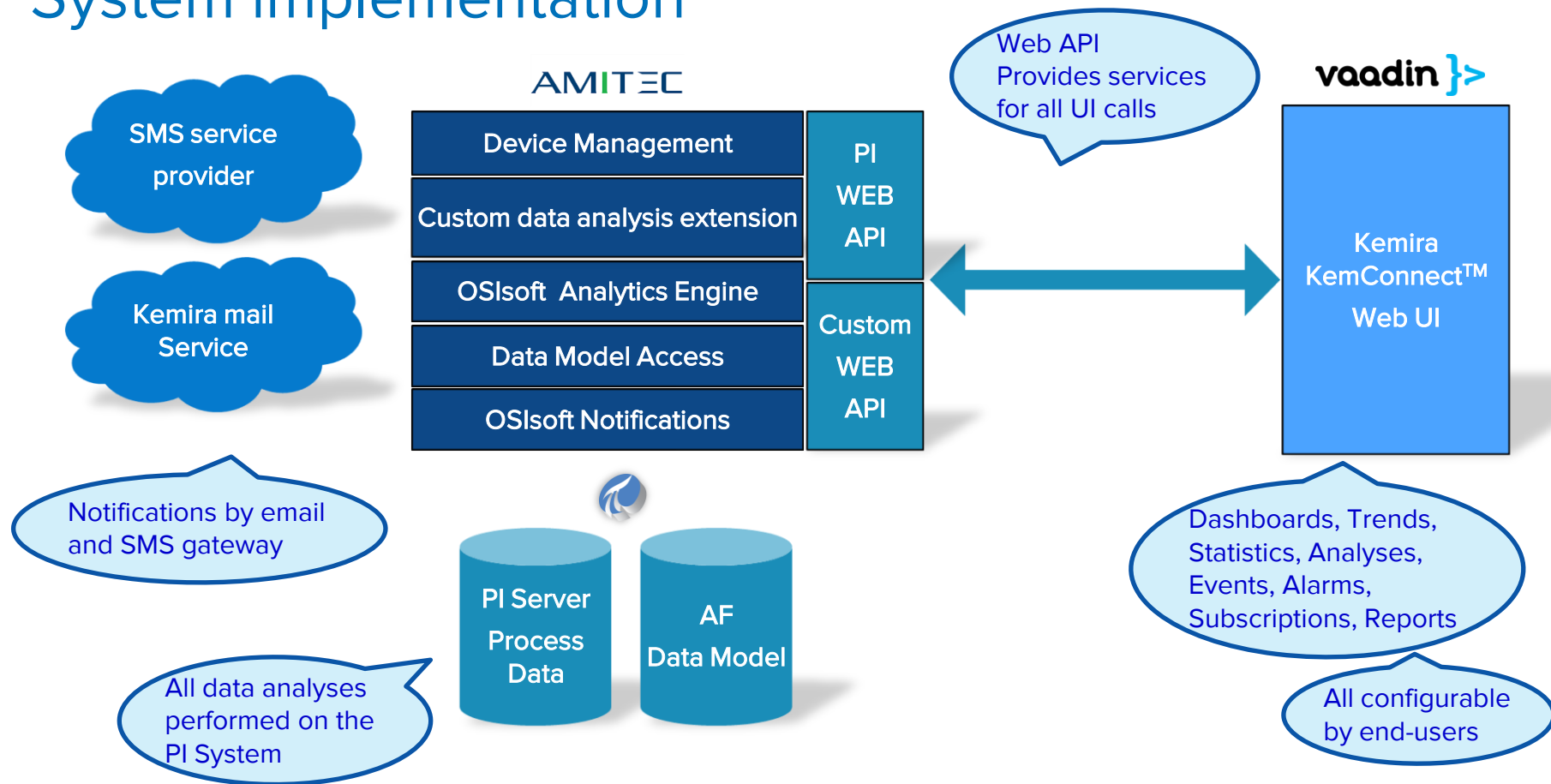
- The KemConnect™ portal is the center for interacting with real-time measured data.
- All people with access to a specific site are able to follow dashboards and KPI from this site.
- Also analyses and reports can be shared between users.
  - For example, Kemira experts can create analyses, dashboards or reports and share them directly with customers.



# Web UI



# System implementation



# OSIsoft Components

- PI Web API
- PI Server
  - Event Frames
  - Notifications
  - Asset Framework
- PI Data Archive in HA
- PI AF SDK
- Asset Analytics

# Summary

Kemira is using OSIsoft's new Connected Services offering and PI System infrastructure to capture and connect customer's sensor-based data to optimize chemicals in customers' processes with greater accuracy and precision.

Prior to this decision, we were using many different databases and experienced several challenges with support, low and disparate data resolution, and scalability.

The open connectivity, scalability and reliability of the PI System allows us to integrate all our tools with a single underlying data infrastructure, enabling us to provide premium services to our customers in a very efficient and cost-effective data driven environment.



## BUSINESS CHALLENGES

- Provide expertise, application knowhow and tailored formulations of chemicals to our customers
- Enable service sales of chemicals
- Turn large data quantities towards solution and service sales
- Optimize customer processes by selecting the right chemical and the right amount of chemical

## SOLUTION

- Create web platform for collecting, viewing and analyzing customer data from multiple sources
- The platform must be configurable and easy to use by non-technical users
- Customized UI
- Utilizing Web API and OSIsoft's new Connected Services offering

## RESULTS AND BENEFITS

- Enhanced productivity for end-users
- Allows us to integrate all our tools with a single underlying data infrastructure
- We help customers to create value by applying Kemira's KemConnect™ smart process management

# Contact Information

Antti Pirneskoski

[Antti.pirneskoski@kemira.com](mailto:Antti.pirneskoski@kemira.com)

Sr. Manager Application and  
Business Development

Kemira

Torsten Haverinen-Nielsen

[Torsten.haverinen-  
nielsen@kemira.com](mailto:Torsten.haverinen-nielsen@kemira.com)

Sr. Research Engineer

Kemira

# Questions

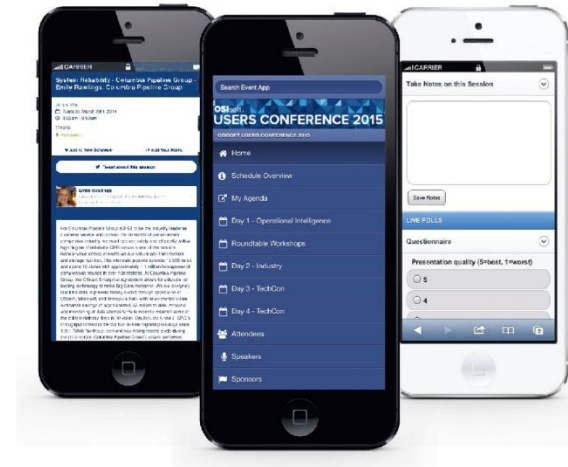
Please wait for the **microphone** before asking your questions



State your  
**name & company**

# Please don't forget to...

Complete the Online Survey  
for this session



<http://eventmobi.com/emeauc15>



감사합니다

谢谢

Danke

Merci

Gracias

Thank You

ありがとう

Спасибо

Obrigado

תודה