



Achieving Uniform Global Production Efficiency and Quality with OSIsoft's PI System

Presented by Jan de Wilde, Allnex
Florian Spribille, SpiraTec





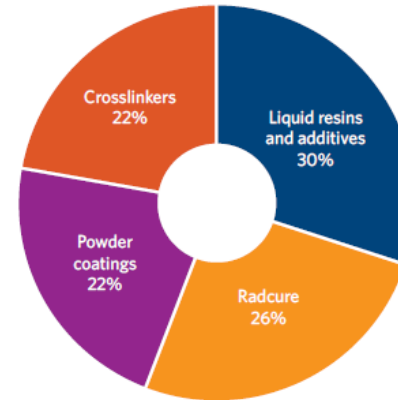
- Allnex and SpiraTec – who we are
- Initial situation and targets at Allnex
- System solution – Infrastructure, components, applications
- Results and benefits
- Future forecast and conclusion

Agenda

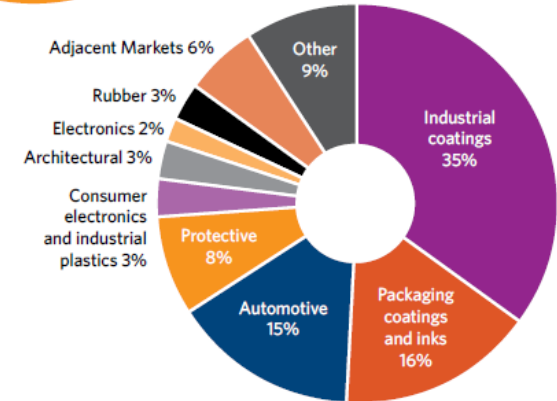
ALLNEX – OUR BUSINESS

- \$ 1.5 billion Company with main focus on Resins
- A global leader in the \$30 billion coating resins industry
- Strong position in its four Product Lines:
 - Liquid Resins & Additives
 - Radiation curable resins
 - Powder coating resins
 - Cross linkers
- Multiple end user segments:
 - Automotive,
 - Industrial,
 - Packaging coating and inks,
 - Protective,
 - Consumer electronics & industrial plastics
 - Specialty architectural.

2012 SALES
BY SEGMENT



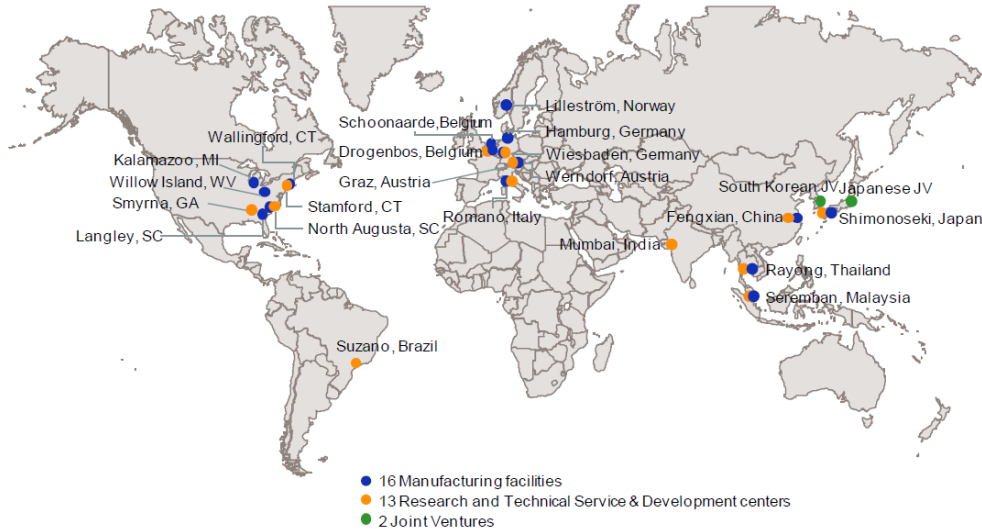
2012 SALES
BY END-MARKET



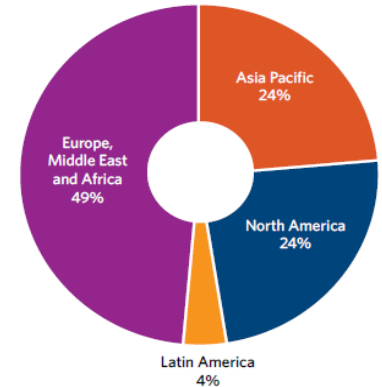
ALLNEX – OUR GLOBAL BUSINESS

- 16 manufacturing facilities,
 - 13 research and technology centers,
 - 2 joint ventures (Korea & Japan)
- www.allnex.com

Production sites and laboratories / technology centers

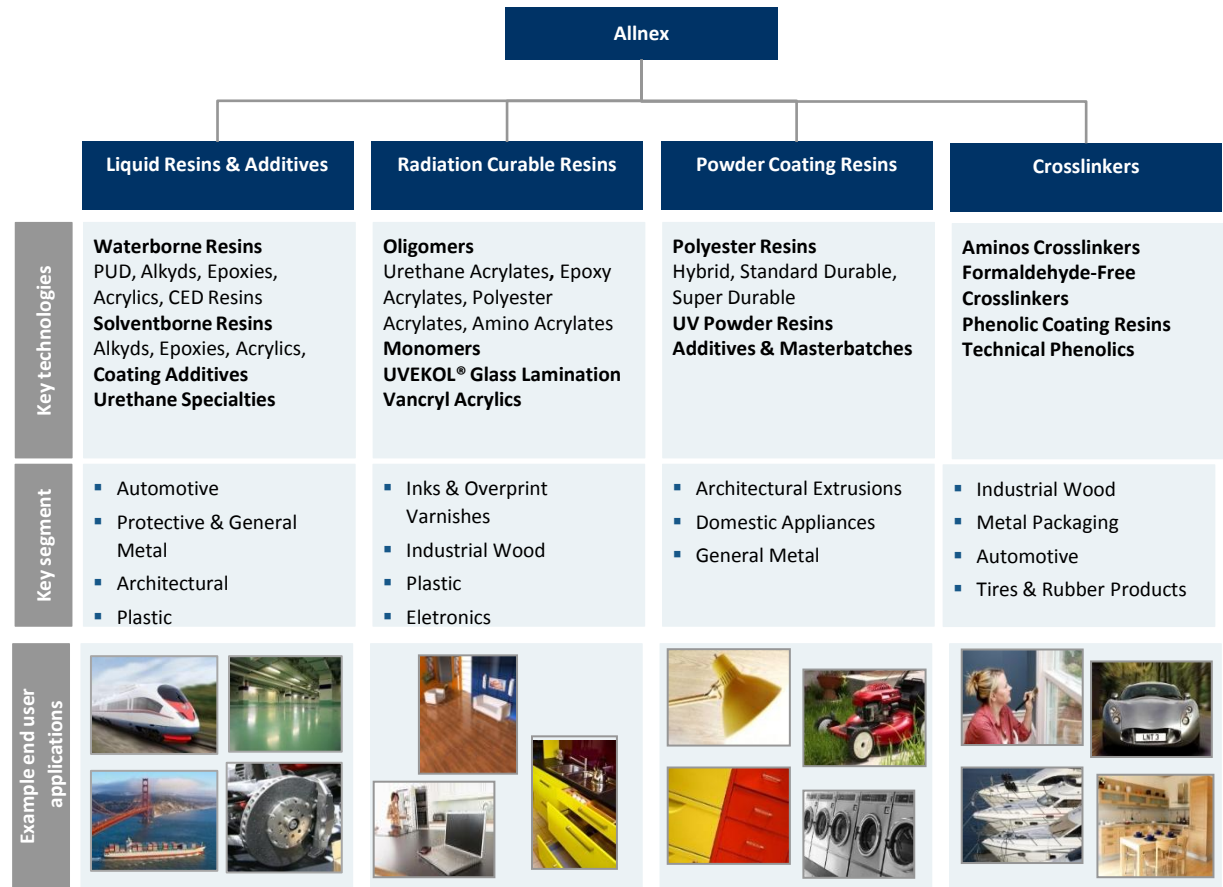


2012 SALES
BY GEOGRAPHY



**2 000 EMPLOYEES DEDICATED TO
COATING RESINS**

ALLNEX – OUR TECHNOLOGIES



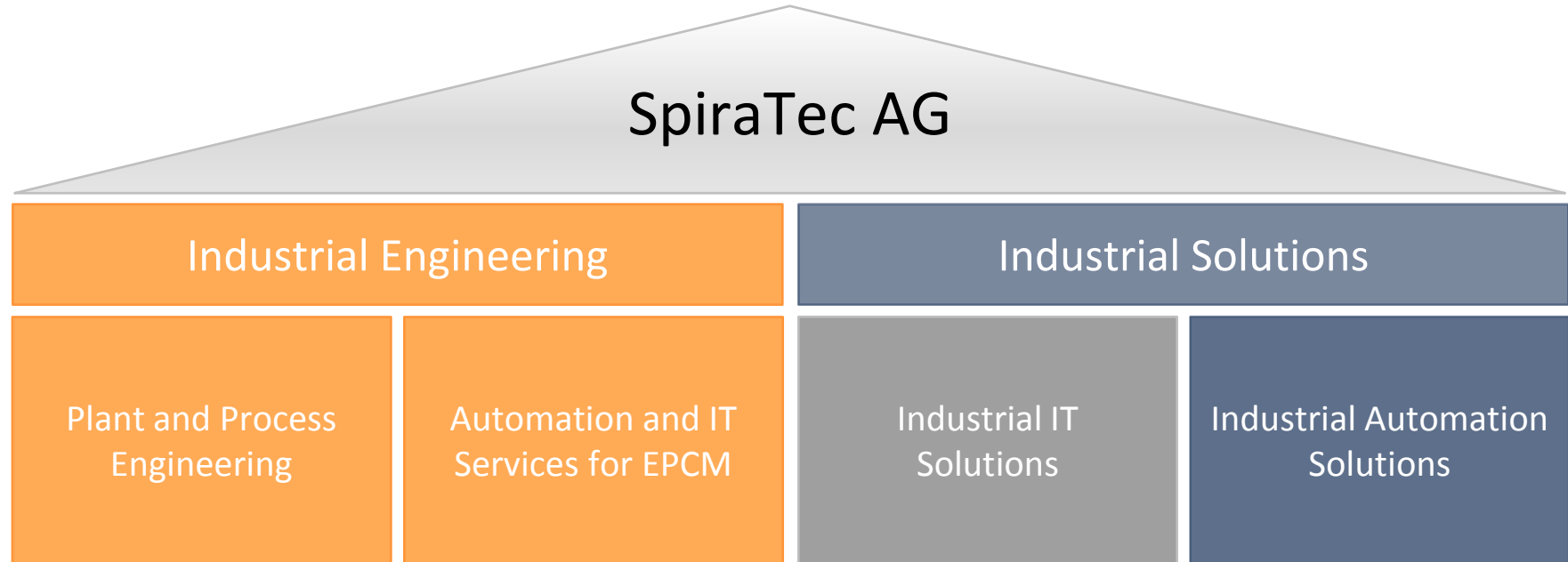
Industry's broadest resins portfolio

Company overview SpiraTec AG



- **Headquarters** Speyer – Germany
- **Branches** Germany, Austria, USA
- **Foundation** Nov. 2007
- **Board of management** Andreas Schadt - CEO, Frank Heines – CEO
- **Employees** Extension to more than 180 employees in less than 8 years
- **Company claim** **Industrial Engineering and Solutions for manufacturing excellence**
- **Target markets** Europe, USA, Arabic Gulf States
- **Customers** TOP 100 companies of the process and discrete industry and international plant construction
- **Systems** Production management and process control systems
Implementation of systems of leading suppliers from Europe, USA and Asia.
Generation of integrated solutions for notable customers worldwide
- **Our services** IT and automation consulting, engineering, system integration and services for operating production plants.

Overview of business segments

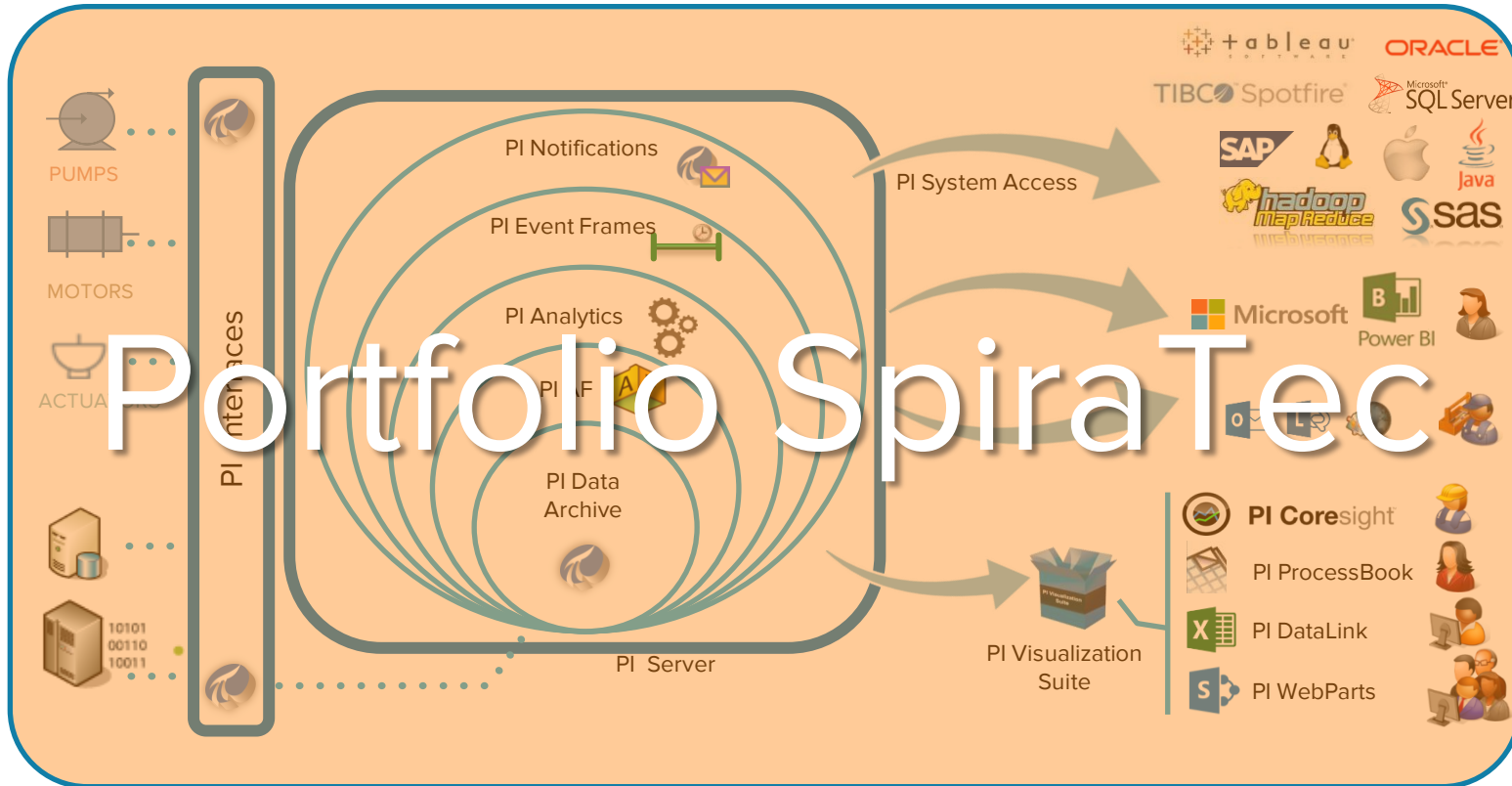


SpiraTec services for OSIsoft

- Long-term partnership with OSIsoft
- Large team of engineers with strong background in PI System design and modules
- Concept / system design
- System installation and configuration incl. implementation of the (virtual) IT infrastructure
- Integration of shop-floor systems (DCS, PLC, PU)
- Integration of ERP systems (i.e. SAP) via Enterprise Service Bus (i.e. SAP MII)
- Horizontal integration
- Application design und development (PI AF, PI SDK, PI OLEDB,...)
- 1st und 2nd level support (Serviceline program, ticket system, FAQ, etc.)
- Migration of OSIsoft- and third-party systems
- Training / Workshops



PI System Infrastructure

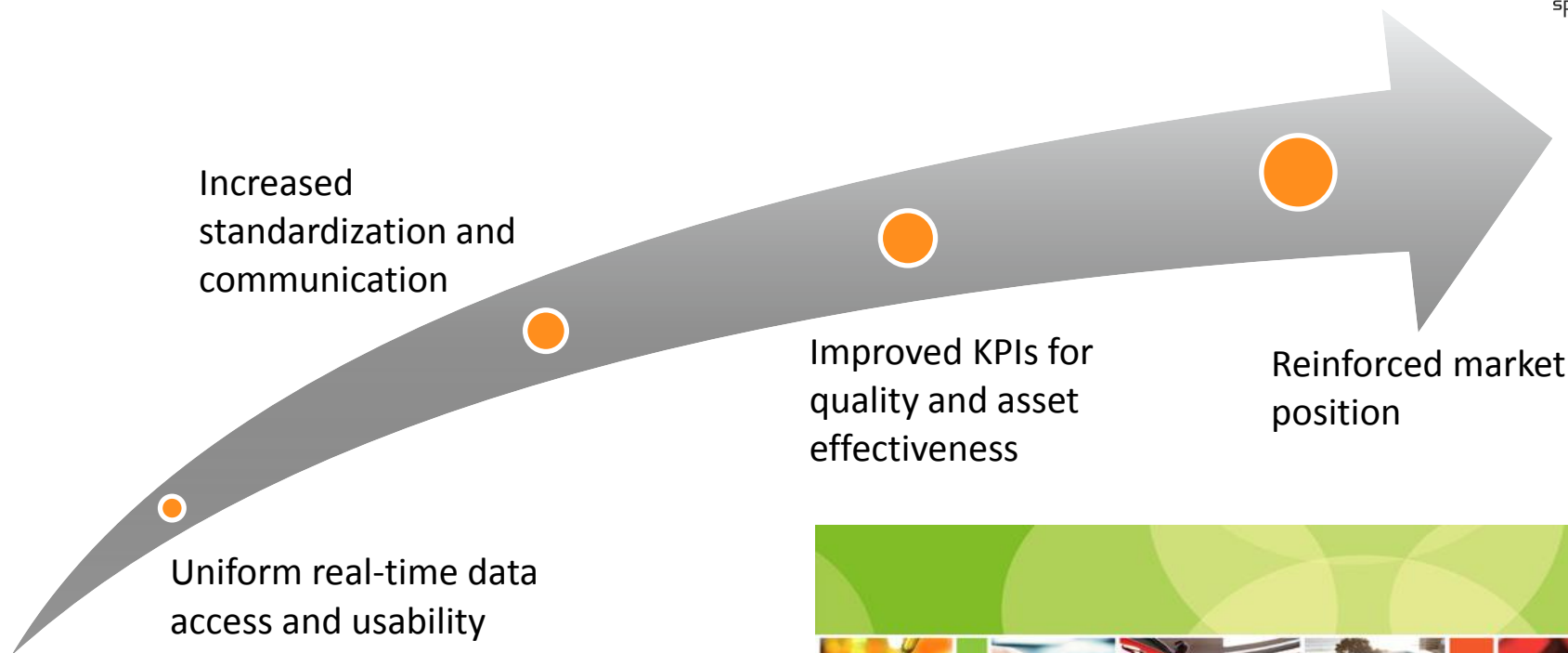


Starting point at Allnex

- Diverse DCS and historian systems implemented in the enterprise
- Centralized data hubs for sites and global approach missing
- Standardization in quality and efficiency initiatives required
- No adequate solution for horizontal and vertical integration of IT systems

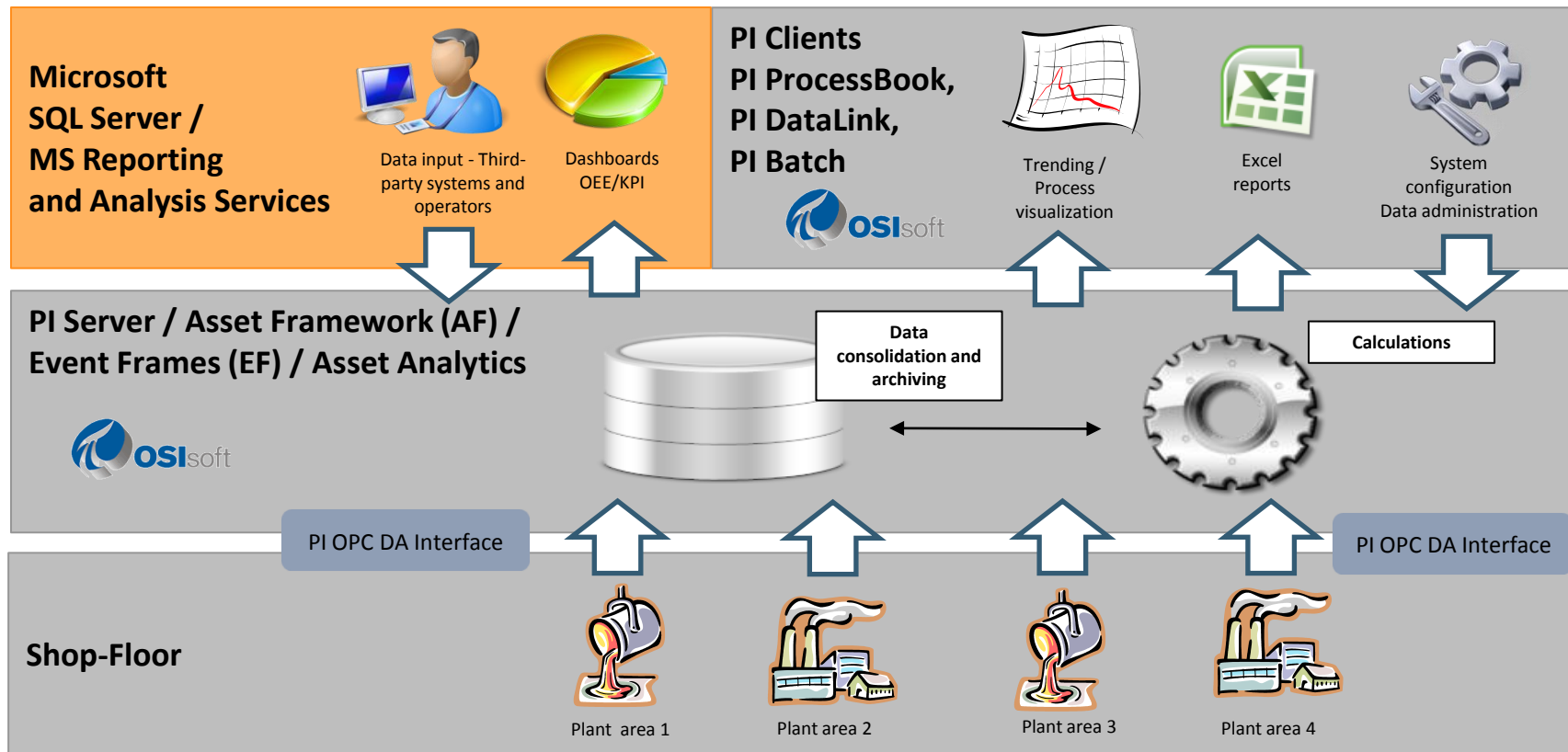


Targets




All About Resins

Solution Part 1 – System Design



System Design – Components and interfaces

- Triple server to ensure system performance and availability (PI Server, Asset Framework Server, terminal server)
- Virtualized environment - Easy and safe system administration, user access and data backup

- PI OPC DA Interface for connection of diverse DCS systems
- Customized communication tools to enable automated data migration and transfer for system revision or enlargement
- Standardized components for hard- and software assure system comparability and long-term reliability for the enterprise

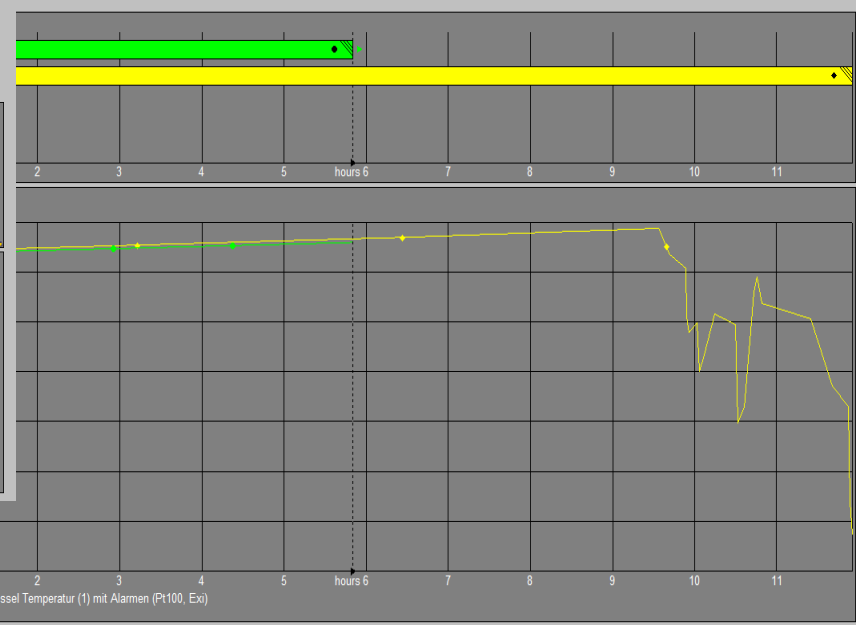
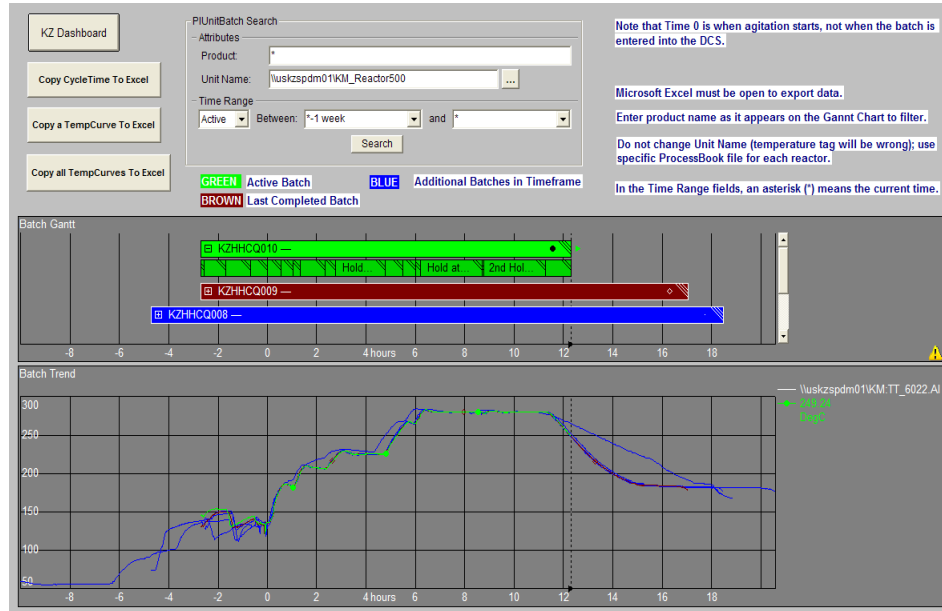


Solution Part 2 – Applications

- Asset effectiveness
- Batch management
- Process supervision
- Alarm management
- Energy management
- Preventive maintenance
- Management dashboards

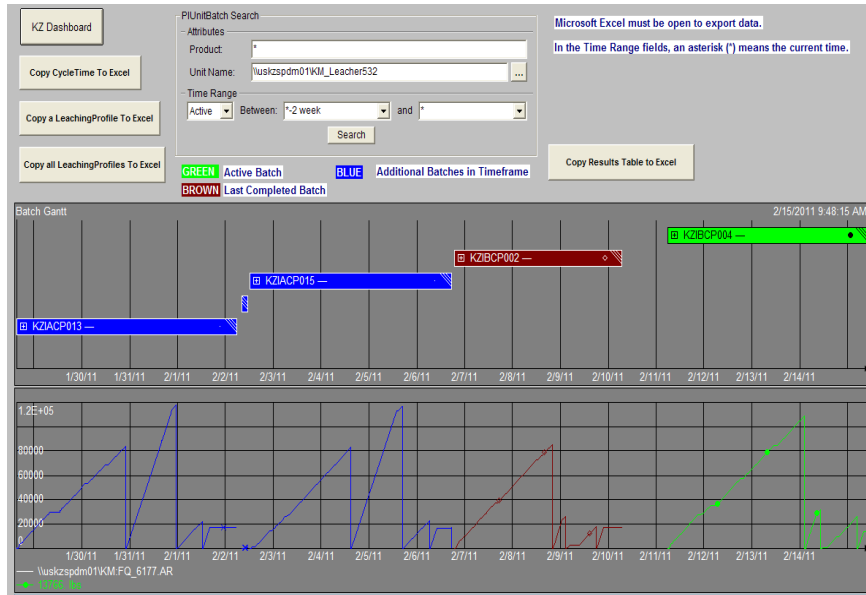


“PI Batch enables effective Golden Batch analysis for production and quality management”



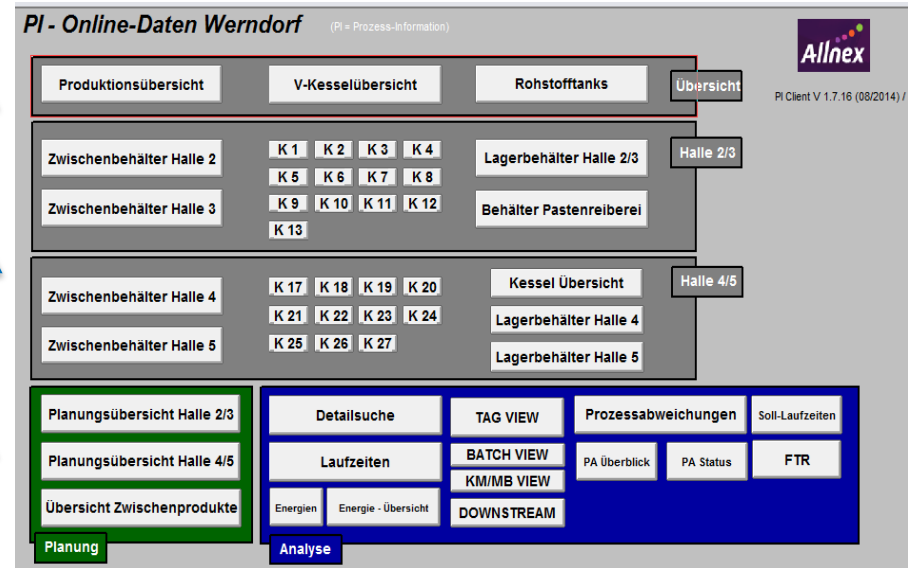
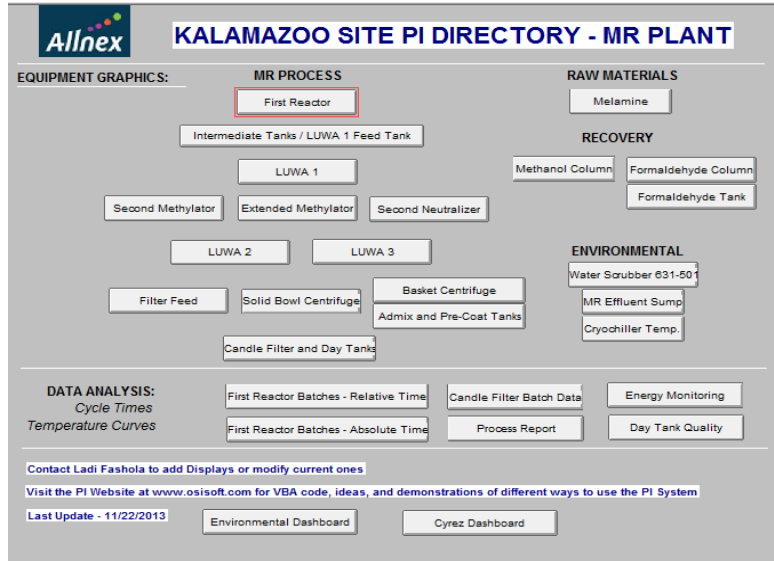
“Sub-Batches and cycle times are selected in pre-developed drop-down menus and tracked in periodic batch reports as required by production engineers”

Batch Summary Report

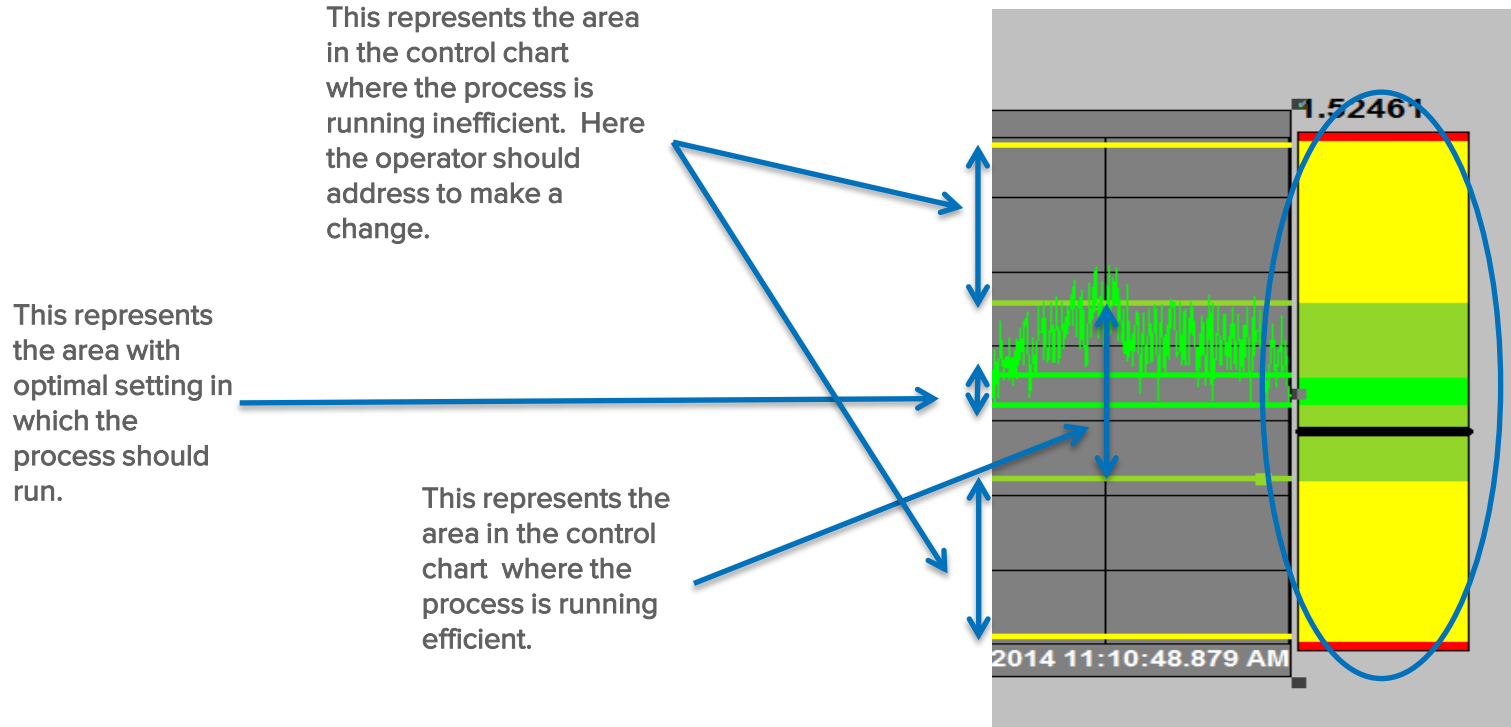


Start Time	01-Aug-2014 00:00:00	End Time	15-Aug-2014 00:00:00	Set Date Time
Batch ID	2401-2/S13140819			Update Batch ID
Product Name	UNDEFINED			Refresh Report
Batch Start Time	Batch End Time	Duration (Hours)		
09-Aug-14 22:15:56	11-Aug-14 20:03:21	45.79015166		
Unit Procedure Name	Unit Procedure Start Time	Unit Procedure End Time	Duration (Hours)	
TPA\TPA_POWDER\TPASILO	09-Aug-14 22:16:00	10-Aug-14 00:30:26	2.240555556	
UCB_REACTOR3\UCB_REACTOR_UNIT\REACTOR_3	09-Aug-14 22:16:00	11-Aug-14 04:53:51	30.63083333	
Operation Name	Operation Start Time	Operation End Time	Duration (Hours)	
OP_UCB_POWDER-1-1	09-Aug-14 22:16:00	10-Aug-14 00:30:24	2.239894443	
OP_PREP-1-1	09-Aug-14 22:16:00	09-Aug-14 22:17:16	0.021261109	
OP_RM_CHRG1-1-1	09-Aug-14 22:17:19	10-Aug-14 03:07:39	4.838876665	
OP_DIST1-1-1	10-Aug-14 03:07:39	10-Aug-14 11:26:16	8.31045639	
OP_RM_CHRG2-1-1	10-Aug-14 11:26:16	10-Aug-14 12:26:43	1.007478612	
OP_DIST2-1-1	10-Aug-14 12:26:43	10-Aug-14 15:16:19	2.826498057	
OP_VACUUM-1-1	10-Aug-14 15:16:19	10-Aug-14 21:08:11	5.864619446	
OP_RM_CHRG3A-1-1	10-Aug-14 21:08:11	10-Aug-14 21:34:36	0.440148332	
OP_DISC-1-1	10-Aug-14 21:34:38	11-Aug-14 04:53:51	7.320083334	

“Existing PI System dashboards are available throughout the enterprise enabling data drill-down and comparison between sites and production processes”



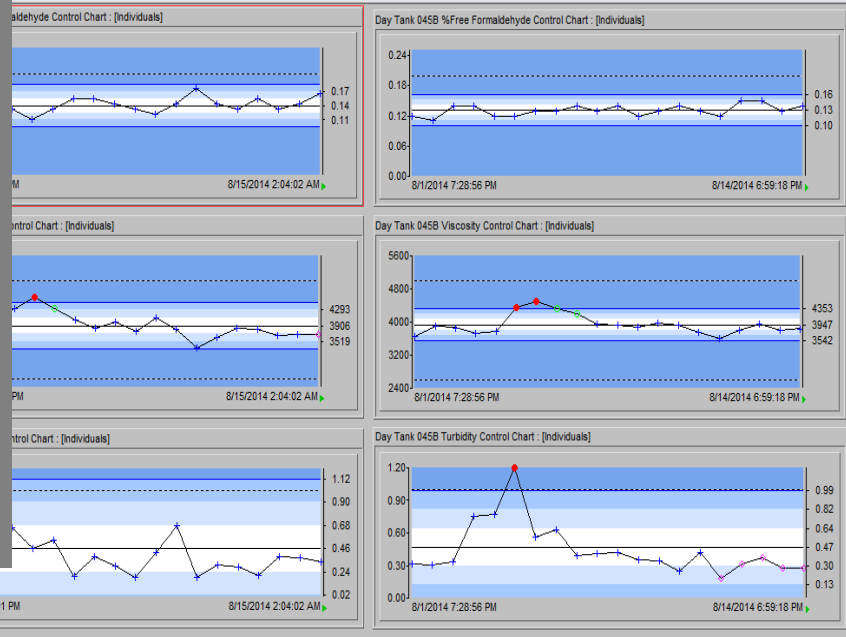
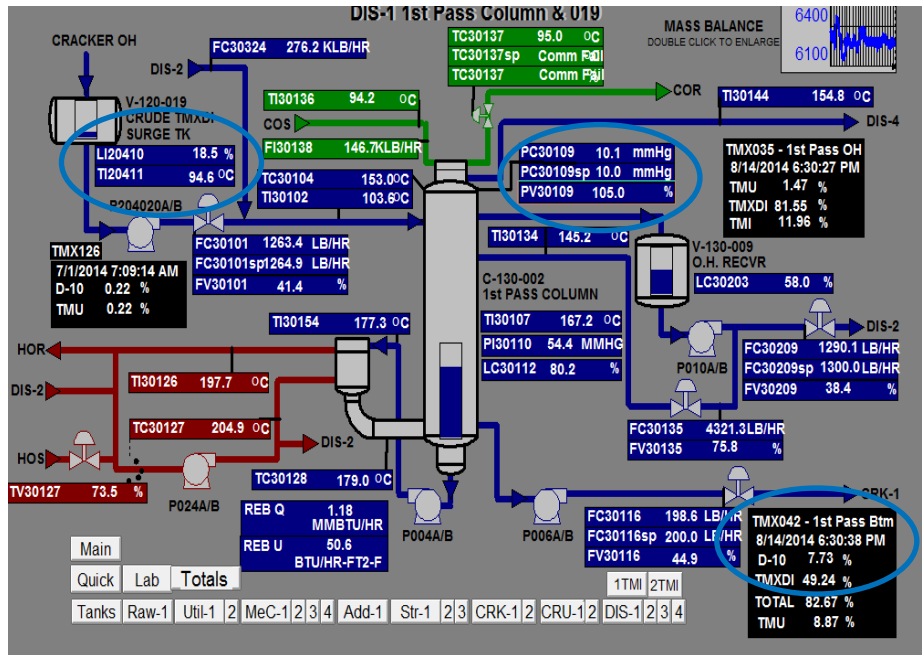
“Diverse applications for energy management and tracking of energy resource consumption enable statistical process control”



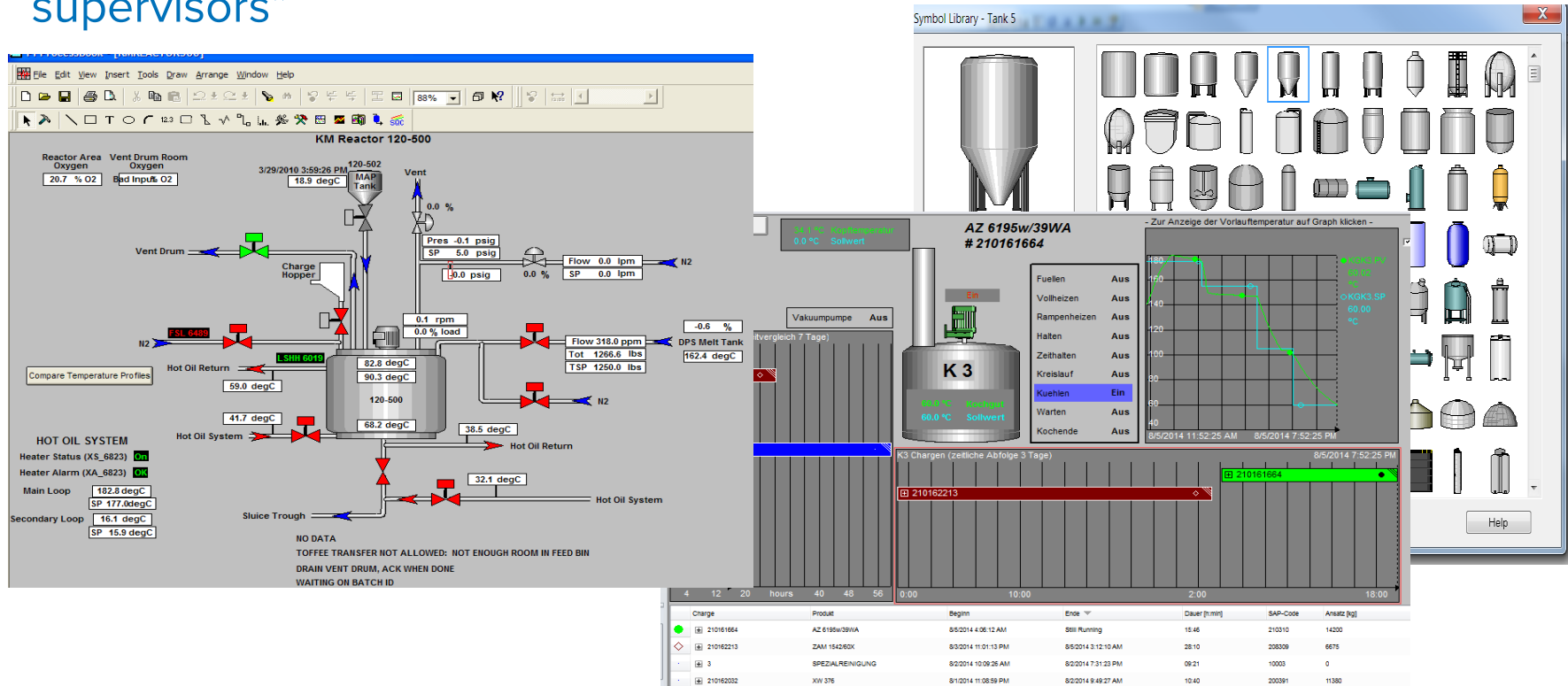
“PI System Weekly Visual Report in PI DataLink for automated overview and effective decision-making”

Chargenfolge Halle 4/5									KW 33/2014			8/10/2014		bis		8/17/2014		Allnex											
	8/10/2014	8/11/2014	8/12/2014	8/13/2014	8/14/2014	8/15/2014	8/16/2014	8/17/2014	Gesamtheit	Produktion	Reparatur	Kessel durch MB besetzt	VE-Verlust	Reparatur-Wartung	Material auf Rollzeit VPI usw.	kein Personal	kein Programm	Stillstand											
K18		AX 247w/70BGMP 37h / #160175	R 3h (7h) /	VUP 4627 BEMT/56 23h / #160047	UP 303/65 54h / #160227		ZUP 4646 71h / #160528		100%	0%	0%	0%	0%	0%	0%	0%	0%	0%											
						Wochenende			144.00	00.00	00.00	0%	0%	0%	0%	0%	0%	0%											
K19	Rk 3h (5h) / #19	PU 428/5 10h / #160	Rk 5h (5h) / #19	AN 66160MEK 35h / #160214	R 8h (7h) / #19		SAM 165w/70LGWA 22h / #153952	R 11h (7h) / #19	100%	0%	0%	0%	0%	0%	0%	0%	0%	0%											
						Wochenende			144.00	00.00	00.00	0%	0%	0%	0%	0%	0%	0%											
K20	VAZ 6600w/36WA 68h / #153436	Rk 8h (5h) /	VAZ 554w/42WA 52h (43h) / #153117		Rk 27h (5h) / #20	ZTD 5544 12h (12h) / #	Rk 71h (41h) / #160030		144.00	00.00	00.00	0%	0%	0%	0%	0%	0%	0%											
	Unterbrechung			Unterbrechung		Unterbrechung			100%	0%	0%	0%	0%	0%	0%	0%	0%	0%											
K21	ZAN 6015 56h (35h) / #153703	R 7h (7h) /	ZAN 6015 30h (35h) / #153704	R 6h (7h) /	ZAN 6015 53h (35h) / #153705		R 12h (7h) / #21	ZAN 6015 43h (35h) / #153706	144.00	00.00	00.00	0%	0%	0%	0%	0%	0%	0%											
	Wochenende			Unterbrechung					100%	0%	0%	0%	0%	0%	0%	0%	0%	0%											
K22		ZAF 7117/52SD60 23h / #158690		ZAF 2h (5h) / #22					144.00	00.00	00.00	0%	0%	0%	0%	0%	0%	0%											
						Wochenende			100%	0%	0%	0%	0%	0%	0%	0%	0%	0%											
K23	SEH 2627 53h / #153737	Rsp 7h (12h) / #23	UP 4838 B1/63 13h / #153958	R 13h (7h) / #23	ZSC 628V70IP 46h / #153625		VSC 6276w/44WA 23h / #153626	Rk 4h (5h) / #23	144.00	00.00	00.00	0%	0%	0%	0%	0%	0%	0%											
	Unterbrechung			Wochenende					100%	0%	0%	0%	0%	0%	0%	0%	0%	0%											
K24	MODAFLOW RESIN 35h (31h) / #153637	MODAFLOW RESIN 36h (31h) / #153640	R 8h (7h) /	SC 3425/50B 13h / #160035	SC 3425/50B R 13h / #160331	32h (7h) / #24	AX 237w/70BG 32h / #160134	Rsp 10h (12h) / #24	144.00	00.00	00.00	0%	0%	0%	0%	0%	0%	0%											
									100%	0%	0%	0%	0%	0%	0%	0%	0%	0%											
K25	ZWX 5235/230 23h / #153905	SWE 5044 BAK/237 20h (13h) / #153912	R 6h (7h) /	ZWX 5235/230 21h / #153913	SWE 5044 BAK/23 18h (13h) / #153914	Rk 40h (5h) / #25	ZWE 5867/7 11h / #15393	ZWX 5235/230 39h / #160109	144.00	00.00	00.00	0%	0%	0%	0%	0%	0%	0%											
						Wochenende			100%	0%	0%	0%	0%	0%	0%	0%	0%	0%											
K26	R 8h (7h) / #26	SWE 5044 BAK/237 13h (25h) / #153907	Rk 8h (5h) /	SWE 5044 BAK/437 20h / #153920	R 7h (7h) /	SWE 5044 BAK/37 13h (25h) / #153913	Rk 30h (5h) / #26	SWE 5044 BAK/339 26h / #153921	144.00	00.00	00.00	0%	0%	0%	0%	0%	0%	0%											
						Wochenende			100%	0%	0%	0%	0%	0%	0%	0%	0%	0%											

“Horizontal integration of OSIsoft PI System with Allnex quality (LIMS) systems using existing interface technology improves integration of diverse information in one data hub”



“Visual Graphics in PI ProcessBook using real-time PI Server data enable better process monitoring and faster troubleshooting for engineers and supervisors”



“The PI Server preventive maintenance tracking in PI DataLink using run-time evaluation for numerous production assets”



TOTALIZER REPORT

Date & Time

21-Aug-2014 08:00:00

Set Date Time

Update

Tag Name	Total Value	Description	Units
09FI0590.TOT	11580687.00	TPA N2 FLOWMETER Totalizer	M3PH
09FIT9420.TOT	203389.14	WW FLOWMETER TO TO Totalizer	M3PH
09LI0303.TOT	0.00	MEG STORAGE TANK Totalizer	liter
09LIT0127.TOT	152934032.00	NPG STORAGE TANK Totalizer	cmWC
09WI0708.TOT	74226616.00	TPA SILO Totalizer	kg

Page 1

PREVENTIVE MAINTENANCE



No.	Agitator	Description	
1	Reactor_1_Usage	Reactor 1	<input type="button" value="Reset"/>
2	Reactor_2_Usage	Reactor 2	<input type="button" value="Reset"/>
3	Reactor_3_Usage	Reactor 3	<input type="button" value="Reset"/>

Page 1

Current status at Allnex

- PI System usage at numerous global sites for production management and quality analysis
- Single-site approach for PI System infrastructure – decentralized servers
- PI OPC DA Interface for connection of diverse DCS systems
- 95% Batch Processes – strong usage of PI Batch and PI ProcessBook
- Alarm handling and control enabled by PI Notifications
- Numerous applications for asset effectiveness, batch analysis and process supervision



All About Resins

Benefits of the System

Global data
access for all
users

Centralized
data platform

Horizontal integration
between third-party
systems, production
plants and sites



Applications for
operational initiatives
improving business-wide
understanding and
standardization

Enabling of future
vertical integration
to ERP and MES
systems

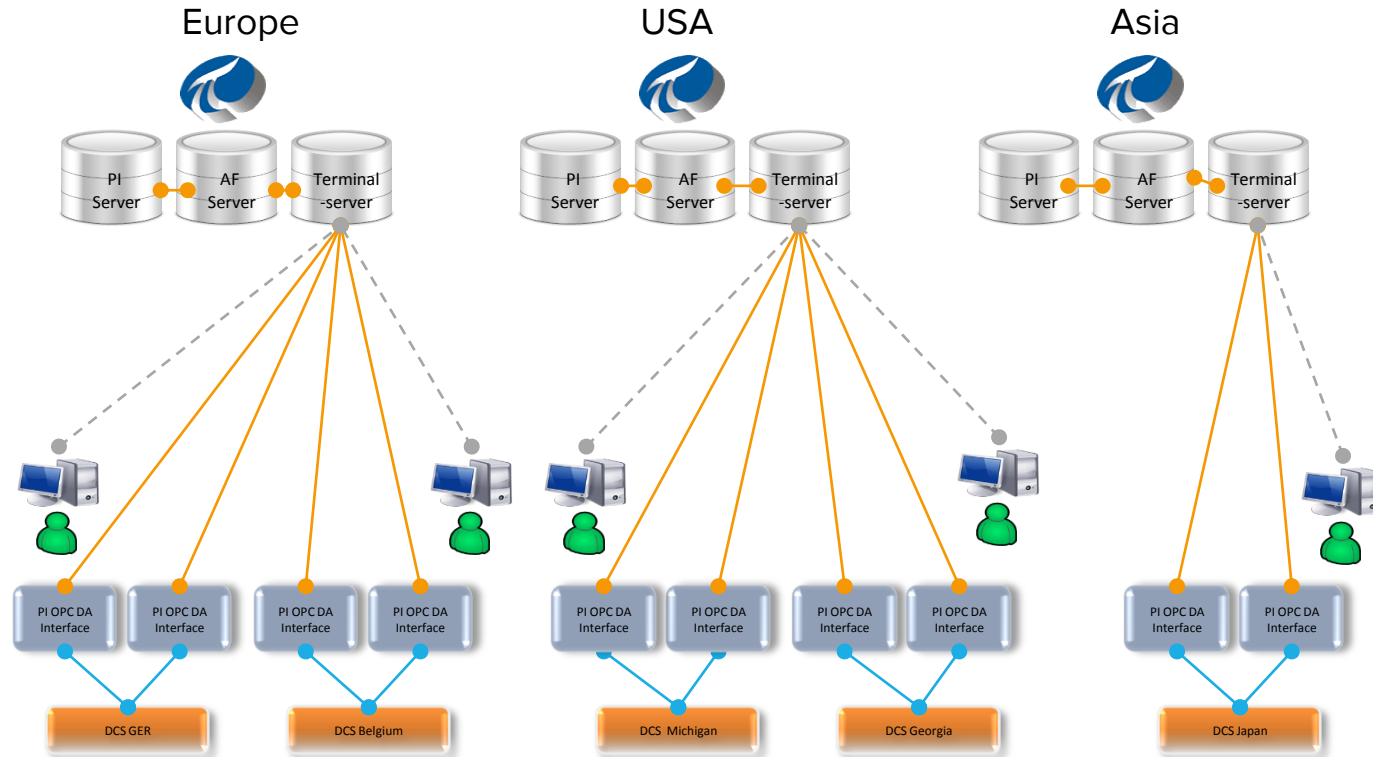
Simplified batch
analysis for quality
improvement and
batch comparison

Future tasks

- Migration strategy for batch analysis towards Asset Framework, Event Frames and PI Coresight – long-term support for PI Batch still required
- Centralized infrastructure for each continent
- Vertical integration with ERP and MES
- Detailed applications and further standardization

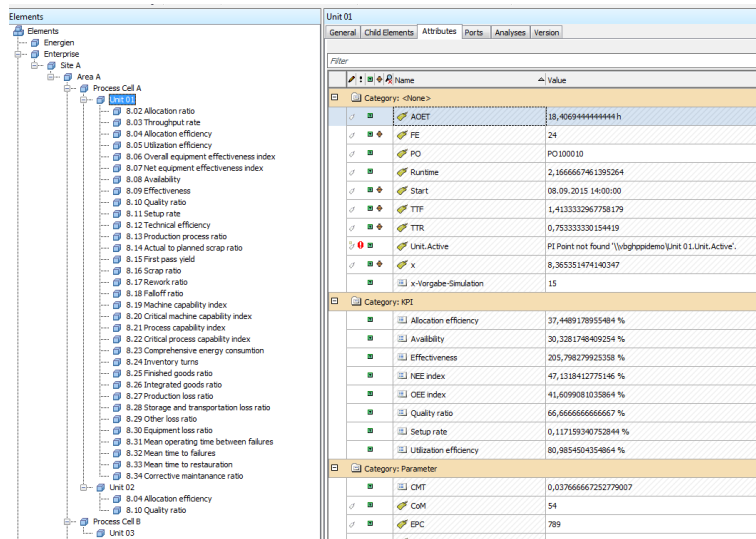


A future model for global infrastructure



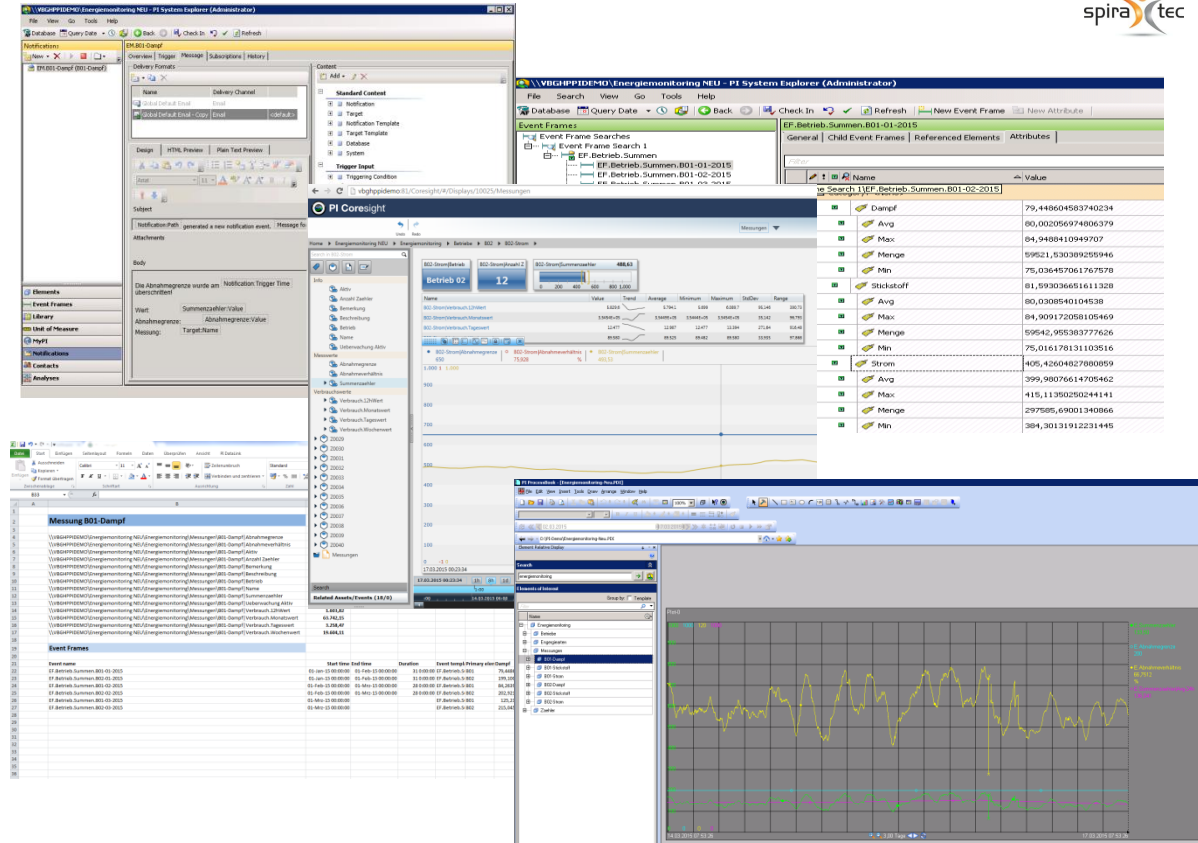
Performance management solution for global production efficiency

- Based on common, international guidelines – ISA 95, ISO 22400
- Standardized templates for AF elements, event frames and visualization dashboards
- Element structure, attributes and formula in AF and PI Analytics
- Time models and report enabling via EF and Notifications
- Reports and Dashboards via PI Coresight, PI ProcessBook and PI DataLink



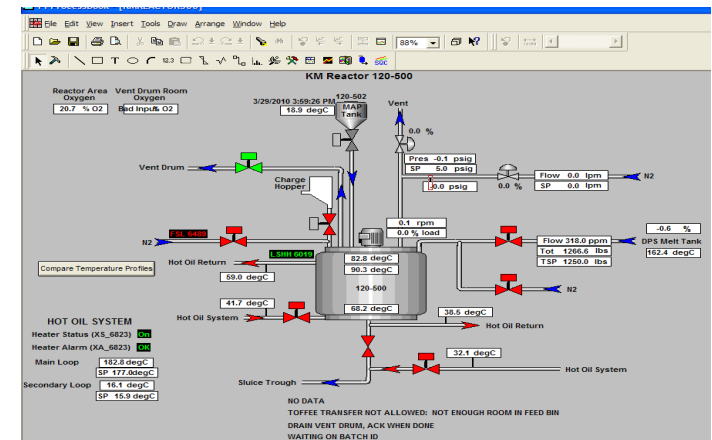
Energy management solution following ISO 50001

- Following the international standard for energy management programs - ISO 50001
- Numerous interfaces for data input from IT systems, mobile sensors, data banks, etc.
- Data structuring and calculation using templates in AF and Asset Analytics
- Pre-developed event frames for energy use cases including alarms created by PI Notifications
- Visualization and reports via PI Coresight, PI ProcessBook, PI DataLink and PI WebParts



Summary

“OSIsoft PI enables us to achieve global operational excellence by provision of real-time and batch-related data, when, where and by whom required. Thereby it contributes to our goal to be the global leading Coating Resins Company”



BUSINESS CHALLENGES

- A. Operations management initiatives for manufacturing excellence, energy management, etc.
- B. Global communication and data management required
- C. Major targets to increase asset and resource efficiency

SOLUTION

- A. Global, standardized system design with horizontal and vertical integrated IT infrastructure
- B. Production efficiency by real-time process control and comparison of worldwide plants and systems
- C. Sophisticated applications improving daily production planning and performance

RESULTS AND BENEFITS

- Centralized data platform with global access
- Improvement of quality numbers and resource consumption
- International standardization of process supervision increasing global communication
- Tangible increase in employee knowledge and effectiveness

Contact Information

Jan de Wilde

jan.dewilde@allnex.com

Global automation engineer

Allnex Corporation

Florian Spribille

florian.spribille@spiratec-ag.com

Team & Account Manager

Industrial IT Solutions

SpiraTec AG

Questions

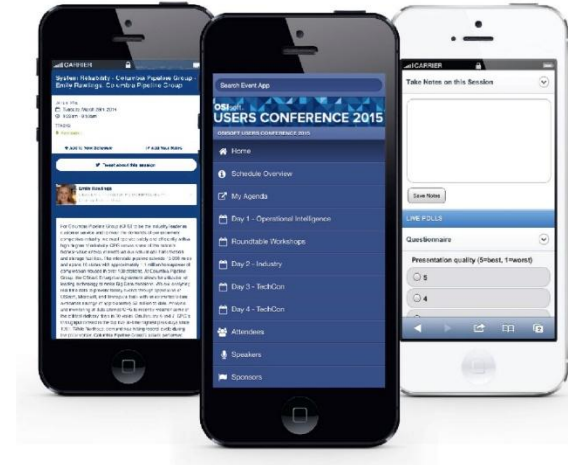
Please wait for the **microphone** before asking your questions



State your
name & company

Please don't forget to...

Complete the Online Survey
for this session



<http://eventmobi.com/emeauc15>





감사합니다

谢谢

Danke

Merci

Gracias

Thank You

ありがとう

Спасибо

Obrigado



Allnex and SpiraTec thank you for your attention

