



Complete Vertical Integration with OSIsoft's PI System to Achieve Consistent Global Quality

Presented by Martin Montag, Atotech
Jochen Fries, SpiraTec



Agenda

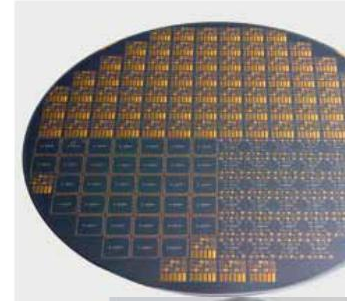
- About Atotech and SpiraTec
- Business objectives and challenges
- Project approach
- Solution outline
- Why the OSIsoft PI System?
- Conclusion
- Outlook



About Atotech

About Atotech

- One of the world's leading suppliers of specialty chemicals, equipment, service and solutions for printed circuit board manufacturing and advanced packaging (electronics), as well as decorative and functional surface finishing (general metal finishing).
- Operating with fifteen chemistry production sites across the world.



About Atotech



- Since we operate several chemical plants ww we have a global approach for our “MES” system
- Central systems and local systems
- Pilot in Germany

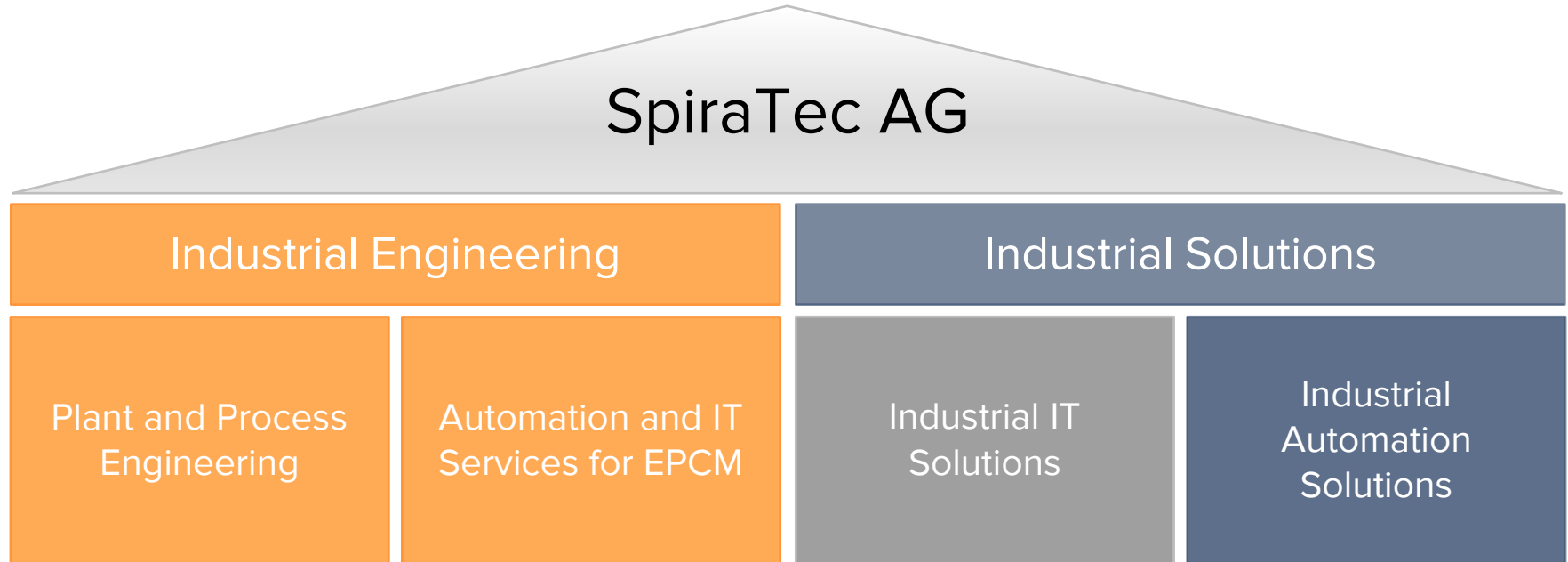


About SpiraTec

About SpiraTec

- **Headquarters** Speyer – Germany
- **Branches** Germany, Austria, USA
- **Foundation** Nov. 2007
- **Board of management** Andreas Schadt - CEO, Frank Heines – CEO
- **Employees** Extension to more than 180 employees in less than 8 years
- **Company claim** **Industrial Engineering and Solutions for manufacturing excellence**
- **Target markets** Europe, USA, Arabic Gulf States
- **Customers** TOP 100 companies of the process and discrete industry and international plant construction
- **Systems** Production management and process control systems
Implementation of systems of leading suppliers from Europe, USA and Asia.
Generation of integrated solutions for notable customers worldwide
- **Our services** IT and automation consulting, engineering, system integration and services for operating production plants.

Overview of Business Segments







Business objectives and challenges

Business objectives and challenges


- The main drivers behind the project




Increase quality




Traceability
(Substance tracking)




Analytics
(SPC, Batch reports,
„Golden Batch“)




Higher level of
standardization




Higher level of
automation



Connection between
ERP and shop floor



Automated collection
of production data
(Process)



Rollout capability to
other sites across the
world

Business objectives and challenges

- Challenges

Data privacy
(Data security)



Robust system and network
infrastructure



IP protection
(Obfuscation of production recipes)



A lot of interdisciplinary work
packages during the project





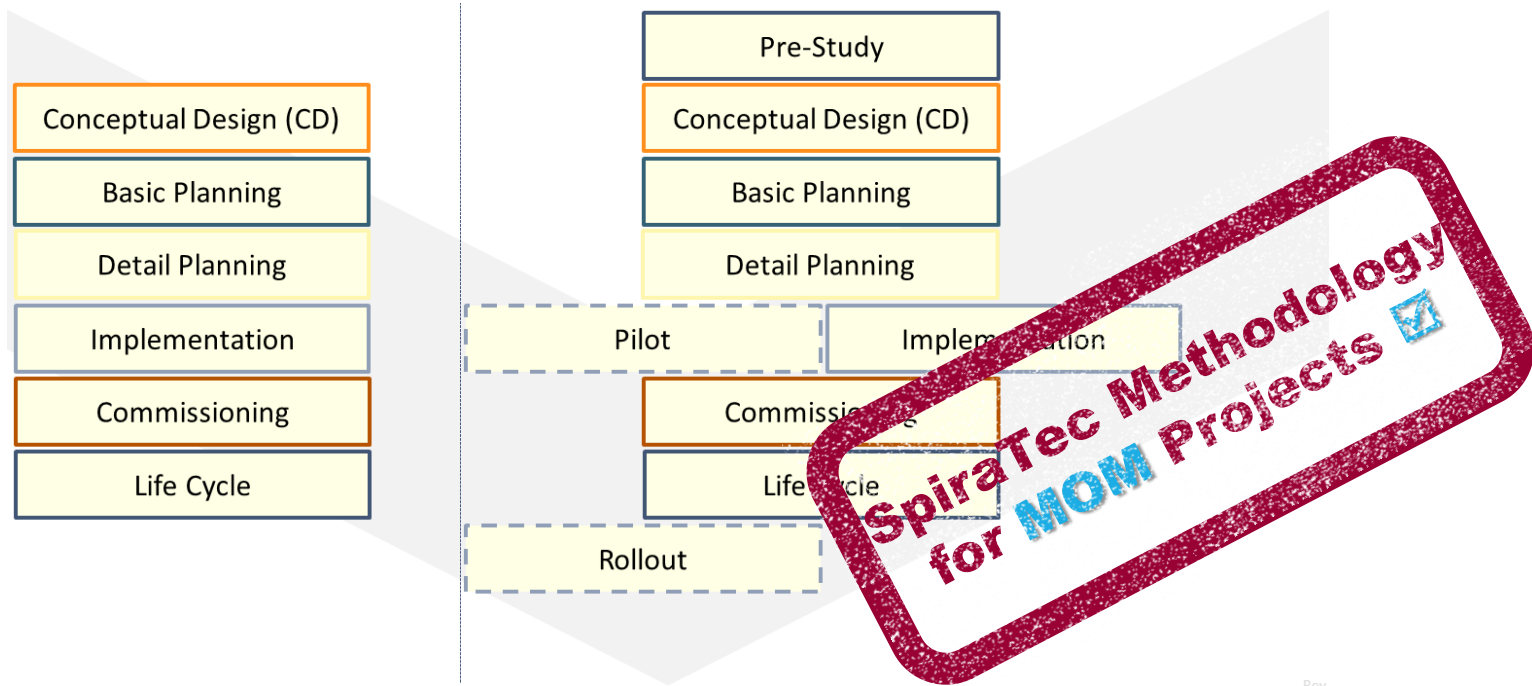
Project approach

Project approach

- Atotech implemented the project using several suppliers with SpiraTec as main SI (System Integrator)
 - Staffing of the project team
 - Selection of system suppliers
 - Identification of project standards
 - Design of target system landscape
 - Implementation, testing, Commissioning/Go Live

Project approach

- Methodology





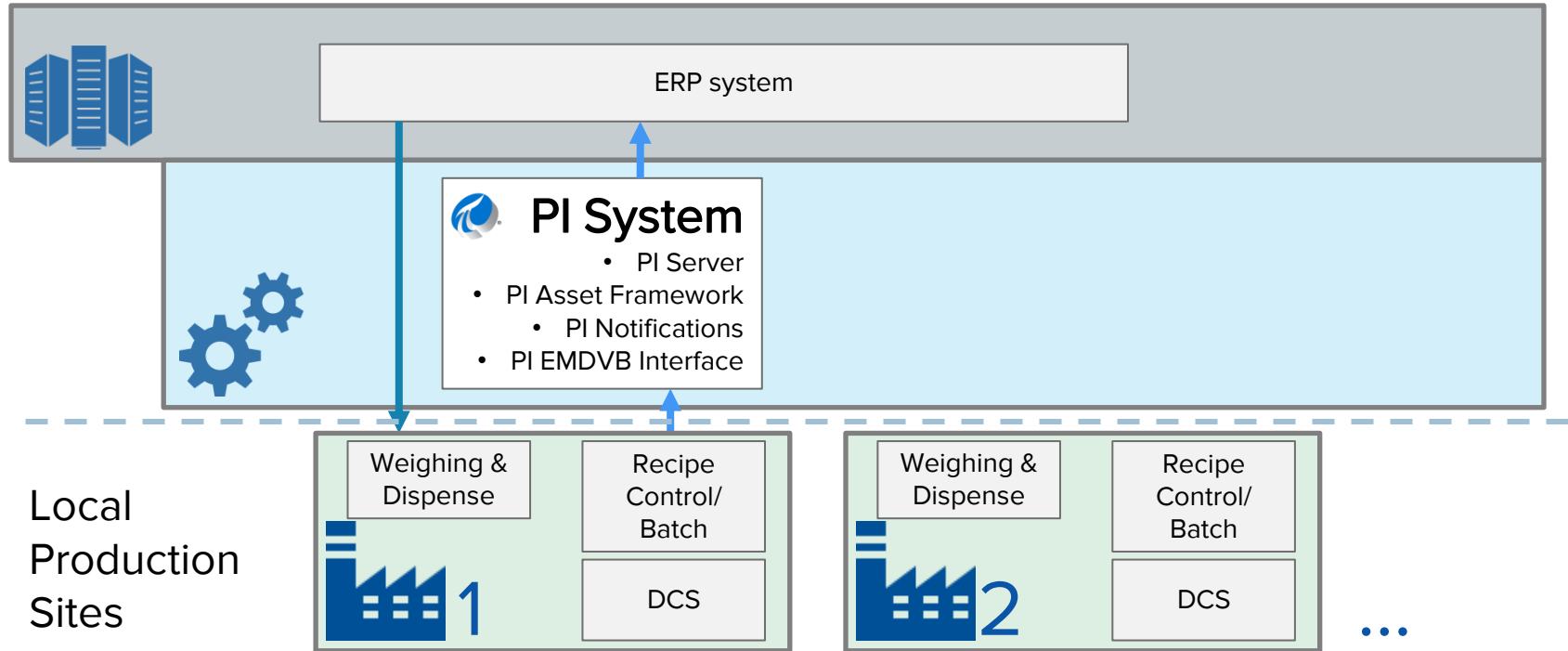
Solution outline

Solution outline

- Centralized and de-centralized (local) systems
 - Collaboration
 - Intelligent systems perform important tasks on shop floor level
 - Centralized enterprise systems for infrastructure services and other core services
 - Creation of an “Enterprise Data Hub” for Manufacturing related analysis and functions (MOM Apps)

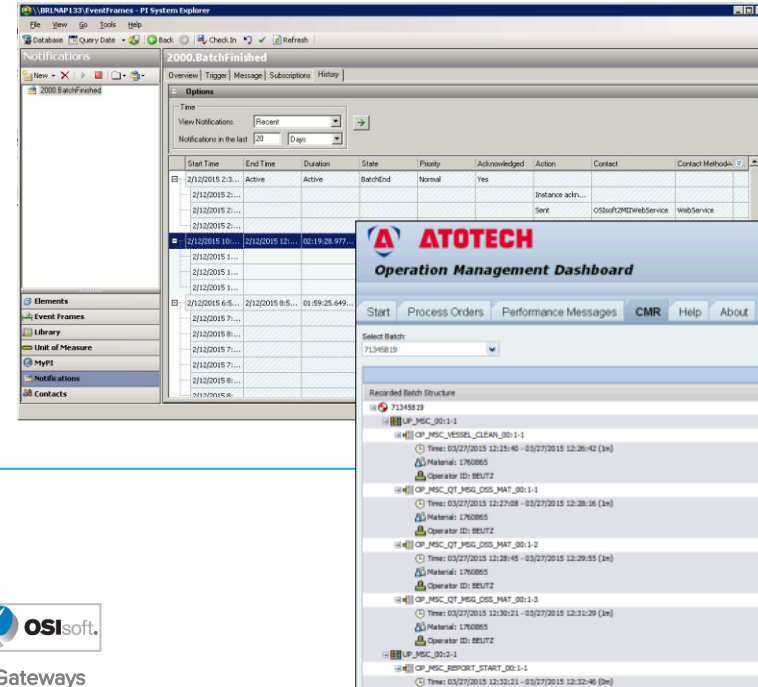
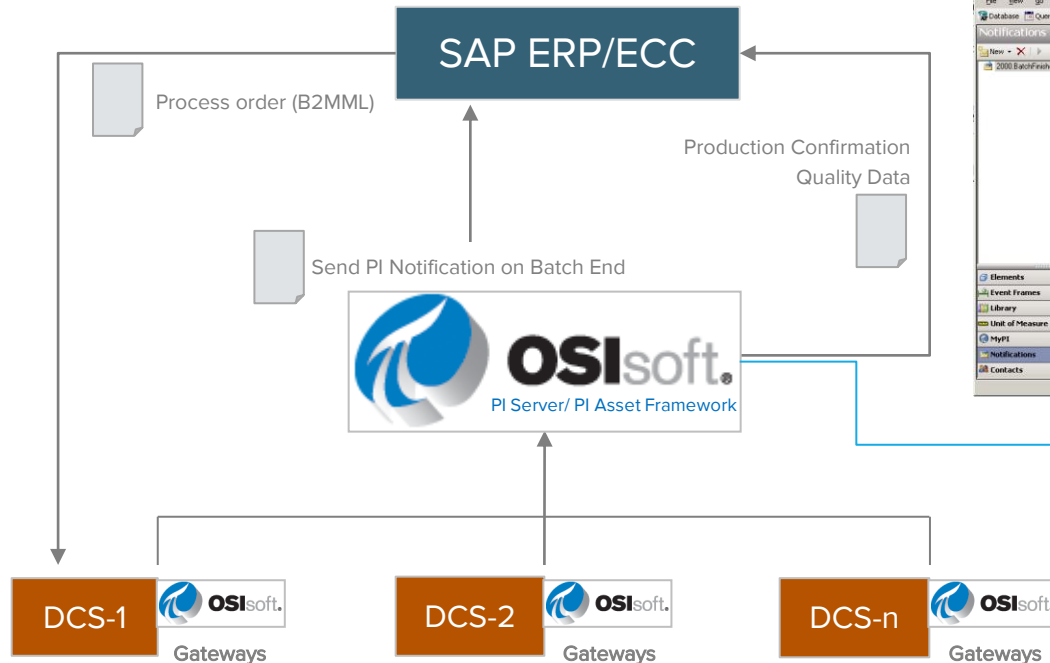
Solution outline

- System architecture



Solution outline

- Centralized and de-centralized (local) systems





Why the OSIsoft PI System?

Why the OSIsoft PI System?

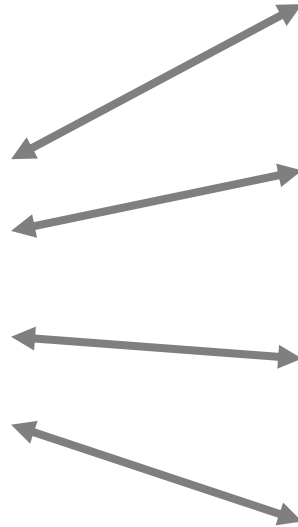
- The OSIsoft PI System is flexible and gives Atotech the possibility to link production data with ERP data.
- It's now possible to analyze in-depth the production Batches and to compare them across multiple sites.
- This gives us valuable insights to increase our product quality.
- We closed the gap between top and shop floor.



Conclusion

Conclusion

- Conclusion



≡ Standardized Performance Management

≡ Statistical evaluations and reporting (focus on quality)

≡ Integration of other data sources

≡ Contextual link between ERP and production data



Outlook

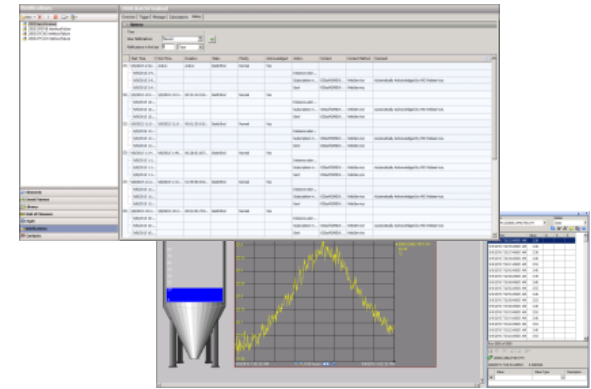
Outlook

- Roll-out to more production sites (Malaysia is ongoing)
- Bringing more users to the system (trainings)
- Extending the client's functionality (PI ProcessBook)
- Using the new PI ProcessBook Client
- Extended functionality (Added Value MOM services)
- Implementing Event Frames for KPI management

Summary

Atotech: Using the PI System gives us the desired flexibility and transparency to leverage the quality and automate the communication between production and the ERP world.

Martin Montag
Atotech Deutschland GmbH



BUSINESS CHALLENGES

- Increase production quality
- Gain production insights
- Closing the gap between top and shop floor

SOLUTION

- Enterprise agreement with OSIsoft to provide complete infrastructure connectivity
- Introduced the PI System as real time data infrastructure with its powerful analytical capabilities
- ERP connectivity from the PI System to SAP ECC using SAP MII

RESULTS AND BENEFITS

- Cross-plant analytics
- Vertical integration
- Higher automation, digitally connected
- Rollout capability

Contact Information

Martin Montag

martin.montag@atotech.com

Team Leader Industrial IT

Atotech Deutschland GmbH



Jochen Fries

jochen.fries@spiratec-ag.com

Team and Account Manager

SpiraTec AG



Questions

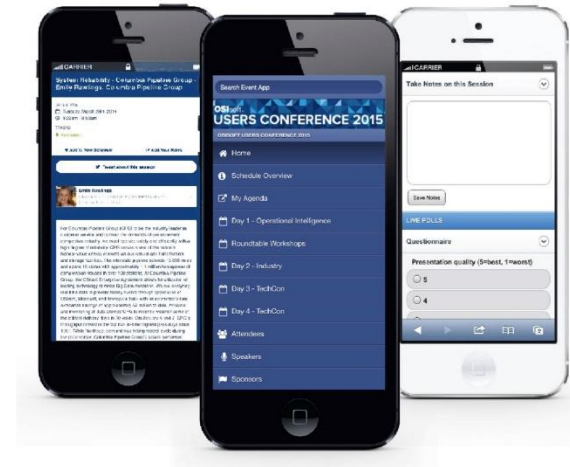
Please wait for the **microphone** before asking your questions



State your
name & company

Please don't forget to...

Complete the Online Survey
for this session



<http://eventmobi.com/emeauc15>



감사합니다

谢谢

Danke

Merci

Gracias

Thank You

ありがとう

Спасибо

Obrigado