



# Bring Your Maps to Life with Real-Time GIS

**Kevin Doughty**

# Esri UK in water



- 2014 Dee Valley Water
- 2012 United Utilities (Corp GIS)
- 2010 Bournemouth and West Hampshire Water (Mobile)
- 2009 South East Water (Corp GIS)
- 2009 Bournemouth and West Hampshire Water (Corp GIS)
- 2009 South Staffs Water (Maximo)
- 2008 Affinity Water (formerly Veolia Water UK) (Corp GIS)
- 2008 Dwr Cymru Welsh Water (Corp GIS, SAP )
- 2006 Mid Kent Water (GIS and Network Analysis)
- 2005 Thames Water (Corp GIS, Oracle Spatial, Risk Analysis)
- 2001 Portsmouth Water (Network Maintenance)
- 2000 United Utilities (Field GIS Application)
- 2000 Anglian Water (Integrated Network Management)
- 1998 Thames Water (Mains renewals)
- 1998 Severn Trent Water (Network Maintenance)
- 1997 Wessex Water (Network Maintenance, mobile)



formerly Veolia Water 



south east water

anglianwater



Bournemouth & West Hampshire  
WATER

Dwr Cymru  
Welsh Water



Our managers monitor our mobile workforce and network assets in real time with **Operations Dashboard**



Our field data workers collect network asset data with **Collector for ArcGIS**



Our GIS professionals manage our network data in **ArcGIS for Desktop**



## ArcGIS for Water Utilities



ArcGIS Online / Portal for ArcGIS

Staff login to our portal to find data, create maps and share them with their colleagues



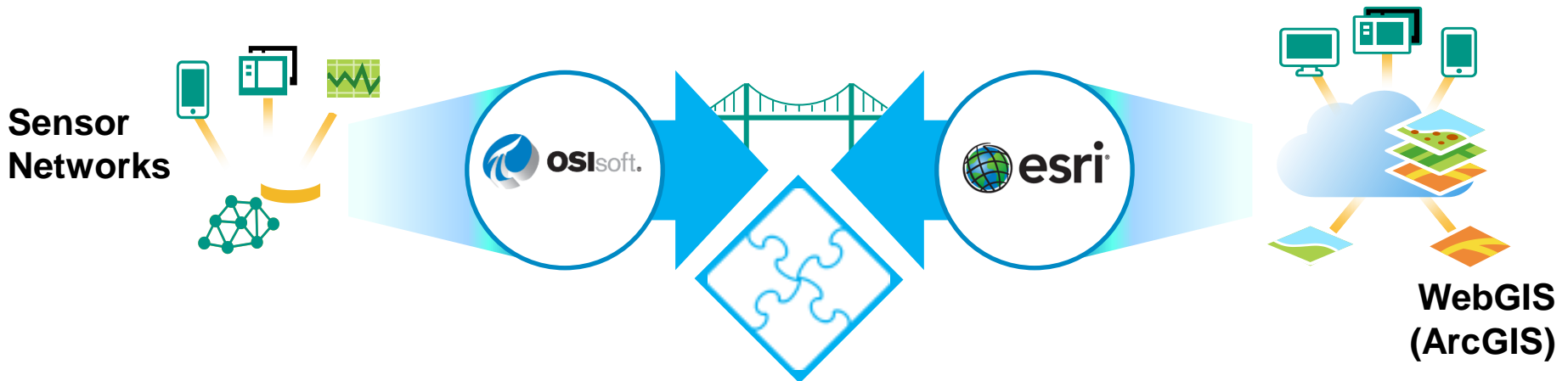
We store our data in enterprise geodatabases in industry standard RDBMS



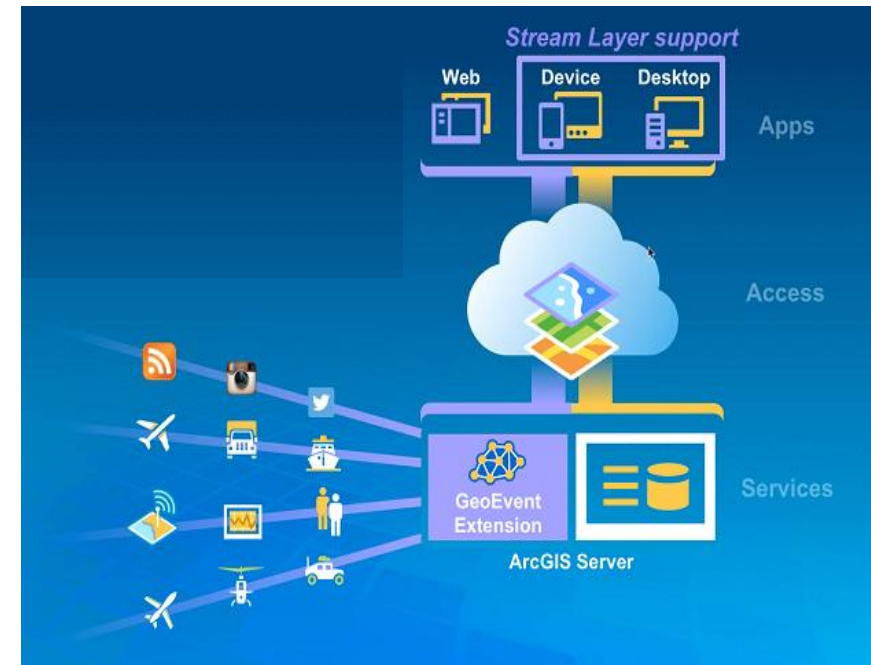
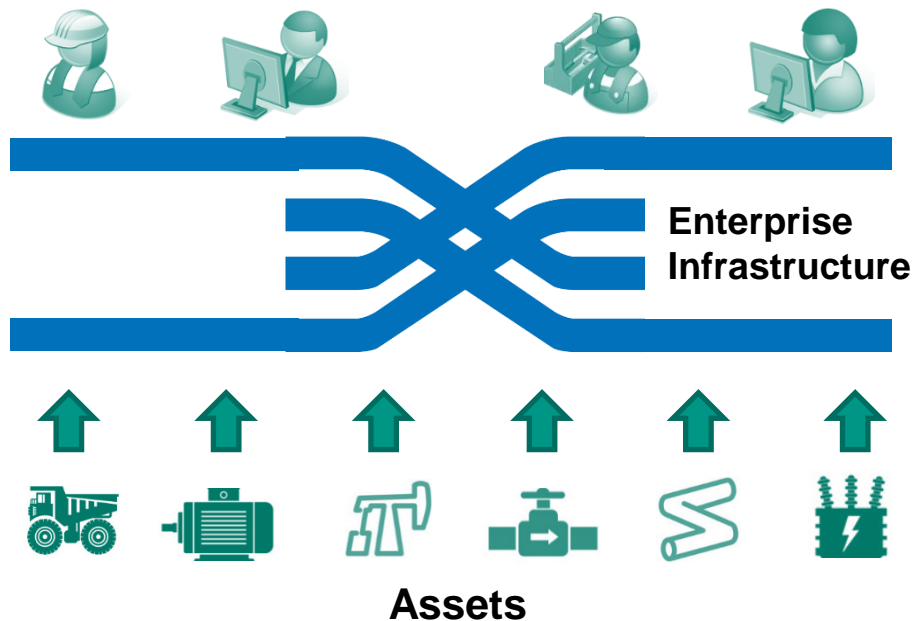
We use **ArcGIS for Server** with **GeoEvent Extension** to publish operational & basemap data for staff to use and so we can **consume real-time data feeds**

# Two Companies One Vision:

We believe data in the hands of smart people can create amazing insights, business improvements, and value



Connect the right data to the right people in the right context for the right decisions in real-time



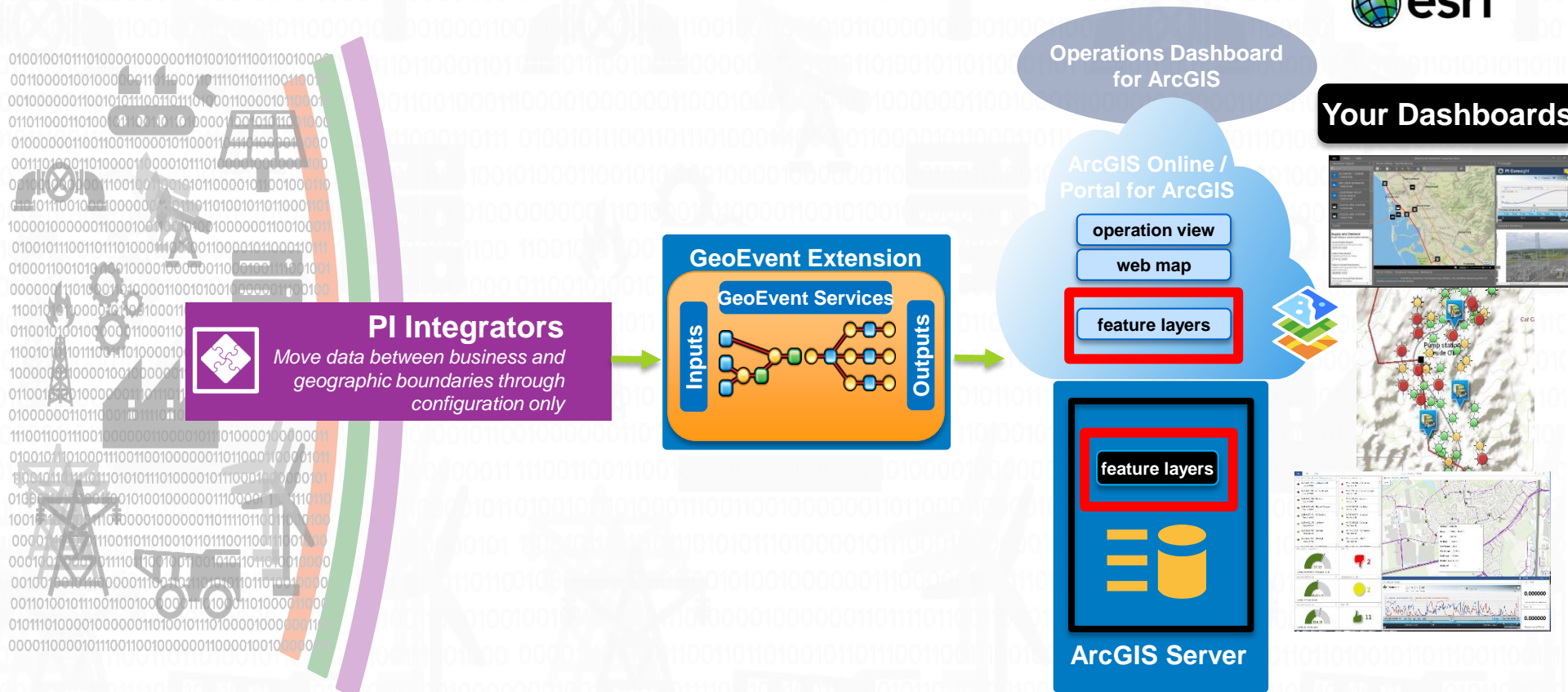
**Usable | Actionable | Accountable**

A strategy for making actionable decisions as an organization

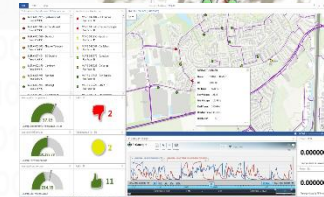
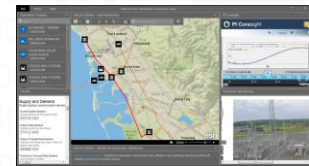


# Boundless

## Open data Export



### Your Dashboards



PI Interfaces  
PI Server  
PI Tools

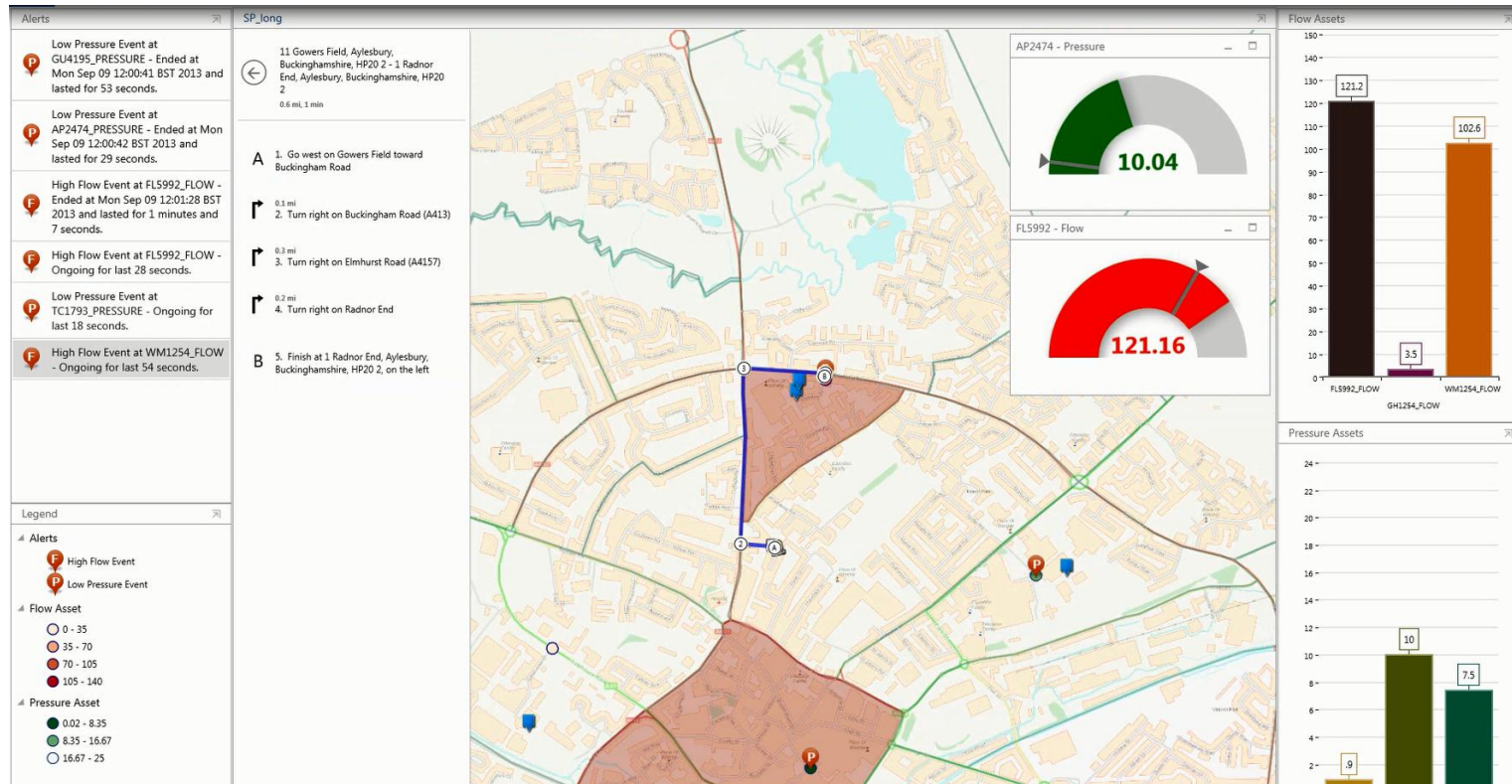
**Let's take a look:**

## **Video: PI System & Esri Integration (Pipeline Networks)**



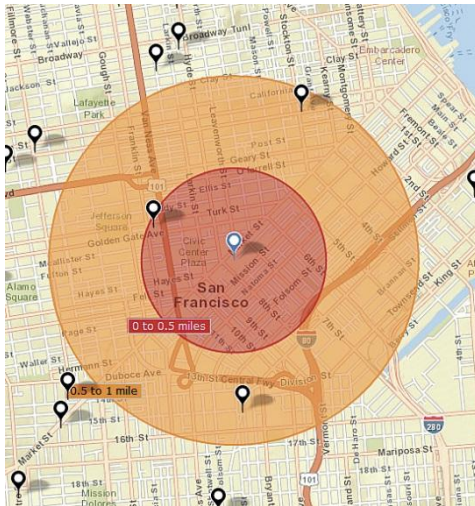
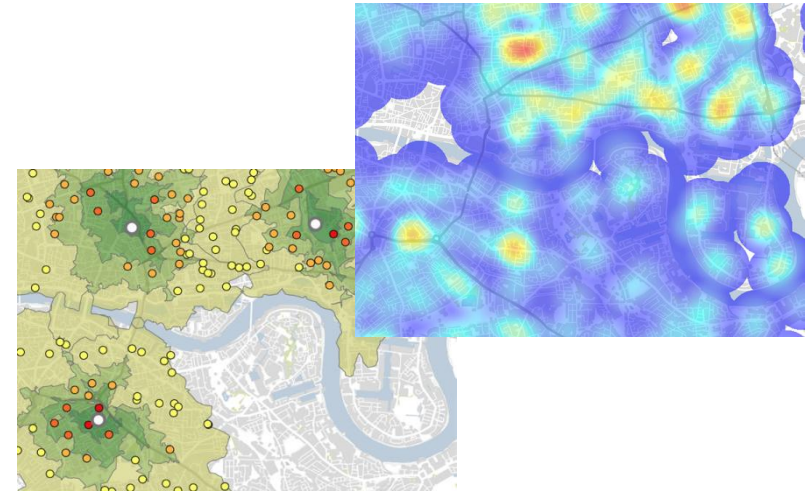


# Improving Process & Operational Workflows



# Historical, Operational, predictive

- Situational Awareness
- Operational Excellence
- Asset Performance monitoring
- Condition Based Maintenance
- Field Maintenance Optimization
- Shipping and Transport Logistics



- Weather feeds
- Real-time Status of Distributed Assets
- Regulatory Compliance
- Environmental, Health & Safety
- Reliability

# Benefits

- Delivers **better decision making** based on most current data
- Delivers **improved decision making** Geographic context
- OSIssoft delivers an **out-of-the-box integration** from the PI System to the Esri ArcGIS platform
- **Saves the money, risk and ongoing maintenance cost** of developing on your own
- **Fully supported** by OSIssoft globally
- Supports the **enterprise Geographic Information System** as opposed to desktop and point solutions

# Thank you

Kevin Doughty

[kdoughty@esriuk.com](mailto:kdoughty@esriuk.com)

<http://www.esri.com/osisoft>

<http://www.osisoft.com/corporate/gis/index.html>