

Information on the spot – PI data on my device.

Presented by **Bachir El Tannir**



INDUSTRY FORUM

Unlimited Access to Your Data

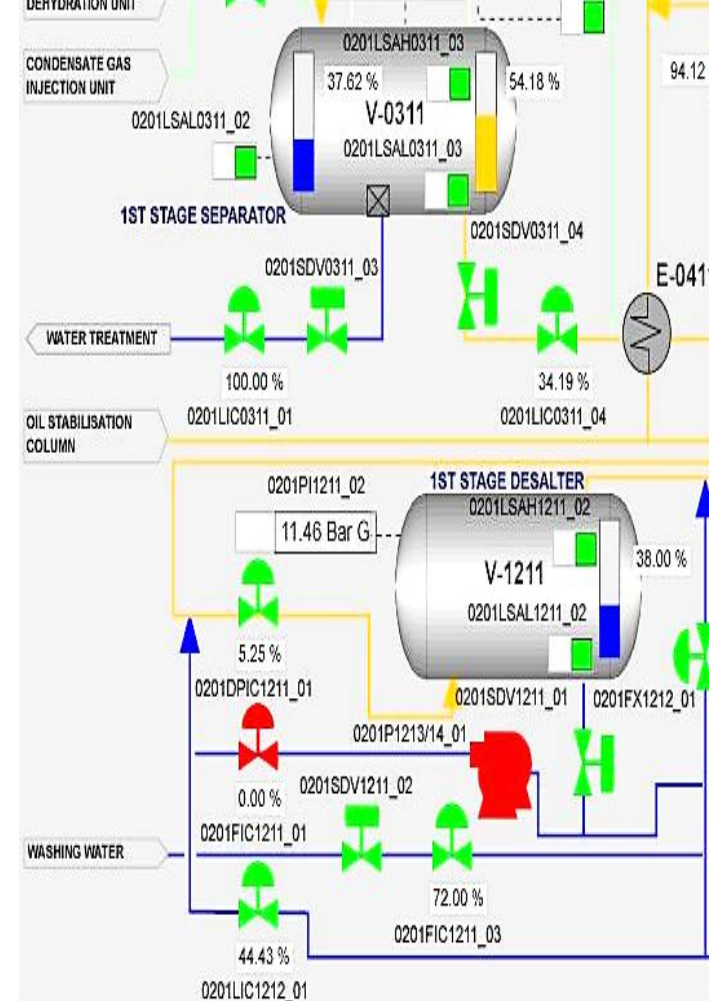
- The PI Visualization Suite puts **every PI System visualization tool** at your fingertips



- Allows **everyone** to **collaborate** with data to **drive innovation** and for **data-driven decision making**
- The **PI Visualization Suite** unlocks PI System **data sharing** across your business to **empower your enterprise**

PI ProcessBook

- Display **real-time** and **historical** data
 - Process representation
 - **Trend** with traces
 - Context management with **PI AF**
 - **Replay** problematic events
 - **Drill-down** capabilities

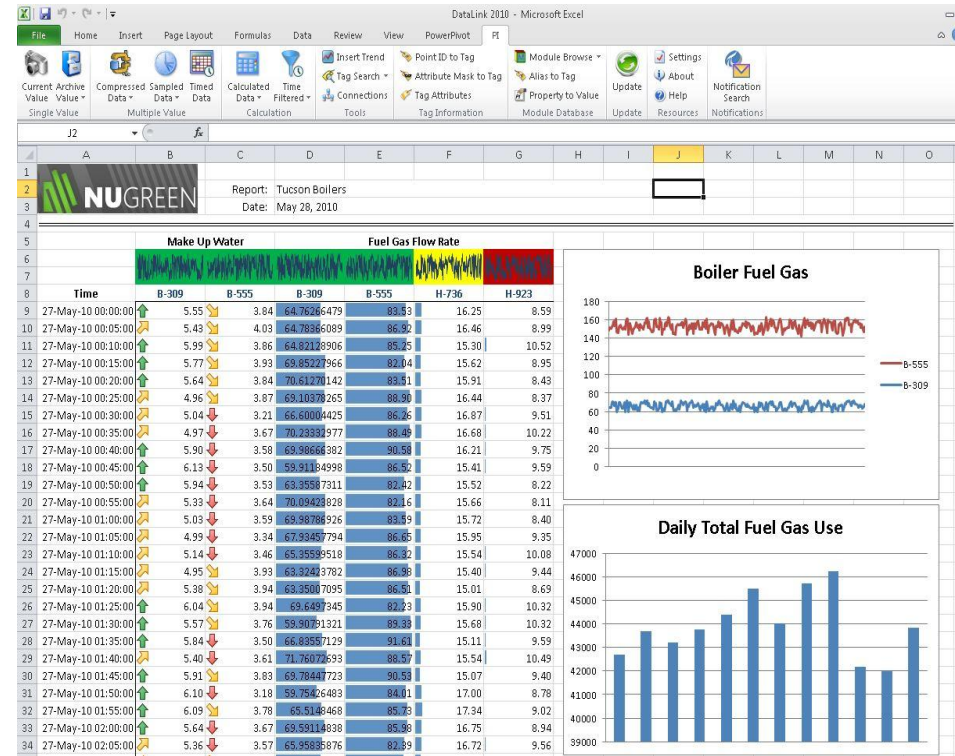


PI DataLink

Add-in to **Microsoft Excel**

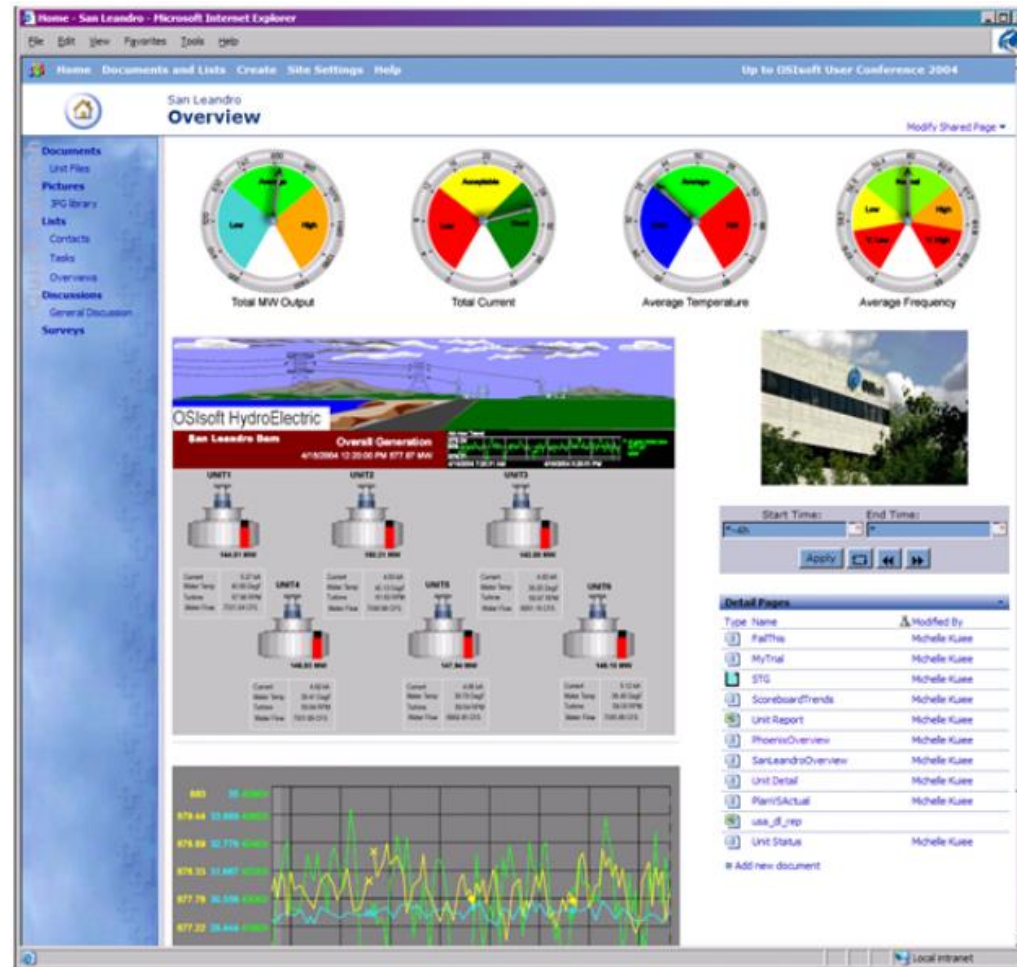
- Create reports
- Apply calculations
- Retrieve data

OSIsoft's most popular product by installations



PI WebParts

- Visualize live real time data from the PI Server in **SharePoint** sites
- Used to build **dashboards** to be **shared across the enterprise**
- Deliver high-level, **operational visibility** through a single portal environment gathering data from a wide **variety of sources**



What is PI Coresight?

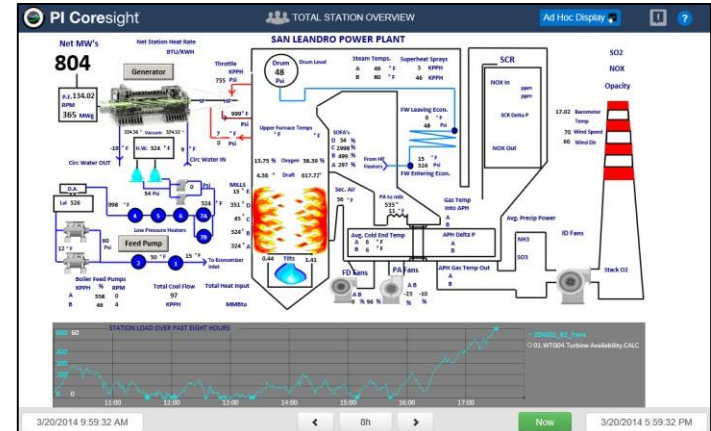
A web-based product for:

- Ad-hoc analysis
- Quick investigation
- Collaboration
- Rapid deployment



PI Coresight 2014

Ad hoc analysis + authored displays



PI Coresight 2014

Transitional release with Big New Features

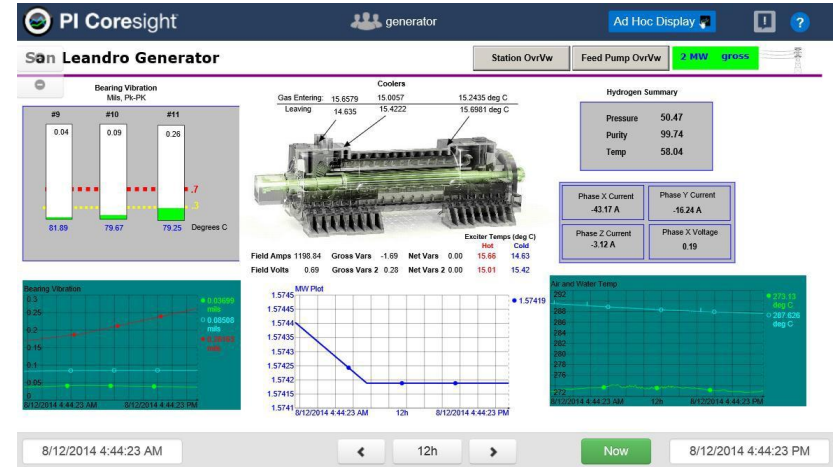
- Moving from desktop browser only to phone, tablet, and desktop
- Making PI ProcessBook displays available on new devices and combine them with new visualization tools
- Improving performance and scalability

PI Coresight 2014

I need to access my graphic displays and real-time data using any modern browser so that I can troubleshoot problems without special software installed.

PI ProcessBook Display Viewing

- Viewable on any modern browser
- Displays organized by import folder
- No special software needed on the client machine



DEMO

San Leandro Generator

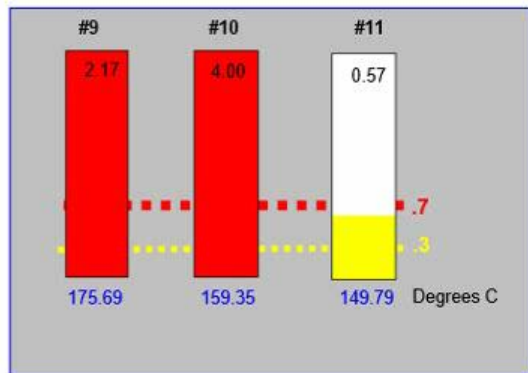
Station OvrVw

Feed Pump OvrVw

415 MW gross

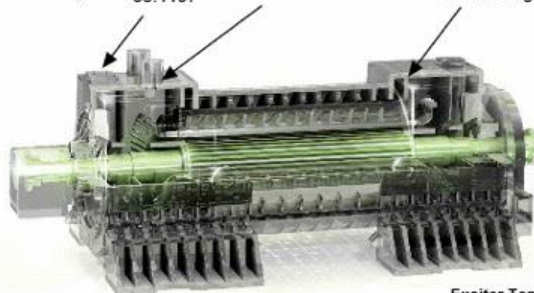


Bearing Vibration
Mils, Pk-PK



Coolers

Gas Entering:	41.0442	43.2864	47.163 deg C
Leaving	33.1197	30.7904	30.815 deg C



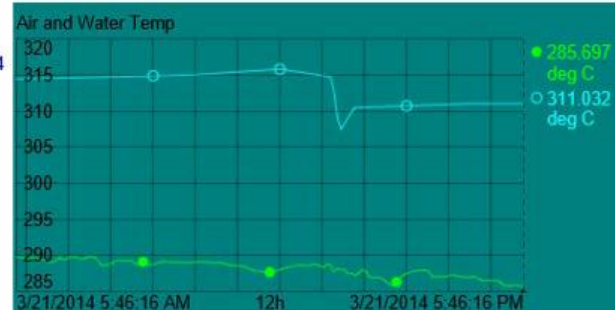
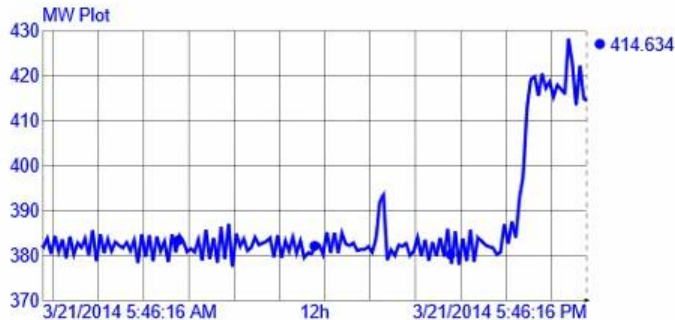
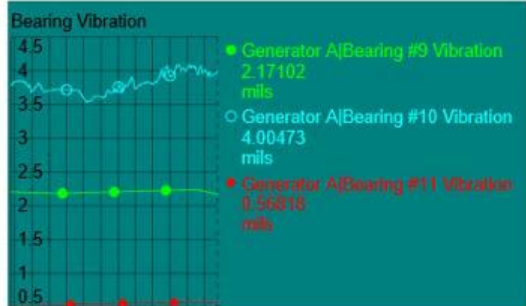
Hydrogen Summary

Pressure	58.45
Purity	99.74
Temp	100.25

Phase X Current 10004.75 A	Phase Y Current 10120.26 A
Phase Z Current 9837.21 A	Phase X Voltage 114.22

Exciter Temps (deg C)

Field Amps	2927.26	Gross Vars	89.45	Net Vars	84.24	Hot	41.04	Cold	33.12
Field Volts	225.75	Gross Vars 2	89.77	Net Vars 2	82.82		43.29		30.79



Difference between web and native viewing

Not supportable on the web:

- VBA script
- ActiveX Controls

Different interaction:

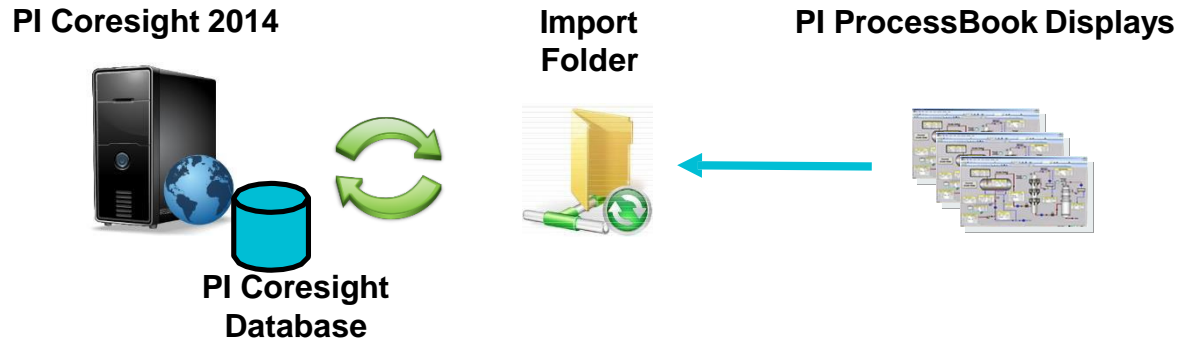
- One time range
- Element Relative Displays with URL

Not in PI Coresight 2014:

- Trend Cursor, Trend Zoom
- Unsupported Symbols
 - Batch View
 - SQC Chart
 - XY Plot
 - Logarithmic scale
 - Regression line on a trend
- ODBC datasets

Easily Make Displays Available

- Save PI ProcessBook file in PDI or SVG format
- Automatically organized by folder structure
- Displays are automatically imported and/or updated



DEMO

PI ProcessBook - [Area 1 Turbines]

File Edit View Insert Tools Draw Arrange Window Help

3/19/2014 3/21/2014

Turbine Overview

Unit	Type	Duct Burner	Gross mW	Heat Rate	Fuel Gas	Comp In T		
Unit 1	Gas	1010 MMBtu	166 mW	8995 Btu/kWh	1010 MMBtu/Hr	156 Deg F		
Unit 2	Gas	1001 MMBtu	543 mW	9798 Btu/kWh	1001 MMBtu/Hr	142 Deg F		
Unit 3	Steam	-	366 mW	-	-	-		
Plant Output (mW)			Gross Power	1080	Parasitic Load	0	Net to Market	1080

Ambient Conditions	
Temperature	92.4 Deg F
Barometric Pressure	29.3 in Hg
Humidity	35.7 %

Fuel Rates (MMBtu)	
Site Fuel Energy	3900
Fuel Use Today	27300
Fuel Use Yesterday	43400

Heat Rates (Btu / kWh)	
Gross Heat Rate	9975
Net Heat Rate	10100
Steam Adj. Heat Rate	6750

Ready Server Time NUM

PI Coresight - Internet Explorer

http://cs2014beta/Core PI Coresight

Turbine Overview

Unit	Type	Duct Burner	Gross mW	Heat Rate	Fuel Gas	Comp In T		
Unit 1	Gas	1010 MMBtu	166 mW	6995 Btu/kWh	1010 MMBtu/Hr	156 Deg F		
Unit 2	Gas	1001 MMBtu	543 mW	9798 Btu/kWh	1001 MMBtu/Hr	142 Deg F		
Unit 3	Steam	-	366 mW	-	-	-		
Plant Output (mW)			Gross Power	1154	Parasitic Load	73.4	Net to Market	1080

Ambient Conditions	
Temperature	92.4 Deg F
Barometric Pressure	29.3 in Hg
Humidity	35.7 %

Fuel Rates (MMBtu)	
Site Fuel Energy	3900
Fuel Use Today	27300
Fuel Use Yesterday	43400

Heat Rates (Btu / kWh)	
Gross Heat Rate	9975
Net Heat Rate	10100
Steam Adj. Heat Rate	6750

Plant Output (mW)	
Gross Power	1154
Parasitic Load	73.4
Net Power	1080

8h Now

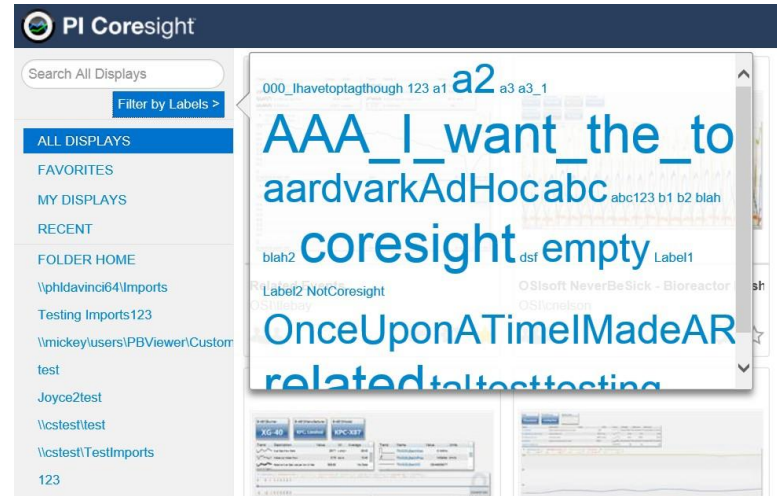
3:12 PM 3/21/2014

PI Coresight 2014

I need to quickly filter the list of displays to see only the ones I am interested in so I don't waste time hunting for what I want.

New Home Page

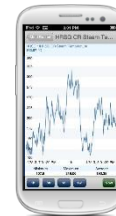
- Available using any modern browser
- Find and open native Coresight or PB displays
- Organize displays with folders or labels
- Administrator can manage any display



PI Coresight on mobile devices

Quickly Find and Use PI Data using Small Form Factor Devices

- Fast and easy access to PI System data
- View PI ProcessBook displays
- Designed for small screens
- Viewable on any device

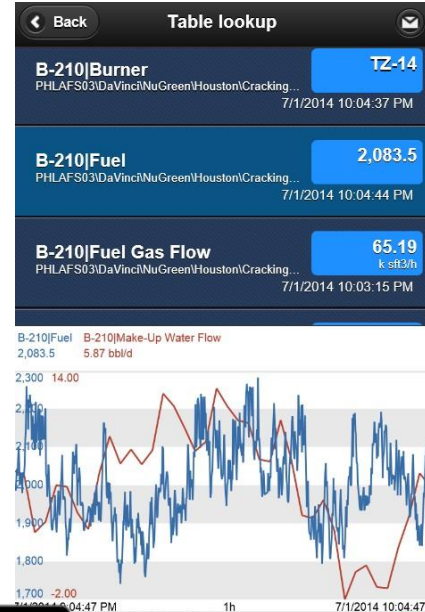


PI Coresight 2014

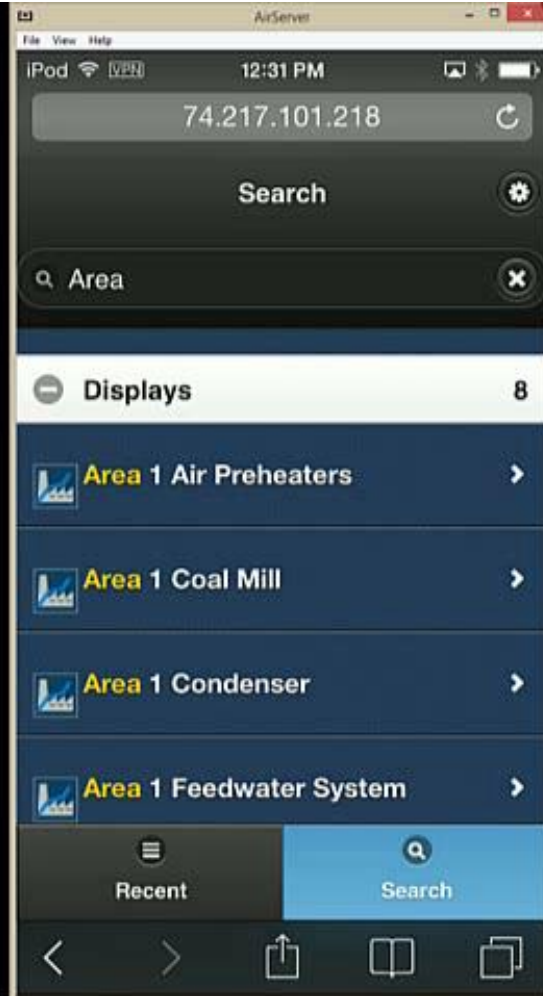
I need access to my data and displays from anywhere and with any device, so I can solve problems even before I get there.

Mobile site

- Automatically displayed on small screen devices
- Find and display native Coresight and PB displays
- Full display, data item, and asset search



DEMO



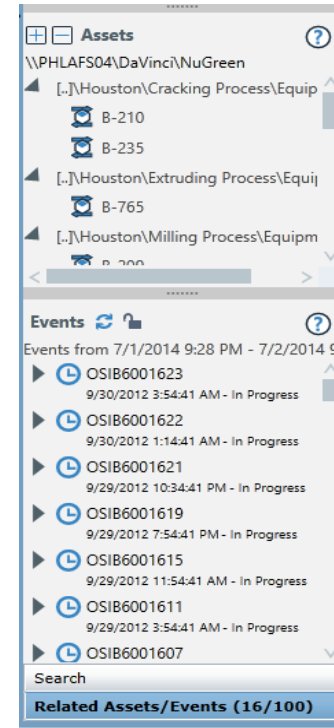
10

PI Coresight 2014

I need to search against millions of assets or events and return search results within seconds so I can solve problems in a timely manner.

Search service

- Returns search results in a fraction of the time compared to previous versions
- Functional with larger AF and EF databases
- Infrastructure to deliver new abilities

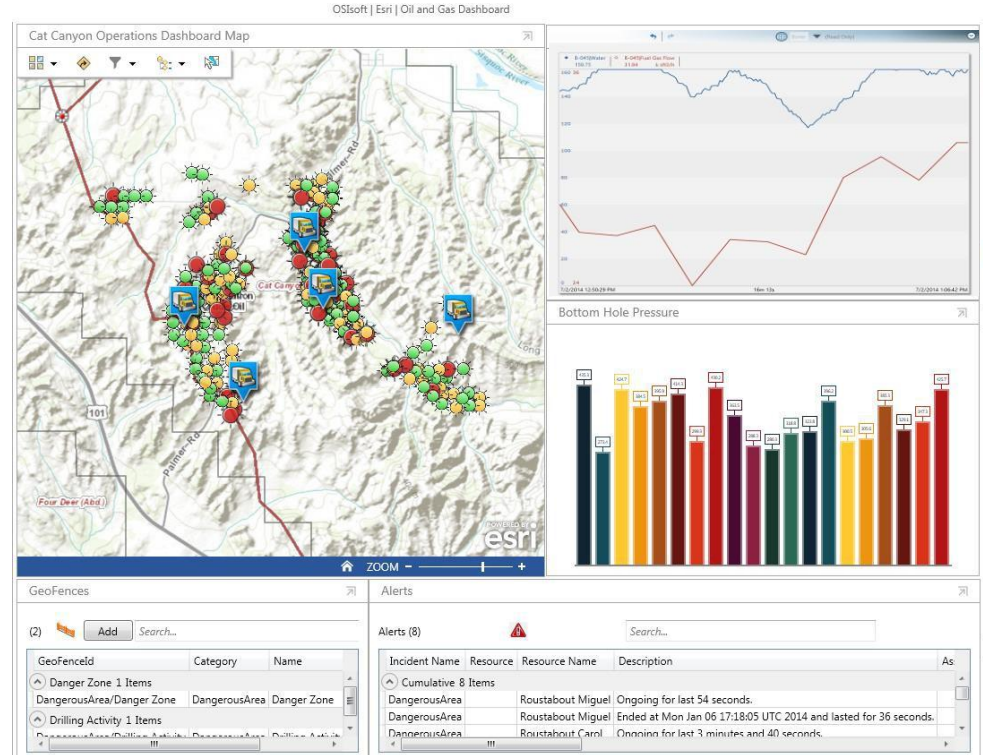


PI Coresight 2014

I need to integrate PI Coresight with business applications and portal sites to get a complete view of operations.

New URI parameters

- Hide Toolbar, Timebar
- Set element of interest for PB displays
- Set time zone for the current display



What works where?

Desktop browser
only



Displays built in
PI Coresight

Any modern browser



Homepage



Mobile site



PB Displays


Native Apps




iPad
iPhone

	2014		2015		FUTURE
	1H	2H	1H	2H	See PI System Roadmap on Tech Support site for updates

 **PI Coresight 2013**
Related Events

 **PI Coresight 2014**
*PI ProcessBook
Display Viewing
Mobile web site*

 **PI Coresight 2015**
*Future Data support
Overlay trend and asset
comparison table*

NOTE: Future dates & plans are subject to change. Last Updated: 09-20-2014

Bachir El Tannir

meltannir@osisoft.com

Projects Manager, Systems Engineering
OSIsoft, UAE

THANK YOU

Brought to you by  **OSIsoft.**