

OSIsoft Regional Transportation Workshop

24 September 2015

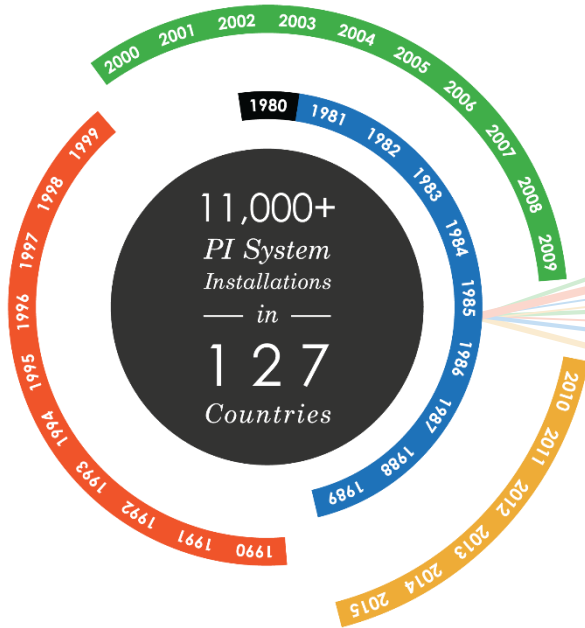




We believe **People** with **Data** can **Transform** their world



A Unique and Proven Vision



For over 30 years OSIssoft has:

- Infrastructure for consolidation and centralization of sensor based data
- Open infrastructure to support best of breed ecosystems
- Scalability from small deployments to enterprise deployments
- Infrastructure for change
- Infrastructure for empowering people



OSIssoft.

Empowering Business in Real-Time.

© Copyright 2015 OSIssoft, LLC

What is an Infrastructure?

in·fra·struc·ture [in-fruh-struhk-cher]

“It can be generally defined as the set of **interconnected structural** elements that provide **framework supporting** an entire structure of development¹”

Traits of an Infrastructure



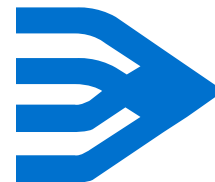
Obd
device/
car



Reliability
Security
Extensibility
Agility



Scalability
Availability
Connectivity
Simplicity



\$ new business
- Warranty
- Cond. Maint
- Integration
with dma
systems



OSIsoft.

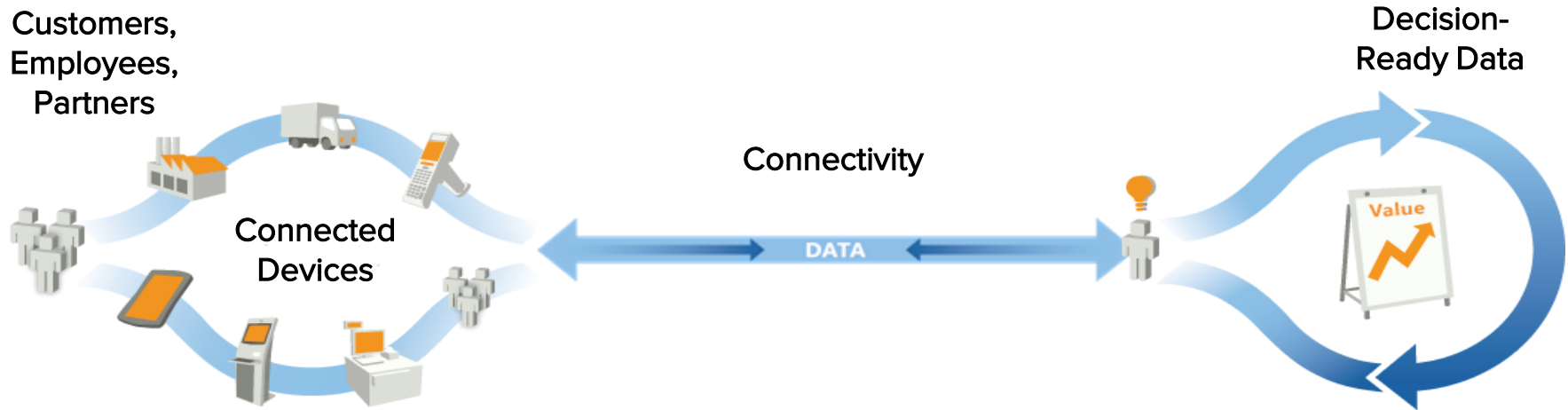
Empowering Business in Real-Time.

¹ Online. January 7th 2014. <http://en.wikipedia.org/wiki/Infrastructure>

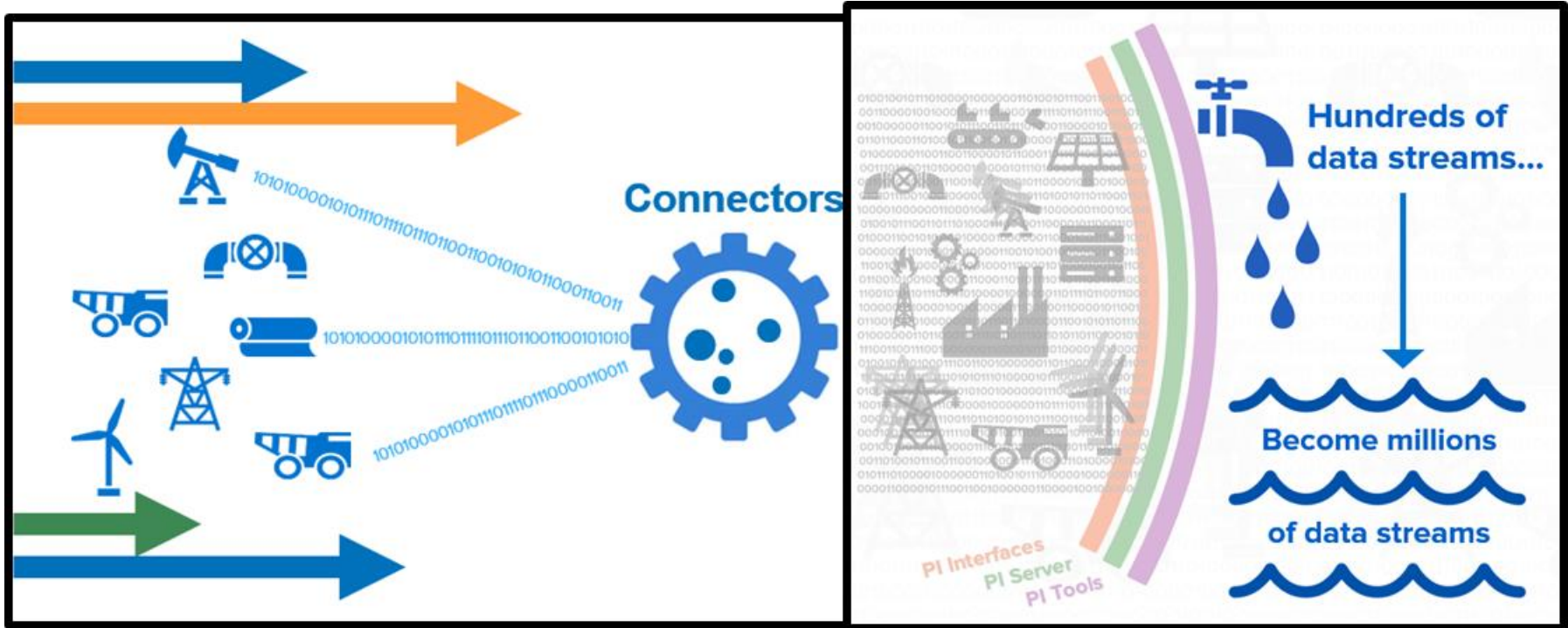
© Copyright 2015 OSIsoft, LLC

The age of connectivity

“Data is **still** the Bacon” The **Internet of Things (IoT)** refers to uniquely identifiable objects and their networked contextual time series connections represented in an Internet like structure.



Data management becomes an exponential problem



OSIsoft.

Empowering Business in Real-Time.

© Copyright 2015 OSIsoft, LLC

IoT = Time series data captures the “Physics of Things”

- Market Trend: Many organizations are shifting towards a SaaS story and are seeking to grow revenue and earnings through value added services.
 - ARC forecasting the IoT space to generate \$14 Trillion in value added services over the next 10 years
- IoT can be applied to almost every industry. What data do you want from your Assets?
 - Capturing the lifecycle of an asset has inherent value
 - The challenge is to identify key business problems and apply stated problems into business requirements and revenue bearing deliverables.
- OSIsoft offers methodology for organizing data infrastructure to companies offering discrete components and those offering services (e.g. RMD centers).
 - Provides an inherent capability to view the device signature
 - Making data durable



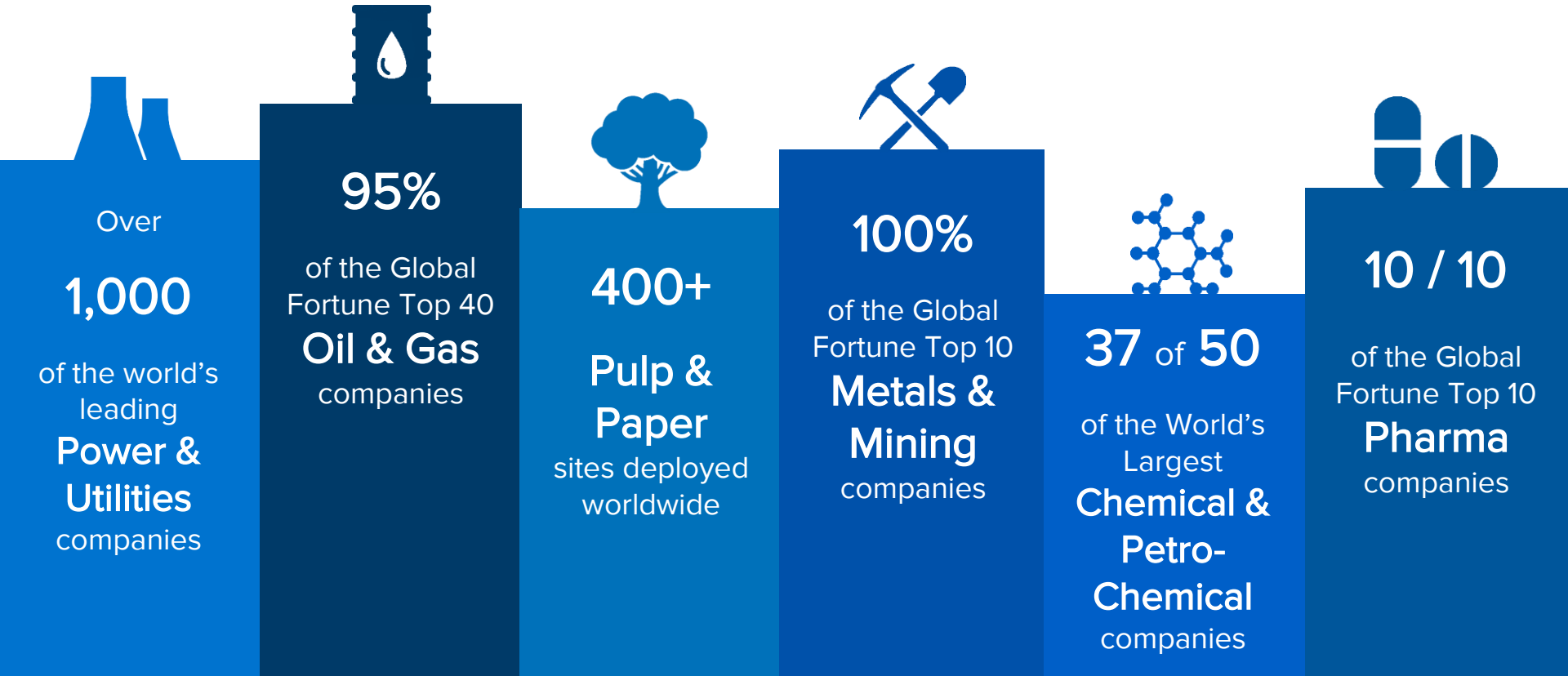
IoT Pattern Manifestation

IoT use cases are grouped into four primary modes:

- To **Monitor** assets and data (Situational Awareness)– Is the customer seeking to understand the status of the assets (previously unmonitored) to create and deepen operational Intelligence.
- To **Monetize** assets and data (Cost Savings) - Is usage of the asset being reported and charged for on an incremental basis?
- To **Operate** assets and data (Historizing & Analytics)- Is the primary motivation to use the asset to change or control some other object indirectly?
- To **Extend** value of assets and data (Analytics & SFA)- Is the benefit being generated by the provision of additional services or information, based on that data?



OSIsoft is trusted by the world's leading companies



OSIsoft.

Empowering Business in Real-Time.

© Copyright 2015 OSIsoft, LLC

MetroTech

MetroTech, Esri, and OSIsoft have combined their strengths to create the world's first cloud based Automated Traffic Management System

This leverages:

MetroTech's "traffic cameras to sensor data": video analytics and sensor capabilities to generate and analyze lane level sensor data at 95+% day and night through existing and already implemented video infrastructure

Esri "Mapping, visualization, distribution" : mapping platform, distribution channel through Esri app store, visualization, cloud based solution

OSIsoft "Sensor Data Management, Archival and Analytics: (sensor based aggregator/sensor analytics)

