

# OSIsoft PI System Visualization / Analytics

Presented by **Archie Gale**

# Industry Success Story

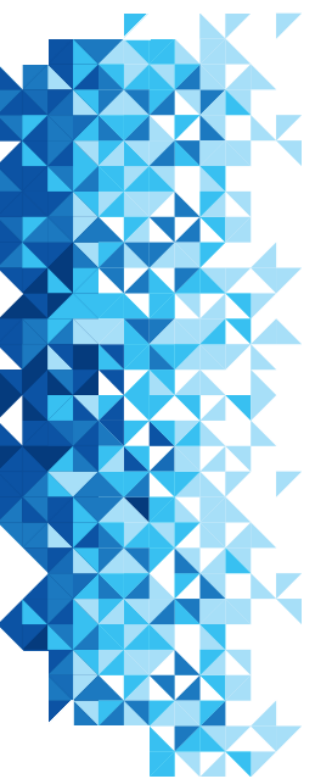
## Manila Electric Company (2015)

- CBM implemented by monitoring key gas ratios for the transformers
- US\$490,000/year saved
- ROI of 3 years



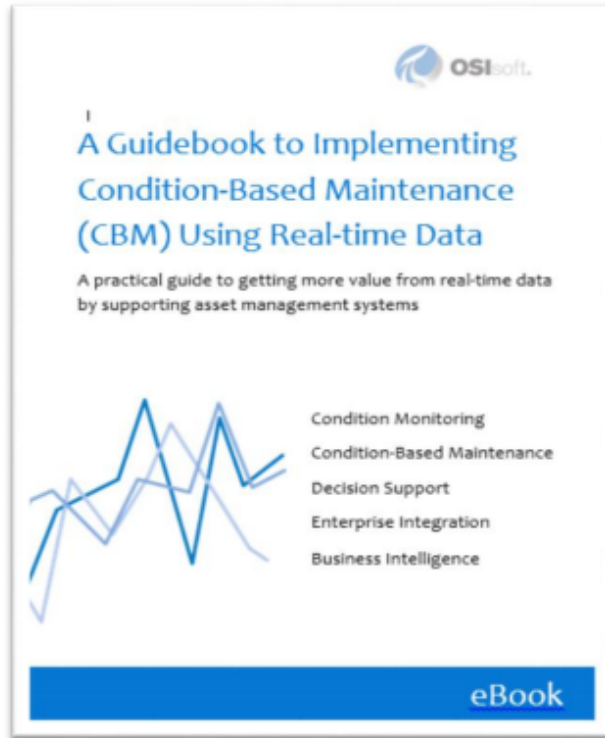
# Agenda

- Implementing CBM using the PI Analysis Service
- Using PI Clients for CBM
- Next Steps
- Conclusion



# Implementing CBM using PI Analysis Service

# CBM Prescriptive Guidance



Terms & Definitions

Implementation Guidance

PI System Overview for CBM

PI System Integration w/ CMMS

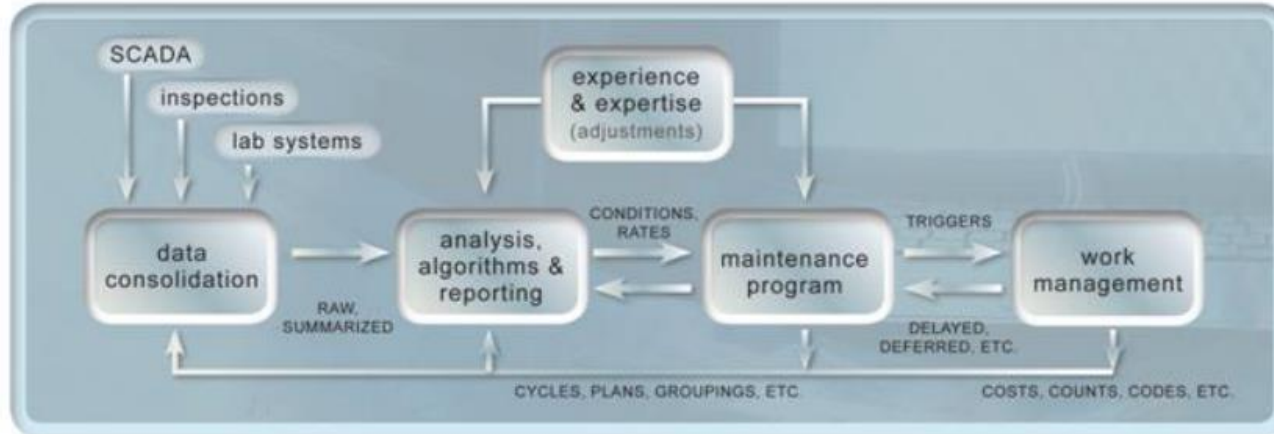
Enabling Opportunities

Solution Examples

Industry References

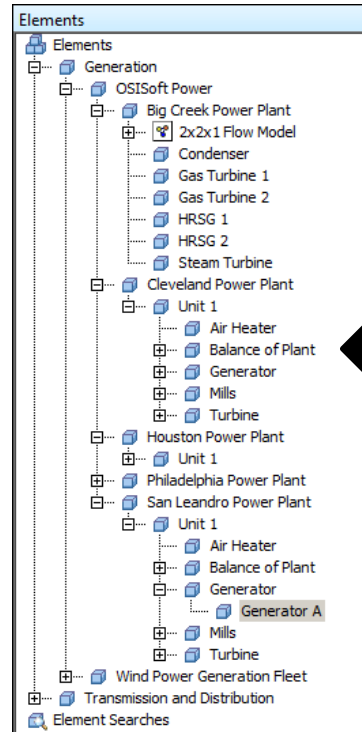
# Continual development process

- Continue to improve
- Continue to tie the process together
- Get more from existing data and systems



# Linking to EAM systems

- Assets synchronised between the EAM system and the AF database
- Utilise both PI and external analysis tools
- Bidirectional data flow
- Utilise PI Integrators



# PI Analysis Service features

- Perform useful, continuous analyses
- Multiline expressions
- Custom timestamp on output
- Write analysis outputs to attributes, and PI points for optional historisation
- Templatised

Example Element: [SOUTHEAST\Wolverine Station\ALX01](#)

Name	Expression	Value	Output Attribute	
Availability	((TimeEq('Status' , '*-1d', '**', 1)/86400 *100) / ',')		<a href="#">Availability</a>	⊗
Quality	TagAvg('Concentration', '*-1d', '**')		<a href="#">Quality</a>	⊗
Efficiency	((TagTot('Effluent Flow', '*-1d', '**') / TagTot(		<a href="#">Efficiency</a>	⊗
OEE	Availability/100*Efficiency/100*Efficiency/100*100)		<a href="#">OEE</a>	⊗

[Add a new expression](#)

Advanced...

Output time stamp override: *\*+1h*

	Gas Turbine Speed
	OEE
	Quality

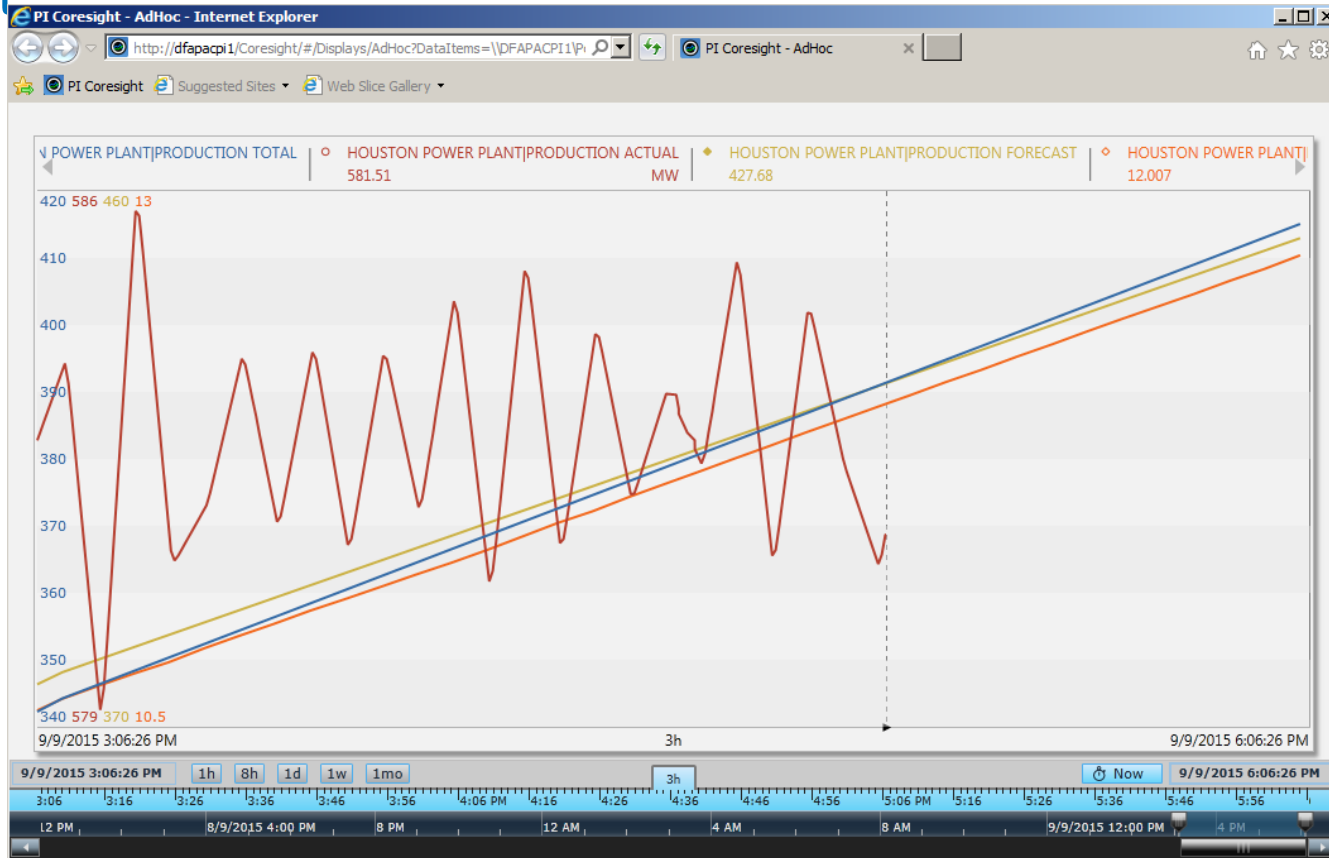
	Name
	OEE





# Using PI Clients for CBM

# Active monitoring with PI Notifications and External Links to Coresight

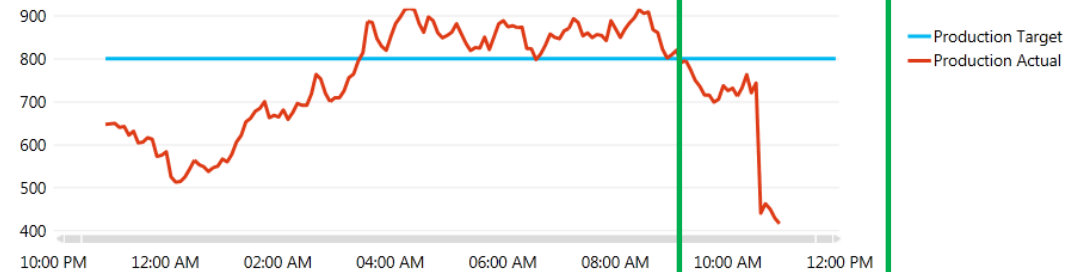


# Utilise existing Generator reports for analysis

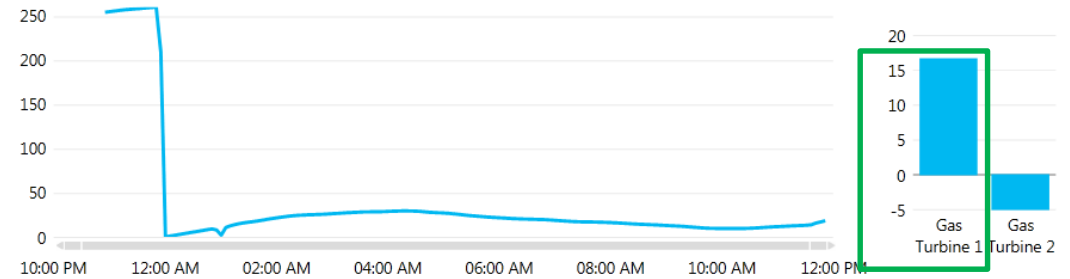


## Gas Generation

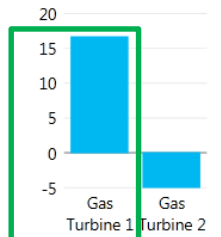
Production Target, and Production Actual by Time



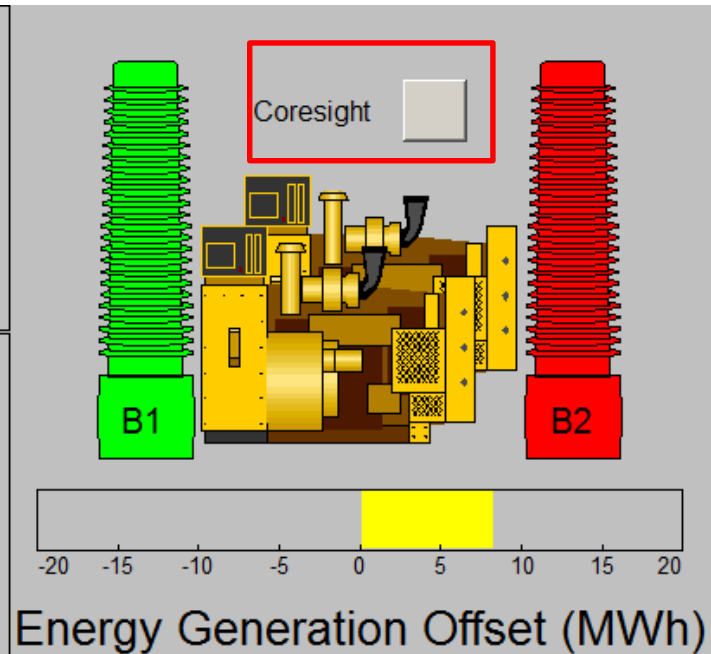
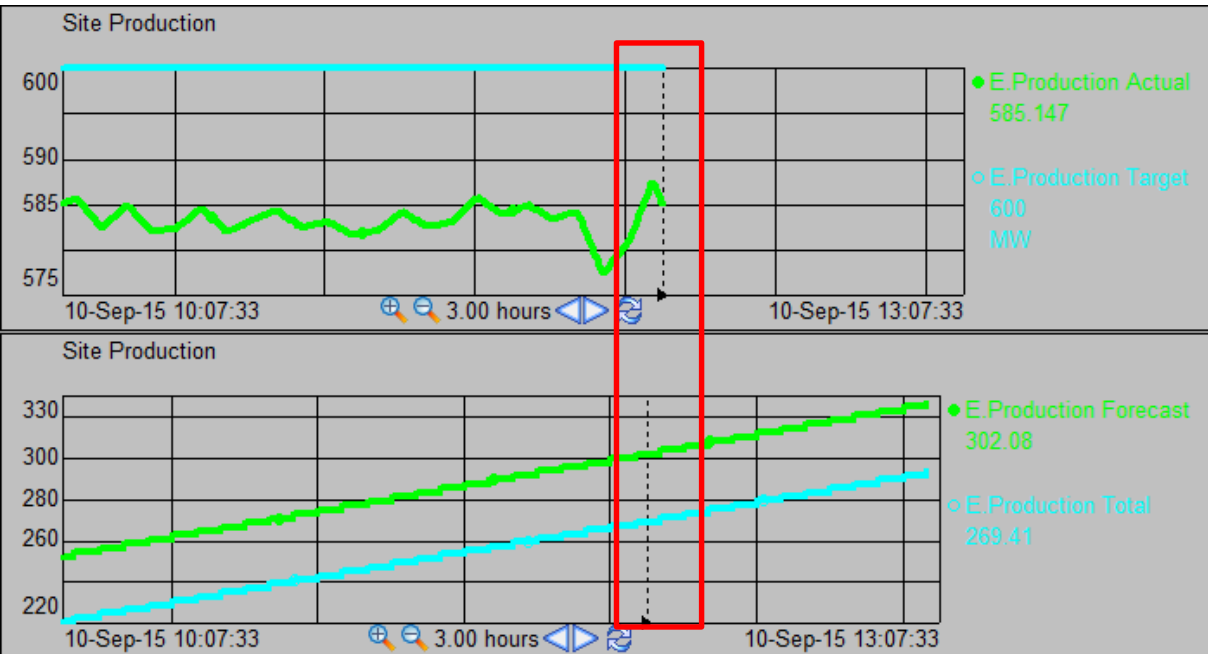
Production Offset by Time



Production Offset

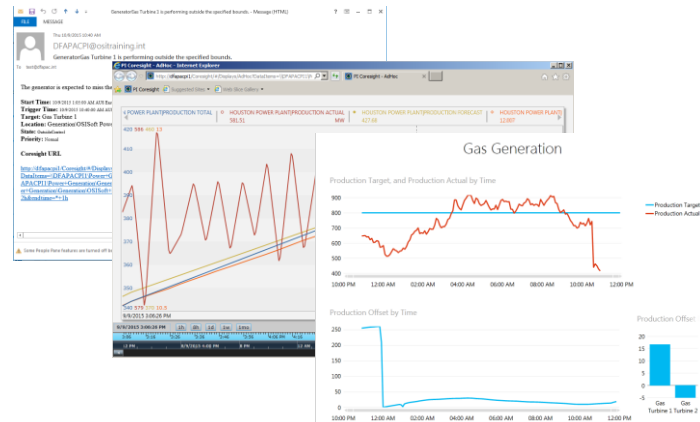


# In depth inspection of the turbine using PI ProcessBook



# Summary

The active monitoring in conjunction with premade reports increases efficiency twofold. Less time concerned about generators that are in a healthy state and less time spent creating the same reports for each subsequent alert



## BUSINESS CHALLENGES

- Utilise an active monitoring method to allow CBM
- Calculate asset health in real time for CBM
- Visualize relevant information faster and easier

## SOLUTION

- PI Notifications for active monitoring
- PI Analysis Service for calculating scores used in a templatised CBM model
- Ad-Hoc PI Coresight trends for quick and clear visualization
- Future data capabilities to increase score accuracy

## RESULTS AND BENEFITS

- Less resources passively monitoring
- Consistent scoring mechanism between assets
- Faster asset health visualisation
- Real time predictive modelling



# Next Steps

# How OSIsoft can help

- Prescriptive Guidance
- Workshops
- Customer Presentations
- PI Square
- Partners (products, services, partnerships)

# Contact Information

**Archie Gale**

[agale@osisoft.com](mailto:agale@osisoft.com)

Customer Support Engineer

OSIssoft



# Questions

Please wait for the  
**microphone** before asking  
your questions



State your  
**name & company**

# Please don't forget to...

Complete the Survey  
for this session



The **Power of Data**

DECISION READY IN REAL-TIME

## Evaluation Form (Seminar Location - Date)

Name: \_\_\_\_\_ Company: \_\_\_\_\_

Email: \_\_\_\_\_

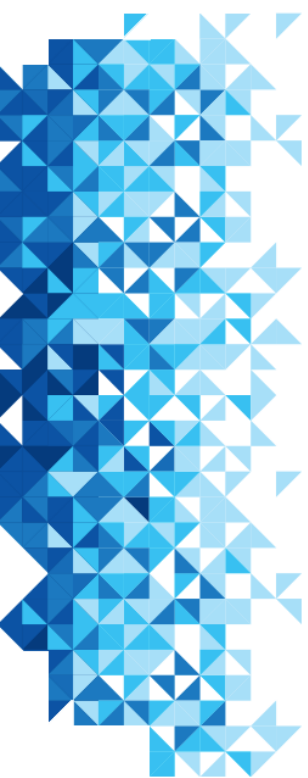
### Quality and content of the presentations

Poor Good Excellent N/A

Welcome	<input type="radio"/>	<input type="radio"/>	<input type="radio"/>	<input type="radio"/>
The Journey To Real-Time Operational Intelligence	<input type="radio"/>	<input type="radio"/>	<input type="radio"/>	<input type="radio"/>
The Power of Connection	<input type="radio"/>	<input type="radio"/>	<input type="radio"/>	<input type="radio"/>
Tank Level Management System	<input type="radio"/>	<input type="radio"/>	<input type="radio"/>	<input type="radio"/>
Using the PI System to Aid in Troubleshooting Operational Aspects of Oil and Gas Well Drilling and Completion	<input type="radio"/>	<input type="radio"/>	<input type="radio"/>	<input type="radio"/>
Unleash your Infrastructure	<input type="radio"/>	<input type="radio"/>	<input type="radio"/>	<input type="radio"/>
Information on the Spot	<input type="radio"/>	<input type="radio"/>	<input type="radio"/>	<input type="radio"/>
Wrap-up/Seminar Conclusion	<input type="radio"/>	<input type="radio"/>	<input type="radio"/>	<input type="radio"/>

### Quality and organization of the seminar

Choice of date	<input type="radio"/>	<input type="radio"/>	<input type="radio"/>	<input type="radio"/>
Time allowed for lunch/breaks	<input type="radio"/>	<input type="radio"/>	<input type="radio"/>	<input type="radio"/>
Choice of presentations	<input type="radio"/>	<input type="radio"/>	<input type="radio"/>	<input type="radio"/>
Days and time allowed for the presentation	<input type="radio"/>	<input type="radio"/>	<input type="radio"/>	<input type="radio"/>



감사합니다

谢谢

Danke

Merci

Gracias

Thank You

ありがとう

Спасибо

Obrigado