

# Welcome Oceania – Regional Seminar 2015

**Presenter : Steve Hofman, Regional Manager - Oceania**

**Date: September 2015**

**Location: The Westin, Sydney**



# First a big thank you to:

You, our customers. We have 6 customer presentations

Our Partners: We have 5 Partner presentations  
Corporate:

Esri, SAP & Rockwell

Local:

Optimate (Diamond Sponsor & Dinner presenter),  
Mipac & GTS (Gold Sponsors & Lunch Presenters)  
Dimension Software & Roteq (Bronze Sponsors)



The OSIsoft team (19) that are here today.

We have 4 OSIsoft Technical presentations and 2 Product Education streams (Friday)

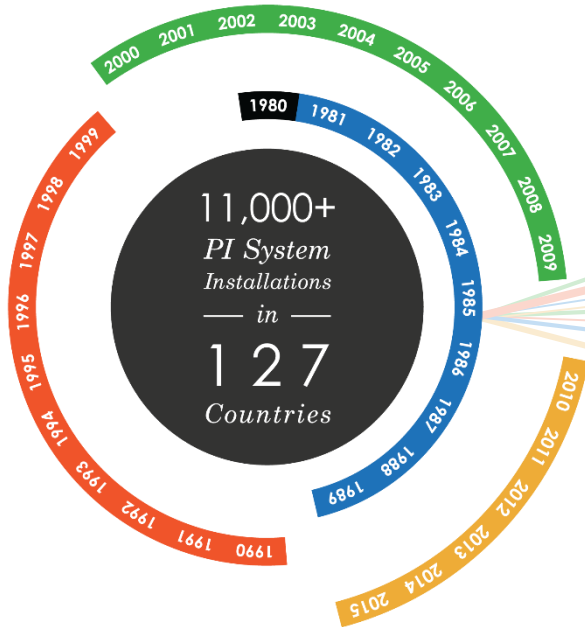
And a special thank you to my account management team (6) that have worked so hard to get you all here today (over 100 attendees & 15 presentations)



OSIsoft believes **People** with **Data** can **Transform** their world



# A Unique and Proven Vision



## For over 30 years OSIsolt has:

- Infrastructure for consolidation and centralization of sensor based data
- Open infrastructure to support best of breed ecosystems
- Scalability from small deployments to enterprise deployments
- Infrastructure for change
- Infrastructure for empowering people



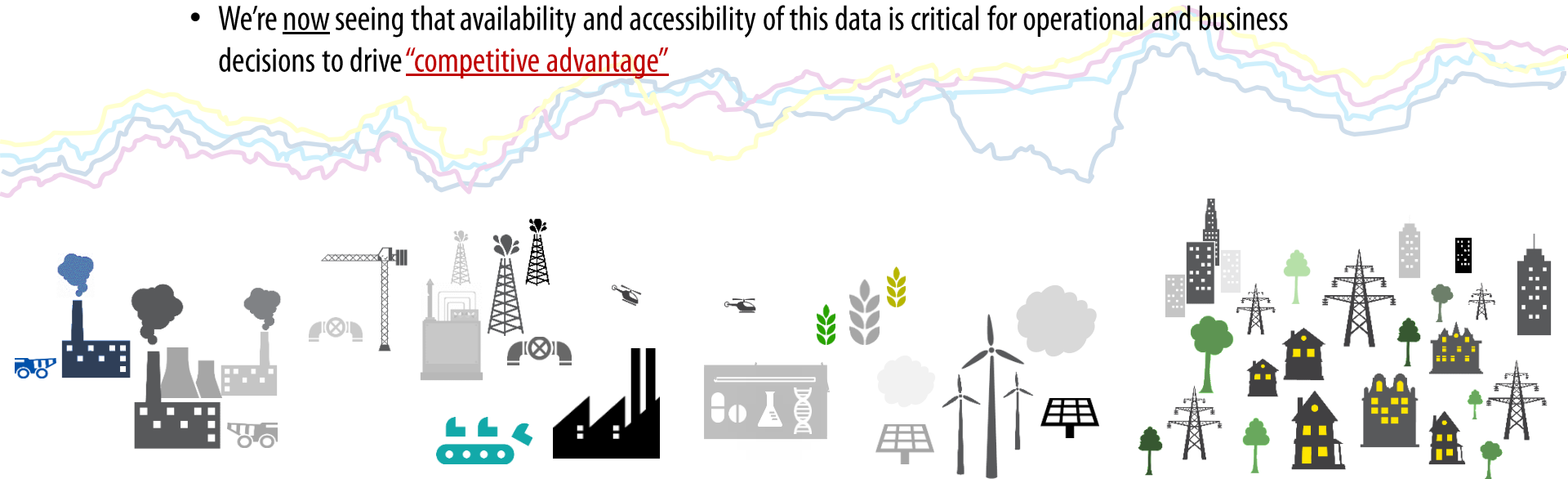
OSIsolt.

Empowering Business in Real-Time.

© Copyright 2015 OSIsolt, LLC

# The need for a Data Infrastructure

- Real-time Operations Data is being created everywhere
  - We're still seeing that devices and systems are creating islands of data
  - We're are now seeing the demand to connect data with context, to systems, to people, to actions
  - We're now seeing that availability and accessibility of this data is critical for operational and business decisions to drive "competitive advantage"

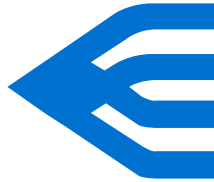


# What is an Infrastructure?

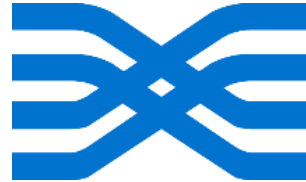
**in·fra·struc·ture** [in-fruh-struhk-cher]

“It can be generally defined as the set of **interconnected structural** elements that provide **framework supporting** an entire structure of development<sup>1</sup>”

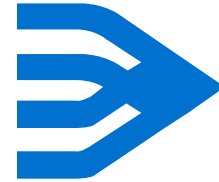
## Traits of an Infrastructure



Reliability  
Security  
Extensibility  
Agility



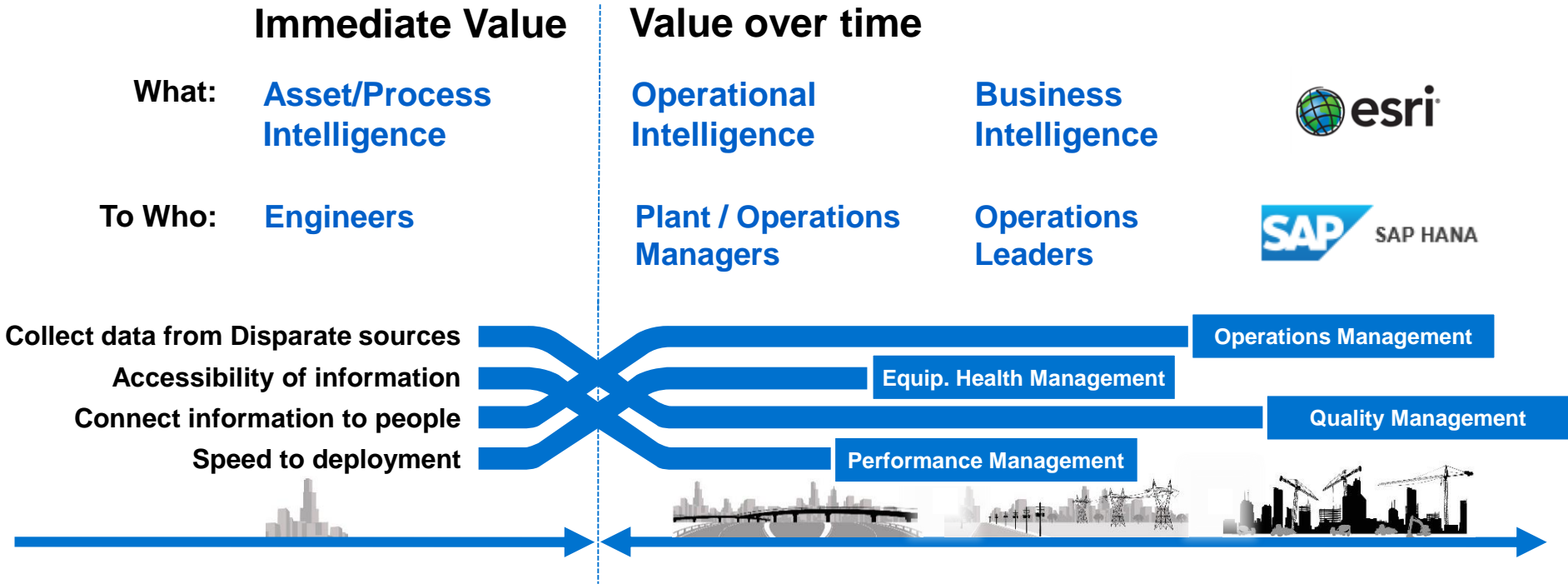
Scalability  
Availability  
Connectivity  
Simplicity



Enabling the convergence of Operational data across the Enterprise



# Infrastructure: Enables Value Over Time



OSIsoft

Empowering Business in Real-Time.

© Copyright 2015 OSIsoft, LLC

# Infrastructure: Creates Operational Intelligence for the Business

Safety &  
Security

Energy  
Utilization

Process  
Efficiency

Asset Health

Quality

Regulatory  
Performance



**Operators  
Craftsmen  
Supervisors**

- ✓ Achieve daily targets
- ✓ Resolve immediate issues
- ✓ Maintain schedule/plan
- ✓ Safe operations



**Process Engineers  
Production Superintendents  
CoE experts**

- ✓ Detect excursions
- ✓ Maintain process stability
- ✓ Improve productivity
- ✓ Improve quality



**Location Managers  
Regional/Global Ops  
Business leadership**

- ✓ Understand/grade perf.
- ✓ Adjust expectations
- ✓ Establish plans
- ✓ Calculate forecasts



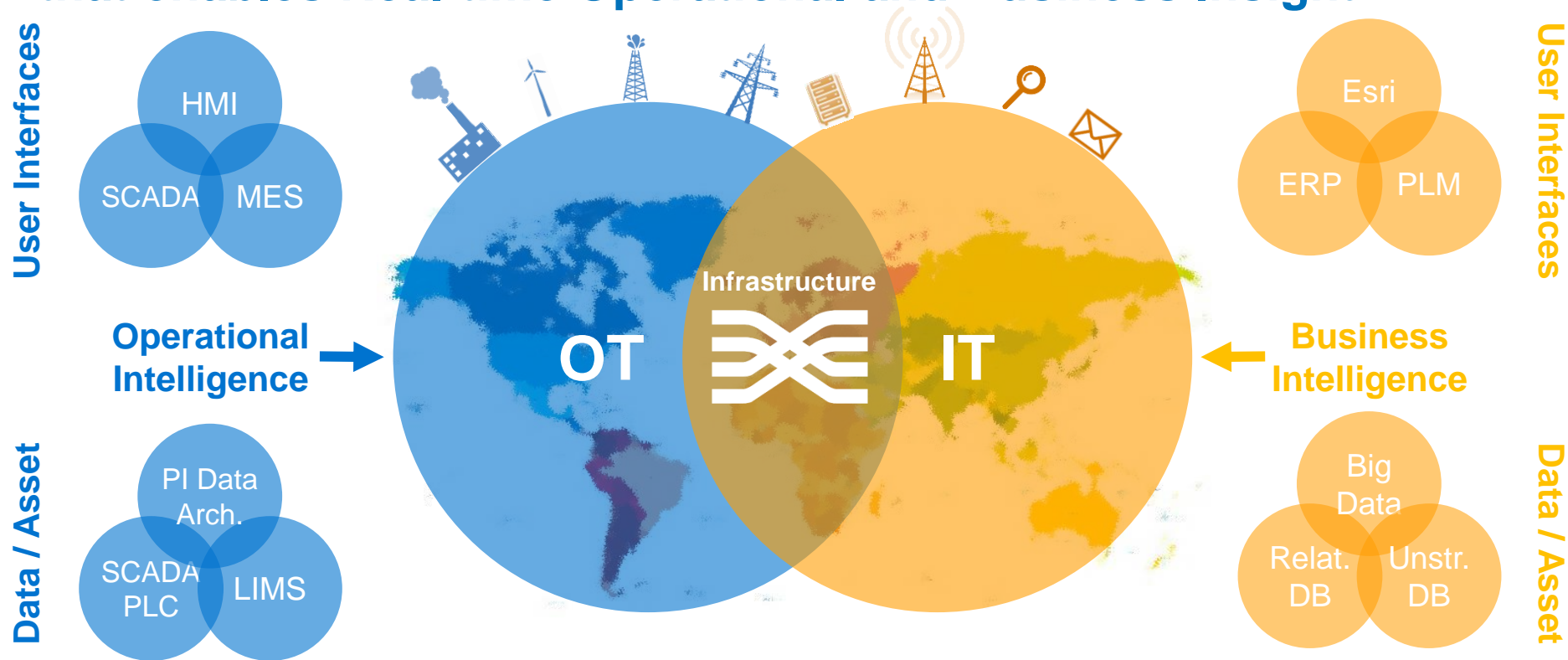
OSIsoft.

Empowering Business in Real-Time.

© Copyright 2015 OSIsoft, LLC



# PI Infrastructure: Is the convergence layer between OT & IT that enables Real-time Operational and Business Insight



OSIsoft.

Empowering Business in Real-Time.

© Copyright 2015 OSIsoft, LLC

# Driving “Competitive Advantage” for our Customers

Safety &  
Security

Energy  
Utilization

Process  
Efficiency

Asset Health

Quality

Regulatory  
Performance



Reduced **5**  
**unplanned**  
shutdowns in  
2013

Reduced  
facilities energy  
costs by over  
**\$2M**

Over **\$2.8M** in  
savings from  
event  
prevention

Avoided up to  
**\$2M** savings if  
unit failed

Recovered  
**640M** liters of  
treated water

**\$300k** in  
savings Water  
temperature  
permit  
compliance



OSIsoft®

Empowering Business in **Real-Time.**

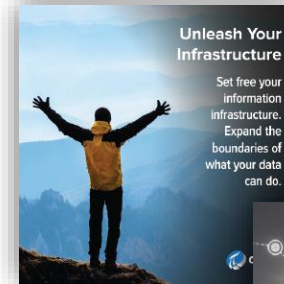
© Copyright 2015 OSIsoft, LLC

# A PI Infrastructure:

- Is an enabler for Operational Intelligence
- Delivers Operational and Business outcomes easily, efficiently and effectively
- Drives “Competitive Advantage” for you and your business

“Intelligence without data is the slowest path to success.

Data without intelligence is the noise before failure”



OSIsoft.

Empowering Business in Real-Time.

© Copyright 2015 OSIsoft, LLC

# What are some of the key take aways from this event?

I see at least two things:

How can we help you do things better tomorrow,  
than what you did today.

What can we do with your PI System to drive  
“Competitive Advantage”.

