

How TEP Recovered from the Loss of their Primary PI Server

Presented by **Carlos Arocho**



OSIsoft.

USERS GROUP

© Copyright 2015 OSIsoft, LLC.

PI Server will not complete a reboot

- July 4, 2015
- A call from our IT systems group
- I couldn't believe what I was hearing

Windows Patching

- IT was applying patches when . . .
- They rebooted the Primary PI server
- The server got stuck in an infinite reboot cycle
- It never came back

Call for help!

- Remote into my system to confirm
- Collective manager confirmed the worst
- Call OSIssoft tech support
- They provide some guidance but tell me that it's an OS issue



Don't worry we have backups

- IT attempted to restore a backup
- They attempted restoring backup after backup
- Nothing worked
- Our primary PI server was gone

Secondary is scheduled for patching

- IT informed me that the Secondary PI server was due to have patches applied the next day
 - Do not to touch the secondary
- We have current data is on the secondary PI server
 - We should be good until the next Monday
- I confirm this with OSIsoft tech support

Call it a day

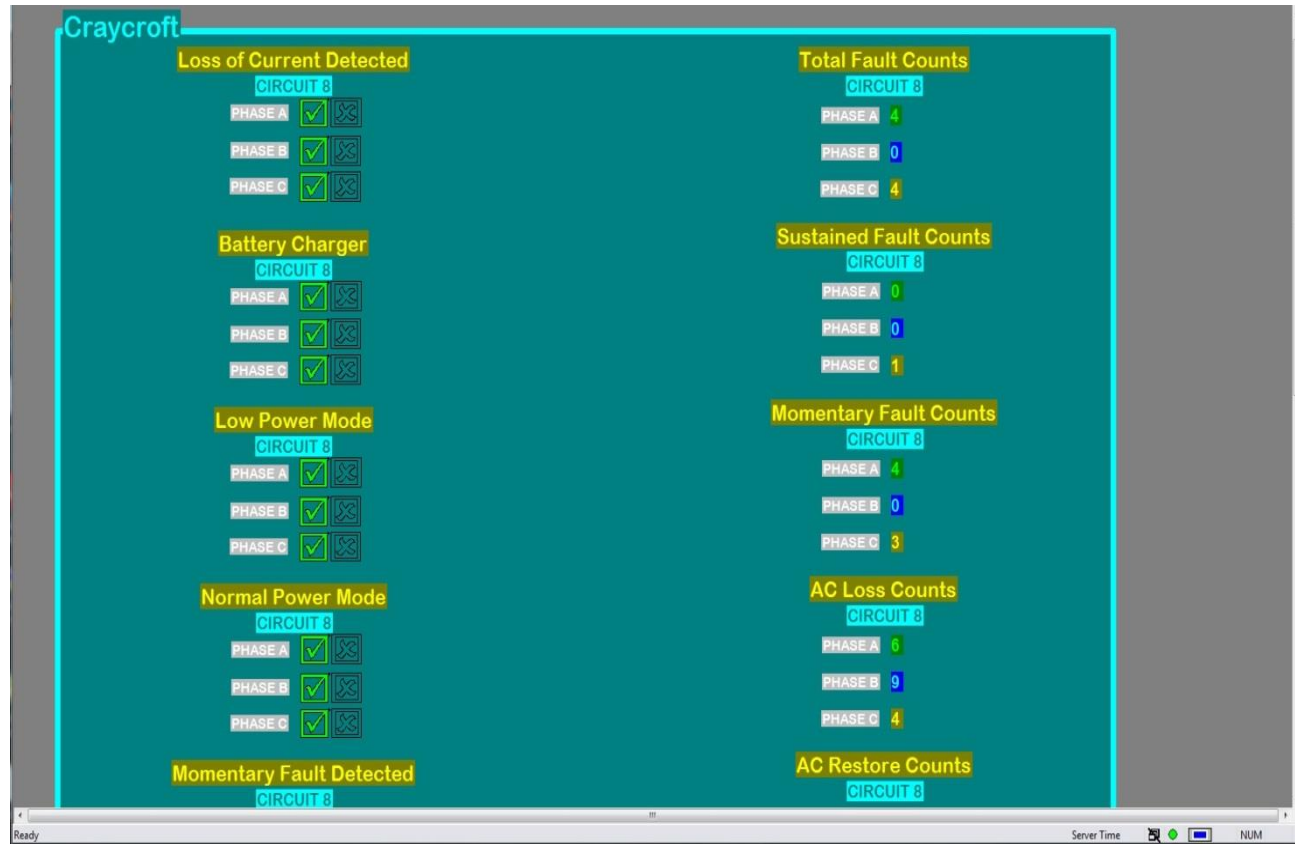
- I communicate this to our IT
- We call it a day and agree to resume on Monday
- My family and I resume our trip out of town for the holiday

Restoration

- Promote the surviving PI server to be the new Primary
- IT rebuilds me a server
- Install and configure the PI server software
- Add it to my collective, initialize

Grid Advisor

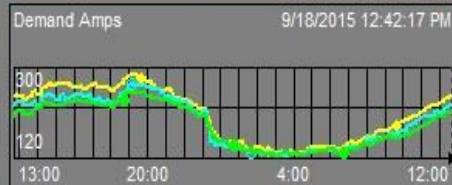
- Line mounted devices on each phase
- Provides visibility to lower voltage system
- Enables outages to be identified sooner
- Strengthens our system reliability



Main Menu

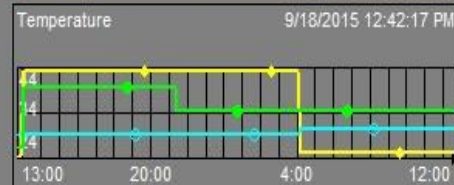
Craycroft 8A

Battery Charger Status	ON
Loss Current Detect	Normal
Momentary Fault Detect	Normal
Sustained Fault Detect	Normal
Entering Normal Mode	YES
Entering Low Power Mode	NO



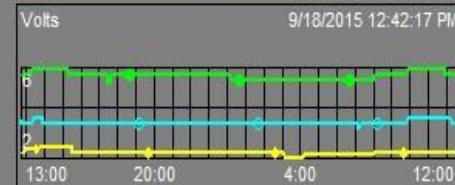
Craycroft 8B

Battery Charger Status	ON
Loss Current Detect	Normal
Momentary Fault Detect	Normal
Sustained Fault Detect	Normal
Entering Normal Mode	YES
Entering Low Power Mode	NO



Craycroft 8C

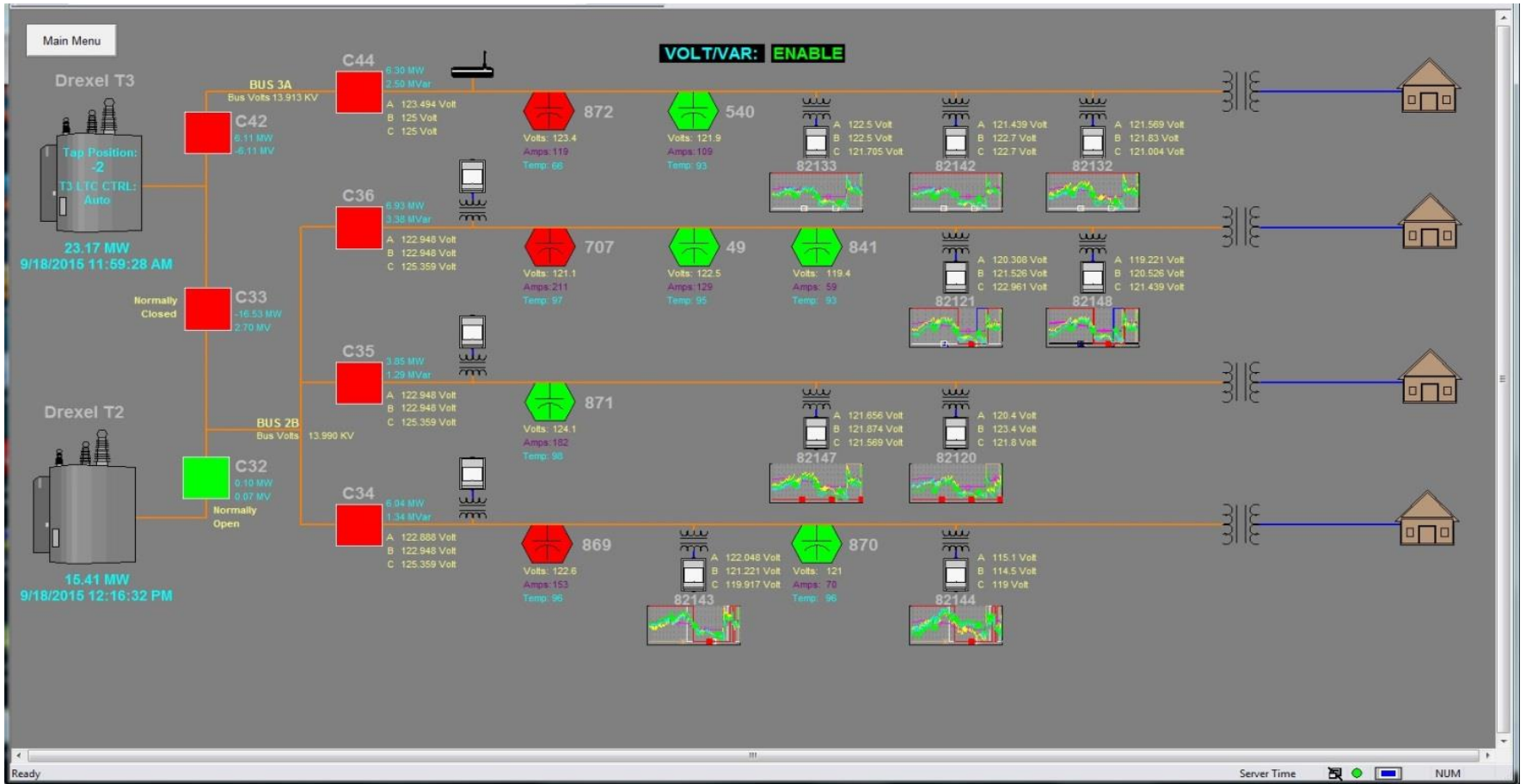
Battery Charger Status	ON
Loss Current Detect	Normal
Momentary Fault Detect	Normal
Sustained Fault Detect	Normal
Entering Normal Mode	YES
Entering Low Power Mode	NO



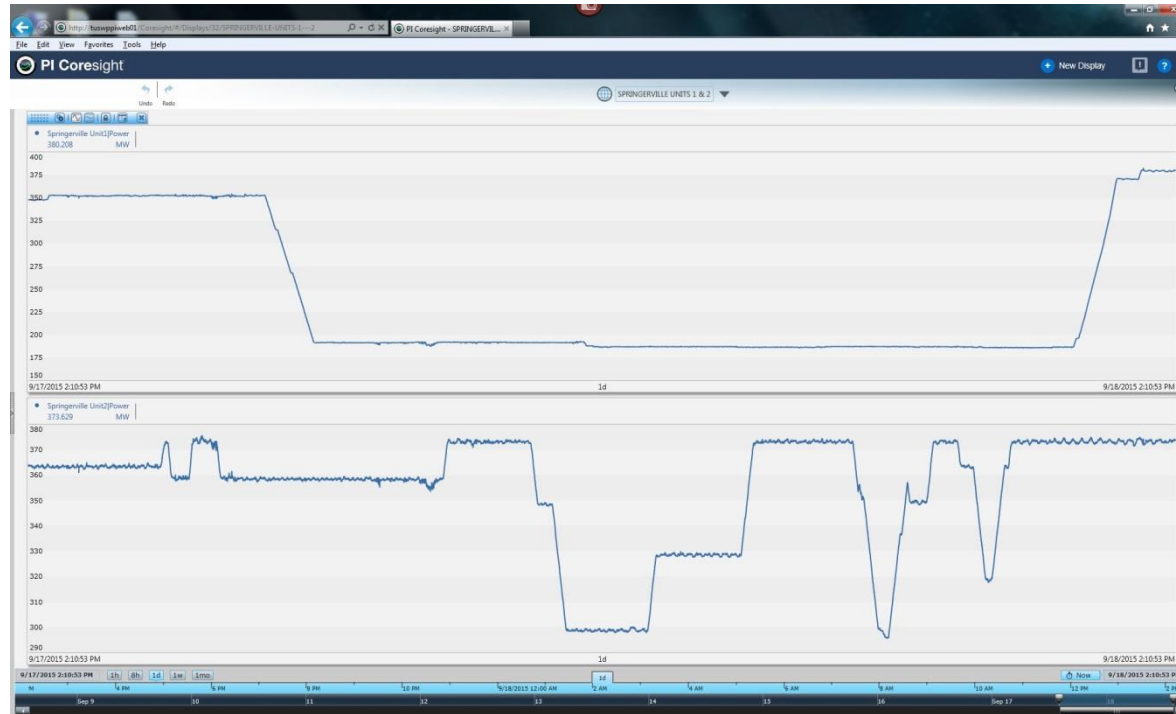
Volt Var Intelicap

- Volt Var optimization
- Efficiently control VAR flow
- Save fuel costs
- PI Trend Displays
- Weekly automated reporting to their vendor who monitors the effectiveness of the system



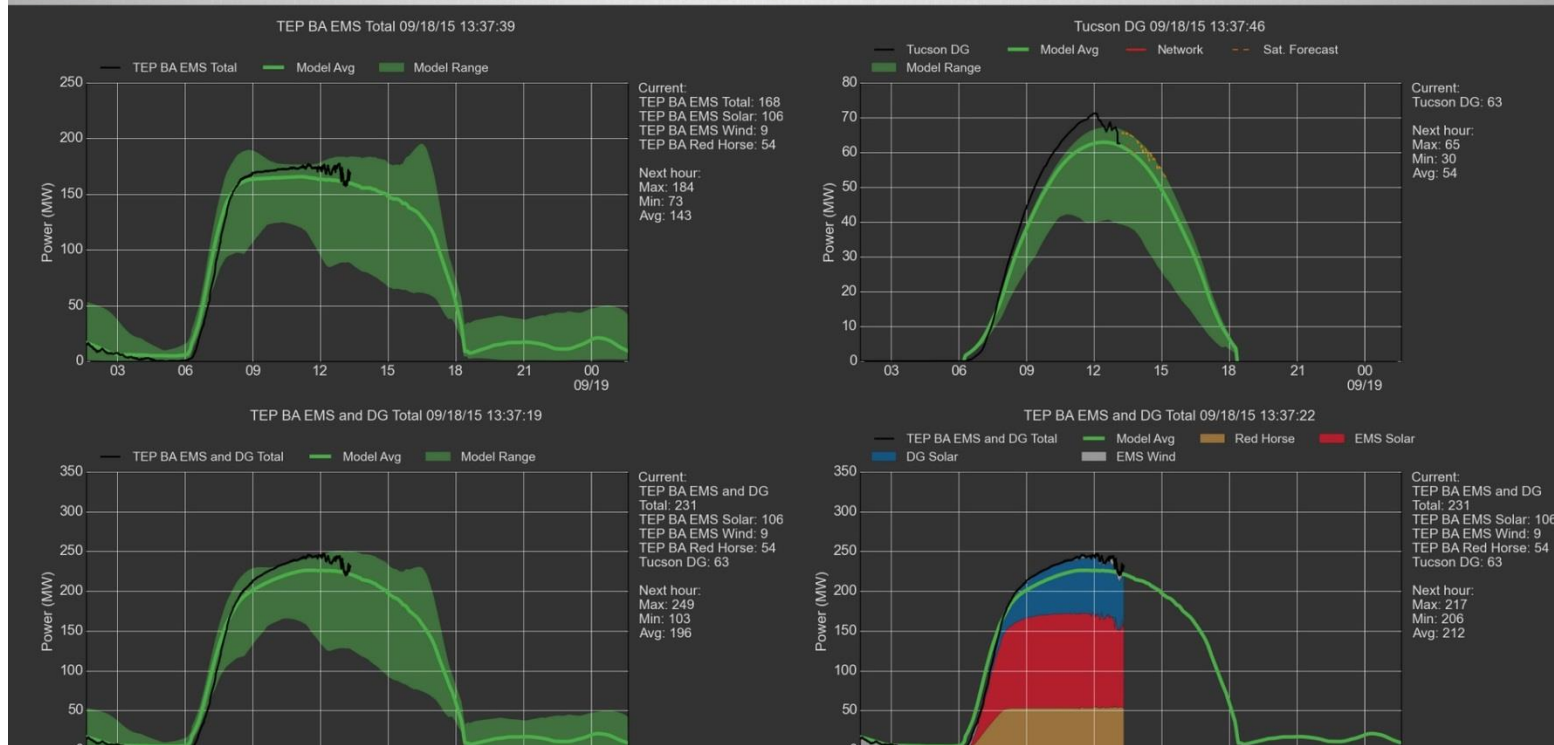


PI Coresight



UA REN Partnership

- Renewable forecast
 - Wind
 - Solar irradiance sensors
- Monsoon forecast



Local PI Users Group

- Why...
- Young group of PI users across the corporation
- Most new to PI client tools and applications
- Use to provide training and create our own PI subject matter experts
- Share, encourage and inspire



Carlos Arocho

- carocho@tep.com
- EMS Engineer
- Tucson Electric Power Co.



THANK YOU

Brought to you by  **OSIsoft.**



OSIsoft.

USERS GROUP