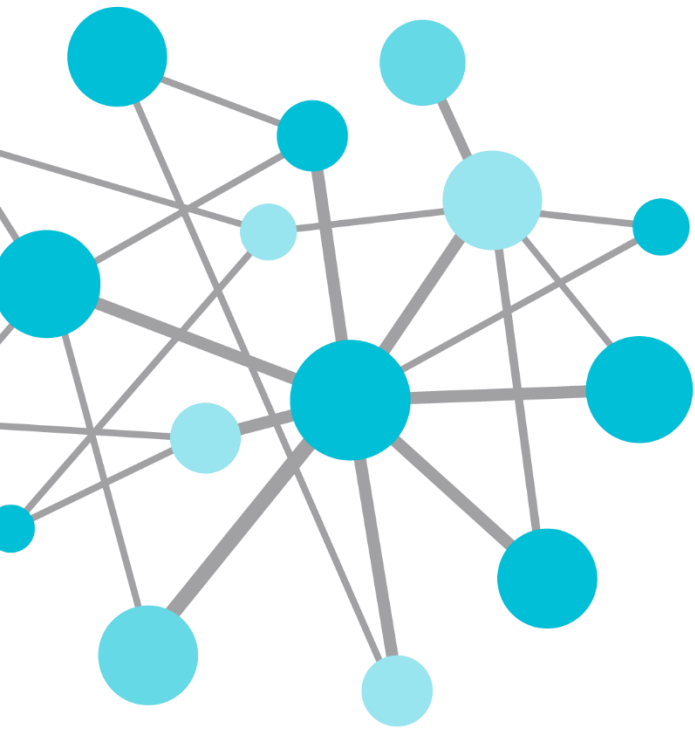




Manual Data Entry with PI Manual Logger

Presented by **Laurie Dieffenbach**
Rhonda Clendenon



**This is an
interactive session**
**Have your devices
handy!**

Participating with Poll Everywhere

How to vote via the web or text messaging



For Text messaging, first send the text: **piml**; after you have sent that once, you can just text the number of the response you want to send

Your poll will show here

1

Install the app from
pollev.com/app

2

Make sure you are in
Slide Show mode

Still not working? Get help at pollev.com/app/help
or
[Open poll in your web browser](#)

Your poll will show here

1

Install the app from
pollev.com/app

2

Make sure you are in
Slide Show mode

Still not working? Get help at pollev.com/app/help

or

[Open poll in your web browser](#)

All Companies Collect Some Sort of Manual Data



- Data collection is usually done **in the plant**
- Many use **inefficient** paper records
- **Mobile devices** are increasing in popularity and new ones have emerged

What is PI Manual Logger?

- A set of tools to configure and execute **routine** manual data entry (tours)
- Features focused on validating entries, navigating collection for multiple values, and optional data review
- Two sets of tools:
 - One focused on data collection (tour runs) with mobile devices - **PI Manual Logger Mobile**
 - One focused on administration and configuration - **PI Manual Logger**



Disclaimer: OSIsoft does not endorse any device manufacturer or vendor; images shown are for illustration purpose only

Example Data Collection Tours



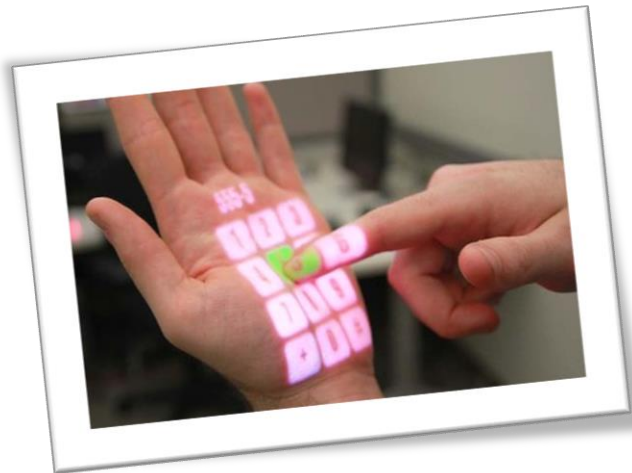
Rank	Team	Record	Points For	Points Against
1	San Francisco 49ers	10-6	279	178
2	Seattle Seahawks	10-6	279	178
3	Arizona Cardinals	10-6	279	178
4	San Diego Chargers	10-6	279	178
5	Atlanta Falcons	10-6	279	178
6	Philadelphia Eagles	10-6	279	178
7	Minnesota Vikings	10-6	279	178
8	Green Bay Packers	10-6	279	178
9	Carolina Panthers	10-6	279	178
10	Washington Redskins	10-6	279	178
11	Denver Broncos	10-6	279	178
12	Indianapolis Colts	10-6	279	178
13	New York Jets	10-6	279	178
14	Buffalo Bills	10-6	279	178
15	Oakland Raiders	10-6	279	178
16	Los Angeles Rams	10-6	279	178
17	New England Patriots	10-6	279	178
18	Cincinnati Bengals	10-6	279	178
19	Pittsburgh Steelers	10-6	279	178
20	Denver Broncos	10-6	279	178

PI Manual Logger Mobile

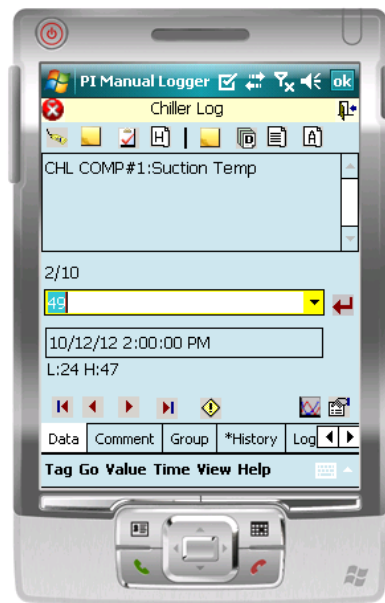
- When data isn't collected at a desk
- The device used to collect data has to be easy to carry around
- The device has to be safe and stand up to harsh environments
- Data entry has to be efficient and accurate, but simple to do
- Network connections may not be available or unreliable

PI Manual Logger Mobile

- PI Manual Logger Mobile 2012
 - Windows Mobile 2003 SE to 6.x devices
 - Local install on the device
 - Ruggedized device options, becoming obsolete
 - Works with PI Manual Logger 2014 tours
- PI Manual Logger Web 2014 or 2014 R2
 - Installed on a web server
 - Supports ANY device with an HTML5-compatible browser
 - Goal to support iOS and Android devices
 - Newest release is localized into 8 languages (R2)
- See [Product Overview](#) page on Tech Support web site for specific differences
- OSIsoft does not endorse any particular hardware



PI Manual Logger Mobile 2012



PI Manual Logger Web 2014

PI Manual Logger

TOURS

Online

Save | Pump Vibrations and Temperatures

CancelSave

Tour Run: Apr 1, 2014, 02:48:36 pm

☐ Navigate to remaining items only

1 of 8 (7 remaining)

Pump P250 Vibrations

South Reflux Pump 1 Pump1

Vibration reading for south reflux pump

Instructions

Collect the vibration reading from the South Reflux Pump P250

Value (InoSec)

1

Limits violated: H(0.5)

H:0.5

Previous: .56 - Mar 6, 2014, 03:18:46 pm

Timestamp

Apr 1, 2014, 02:48:41 pm

Comment

See historical values

0.59 - Feb 18, 2014, 05:09:41 pm

7 - Feb 12, 2014, 01:54:18 pm - The steam value blew

Unit Down - Feb 11, 2014, 01:28:21 pm

0.54 - Feb 11, 2014, 11:06:04 am

0.54 - Feb 11, 2014, 11:03:53 am

0.4 - Feb 7, 2014, 08:09:27 am

Unit Down - Feb 6, 2014, 05:03:56 pm

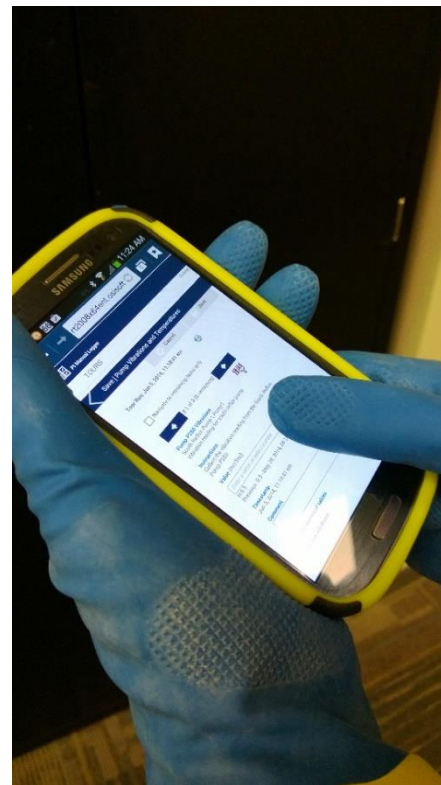
0.54 - Feb 6, 2014, 02:24:18 pm

0.54 - Feb 4, 2014, 02:16:56 pm

0.46 - Feb 4, 2014, 01:54:38 pm

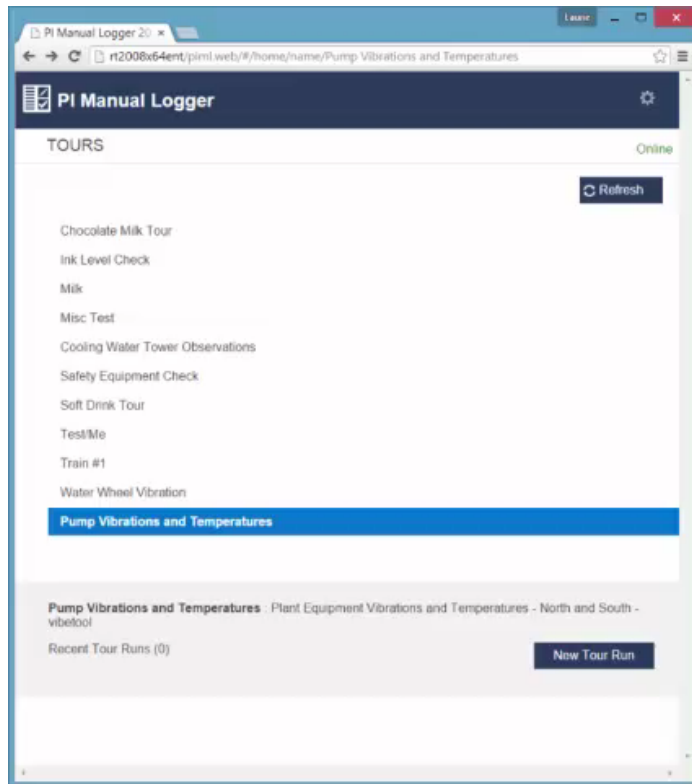
See attributes

Pump P250 Temp

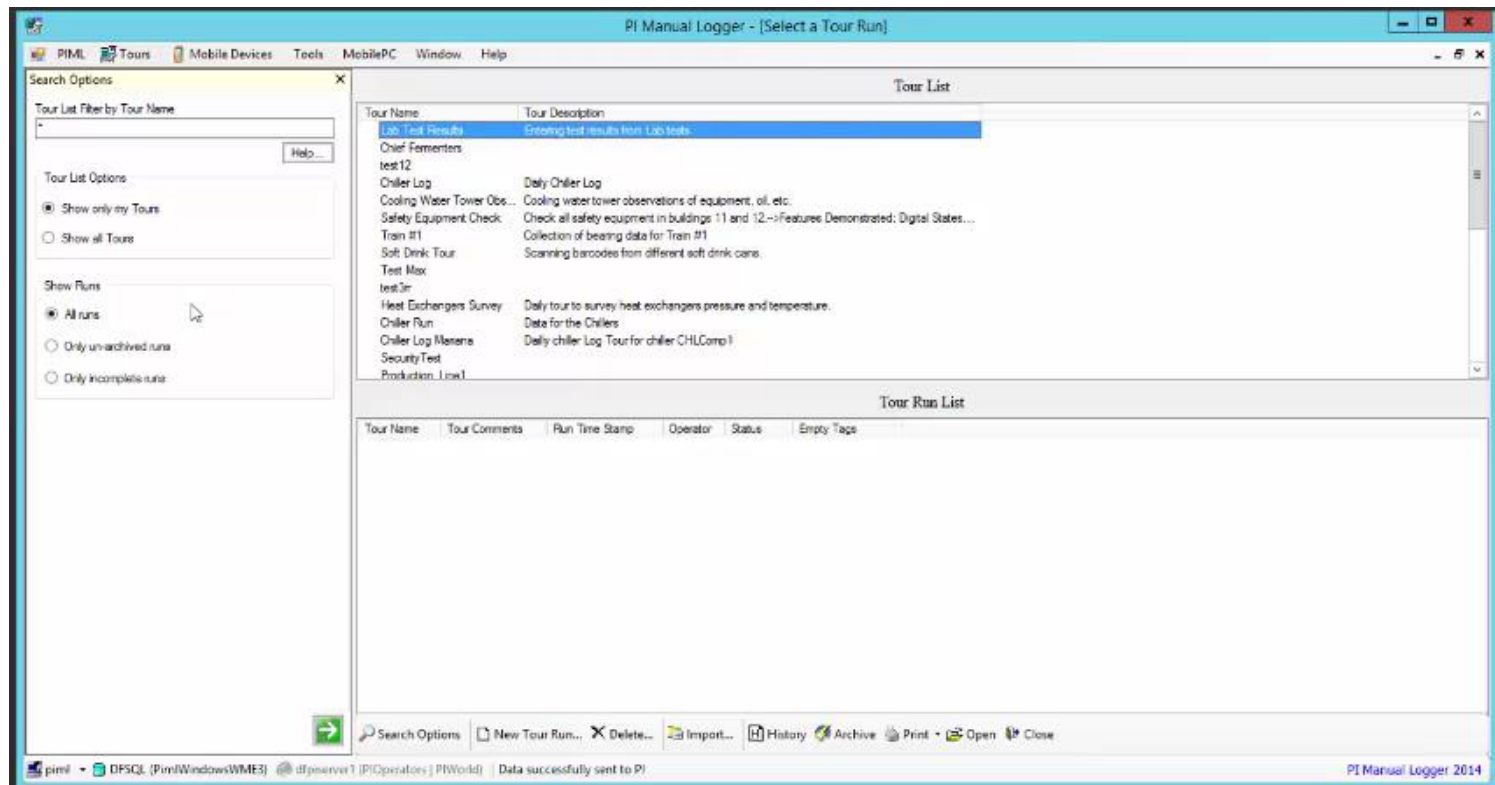




Backup Video



Backup Video 2



Your poll will show here

1

Install the app from
pollev.com/app

2

Make sure you are in
Slide Show mode

Still not working? Get help at pollev.com/app/help

or

[Open poll in your web browser](#)

Your poll will show here

1

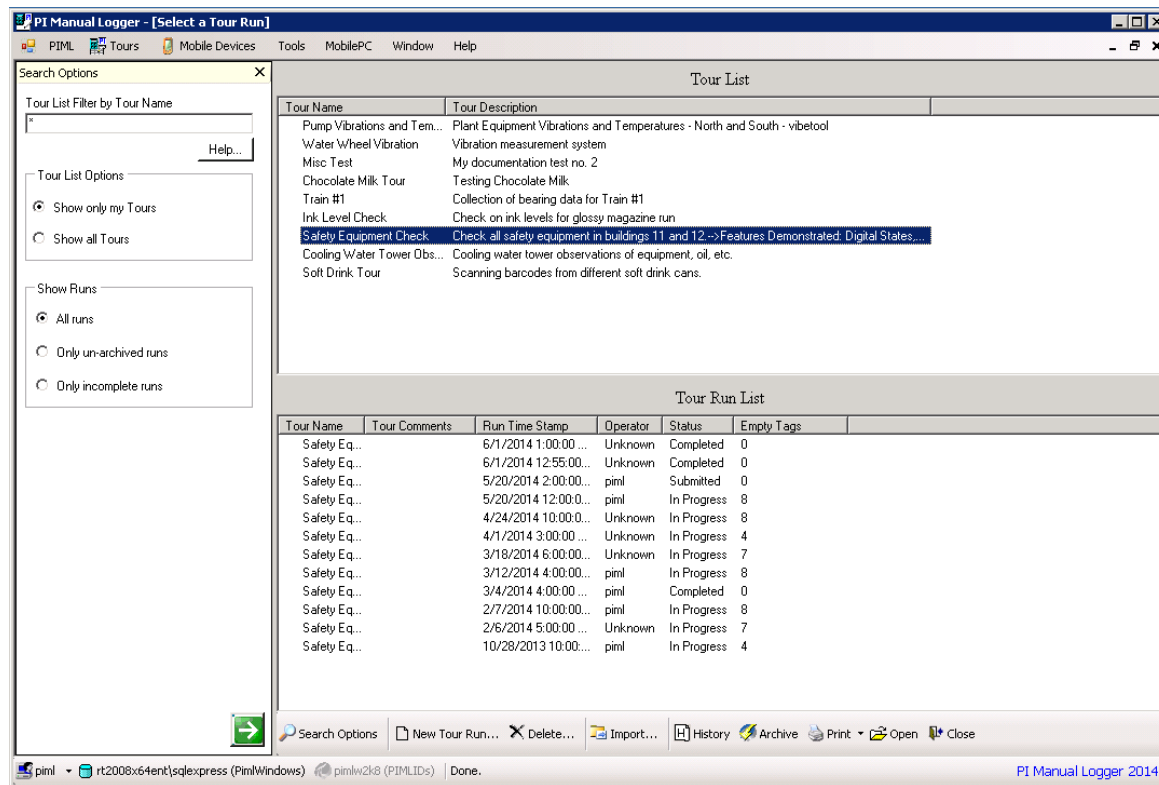
Install the app from
pollev.com/app

2

Make sure you are in
Slide Show mode

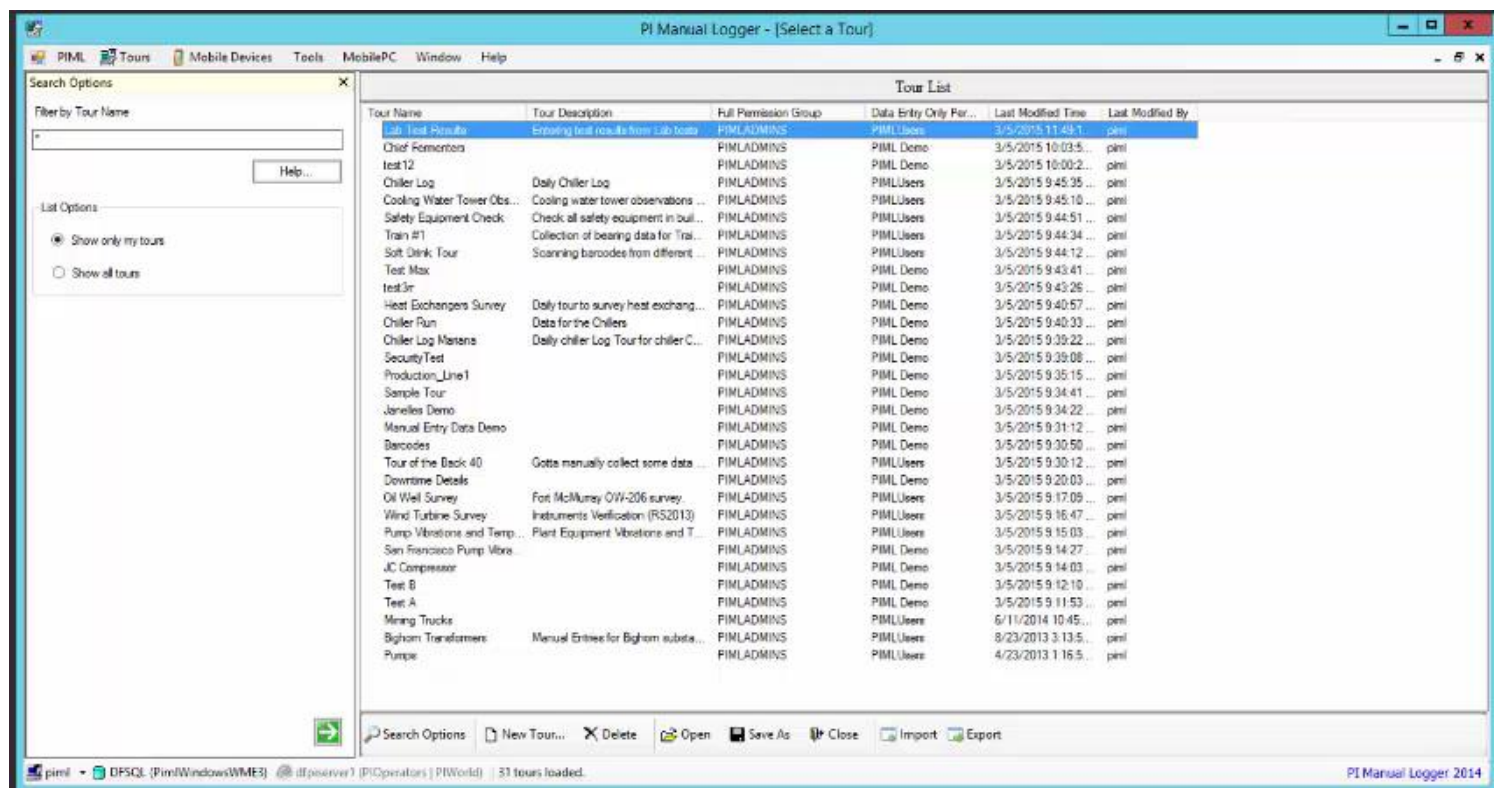
Still not working? Get help at pollev.com/app/help
or
[Open poll in your web browser](#)

Configuration on the Desktop





Backup Video 3



Using the Desktop app

- Configure general settings
 - Which SQL Server is used to store setting and data before it gets sent to PI
 - Which PI Data Archive will receive data
- Configure routine data collection including:
 - Order in which values should be collected
 - Limits associated with the entered value
 - Barcodes associated with tags, for easier navigation
 - Security (who can edit the tour, who can collect)
 - Whether data needs review before sending to PI
- Enter data, including using a grid for quick sequential entry
- Review data, including reviewing limit violations and making any corrections
- Send data to PI

More Information

- Go see the product in action at the Product Expo
 - Product Expo is open until noon today!
- Review customer presentations
 - Verso Paper from Wednesday
 - Suncoke Energy from Wednesday
 - Recorded presentations available on the OSIsoft web site

Advantages of PI Manual Logger

- Easiest way to get data into PI that isn't collected via instrumentation
- Off-the-shelf application only requires configuration
- Part of a complete PI System infrastructure
- Data collection is easy to configure and execute
- Data collection can take place with a variety of devices

Questions

Please wait for the **microphone**
before asking your questions

State your
name & company





THANK YOU

Start capturing your manual data into the PI System!