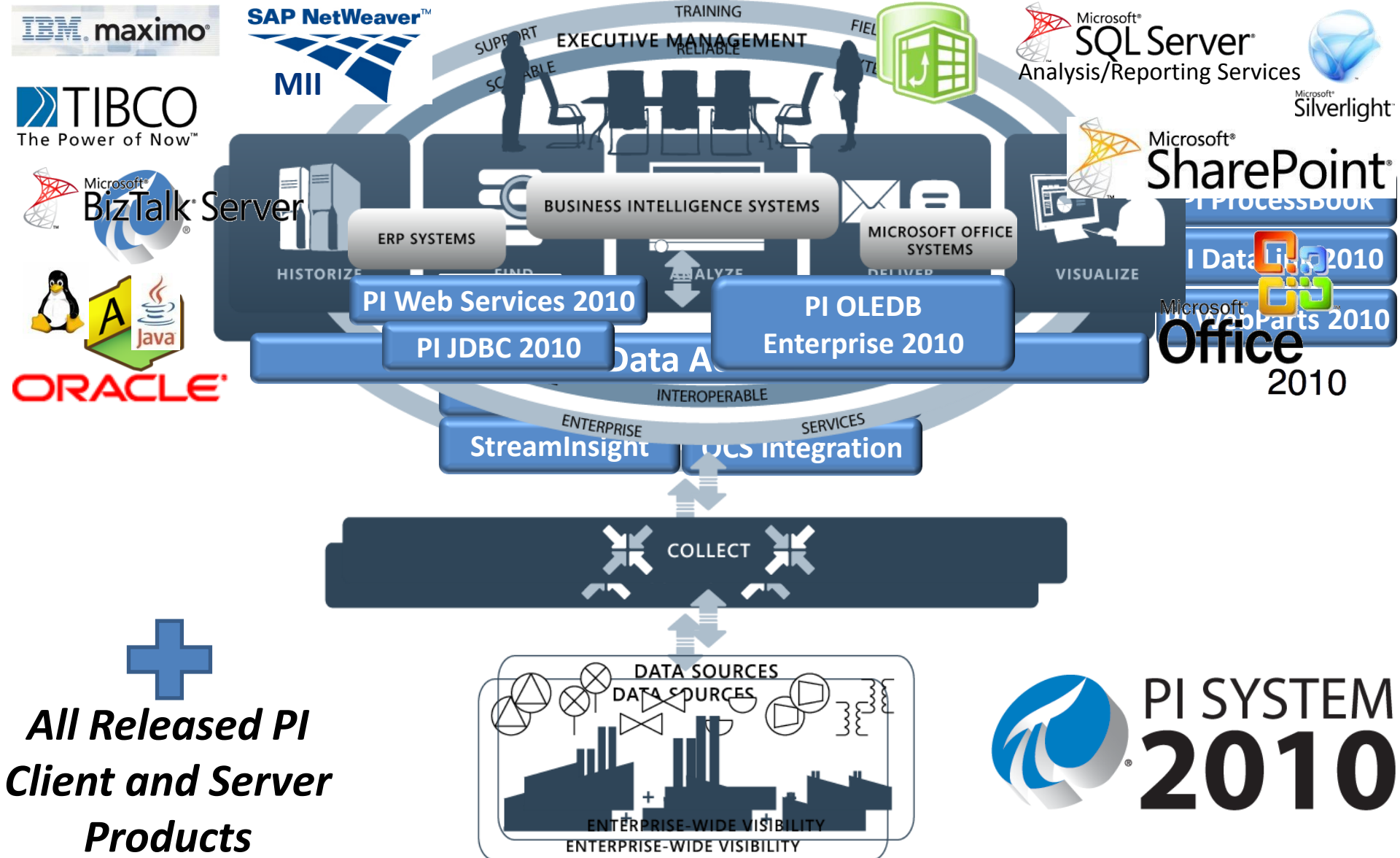
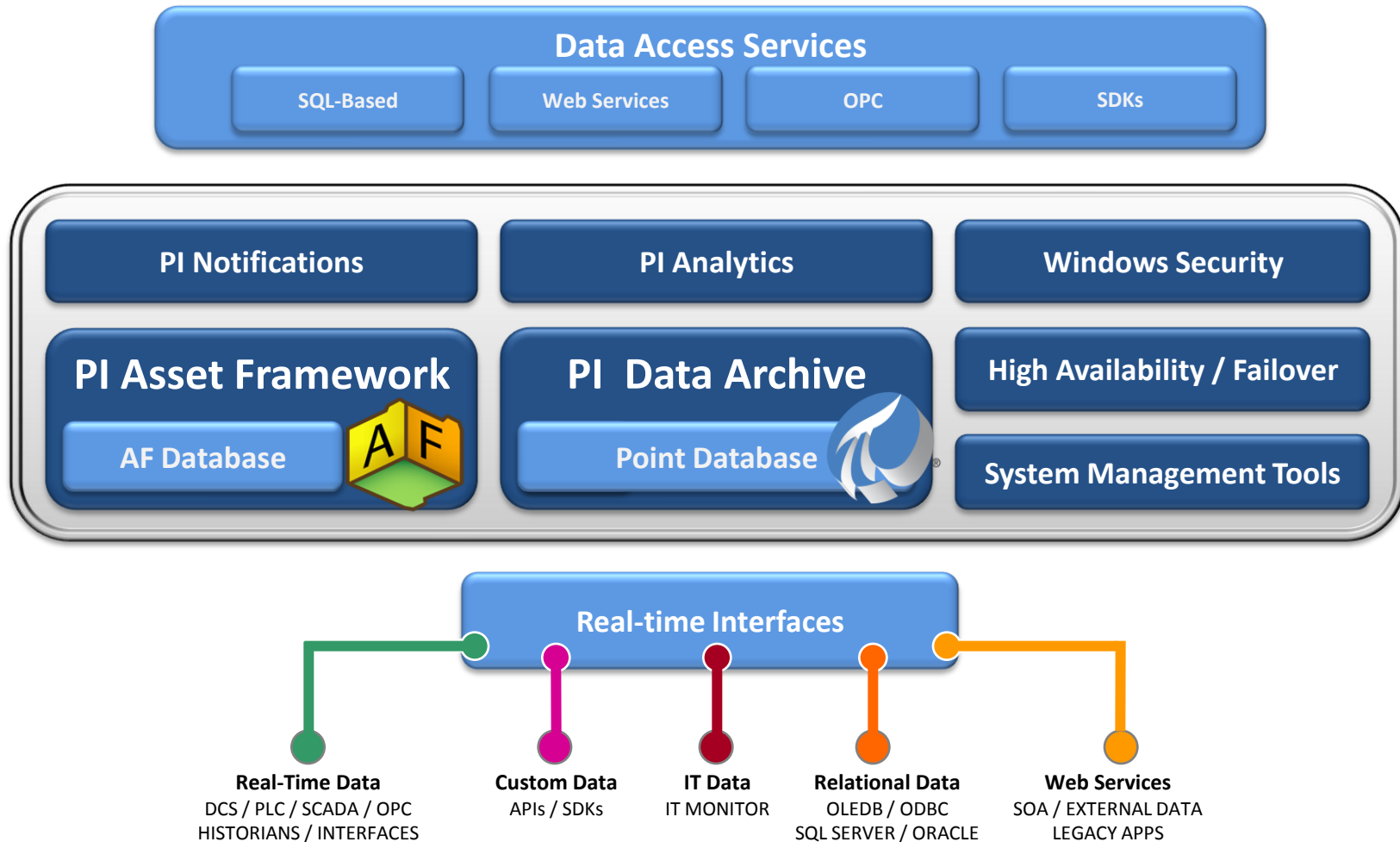


AF and Analytics

Empowering Business in Real Time.

© Copyright 2010, OSIsoft LLC. All rights Reserved.







Scalability

Templates,
Models, etc.

Millions of
assets



Usability

Unified Data
Access

Search

Flexible
security



Reliability

HA
Solutions

Windows
Security

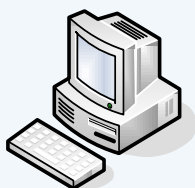
Preserve Your Investment: Displays, Calcs, Apps

Mixed Applications

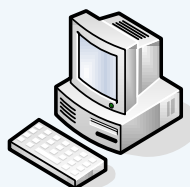
MDB based Applications



PI DataLink



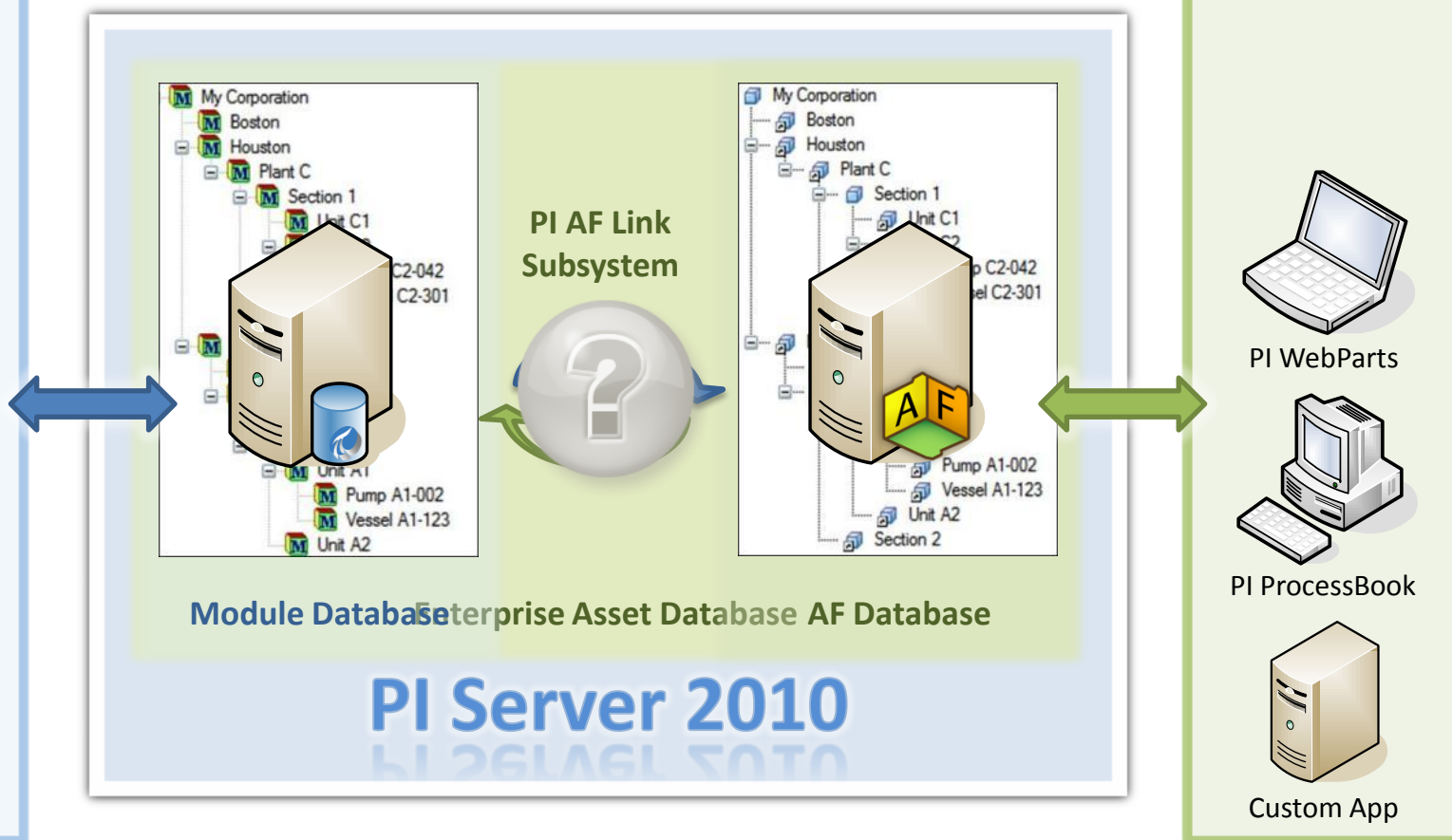
IT Monitor



BatchView



PI ACE



Upgrade Steps

1. Install or Access SQL Server
2. Install AF Server 2010
3. Prepare your Module Database
4. Upgrade to PI Server 2010
5. Enjoy AF! (MDB still available)



- PI AF is now the system-of-record for MDB
- PI AF 2010 Enhanced to support demands of two-way multi-threaded synchronization with MDB
- You should develop new asset-based applications using PI AF (AF SDK, PI OLEDB Enterprise, PI Web Services)
- OSIsoft will maintain support for MDB applications
 - PI ACE
 - PI Batch
 - Your Applications

- Use **OSIsoft.PB.MDB2AFPath** Assembly Installed into the GAC with PI ProcessBook 3.2 and PI WebParts 2010.

```
public static bool Translate(string mdbFullPath,  
                             out string afFullPath,  
                             out string error)
```

MDB Path Format:

\\piserver\module

\\piserver\module|alias

\\piserver\module||property



AF Path Format:

\\afserver\database\element

\\afserver\database\element|attribute

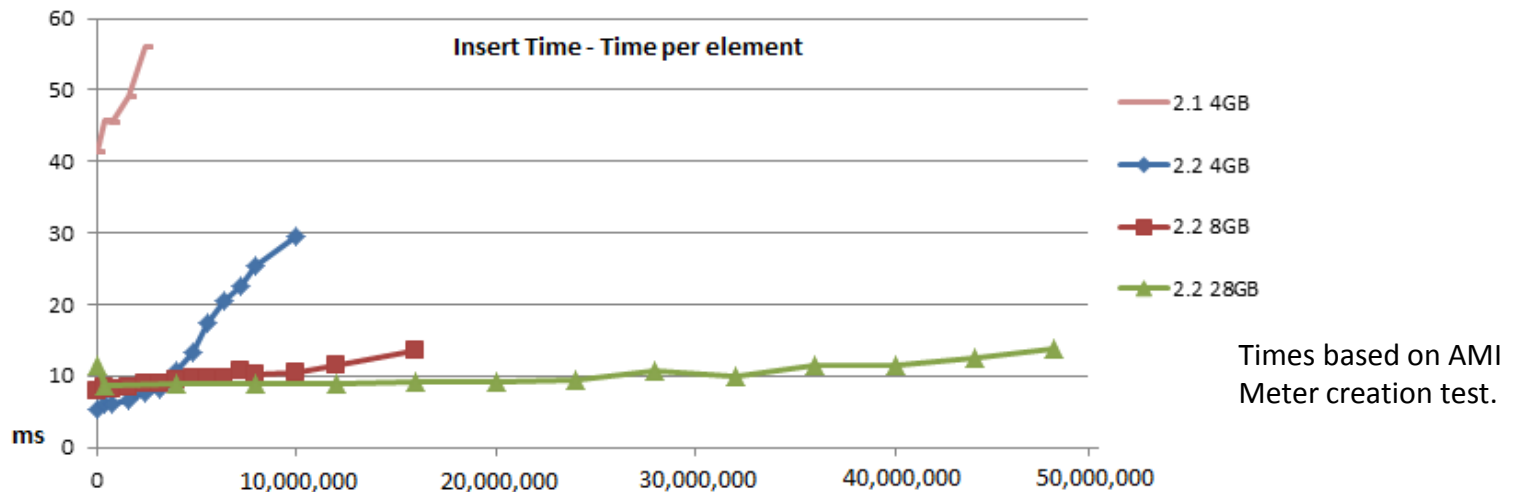
Uses AF Element established by the PI 2010 AF Link sub-system

Add PI AF capabilities to your Applications



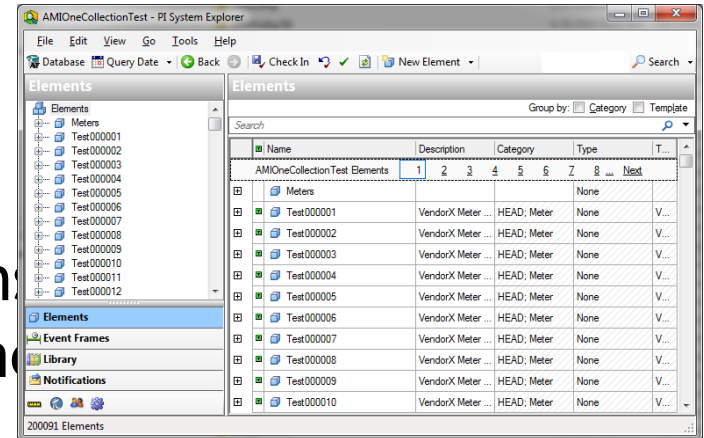
- **Find / Search**
- **Bulk Operations**
- Notifications
- Templates
- Relational Data
- Custom data sources
- Units of Measure
- GUI Components
- Relationships and Modeling
- Import / Export

- Element Creation
 - 10x increase in element creation performance
 - 10x improvement in element scalability



- Support for roughly 10 million* templated elements
(* can vary significantly based on element structure and use)

- Paging of Collections
 - Support for large element collections
- Improved behavior for applications processes/threads add to the same



AF Builder for Excel allows creation or modification of:

- Elements
- Templates
- Categories
- Enumeration Sets
- Notifications
- Analyses
- Event Frames

AF Builder for Excel



Book1 - Microsoft Excel

PI System: PIAFPERF
Database: Chocolate Milk Tutorial

Refresh

Select All
Deselect All

Delete Export

Library Contacts Elements Analyses Notifications Event Frames

PIAF Configuration Team

Connection Edit PIAF

A1 fx

A B C D E F G H L M N O

1
2
3

Book1.xlsx - Microsoft Excel

Home Insert Page Layout Formulas Data Review View Developer Add-Ins

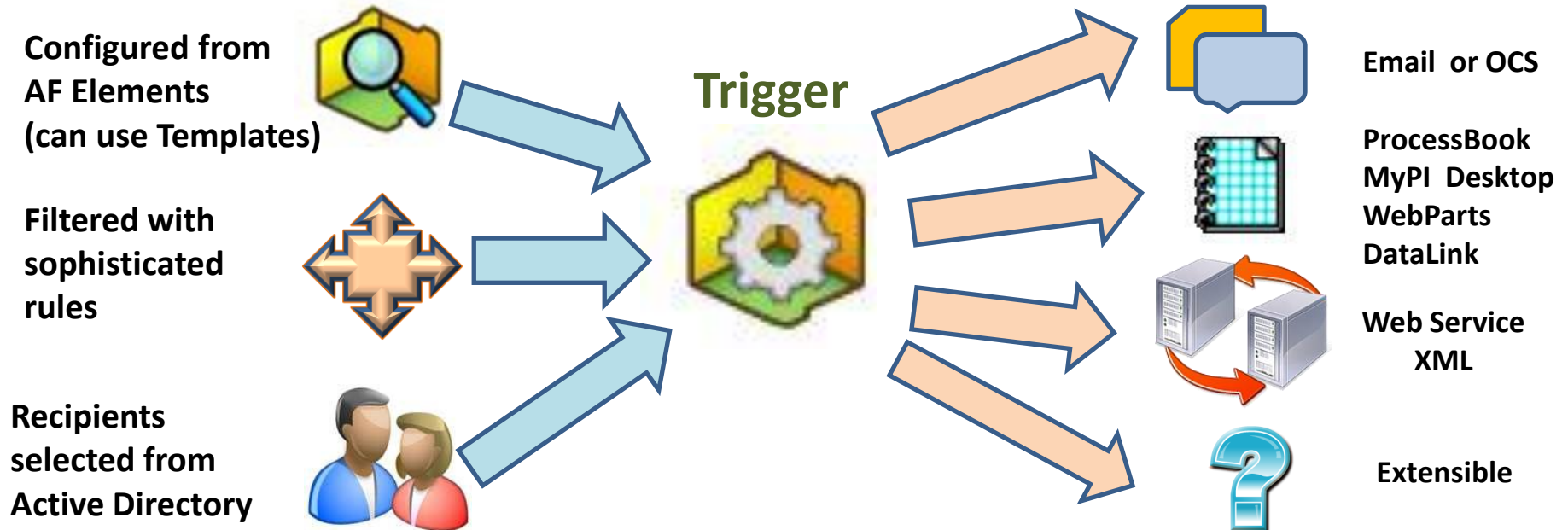
Get External Data Refresh All Edit Links Connections Sort Filter Advanced Text to Columns Remove Duplicates What-If Analysis Data Validation Consolidate Group Ungroup Subtotal Outline

C18 fx

| | B | C | D | E | F | G | H |
|----|----------|---|--------------|-----------|-------------|-----------------|----------|
| 1 | assetnum | description | manufacturer | serialnum | failurecode | changedate | changeby |
| 2 | 11200 | HVAC System- 50 Ton Cool Cap/ 450000 Btu Heat Cap | TRN | 3481-52 | | 2/7/2005 10:09 | WILSON |
| 3 | 11210 | Circulation Fan- Centrifugal/ 20/000 CFM | TRN | 3749-9 | | 2/7/2005 10:11 | WILSON |
| 4 | 11211 | Motor Starter- Size 2/440v/3ph/60cy | WES | S2DNGB | | 2/7/2005 10:11 | WILSON |
| 5 | 11220 | Electrical Control Panel- HVAC System | WES | 24096-2 | | 12/7/1999 21:17 | MAXIMO |
| 6 | 11230 | Emergency Generator | WES | 32331-4 | | 2/7/2005 10:14 | WILSON |
| 7 | 11240 | Circulation Fan- Centrifugal/ 20/000 CFM | TRN | 3749-9 | | 2/4/2005 16:38 | WILSON |
| 8 | 11250 | Circulation Fan- Centrifugal/ 20/000 CFM | TRN | 3749-9 | BLDGS | 2/7/2005 10:14 | WILSON |
| 9 | 11300 | Reciprocating Compressor- Air Cooled/100 CFM | IR | 43960 | | 2/7/2005 10:15 | WILSON |
| 10 | 11340 | Motor Starter- Size 4/NEMA 12/440v/3ph/60hz | WES | 23-4630 | | 2/7/2005 10:15 | WILSON |
| 11 | 11400 | Boiler- 50,000 Lb/Hr/ Gas Fired/ Water Tube | BWC | 66392 | BOILERS | 2/7/2005 10:16 | WILSON |
| 12 | 11430 | Centrifugal Pump 100GPM/60FT HD | IR | 377-9A | PUMPS | 2/9/2005 8:01 | WILSON |
| 13 | 11450 | Centrifugal Pump 100GPM/60FTHD | IR | 377-9B | PUMPS | 2/9/2005 8:24 | WILSON |
| 14 | 11460 | Burner, Gas Fired- For Boiler | BWC | 373-RH | BURNERS | 12/7/1999 21:27 | MAXIMO |
| 15 | 11470 | Centrifugal Pump 100 GPM, 60 FT-HD | IR | 377-9C | PUMPS | 2/11/2008 12:31 | MAXADMIN |
| 16 | 11480 | Centrifugal Pump 100 GPM, 60 FT-HD | IR | 377-9D | PUMPS | 3/30/1999 22:16 | MAXIMO |

Sheet1 Sheet2 Sheet3

Ready 100%



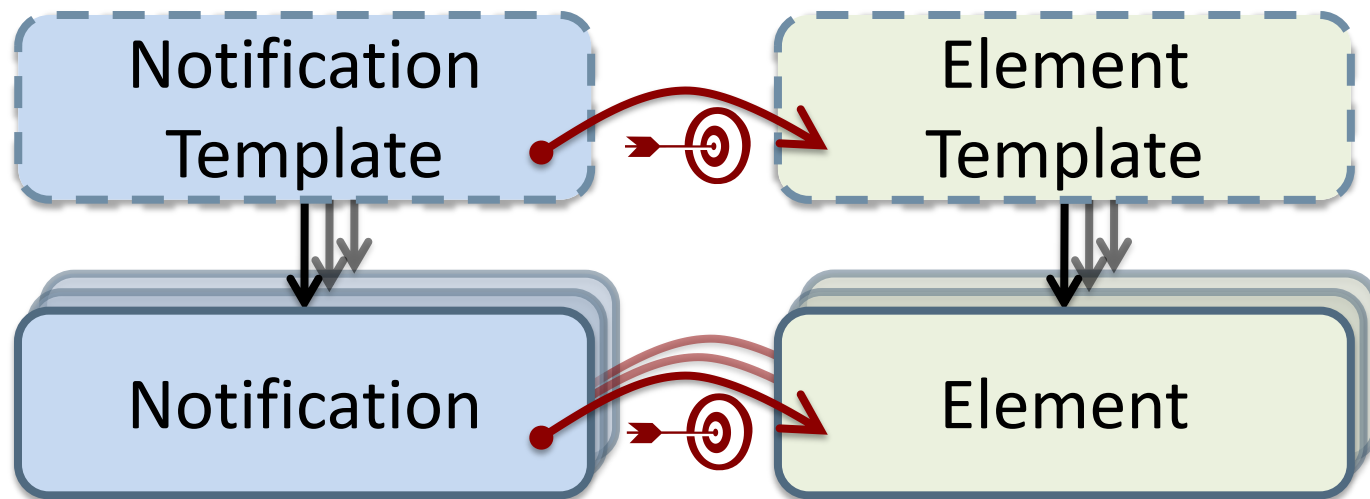
Features

- Templates
- Custom Content
- Acknowledgement and Escalation

Delivery Channels

- User can create their own
- OSIsoft vCampus – XML & Skype

- Enable rapid and automatic creation of maintainable notifications



- **Message Formatting**

- Control appearance of subject and body

- **Performance**

- **History retrieval** is improved by an order of magnitude
- Native 64-bit operating system support

- **Internationalization**

Subject: High temp for server [\\PIANODEMO\DM3\SL03-Database1](#) in Rack 23

Server [\\PIANODEMO\DM3\SL03-Database1](#) CPU exceeds temperature limit.

| Trigger Attribute | Value |
|--------------------|-------|
| CPU Temp | 72 °C |
| System Temperature | 62 °C |

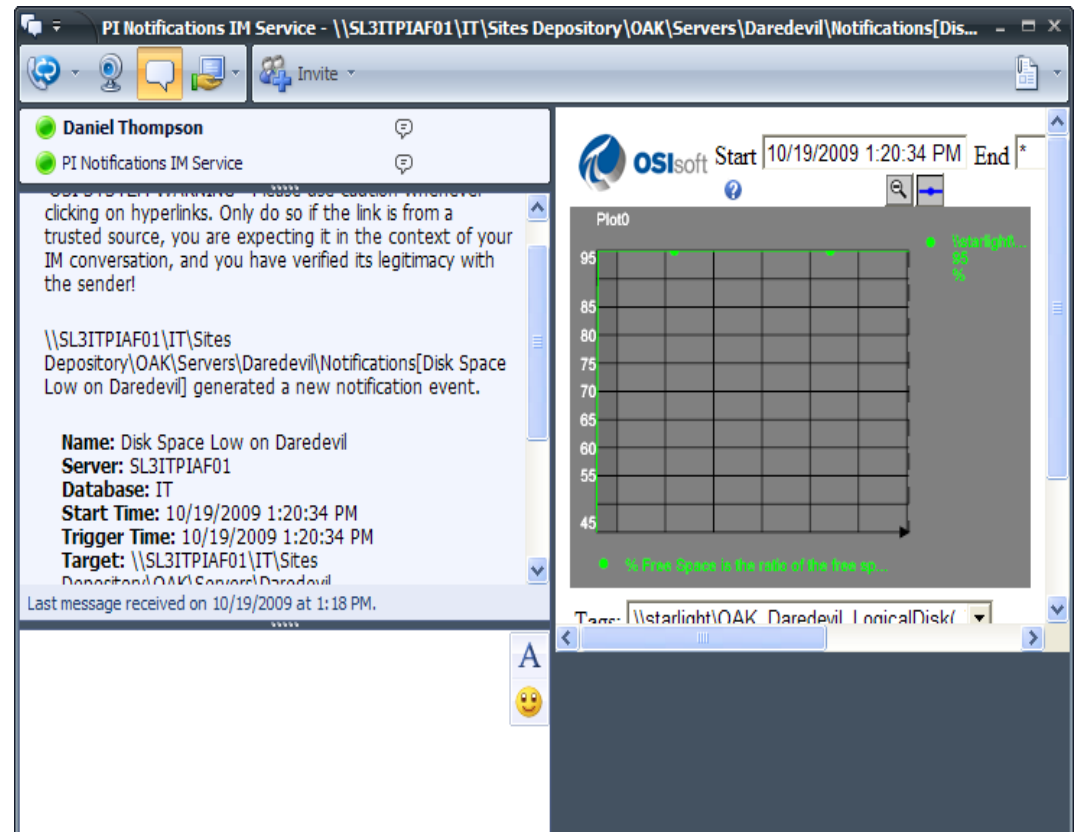


- Native Delivery Channel
- Supports presence and Instant Messaging (IM)
- Applications for phones

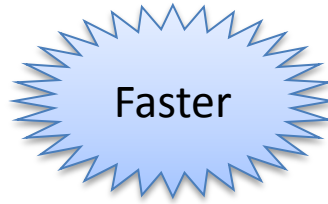
Windows Mobile

BlackBerry

iPhone



- PI ACE 2010



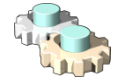
- PI for StreamInsight



- Multiple Schedulers



ACE Scheduler 1



ACE Scheduler N

- Performance Improvements
 - Components re-written in .NET



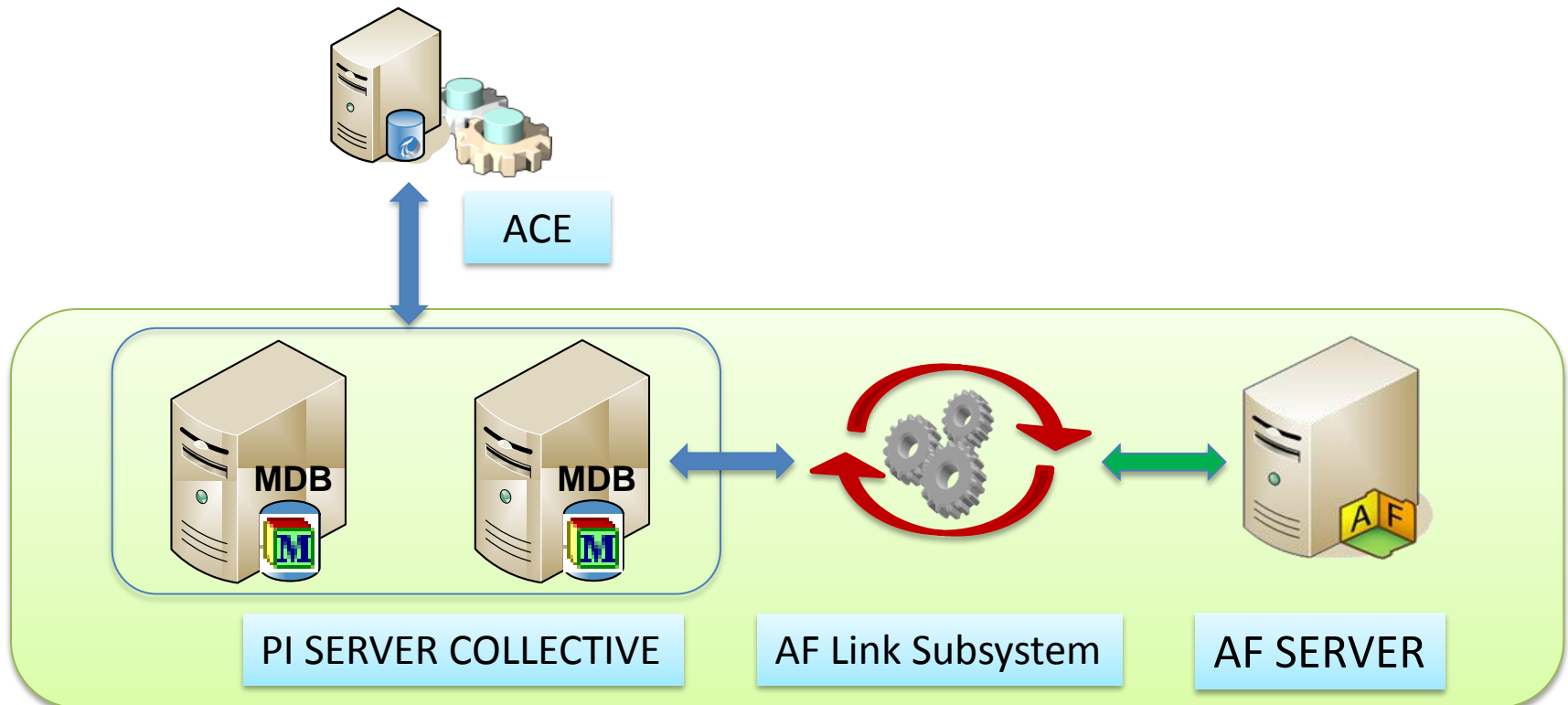
- Visual Studio 2010 support



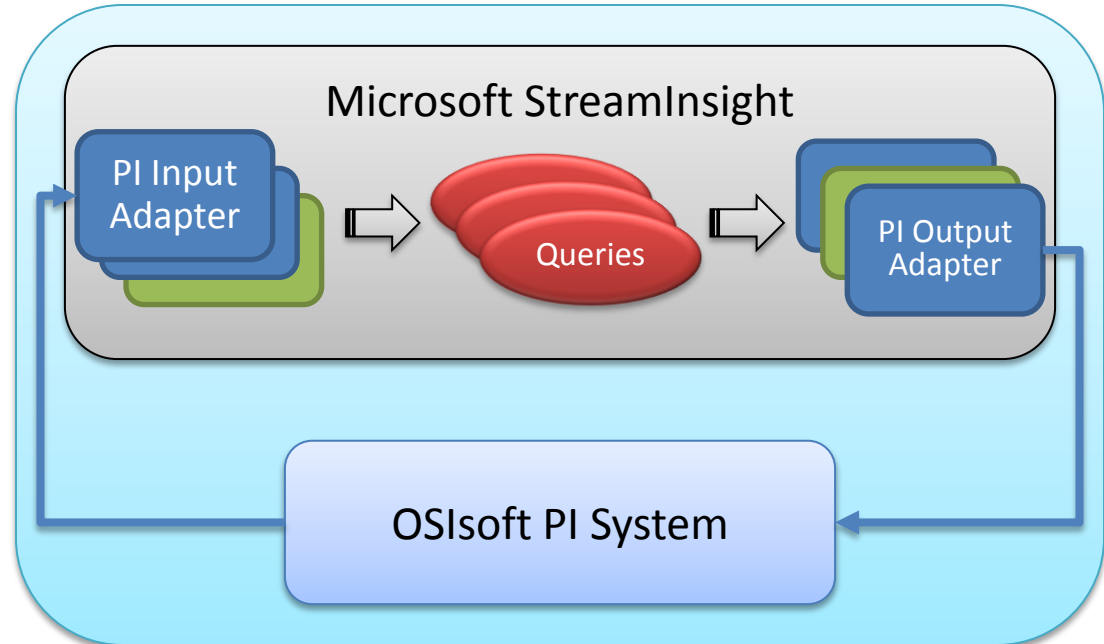
- Native 64-bit operating system support



- PI Server 2010 enables MDB to AF link and synchronization



- Data Access to the PI System for Microsoft StreamInsight
- Developers can create applications with StreamInsight using PI data
- Natural query language (LINQ)

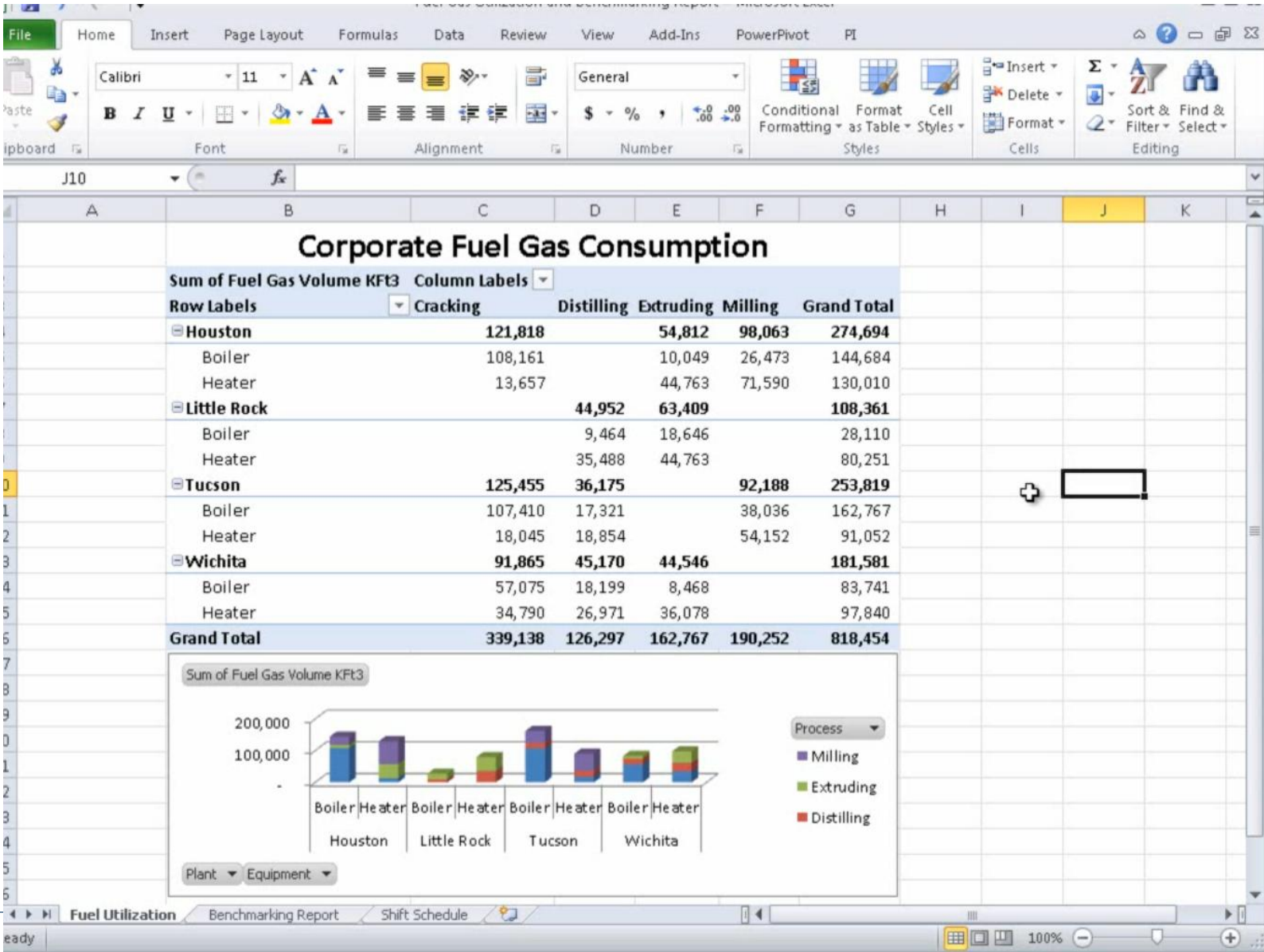


- StreamInsight is the Microsoft implementation of Complex Event Processing (CEP)
- What is CEP?
 - CEP is all about the ability to compute interesting patterns for events over multiple data sources
- How does StreamInsight work?
 - Developer creates queries based on business requirements
 - Queries are loaded by StreamInsight
 - Queries are executed based on time windows
 - Queries are applied to the data stream received during that period

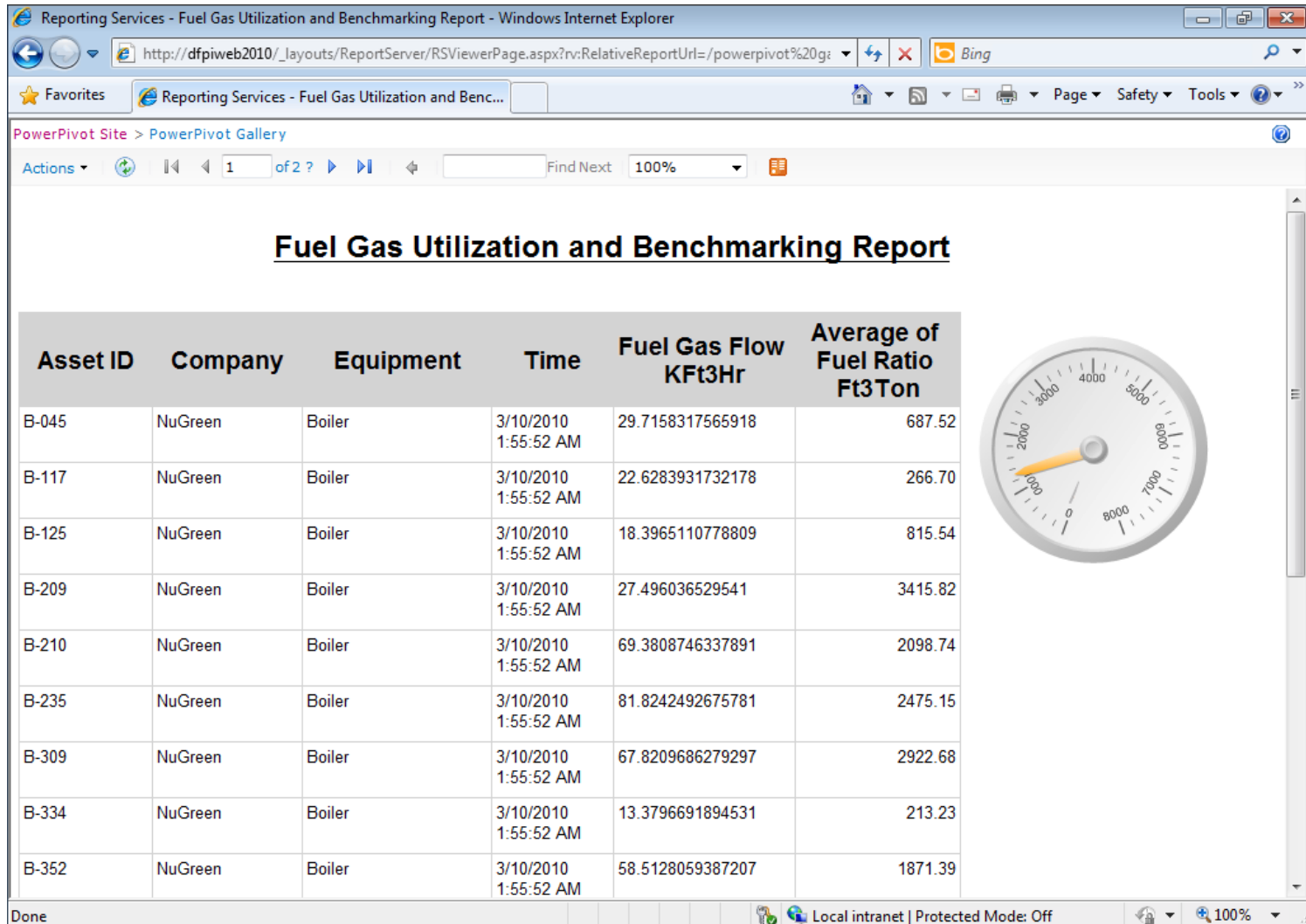
- PI OLEDB 64-bit
- PI JDBC 2010
 - Bring data to the Java world
- PI OLEDB Enterprise 2010
 - Brand new product
 - Access to AF via SQL
 - Supports custom applications and many integration scenarios
 - PI WebParts
 - PowerPivot in Excel
 - SQL Server (Reporting/Analysis Services)



PI OLEDB Enterprise in Microsoft PowerPivot



PI OLEDB Enterprise in SQL Server Reporting Services



- Windows Integrated Security
 - PI SDK 1.3.6
- 64-bit
 - PI SDK 1.3.8
 - AF SDK 2.1
- Client-Side Buffering
 - PI SDK 2010 (coming)

