



OSIsoft®

Regional Seminar Series



## PI System Analytics

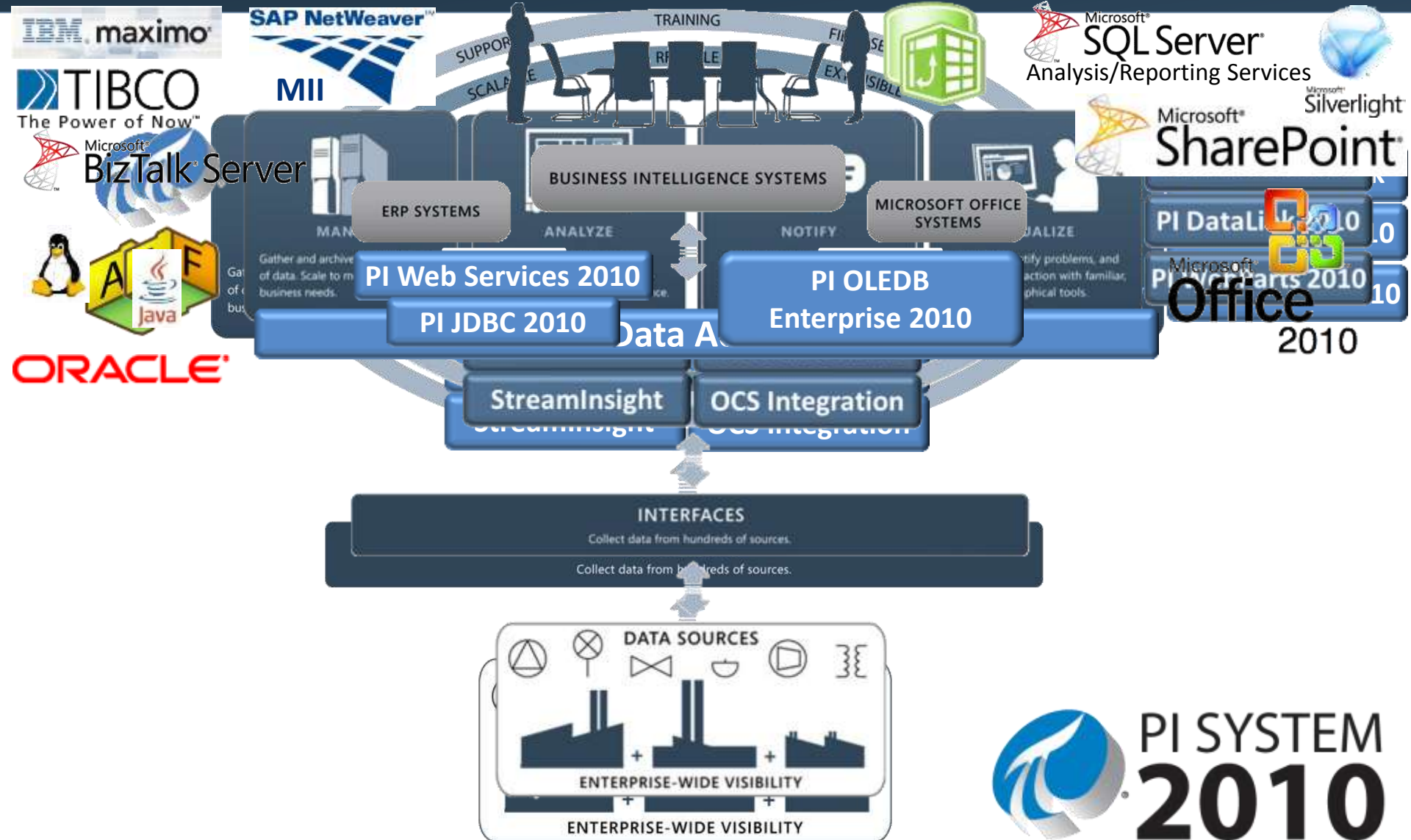
Glenn Moffett, Product Management, OSIsoft

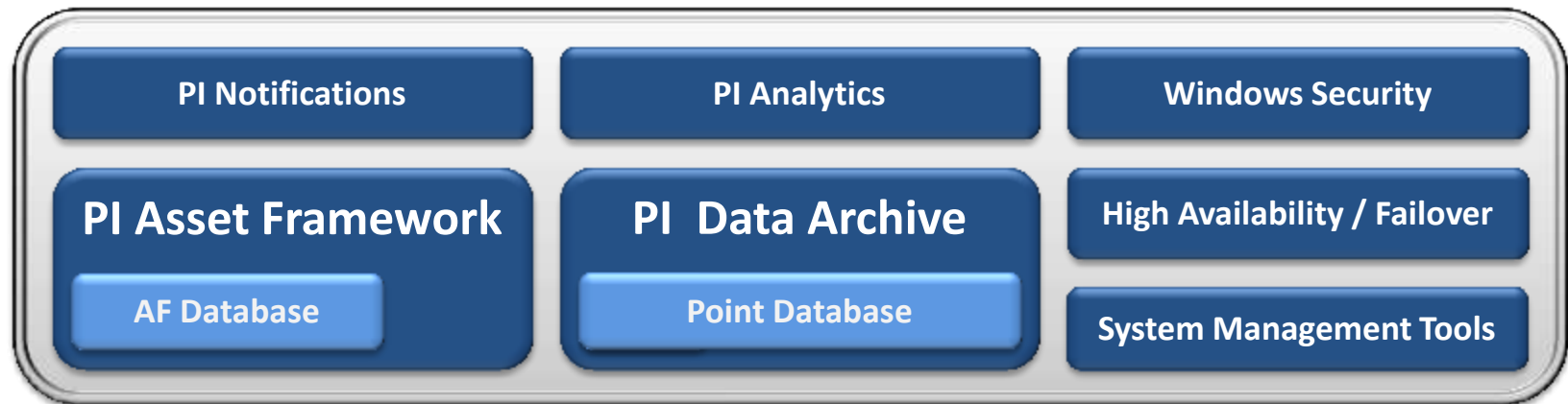
16<sup>th</sup> September 2010

Empowering Business in Real Time.

© Copyright 2010, OSIsoft LLC. All rights Reserved.

- PI Analytics
- PI Notifications
- Product Roadmap





## Regional Seminar Series



PI Analytics

September 2010

# PI Analytics - Components and Functionality



calculations



event based



PI data

- Performance Equations



- Totalizers



Sche User Configuration

- Alarms/Statistical Quality Control



- Advanced Computing Engine



- PI for StreamInsight\*



Programme Non-PI data

- PI Asset Framework supported Analytics\*



\* Future products

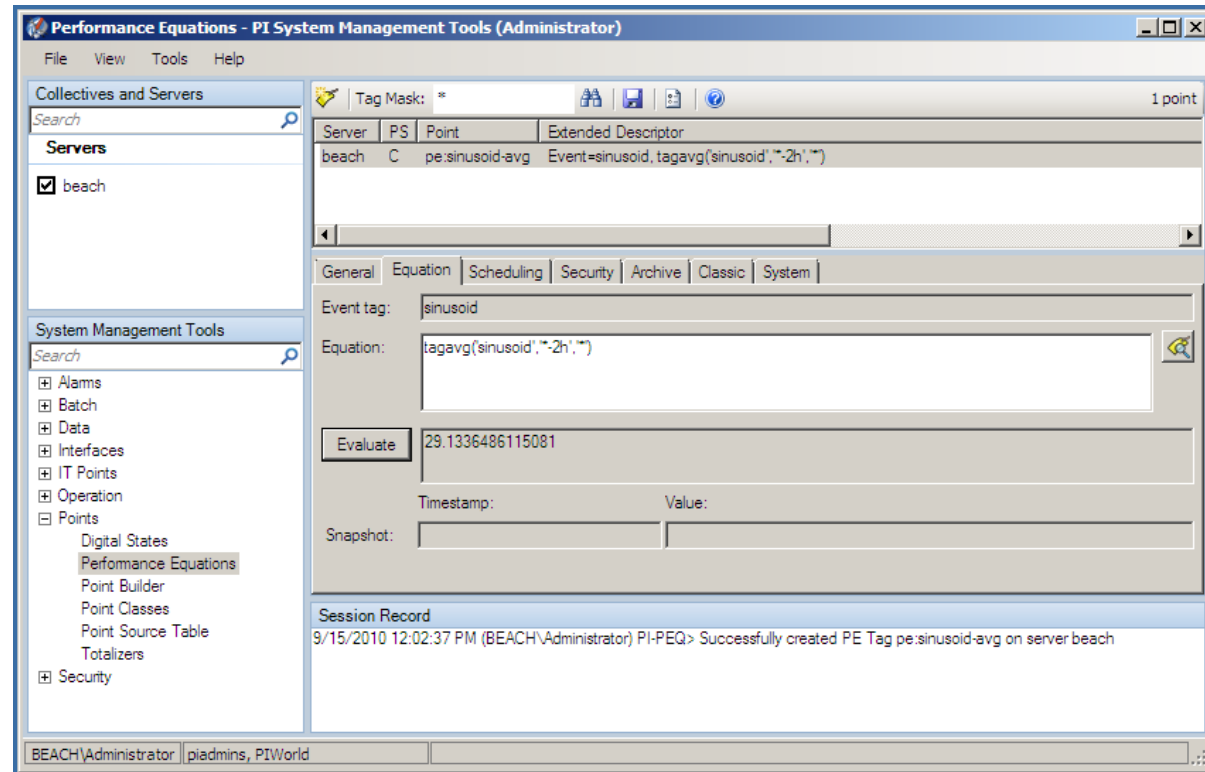
- Engineer requires a calculation based on flow rate
  - If 'tag.flow' > 100 then  
tagmax('tag.flow', '\*-1h', '\*\*', 95)  
else 'tag.flow'
- Determine utilization of the compressor for the past two days
  - Timeeq('Compressor:Run', '\*-2d', '\*', "Running")



- Expression syntax
  - If ... then .. Else
  - 'tag' + 'tag' + 'tag' + Avg('tag1', 'tag2')
- Library of functions
  - Tag average for a period of time
- Scheduler to run calculations
  - Time or event based
- Results are written to PI Historian



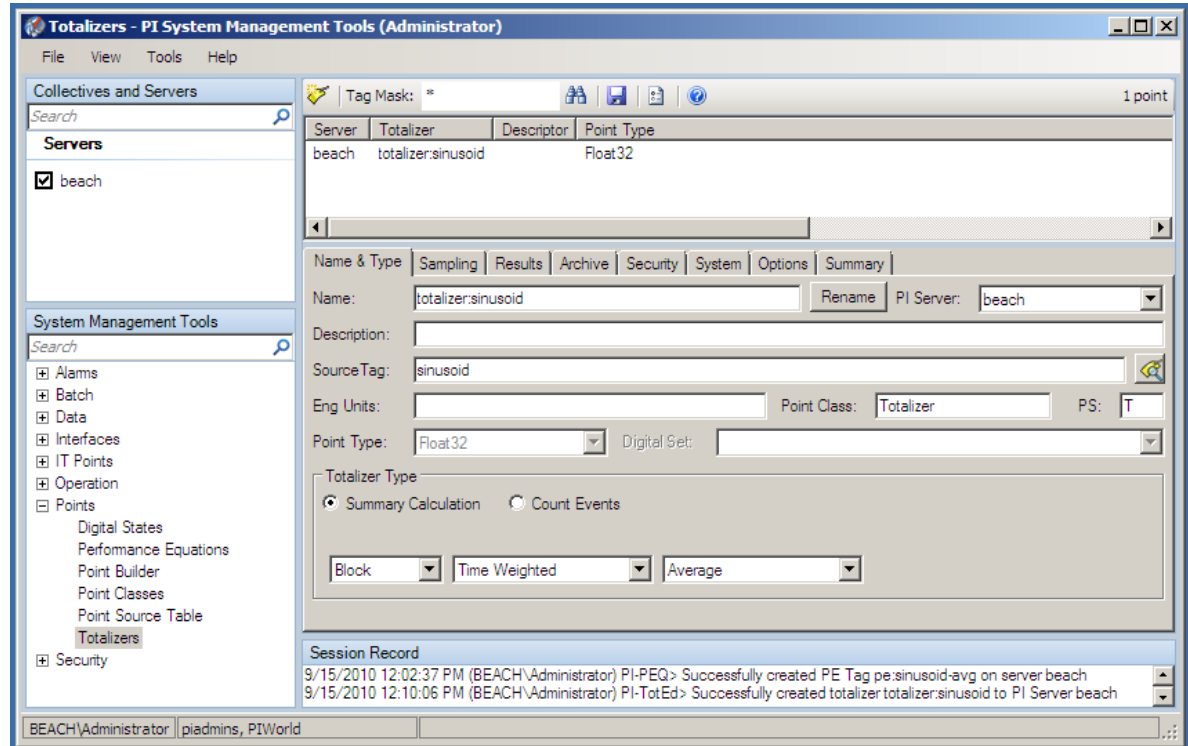
- System Management Tools
- Excel SMT add-in
- Asset Framework element template data reference
- Piconfig (command-line)



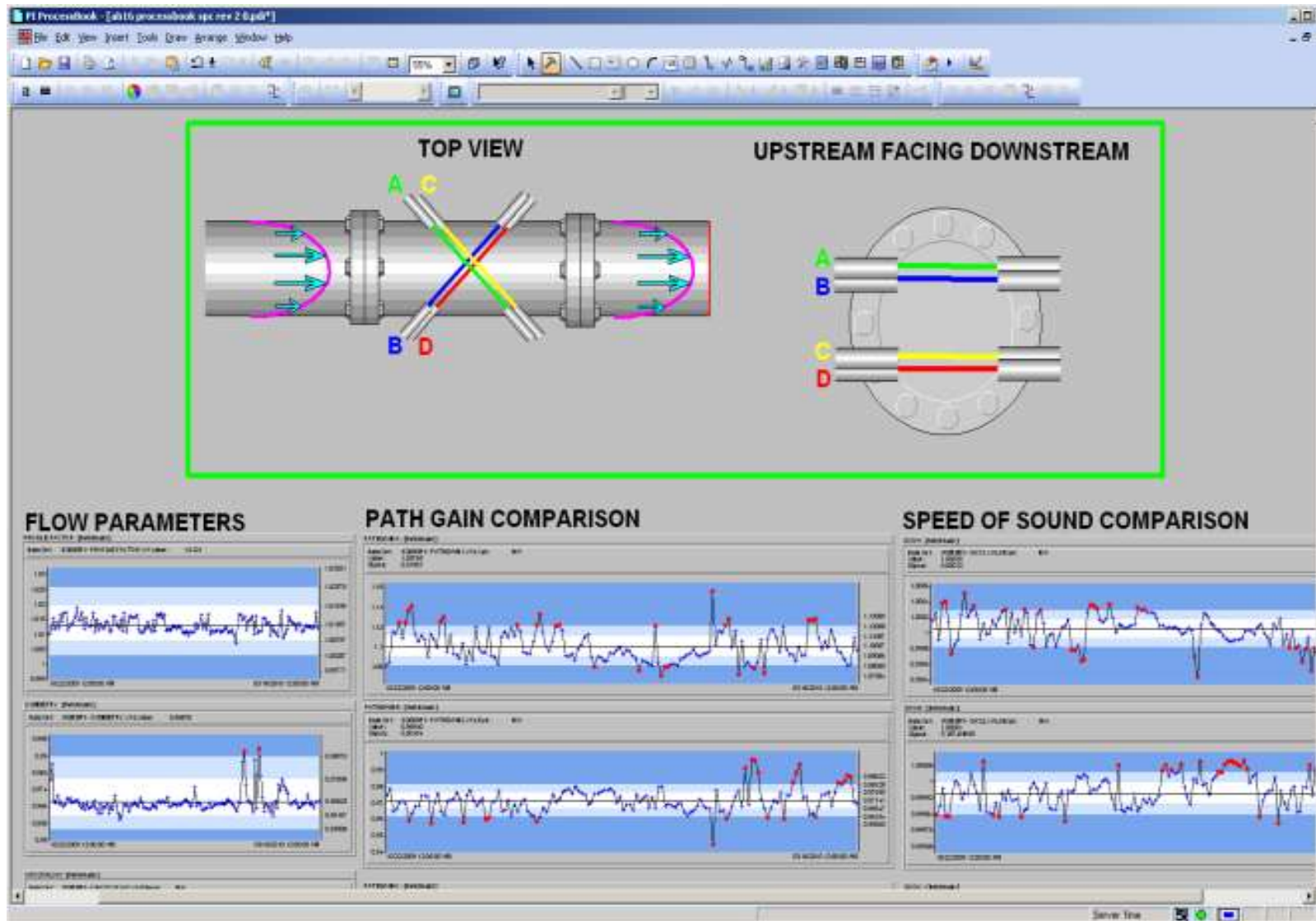
- Sum up end of day yields
- Total up flow volume during the day
- Totalize a value and then reset at the end of every shift
- Rolling 3 day average for scrubber output

- Perform summary calculations
  - Functions
    - Total, average, min, max
  - Scan modes
    - Natural or time scheduled
  - Reporting
    - During period and/or at the end of the period

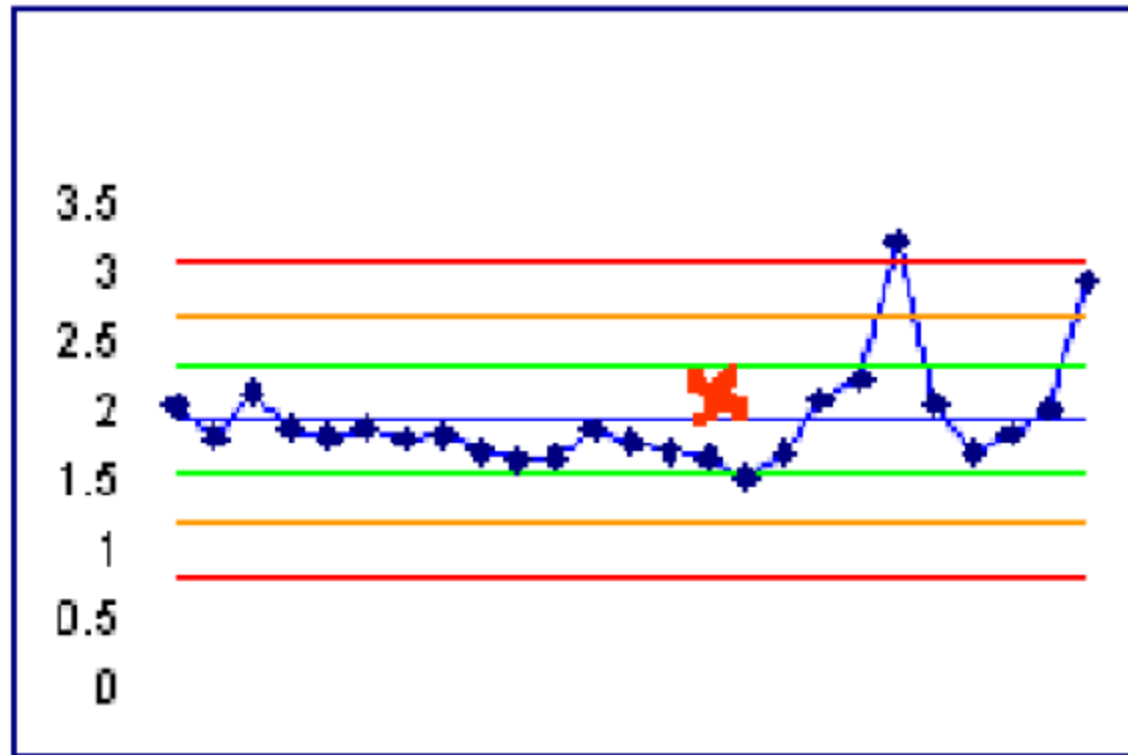
- System Management Tools
- Excel SMT add-in
- Asset Framework element template data reference
- Piconfig (command-line)



- Raw textiles
  - Set an alarm tag when 9 or more values are on the same side of a center line (defined value)
- Alliance pipeline use SQC as part of a low intervention initiative
  - Saved \$70,000 per facility
  - 4 million could have been saved if applied to 60 ultrasonic metering sites at inception



- Monitor the process for exceptions based on tests
- Western electric pattern tests
  - Outside one/two sigma
  - Outside control
  - One side of CL
  - **Stratification**
  - Mixture
  - Trend





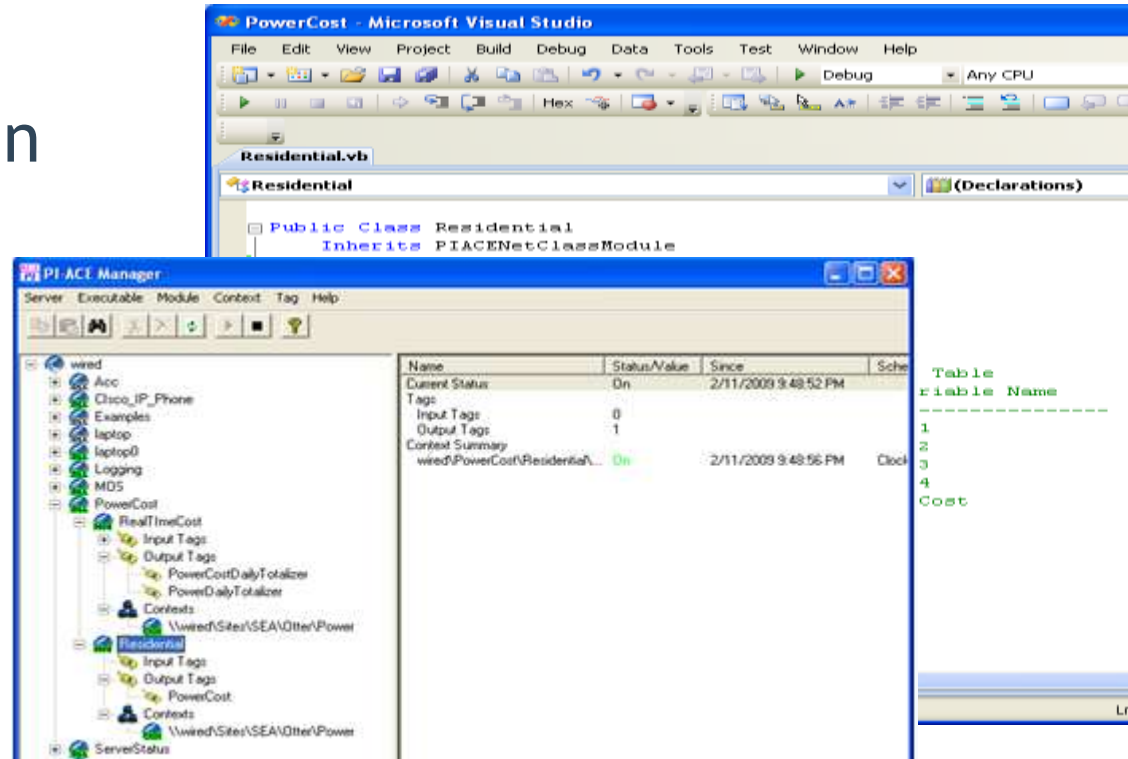
- Developer required to integrate information from remote system into the PI System
  - Access relational database
  - Create PI tag(s)
  - Perform calculation
  - Write data to the PI System
  - Scheduler to run at specified intervals

- Developer required to write a power curve calculation for a wind turbine
  - Source data is in the PI System
  - Results to be written to the PI System
- PI ACE provided the solution
  - Includes a curve function
  - Ability to store required parameters for calculation

- Create calculations using Visual Studio
- Wizard to configure access to PI data
- Full programming environment
- Create a calculation once and reuse

Allow user to focus on business rules

- Visual Studio add-in
  - develop
- Manager client
  - configure
- Scheduler
  - execute



## Regional Seminar Series



PI Analytics

Upcoming releases

September 2010

- Scheduled to be released later this year

- Multiple Schedulers



ACE Scheduler 1



ACE Scheduler N

- Performance Improvements
  - Components re-written in .NET



- Visual Studio 2010 support



- Native 64-bit operating system support



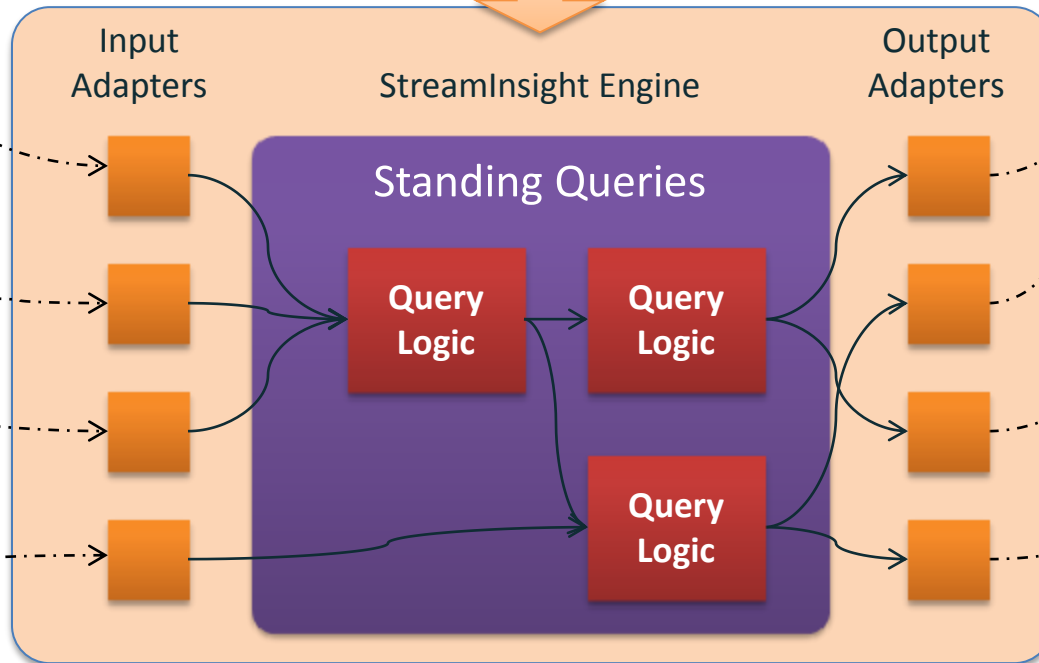
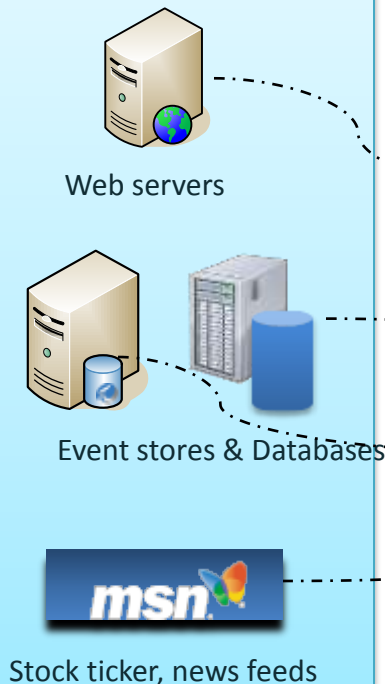
StreamInsight Application  
Development in C#, LINQ



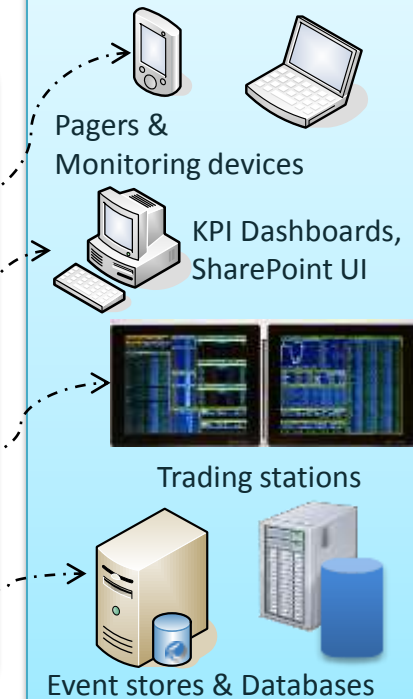
## StreamInsight Application at Runtime



### Event sources



### Event targets

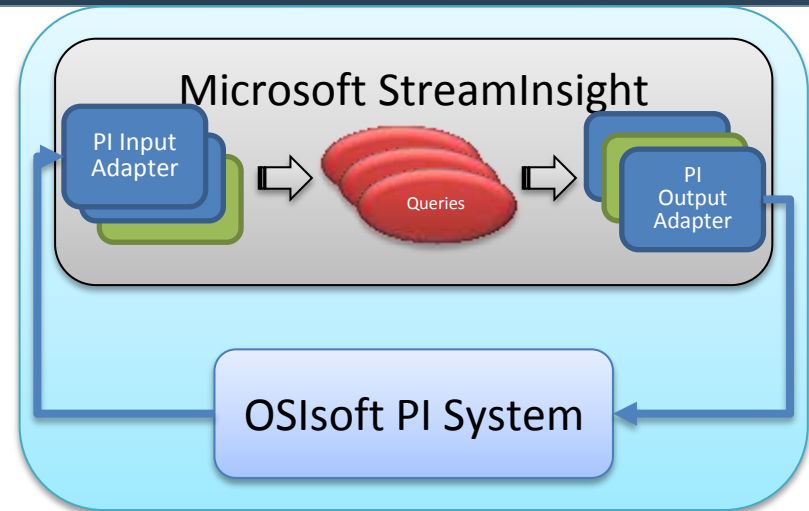




# OSIsoft PI for StreamInsight



- Key functionality
  - Provide Adapters for data access to and from the PI System
- OSIsoft and StreamInsight Benefits
  - StreamInsight analytics access to PI data from hundreds of data sources
  - Data store to serve and store real-time, historical data and analysis
  - Enable rich and expressive querying of PI data using time window processing
- OSIsoft vCampus Community Technology Previews
  - February 2010
  - July 2010
  - Release 2H 2010



- Oil customer commissioned Proof of Concept for Microsoft StreamInsight
- Scenarios
  - Data cleansing routines on data
  - Calculations based on time windows

- Training Material
  - [http://techsupport.osisoft.com/techsupport/nontemplates/Download%20Center/DownloadCenter.aspx?Download\\_content=Training+Materials](http://techsupport.osisoft.com/techsupport/nontemplates/Download%20Center/DownloadCenter.aspx?Download_content=Training+Materials)
- OSIsoft vCampus
  - Forums
  - PI for StreamInsight CTP software
  - PI ACE Beta software

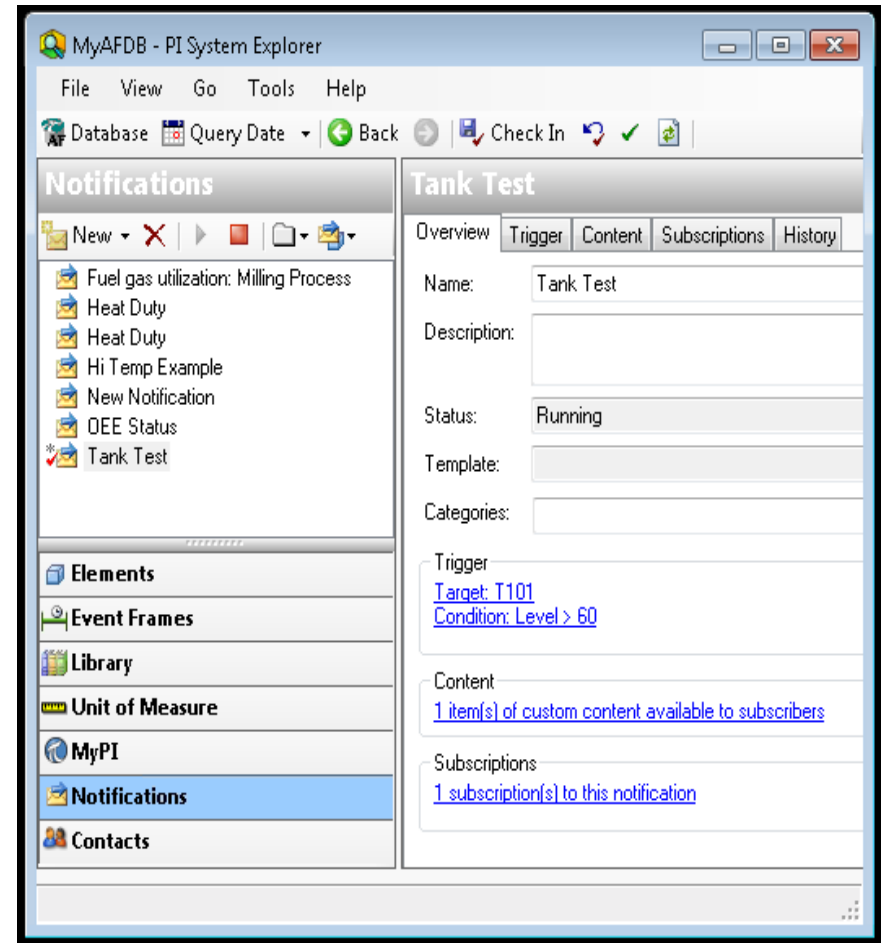
## Regional Seminar Series



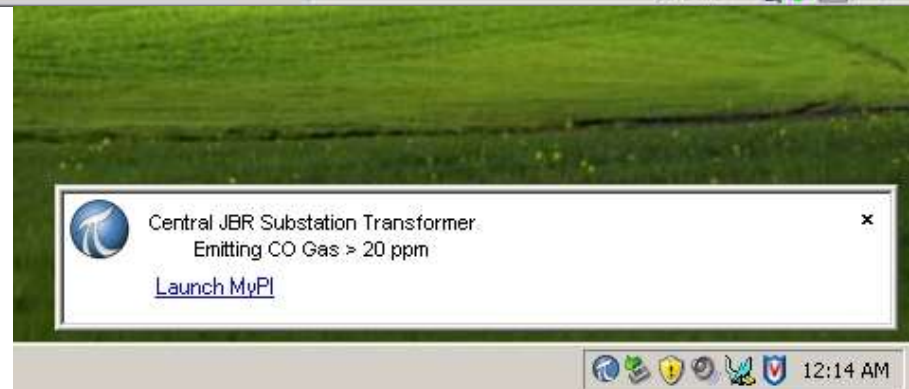
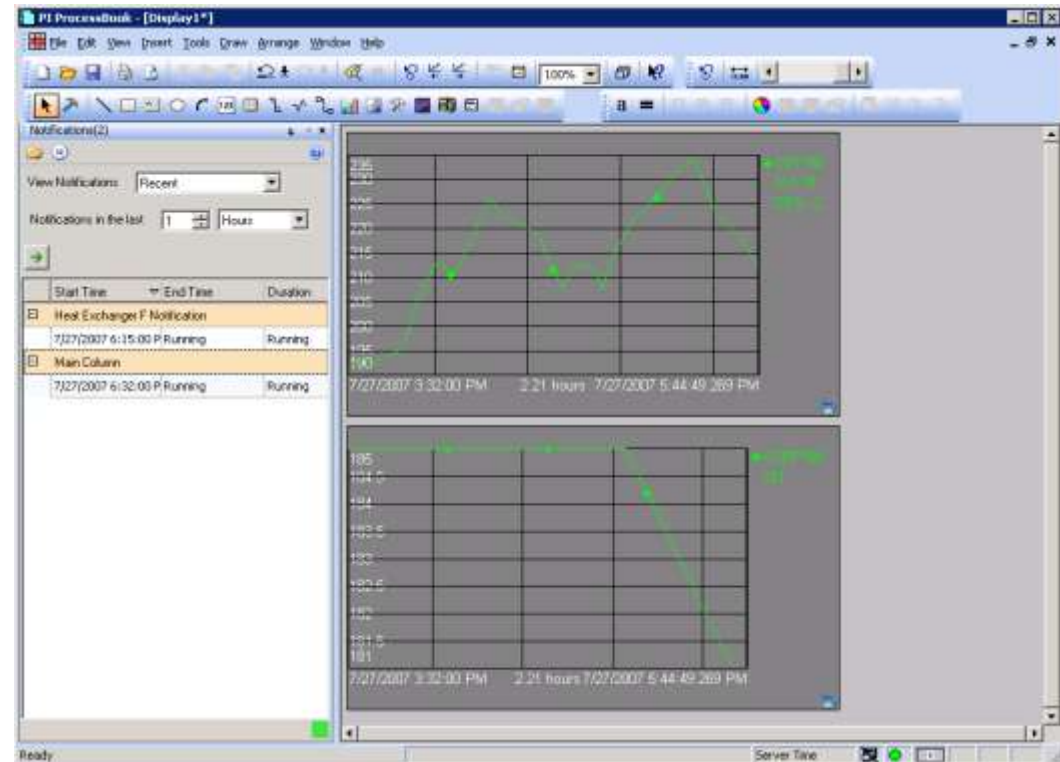
PI Notifications

September 2010

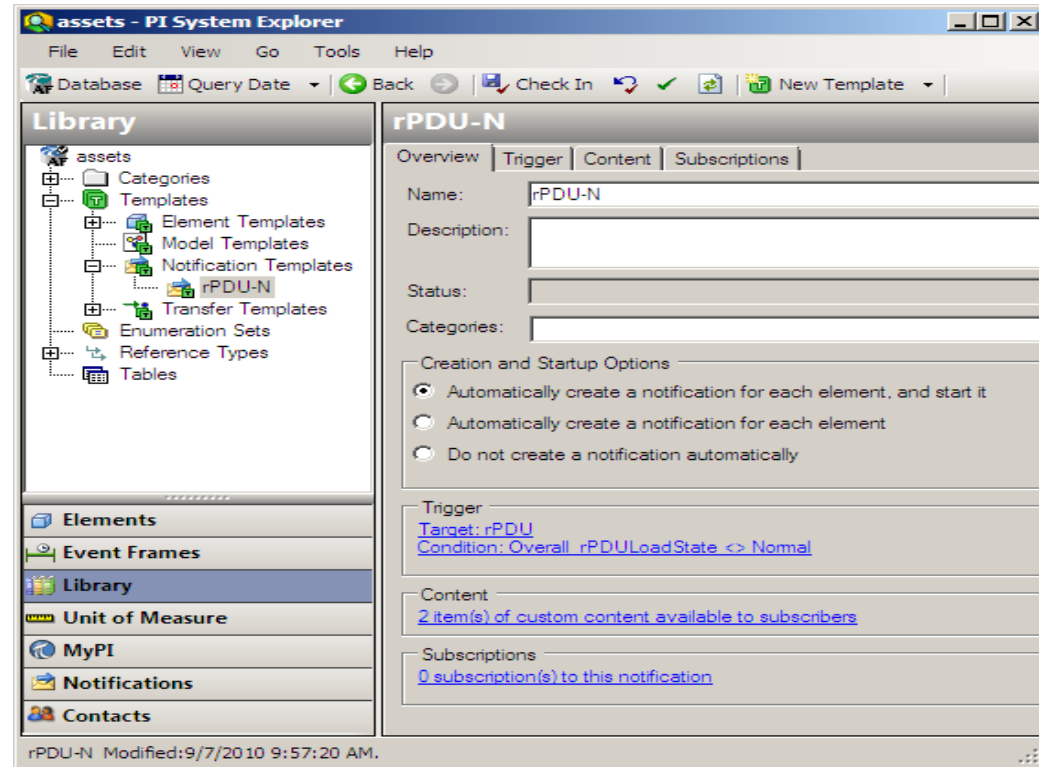
- Let one or more people or systems know an event has occurred
- Notifications combines
  - Trigger condition
  - Customizable content
  - Subscribers
  - Deliver the notification
  - Escalation
  - Acknowledgement



- PI ProcessBook add-in
- Microsoft Excel add-in
- Desktop Alert
- PI System Explorer

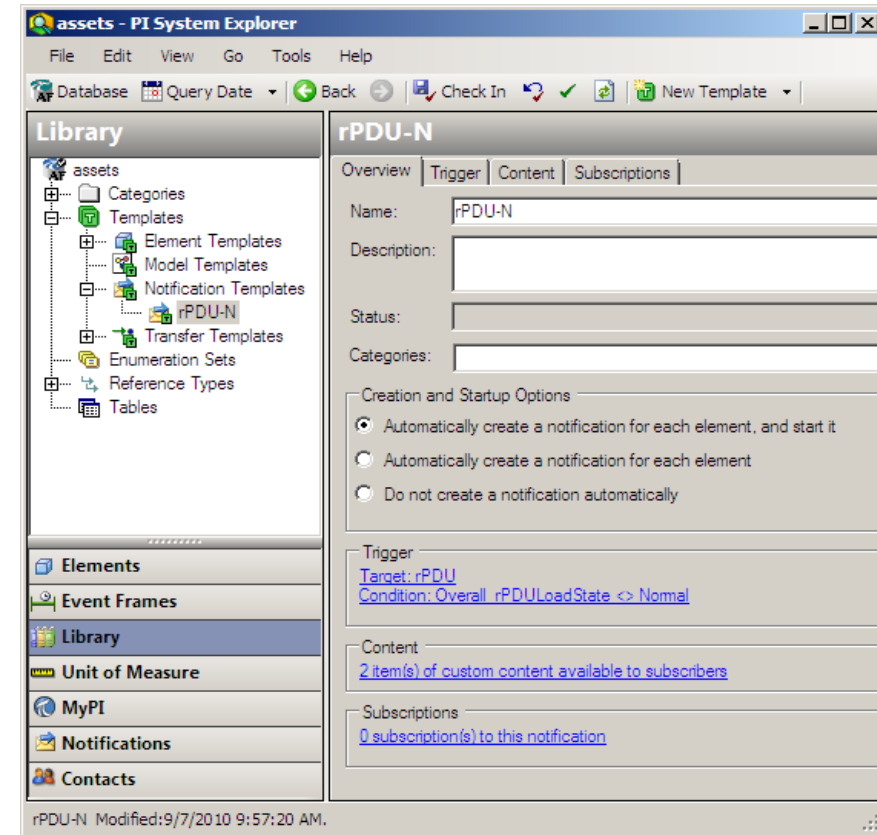


- PI System Explorer
- AN SDK/AF SDK
- Notification Templates

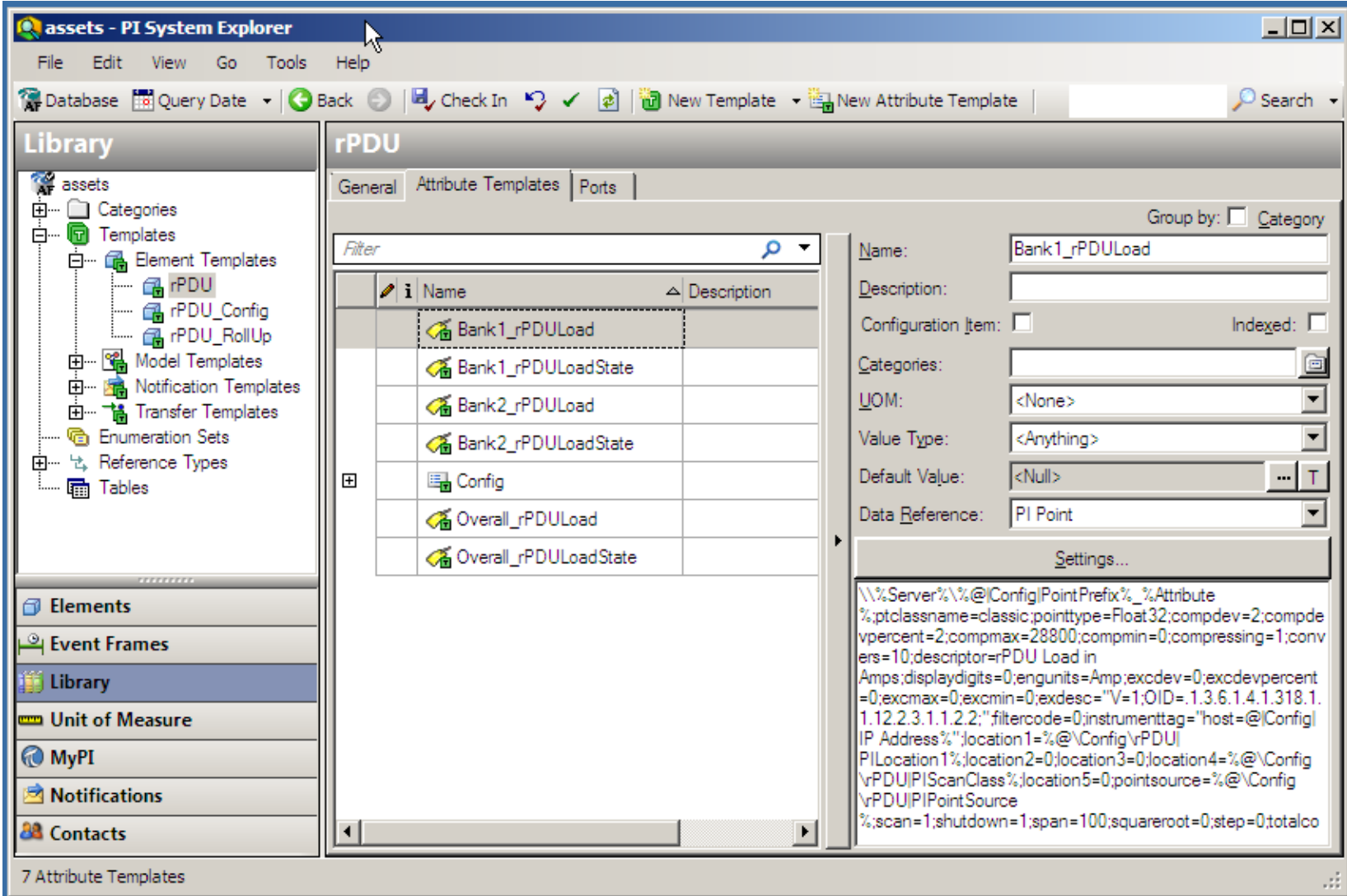




- Based on element templates
- Create template once
- Notification created when element created
- Options include
  - Create
  - Start



# Create Element Template - Step 1



The screenshot shows the 'assets - PI System Explorer' window. The left pane displays a tree view of the 'assets' library, with 'rPDU' selected under 'Element Templates'. The main pane shows the 'rPDU' configuration, with the 'General' tab active. A table lists several attributes, with 'Bank1\_rPDUload' selected. The right pane shows the configuration details for this attribute, including its name, description, categories, UOM, value type, default value, and data reference. The 'Settings...' button is also visible.

**Library**

- assets
  - Categories
  - Templates
    - Element Templates
      - rPDU (selected)
      - rPDU\_Config
      - rPDU\_RollUp
    - Model Templates
    - Notification Templates
    - Transfer Templates
    - Enumeration Sets
    - Reference Types
    - Tables

**Elements**

- Event Frames
- Library
- Unit of Measure
- MyPI
- Notifications
- Contacts

7 Attribute Templates

**rPDU**

General | Attribute Templates | Ports

Filter

Name	Description
Bank1_rPDUload	
Bank1_rPDUloadState	
Bank2_rPDUload	
Bank2_rPDUloadState	
Config	
Overall_rPDUload	
Overall_rPDUloadState	

Group by: ☐ Category

Name: Bank1\_rPDUload

Description:

Configuration Item: ☐ Indexed: ☐

Categories:

UOM: <None>

Value Type: <Anything>

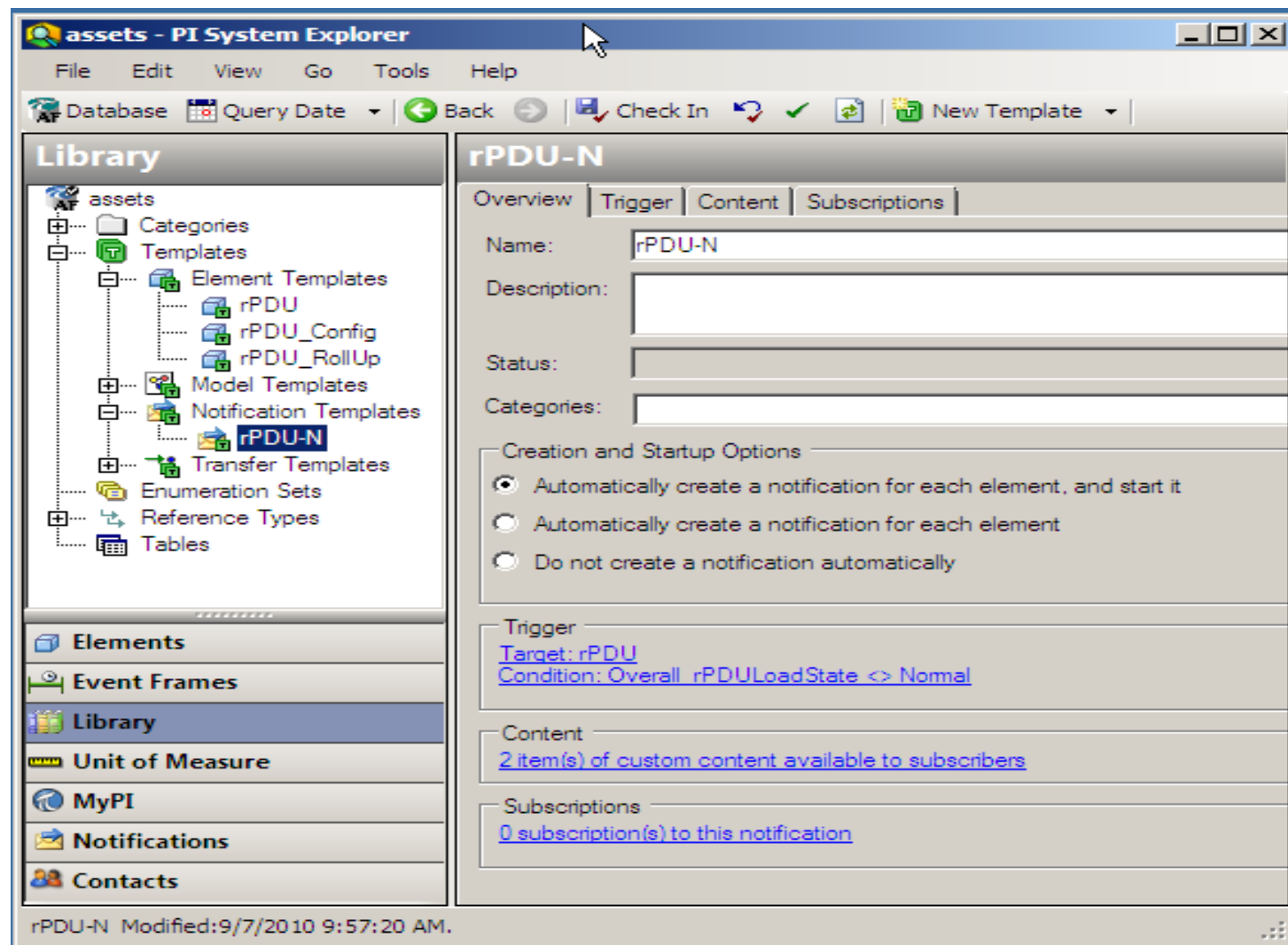
Default Value: <Null>

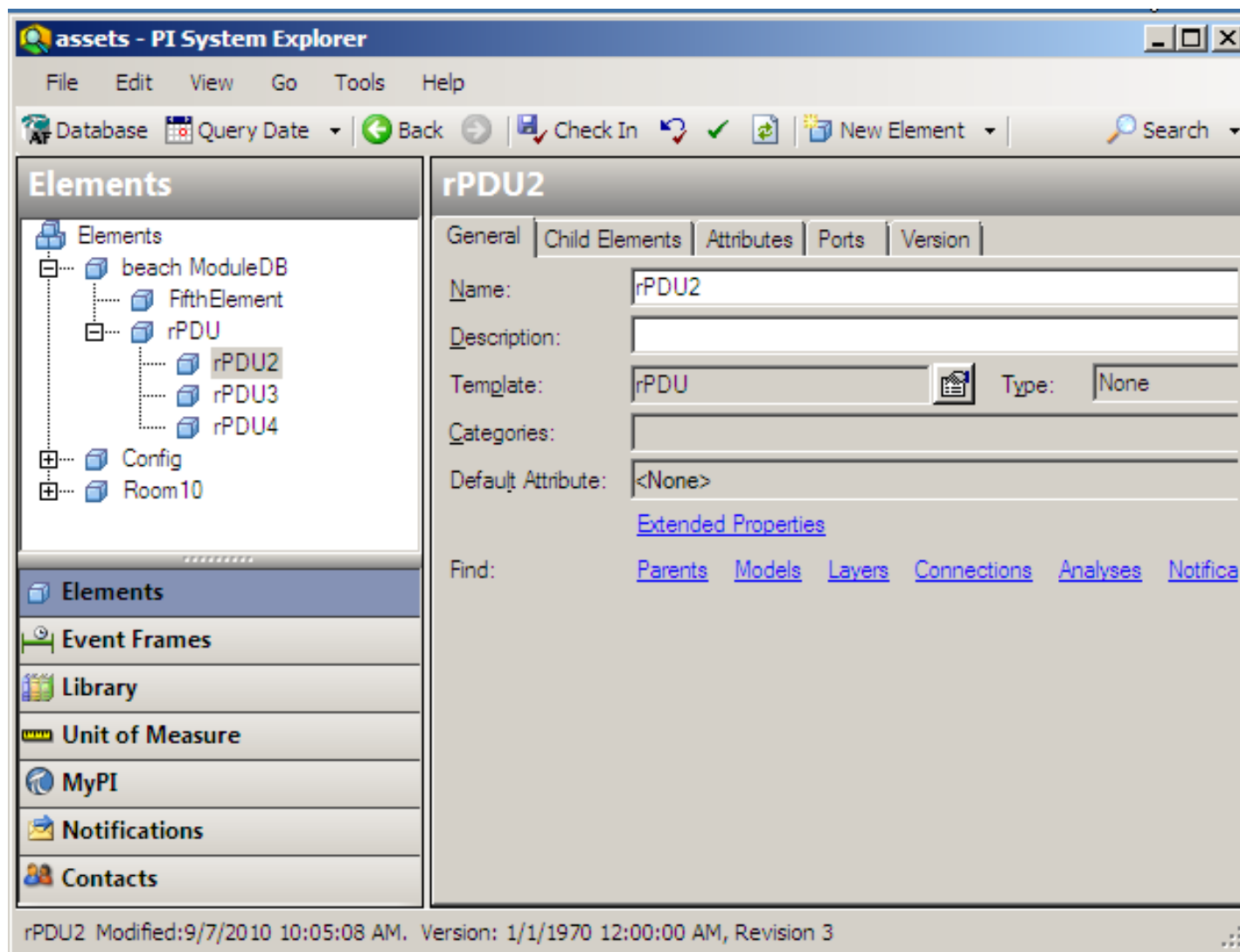
Data Reference: PI Point

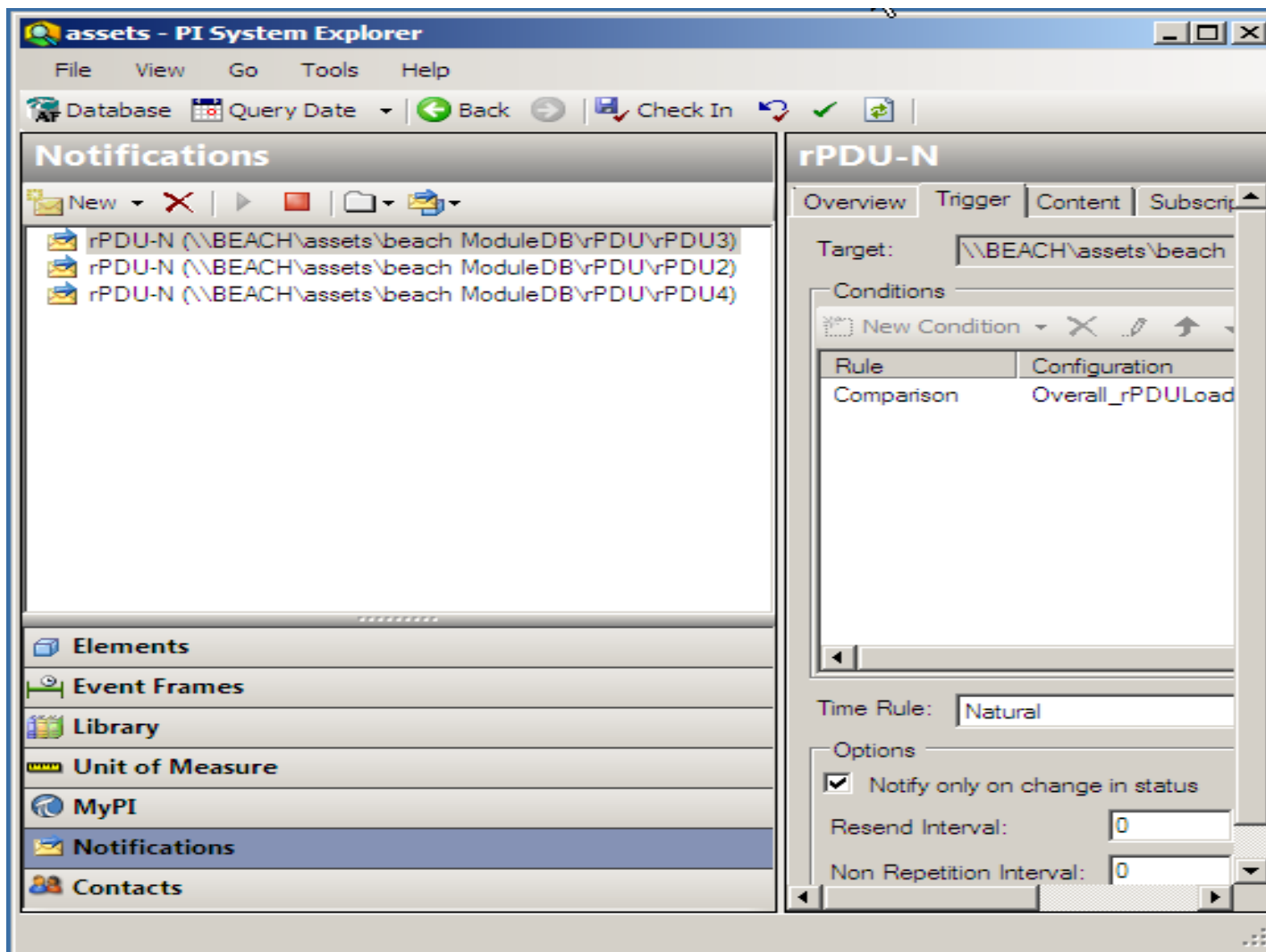
Settings...

\\\\Server%\\%\\Config\\PointPrefix%\_%Attribute  
%;ptclassname=classic;pointtype=Float32;compdev=2;compdevpercent=2;compmax=28800;compmin=0;compressing=1;converters=10;descriptor=rPDU Load in  
Amps;displaydigits=0;engunits=Amp;excdev=0;excdevpercent=0;excmax=0;excmin=0;exdesc="V=1;OID=.1.3.6.1.4.1.318.1.1.12.2.3.1.1.2.2;"filtercode=0;instrumenttag="host=@\\Config\\IP Address%";location1=%@\\Config\\rPDU\\PILocation1%;location2=0;location3=0;location4=%@\\Config\\rPDU\\PIScanClass%;location5=0;pointsource=%@\\Config\\rPDU\\PIPoint Source  
%;scan=1;shutdown=1;span=100;squareroot=0;step=0;totalco

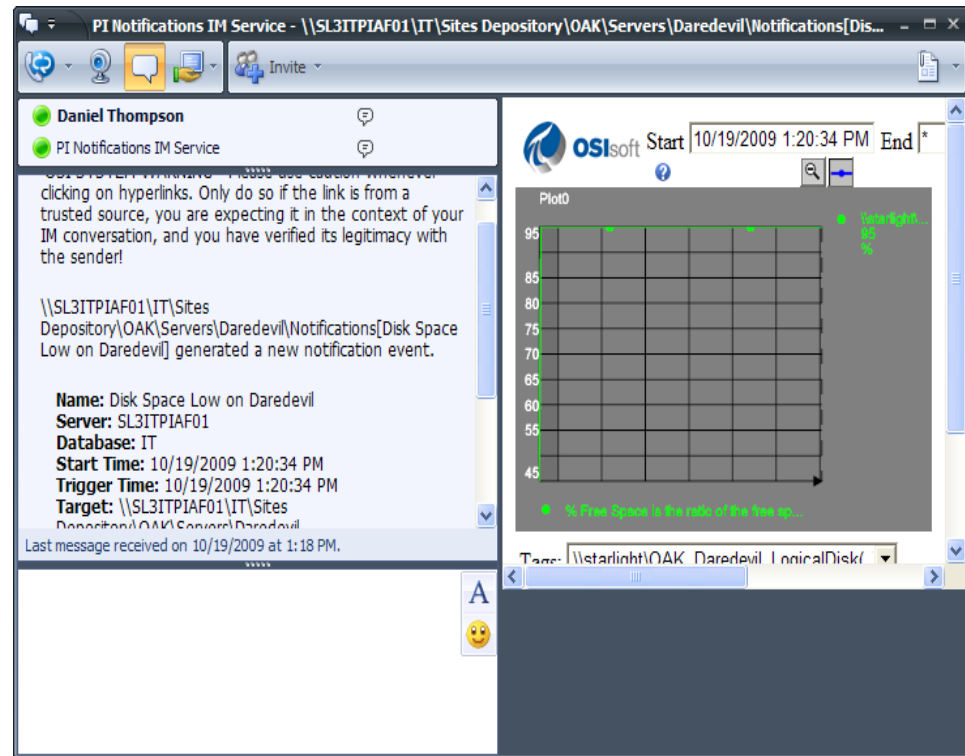
# Create Notification Template - Step 2







- How a message is delivered
- Supported Delivery Channels:
  - Email
  - Web service
  - Microsoft Office Communicator
- Extensible - write your own!
  - Helper classes available
- OSIsoft vCampus example
  - XML delivery channel

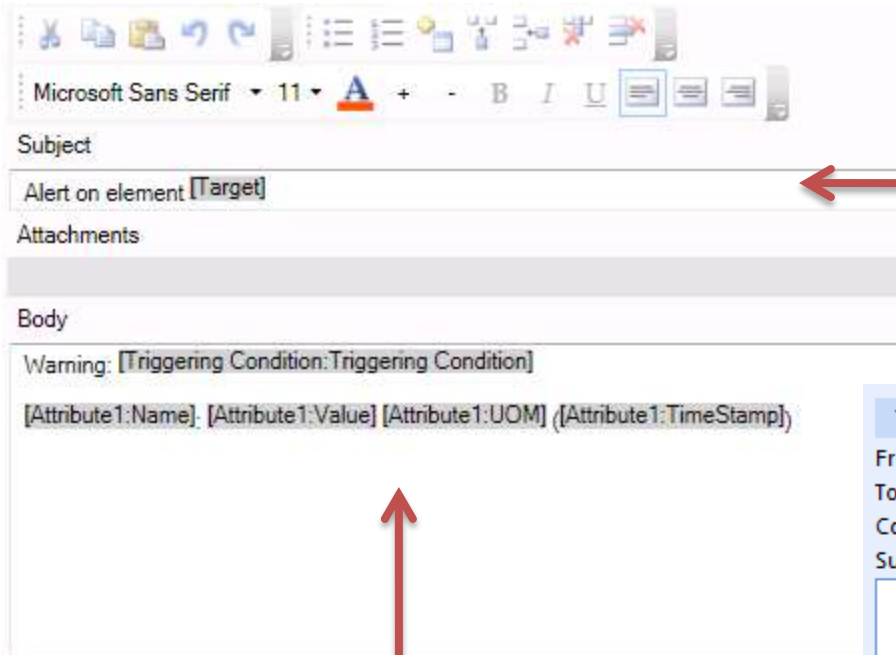


- Data center user required being notified for a circuit exception
  - Notifications based on Notification templates
- Requirement to send data from PI to NY ISO at regular intervals
  - Customer created custom delivery channel to work with Notifications



- **Message Formatting**
  - More control over the appearance of the subject and body
- **Performance**
  - History retrieval is improved by an order of magnitude
  - Native 64-bit operating system support
- **Internationalization**





Microsoft Sans Serif 11

Subject

Alert on element [Target]

Attachments

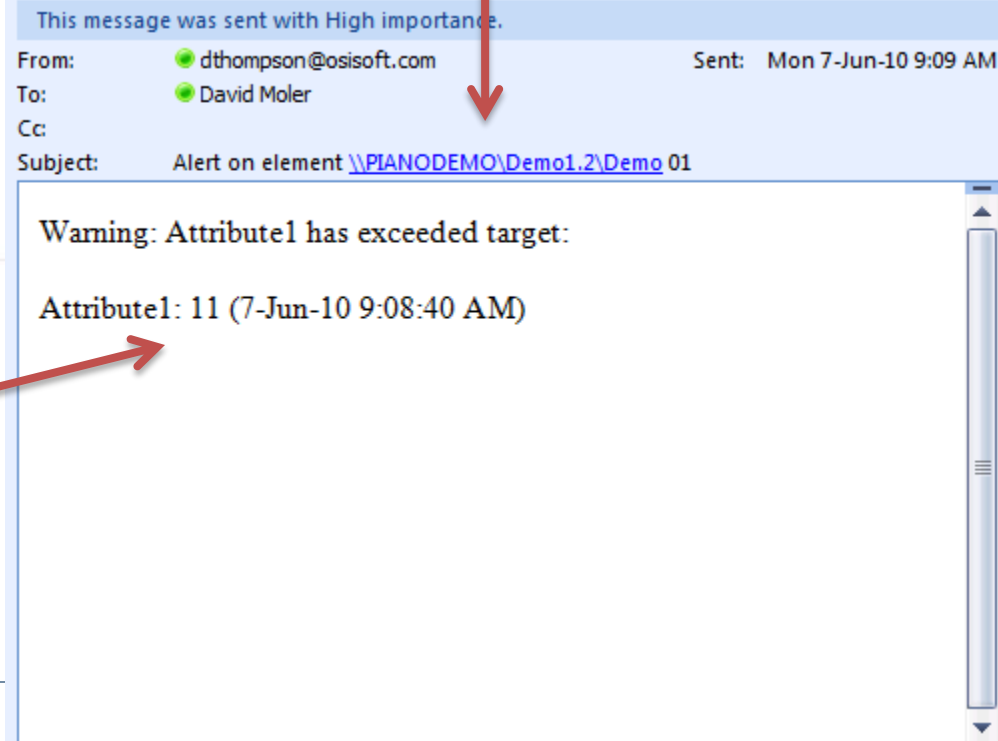
Body

Warning: [Triggering Condition:Triggering Condition]

[Attribute1:Name]: [Attribute1:Value] [Attribute1:UOM] ([Attribute1:TimeStamp])

Free-form composition of  
subject and body

Content is substituted  
when alert is triggered



This message was sent with High importance.

From: dthompson@osisoft.com Sent: Mon 7-Jun-10 9:09 AM

To: David Moler

Cc:

Subject: Alert on element \\\PIANODEMO\Demo1.2\Demo 01

Warning: Attribute1 has exceeded target:

Attribute1: 11 (7-Jun-10 9:08:40 AM)

## Regional Seminar Series



Product Roadmap

Glenn Moffett

September 2010

## 2009 Themes: What did OSIsoft accomplish in 2009 to help you?



### Security

- ✓PI 380
- ✓Deployment



### Asset Centric PI System

- ✓PI ProcessBook
- ✓PI WebParts
- ✓PI Notifications
- ✓PI AF HA



### Localization

- ✓8 languages
- ✓5 products
- ✓3 planned



### Scaling, 64-bit

- ✓ Servers
- ✓ Data Access
- ✓ Web Clients

- Interfaces - 78 releases
- Servers
  - PI Server 3.4.380
  - PI SMT 3.3.1.3
  - PI AF 2.1
  - PI Notifications 1.1
  - PI Notifications OCS Delivery Channel
  - MCN Health Monitor 1.3.5.2
- Data Access
  - PI SDK - 64-bit 1.3.8.385
  - PI JDBC 1.0.0
  - PI Data Services 3.0.0
  - PI System OLEDB 1.0.0.11
- Clients
  - PI ProcessBook 3.2.0
  - PI Active View 3.2.0
  - PI Web Parts 3.0.0
  - PI DataLink 4.0.3
  - PI DataLink for Excel Service 4.0.3
  - PI Data Link for Excel Services 4.1.1.0
  - RtReports 3.3.0.0
  - PI Manual Logger 2.3.0.160
- Additionally
  - 31 Minor Releases
  - 7 Language Packs

- **Scalability/Manageability/Performance**
  - PI Server
  - PI Notifications
  - PI AF
- **User Experience**
  - PI System Search
- **Analytics**
  - PI ACE Performance
  - AF Analytics
  - Edge Processing

# PI System Clients



Find

Search the system  
to find information



Analyze

Dig, diagnose and  
conclude



Build and Share

Simply build and  
share results



# Thank you

© Copyright 2010 OSIsoft, LLC.

777 Davis St., Suite 250 San Leandro, CA 94577