

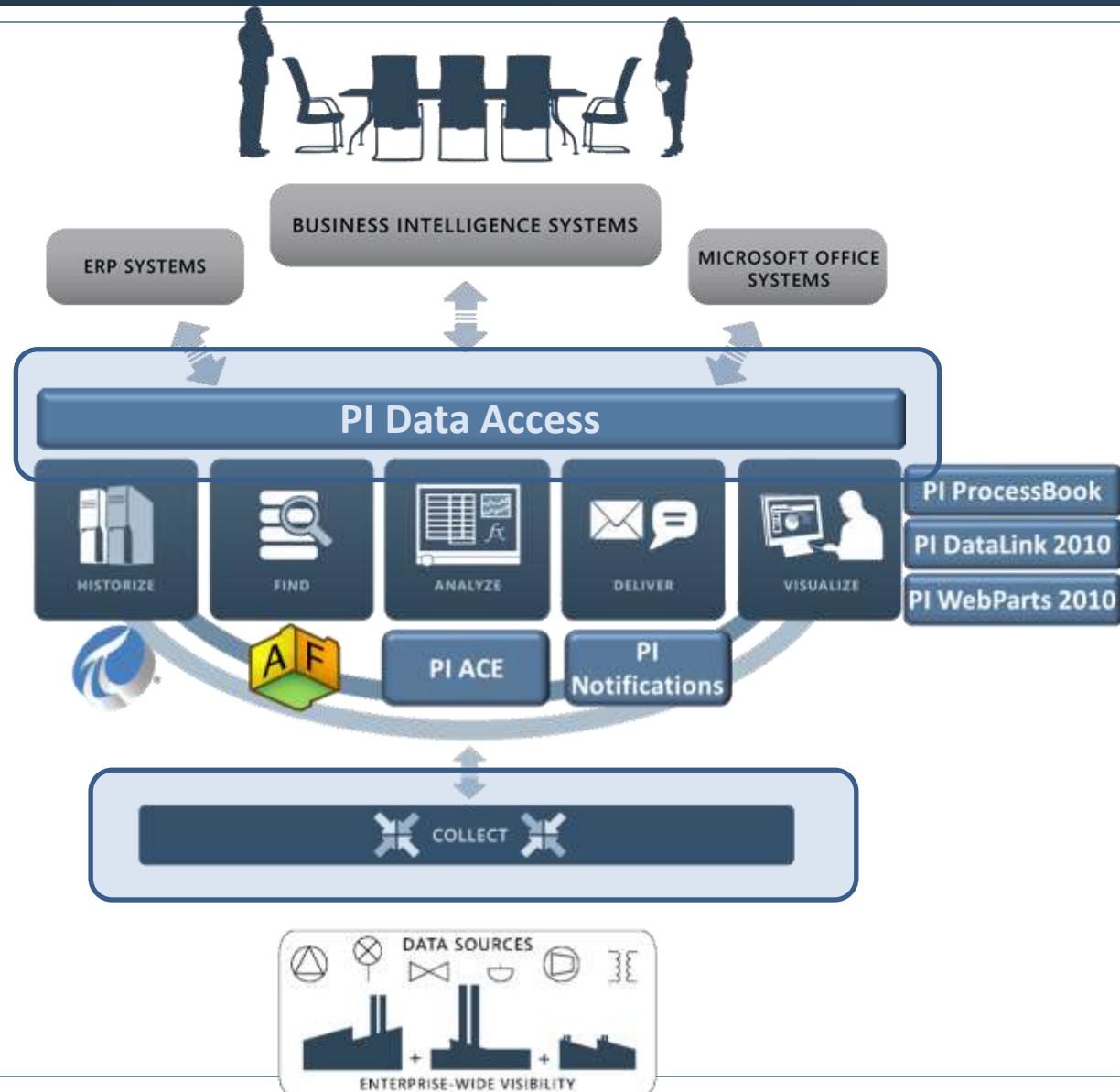
# Using PI Data Access and PI Interfaces to Expand the PI System Infrastructure

Jay Lakumb  
Product Manager

Empowering Business in Real-time.

© Copyright 2010, OSIsoft LLC. All rights Reserved.

# The PI System



# What are Interfaces?





Over **400 PI Interfaces**, to collect data from:

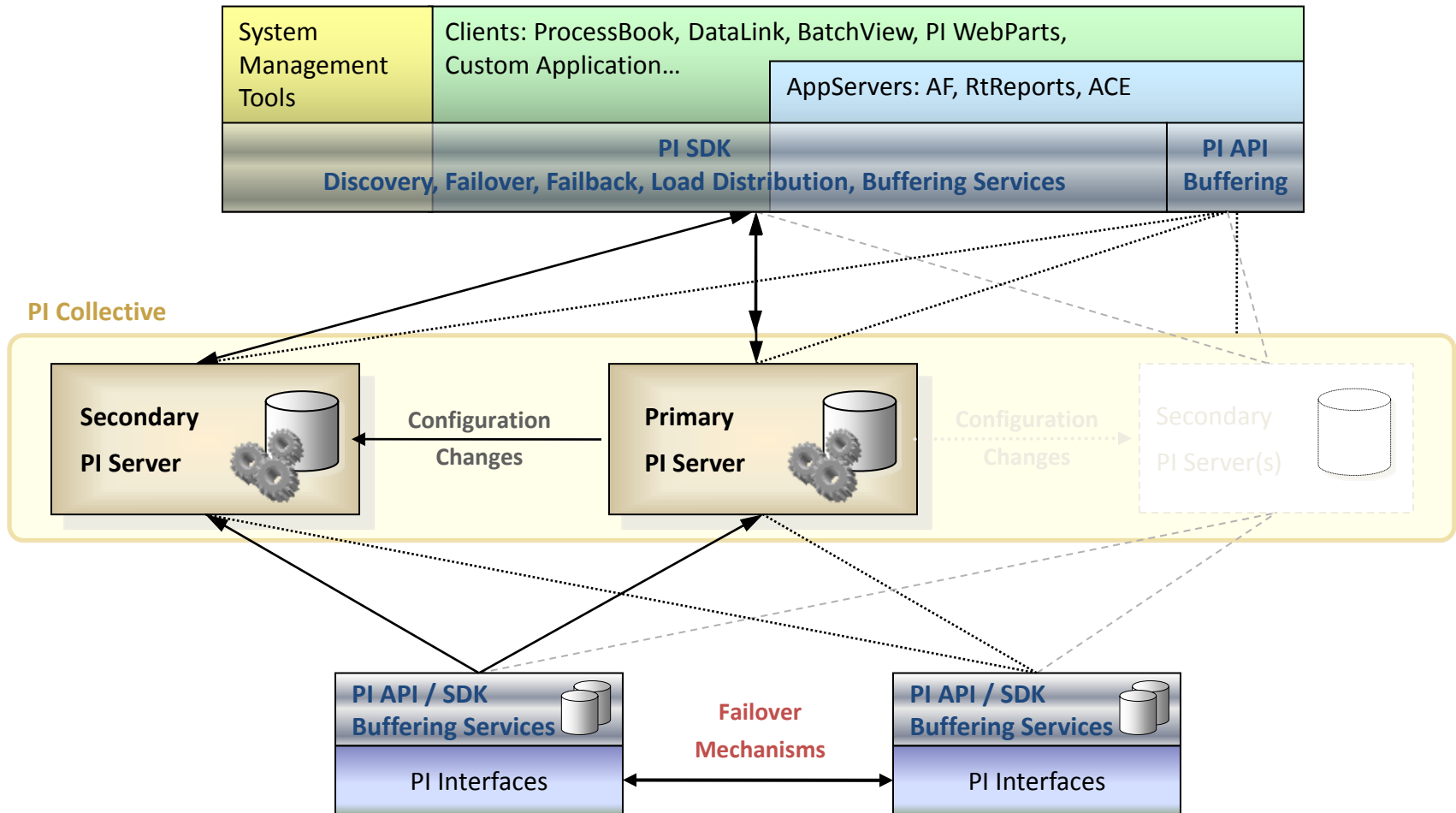
- Devices
- Systems
- Standards
- Manually entered data
- IT assets
- Databases
- Internet

- 25 developers and QA engineers
  - Czech Republic, Johnson City TN, New Zealand, Philadelphia, Phoenix, San Leandro, Savannah
- >425 years of development experience
- >225 years of PI System experience
- >400 PI Interfaces



- Collect real-time data
- Can startup disconnected from the PI Server
- Buffer data while disconnected
- Redundancy and failover
- Monitor the health of interfaces
- Consistent configuration and message logging

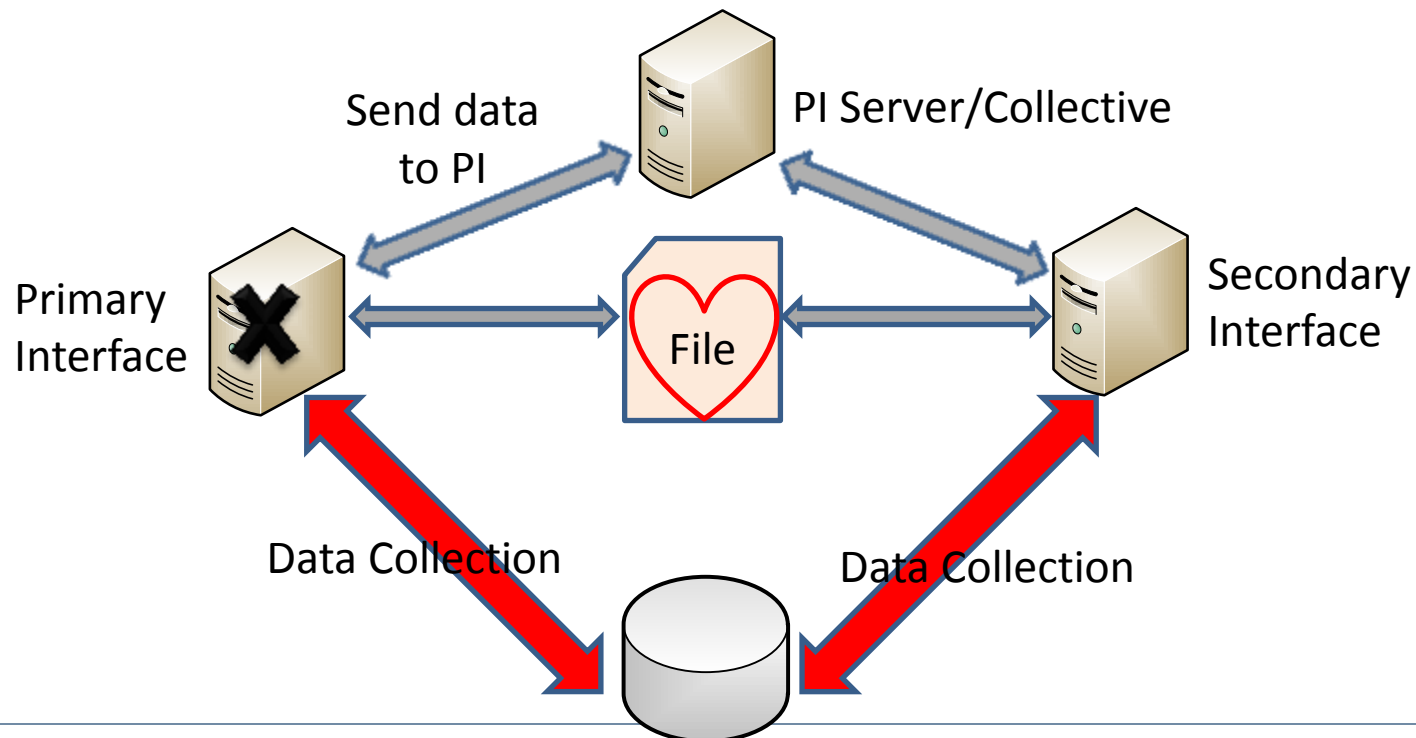
# Architecture of a High Availability PI System





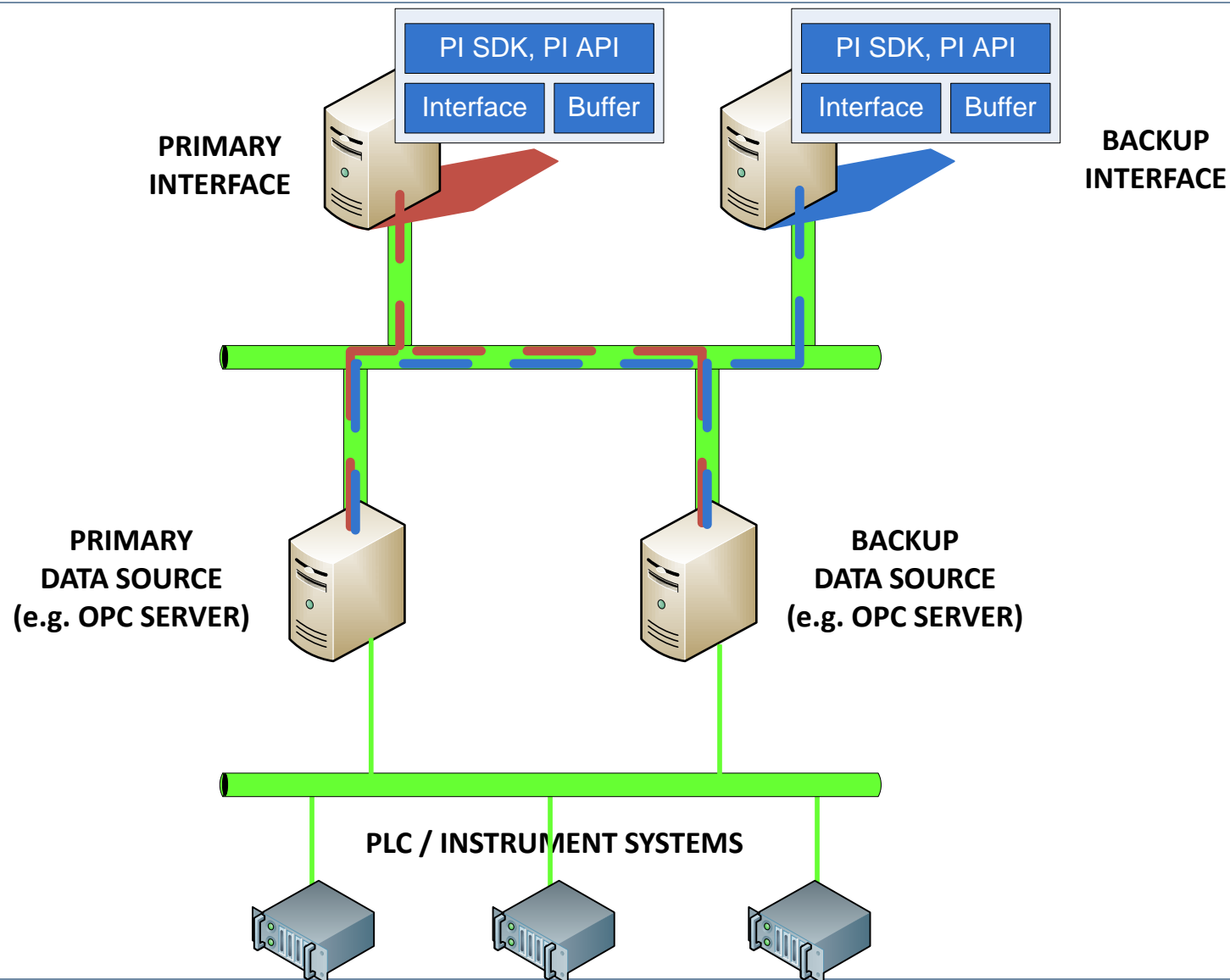
# PI Interface Failover

- Two interfaces collect the same data from the data source or mirrored data sources
- Interfaces send a “heartbeat” to each other through a shared file and through the primary PI Server
- Primary node sends data to PI, while Secondary node is just collecting
- If Primary fails the other will recognize, wake up and start sending data to PI





# Server Level Failover



- Silver Spring Networks UtilityIQ Interface (new, for AMI)
- Modbus Ethernet and Serial Interfaces (rewrite)
- Universal File Loader - replacement for Batch File Interface
- BACnet Interface - improvements to BACnet Query Tool
- Siemens SIMATIC Batch Interface (new)
- GE iBatch Batch Interface (new)
- Honeywell TotalPlant Batch Interface (new)
- PI OPC DA Interface Plug-In - REpower (new)

- Exchange of asset information with PI Asset Framework
- Higher scalability and performance
- Simplify management, installation, and configuration



## PI Data Access

- Enables development of custom PI applications, as well as integration with enterprise systems

## PI Notifications

- Deliver exceptions to people or push data to other systems

# PI Data Access: The Products



SQL Family

Web Services

OPC Servers

OSIsoft SDKs



Asset Information / Metadata

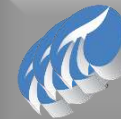
Notifications

Analytics

Relational / Non Time Series Data



PI Server



PI Server Collective

Time Series Data

- Set of drivers that expose PI System data in a relational database view
  - OLE DB, JDBC, ODBC
- Custom applications or integration scenarios



**ORACLE**



**Custom SQL  
Applications**



- Create reports and analysis cubes  
(SQL Server Reporting/Analysis Services)
- Perform Business Intelligence (BI)  
(Microsoft PowerPivot, IBM Cognos, SAS, SAP BO)
- Integrate PI System data in a  
Line-of-Business (LoB) System  
(LIMS, SAP PM)
- Visualize PI System data on the Web  
(Microsoft SharePoint, Apache Tomcat)

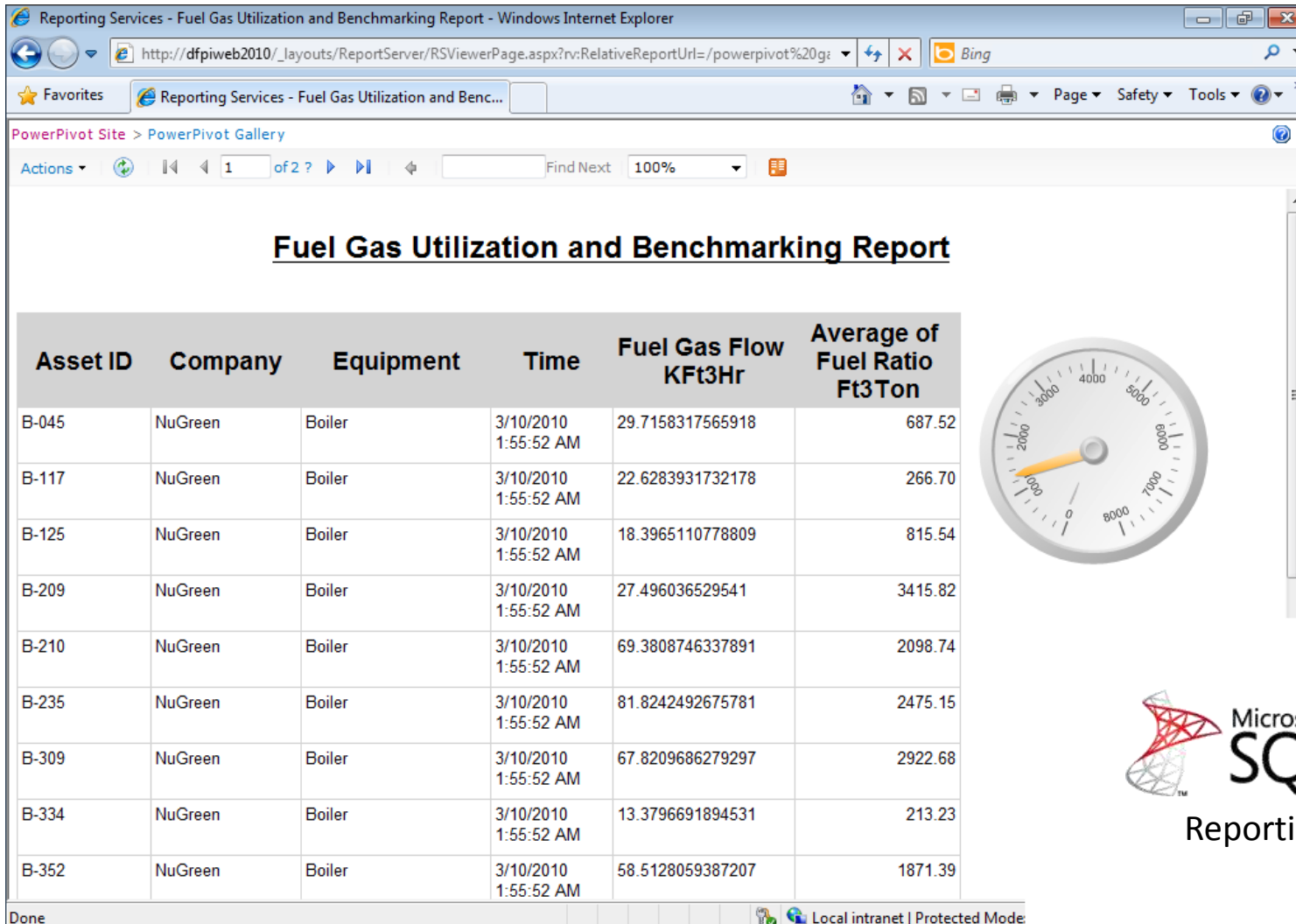




- **PI OLEDB Enterprise 2010**  
**in SQL Server Reporting Services**



# SQL Server Reporting Services



PowerPivot Gallery - Windows Internet Explorer

http://dfpiweb2010/PowerPivot%20Gallery/Forms/Gallery.aspx

PowerPivot Gallery

Site Actions Browse Documents Library Steve Pilon

PowerPivot Site PowerPivot Gallery

Share a document with the team by adding it to this document library.

PowerPivot Site Search this site...

Libraries

- Site Pages
- Shared Documents
- PowerPivot Gallery
- Multidimensional Data and PI
- Nalco Displays

Lists

- Calendar
- Tasks

Discussions

- Team Discussion

Sites

- People and Groups

Recycle Bin

All Site Content

**Nalco Fuel Gas Use Report**

Last Modified By: Tom Lebay, Date: 4/8/2010  
Created By: Tom Lebay

**Fuel Gas Utilization and Benchmarking R**

Last Modified By: System Account, Date: 4/16/2010  
Created By: Curt Hertler

Local intranet | Protected Mode: Off

9:46 PM  
4/19/2010

- PI OLEDB Enterprise 2010  
in PI WebParts 2010



PI Data Sources - Windows Internet Explorer

http://transdistco/pi%20data%20services/admin/pi\_datasourceedit.aspx

PI Data Sources

**OSIsoft** PI Data Services  
**PI Data Sources**

**Data Sources**  
 ◆PI  
 ◆Relational  
 ◆Web Service

**Datasets**  
 ◆PI Calculation  
 ◆Relational  
 ◆Web Service

**Version Information**  
 ◆PI Data Services

**PI WebParts**  
 Advanced Configuration  
 ◆PI WebParts  
 Administration

[Back To PI Data Services Administration](#)

Configure Connections to PI Servers.

**Configured PI Servers**

Server Name	Connection Timeout	Data Access Timeout
dfpi2010RC - Default	10	60
DFPIServer1		

☒ Default

[Test Connection](#) [Save](#)

\* Indicates PI Server Collective

[New](#) [Delete](#)

Local intranet | Protected Mode: Off

FR 12:38 PM 4/21/2010

- PI JDBC 2010  
in a **Linux/Apache** environment




PI JDBC Demo 1 - Windows Internet Explorer

http://localhost:8080/examples/PIJDBC\_Demo/page1.jsp

★ Favorites   ★ Suggested Sites   Web Slice Gallery

Apache Tomcat   PI JDBC Demo 1

Powered by  TOMCAT

# Tomcat running PI JDBC

State = Execute

Disconnect from ASNOTE2

```
SELECT tag, time, value FROM PIARCHIVE..PISNAPSHOT WHERE TAG
LIKE 'CDT%'
```

Execute

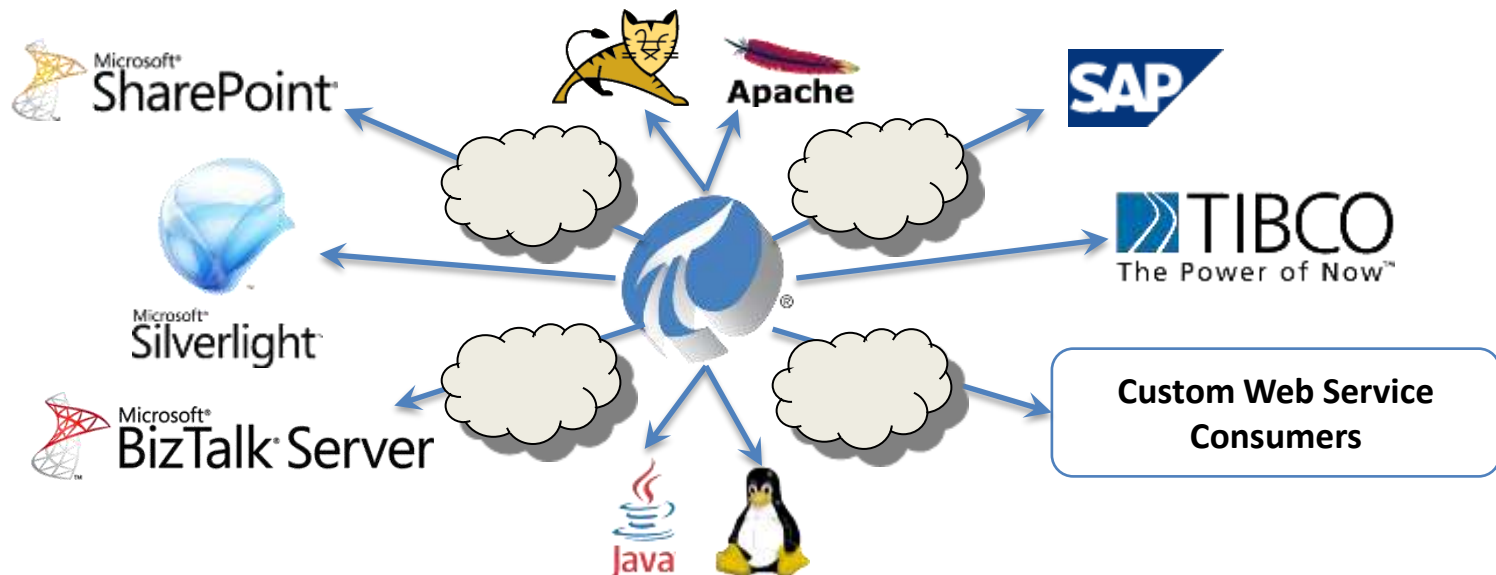
tag	time	value
CDT158	Mon Apr 26 19:06:22 CEST 2010	140.46431
CDT158_MA	Mon Apr 26 19:06:22 CEST 2010	23.939032
CDT158_MAA	Mon Apr 26 19:06:22 CEST 2010	168.67267
CDT158_MAB	Mon Apr 26 19:06:22 CEST 2010	246.52464
CDT158_MAC	Mon Apr 26 19:06:22 CEST 2010	271.41763
CDT158_MB	Mon Apr 26 19:06:22 CEST 2010	66.94309
CDT158_MC	Mon Apr 26 19:06:22 CEST 2010	120.9448



- Provides access to the **PI Data** and **PI AF Data** through standard **web service** technologies
  - Many code-free integration scenarios
  - Any application, any language, any OS
- Facilitates data access over **secure** and **distributed** environments
  - Nothing required on the client machine
  - Lightweight and firewall-friendly



- Web-based visualization
- Integration scenarios
  - Line-of-Business (LoB) systems
  - Enterprise service bus
- Non-Windows environments



- PI Web Services 2010  
in Microsoft InfoPath Form Services



# PI Web Services in InfoPath



NuGreen - Notification Limit Change - Windows Internet Explorer

http://dfpiweb2010/NuGreen/SitePages/Notification%20Limit%20Change.aspx

Navigation: Home, RSS, Email, Print, Page, Safety, Tools

Steve Pilon

Forms

Site Actions: Submit, Save, Save As, Close, Paste, Copy, Cut, Print Preview, Update

Commit, Clipboard, Views, Update

- Home
- Engineering
- Manufacturing
- Help

Libraries

- Notification Limit Change
- Notification Limit Change Form

News

Offices

Departments

Search

Help

Manufacturing

- Houston Plant
- Little Rock Plant
- Tucson Plant
- Wichita Plant

## Notification Limit Change

Use this form to change notification limit values.

Please enter the effective date for changes:

**Target Date:** 4/15/2010 8:49:09 AM

Please select the appropriate plant:

**Heater:**

- Heater 395: FG Limit
- Heater 393: FG Limit
- Heater 148: FG Limit

Please enter a new value Notification trigger limit:

**Trigger Limit:** 15

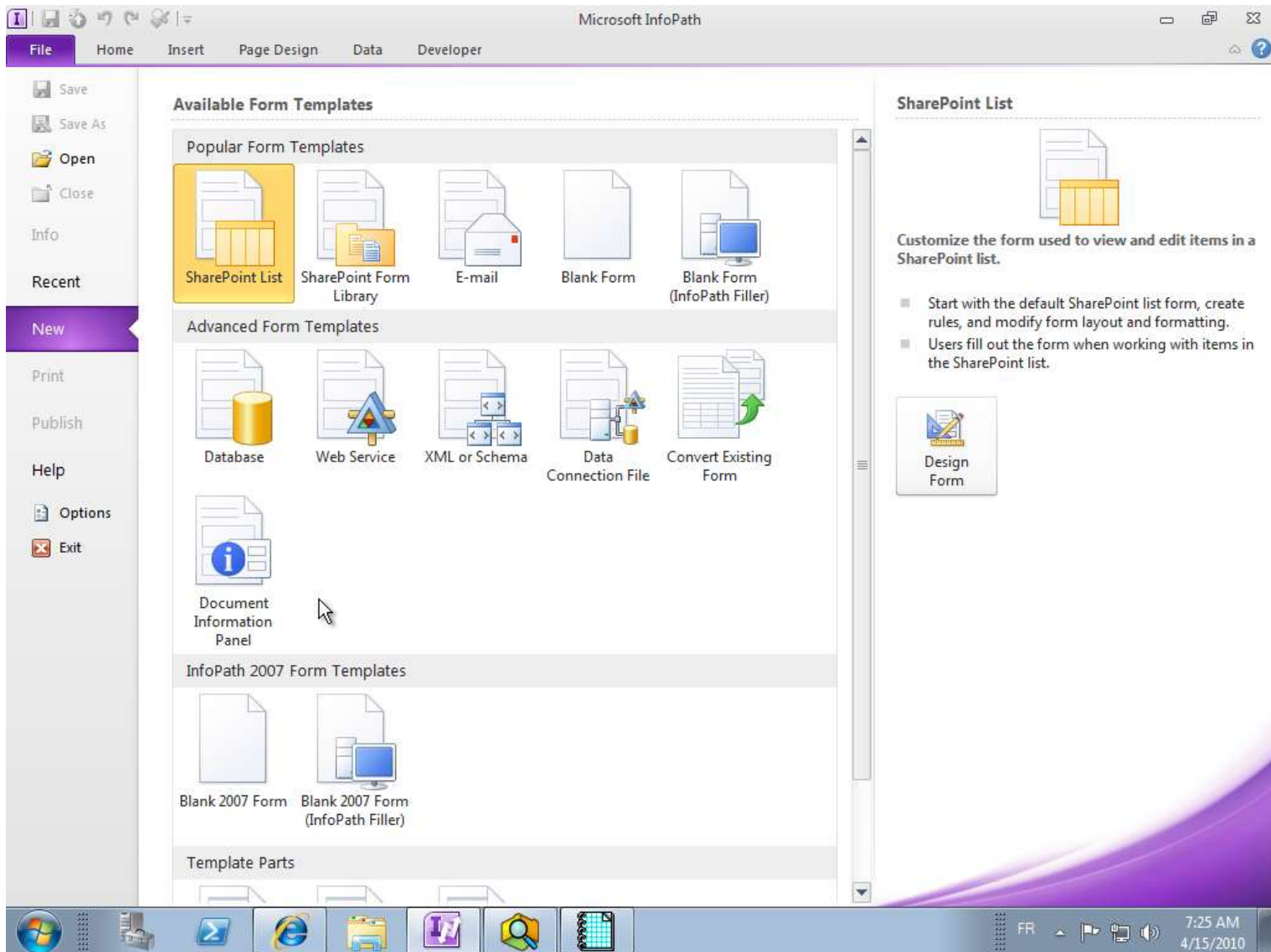
Please add any comments to support the change:

**Comments:**

Change setpoint

Local intranet | Protected Mode: Off

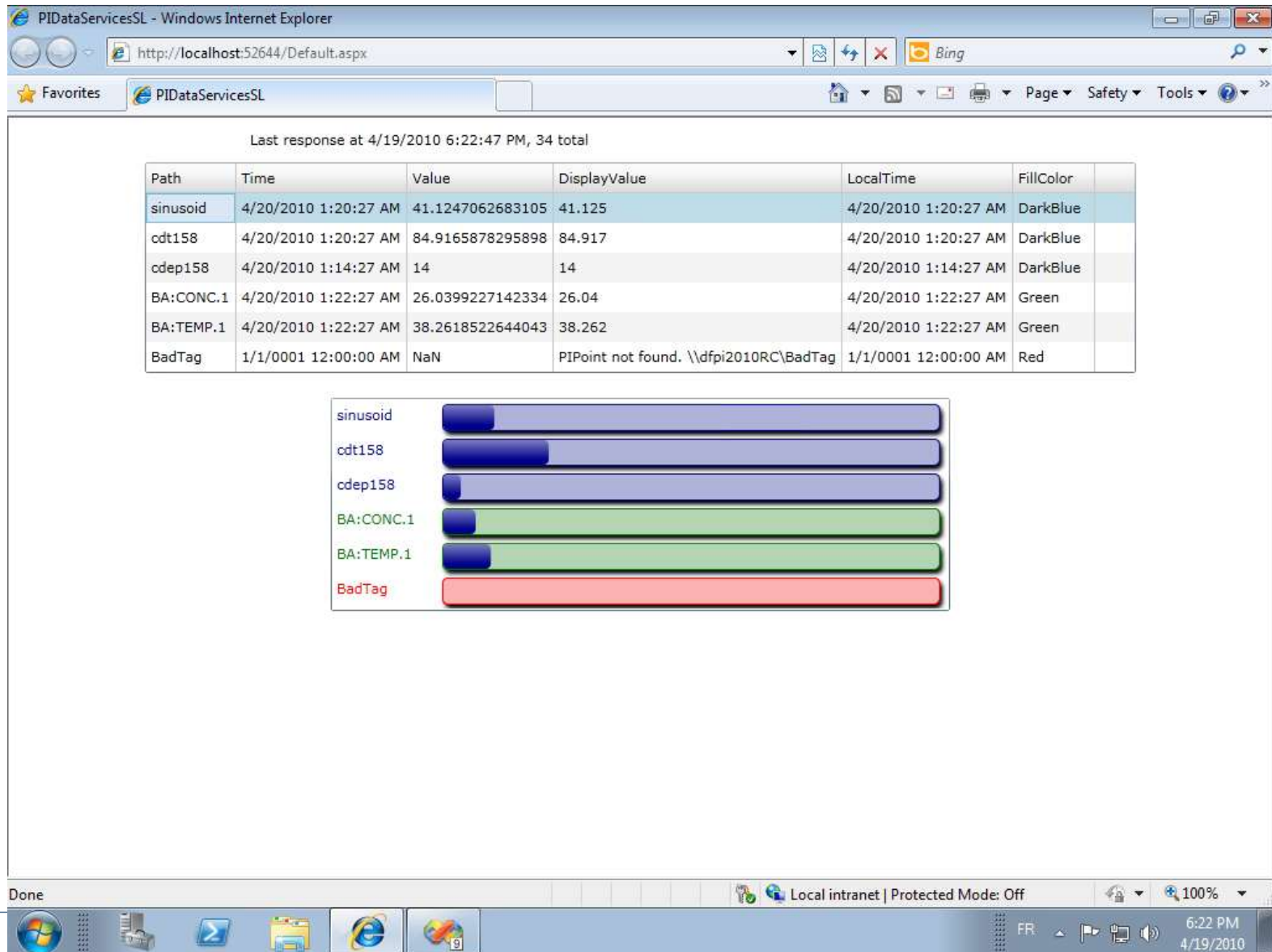
100%



- PI Web Services 2010  
in Microsoft **Silverlight**  
(web browser)



# PI Web Services in Silverlight

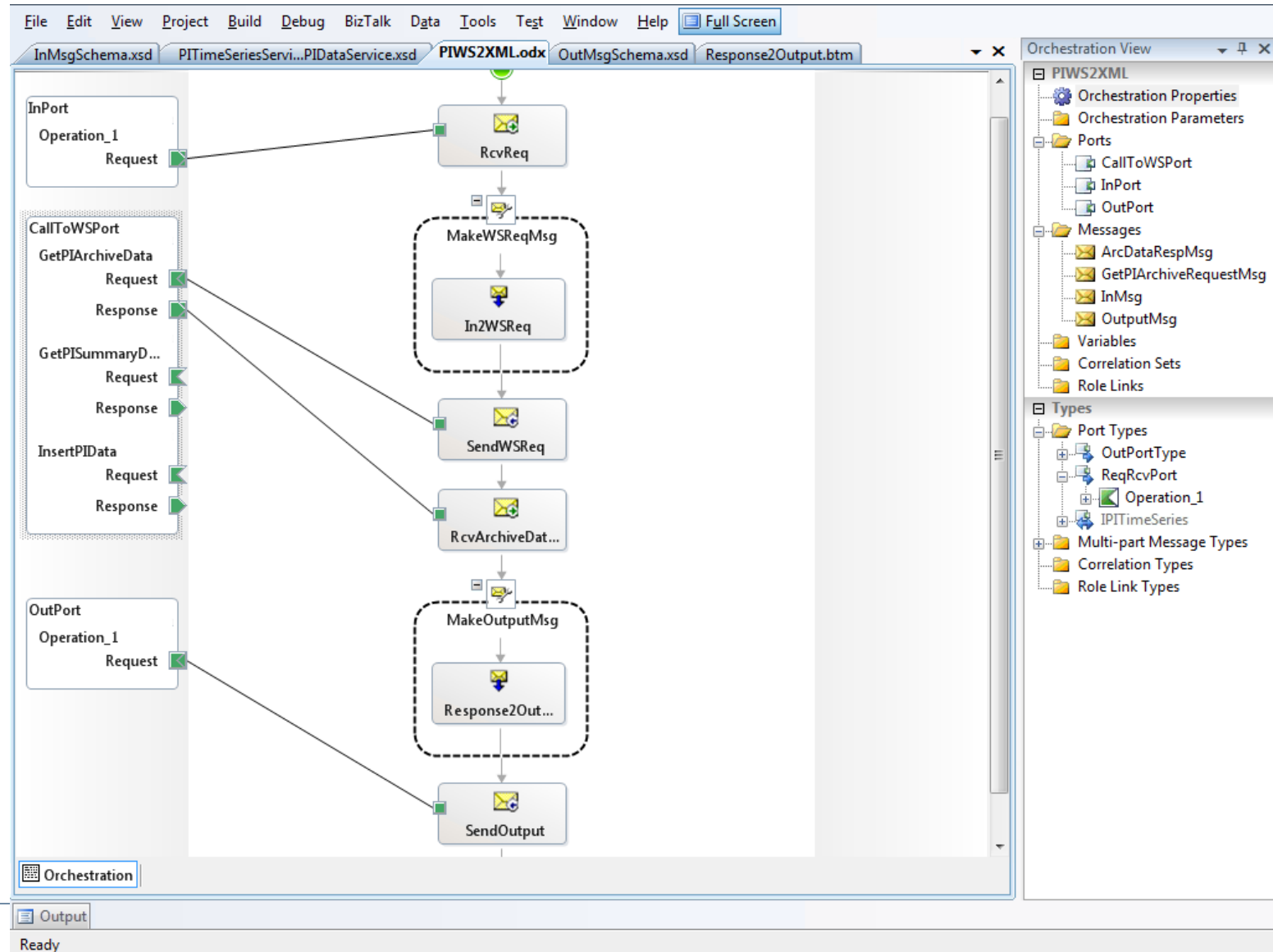


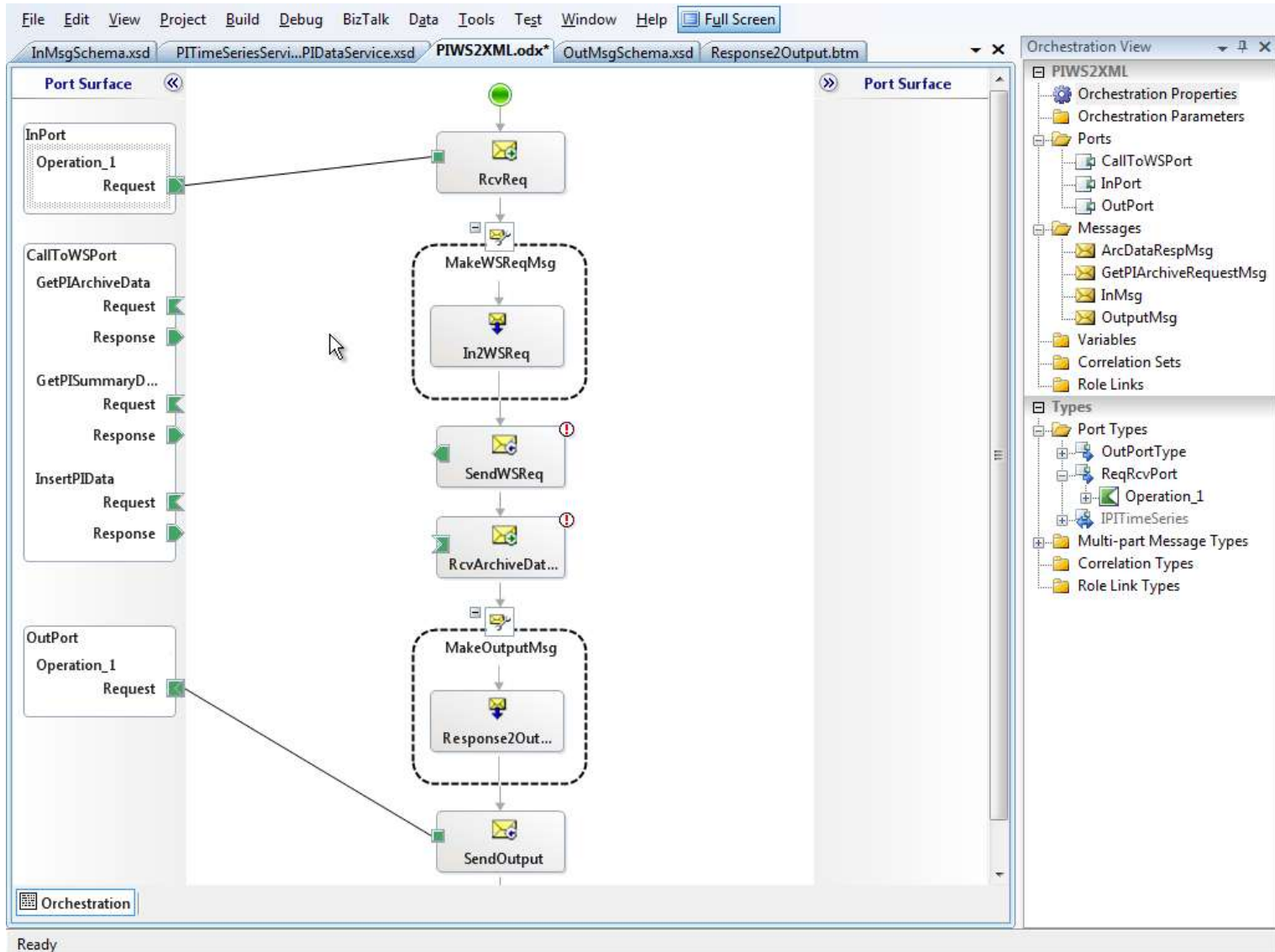


- PI Web Services 2010  
in Microsoft BizTalk



# PI Web Services in Microsoft BizTalk

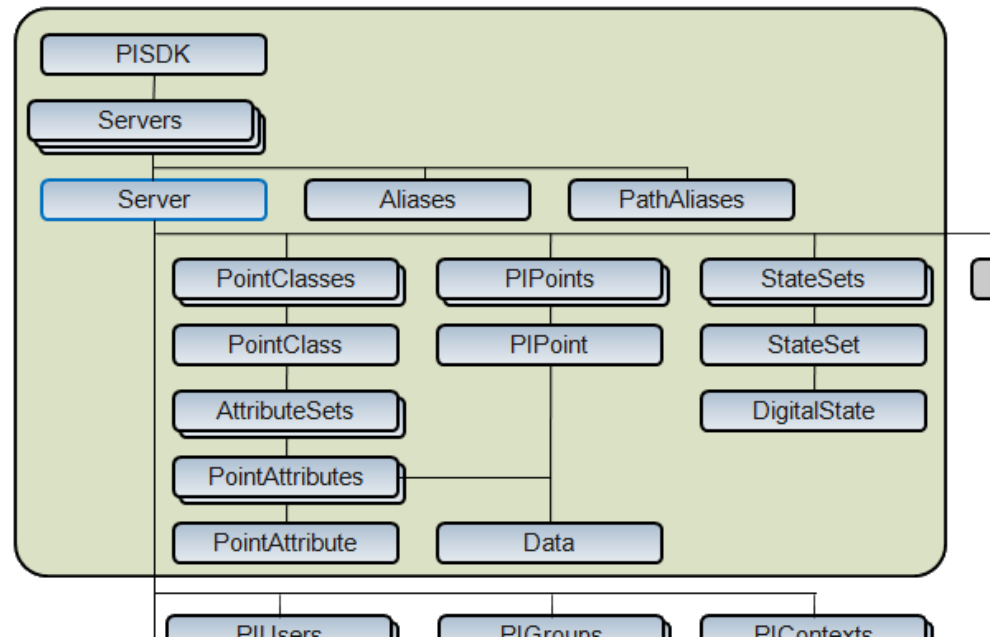




- PI OPC DA/HDA Server 2010
  - Certified for Compliance
- Currently investigating
  - PI OPC UA Server (CTP on OSIsoft vCampus)
- Talk to the PI System via well-known, popular standards
- Integrate with 100's of existing OPC Clients
  - Process optimization engines
  - Process analysis, calculations
  - Visualization/reporting




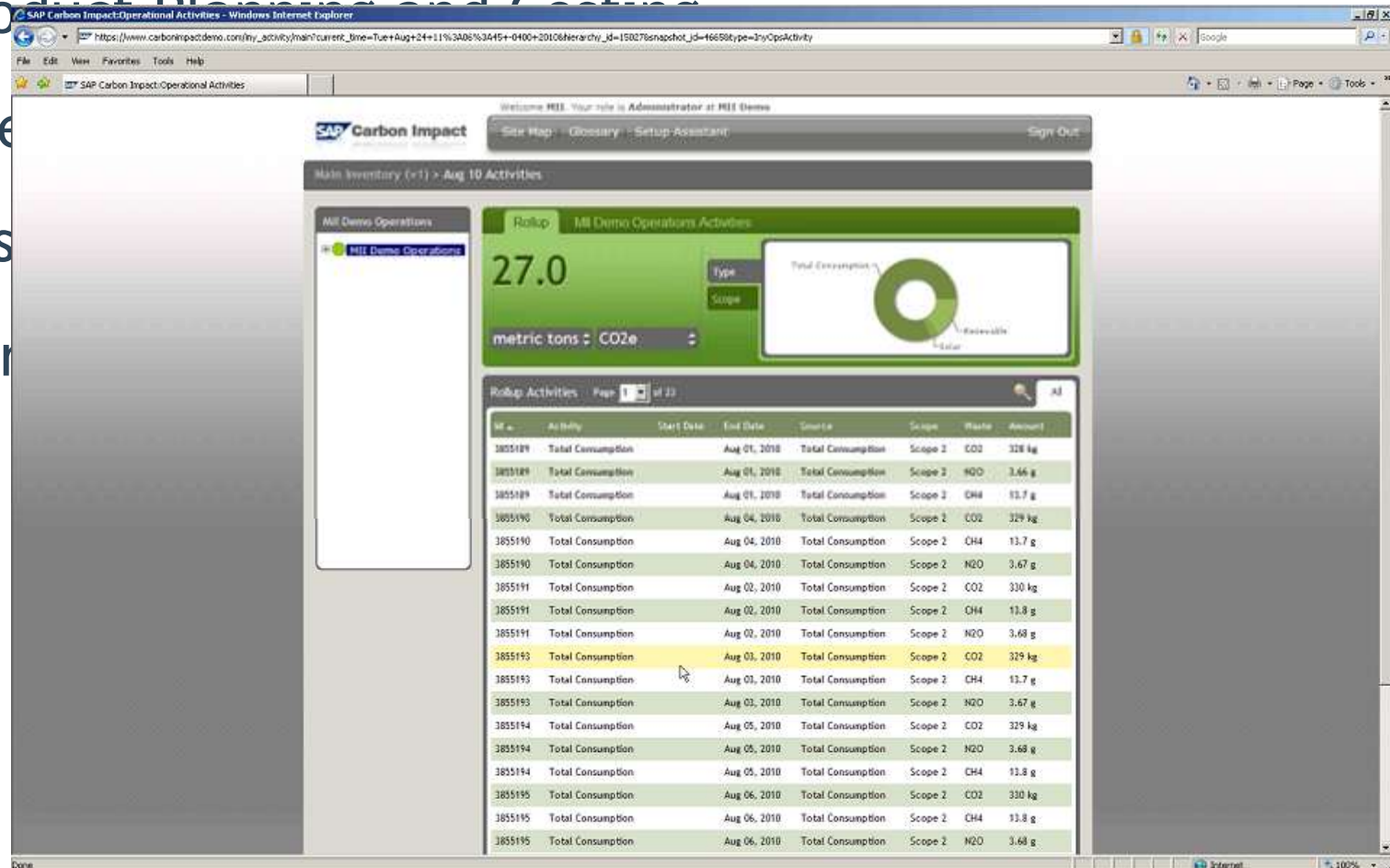
- Object-oriented SDKs
  - PI Server, PI AF, PI Notifications
- Custom applications
  - Visualization
  - Configuration
  - Calculations
  - Analyses
- Client-Side Buffering
  - PI SDK 2010 (CTP)



- PI Data Access  
in **SAP MII** using PCo



- Condition-Based Main 
- Product Planning and Costing
- Energy
- Assets
- Carbon





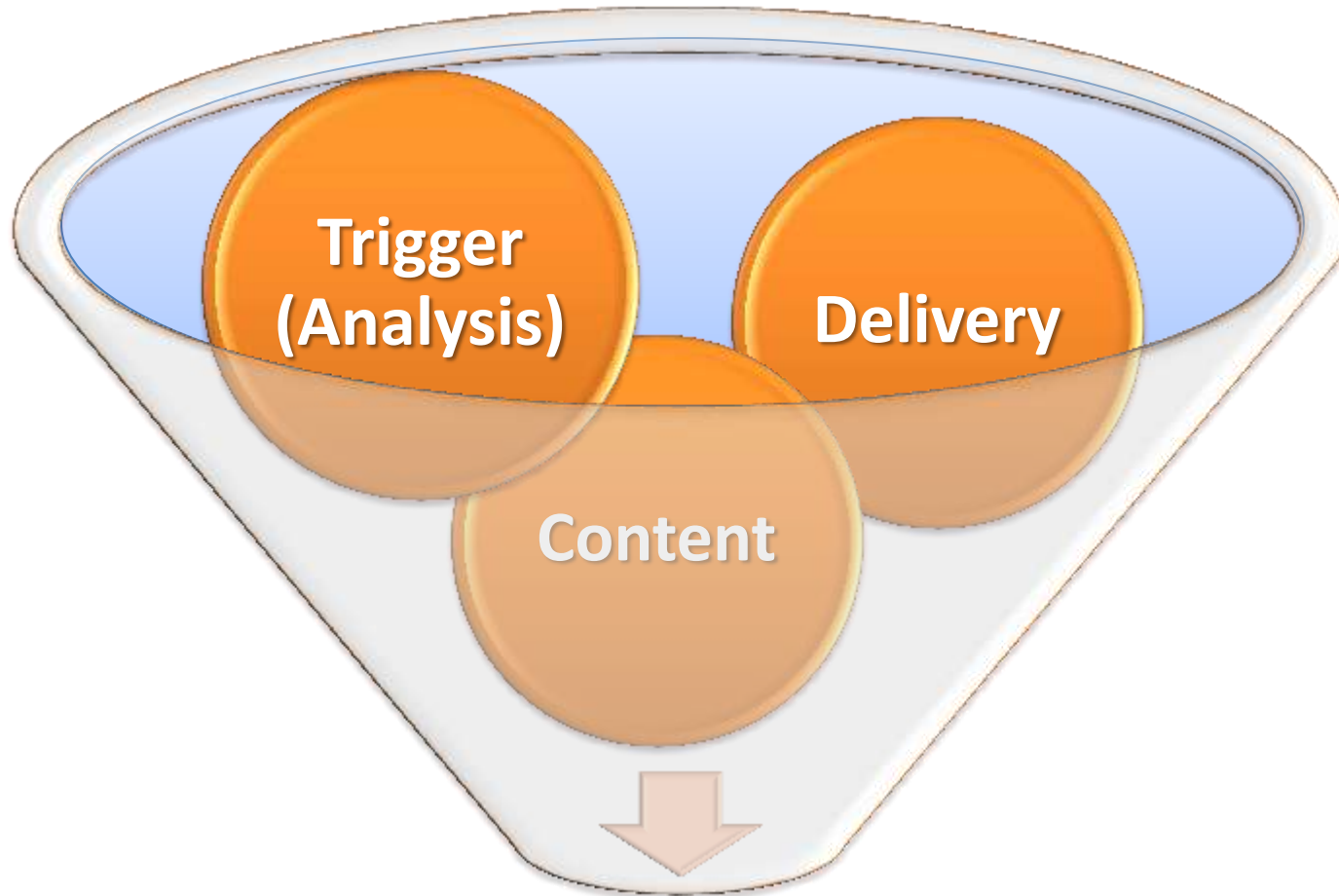


## PI Data Access

- Enables development of custom PI applications, as well as integration with enterprise systems

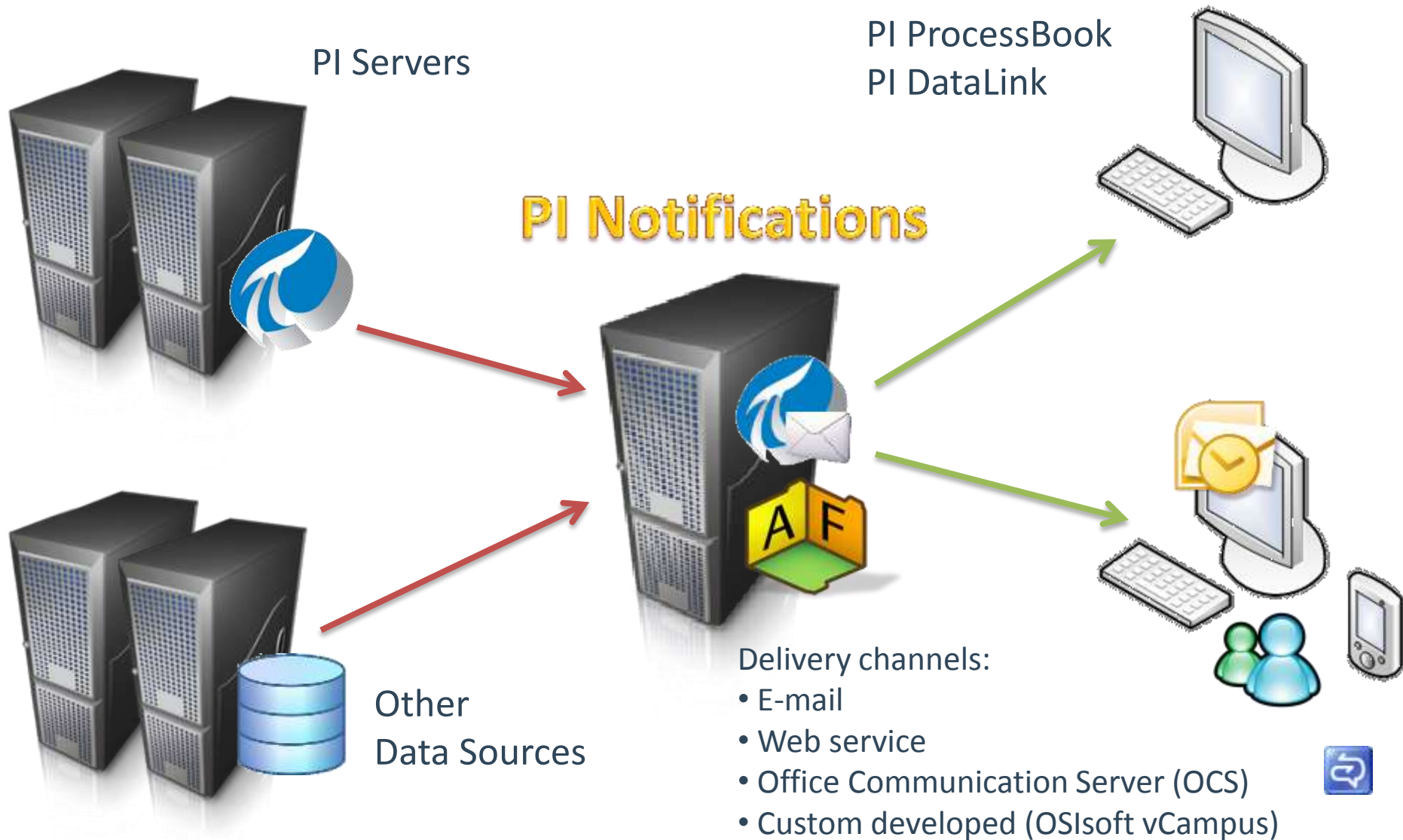
## PI Notifications

- Deliver exceptions to people or push data to other systems



## Notification

# PI Notifications Architecture



# PI Data Access: The Products



SQL Family

Web Services

OPC Servers

OSIsoft SDKs



Asset Information / Metadata

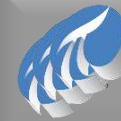
Notifications

Analytics

Relational / Non Time Series Data



PI Server



PI Server Collective

Time Series Data

- Maintenance
  - Usage-based maintenance (as opposed to calendar-based maintenance)
  - Condition-based maintenance
- Production
  - Real-time Inventory
- Implementation
  - Machine runhours (PI Totalizer Tag) is posted to CMMS
  - PI Alert posted to CMMS as a Work Request
  - Raw material consumption (PI Tag value) posted to SAP

# Push vs. Pull + Optional Middleware



- PI Data/Events
  - Push
  - Pull



- Middleware
  - Microsoft BizTalk
  - SAP MII (and PCo)
  - IBM WebSphere ESB
  - Oracle Fusion
  - TIBCO



- PI Notifications (with XML Delivery Channel)
- Push data from the PI System
- Transaction Objects in PI AF for mapping
- No middleware required
- [Live Demo](#)

# Bearing temperature high alert to Maximo Work Request



- Condition assessment using the PI System
- PI Web Services
- Middleware: Microsoft BizTalk
- [Live Demo](#)



# Development → Runtime

```
AFTimeRange tr = new AFTimeRange(new AFTIME(tex  
AFValues vals = _afDB.Elements["Pump123"].Attri
```

```
lstValues.Items.Clear();  
foreach(AFValue val in vals)  
{
```

```
    lstValues.Items.Add(val.Value.ToString() +  
}
```



**PI System Access  
(PSA)**



- Online, community-oriented program
  - Software + Resources + Collaboration
  - Focus on development and integration
  - Partners, customers and OSIsoft
  - Exclusive contents (CTPs, Betas, technical papers)
- Personal development PI System
  - Development licenses for PI Data Access products (for developers and integrators)
- <http://vCampus.osisoft.com>  
[vCampus@osisoft.com](mailto:vCampus@osisoft.com)



# Questions?



*“OSIsoft vCampus helps my mind run a thousand miles an hour with ideas, keep the material coming !!!”*

***Kenneth Rice, Las Vegas Valley Water District***





# Thank you

© Copyright 2010 OSIsoft, LLC.

777 Davis St., San Leandro, CA 94577