

What's New in PI System 2010

Empowering Business in Real Time.

© Copyright 2010, OSIsoft LLC. All rights Reserved.

Experience



COLLECT



HISTORIZE



FIND



ANALYZE



DELIVER



VISUALIZE

New in PI System 2010



PI Clients

- PI WebParts 2010
- PI DataLink 2010
- PI for Office 2010

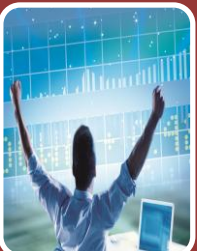
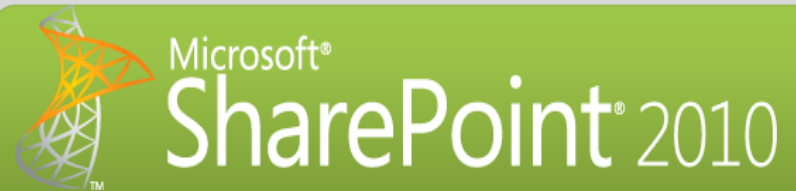
Business User Experience



PI Data Access

- PI OLEDB Enterprise 2010
- PI Web Services 2010
- PI JDBC 2010

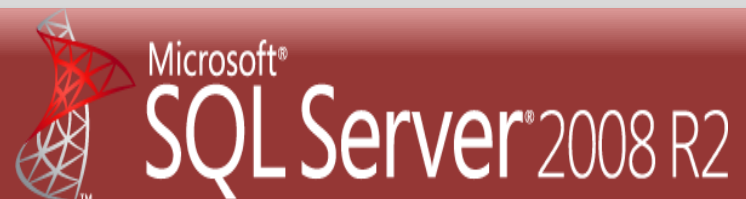
Business Collaboration Platform

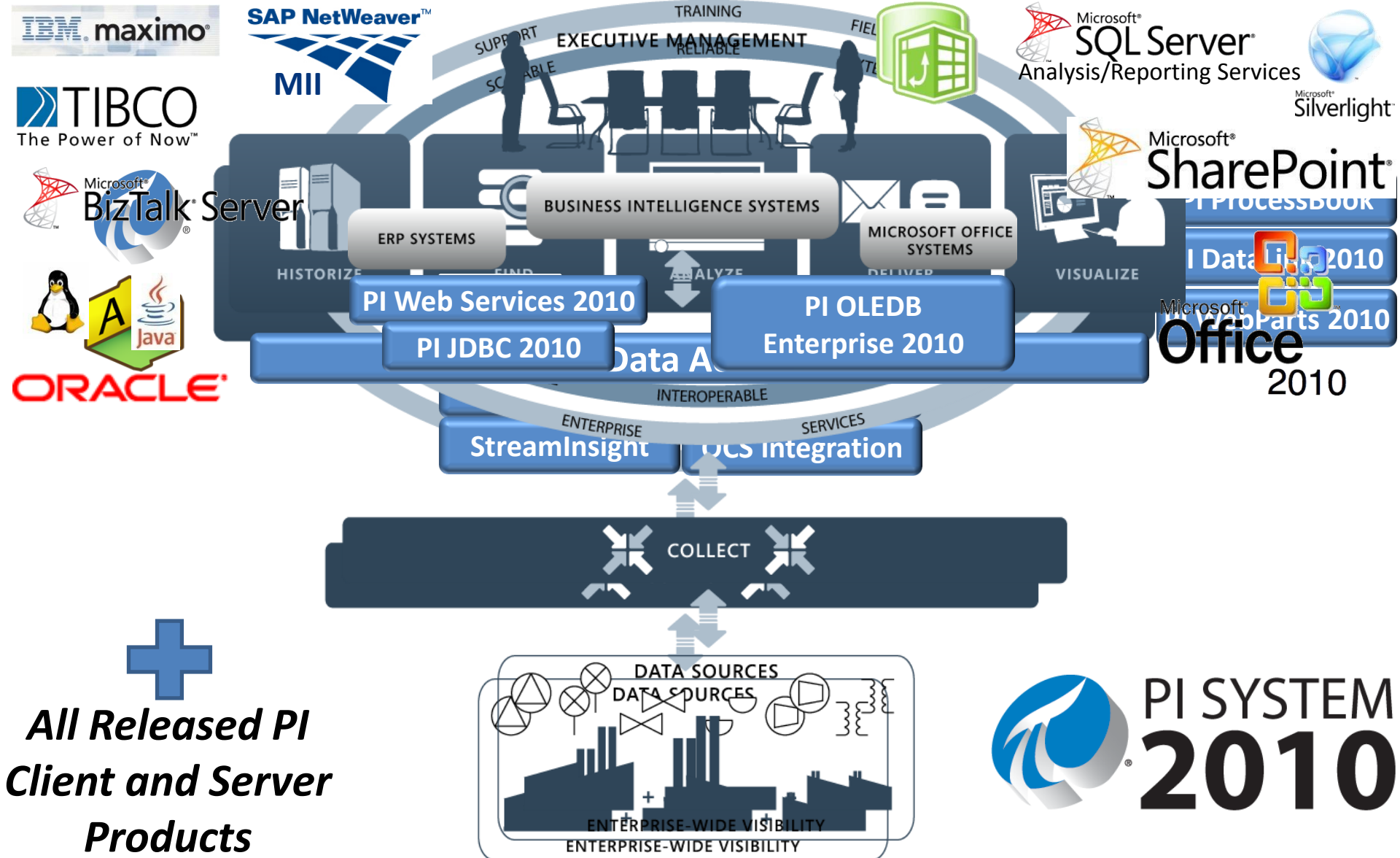


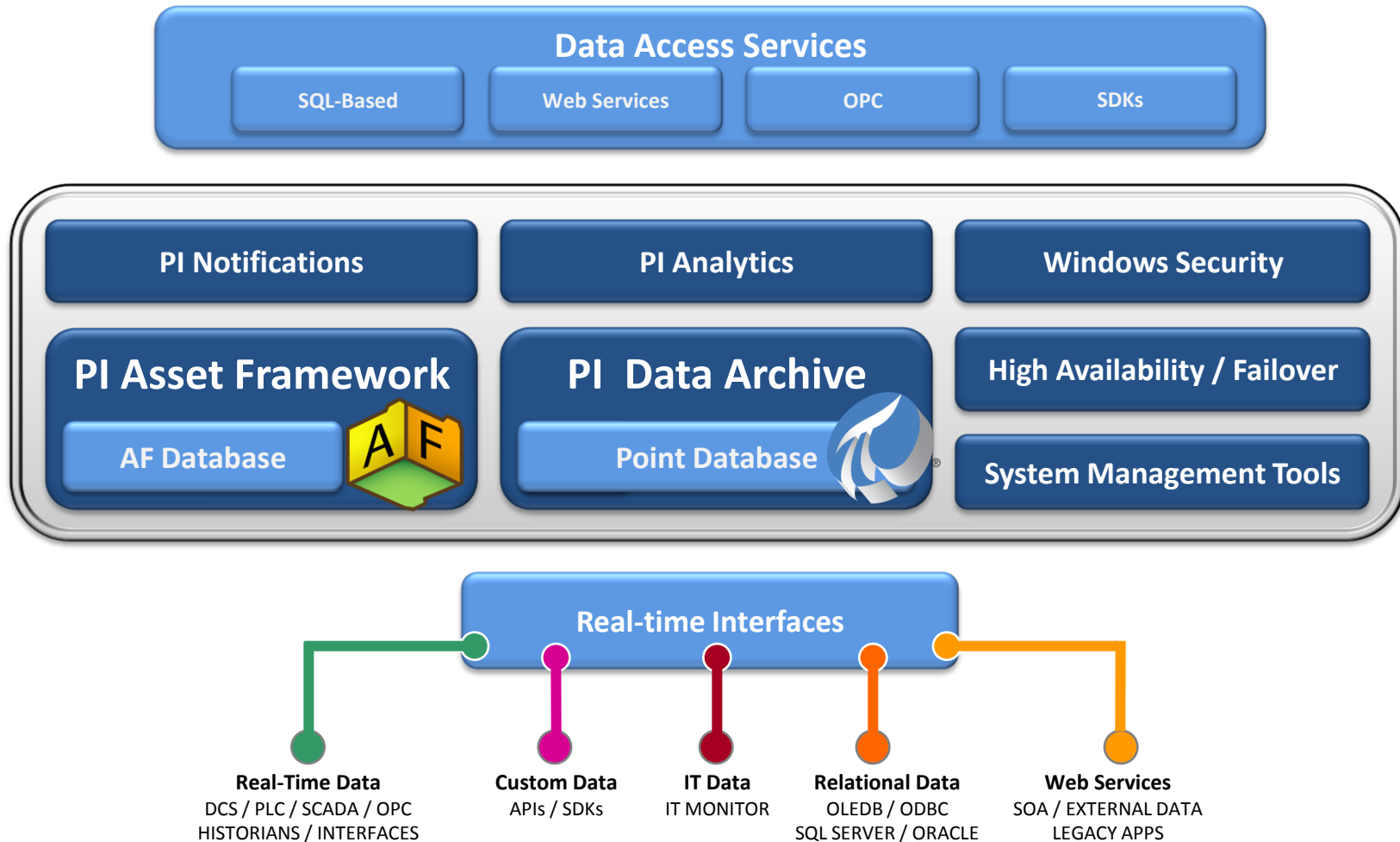
PI Server

- PI Server 2010
- Assets and Tags

Data Infrastructure and BI Platform





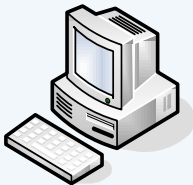


Mixed Applications

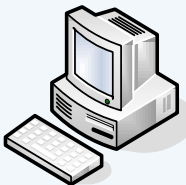
MDB based Applications



PI DataLink



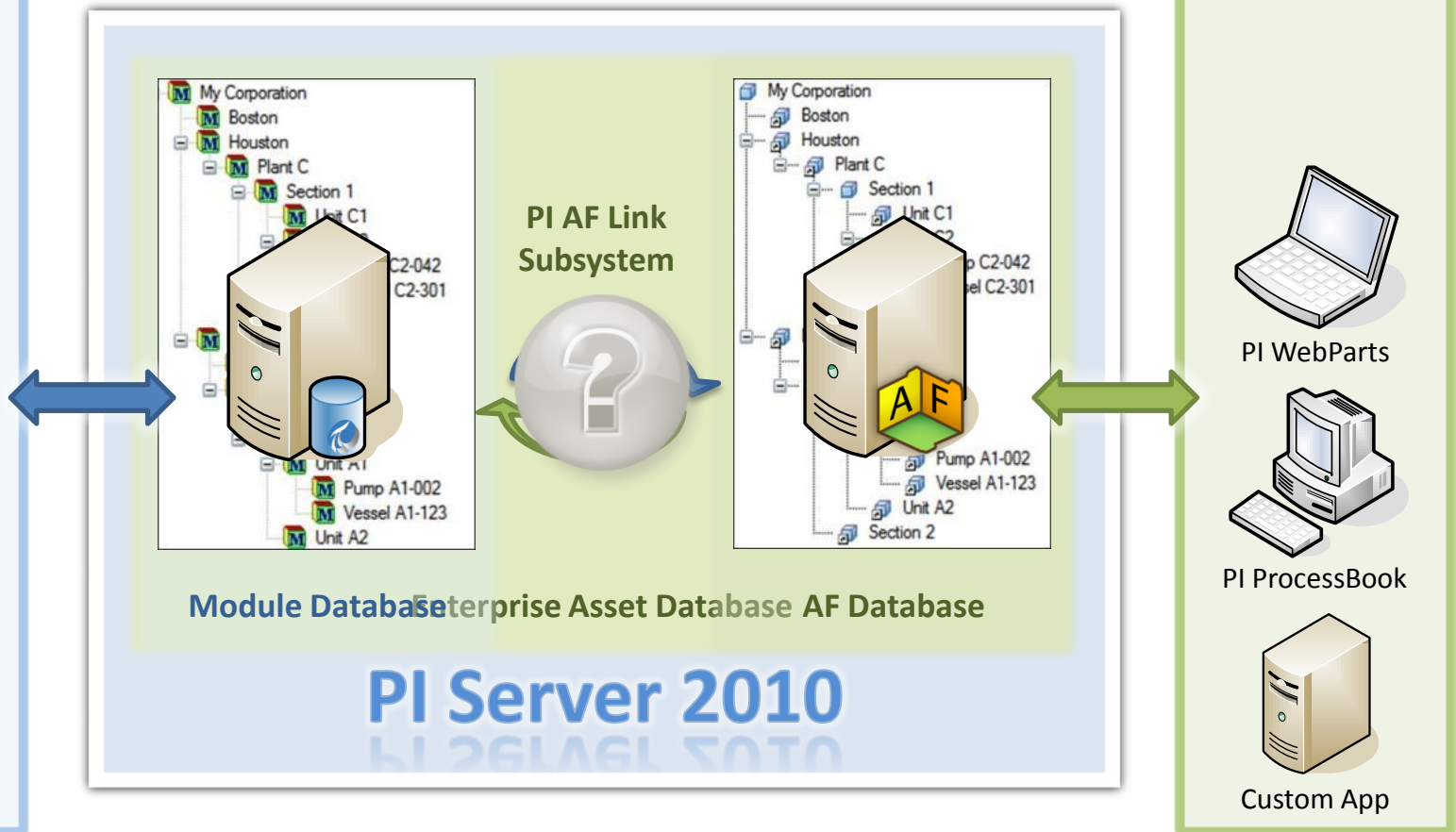
IT Monitor



BatchView



PI ACE



Upgrade Steps

1. Install or Access SQL Server
2. Install AF Server 2010
3. Prepare your Module Database
4. Upgrade to PI Server 2010
5. Enjoy AF! (MDB still available)





Scalability

Templates,
Models, etc.

Millions of
assets



Usability

Unified Data
Access

Search

Flexible
security



Reliability

HA
Solutions

Windows
Security

Preserve Your Investment: Displays, Calcs, Apps

- PI ACE 2010



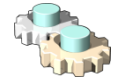
- PI for StreamInsight



- Multiple Schedulers



ACE Scheduler 1



ACE Scheduler N

- Performance Improvements
 - Components re-written in .NET



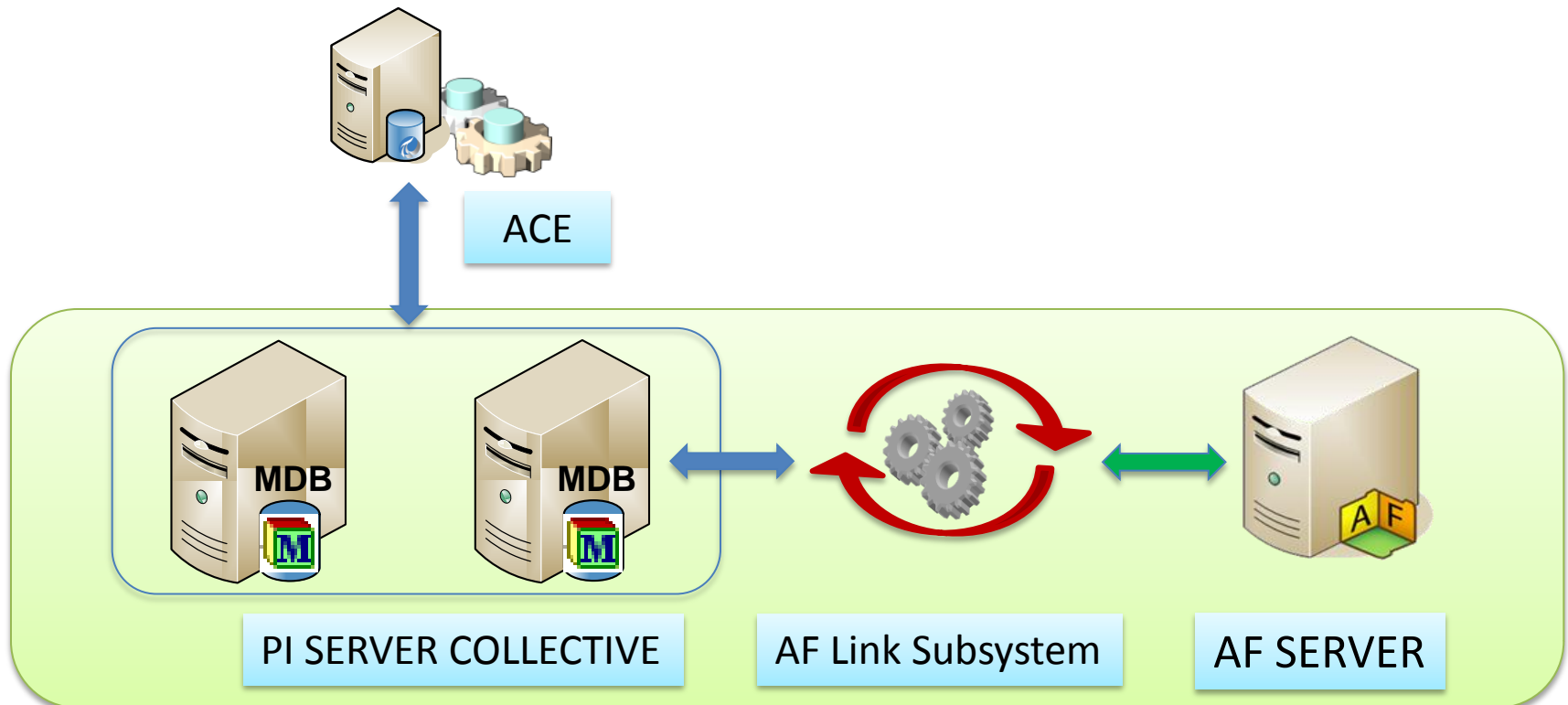
- Visual Studio 2010 support



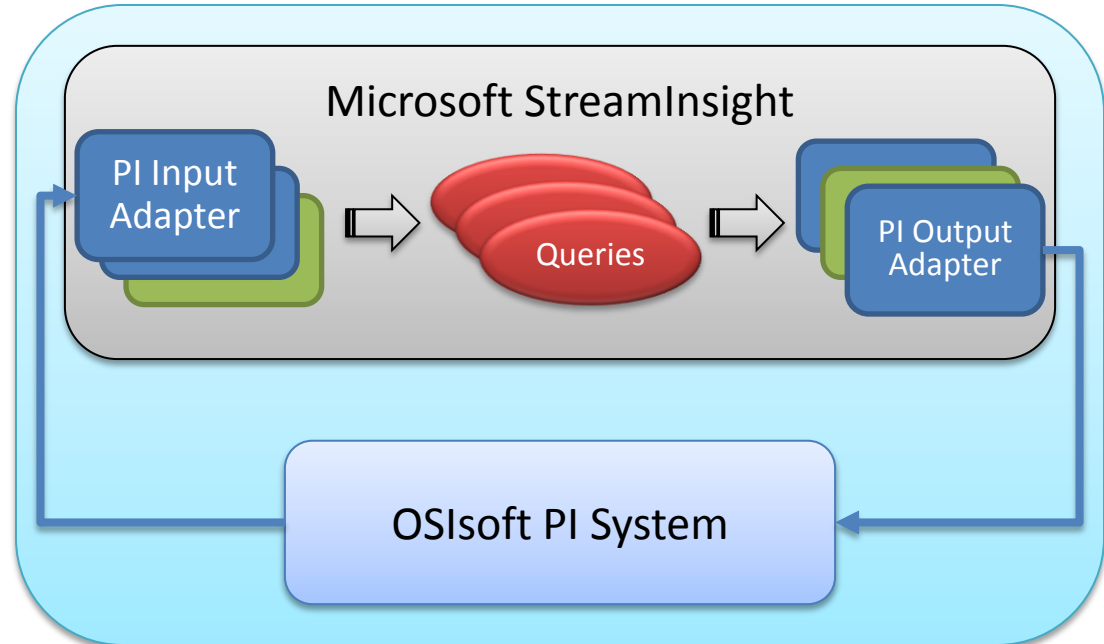
- Native 64-bit operating system support



- PI Server 2010 enables MDB to AF link and synchronization



- Data Access to the PI System for Microsoft StreamInsight
- Developers can create applications with StreamInsight using PI data
- Natural query language (LINQ)



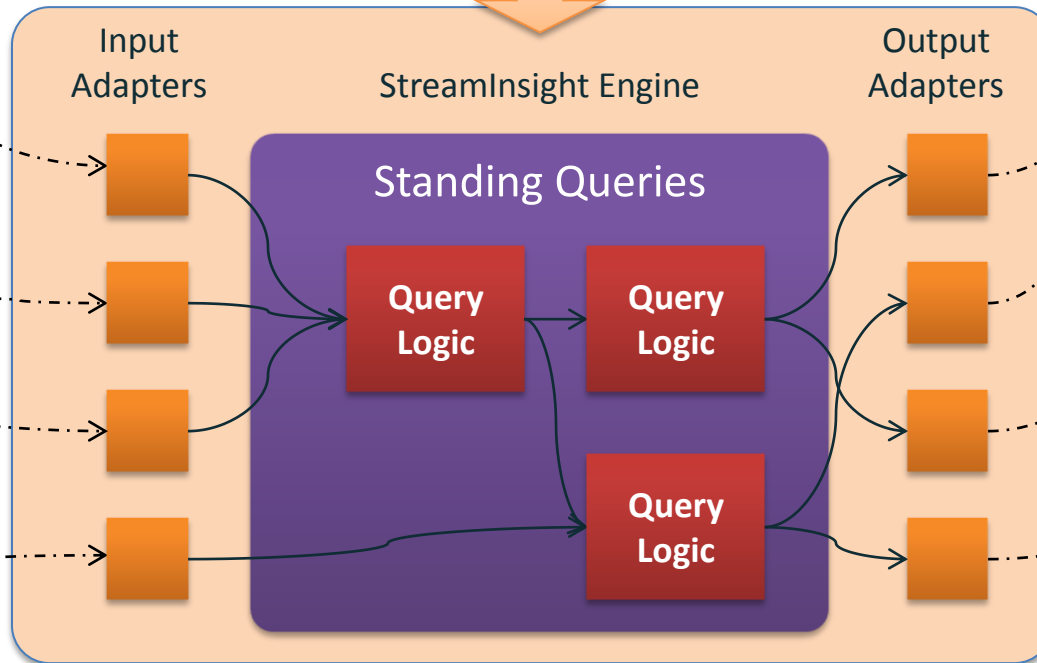
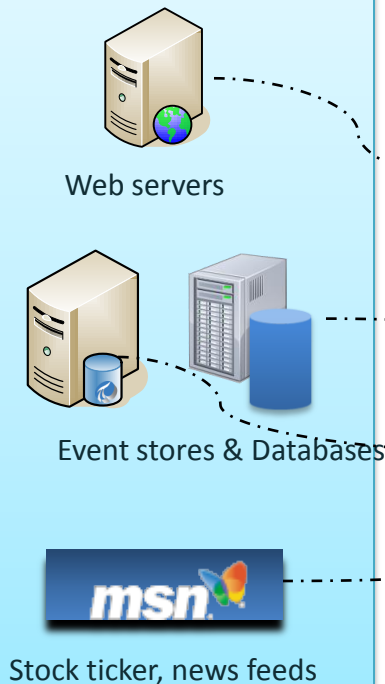
StreamInsight Application
Development in C#, LINQ



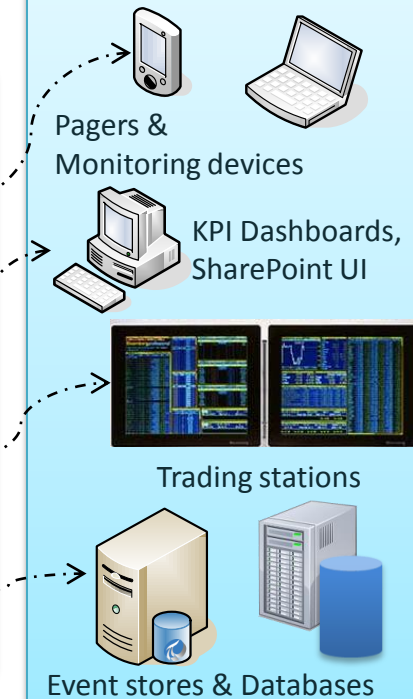
StreamInsight Application at Runtime



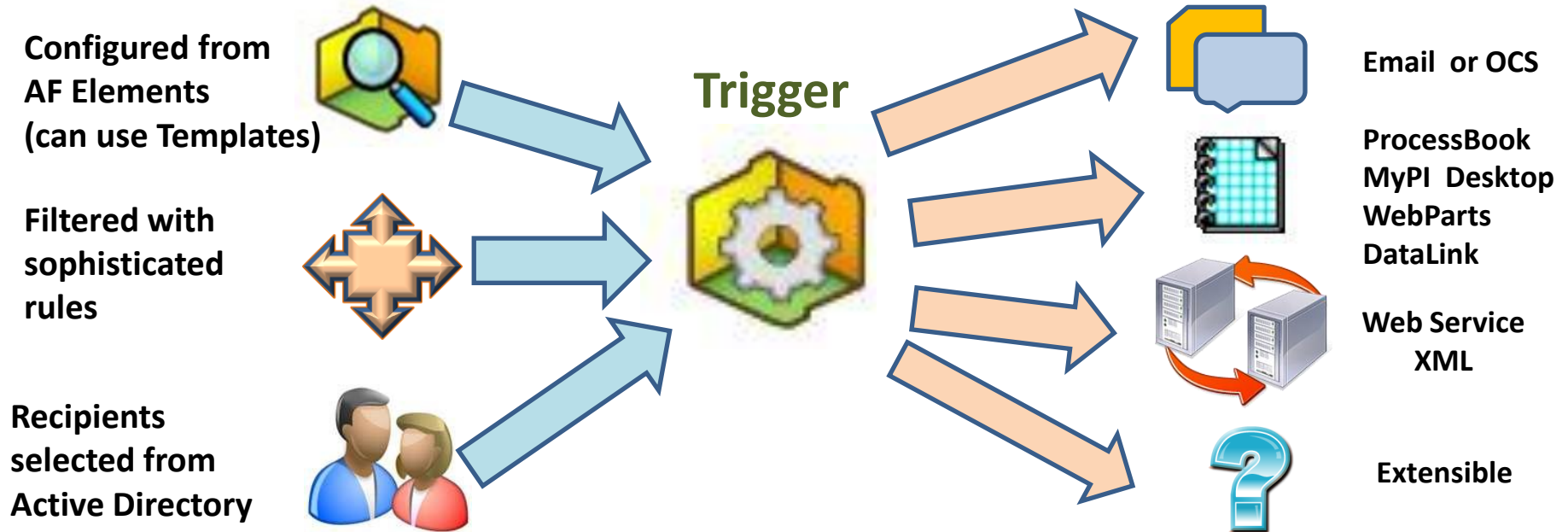
Event sources



Event targets



- StreamInsight is the Microsoft implementation of Complex Event Processing (CEP)
- What is CEP?
 - CEP is all about the ability to compute interesting patterns for events over multiple data sources
- How does StreamInsight work?
 - Developer creates queries based on business requirements
 - Queries are loaded by StreamInsight
 - Queries are executed based on time windows
 - Queries are applied to the data stream received during that period



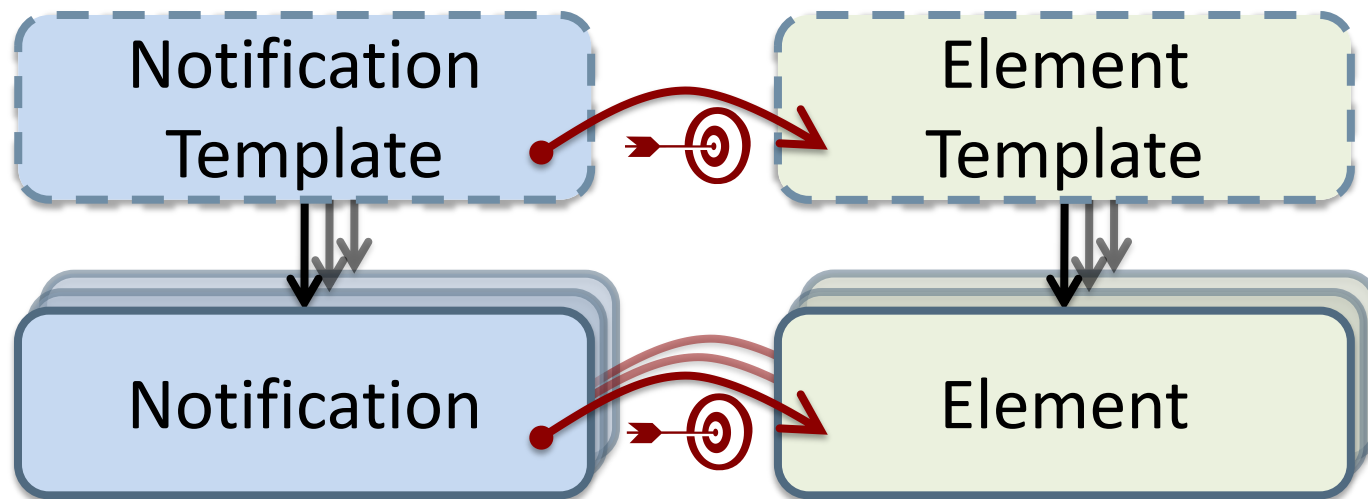
Features

- Templates
- Custom Content
- Acknowledgement and Escalation

Delivery Channels

- User can create their own
- OSIsoft vCampus – XML & Skype

- Enable rapid and automatic creation of maintainable notifications



- **Message Formatting**

- Control appearance of subject and body

- **Performance**

- **History retrieval** is improved by an order of magnitude
- Native 64-bit operating system support

- **Internationalization**

Subject: High temp for server [\\PIANODEMO\DM3\SL03-Database1](#) in Rack 23

Server [\\PIANODEMO\DM3\SL03-Database1](#) CPU exceeds temperature limit.

| Trigger Attribute | Value |
|--------------------|-------|
| CPU Temp | 72 °C |
| System Temperature | 62 °C |

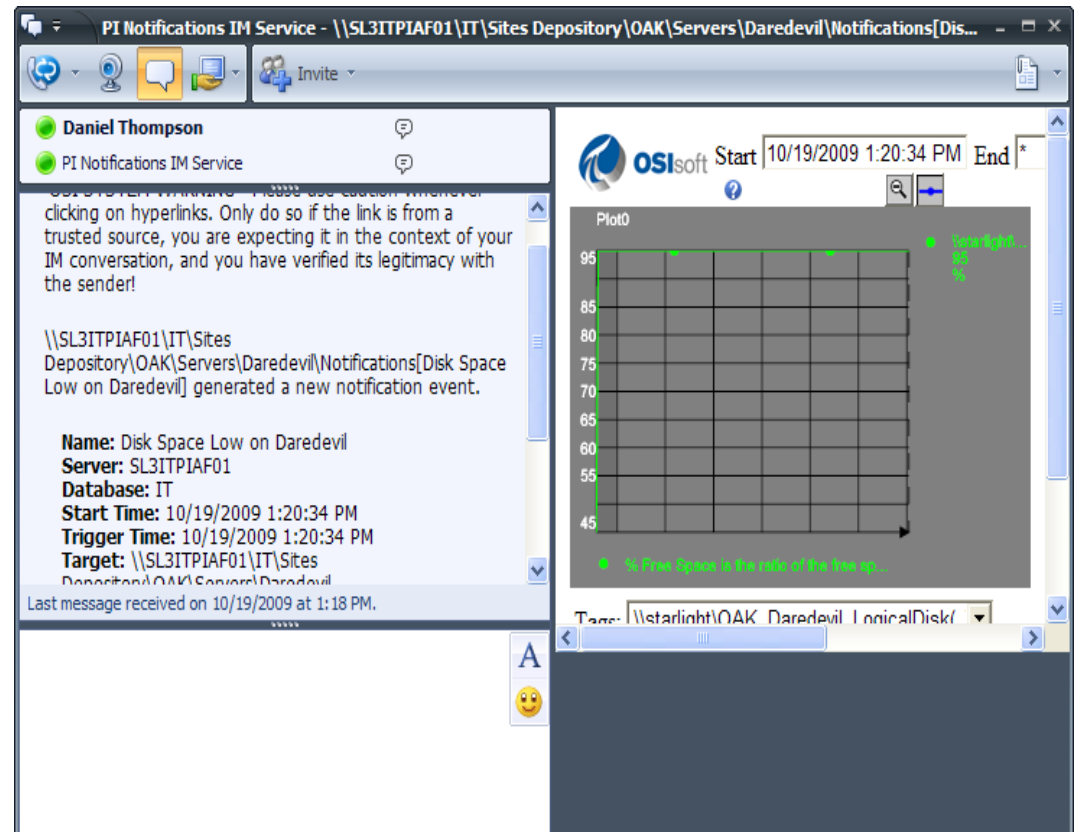


- Native Delivery Channel
- Supports presence and Instant Messaging (IM)
- Applications for phones

Windows Mobile

BlackBerry

iPhone



SQL Family

Web Services

OPC Servers

OSIsoft SDKs



Asset Information / Metadata

Notifications

Analytics

Relational / Non Time Series Data



PI Server



PI Server Collective

Time Series Data

PI Data Access: The 2010 Wave



Microsoft®
BizTalk® Server



Microsoft®
SQL Server®
Analysis/Reporting Services



Microsoft®
SharePoint®



PI JDBC
2010

PI Web
Services 2010

PI OLEDB
Enterprise 2010

PI OPC DA/HDA
Server 2010

OSIsoft SDKs



Asset Information / Metadata

Notifications

Analytics

Relational / Non Time Series Data



PI Server



PI Server Collective

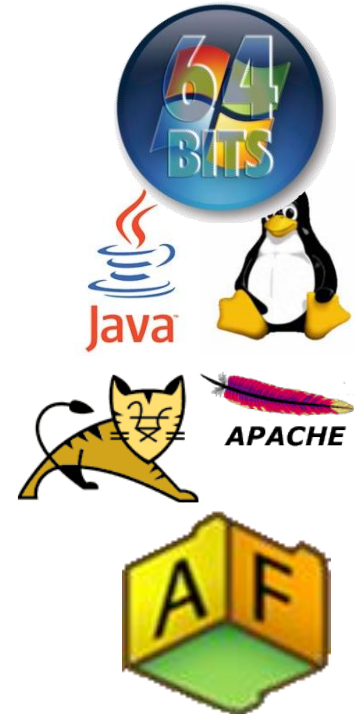
Time Series Data

SQL Family - Value Proposition

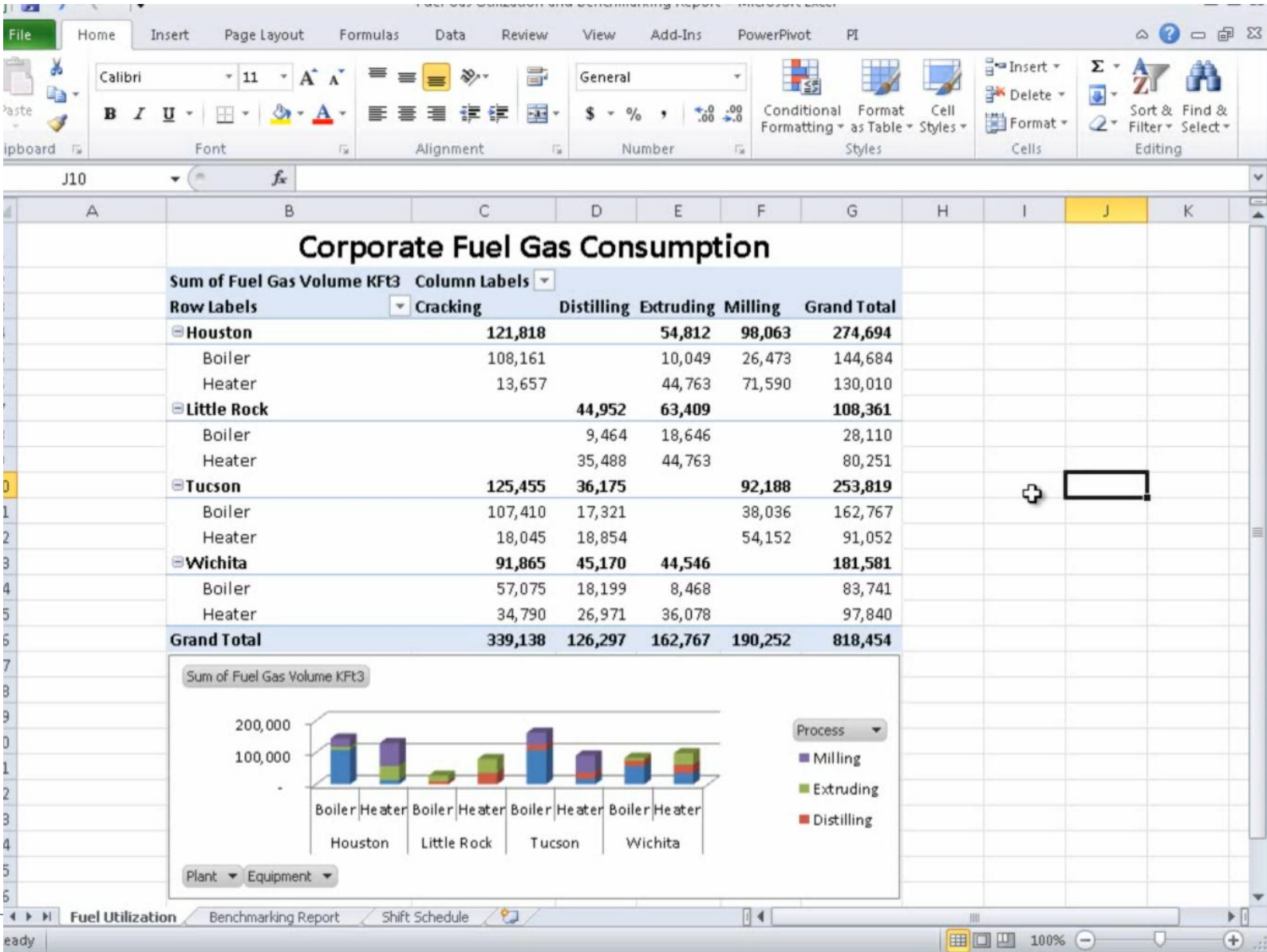
- Expose PI as a relational database
- Integrate with SQL-friendly tools



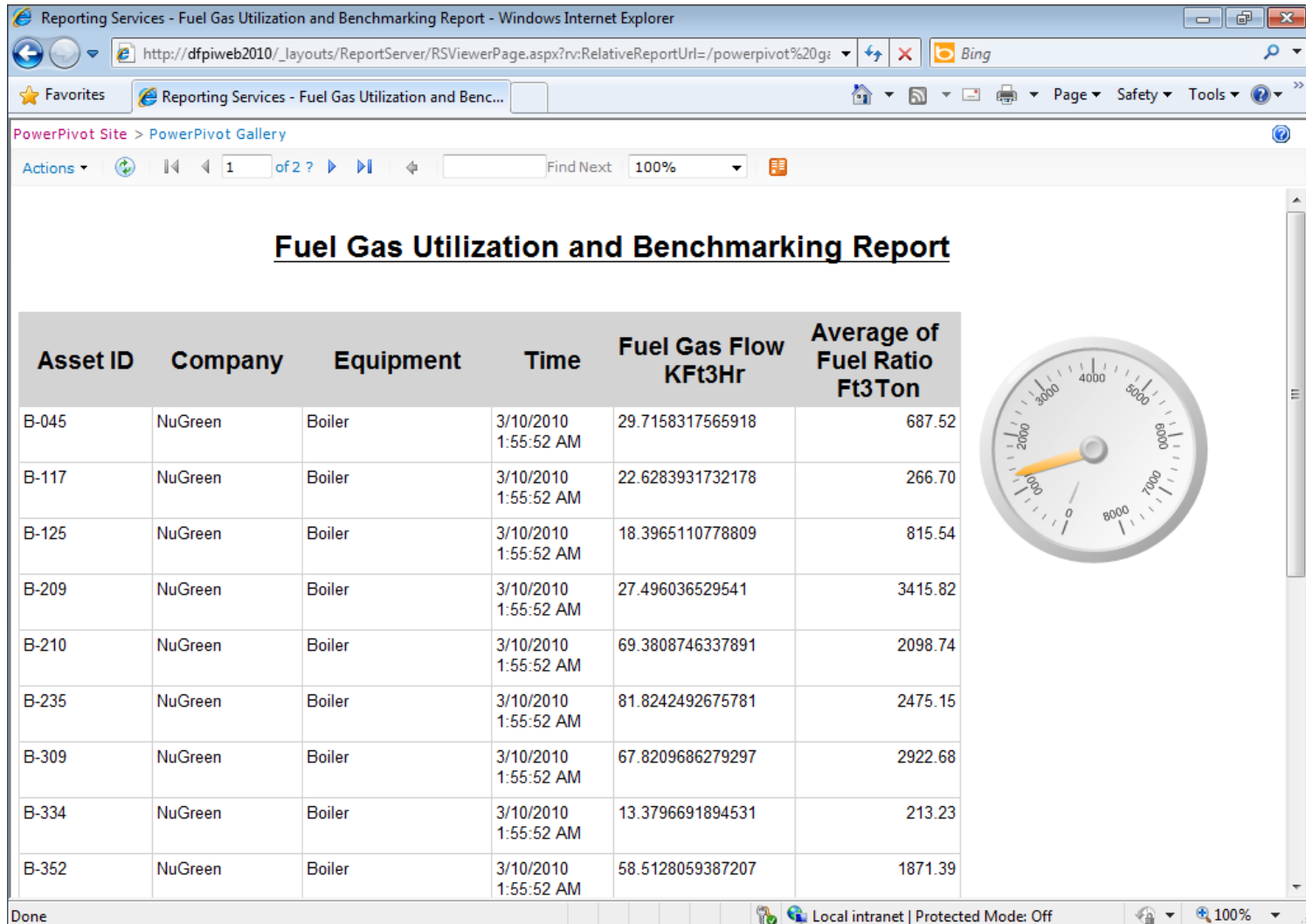
- PI OLEDB 64-bit
- PI JDBC 2010
 - Bring data to the Java world
- PI OLEDB Enterprise 2010
 - Brand new product
 - Access to AF via SQL
 - Supports custom applications and many integration scenarios
 - PI WebParts
 - PowerPivot in Excel
 - SQL Server (Reporting/Analysis Services)



PI OLEDB Enterprise in Microsoft PowerPivot



PI OLEDB Enterprise in SQL Server Reporting Services



- Talk to PI via well-known, popular standards
- Integrate with 100's of existing OPC Clients
 - Process optimization engines
 - Process analysis, calculations
 - Visualization/reporting

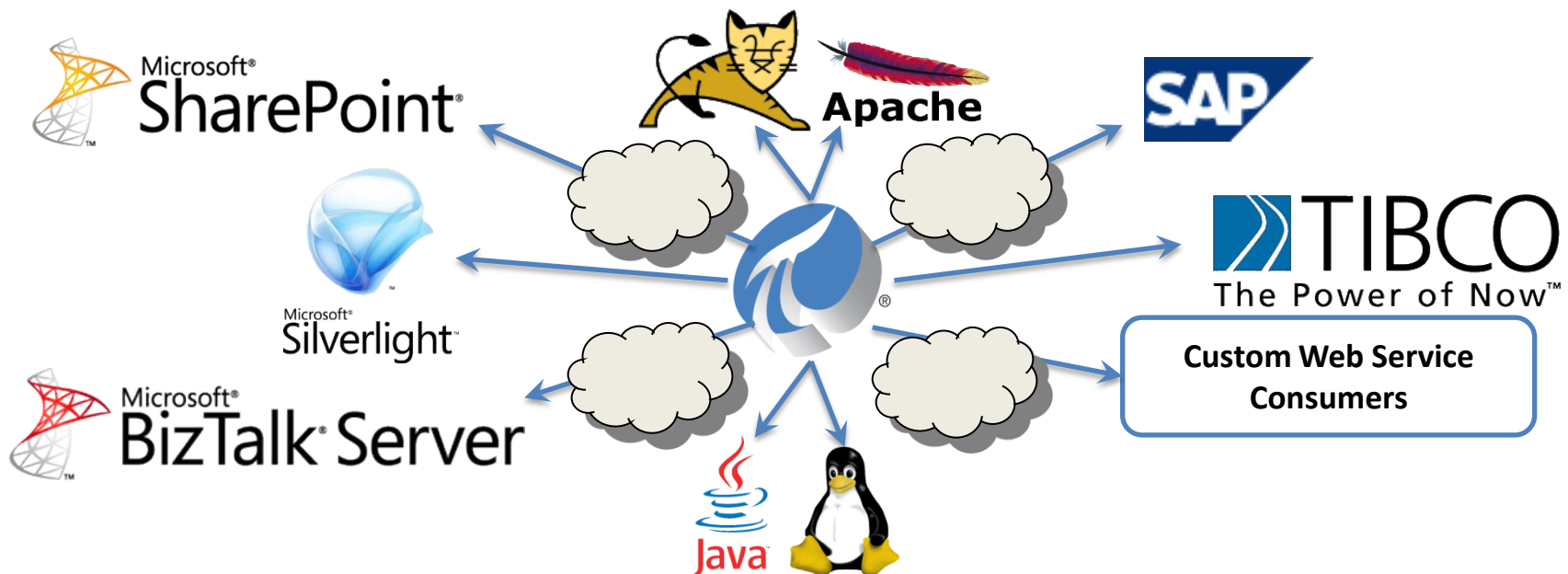


- PI OPC DA/HDA Server 2010
 - Certified for Compliance
- Currently investigating
 - PI OPC UA Server (CTP on OSIsoft vCampus)
 - PI OPC Xi Server
- OPC Foundation Road Show



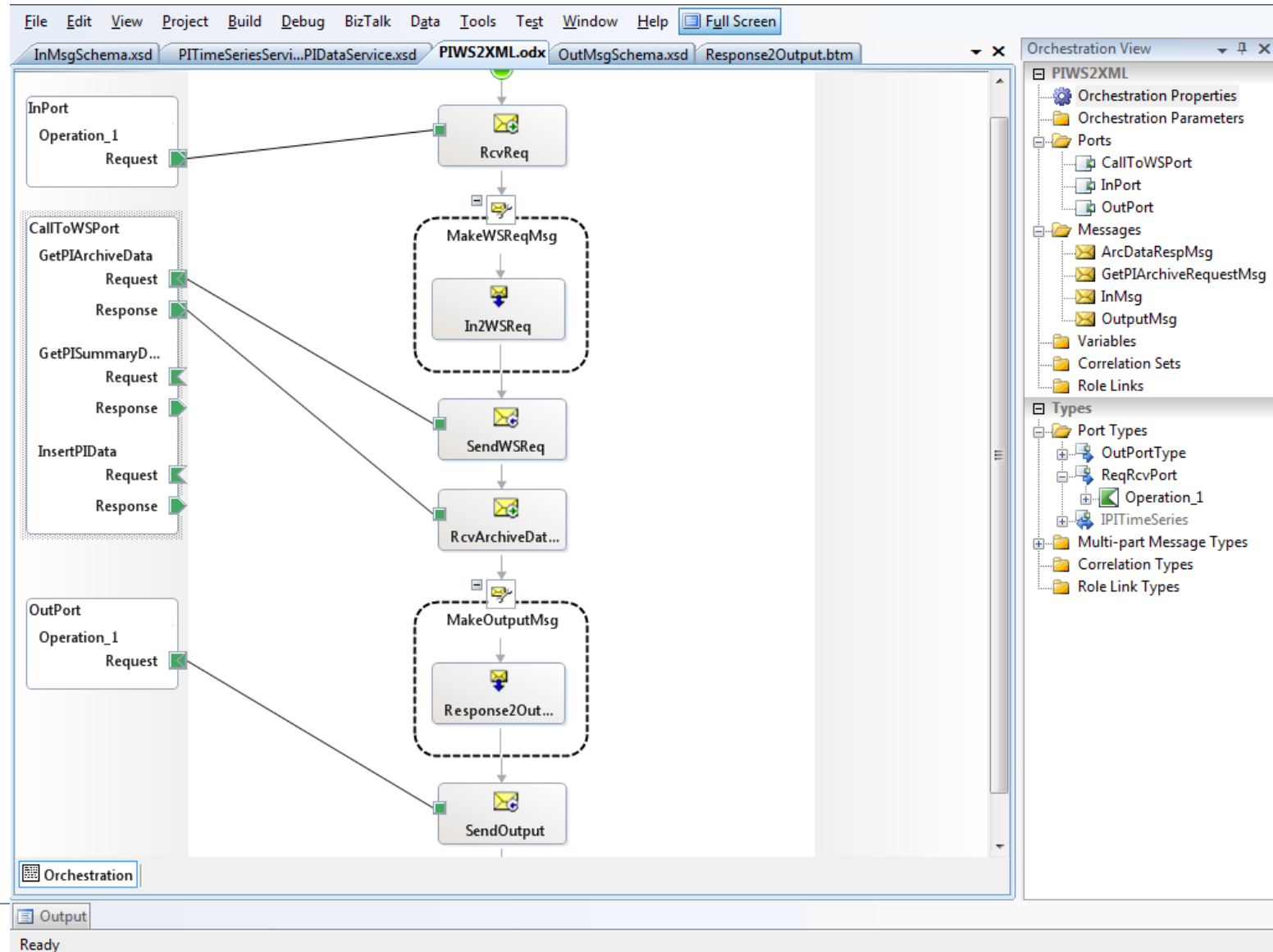
- Brand new product
- Provides access to **PI and AF** data through standard **web service** technologies
 - Many code-free integration scenarios
 - Custom applications
- Facilitates data access over secure and distributed environments
 - Nothing required on the client machine
 - Service-oriented architecture (SOA)

- Web-based visualization
- Integration with business systems
- Non-Windows environments



PI Web Services in BizTalk

(orchestration)



NuGreen - Notification Limit Change - Windows Internet Explorer

http://dfpiweb2010/NuGreen/SitePages/Notification%20Limit%20Change.aspx

Navigation: Home, RSS, Email, Print, Page, Safety, Tools, Steve Pilon

Site Actions: Browse, Page, Edit

Forms

Submit, Save, Save As, Close, Paste, Copy, Cut, Print Preview, Current View, Update, Update

Commit, Clipboard, Views, Update

- Home
- Engineering
- Manufacturing
- Help

Libraries

- Notification Limit Change
- Notification Limit Change Form

News

Offices

Departments

Search

Help

Manufacturing

- Houston Plant
- Little Rock Plant
- Tucson Plant
- Wichita Plant

Notification Limit Change

Use this form to change notification limit values.

Please enter the effective date for changes:

Target Date: 4/15/2010 8:49:09 AM

Please select the appropriate plant:

Heater:

- Heater 395: FG Limit
- Heater 393: FG Limit
- Heater 148: FG Limit

Please enter a new value Notification trigger limit:

Trigger Limit: 15

Please add any comments to support the change:

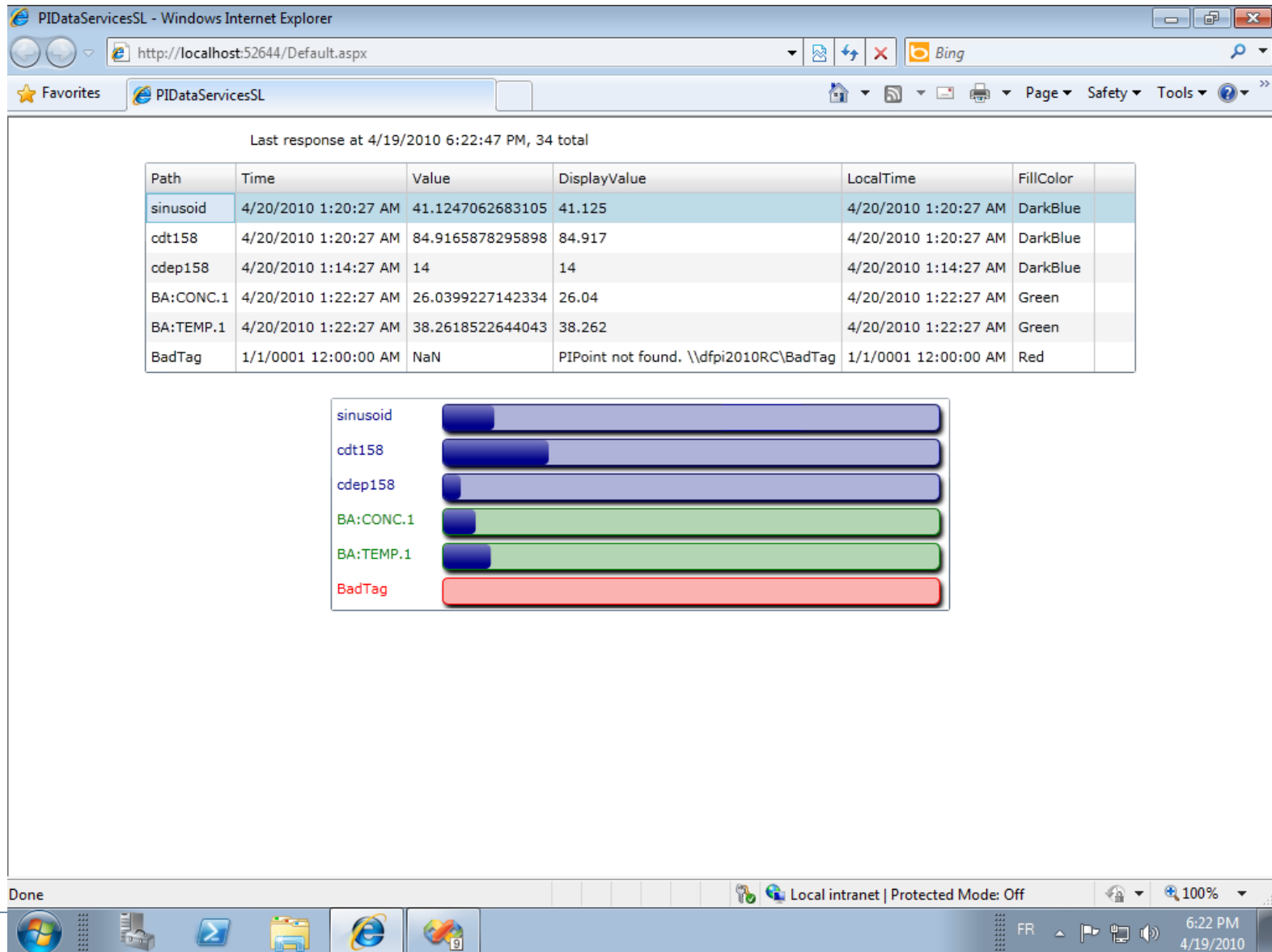
Comments:

Change setpoint

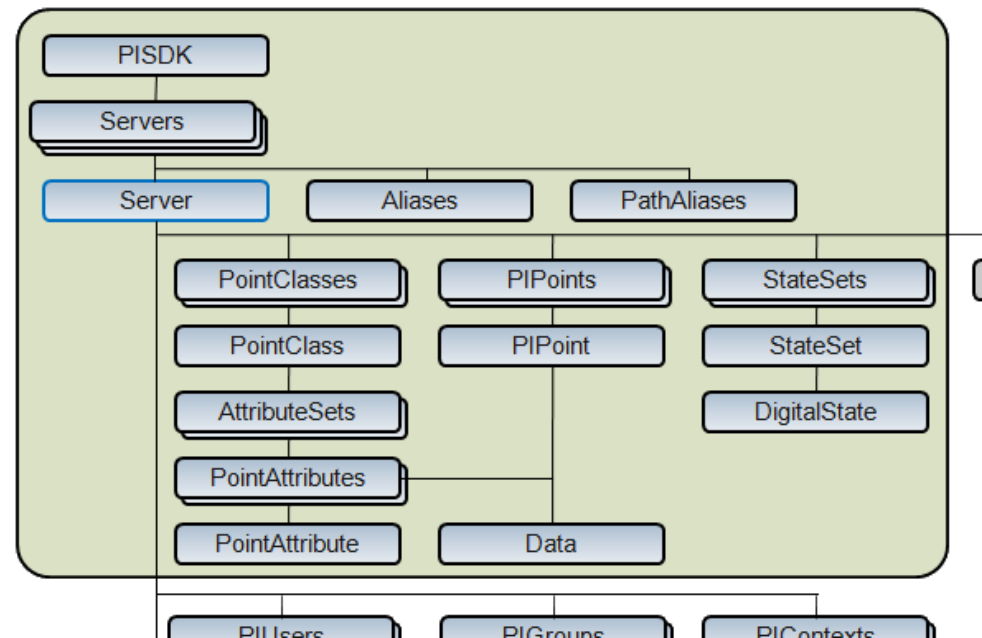
Local intranet | Protected Mode: Off

100%

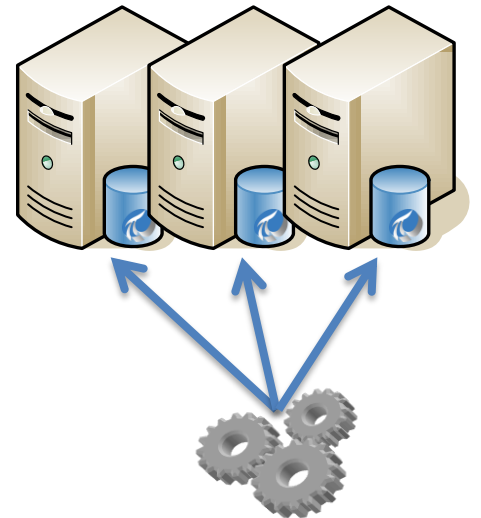
PI Web Services in Silverlight



- Object-oriented SDKs
 - PI, AF, Notifications
- Custom applications
 - Visualization
 - Configuration
 - Calculations
 - Analyses
 - Reports

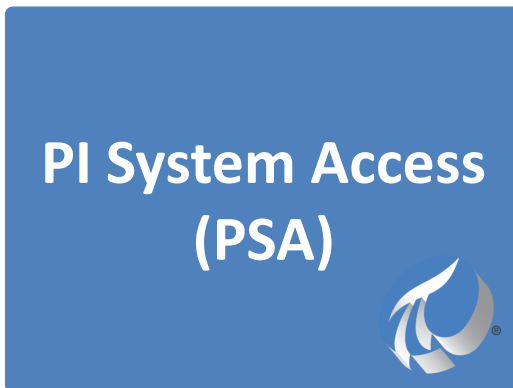


- Windows Integrated Security
 - PI SDK 1.3.6
- 64-bit
 - PI SDK 1.3.8
 - AF SDK 2.1
- Client-Side Buffering
 - PI SDK 2010 (coming)





```
ATimeRange tr = new ATimeRange(new ATime(tex  
AFValues vals = _afDB.Elements["Pump123"].Attri  
  
lstValues.Items.Clear();  
foreach(AFValue val in vals)  
{  
  
    lstValues.Items.Add(val.Value.ToString() +  
}
```



- New licensing model / new part on price list
- Provides **runtime license** for end-users to run data access products
 - Custom applications
 - Integration scenarios
- 1 PSA is valid for **1 named user**, for all PI and AF data within the organization



Products Covered by PSA Today



- OSIsoft SDKs
 - PI SDK
 - AF SDK (includes AN/EF SDK)
- SQL Family
 - PI OLEDB + PI OLEDB Enterprise
 - PI JDBC
 - PI ODBC
- PI OPC DA/HDA Server
- PI Web Services
- PI API

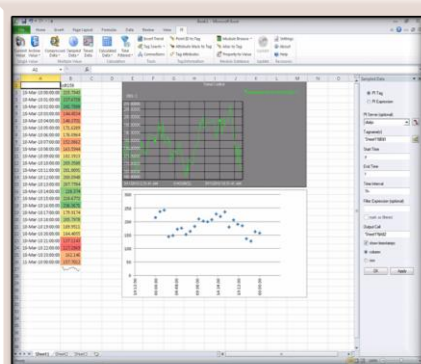




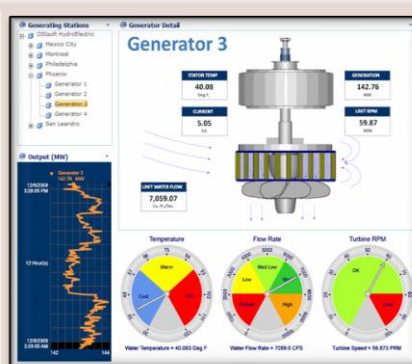
PI for Office 2010

Microsoft®
SharePoint® 2010

Microsoft®
Office 2010



PI DataLink for
Excel 2010



PI WebParts for
SharePoint 2010



PI and PowerPivot for
Excel 2010

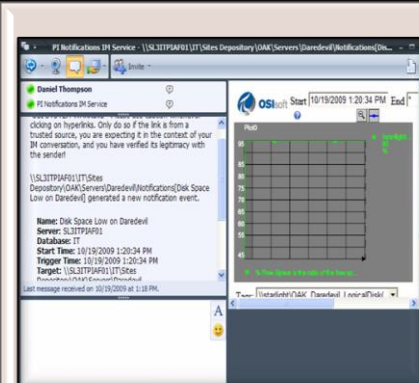


PI and PowerPivot for
SharePoint 2010

PI OLEDB
Enterprise 2010

PI Web Services
2010

PI Data Access
Technologies

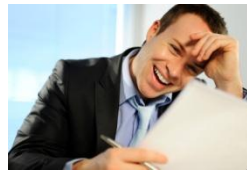


PI Notifications 1.1
OCS R2 Delivery Channel



Legacy maintenance software

- Functional
- Maintenance staff is trained on it
- Company has made a large investment in it and has created a web front end for it



Excel Reports



- Reports that engineers and managers rely on

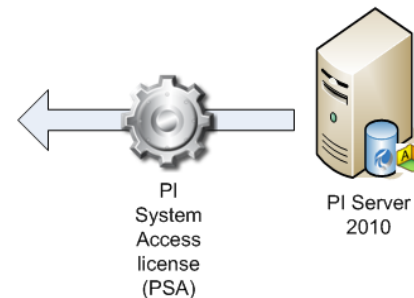
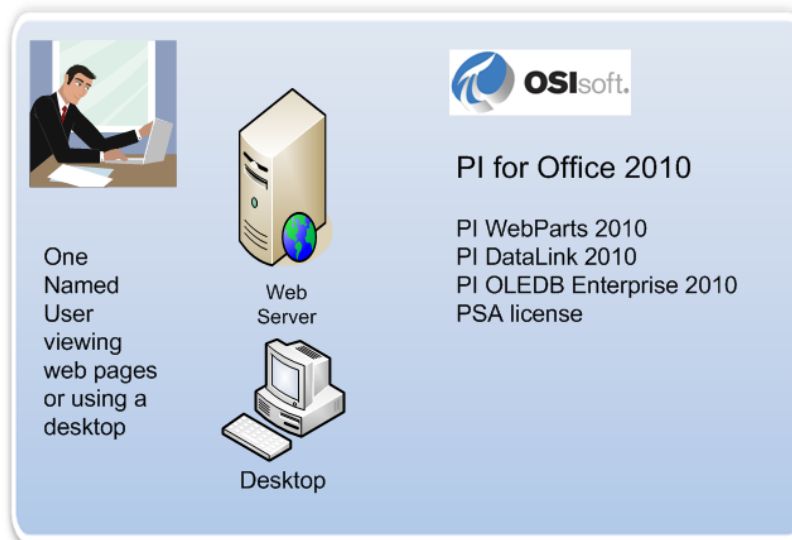


Manuals, Safety, Maps

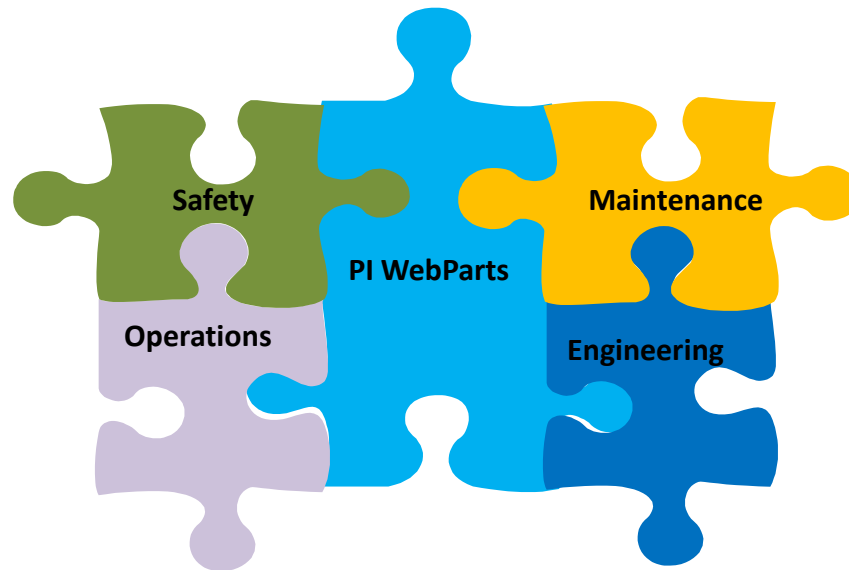
- Key data that is stored online
 - Safety
 - Equipment manuals
 - Weather
 - Maps

Integrate PI with existing investments

- Aligns with
 - PI for Office 2010
 - PI Server 2010
- Pairs with Microsoft Office 2010 components



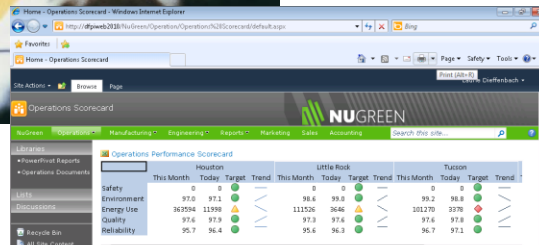
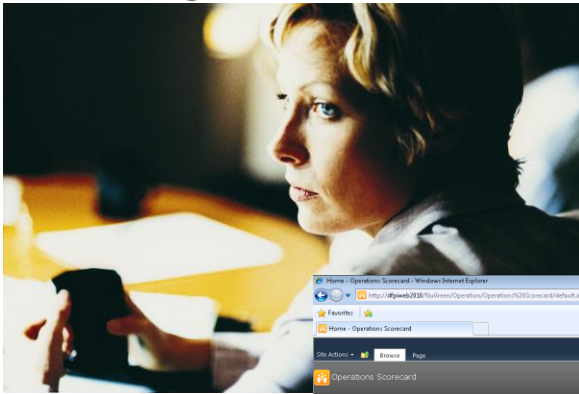
- Easy configuration, no code programming
- Leverage existing applications
- Fewer pages to maintain



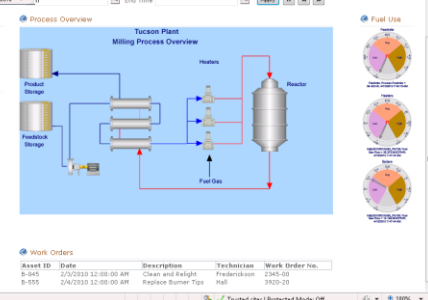
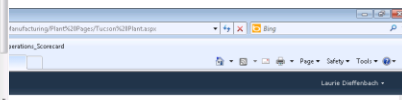
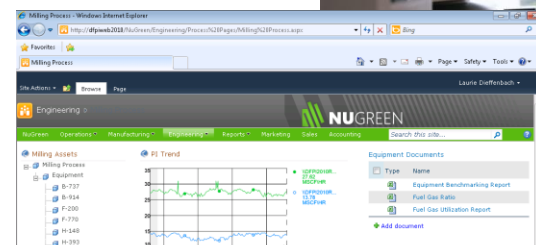
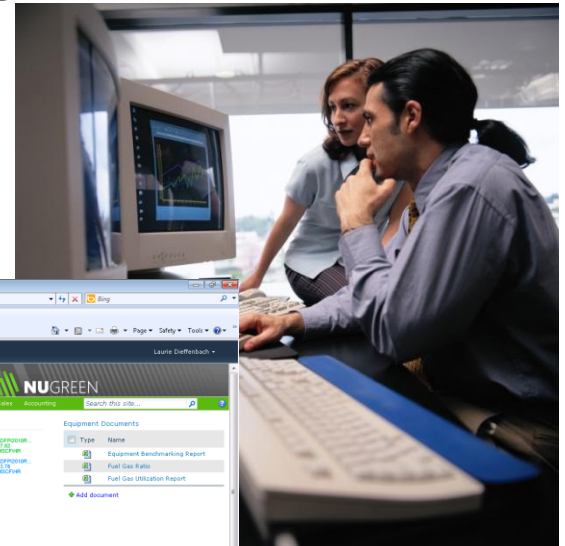
Role-based Dashboarding



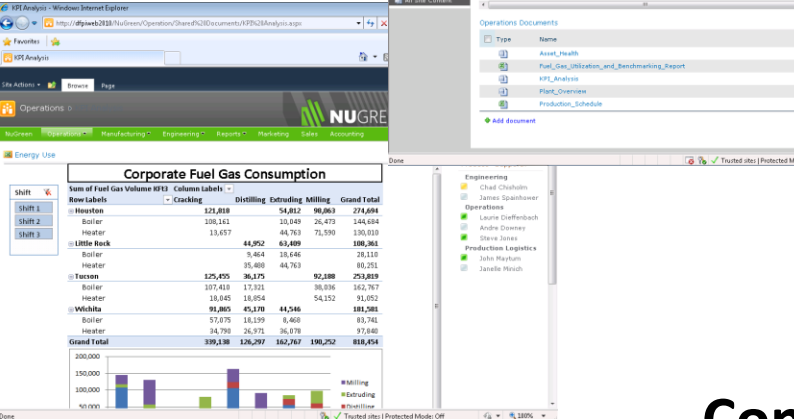
Management



Knowledge Worker

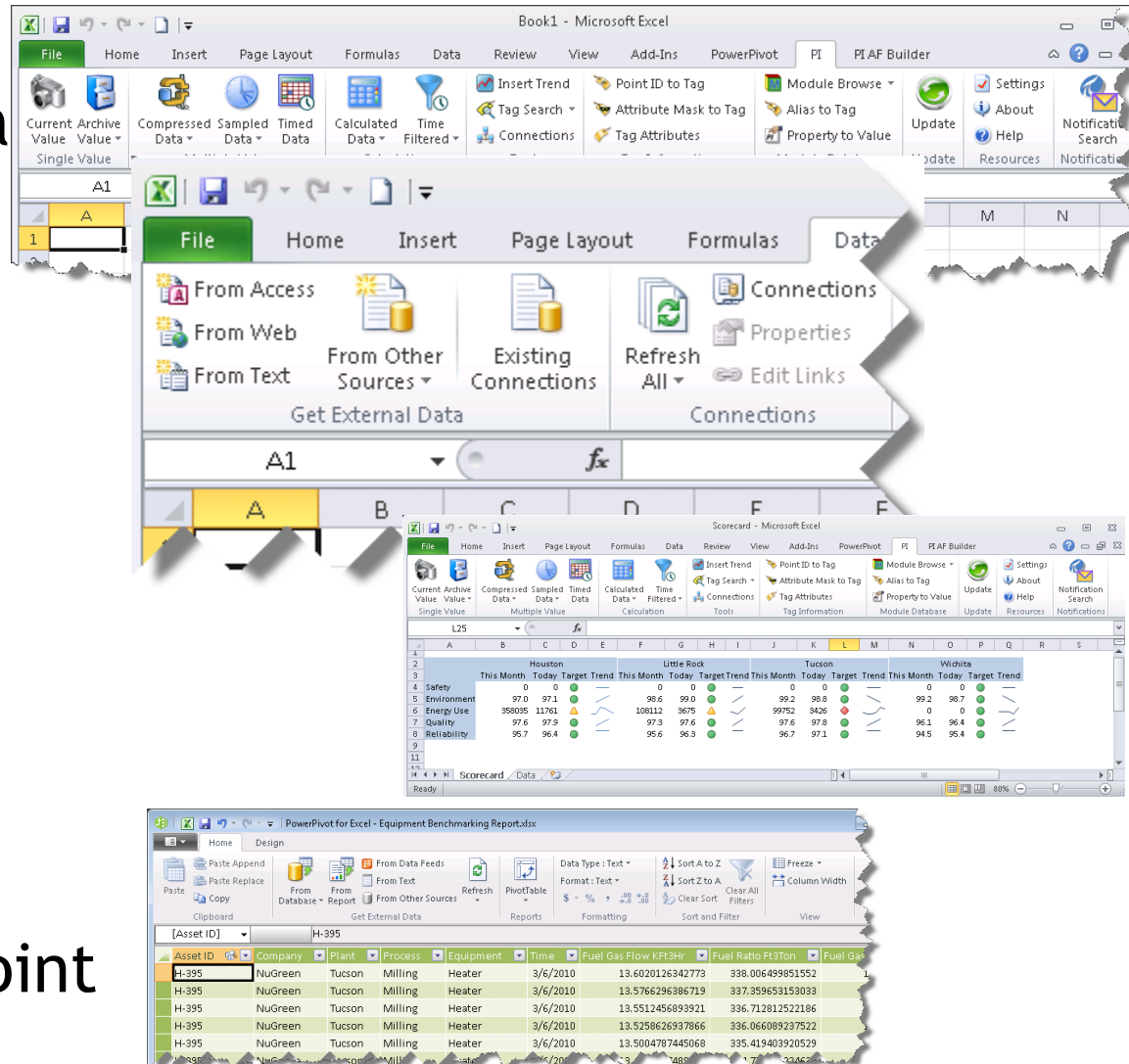


Content Creator

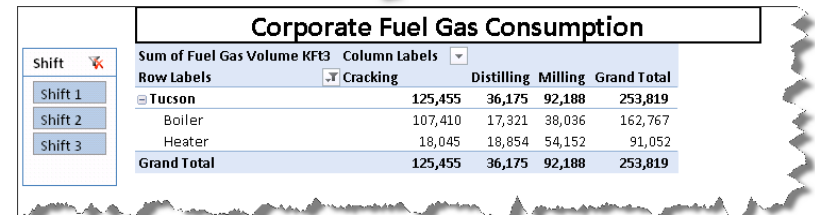
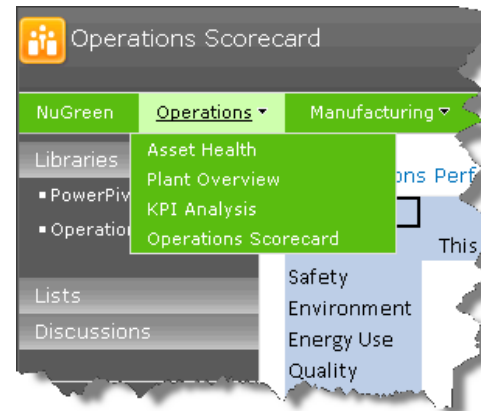


Content Creator Roles

- Use different data sources
- Create scorecards
- Create multidimensional reports
- Publish to SharePoint

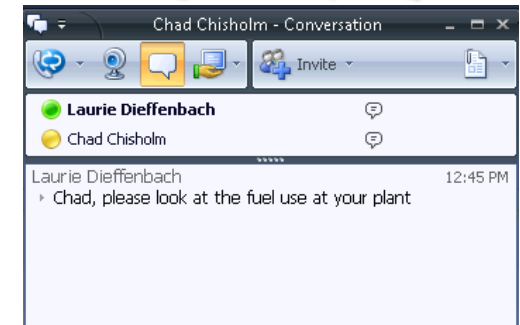


- Easy navigation to needed information
- Content is already built, but can interact with it to focus on an issue
- Easy access to assistance from experts



Corporate Fuel Gas Consumption

| Sum of Fuel Gas Volume KPI3 | Column Labels | Cracking | Distilling | Milling | Grand Total |
|-----------------------------|---------------|----------|------------|---------|-------------|
| Row Labels | | | | | |
| Tucson | | 125,455 | 36,175 | 92,188 | 253,819 |
| Boiler | | 107,410 | 17,321 | 38,036 | 162,767 |
| Heater | | 18,045 | 18,854 | 54,152 | 91,052 |
| Grand Total | | 125,455 | 36,175 | 92,188 | 253,819 |

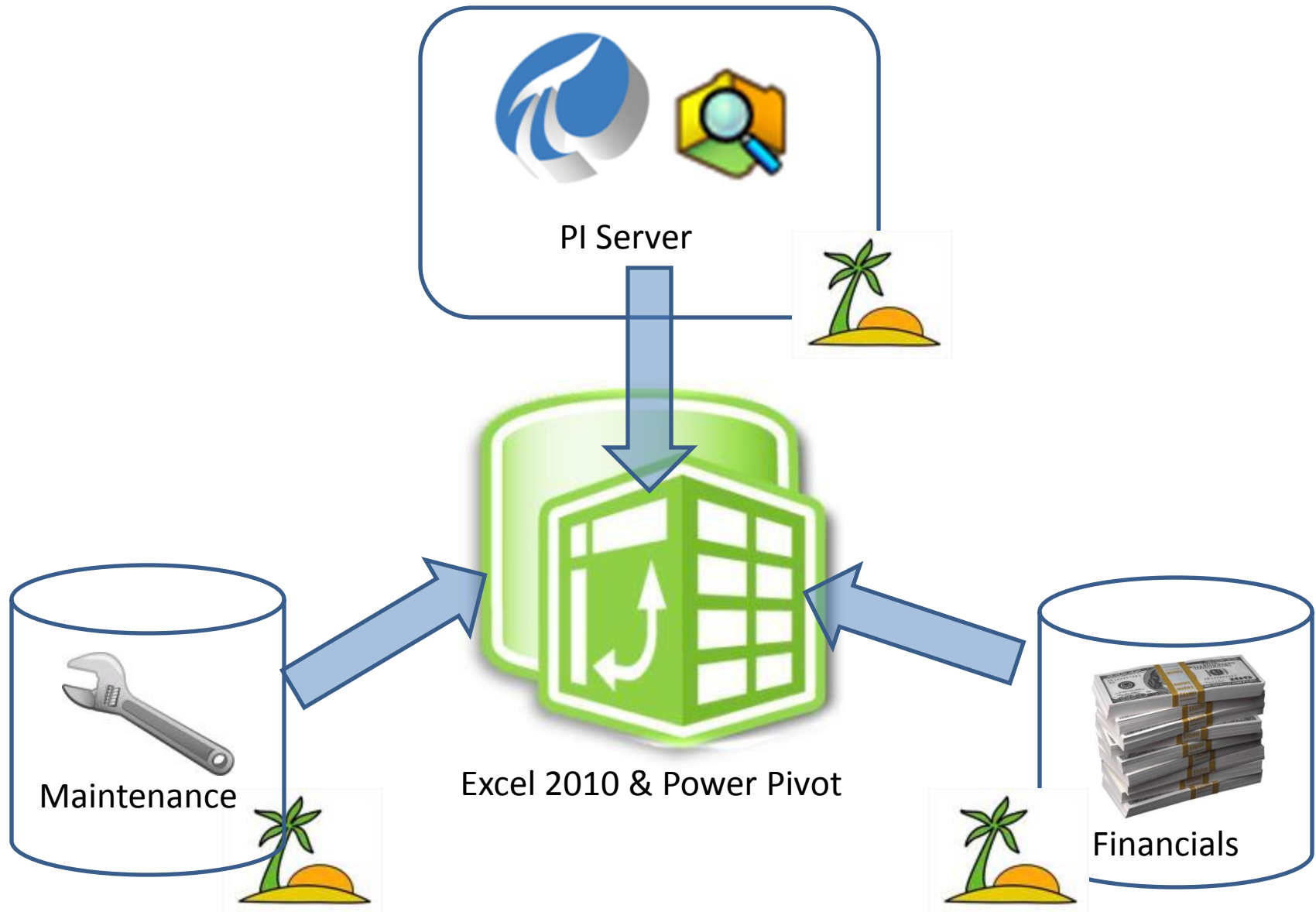


Knowledge Worker Roles

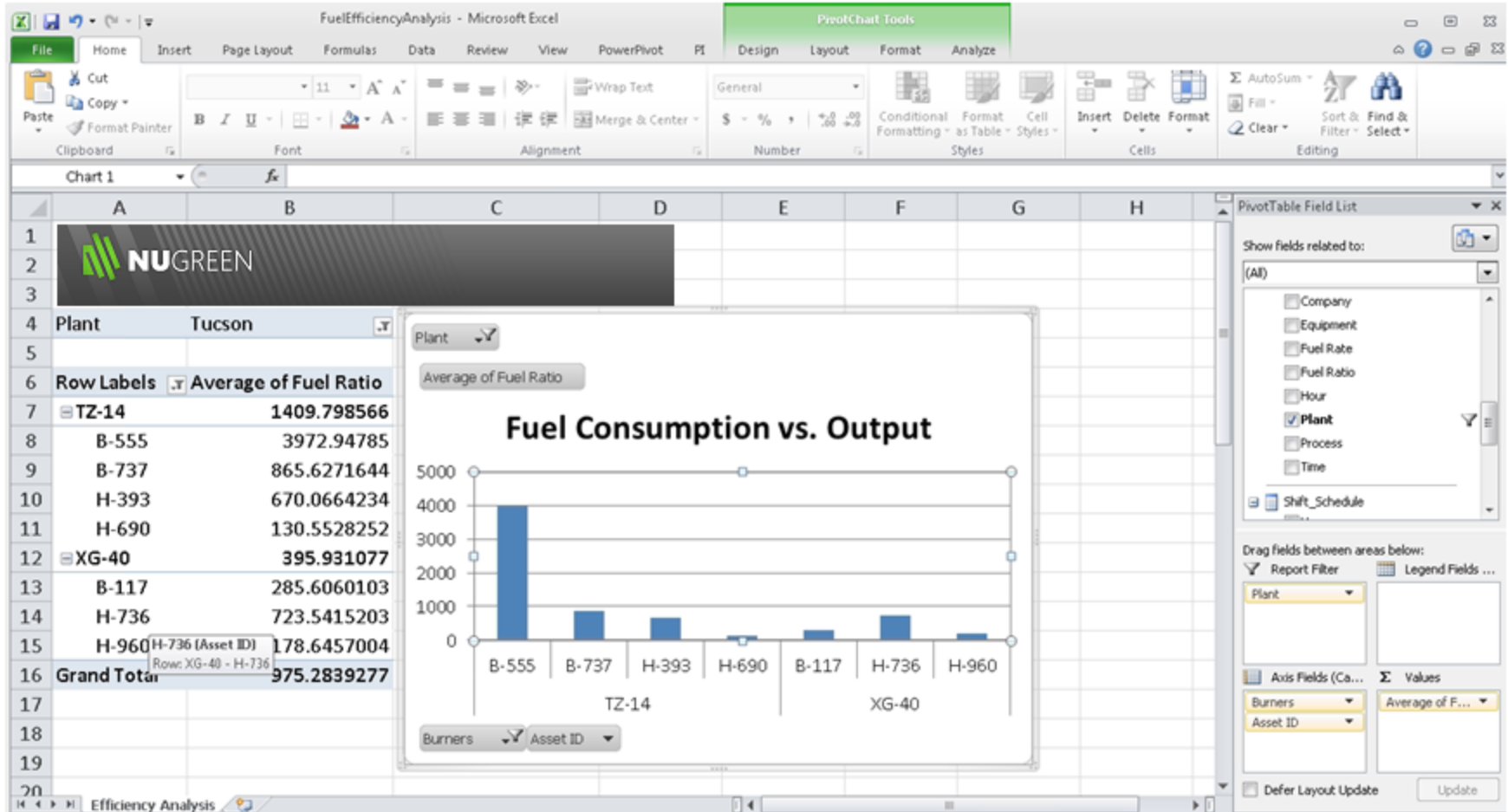
- Access to all needed tools
- Contribute material for use by others
- Act to resolve problems and prevent recurrence



User-driven Reporting



PI DataLink + Excel 2010 + PowerPivot



- Supports Microsoft Office 2010 (32-bit)
(Office 2007 and Office 2003 as well)

- Internationalization and Localization

English, French, German, Spanish, Portuguese, Russian, Simplified Chinese, Japanese, Korean

- Supports SharePoint 2010 (64-bit)
(Microsoft Office SharePoint Server 2007 as well)

- Internationalization and Localization

English, French, German, Spanish, Portuguese, Russian, Simplified Chinese, Japanese, Korean

Managed Self Service BI



PowerPivot for Excel



Microsoft®
Excel 2010

PowerPivot for SharePoint

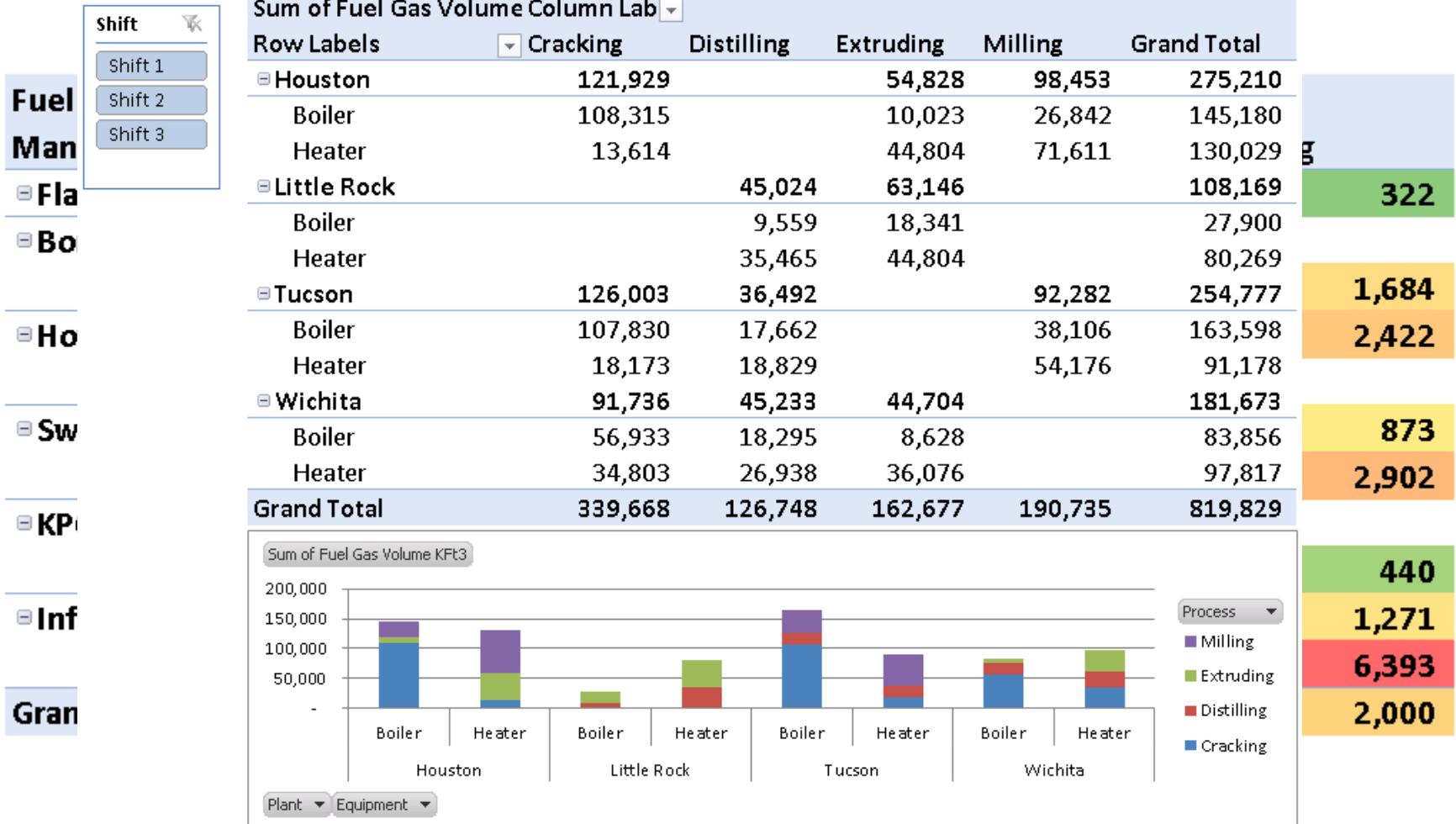


Microsoft®
SharePoint® 2010
Microsoft®
SQL Server® 2008 R2



BI for Manufacturing

30 Day Corporate Fuel Gas Consumption



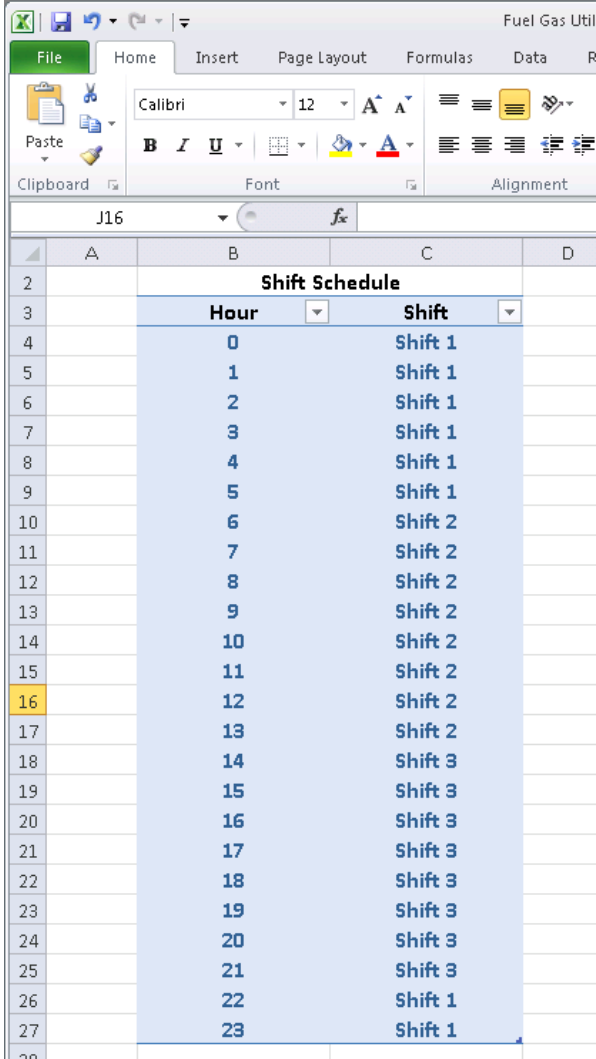
Slicing Data by Shifts

- Link in an Excel Table containing shift schedule
- Use DAX¹ to add an “Hour” column to the “Fuel Use” table;

=HOUR([Time])

- Create a Relationship between the “Hour” columns in each table.

1. Data Analysis Expression Language



The screenshot shows an Excel spreadsheet with a table named "Shift Schedule". The table has two columns: "Hour" and "Shift". The "Hour" column lists hours from 0 to 23, and the "Shift" column lists shifts: Shift 1, Shift 2, and Shift 3. The table is highlighted in blue.

| Hour | Shift |
|------|---------|
| 0 | Shift 1 |
| 1 | Shift 1 |
| 2 | Shift 1 |
| 3 | Shift 1 |
| 4 | Shift 1 |
| 5 | Shift 1 |
| 6 | Shift 2 |
| 7 | Shift 2 |
| 8 | Shift 2 |
| 9 | Shift 2 |
| 10 | Shift 2 |
| 11 | Shift 2 |
| 12 | Shift 2 |
| 13 | Shift 2 |
| 14 | Shift 3 |
| 15 | Shift 3 |
| 16 | Shift 3 |
| 17 | Shift 3 |
| 18 | Shift 3 |
| 19 | Shift 3 |
| 20 | Shift 3 |
| 21 | Shift 3 |
| 22 | Shift 1 |
| 23 | Shift 1 |

PowerPivot for Excel - Fuel Gas Utilization and Benchmarking Report.xlsx

Home Design

Paste Append
Paste Replace
Copy

From Database
From Report
Refresh
PivotTable

Data Type: Whole Number
Format: General
\$ % , .00 .00

Sort Smallest to Largest
Sort Largest to Smallest
Clear Sort

Freeze
Column Width
Clear All Filters

Clipboard Get External Data Reports Formatting Sort and Filter View

[Hour] =HOUR([Time])

| | Equipment | Time | Fuel Gas Flow Kft3Hr | Fuel Ratio Ft3Ton | Fuel Gas Volume Kft3 | Hour | Add Column |
|--|-----------|----------|----------------------|-------------------|----------------------|------|------------|
| | Heater | 3/6/2010 | 13.6020126342773 | 338.006499851552 | 13.6147045862401 | 10 | |
| | Heater | 3/6/2010 | 13.5766296386719 | 337.359653153033 | 13.5893211115485 | 11 | |
| | Heater | 3/6/2010 | 13.5512456893921 | 336.712812522186 | 13.563937636857 | 12 | |
| | Heater | 3/6/2010 | 13.5258626937866 | 336.066089237522 | 13.5385541621655 | 13 | |
| | Heater | 3/6/2010 | 13.5004787445068 | 335.419403920529 | 13.5131706874739 | 14 | |
| | Heater | 3/6/2010 | 13.4750957489014 | 334.772772224634 | 13.4877872127824 | 15 | |
| | Heater | 3/6/2010 | 13.4497117996216 | 334.126210270784 | 13.4624037380908 | 16 | |
| | Heater | 3/6/2010 | 13.4243288040161 | 333.47973364509 | 13.4370202633993 | 17 | |
| | Heater | 3/6/2010 | 13.3989448547363 | 332.833263417672 | 13.4116367887078 | 18 | |
| | Heater | 3/6/2010 | 13.3735618591309 | 332.186910099914 | 13.3862533140162 | 19 | |
| | Heater | 3/6/2010 | 13.3481779098511 | 331.540594703699 | 13.3608698393247 | 20 | |
| | Heater | 3/6/2010 | 13.3227949142456 | 330.894333245442 | 13.3354863646331 | 21 | |
| | Heater | 3/6/2010 | 13.2974109649658 | 330.24814110651 | 13.3101028899416 | 22 | |
| | Heater | 3/6/2010 | 13.2720279693604 | 329.602034236077 | 13.2847194152501 | 23 | |
| | Heater | 3/7/2010 | 13.2466440200806 | 328.95596525647 | 13.2593359405585 | 0 | |
| | Heater | 3/7/2010 | 13.2212610244751 | 328.309950425862 | 13.233952465867 | 1 | |
| | Heater | 3/7/2010 | 13.1958770751953 | 327.664004633039 | 13.2085689911754 | 2 | |
| | Heater | 3/7/2010 | 13.1704940795898 | 327.018144068985 | 13.1831855164839 | 3 | |
| | Heater | 3/7/2010 | 13.1451101303101 | 326.377290453394 | 13.1578070417924 | 4 | |

30 Day Fuel Gas Use Shift_Schedule

Record: 1 of 26,677

File Home Insert Page Layout Formulas Data Review View Add-Ins PowerPivot

Options Design

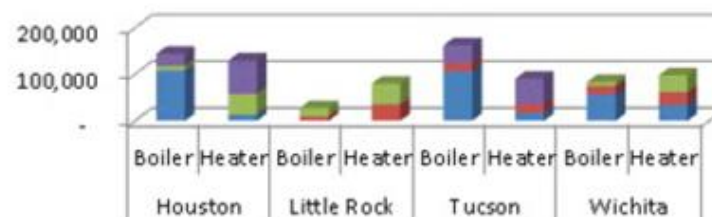


C5 108161.237925149

Corporate Fuel Gas Consumption

| Sum of Fuel Gas Volume Kft3 | | Column Labels | | | |
|-----------------------------|----------|---------------|-----------|---------|-------------|
| Row Labels | Cracking | Distilling | Extruding | Milling | Grand Total |
| Houston | 121,818 | | 54,812 | 98,063 | 274,694 |
| Boiler | 108,161 | | 10,049 | 26,473 | 144,684 |
| Heater | 13,657 | | 44,763 | 71,590 | 130,010 |
| Little Rock | | 44,952 | 63,409 | | 108,361 |
| Boiler | | 9,464 | 18,646 | | 28,110 |
| Heater | | 35,488 | 44,763 | | 80,251 |
| Tucson | 125,455 | 36,175 | | 92,188 | 253,819 |
| Boiler | 107,410 | 17,321 | | 38,036 | 162,767 |
| Heater | 18,045 | 18,854 | | 54,152 | 91,052 |
| Wichita | 91,865 | 45,170 | 44,546 | | 181,581 |
| Boiler | 57,075 | 18,199 | 8,468 | | 83,741 |
| Heater | 34,790 | 26,971 | 36,078 | | 97,840 |
| Grand Total | 339,138 | 126,297 | 162,767 | 190,252 | 818,454 |

Sum of Fuel Gas Volume Kft3



Plant Equipment

PowerPivot Field List

PowerPivot data was modified

Refresh

Choose fields to add to report:

Search

30 Day Fuel Gas Use

- ☐ Asset ID
- ☐ Company
- ☒ Plant
- ☒ Process
- ☒ Equipment
- ☐ Time
- ☐ Fuel Gas Flow Kft3Hr
- ☐ Fuel Ratio Ft3Ton
- ☒ Fuel Gas Volume Kft3

Slicers Vertical

Slicers Horizontal

Report Filter

Column Labels

Process

Row Labels

Σ Values

Plant

Equipment

Sum of Fuel Gas...

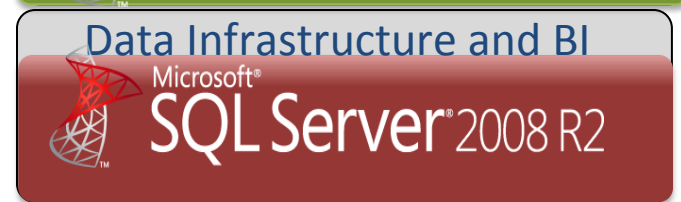
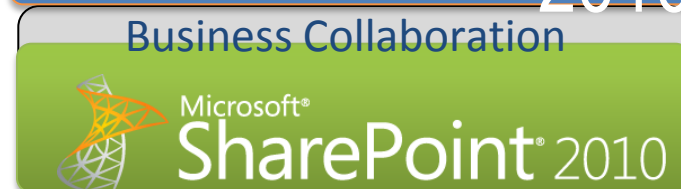
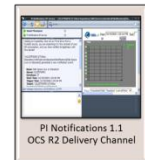
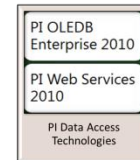
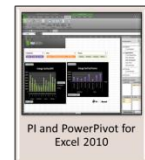
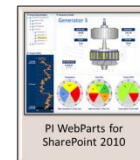
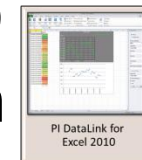
Keeping Insights Up to Date



Refreshing Data in SharePoint 2010

SharePoint can refresh the data from the specified data sources over the Web, in the cloud, from internal databases, PI System 2010, Excel files, and any other location with network connectivity.

- Dimensions and Facts
 - PI Asset Framework (PI Server 2010)
- Datasets for BI Data Extraction
 - PI OLEDB Enterprise 2010 (PI for Office 2010)
- Desktop Analysis and Cube Configuration
 - Microsoft PowerPivot for Excel 2010
- Enterprise Accountability
 - Microsoft PowerPivot for SharePoint 2010
 - Microsoft SharePoint 2010
 - Microsoft SQL Server 2008 R2



Simple

- ➔ Simple naming and versioning
- ➔ Single PI Server package
- ➔ Aligned release schedule
- ➔ Organize PI data around assets

Relevant

- ➔ Migration of existing asset definitions
- ➔ Integration of PI with business systems
- ➔ New ways to analyze data

Collaborative

- ➔ Use the tools you already know
- ➔ Business Intelligence for the masses
- ➔ Easily share insights with others