

Portal Strategy and RtPM

Dr. J. Patrick Kennedy, CEO
OSIsoft Inc.
San Leandro CA 94577

RtPM

345_77

4401_3245

0216

4401_3245

0216

41_77_9



What is Strategy?

- **Michael E. Porter**
- **KPI/Balanced Scorecard/Etc are OE plans**
- **Strategy Required New Activities**
- **Software is by its nature Strategic**
- **Strategic Activity Changes Fundamental Economic Drivers of the Industry**
- **Dell, Walmart Examples**
- **Abitibi Consolidated Example**

What is the Big Deal?

➤ **First of All – Why Move to a Portal**

- Portals Recaptures the Business User
- Broader Scope
- Easy Navigation, World Standard

➤ **Features of a Portal**

- Targeting (Display based on Audience Profiling)
- Delegation (Secure Delegation of Admin Authority e.g. portal\pat)
- Single Sign-On - HUGE

What is the Big Deal?

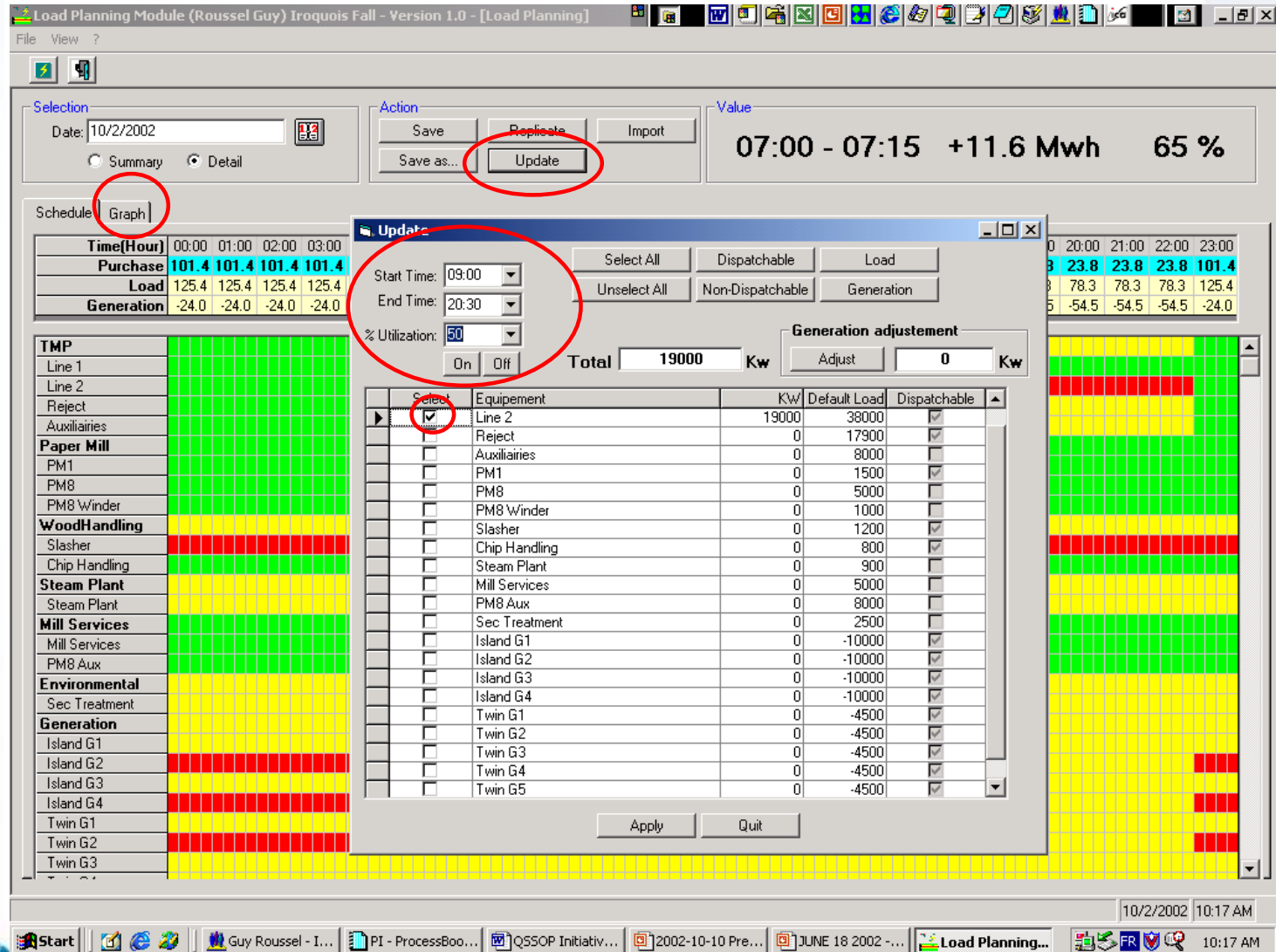
➤ Features of a Portal (con't)

- Personalization
- Data Source Aggregation (Crawl and Index the Web for Info)
- Search and Index Sites
- Team Site Security
- Loosely Coupled Applications

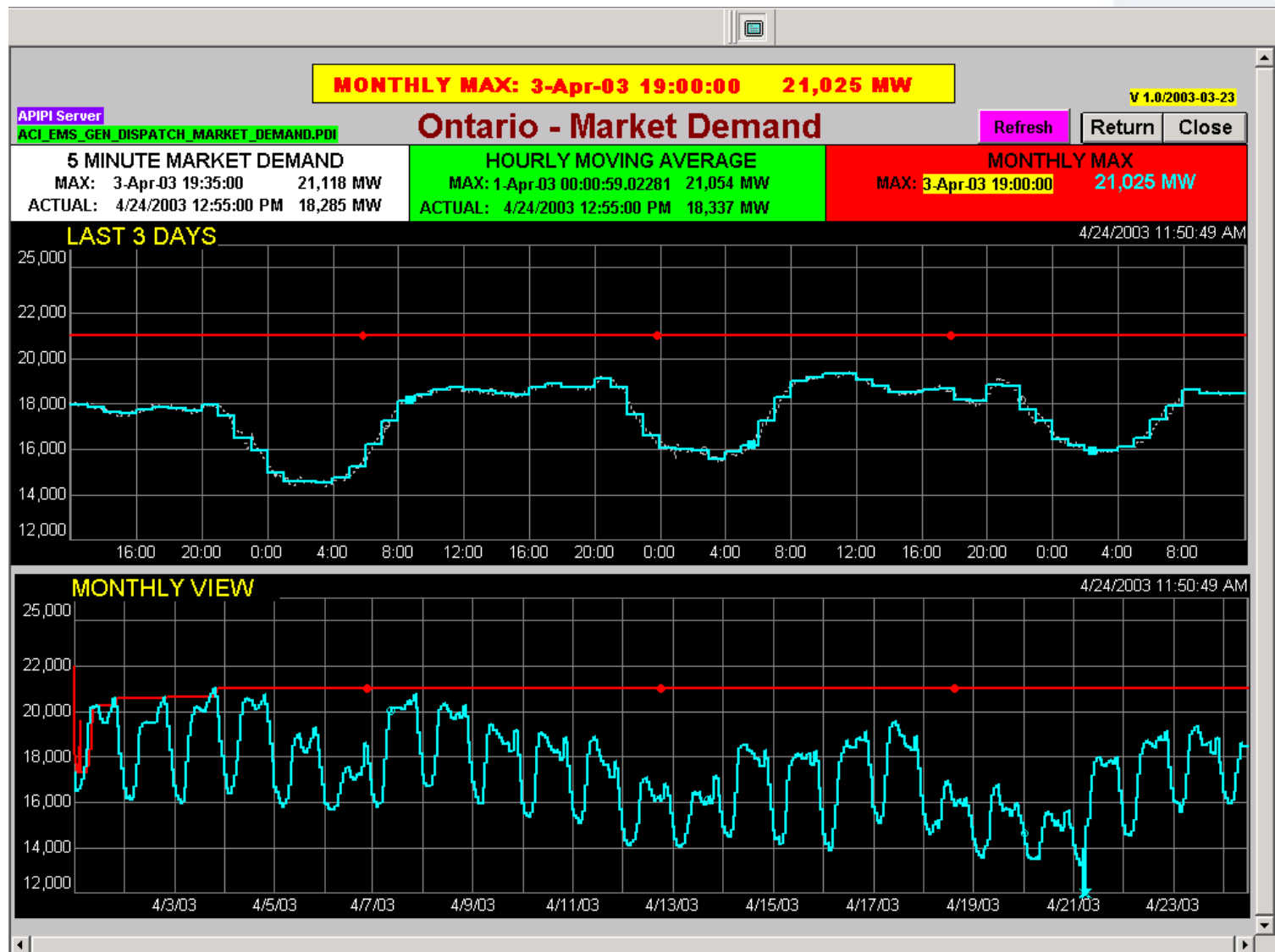
Integration with you PC

- **Many Apps Use the LAN (e.g. Excel)**
- **Real Time Functions Are Strategic**
- **Portal Functions From Microsoft**
 - ADAM Security
 - Web Parts
 - Integration with Office
 - Team Sites vs. Portal
- **MS Office SharePoint Portal Server is Next Generation PC**
- **Example of Strategic Use – Abitibi Consolidated**

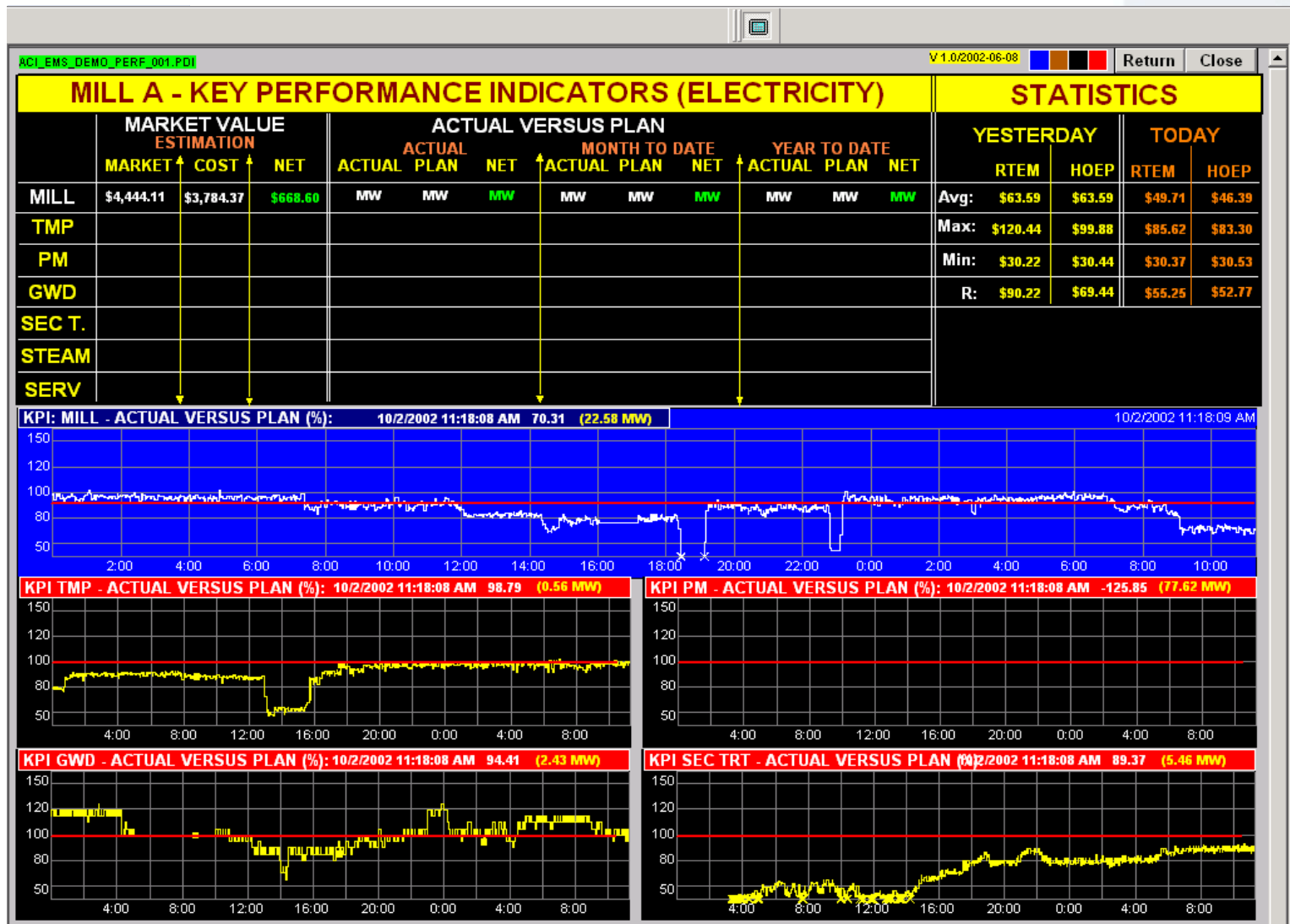
Power Demand for Mills



Setting Monthly Demand



Actual Versus Plan



Abitibi Application

- **Strategic But Built By Engineering**
 - All VBA
 - Tightly Connected via LAN
 - No Browser
 - Access to Web via HTML
- **Wrong? Absolutely Not**
 - \$77K for \$1000K/yr

Next Generation

- **Use Portal to Collaborate Between Business and Technical**
- **Too Hard to Create/Support Abitibi Style Applications**
- **Could Change the Fundamental Economics of the Industry – Make Power or Make Paper**

Collaboration is Key

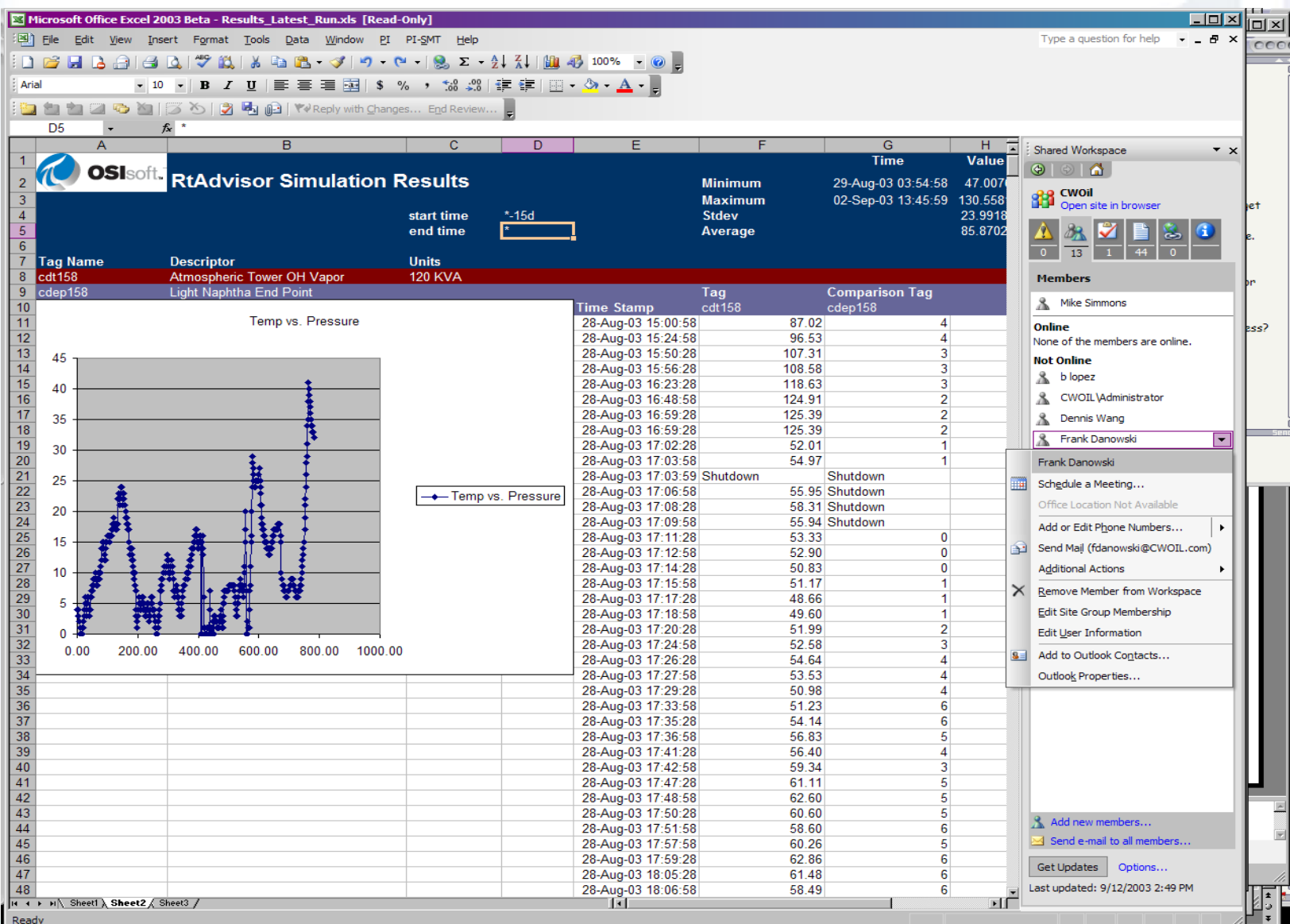
➤ Team Site vs. Portal

- Presence
- Group of Federated Sites
- ADAM Security
- Best Shown By Scenario

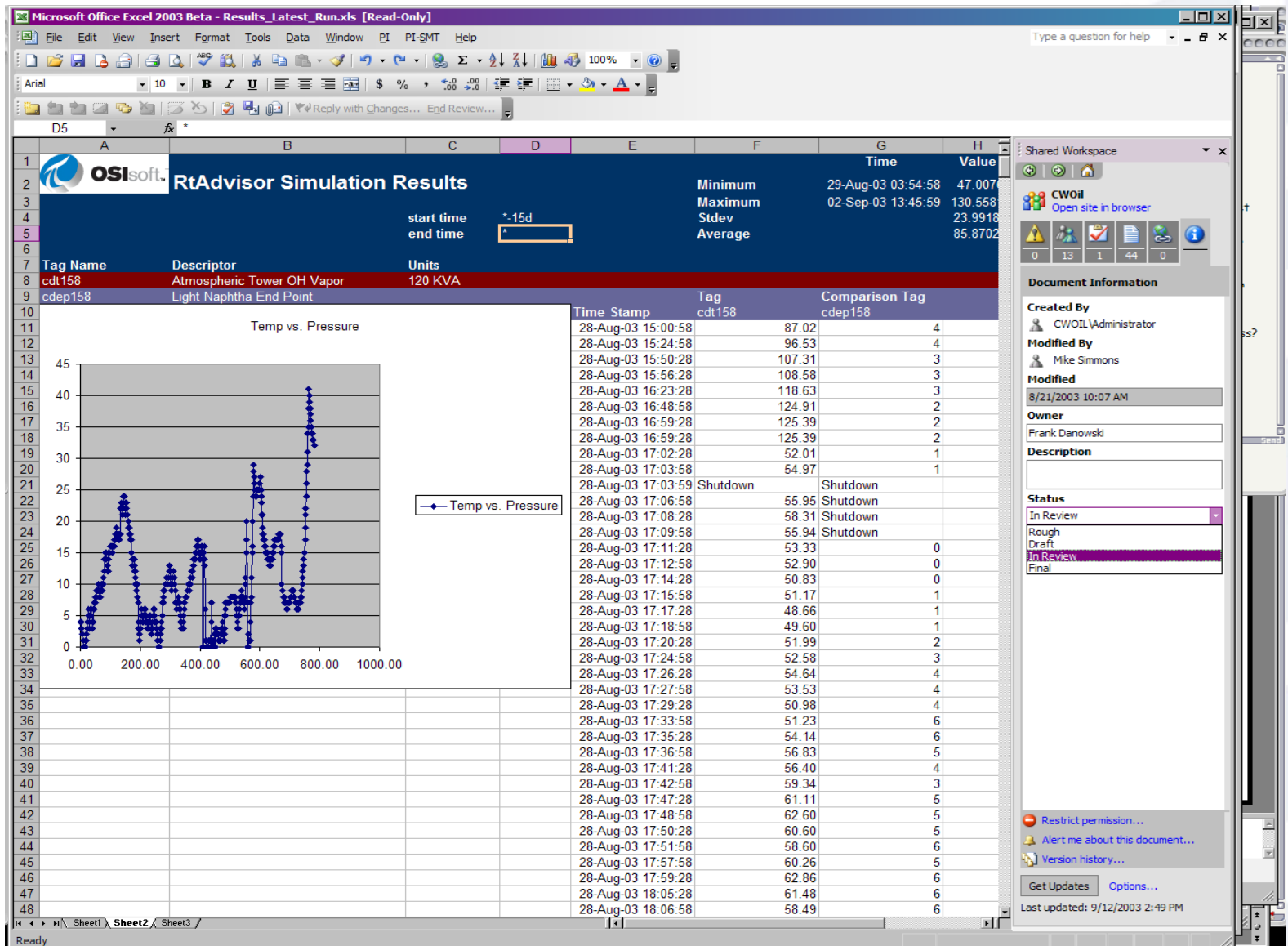
➤ Microsoft Office 2003

- Total Integration

“Presence” Integration



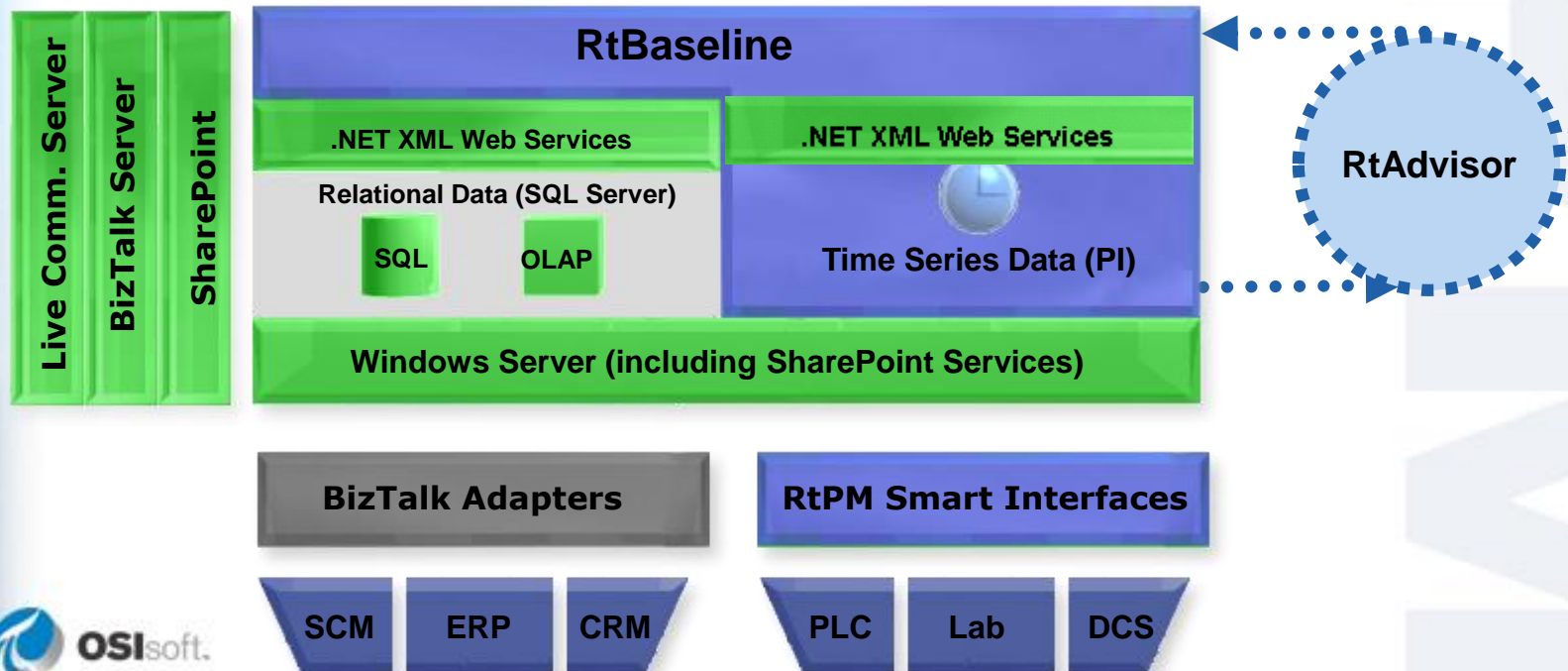
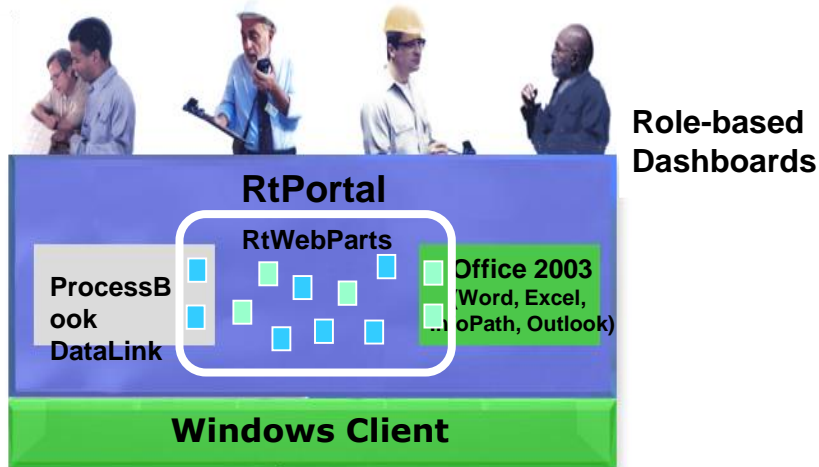
SharePoint Integration



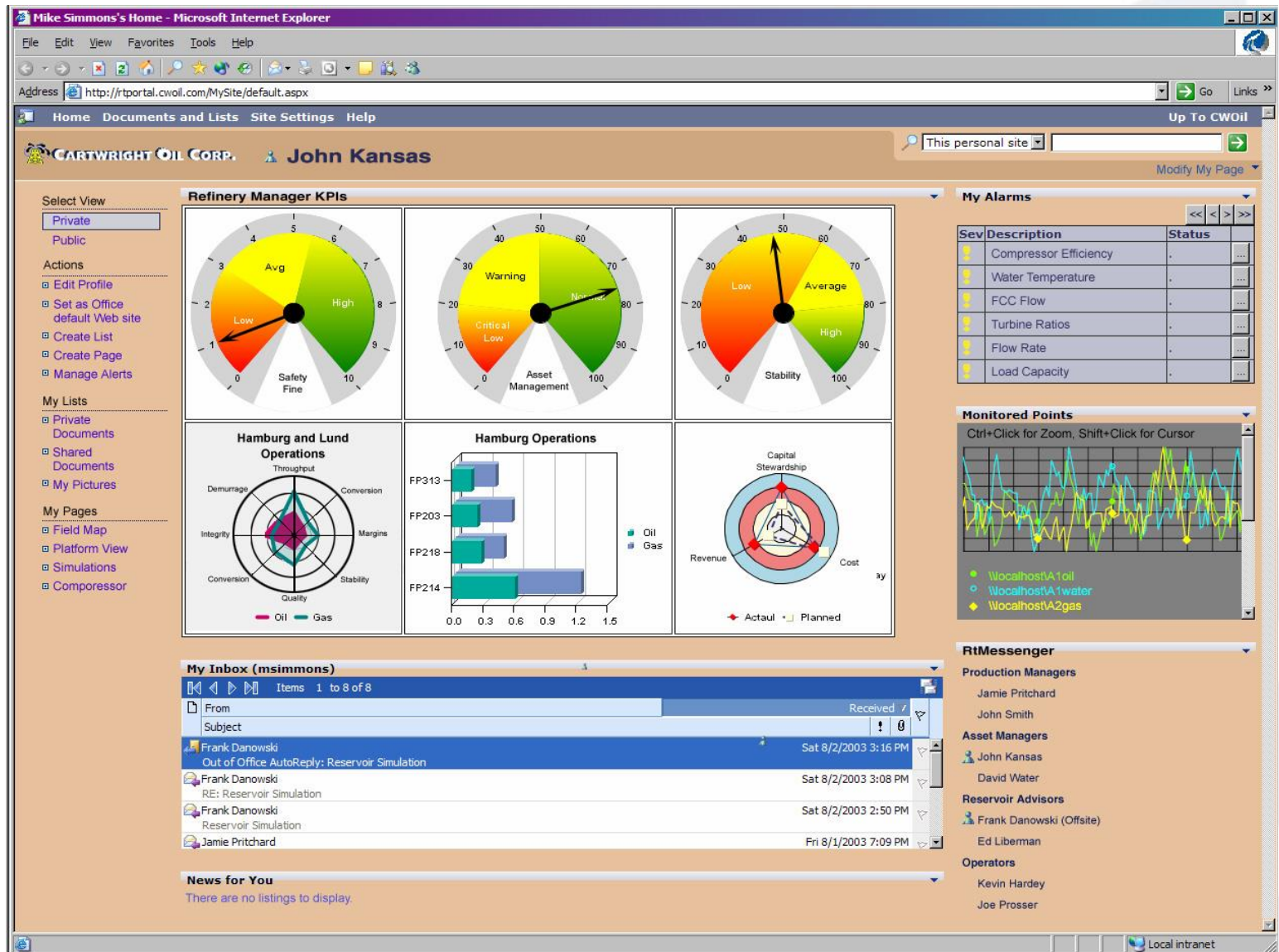
Real Time Portal

- **Change by Event**
- **Notifications**
- **Trending and Analysis**

Put it Together



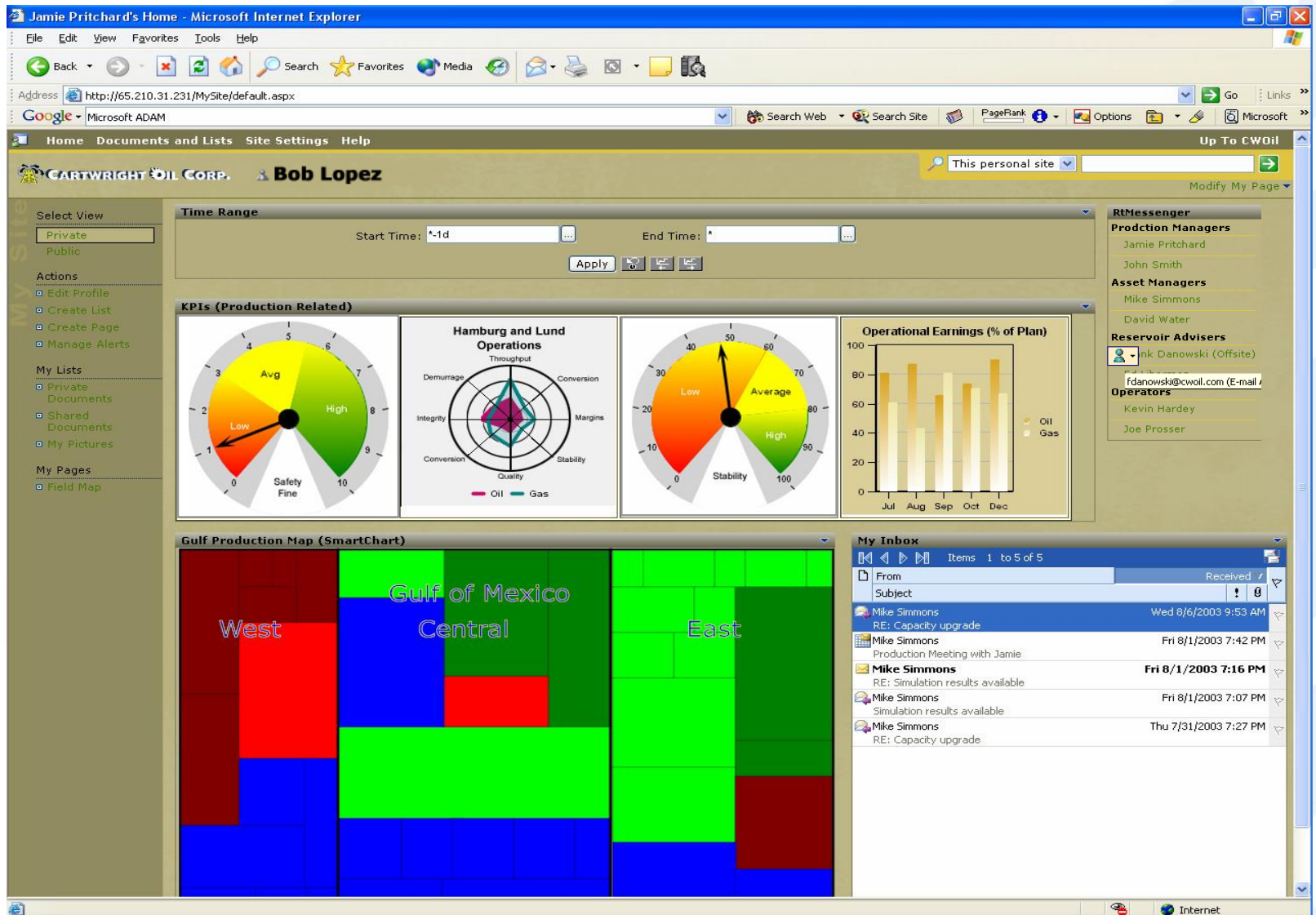
Real Time and Office Parts



Collaborating Between PC and Web

The screenshot illustrates a dual-monitor workstation setup for process simulation and web collaboration. The primary monitor displays the **PI - ProcessBook - [PLATFORM212.PDI]** application, which features a detailed process flow diagram of a **MAIN COLUMN BOTTOM**. Key components include a **FEED FROM REACT**, a **40W STEAM** input, and various output streams labeled with temperatures (e.g., 82.92 DEG F, 83 DEG F) and pressures (e.g., 83 MBPD). The secondary monitor shows a **Microsoft Internet Explorer** window displaying a **Web Part Page - Microsoft Office Online**. The browser window includes a **Getting Started** section with links to **Microsoft Office Online** and a **PlatformView** page. The **PlatformView** page contains a **My Lists** section with links to **Private Documents**, **Shared Documents**, and **My Pictures**. It also features a **My Pages** section with links to **PlatformView**, **Field Map**, **Compressor**, and **AssetTeam1**. The **PlatformView** page includes a **Platform View** section with a photograph of an offshore oil platform and a **Platform Operations** section with a detailed process flow diagram of a **GULF - FP212** unit. The **PlatformView** page also includes a **Equipment** section with a list of equipment including **Compressor1**, **Compressor2**, **Pump 1**, **Separator 1**, and **Pump 2**. The taskbar at the bottom shows the **Start** button, the **Web Part Page - Microsoft Office Online** window, and the **PI - ProcessBook - [PLATFORM212.PDI]** window. The system clock indicates the time is **4:38 PM**.

Office Integration



Office Integration

Jamie Pritchard's Home - Microsoft Internet Explorer
 File Edit View Favorites Tools Help
 Back Forward Stop Home Search Favorites Media Print
 Address http://65.210.31.231/MySite/default.aspx
 Google Microsoft ADAM Search Web Search Site PageRank Options Microsoft

Home Documents and Lists Site Settings Help Up To CWOil
 CARTWRIGHT OIL CORP. Bob Lopez This personal site Modify My Page

Select View: Private Public
 Actions: Edit Profile, Create List, Create Page, Manage Alerts
 My Lists: Private Documents, Shared Documents, My Pictures
 My Pages: Field Map

Time Range
 Start Time: *-1d End Time: * Apply

KPIs (Production Related)
 Avg Low High Safety Fine
 Hamburg and Lund Operations: Demurrage, Throughput, Conversion, Integrity, Margins, Conversion, Quality, Stability
 Operation: Low Average High Stability

Gulf Production Map (SmartChart)
 West Central East Gulf of Mexico

RtMessenger
 Production Managers: Jamie Pritchard, John Smith
 Asset Managers: Mike Simmons, David Water
 Users: Mike Simmons (Offsite)

fdanowski@cwoil.com (E-mail Address Not Verified) is Online
 Schedule a Meeting...
 Office Location Not Available
 Add or Edit Phone Numbers...
 Send Mail (fdanowski@CWOIL.com)
 Send Instant Message...
 Additional Actions
 Add to Outlook Contacts...
 Outlook Properties...

My Info
 Items: 1 to 5 of 5
 From: Mike Simmons
 Subject: RE: Capacity upgrade
 Received: Wed 8/6/2003 9:53 AM
 From: Mike Simmons
 Subject: Production Meeting with Jamie
 Received: Fri 8/1/2003 7:42 PM
 From: Mike Simmons
 Subject: RE: Simulation results available
 Received: Fri 8/1/2003 7:16 PM
 From: Mike Simmons
 Subject: Simulation results available
 Received: Fri 8/1/2003 7:07 PM
 From: Mike Simmons
 Subject: RE: Capacity upgrade
 Received: Thu 7/31/2003 7:27 PM

WW Access

Margaret Gallagher's Home - Microsoft Internet Explorer

File Edit View Favorites Tools Help

Back Forward Stop Search Favorites Media Print Mail

Address http://192.168.222.33/MySite/default.aspx Go Links

Home Documents and Lists Site Settings Help

CARTWRIGHT OIL CORP. Margaret Gallagher This personal site

Select View

Private
Public

Actions

Edit Profile
Create List
Create Page
Manage Alerts

My Lists

Private Documents
Shared Documents
My Pictures

My Pages

EuropeMap
Asia Map
North America Map
Global KPI
Platform KPI

MSNBC News

- 8 Iraqi police, 2 GIs killed in Iraq
- Bush to address U.N. this month
- Voice on tape 'probably' bin Laden
- Israel reiterates Arafat to be expelled
- Bush to thank to Iraq shock troops

Currency Exchange Rates

Currency Last Trade	U.S. \$	Yen 12:59pm	Euro 1:09pm	Can \$ 1:09pm	U.K. £ 1:09pm	Aust \$ 1:09pm	SFranc 1:09pm
U.S. \$	1	0.008519	1.131	0.7338	1.606	0.663	0.7268
Yen	117.4	1	132.8	86.15	188.5	77.83	85.32
Euro	0.8839	0.007529	1	0.6486	1.419	0.586	0.6424
Can \$	1.363	0.01161	1.542	1	2.188	0.9035	0.9905
U.K. £	0.6228	0.005305	0.7046	0.457	1	0.4129	0.4527
Aust \$	1.508	0.01285	1.706	1.107	2.422	1	1.096
SFranc	1.376	0.01172	1.557	1.01	2.209	0.9122	1

Time Range

Start Time: End Time:

*-1d

Apply

Euro/Africa Region

Average 50
Low 20
High 80
95.0347

America Region

Average 50
Low 20
High 80
44.99101

Australia/Asia Region

Average 50
Low 20
High 80
95.0347

Crude

Europe/Africa
Asia/Australia
North America
Actual Planned

Gasoline

Europe/Africa
Asia/Australia
North America
Actual Planned

Diesel

Europe/Africa
Asia/Australia
North America
Actual Planned

Product

\$ per Gallon

Spot
7 Day Avg
30 Day Avg

Premium Gasoline Diesel

Crude Oil

\$ per Bbl

Spot
7 Day Avg
30 Day Avg

Brent Crude West Texas Int

Capacity and Availability

Bbls Per Day

Australia/Asia
North America
Euro/Africa

My Inbox

Items 1 to 1 of 1

Notification

Address http://65.210.31.231/personal/msimmons/Shared%20Documents/AlertDetail.aspx?Tag=\\localhost\\pialm_01 Go

Home Documents and Lists Site Settings Help Up To CWOil

AlertDetail Modify Shared Page ▾

My Lists

- Private Documents
- Shared Documents !
- My Pictures

My Pages

- Field Map
- Platform View
- Simulations
- Compressor
- Trader

Opportunity Alert ▾



Commercial Team ▾

Production Managers

- Jamie Pritchard
- John Smith

Asset Managers

- Mike Simmons
- David Water

Reservoir Advisers

- Frank Danowski (Offsite)
- Ed Liberman

Operators

- Kevin Hardey
- Joe Prosser

Alarm Detail ▾

- Severity: **High**
- Location: Western Europe
- Source: Trading System (Bob Lopez Entry)
- DESCRIPTION**

Western Europe Region has a sudden shortage of low-sulphur diesel due to shut-downs of DHT Units.

SUGGESTED LINKS

[Refinery Map](#)

RtAdvisor Alert ▾

! RtAdvisory

An opportunity exists to supply a customer with 40,000 tons of low sulphur diesel. Hamburg Joint Venture refinery can manufacture the required diesel.

RtAdvisor recommends running additional optimization scenario to ensure that the amount and specification can be met.

Contract History ▾

Type	Name	Modified By
	Maintenance_Record_C12663	Mike Simmons
	Maintenance_Record_C12553	Mike Simmons
	Maintenance_Record_C12563	Mike Simmons
	Maintenance_Record_C12565	Mike Simmons

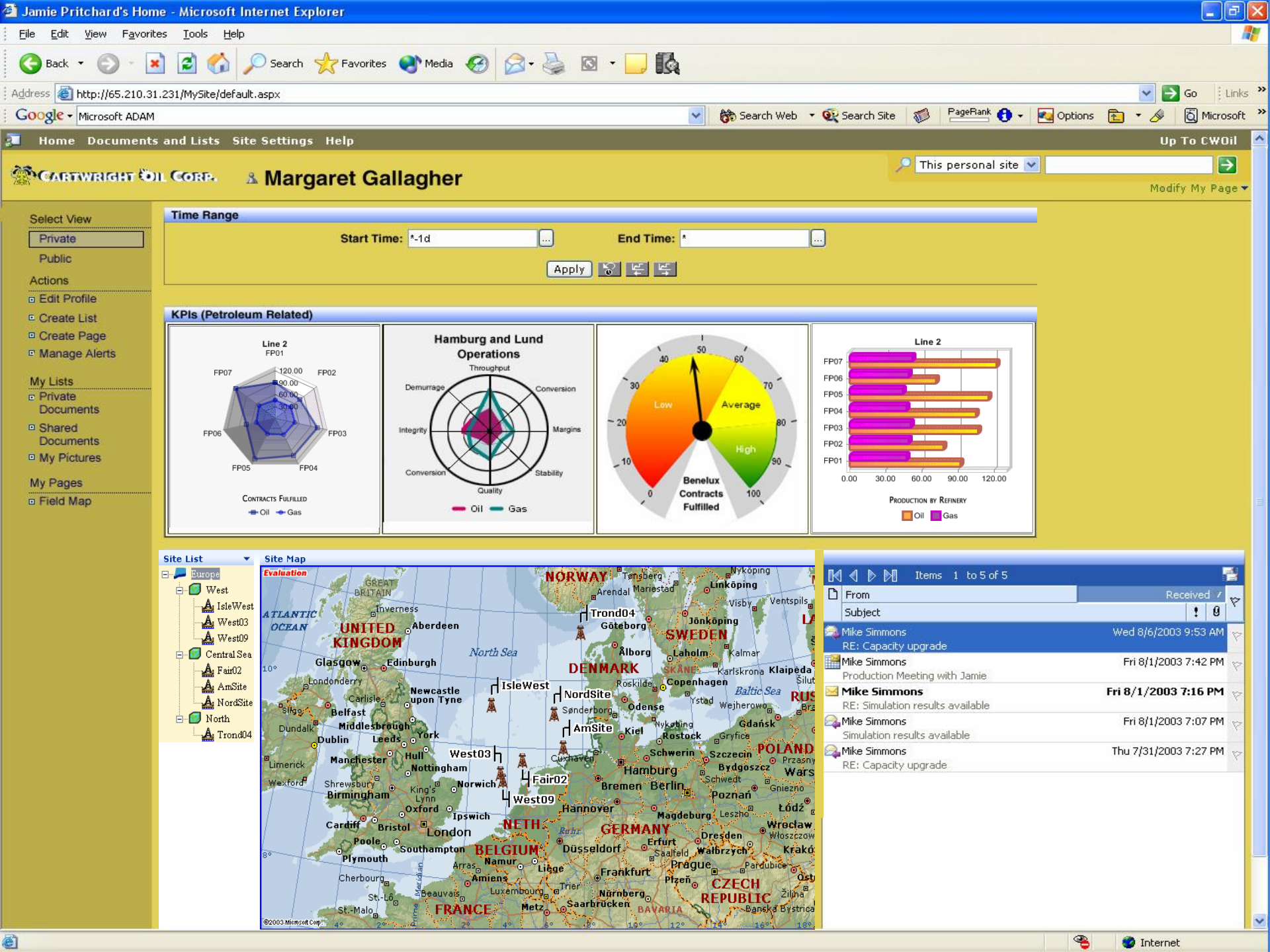
[Add new document](#)

InterPart Communication

➤ Standard Interfaces

- iRowProvider
- iCellProvider
- iRowConsumer
- iCellConsumer

➤ Allow Configurable Interaction





Platform View

My Lists

- Private
- Documents
- Shared
- Documents
- My Pictures

My Pages

- Field Map
- Platform View
- Asset Manager 1
- Simulations
- Compressor

FP212

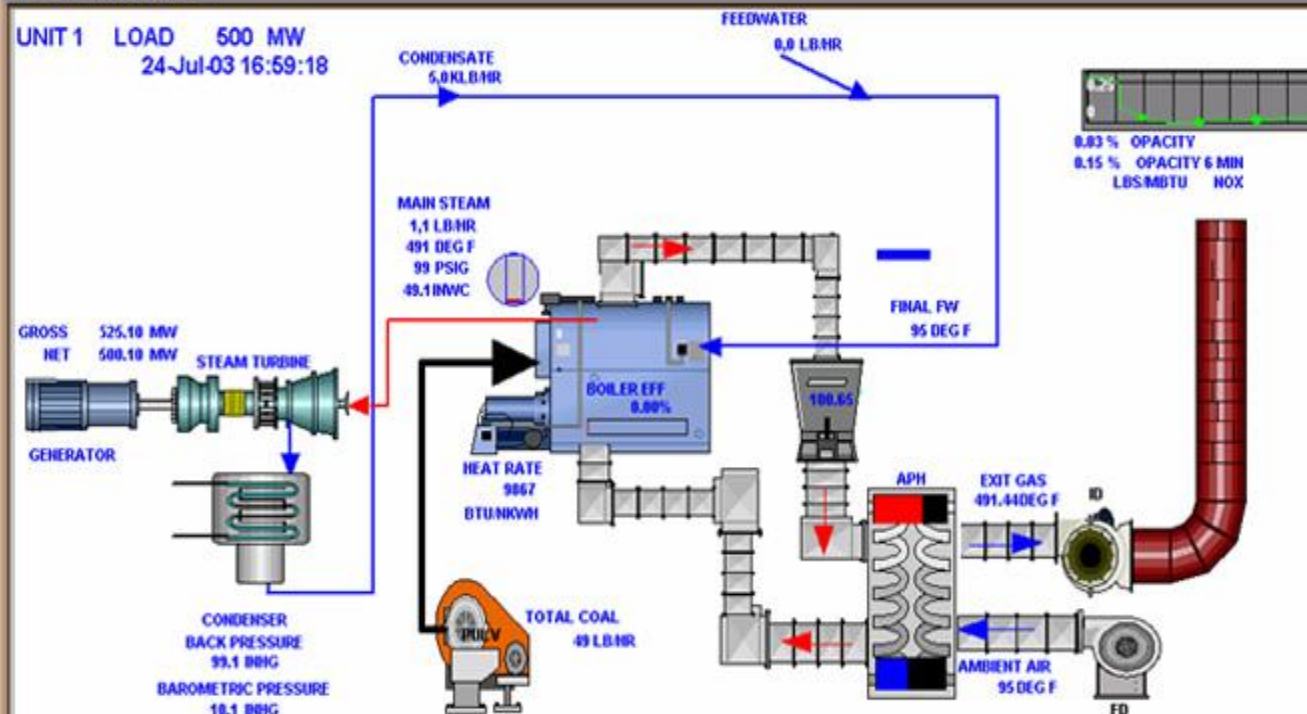


Platform Assets

- FCC17
 - Compressor1
 - Compressor2
 - Pump1
 - Separator1
 - Pump2
 - Compressor3
 - Valve1
 - Valve2
 - valve3
 - valve4
- FCC18
 - Valve A
 - Valve B
- FCC19
- FCC20

FP212 Operations

UNIT 1 LOAD 500 MW
24-Jul-03 16:59:18



[Back to San Leandro](#)

Maintenance Records

Type Name

- Maintenance_Record_C13841 **NEW**
- Maintenance_Record_C12663 **NEW**
- Maintenance_Record_C11475
- Maintenance_Record_C10032

[Add new document](#)

Modified by:

- Mike Simmons
- Mike Simmons
- Mike Simmons
- Mike Simmons

Web Part Page - Microsoft Internet Explorer

File Edit View Favorites Tools Help

Address <http://65.210.31.231/personal/msimmons/My%20Pages/Compressor.aspx> Go Links

Home Documents and Lists Site Settings Help Up To CWOil

Compressor

Modify Shared Page

My Lists

- Private Documents
- Shared Documents
- My Pictures

My Pages

- Field Map
- Platform View
- Asset Manager1
- Simulations
- Compressor

Time Range

Start Time: End Time:

Apply

Real-time Platform Data (Auto Update)

Tag Name	Time	Value
\\localhost\B8gas	8/1/2003 10:12:06 PM	54.14346
\\localhost\B8GOR	8/1/2003 10:04:00 PM	0.239317
\\localhost\SndFitP1	8/2/2003 09:32:41 PM	49.96232
\\localhost\SndFitP2	8/1/2003 08:56:43 PM	17.88383
\\localhost\SndFitR1	8/1/2003 07:23:17 PM	2316.63

Gas Throughput

Ctrl+Click for Zoom, Shift+Click for Pan

- Wlocalhost\SndFitR1
- Wlocalhost\SndFitR2

Safety

New safety issues

Maintenance Records

Type Name	Modified By
Maintenance_Record_C12663	Mike Simmons
Maintenance_Record_C12553	Mike Simmons
Maintenance_Record_C12563	Mike Simmons
Maintenance_Record_C12563	Mike Simmons

Image Web Part

BOP-A

Inflow Rates

Ctrl+Click for Zoom, Shift+Click for Pan

- Wlocalhost\SINUSOID
- Wlocalhost\SINUSOIDU

Friction

Ctrl+Click for Zoom, Shift+Click for Pan

- Wlocalhost\A1oil
- Wlocalhost\A1water

RtMessenger

Production Managers

- Jamie Pritchard
- John Smith

Asset Managers

- John Kansas
- David Water

Reservoir Advisors

- Frank Danowski (Offsite)
- Ed Liberman

Operators

- Kevin Hardey
- Joe Prosser

Error on page.

Trusted sites

X-Doc Forms

Address <http://192.168.222.31/Simulationrequest/Forms/AllItems.aspx> Go Links

CARTWRIGHT OIL CORP. My Site Site Settings Help

Home Topics News Sites

CWOil
SimulationRequest

All sources

Current Location
Home
• Topics
• News
• Sites

Select a View
All Forms
Explorer View
My Recent Items
Alert me
Export to spreadsheet
Modify settings and columns

Fill Out This Form | Upload Form | New Folder | Filter | Edit in Datasheet

Type	Name	Modified	Modified By
	Simulation_Launch_1012 NEW	7/30/2003 7:53 PM	CWOIL\Administrator
	Simulation_Launch_1013 NEW	7/30/2003 8:24 PM	CWOIL\Administrator

Opens Rich Client InfoPath

Web Services

(Design) template - Microsoft Office InfoPath 2003

File Edit View Insert Format Tools Table Help

Preview Form ABC Insert Verdana 10 B I U

CARTWRIGHT OIL CORP.

Simulation Request

Dates (Simulation Parameters):
Start Date:
End Date:

Prices (Brent Crude per barrel):
Spot Price:
Forward 1 Month:
Forward 3 Months:

Throughput (Gallons per day):
Compressor 1 Throughput:

Data Source

Layout Controls Data Sources Views

Work with the data source:

- queryFields
- dataFields
 - my:SpotPrice
 - string
 - my:Forward1Month
 - string
 - my:Forward3Months
 - string
 - my:Compressor1Throughput
 - string
 - my:Compressor2Throughput
 - string
 - my:Compressor3Throughput
 - string

✓ Show details
Add...
Help with the Data Source

Conclusions

- **Dramatic Changes Coming**
- **Connection between LAN (Office) and Portal Makes it Safe to Proceed**
- **Will have multiple Portals (e.g. SAP for ERP, Web Sphere for MRO)**
- **Orchestrated Loosely Coupled Business Processes will Change the Fundamental Drivers of the Industry via Collaboration**