

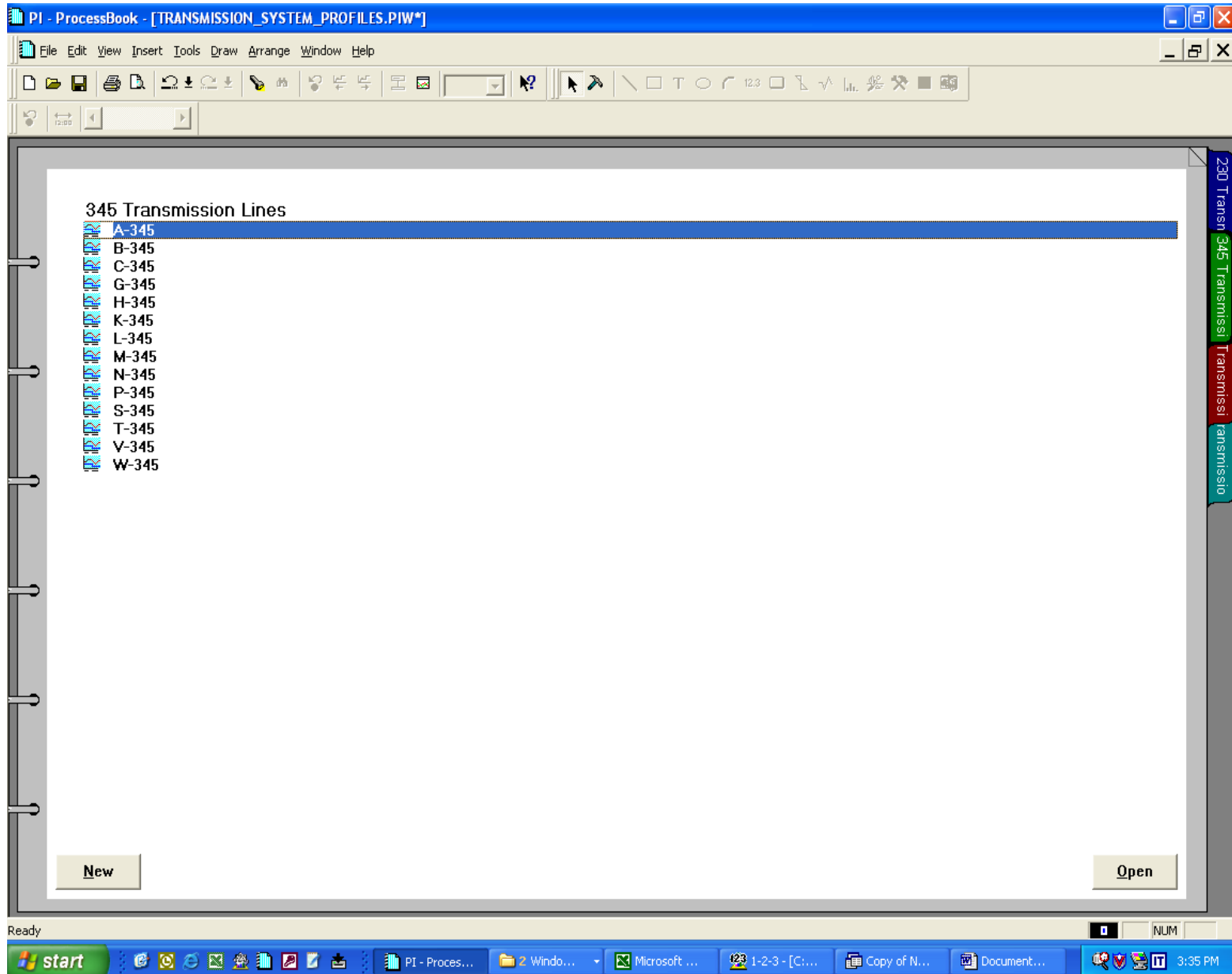
Summer / Winter Limit Selection For Transmission & Distribution Lines

Jerry Ayotte

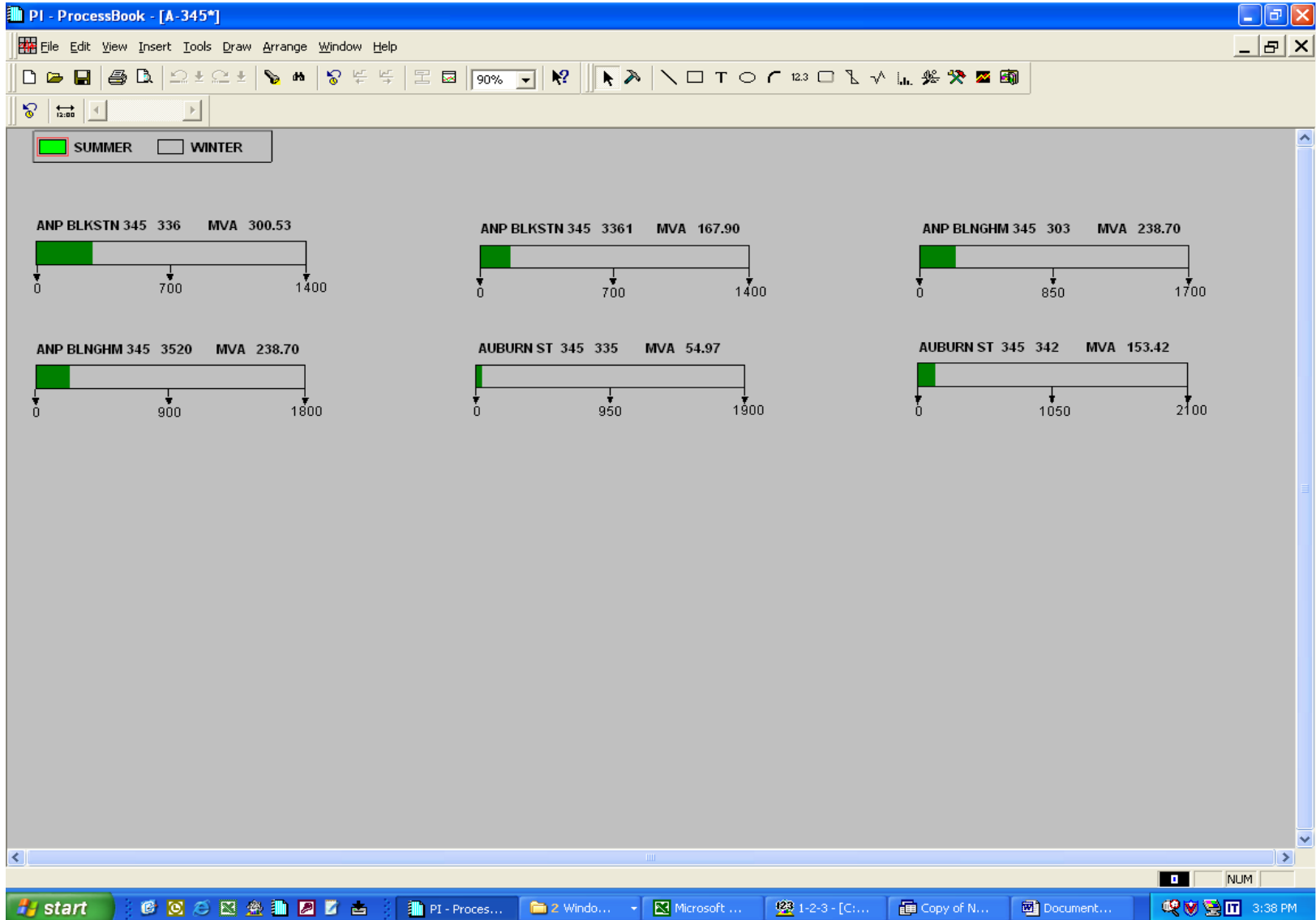
National Grid USA

Westborough Massachusetts

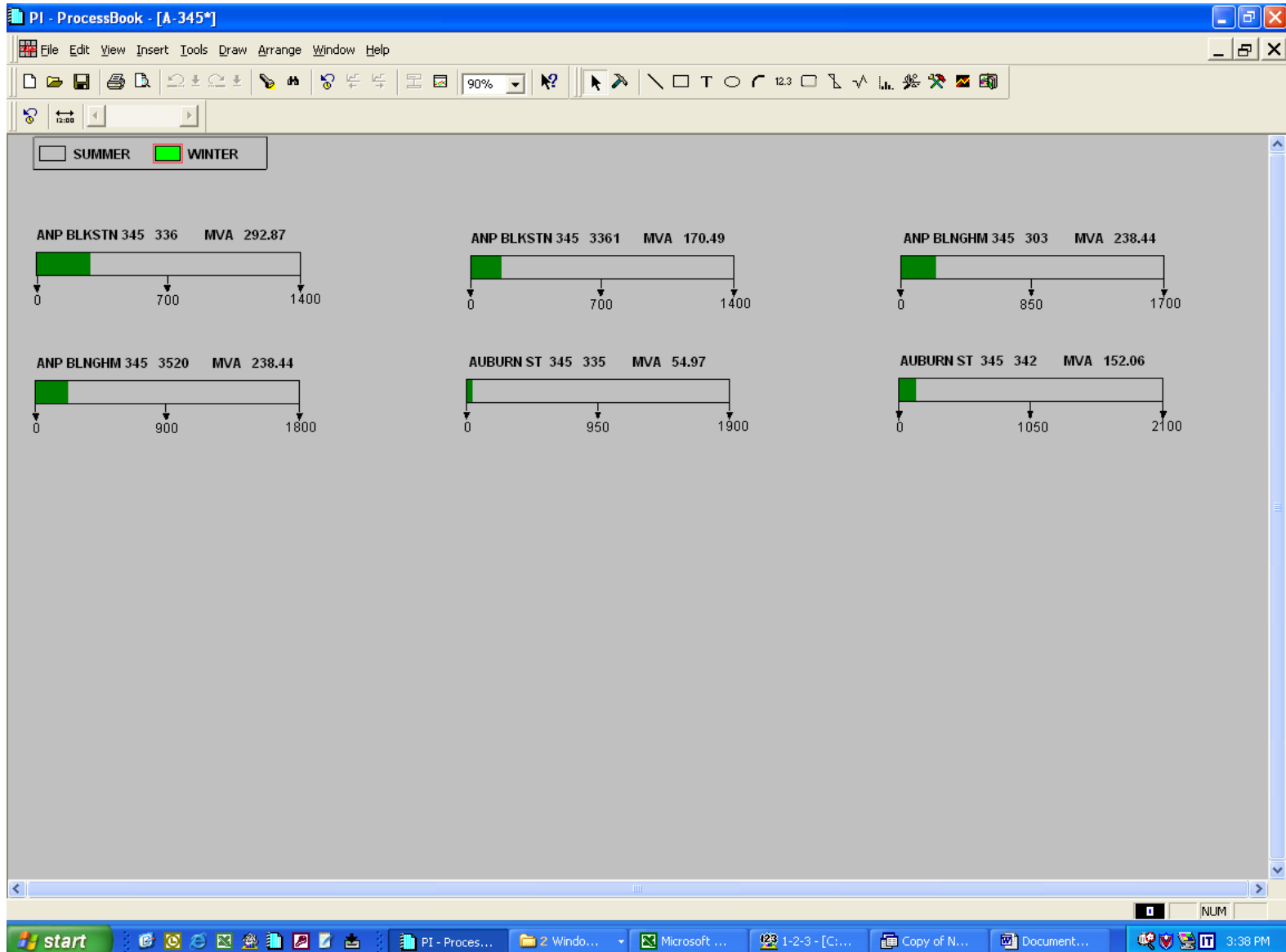
345 KV Line Selection Page



Transmission Line Summer Limits Selected



Transmission Line Winter Limits Selected



4 Level of Limits

Normal, LTE, STE, DAL

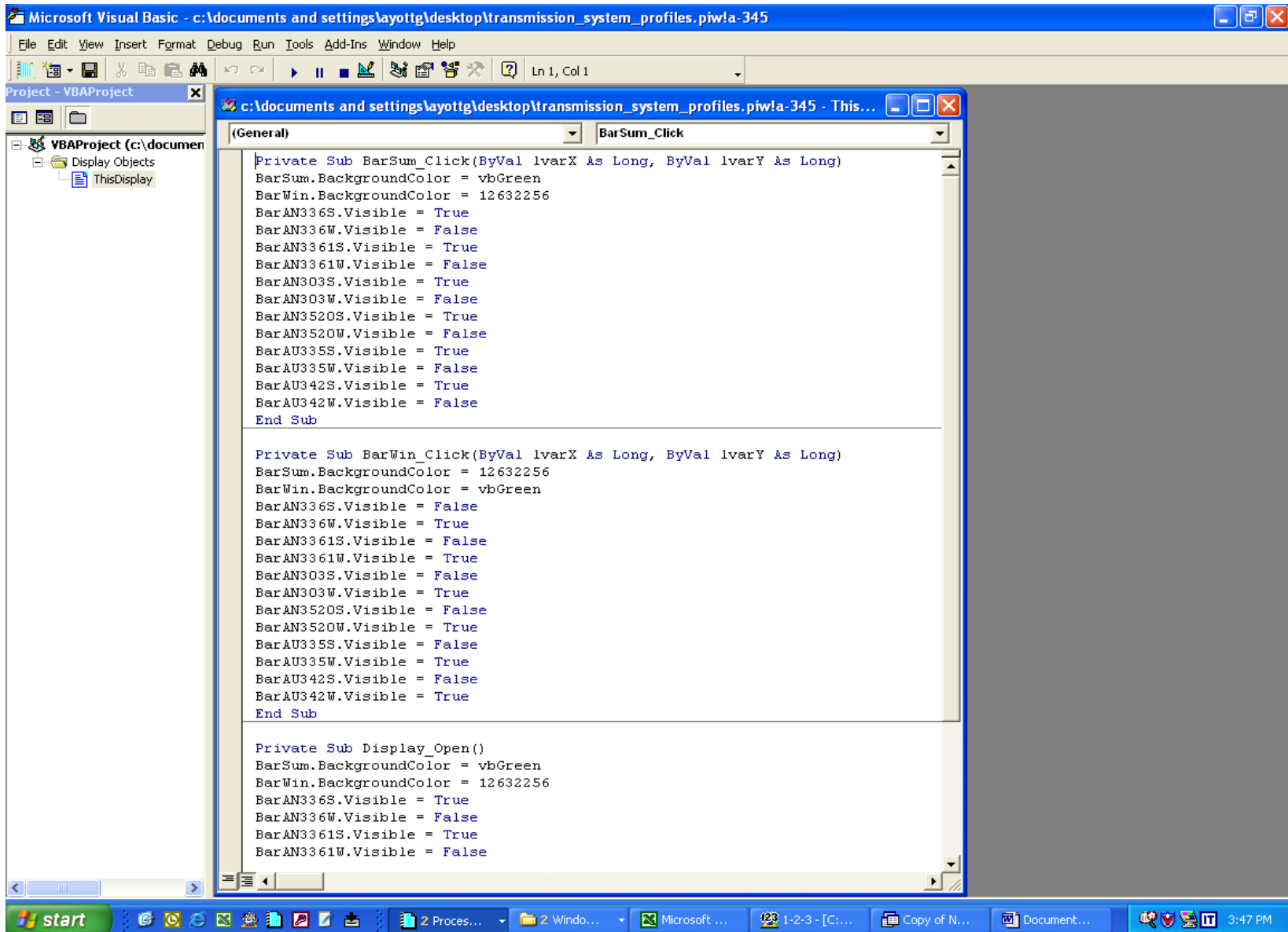
The screenshot displays the PI ProcessBook interface with a 'MultiState Symbol' dialog box open. The dialog is configured for the tag 'ANP BLKSTN 345 3361 MVA 167.63'. It shows 4 states with the following values and limits:

State	Value	Limit
1	> -50000	<= 1635
2		
3		
4		

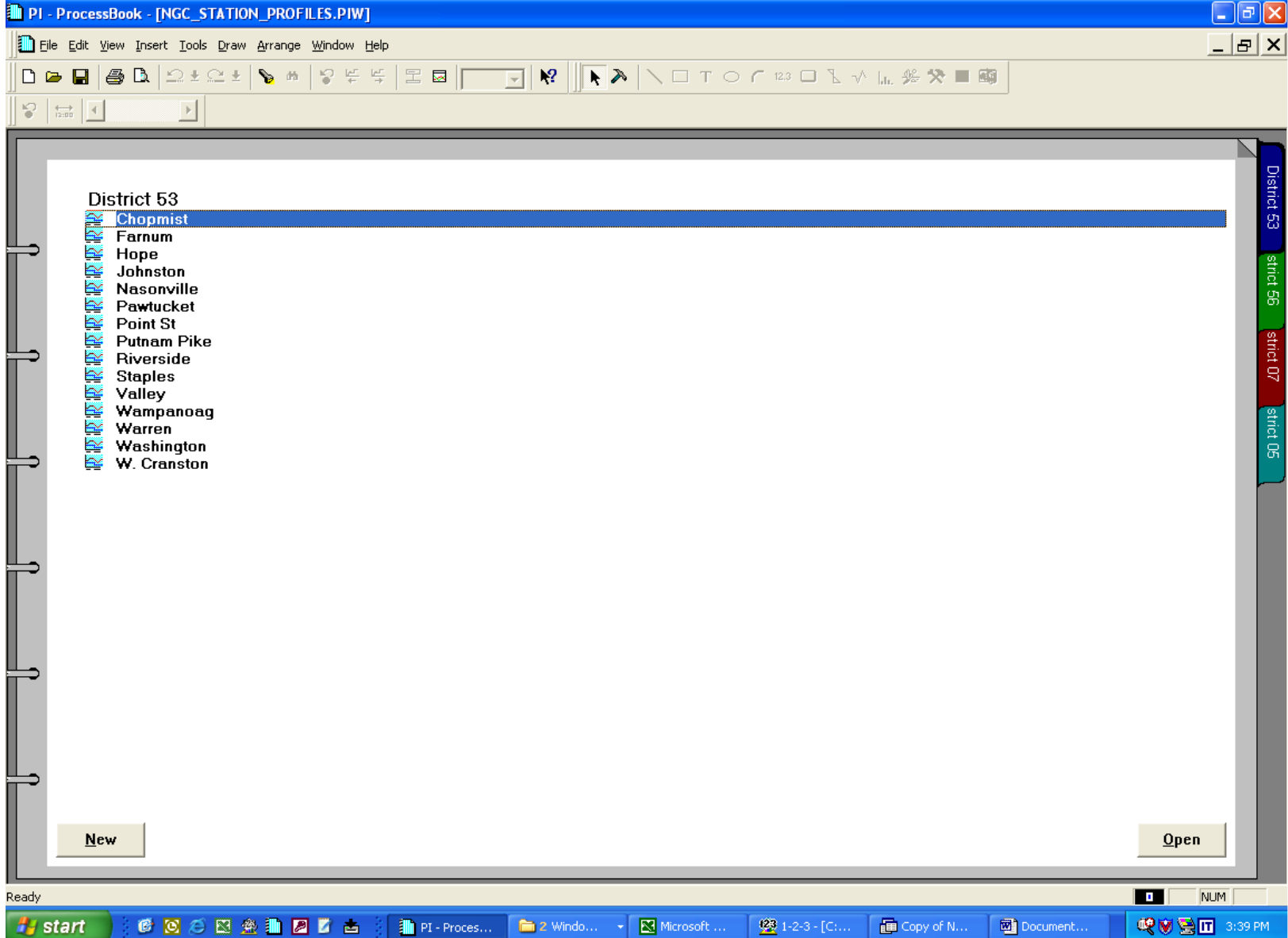
The dialog also includes a 'Color for Bad Data' dropdown set to 'None', checkboxes for 'Blink' (unchecked), and a 'Convert To Static' button. The background shows three bar charts for other tags: ANP BLKSTN 345 336 MVA 296.03, ANP BLNGHM 345 3520 MVA 237.68, and AUBURN ST 345 342 MVA 151.66. The interface includes a menu bar, a toolbar, and a Windows taskbar at the bottom.

VB Script

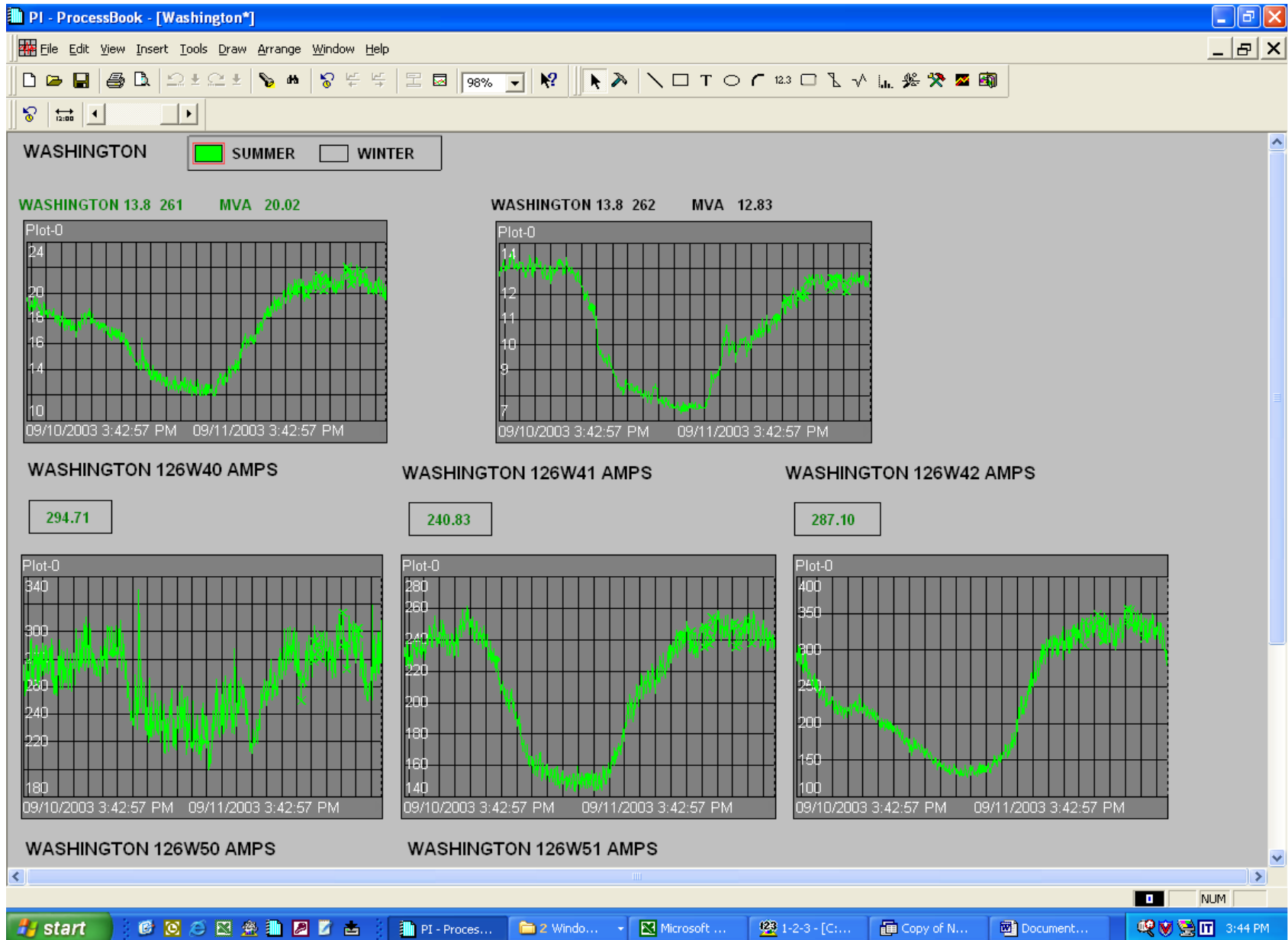
Default, Summer, Winter



Distribution Stations By Districts



Summer Limits Selected



Winter Limits Selected

