

2002

OSISOFT USERS CONFERENCE



**EXPANDING
THE POWER OF PI**

MONTEREY CALIFORNIA



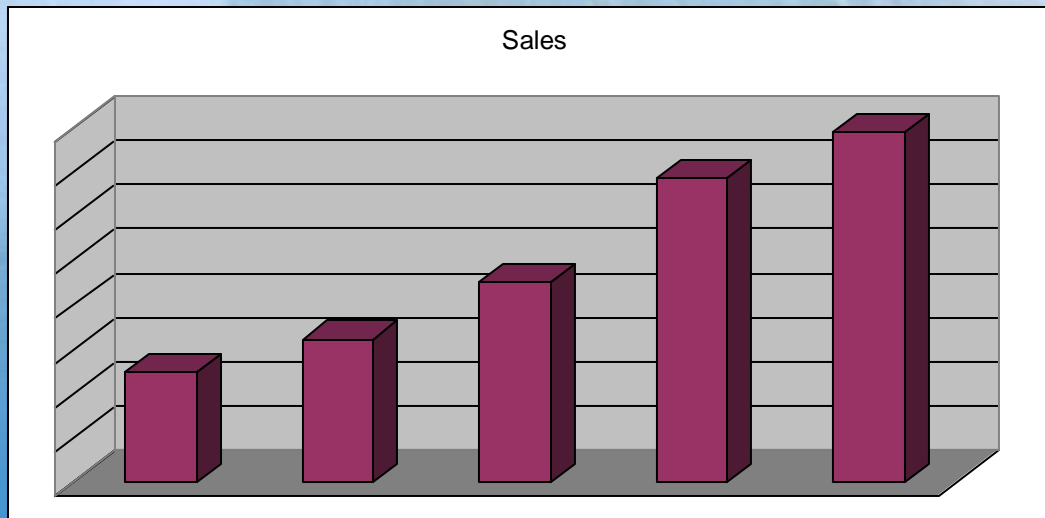
OSIsoft™

2001 Review 2002 Look-ahead

Topics

- 2001 Performance
 - Sales
 - Technically
- New products
- Marketing
- Surprise Topic

Year 2000 Results



2001 Performance

- Correcting for an accounting change our 2001 sales equaled 2000 sales
 - \$63 million in sales
- The environment
 - The industry as a whole was down

Sales by day for 2001



Sales by day vs. Target



Sales by day vs. Target

Day that we
started up
SAP



Good Things in 2001 Sales

- Sales growth in Europe
- Our best sales people continued to produce
- TSA – more timely quotes

Good things in 2001

Technically

- Validation of the UDS Concept
 - Chevron – PI-less PI
- MDB
 - Customers actually using it
 - Potential
- ACE

Product Releases

2001:

- May - PI-SDK 1.1
- July - PI-ProcessBook 2.2
- Sept - PI ACE 1.0
- Oct - PI-OLEDB 1.0
- Oct - PI SQC Alarm Manager 1.0
- Oct - PI-ODBC 1.2
- Oct - PI Interface Configuration Utility 1.0
- Oct - PI-SQC 1.1
- Dec - PI-DataLink 2.0
- Dec - PI-ActiveView 2.2
- Dec - PI SQC Alarm Manager 1.1

Product Releases

2002:

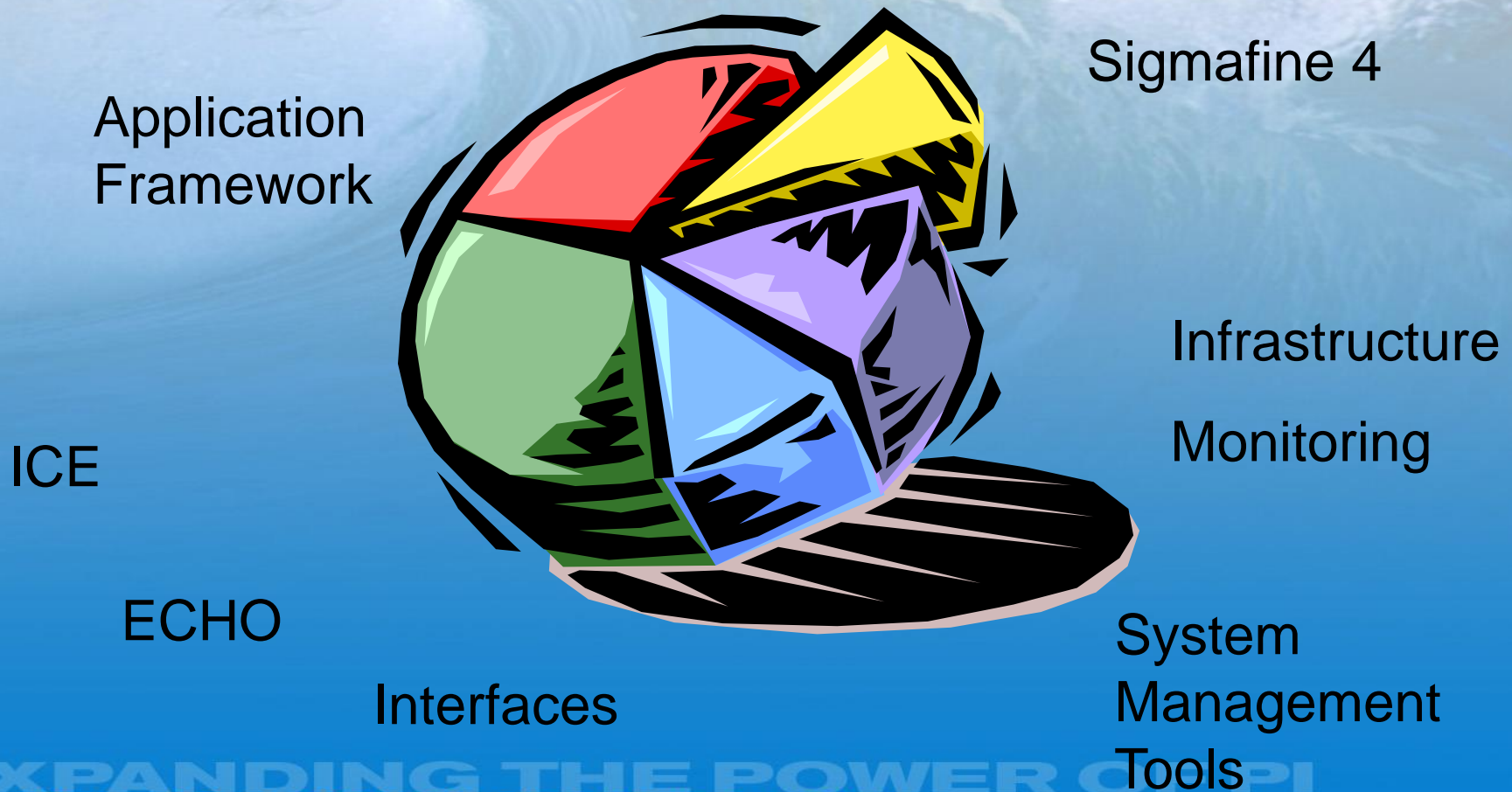
- Jan - RLINK PM 1.2
- Mar - PI-SMT 2.0
- Mar - PI 3.3 SR 1

And

- >20 Interfaces and COM Connectors

New Products for 2002

The Missing Pieces of PI



New Products & Initiatives

- ICE
- Application Framework
- “Preconfigured PI”
- IT Monitor for Infrastructure Monitoring
- PI Enhancements To Address FDA (21CFR Part 11) & EPA Regulatory Requirements

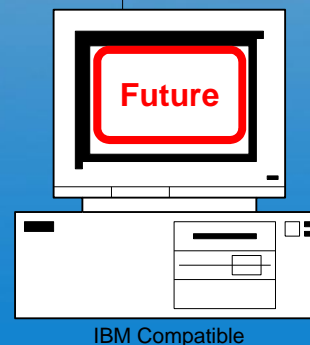
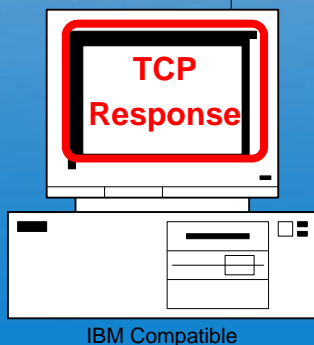
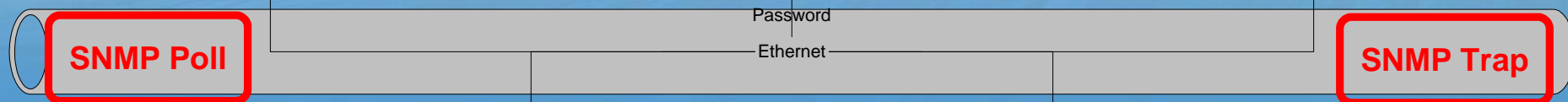
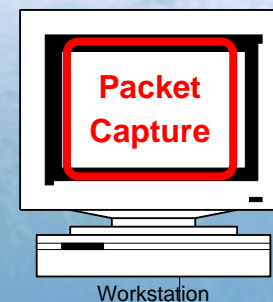
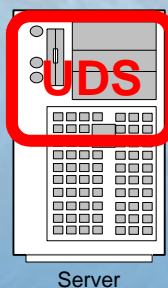
PI Enhancements to Address FDA Regulation 21CFR Part 11

- Audit Management Database (SR1) Released
 - Simplifies Compliance With 21 CFR Part 11 Audit Requirements
 - Supplies Tools & Audit Management Database to Generate Required Reports
 - Audits All Values, Configuration & Security Changes
 - Enforces Authorized Access Permissions & Provides Password Management
 - Detects Attempts to Modify Records in Database
 - Enforces Logon Security & Audit Trails for Any Manual Data Changes
- Meets FDA's Computer System Validation-Ready Requirements

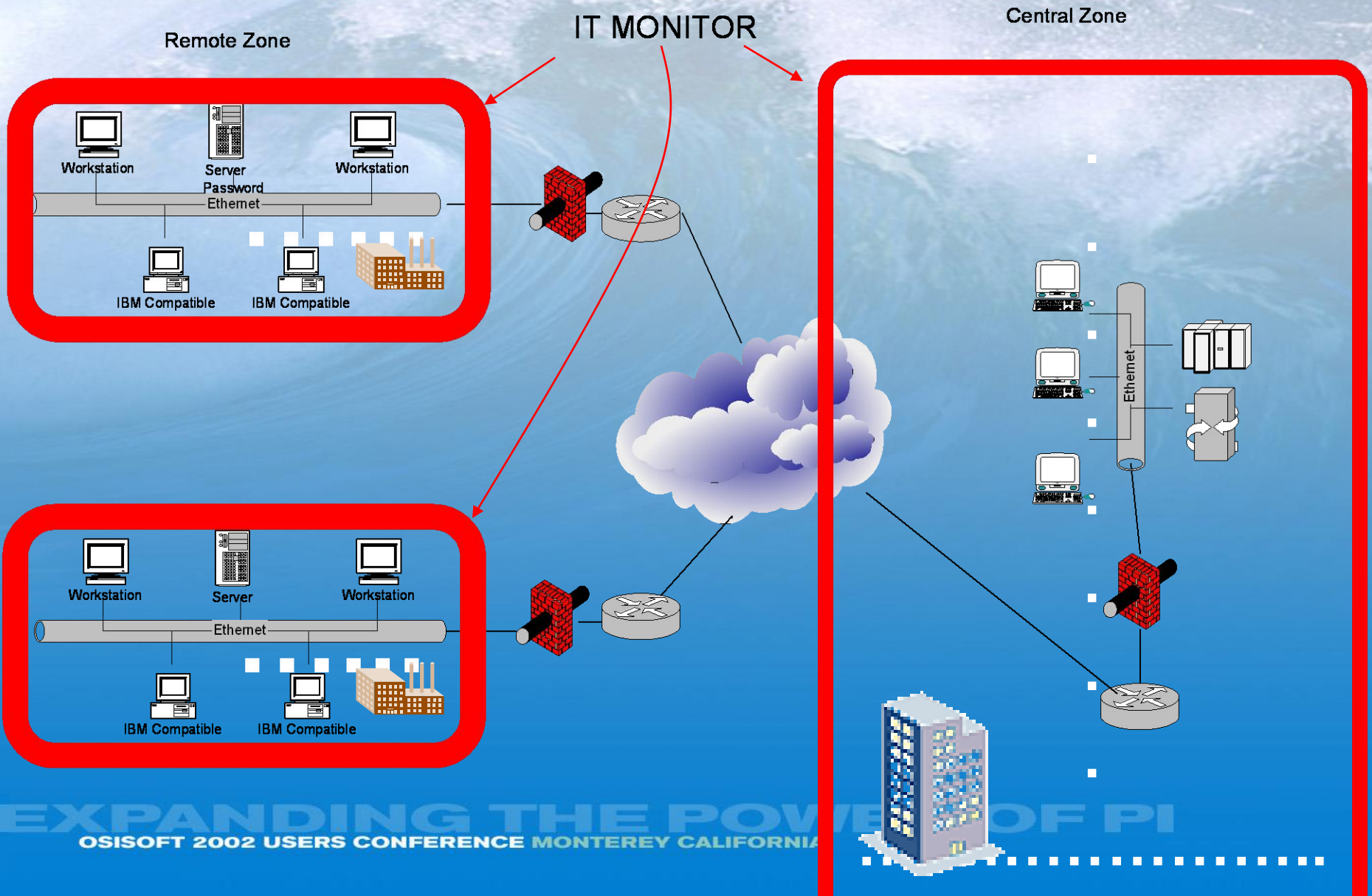
IT Monitor

- ✓ A “PI” System that collects **infrastructure** metrics.
- ✓ A collection of interfaces that “sees” networks, servers, applications
- ✓ A system that reduces support costs

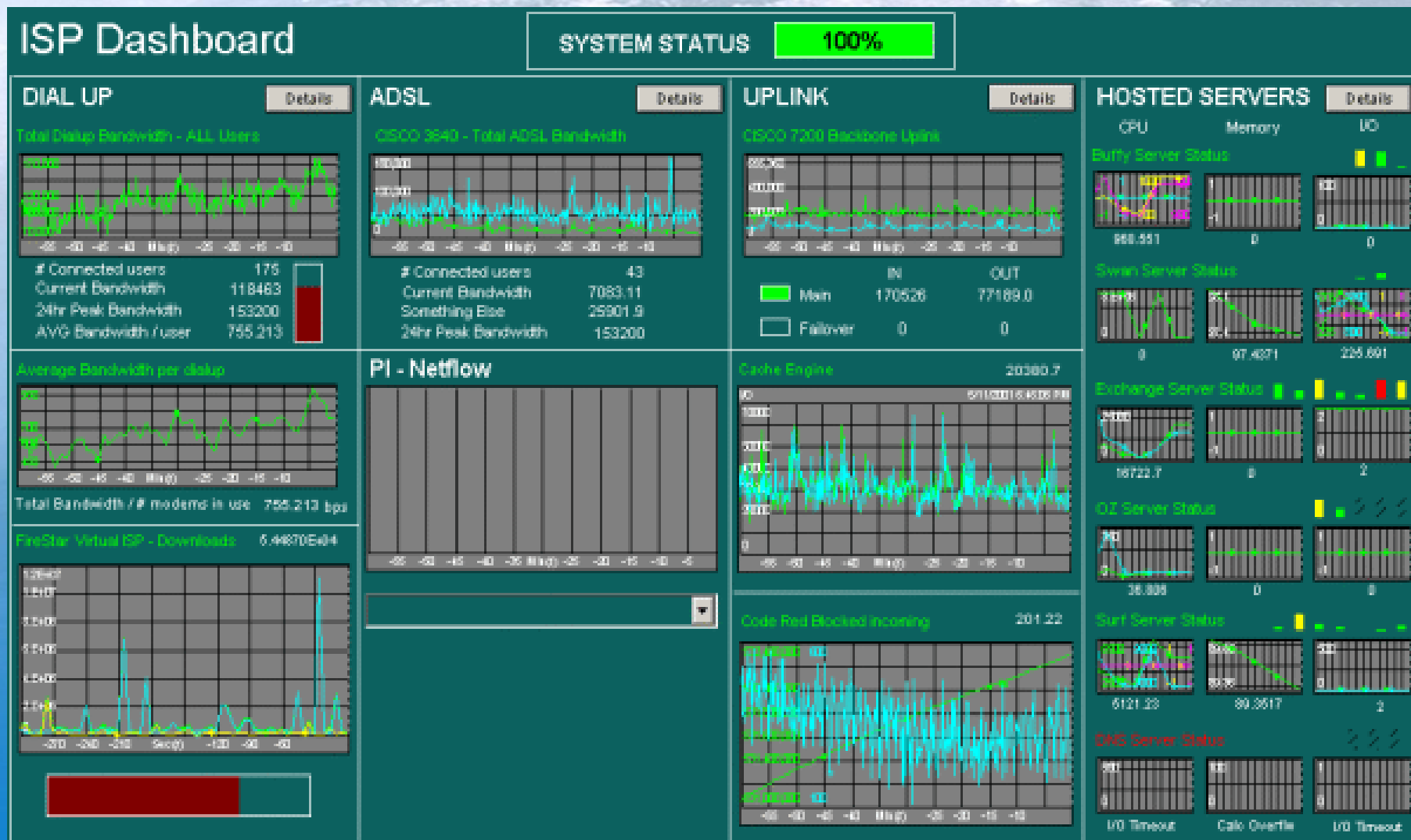
IT Monitor in Local Area Networks



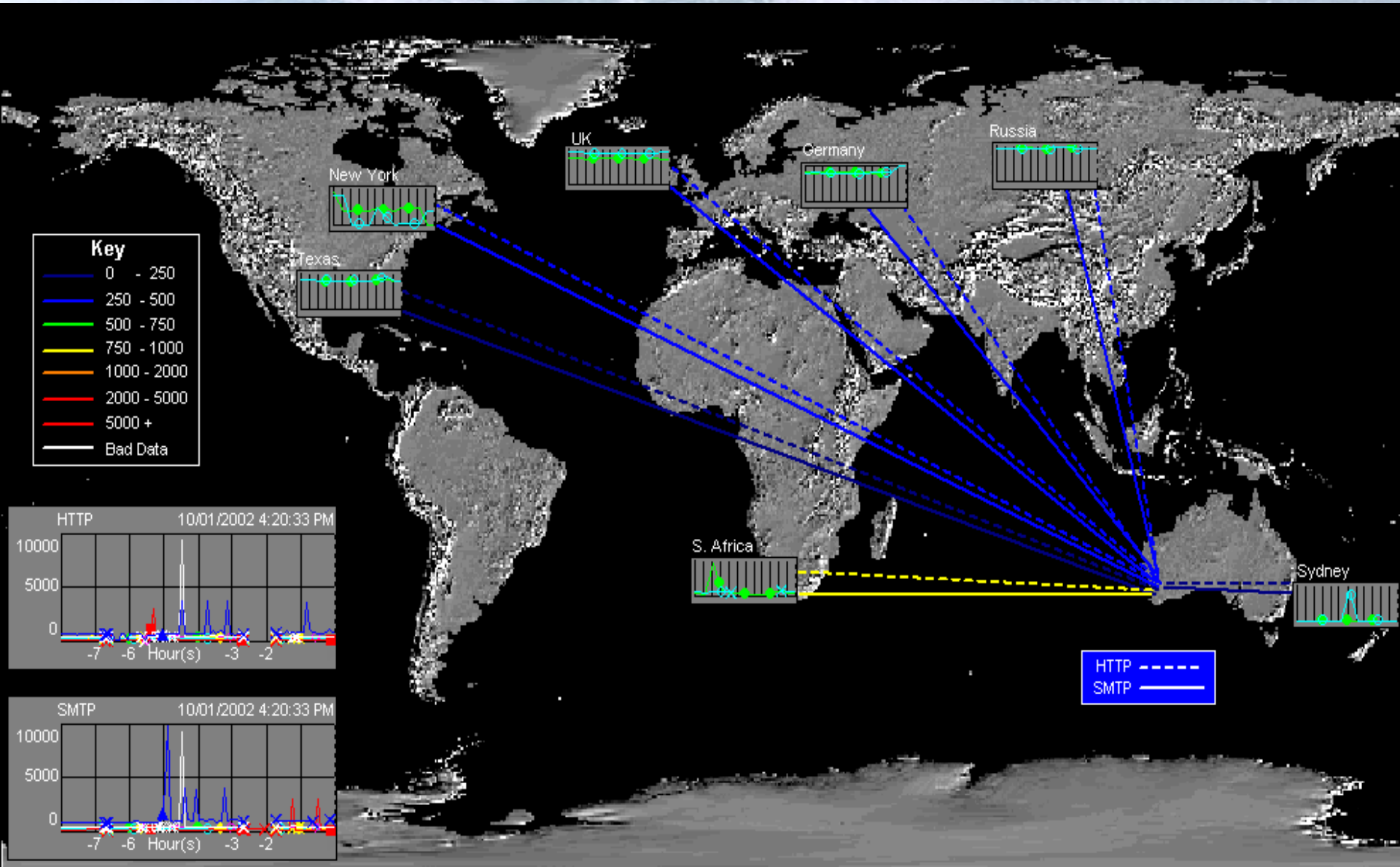
WAN Implementation



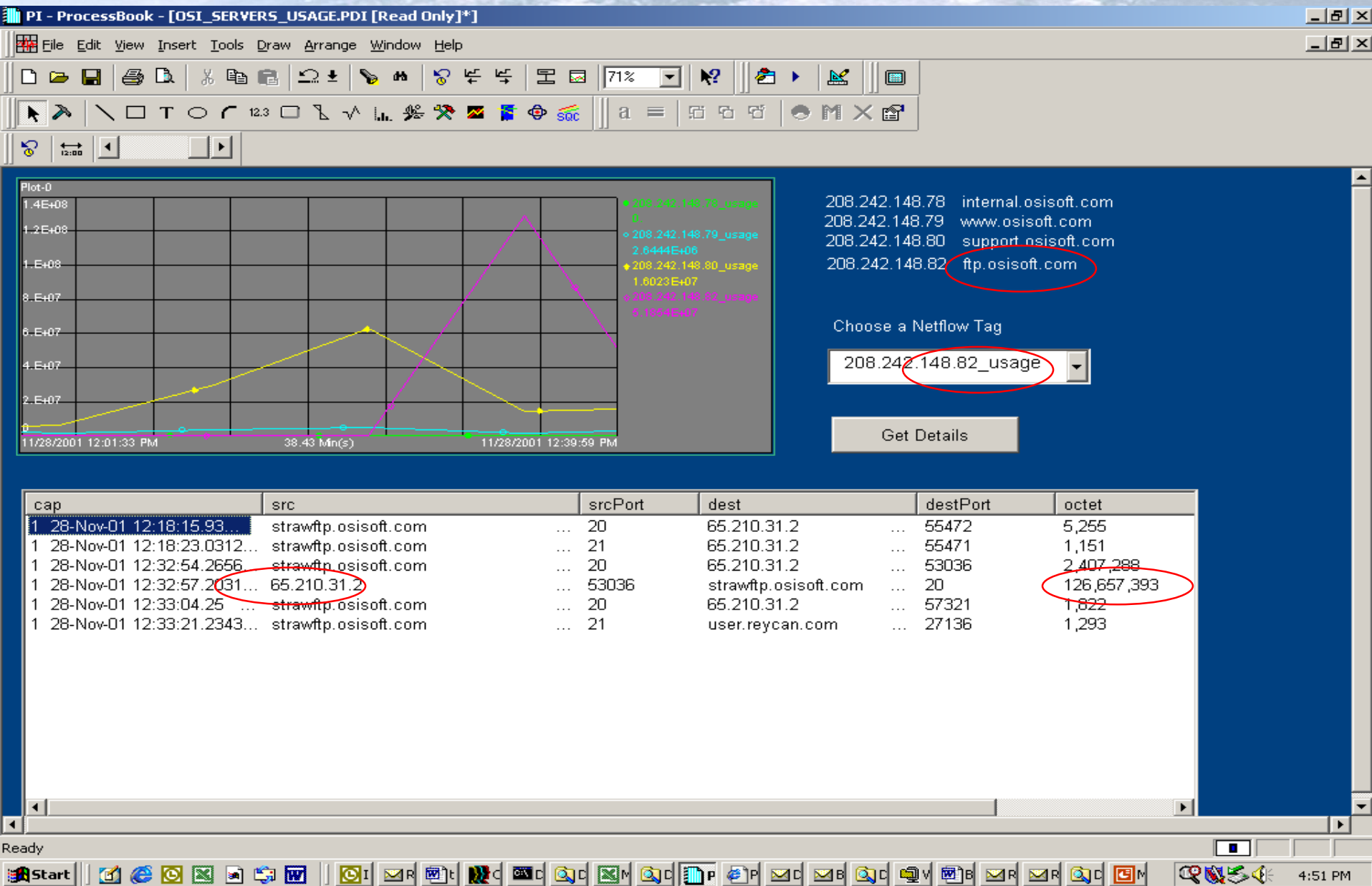
Example: Service Monitor



Example: Response Monitor



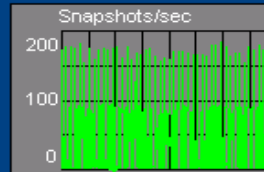
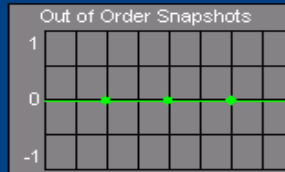
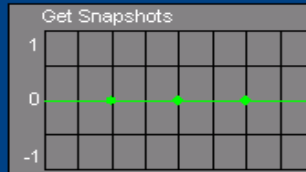
Example: Packet Monitor



Example: PI Monitor

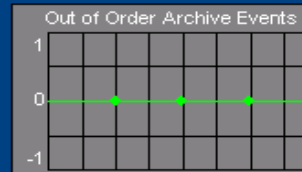
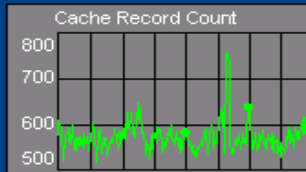
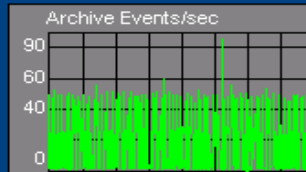
PI Snapshot Subsystem

Completed Posts/sec..... 0
GetSnapshots/sec..... 72
Out of Order Snapshots/sec 0
Pending Posts/sec..... 0
Queued Events/sec..... 6
Snapshots/sec..... 17
Total Posts/sec..... 0



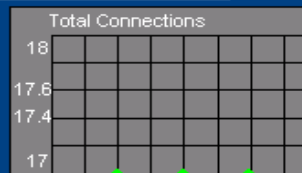
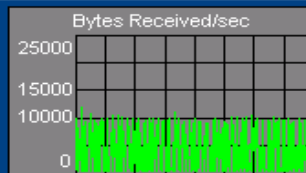
PI Archive Subsystem

Archive Events/sec..... 6
Cache Record count..... 590
Cache record disk reads/sec 0
Cache record disk writes/sec 0
Events cascade/sec..... 0
Events read/sec..... 66
Out of Order Events/sec..... 0
Overflow Index Records/sec 0
Overflow Data Records/sec..... 0
Primary Archive #..... 4
Read operations/sec..... 14
Hours to archive shift..... 0



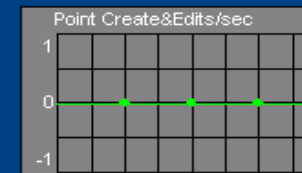
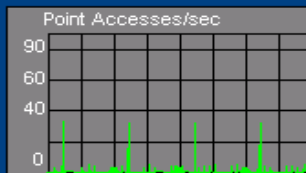
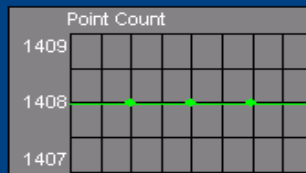
PI Network Manager Subsystem

Bytes Received/sec..... 7854
Bytes Sent/sec..... 7978
Connections..... 18
Messages Received/sec..... 130
Messages sent/sec..... 130
Overflow/sec..... 0
Receive Errors..... 0
Send errors..... 0



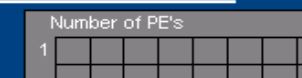
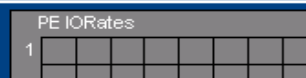
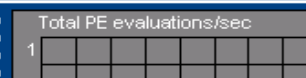
PI Base Subsystem

Point Count..... 1408
Point Create&Edits/sec 0
Point Accesses/sec..... 0



PI Performance Equation Scheduler

AreFindCalls/sec..... Shutdown
AreSummaryCalls/sec..... Shutdown
AreValueCalls/sec..... Shutdown
Failed Evaluations/sec..... Shutdown





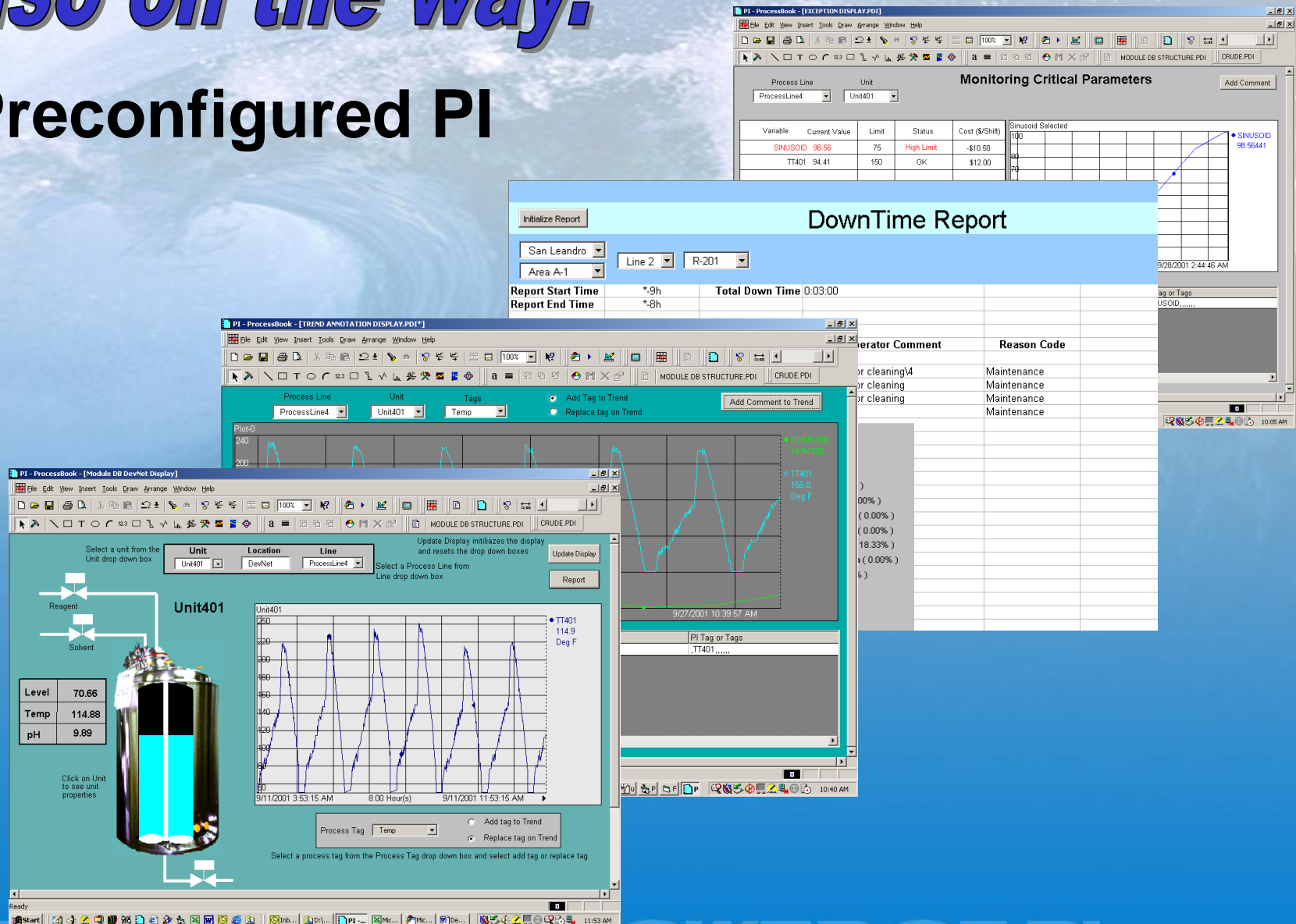
Also on the way:

“Preconfigured PI”

EXPANDING THE POWER OF PI
OSISOFT 2002 USERS CONFERENCE MONTEREY CALIFORNIA

Also on the way:

Preconfigured PI



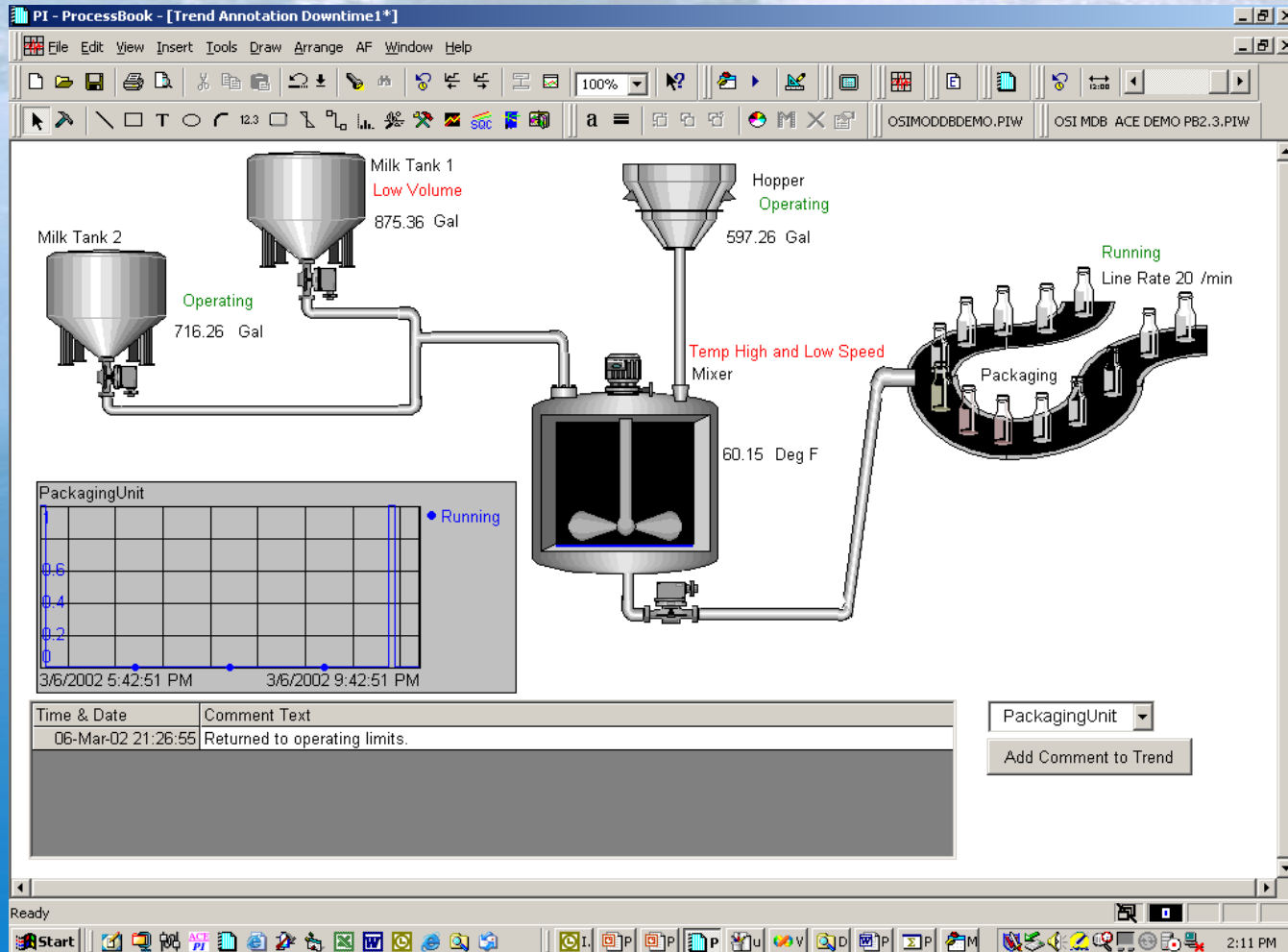
Preconfigured PI

- Starter Kit
- DevNet
- Preconfigured PI
 - Use of the PI Module Database
 - Method for building Standardized structures
 - Applications
 - Displays and Reports automatically constructed

Application Framework

- Provides the foundation for many applications
- Define “elements”
 - Connectivity between elements
 - Extensibility
 - Programmability (AF – SDK)

ProcessBook Display



DataLink Report

Microsoft Excel - ProcessReport.xls

File Edit View Insert Format Tools Data Window PI PI-SMT Help

100% Arial 10 B I U

Security...

OSIsoft

Process Event Report

Equipment: Mixer

Report Start Time: *2h

Report End Time: *

Initialize Equipment

Update Report

Process Event	# of Events	Duration (Min)	Reasons	# of Events	Duration (Min)
Operating	1	38	Operating Normal		0
Temp High		0	Temp Sensor Bad	1	29
Low Speed	5	27	High Amps on Mixer		0
Temp High and Low Speed	3	43	Speed Sensor Failure	2	91
Mixer Off		0			

Process Events		Reason Codes		Comments
06-Mar-02 21:57:33	Low Speed	06-Mar-02 21:40:18	Temp Sensor Bad	Replaced temp sensor
06-Mar-02 22:07:02	Mixer Off	06-Mar-02 22:09:32	Speed Sensor Failure	Speed sensor problem.
06-Mar-02 22:09:32	Low Speed	06-Mar-02 23:15:16	Speed Sensor Failure	Tripped on high amps.
06-Mar-02 22:26:13	Temp High and Low Speed			
06-Mar-02 22:27:03	Low Speed			
06-Mar-02 22:27:13	Temp High and Low Speed			
06-Mar-02 22:28:33	Low Speed			
06-Mar-02 22:28:43	Temp High and Low Speed			
06-Mar-02 22:30:04	Low Speed			
06-Mar-02 22:30:14	Mixer Off			
06-Mar-02 22:36:54	Operating			
06-Mar-02 23:15:16	Mixer Off			

Report / Sheet3

Ready

Start

2:17 PM



Surprise Topic:

EXPANDING THE POWER OF PI
OSISOFT 2002 USERS CONFERENCE MONTEREY CALIFORNIA

Surprise Topic: Pricing

- Next to product naming, the second most difficult subject in Sales and Marketing
- Interdependencies and complexities

Surprise Topic: Pricing

- Next to product naming, the second most difficult subject in Sales and Marketing
- Interdependencies and complexities

Planned Announcement

Surprise Topic: Pricing

- Next to product naming, the second most difficult subject in Sales and Marketing
- Interdependencies and complexities

Planned Announcement

OSI Introduces:

The new PI Pricing Training Class



Instead, we'd like to announce:

EXPANDING THE POWER OF PI
OSISOFT 2002 USERS CONFERENCE MONTEREY CALIFORNIA



Instead, we'd like to announce:

Simplification of Pricing

- Basic PI Historian
- Single Server PI
- Enterprise PI
- Small, Medium, and Large

Final Topic: Marketing

A large, powerful blue wave is crashing, creating a massive splash of white water. The wave is curling over, and the water is a deep, vibrant blue. The background is a lighter blue, suggesting a bright, sunny day at the beach.

EXPANDING THE POWER OF PI
OSISOFT 2002 USERS CONFERENCE MONTEREY CALIFORNIA

Final Topic: Marketing

Three Primary Goals

- General awareness
- Lead generation
- Support of sales effort

PI system evolution

Echo (Component Historian)
 PI SDK, Module Database & PI ACE • Web Portal PI ICE • PI Applications Framework • Microsoft Certified Partner
 DevNet Launched • OSIssoft Trade Name • PI SDK 1.0
 Microsoft Certified Solution Provider (MCSP) • Sigmafine & SQC Products • PI on Web via PI ActiveView
 Microsoft ActiveX Container and enhanced VBA support in ProcessBook 2.0
 PI BatchView
 RLINK certified by SAP • PI Profile for Windows • VBA added to PI ProcessBook
 PI for Alpha/VMS • PI ODBC • Server NT • Unix
 PI ProcessBook
 PI Batch for VMS • Client / Server • DataLink
 PI 2.0 (Formula Library) • Graphics Package for VMS • PI API for VMS, Windows and Unix
 PI Profile for VMS
 XWindows Support for VMS • First PI Users Conference
 Real-time SQC and Event Logger for VMS
 Report Writer and PI Net for VMS
 Data Analysis Package
 VAX / VMS
 HP1000



OSIssoft™

PI Systems Sold Worldwide

1K 2K 3K 4K 5K

2002

2001

2000

1999

1998

1997

1996

1995

1994

1993

1992

1991

1990

1989

1988

1987

1986

1985

1984

1983

informed decisions

Management & Financial
Planning & Maintenance
Production & Operations
SAP R/3

PIsystem™

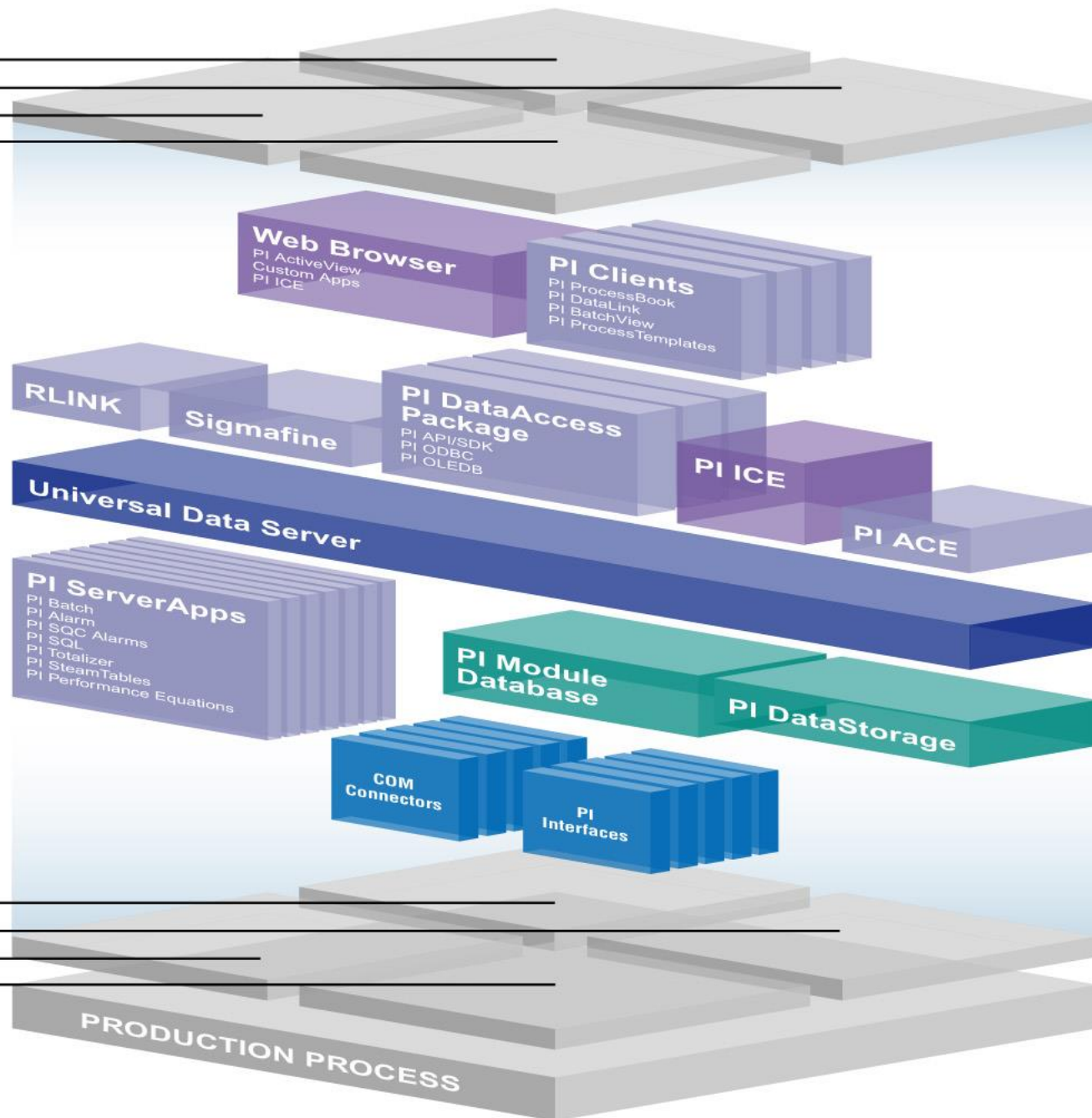
The PI System provides a technological infrastructure that closes the time and information gap between management and actual production floor operations. Real-time operations data is acquired, routed, processed and displayed simultaneously on desktops, portables and PDAs throughout the enterprise worldwide, at the push of a button.

Data is stored for decades, yet remains instantly accessible at its original time resolution for automated reporting, trending and analysis.

The PI System is your global window on the process. All of your decision-makers will be seeing the same data at the same time, enabling faster, more informed decisions for enhanced competitive agility, better predictive maintenance, pin point batch and quality control, precision reporting, and more comprehensive planning and analysis. The results are greater efficiencies, and a more profitable enterprise overall.

operations data

Legacy Information System
Relational Database
Advanced Control System
Lab System

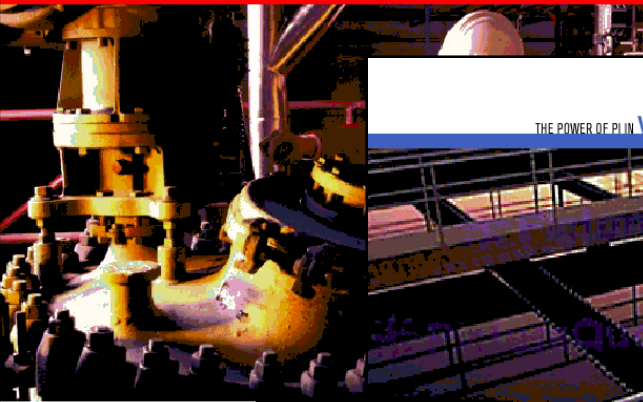


Marketing

- A lot of work has been done in the past year
 - Developed a whole new message
 - New web site
 - Industry brochures
 - Trade shows
 - Technology seminars
 - User's Conference
 - Business Now Video
 - Public Relations

New Industry Brochures

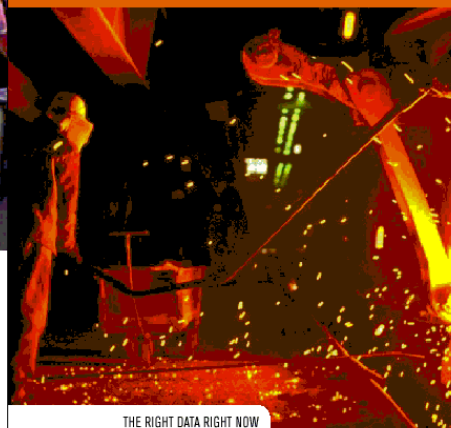
THE POWER OF PI IN **chemicals**



THE POWER OF PI IN **water management**



THE POWER OF PI IN **metals, materials & mining**



THE POWER OF PI IN **pharmaceuticals & biotech**



THE RIGHT DATA RIGHT NOW

OSIsoft™

THE RIGHT DATA RIGHT NOW

OSIsoft™

THE RIGHT DATA RIGHT NOW

OSIsoft™

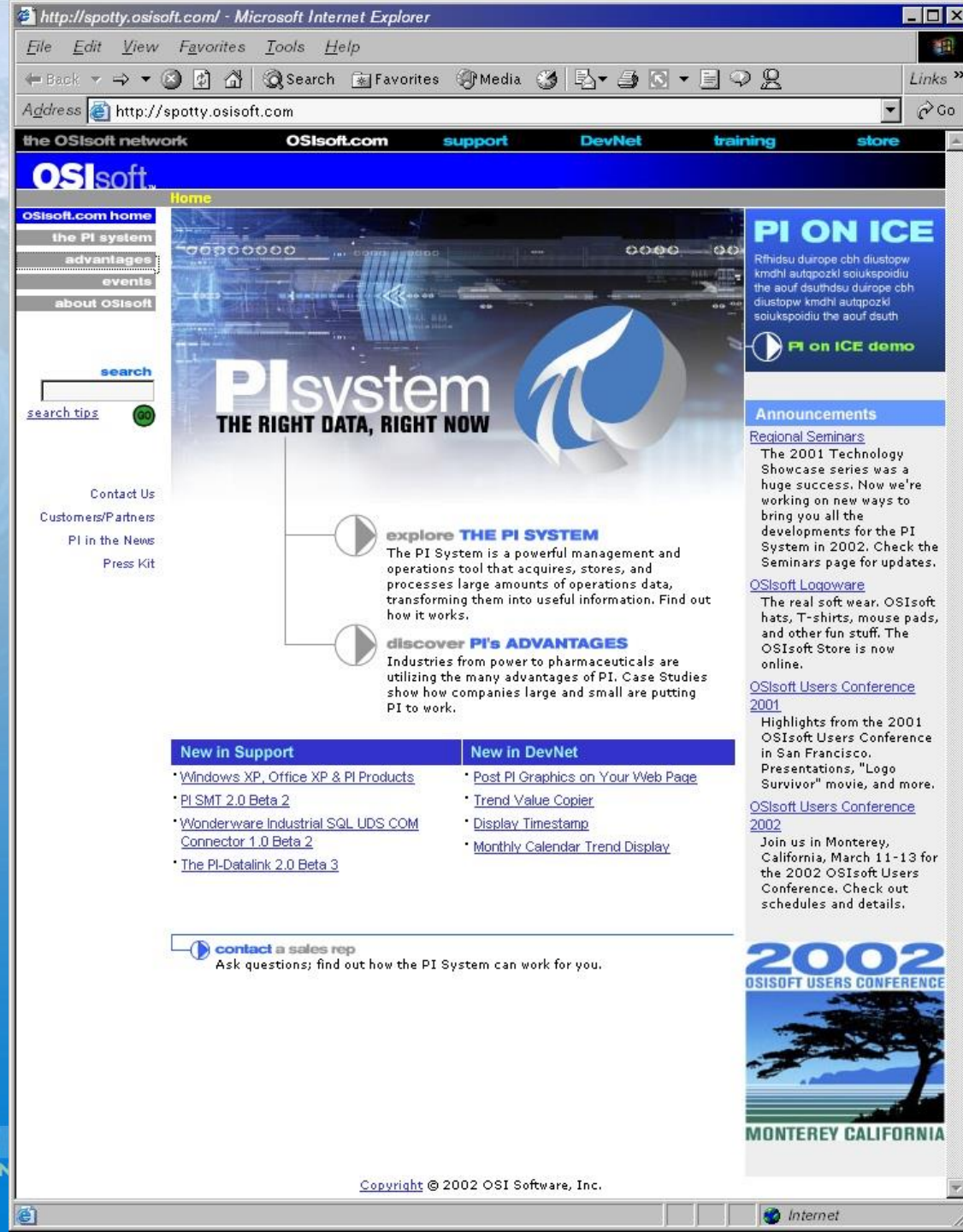
THE RIGHT DATA RIGHT NOW

OSIsoft™

EXPANDING THE POWER
OSISOFT 2002 USERS CONFERENCE MONTEREY CALIFORNIA

New Web Site

- Entirely new content
- Entirely new layout





Friends and Family

EXPANDING THE POWER OF PI
OSISOFT 2002 USERS CONFERENCE MONTEREY CALIFORNIA

Finally – Signs for the Building



EXPANDING THE POWER OF PI
OSISOFT 2002 USERS CONFERENCE MONTEREY CALIFORNIA