



2002
OSISOFT USERS CONFERENCE



**EXPANDING
THE POWER OF PI**

MONTEREY CALIFORNIA



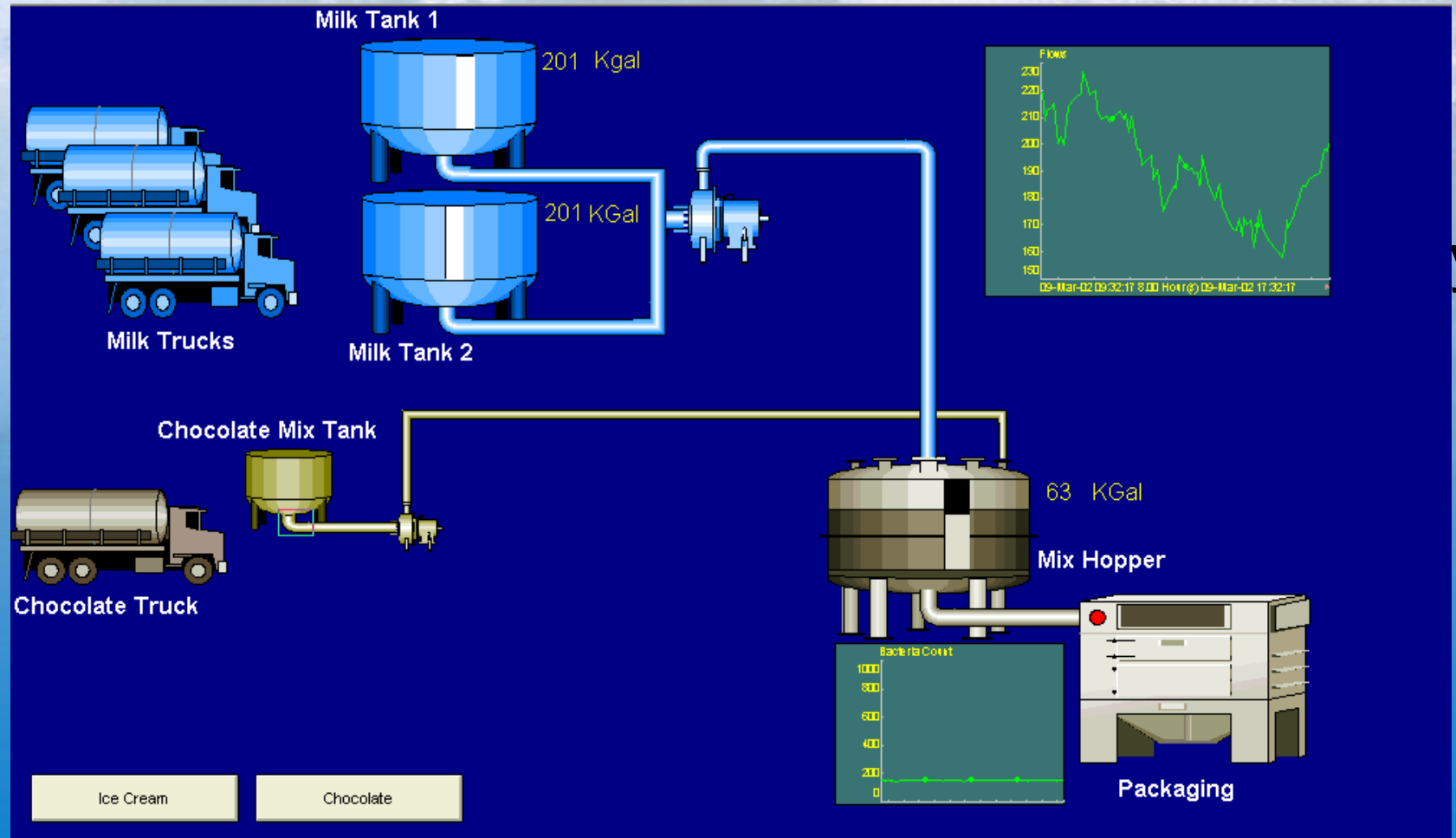
OSISOFT™

PI BatchView 3.0

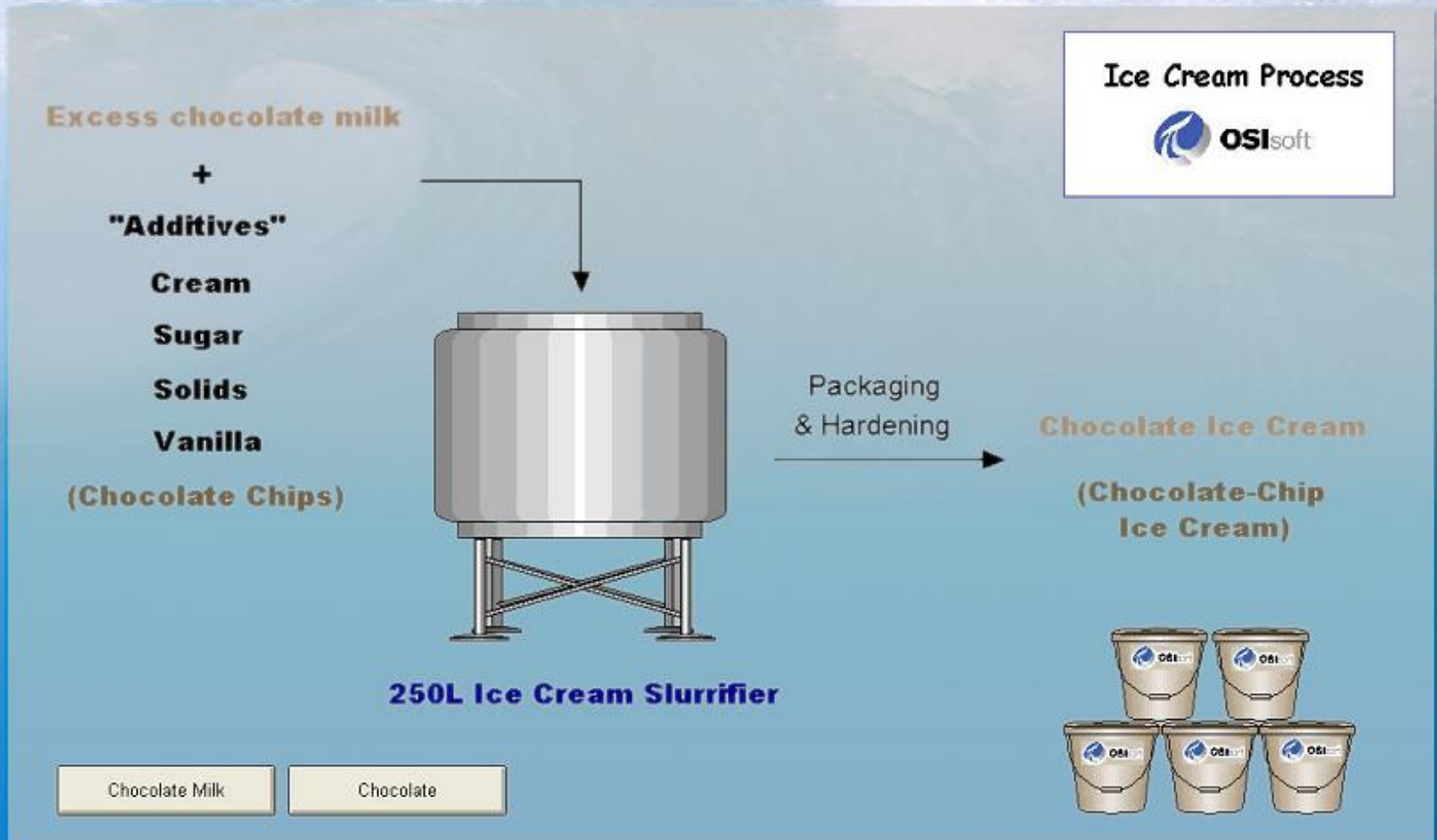
Presentation of your rich batch information

Chris Coen, Software Developer, OSISOFT

OSISoft Chocolate Milk Factory



Chocolate Ice Cream Process

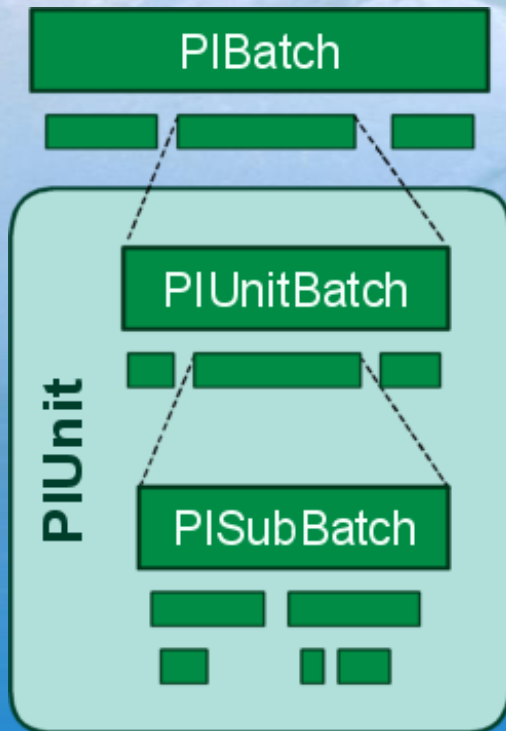


Batch Subsystem (BSS)



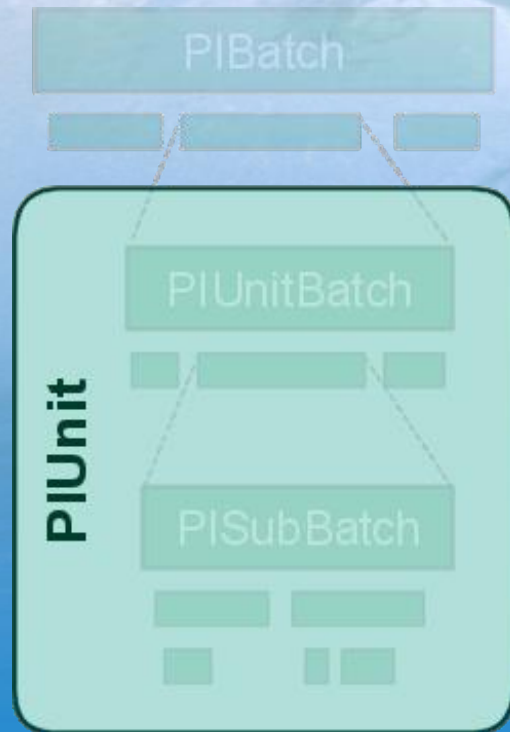
- PI 2.x and PI 3 Servers
- Unit
 - Exclusive Batch execution
 - Aliases
- BSS monitors batch active tag and creates batches

Batch Database (BDB)



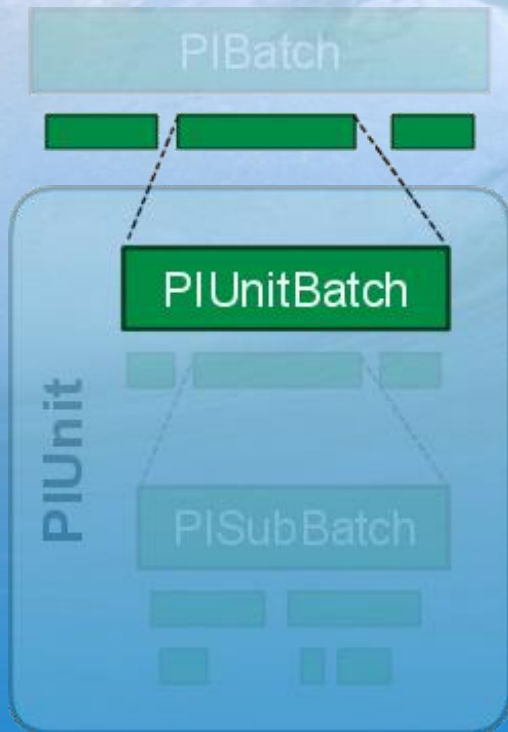
- PI 3.3 and greater
- Multiple batch levels
- Integrated with PI Module Database
- External data generation

PIUnit



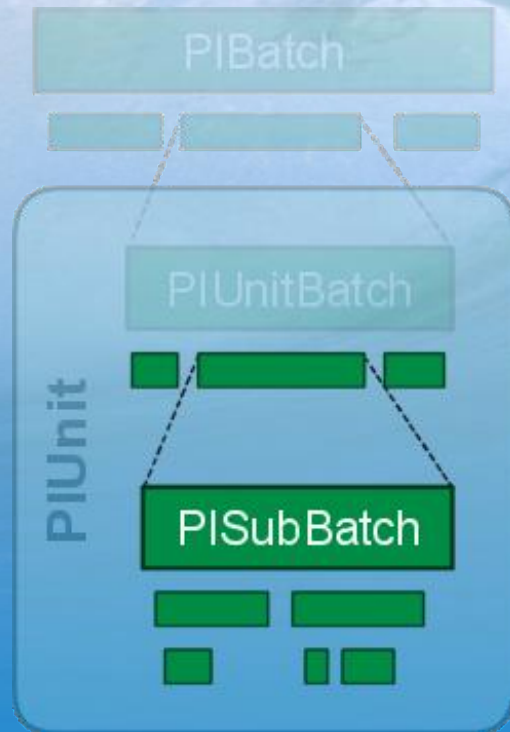
- A PIModule
- Configured with PI Module Database Editor
- Name, PIAliases, PIProperties

PIUnitBatch



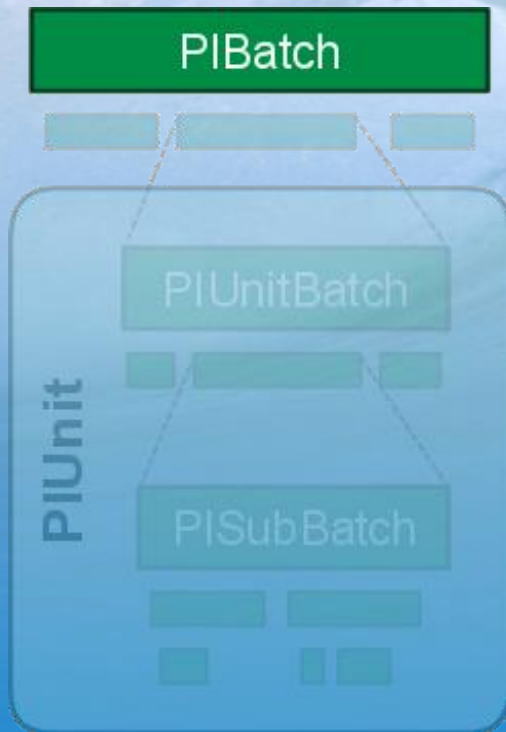
- Exclusive – one batch in unit at given time
- Equivalent to
 - Batch in PI 3.2
 - S88 Unit Procedure
- Batch ID, Procedure, Product

PISubBatch



- Hierarchical
 - Operation
 - Phase
 - Step
- Name, PIHeading

PIBatch



- Independent from physical equipment
- Relates to overall recipe and the material produced
- Batch ID, Recipe, Product, PIProperties

BatchView 3.0 Quick Search

PI BatchView Search [PIUnitBatches]

Select

Find:

Include: ☐ Running ☐ Completed ☒ Both

Servers:

Time Range

Active and

Attributes

Batch ID

Product

Unit Name

Search

Advanced...

Clear

About...

Close

Batch ID	Product	Unit Name	Start Time	End Time	Duration
ABC1	Yellow	Reactor1	09-Mar-02 12:15:00	09-Mar-02 13:26:00	01:11:00
ABC1	Orange	PIBaGenTest1	09-Mar-02 12:15:00	09-Mar-02 13:26:00	01:11:00
ABC9234	Orange	r401	09-Mar-02 12:42:00	09-Mar-02 12:50:00	00:08:00
ABC1	Orange	PIBaGenFast...	09-Mar-02 12:44:00	09-Mar-02 12:50:00	00:06:00
XYZ99	Green	PIBaGenFast...	09-Mar-02 12:50:00	09-Mar-02 12:51:00	00:01:00

Search complete (31 found)

BatchView 3.0 Excel Add-In

Microsoft Excel - icecream batch report.xls

File Edit View Insert Format Tools Data Window PI PI-SMT Help

100% Arial 10

Security...

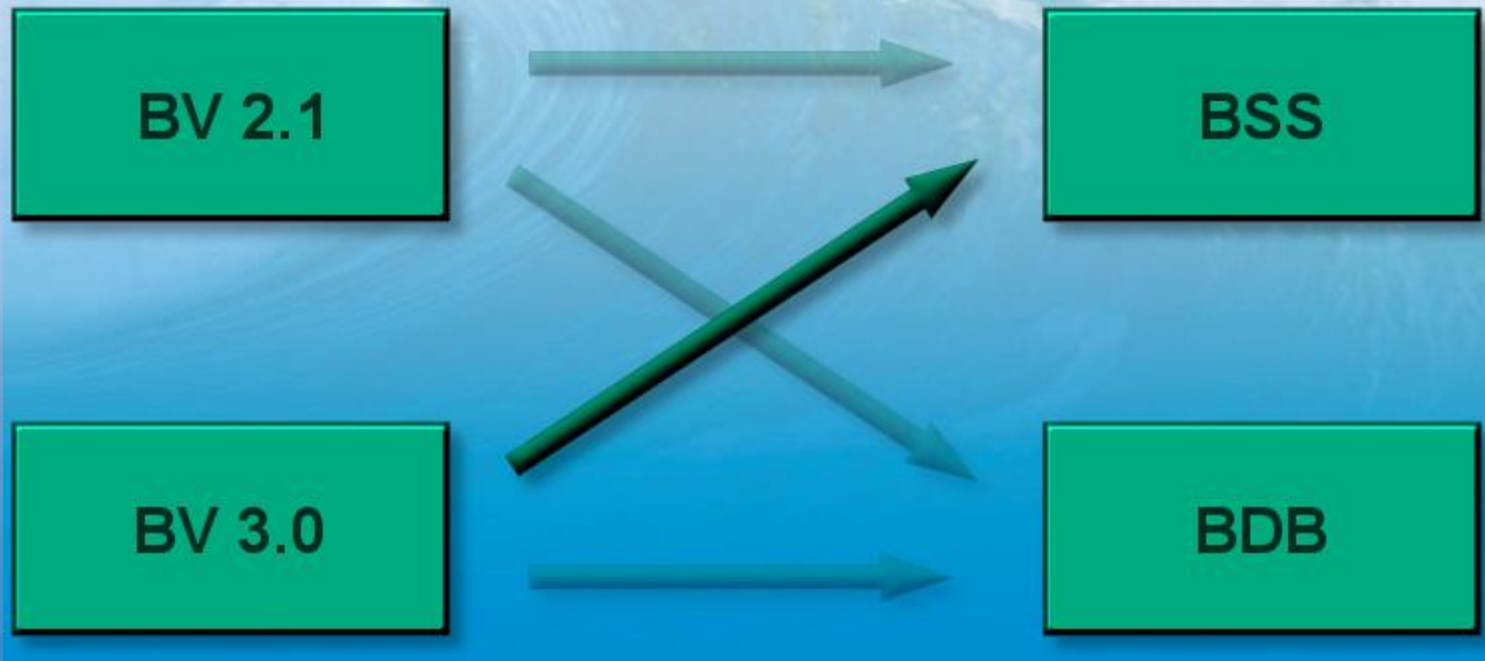
17 =

	A	B	C	D	E	F	G
1							
2	BatchID	chocolate23					
3	Start	4-Mar-02					
4	End	5-Mar-02					
5							
6							
7	PIBatch	PIUnitBatch	Operation	Phase	Step	StartTime	EndTime
8	Chocolate23					04-Mar-02 10:35:03	04-Mar-02 11:10:21
9		Chocolate23A				04-Mar-02 10:38:12	04-Mar-02 11:08:17
10			Prechill			04-Mar-02 10:38:24	04-Mar-02 10:40:14
11			Charge			04-Mar-02 10:40:14	04-Mar-02 10:44:33
12				Chocolate Milk		04-Mar-02 10:40:18	04-Mar-02 10:41:48
13				Additives		04-Mar-02 10:41:48	04-Mar-02 10:44:04
18			Aerate			04-Mar-02 10:41:53	04-Mar-02 11:01:33
20			Unload			04-Mar-02 11:02:28	04-Mar-02 11:05:19
24			Clean			04-Mar-02 11:04:41	04-Mar-02 11:07:40
25		Chocolate23B				04-Mar-02 10:38:12	04-Mar-02 11:08:17
41							
42							

Migrating to BDB and BatchView 3.0

- Clients
- Data
- Data generation

Migrating Clients



Migrating Data

- Unit migration
 - Create PIUnit in ModuleDB
 - BV 3.0 sees BSS data alongside new BDB data
 - Units have a cutover date from BSS to BDB data
- Data Migration
 - Reprocess all old archives

Migrating Data Generation

- Migrate units
- PI Batch Generator
- PI Event File Interface

Batch Data Generation

- BSS uses the pibatchss
 - Pibatchss installed with PI Server Applications
- BDB
 - PI Batch Generator (PIBaGen)
 - Interface installed with PI Server Applications
 - Creates PIBatches, PIUnitBatches, PISubBatches from PI Points
 - PI Event File Interface
 - Version 3.0 will create BDB data
 - OpenBatch-based batch execution systems

What's Next

- PI BatchView 3.0 beta 1
- PI BatchView 3.0 for PI ActiveView
- PI Batch ICE

Visit us in the demo room

- Test drive PI BatchView 3.0
- Ask us questions
- Give us your feedback