

# What you need to know about Wi-Fi before you implement

*imagine. develop. evolve.*

**Presented by:**  
**John Matranga**  
**CTO**



Omicron Consulting  
1500 Market Street  
Philadelphia, PA 19102

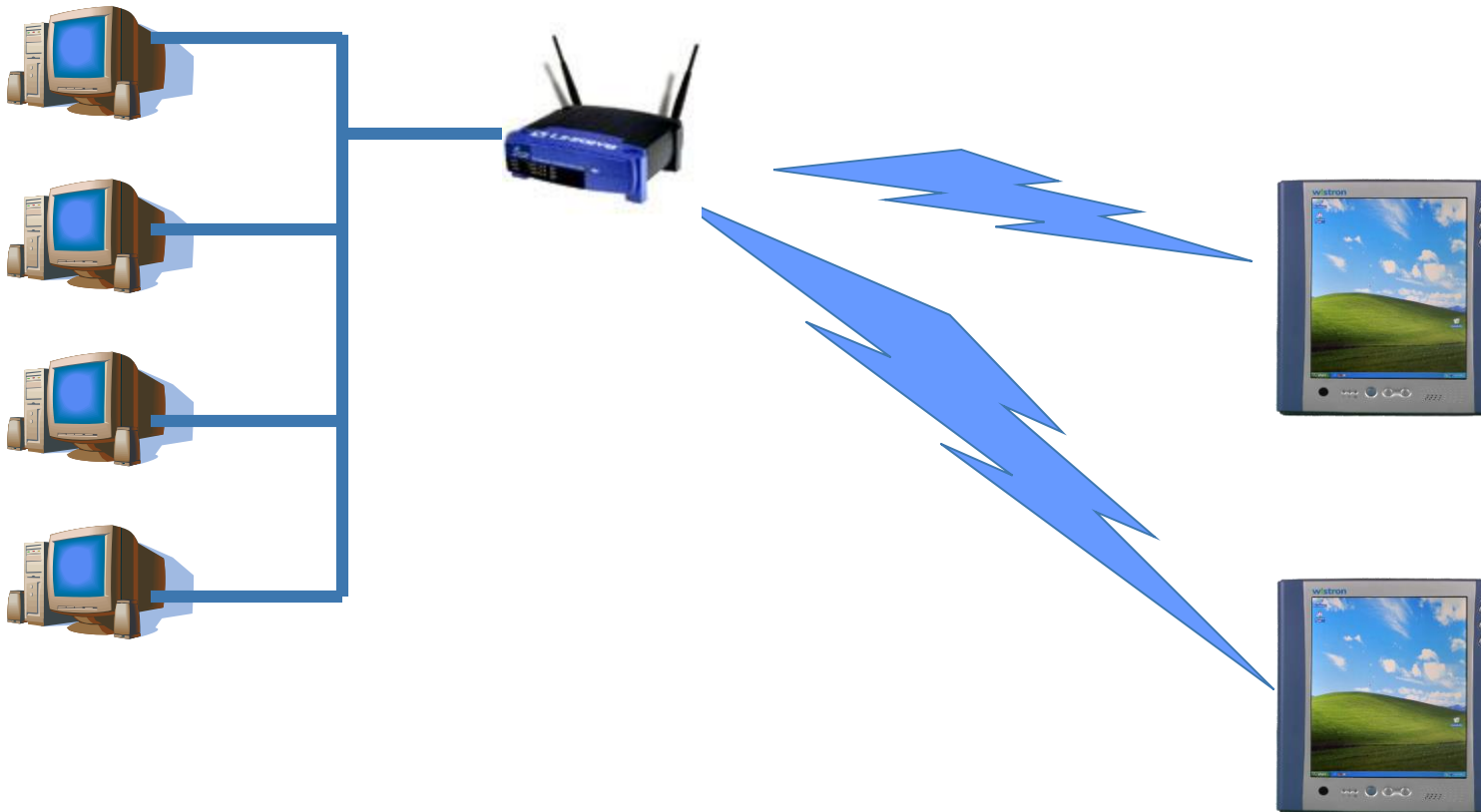
# Abstract

- **Despite frequent warnings about the poor security in the IEEE 802.11b (Wi-Fi) standard, more private networks are broadcasting than ever. There are good reasons for this. In this talk we will cover a survey of the uses, security concerns and best-practice implementation suggestions for a Wi-Fi Network. We will also review solutions targeted for intrinsically safe manufacturing environments for mobile technology. Finally, we will end with a look to the future, where is Wi-Fi going and how fast is it moving.**

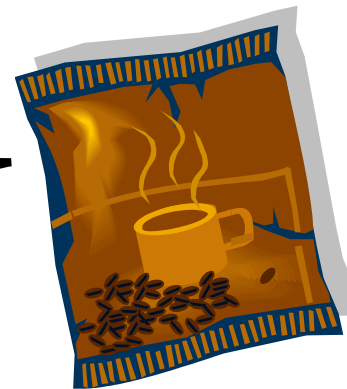
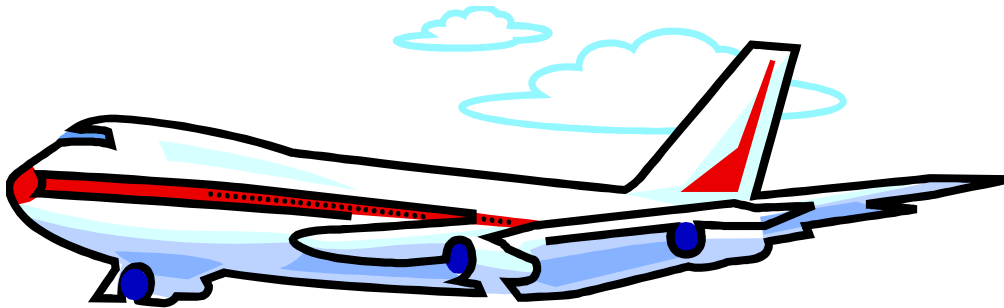
# Agenda

- **802.11 Today**
  - **Common Uses Today**
  - **What Is It?**
- **Wi-Fi Issues**
- **Best Practices For Your Design**
- **802.11 Wrap-up**
- **Mobility in Manufacturing**
  - **Tablet PC Demo**
- **More Info**

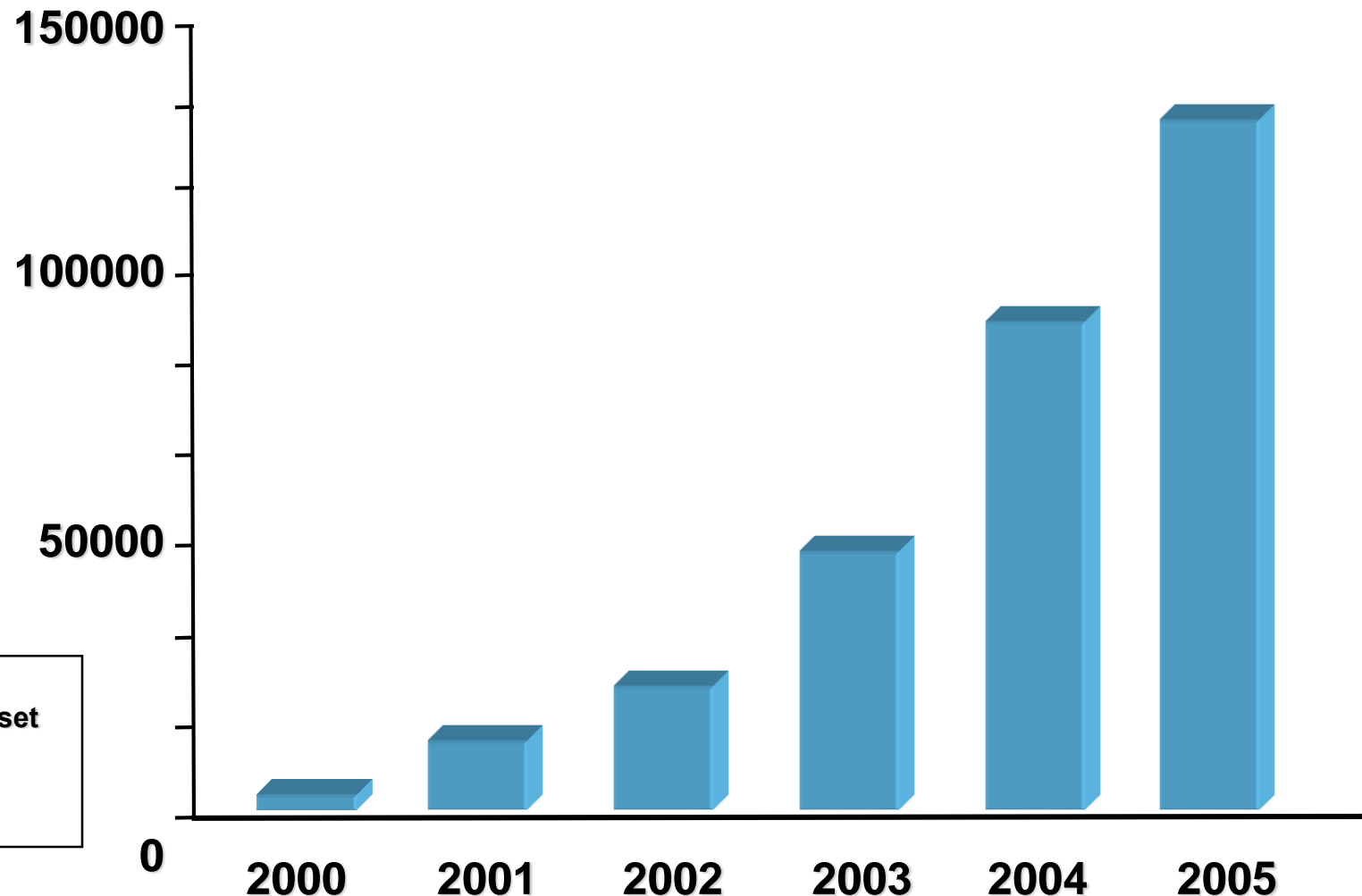
# The Jump: Wired to Wireless



# Some Common Uses



# WLAN Chipset Growth



Source:  
"Wireless LAN Chipset  
Forecast",  
Gartner Dataquest,  
September 13, 2001

# Some Market Figures

- **Equipment Costs Dropping**
  - Home ~\$100
  - Industrial Strength ~ \$2,000/Hotspot
- **Intel To Spend 300MM On Centrino Marketing**
- **Cisco Paid 500M To Buy Linksys**
- **Microsoft**
  - Hardware Manufacturer
  - Windows XP & Tablet PC Are Key
  - Office/Outlook 2003 Make It Useable
- **Investments**
  - Cometa == Intel + IBM + AT&T
    - MAN Next March 5,000 Hotspots
  - Boeing 100 Jets By Early 2004, 4000 In Next 10
  - Starbucks 2,100 Going To 16,000
  - Mcdonald's
    - Free 1 Hr With Value Meal Or \$3/Hr
    - Pilots 10 Locations In NYC
    - 100's By Year End
  - Dell – Every Laptop By Summer, HP 70% Ready

# What is Wi-Fi?

- **Wi-Fi == Wireless Fidelity**
- **IEEE 802.11x**
- **What is not (for this talk)**
  - **IR**
  - **Cellular**
  - **Bluetooth**
  - **SMS (Short Messaging Service)**



# IEEE 802.11

- **Institute of Electrical and Electronic Engineers (IEEE)**
  - **LAN/MAN Standards Committee (802)**
    - **LAN = Local Area Network**
    - **MAN = Metropolitan Area Networks**
- **802 is sub-divided into working groups**
  - **Use a decimal point to designate working group**

# IEEE 802 Working Groups

- **Active (Still in development) 802 Working Groups**
  - **802.1 High Level Interface (HILI) Working Group**
  - **802.3 CSMA/CD Working Group**
  - **802.11 Wireless LAN (WLAN) Working Group**
  - **802.15 Wireless Personal Area Network (WPAN) Working Group**
  - **802.16 Broadband Wireless Access (BBWA) Working Group**
  - **802.17 Resilient Packet Ring (RPR)**
  - **802.18 Radio Regulatory Technical Advisory Group**
  - **802.19 Coexistence Technical Advisory Group**
  - **802.20 Mobile Wireless Access Working Group**

# 802.11x Look Up

- **802.11a - 5 - 6 GHz range, 54 Mbps (54a).**
- **802.11b - 2.4 GHz range, 11 Mbps (11b).**
- **802.11e - A Quality of Service (QoS)**
- **802.11g - 2.4 GHz range, 54 Mbps (54g).**
- **802.11h – 54a for use in Europe**
- **802.11i – Security – WEP Replacement**

# IEEE 802.11?

## ➤ 802.11a

- Approved as a standard September 1999
- 54 MB
- 5 GHz band

## ➤ 802.11b

- Approved as a standard September 1999
- Updates to standard approved in October 2001
- 11 MB
- 2.4 GHz band

## ➤ 802.11g

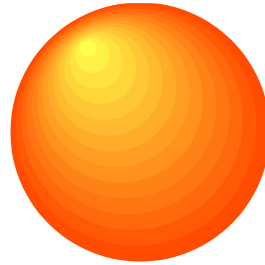
- Not yet an approved standard
- Final acceptance is expected in June 2003
- Develop higher speeds for 802.11b
- 54 MB
- 2.4 GHz band



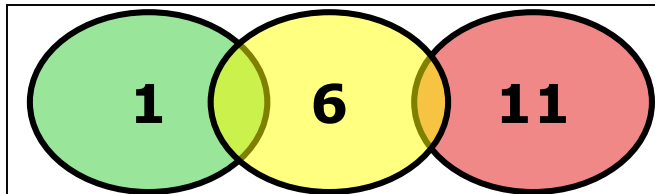
Shared Media

# 802.11b Channel Coverage

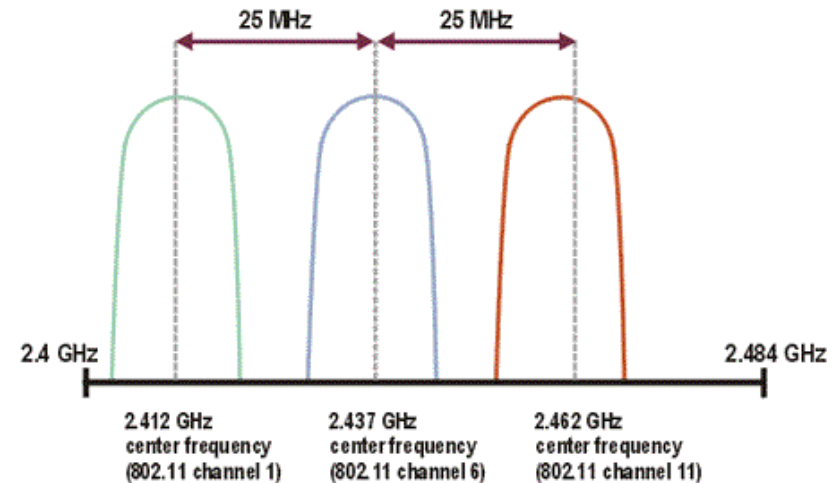
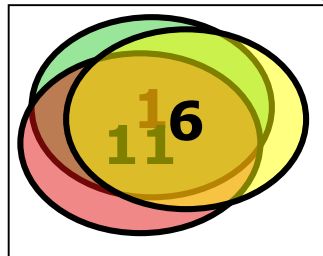
- **Sphere**  
~ 3-4 Stories



- **Room Coverage**



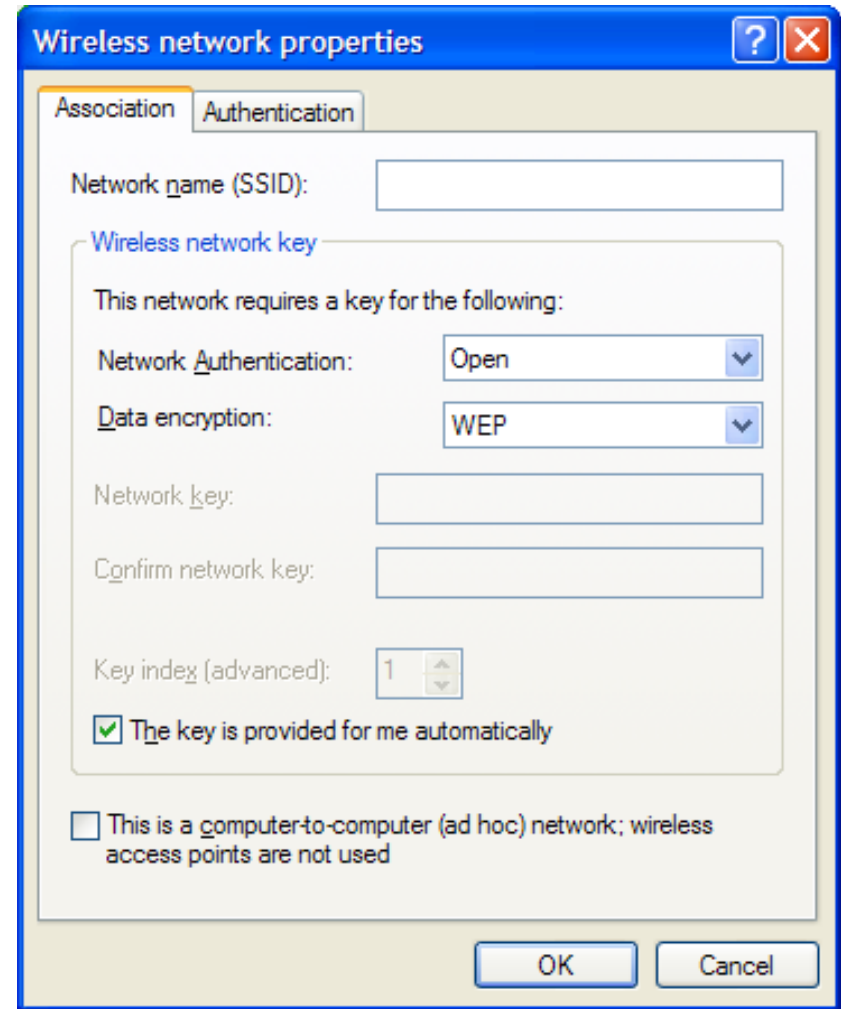
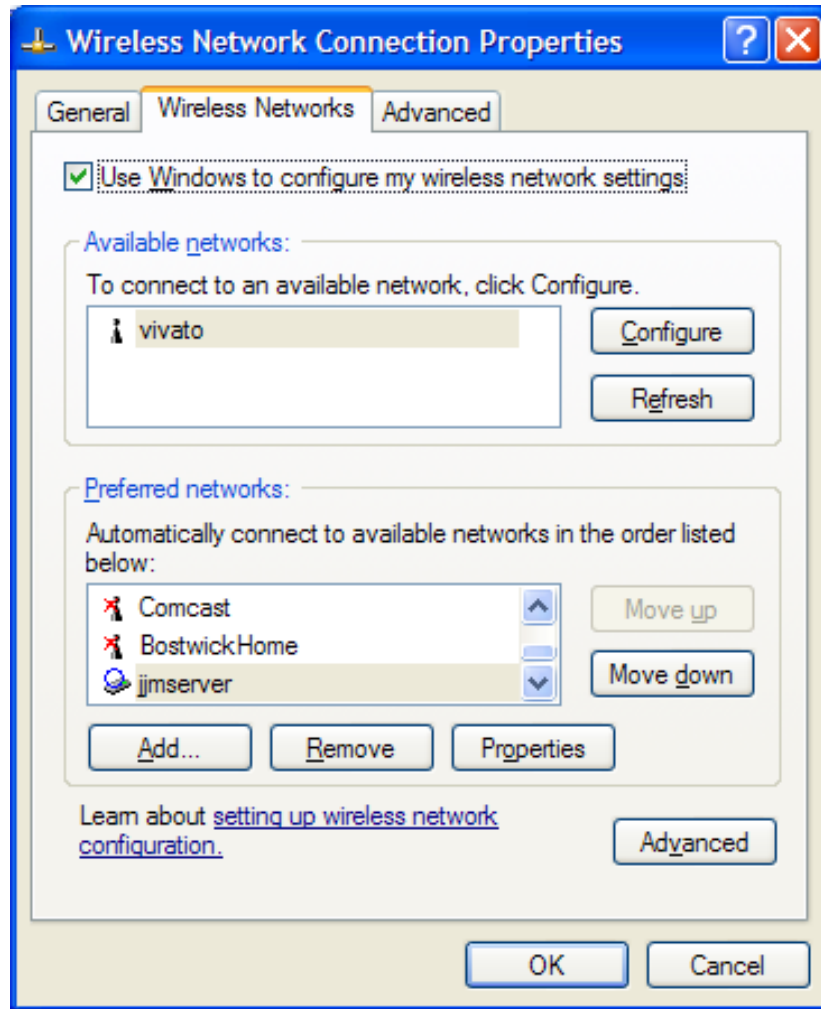
- **Shared Media Overlap**



Source: *The IEEE 802.11 Handbook: A Designer's Companion*

- **Channel Spacing**

# The Client-side Switches



# Wi-Fi Issues

## ➤ WEP

- Can Be Easily Broken

## ➤ Default is easy

- SSD

- Administrator Passwords

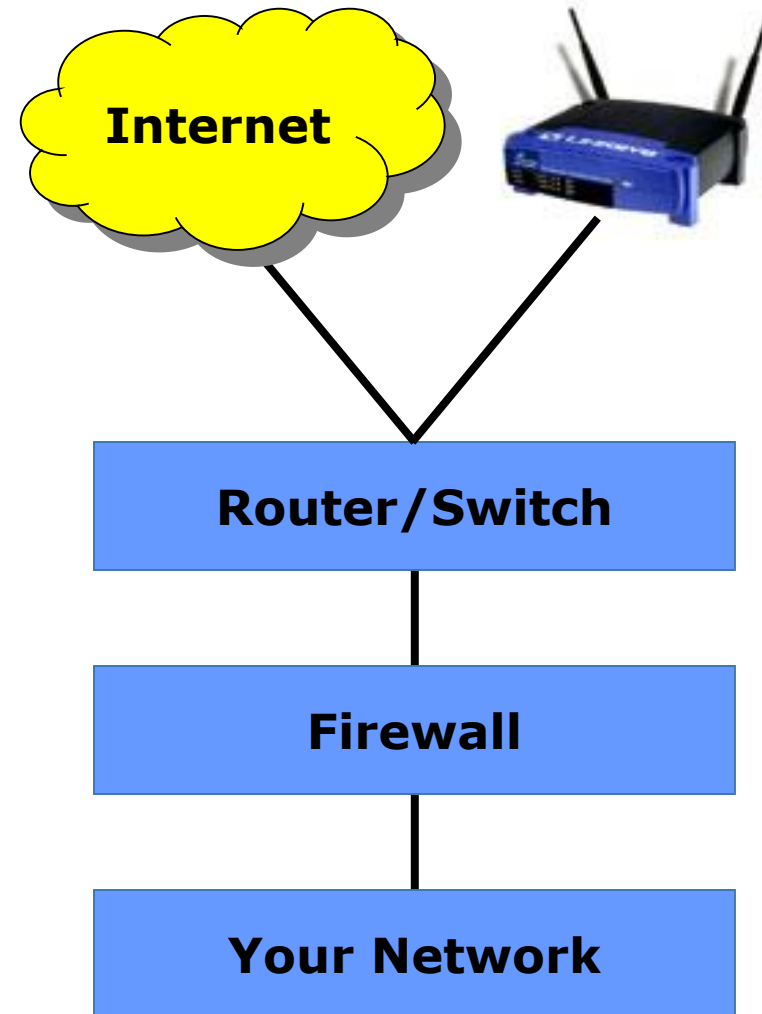
- DHCP to all by default

- MAC Not used

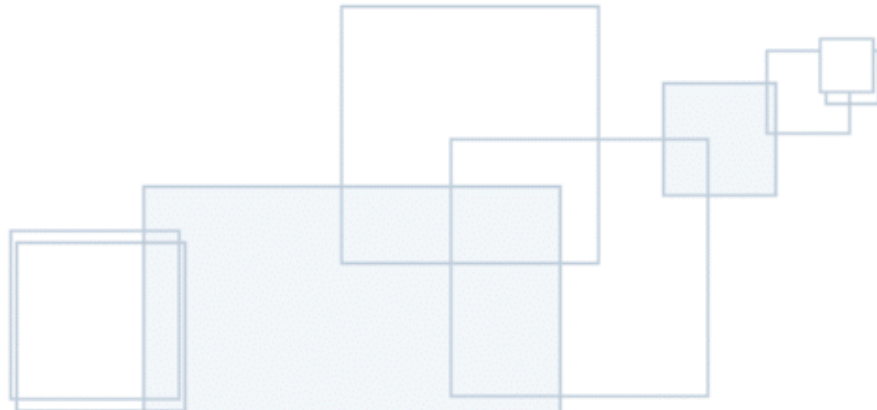
## ➤ Impersonation of Access point

# Some Best Practices

- **Un-Default**
- **Treat it as 'open' door.**
  - **Do not broadcast the SSID**
  - **Place Segment "Outside" the firewall**
  - **VPN**
  - **MAC Address**
  - **Consider Certificates**
- **802.11i**
- **Hack yourself & Learn**







*imagine. develop. evolve.*

# Other Notes & 802.11 Wrap-up



Omicron Consulting  
1500 Market Street  
Philadelphia, PA 19102

# Intel Centrino

- **Intel's new brand name of a combination of chips including CPU and wireless communications**
- **New CPU – Pentium-M**
  - **Not to be confused with Pentium 4-M**
  - **Complete New Design**
  - **Lower Power**
  - **Higher Speed**
    - **ie: Pentium-M 1.4 GHz outperformed a P4-M 2.4 GHz in one set of tests by 38%**

# Intel Centrino

- **Wireless Capabilities only include 802.11b**
- **Intel claims:**
  - **802.11a support is “months” away**
  - **802.11g will be available by the end of the year**



# Wi-Fi Zones

- **Areas where Wi-Fi Access is provided**
- **Often called Wi-Fi hot-spots**
- **The Wi-Fi Alliance provides free Wi-Fi Zone registration for providers**
- **<http://www.wi-fizone.org/>**



# MAN: Wi-Fi Zones

## ➤ Zones in Philadelphia

- **Loews Philadelphia Hotel**
- **Four Seasons Hotel**
- **Wyndham Philadelphia**
- **Embassy Suites Hotel**
- **Radisson Plaza Warwick Hotel**
- **Embassy Suites (Philadelphia Airport)**

## ➤ Zones in SF

- **27+ Coffee Shops**
- **20+ Hotels**
- **...**

# 802.11 - Conclusions

- **802.11a is the speed king**
  - **Higher cost**
- **802.11b is the current leader**
  - **Cheapest**
  - **Most Popular**
  - **Most Compatible**
- **802.11g is a good option (after July)**
  - **Most will be backward compatible with 802.11b**
  - **Should see prices comparable to 802.11b**
  - **Higher speed than 802.11b**

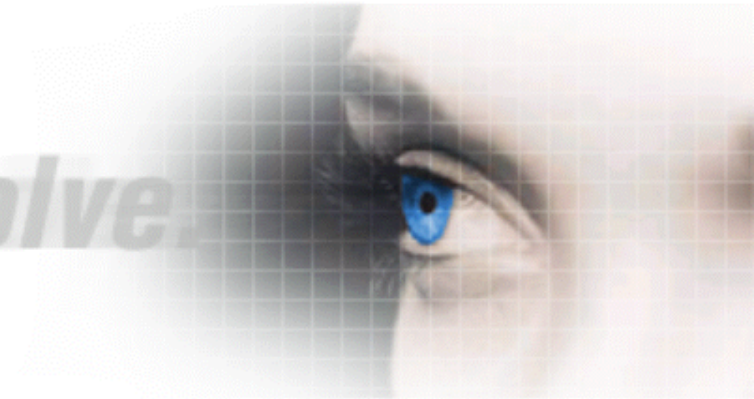
# Forward Looking

- **FUD = Fear – Uncertainty – Doubt**
- **Mesh Networks**
  - **Tank Farm**
- **802.11i**
- **How to get going**
  - **Requirements – Drive the need**
  - **Site Survey – Where to lay it out?**
  - **Access Point Network Design**
  - **Implementation**

# Mobility in Manufacturing



*imagine. develop. evolve.*



Omicron Consulting  
1500 Market Street  
Philadelphia, PA 19102



# Tablet PC Designs

OSIsoft UC 2003

## From Convertibles for Road Warriors



### Docked Mode

- Both will enable access to full keyboard, monitor and mouse
- Both enable multi-monitor configurations

### Laptop Mode

- Convertible: Attached keyboard
- Pure Tablet: Detachable keyboard

### Tablet Mode

- Convertible: Keyboard folds away
- Pure Tablet: Thinnest and lightest design

## To Pure Tablets for Corridor Warriors



# Not this again?

- **Commodity OS - XP**
- **Instant On**
- **Robust networking**
  - **LAN**
  - **802.11'x'**
  - **High-bandwidth**
  - **POTS**
  - **SMS**
- **Mainstream development tools**
- **Store and forward technology**
- **Useable handwriting recognition**
- **Useable recording and voice recognition**
- **Commodity HW from established players**
- **Built in everything**

**Why this time?**

# Tablet PC Drilldown

## Limited to a HW Needs

- Digitizer with active pen
- Support surprise removal from dock
- 2 second resume from suspend
- Legacy free (no serial or parallel ports)
- Supports both portrait and landscape modes
- Dedicated button for Ctl-Alt-Del (security key)

## Windows XP Tablet PC

- Windows XP Professional
- MS Journal Utility
- Handwriting Reco Engine
- Text Input Panel
- Speech Reco Engine
- Sticky Notes
- Gesture APIs
- Gesture Reco engine
- Stylus Drivers
- Ink Controls

# Manufacturing Areas

- **Control Networks**
- **Field Data Acquisition**
- **Knowledge Workers**
  - **Engineers & Management**
  - **Application Types**
    - **Alerts**
    - **Pages w/Snapshots**
    - **PDA w/ Graphics/trends**
    - **Tablet PC Full Function**
      - **Custom Application**
      - **PI-PB**

# Manufacturing & Tablet PC

- **Many Manufacturing Applications Have Touch Interface**
- **Store & Foreword**
- **PI API/SDK w/ Buffering**
- **PI-PB Runs Natively**
- **Demonstration**
  - **Scenario**
    - **Problem Investigation/Issue Resolution & Release**
  - **Users**
    - **Field Engineer**
    - **Plant Management**
    - **Engineering Supervisor**
  - **Technology**
    - **Instant Messages**
    - **Custom Application**
    - **ICE View**
    - **PI-PB Add-in**

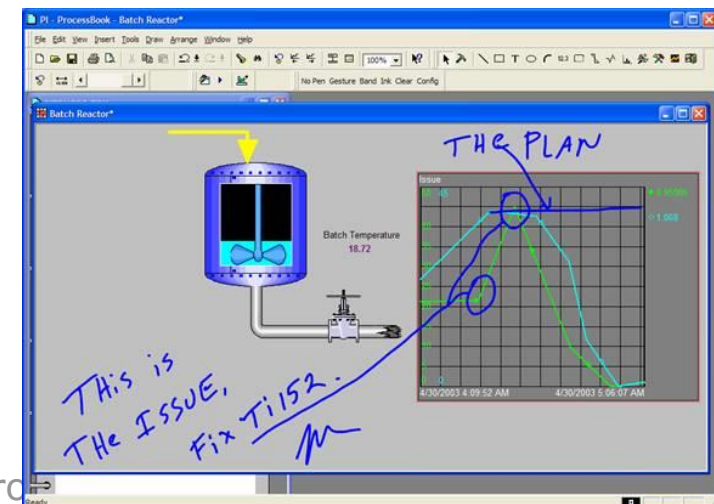
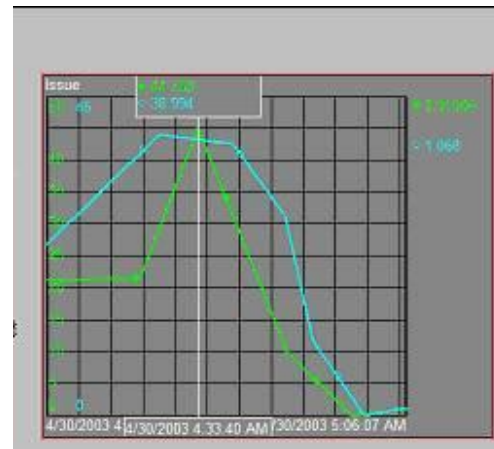
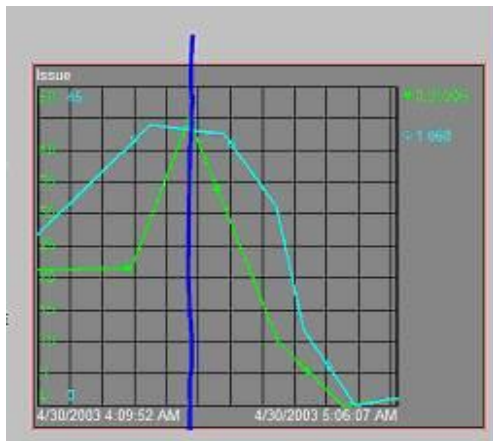
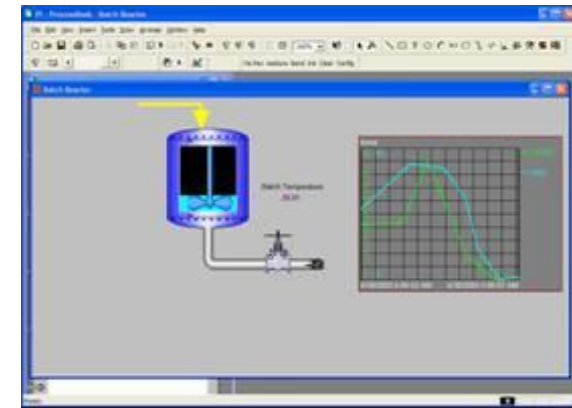
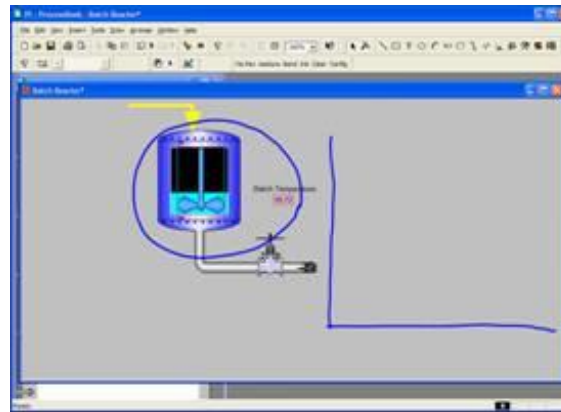
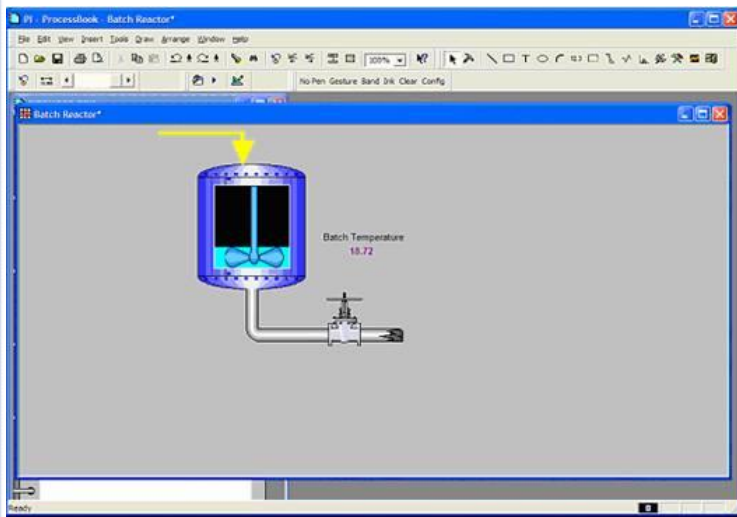
# Tablet PC Demo – Part 1

The collage displays several software interfaces from a Tablet PC demo:

- Approval Windows:** Two overlapping windows titled "Approval". Each has a "Status" dropdown set to "Retest Required", a "Notes" field, and a "Signature" field. The first window shows handwritten text "The Mixer is fouled." and a signature. The second window shows typed text "The mixer is fouled." and the same signature.
- Alert Window:** A small window with a blue header and a person icon. It says "Alert" in red, followed by "Production is CRITICALLY lower than plan. Review Here." with a link and the .NET logo.
- Chocolate Milk Factory Web App:** A screenshot of a web browser showing a "Chocolate Milk Factory" application. It features a "Factory Overview" diagram with tanks and trucks, and a table of "Active Units" with status indicators (Good, Bad, Shutdown).
- Mixer Shutdown Alert:** Another alert window with a blue header and a person icon. It says "Alert" in red, followed by "Mixer Shutdown, please stop your interview & investigate." and the .NET logo.



# Tablet PC Demo – Part 2



# Questions and Information

## ➤ John Matranga

- CTO Omicron Consulting

- 215-854-3485

- [jmatranga@omicron.com](mailto:jmatranga@omicron.com)

## ➤ Other References

- Network Magazine

- <http://www.networkmagazine.com/article/NMG20021203S0006>

- Dell

- [http://www.dell.com/us/en/gen/topics/vectors\\_2001-wireless\\_security.htm](http://www.dell.com/us/en/gen/topics/vectors_2001-wireless_security.htm)

- Microsoft

- <http://www.microsoft.com/tabletpc>



John Matranga  
[jmatranga@omicron.com](mailto:jmatranga@omicron.com)

Omicron Consulting  
1500 Market Street  
Philadelphia, PA 19102