

2003
OSISOFT USERS CONFERENCE

PI ProcessBook & PI ActiveView

Brian Bostwick
Omicron Consulting



ProcessBook & ActiveView 2.3

- *PB was release in August, 2002*
- *AV was released in February, 2003*
- *New Symbol Library*
- *Windows Certification*



ProcessBook version 3.0

A rich set of new features are planned

- *X-Y Plot Symbol*
- *Enhanced data presentation*
- *Module Database Integration*
- *Much more...*



X-Y Plot

- *Plot Tag vs. Tag*
- *Pair the X-Y data in various ways*
- *Interactively analyze the resulting plot*
- *Statistically analyze the data*



X-Y Plot Data Sources

Plot Numbers or Strings from:

- *Recorded Values in PI*
- *Interpolated Values from PI*
- *Calculations or Summaries from PI*
- *Relational Database Queries*



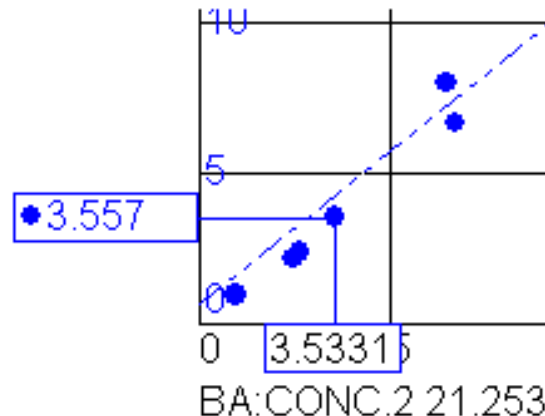
X-Y Pairing methods

- *X Data is recorded or interpolated data*
- *Y Data may be:*
 - *Paired with X data event by Time*
 - *Synchronize: query for Y using X times*
 - *Match: pair by time, exactly*
 - *Match or Previous: pair by time or use event just earlier*
 - *Match or Next: pair by time or use event just after*
 - *Paired with X data event by index:*
 - *Recorded: possibly time shifted*
 - *Interpolated: possibly time shifted*

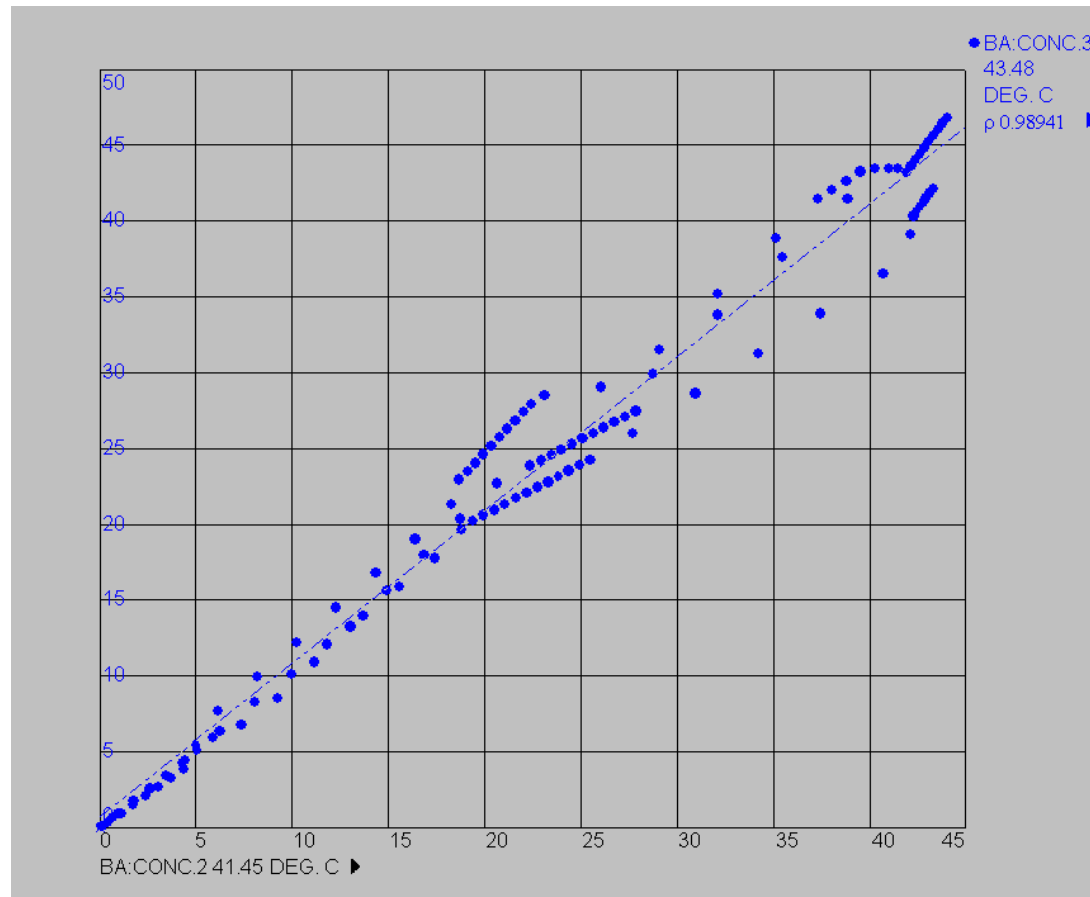


X-Y Plot Analysis

- *Data Cursor via mouse and arrow keys*
- *Zoom and un-Zoom*
- *Linear Regression by Least Squares*
- *Statistics and raw data tables*
- *Ad-hoc trend*



X-Y Plot Demo



PI ProcessBook & PI ActiveView

2003 OSISOFT USERS CONFERENCE SAN FRANCISCO CALIFORNIA USA

Enhanced Data Presentation

*Expose many PI 3 features by
connecting to PI with the PISDK*

- *Local or PI Server based time*
- *Improved Tag Search*
Including Module Alias Search
- *Single Sign-on through PI Trust*



Data Presentation

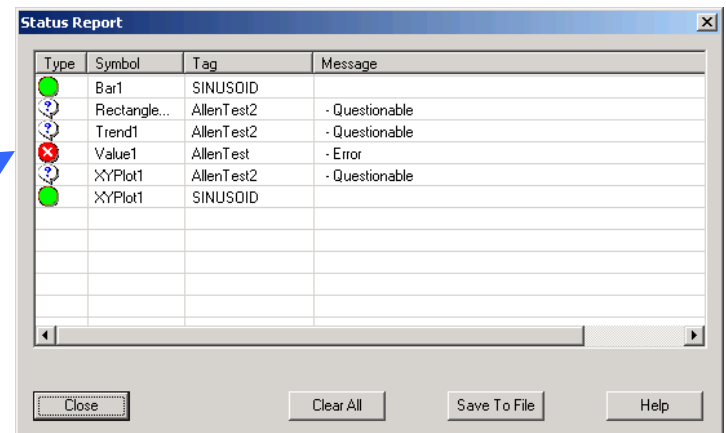
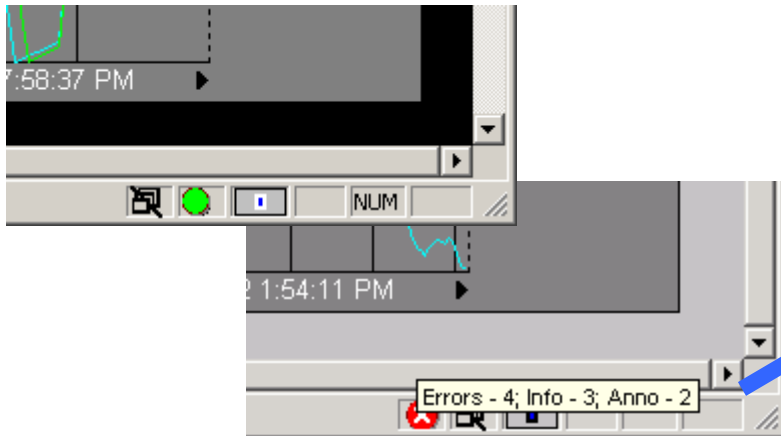
- *Sub-second timestamps*
- *String Tags*
- *Negative Integers*
- *Questionable and Substituted flags*



Status Reporting

Report information to help diagnose problems in the current display

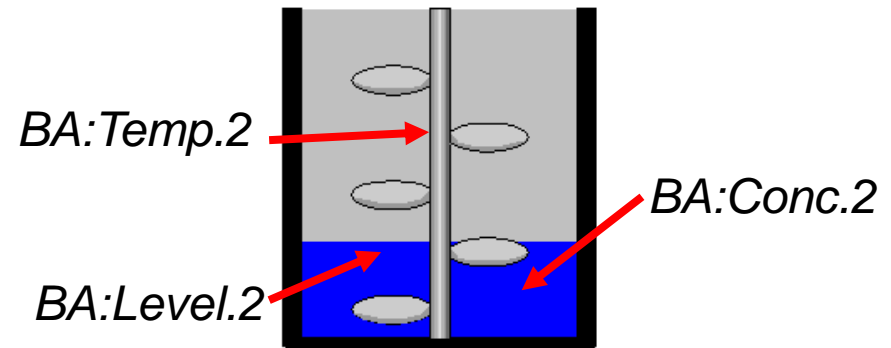
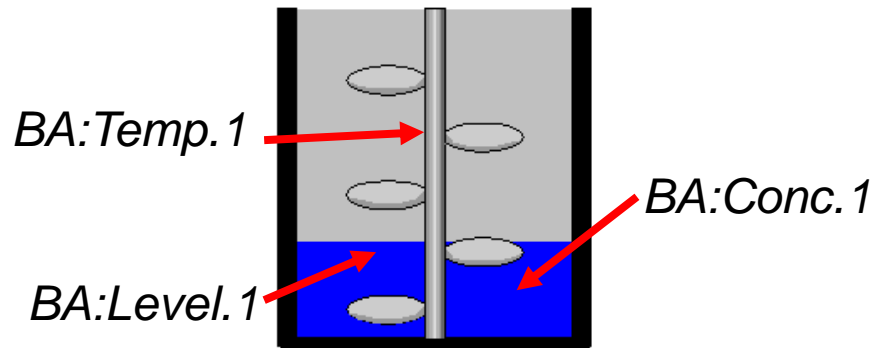
- *Enumerates all dynamic symbols in the display*
- *Highlights the current status with an explanation.*



Module Relative Displays

The Problem:

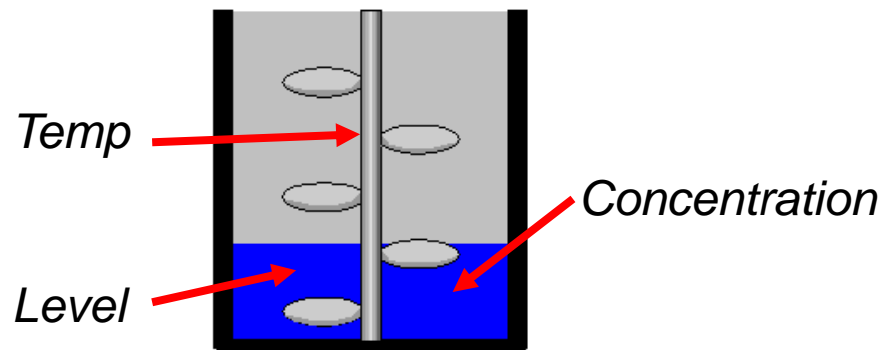
- *A site has 100 units, exactly the same*
- *Need to monitor each one*
- *PB demands creating a display for each unit*



Module Relative Displays

The Answer:

- Define the units as modules with aliases
- Select a “template” unit
- Design the display using aliases from the “template”
- Shift the context from one unit to another
- One display can be used to monitor all 100 units



Demo

PI - ProcessBook - [Display1*]

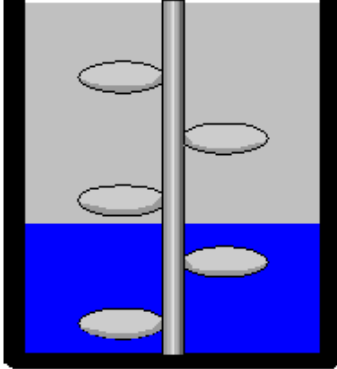
File Edit View Insert Tools Draw Arrange Window Help

100%

Unit Search

- bboostwick
 - %OSI
 - Network
 - OSI Refining Corp.
 - OSIUC03
 - Enterprise
 - Site_1
 - Area_A
 - Line_1
 - Unit_A
 - Conti
 - Conti
 - Unit_B
 - Unit_C
 - Line_2
 - Area_B
 - Site_2
 - rhubarb

Temp: 22.1726
Level: 37.7167



Concentration: 24.6255

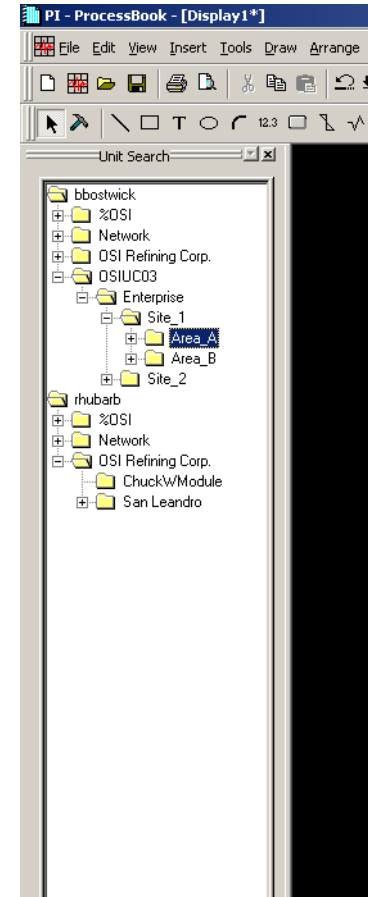


Further Enhancements

- *SVG as a first class file format*
- *Multistate feature for Toolbox Symbols*
- *Backwards compatible file formats*
- *Layers*
- *Symbol to Symbol Connectivity*

Automation Interface

- *Layers*
- *Connectivity*
- *Dock-able windows*
- *Named Values*
- *Custom Datasets*



PI ActiveView version 3.0

- *Support for SVG format*
- *Improvements to streamline installation*
- *Integrated Export utility*
- *Simplified Cab Wizard*



Wrap up

PI ProcessBook & PI ActiveView 3.0

A major version upgrade with compelling new features

- *ProcessBook will Beta this summer*
- *ActiveView later this year*



2003
OSISOFT USERS CONFERENCE

RtPm

RtPM:
***Using knowledge of real-time
events to take action and
improve profits.***