



2003
OSISOFT USERS CONFERENCE

PI ICE

Gregg Le Blanc
PI System Product Manager

Topics

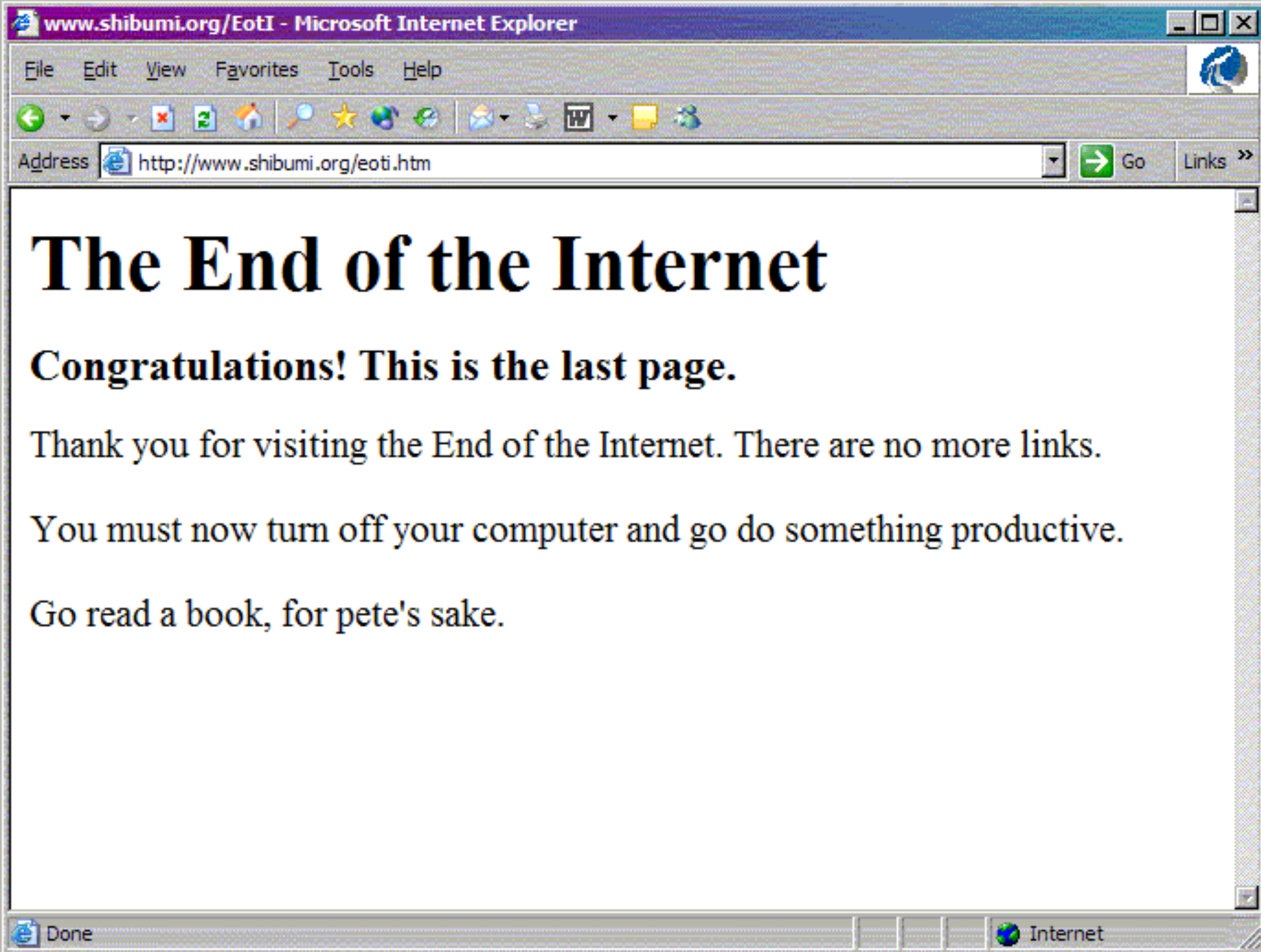
- *Web Applications & Content Ownership*
- *What's PI ICE?*
- *ICE's role in successful RtPM*
- *Who benefits from PI ICE*
- *How PI ICE ensures your*
 - *Security*
 - *Infrastructure performance*
 - *Future*
- *Penguins?*



The Web and You

- *The Truth is out there...*





The End of the Internet

Congratulations! This is the last page.

Thank you for visiting the End of the Internet. There are no more links.

You must now turn off your computer and go do something productive.

Go read a book, for pete's sake.

The Web and You

- *The Truth is out there...*
- *Here are two key truths*
 - *Your business needs evolve.*
 - *The Web is a transient environment.*



Common Questions...

- *What is a Web application?*
- *Where does a Web application fit?*
- *What's the difference between a Web application that works vs. one that helps me work?*



Web Applications Defined

- *Web application attributes*
 - *Development*
 - *Build Time*
 - *Run Time*
 - *Administration*
- *Differentiators*
 - *How are these tasks handled?*
 - *Product vs. Project*



Packing for the Web

- *Decide what to take with you*
- *Some things are appropriate*
 - *Displaying disparate data*
 - *Doing casual analysis*
- *Some things require a desktop app*
 - *Root cause analysis*
 - *High levels of user interactivity*



Content Ownership

- *Content owners already know*
 - *User requirements*
 - *Development roadmap*
 - *Technology roadmap*
 - *Migration plan*
- *Users drive Web application development*



Core Competency

- *Someone else builds the platform*
- *Content owners provide the targeted application*



The ICE Web Application

- *The PI Interactive Configurable Environment*
- *ICE is a data driven Web application for creating displays that are useful to a diverse audience.*
 - *No programming required*
 - *Low client demands*
 - *Large data scope*



The ICE Roadmap

- *Longevity*
 - *Built on standards*
 - *Built to supplement portal offerings*
- *Functionality*
 - *Strong connection to PI System infrastructure*
 - *Extensible to related data sources*
- *Flexibility & Security*
 - *User interactivity and configurability*

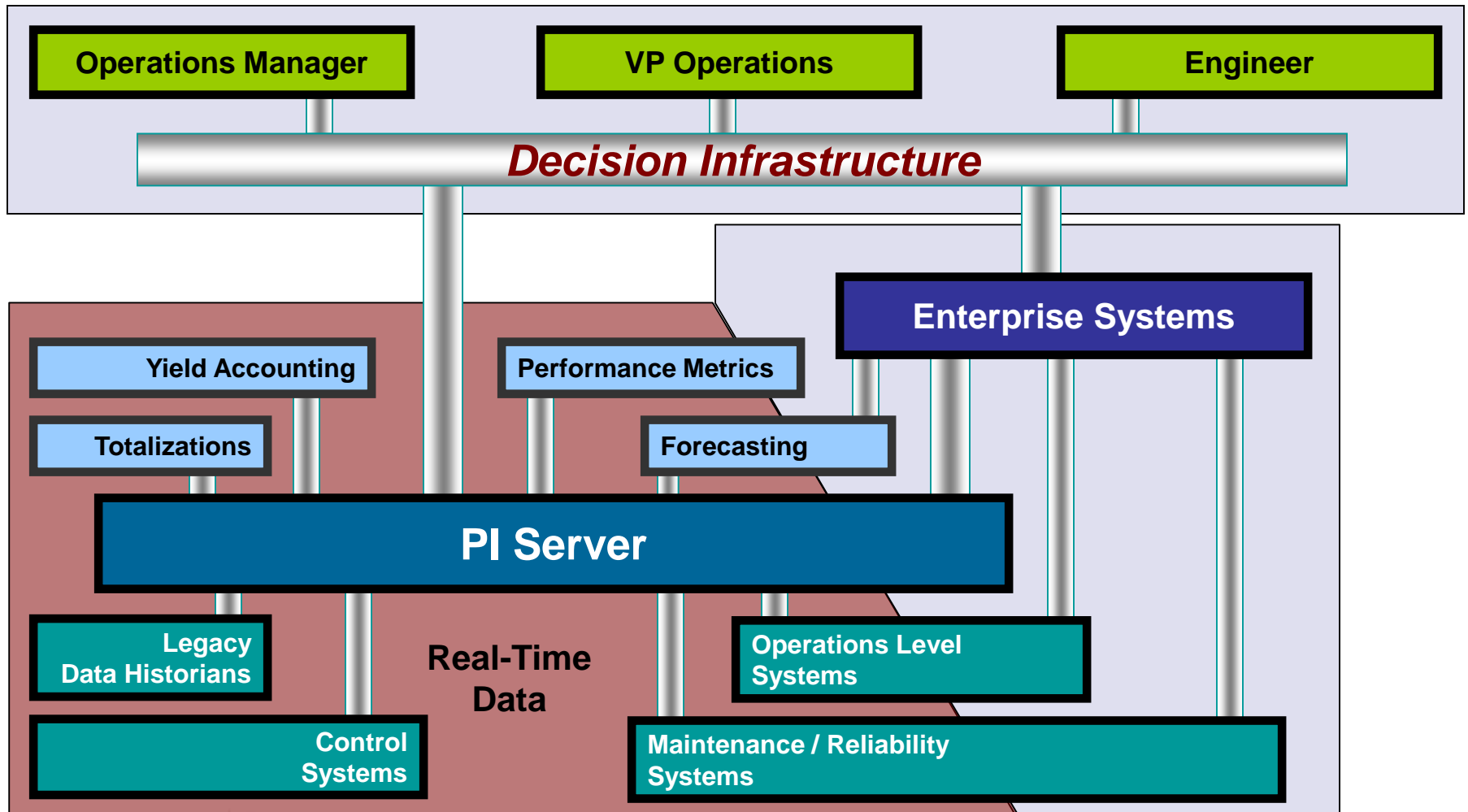


ICE's Role in Successful RtPM

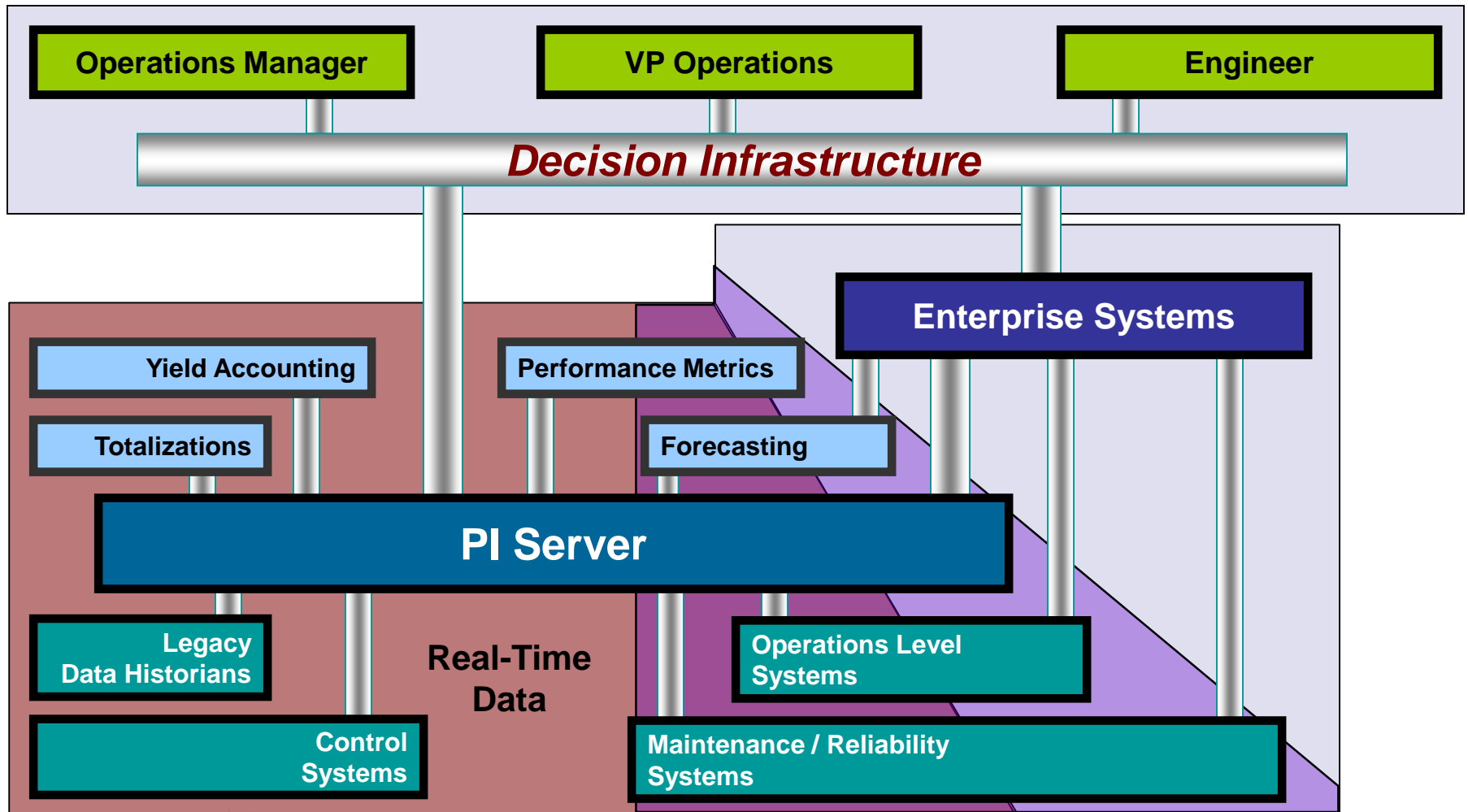
- *Expand Your Data-Scope*
 - *More data to more people*
 - *Access to more data sources*
- *Right Time Decision Making*
 - *Faster decisions*
 - *Decisions informed by real-time data*



Data Domains

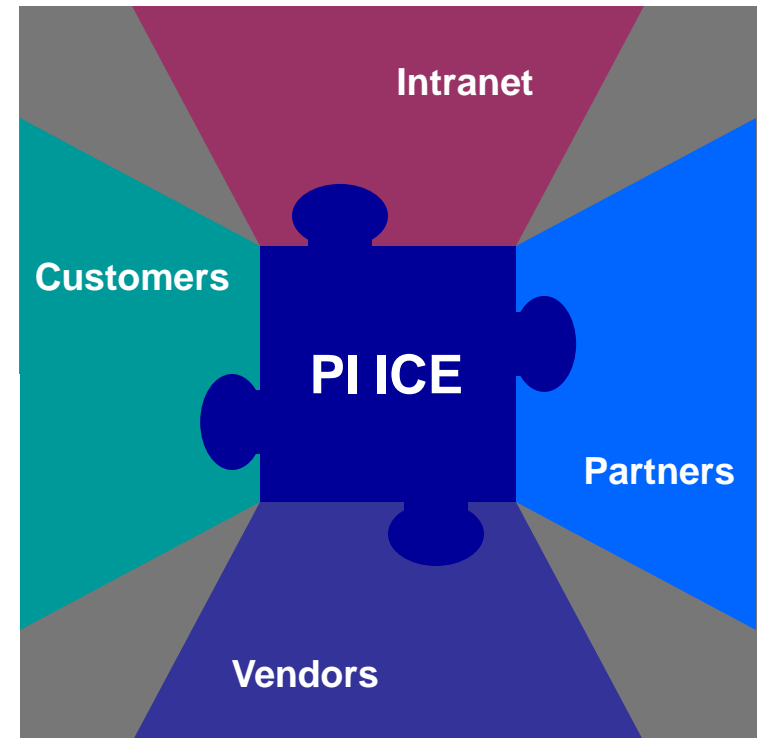


Related Data Domains



PI ICE – Where Decisions Happen

- *ICE serves different user types*
- *Roles exist within user categories*
- *ICE is a “Decision Point” for users*



Building ICE Displays

- *ICE lets users interact in real time with*
 - *Trends*
 - *Real-time snapshots of data*
 - *Historical data tables*
 - *Live SVG graphics*
 - *Visual numeric scorecard displays*
- *Using data in*
 - *PI data*
 - *Relational databases*
 - *Parts from other providers*
 - *Existing Web content*



A Look at PI ICE

Navigation
between
displays

SVG
Selection

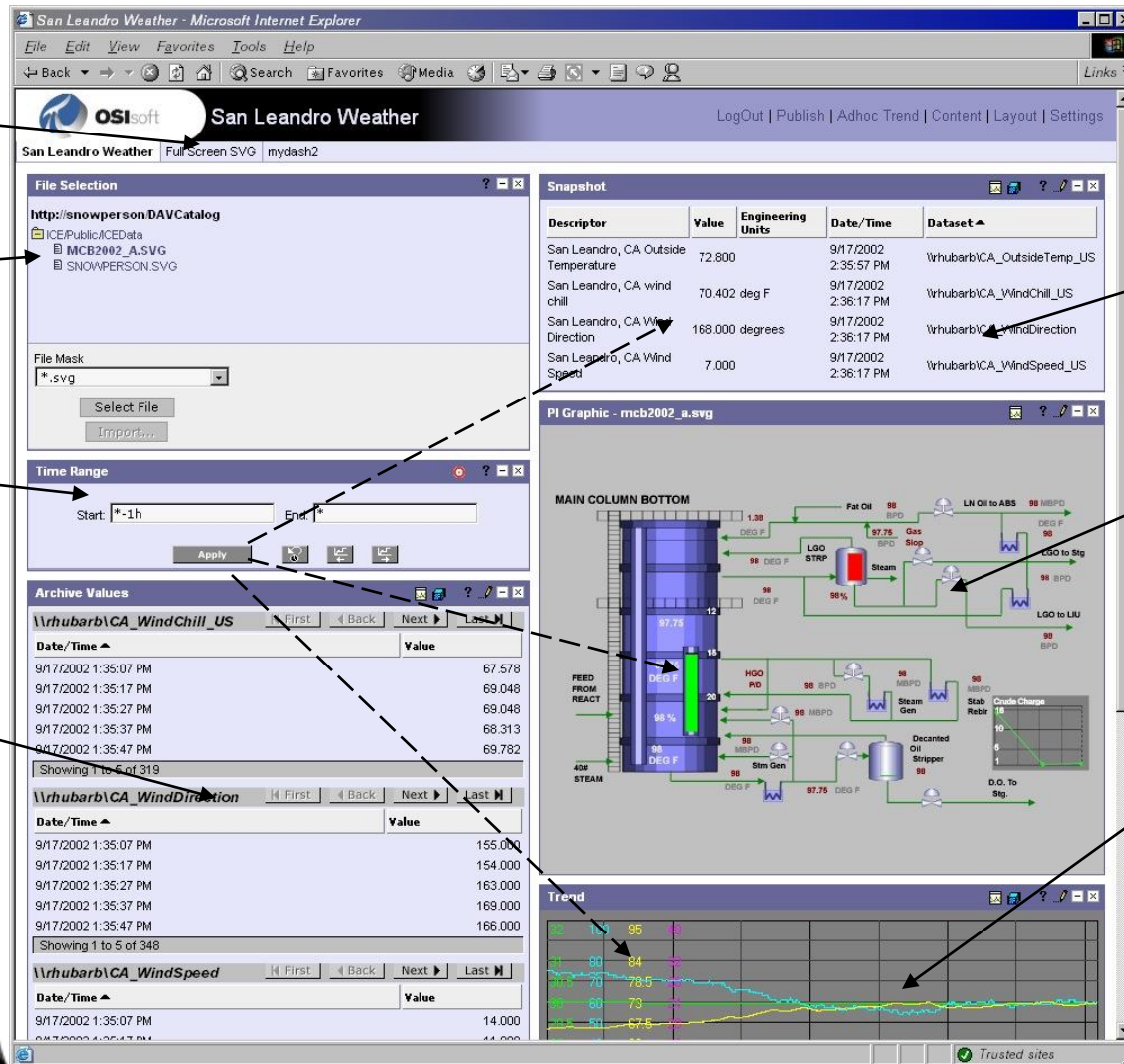
One part can
influence many

Archive Data
from the
PI System

Snapshot
Data from the
PI System

ProcessBook
Display as an
SVG

Trending from
the PI System



So What's New?

- *PI ICE 1.0*
 - *Released Q4 2002*
 - *Basic functionality for PI System data*
- *PI ICE 1.1*
 - *Beta post Users Conference*
 - *Relational and more PI data*
- *PI ICE 2.0*
 - *Work in progress*
 - *Features .NET and new Microsoft technology*



Demo



PI ICE and Web Applications – Gregg Le Blanc

2003 OSISOFT USERS CONFERENCE SAN FRANCISCO CALIFORNIA USA

PI ICE 1.1

- *New Part*
 - *The Table Web Part*
- *New Functions for Familiar Parts*
 - *Summaries for the Snapshot part*
 - *ProcessBook DataSets in SVG's*
- *Minor Enhancements*

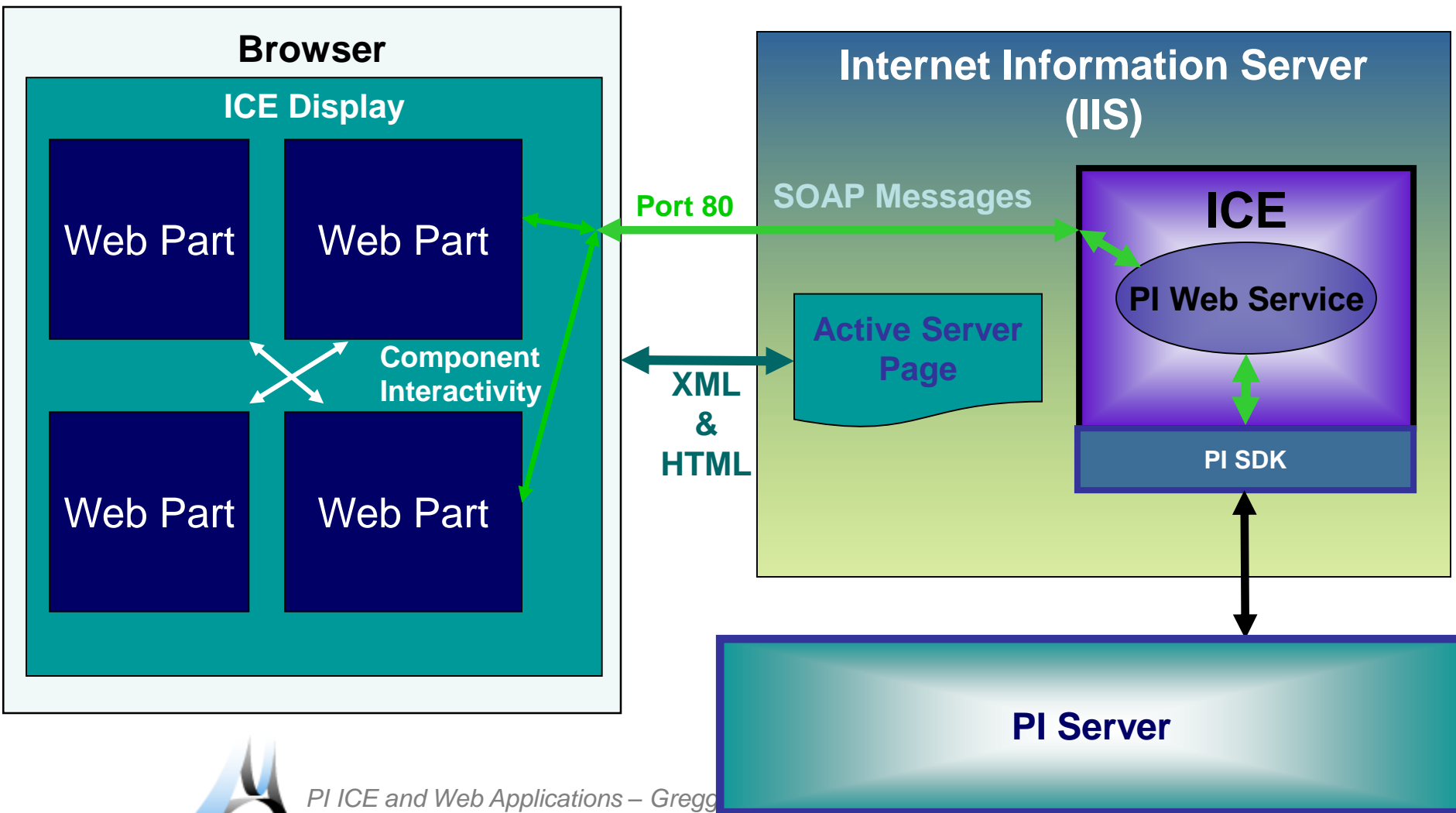


Great Part, Innocuous Name

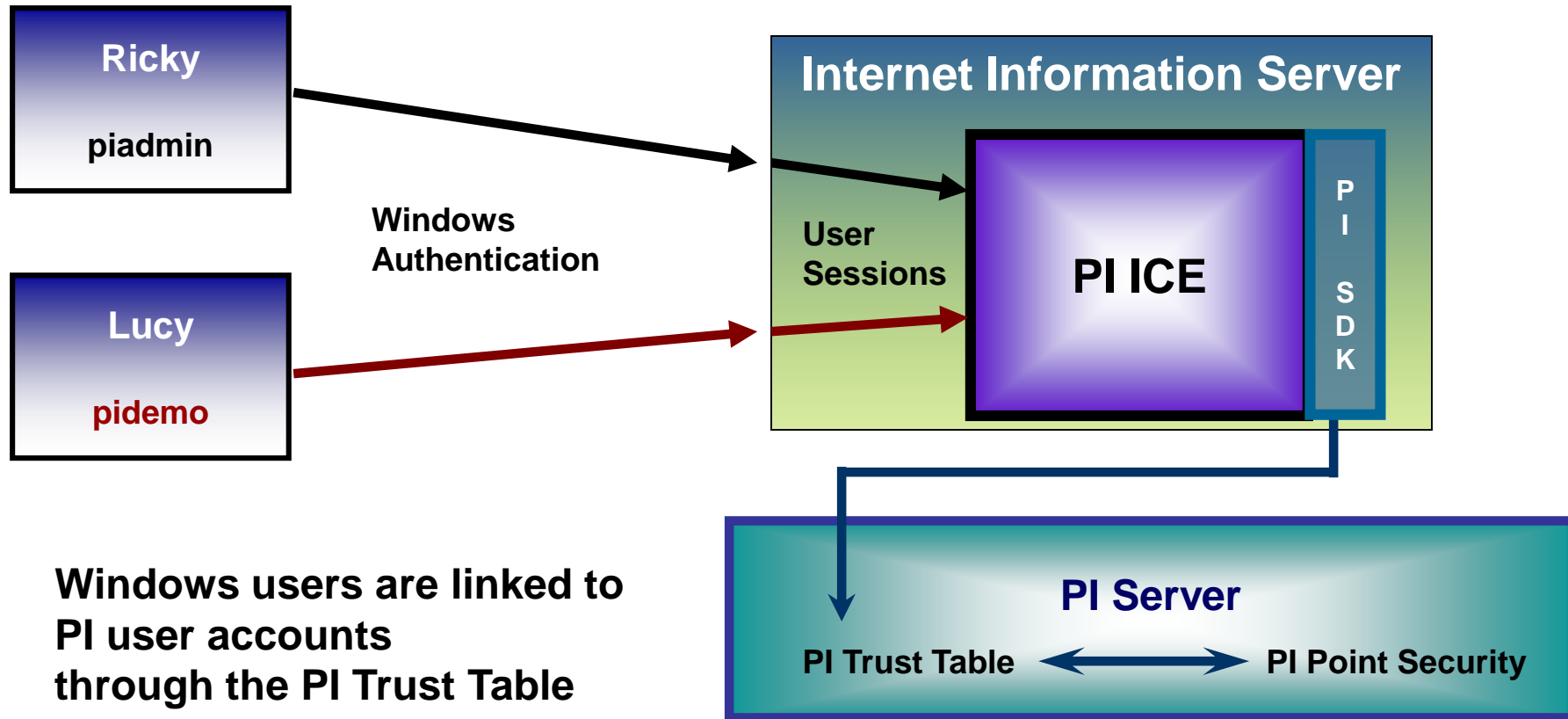
- *The Table Web Part*
 - *Sort by column*
 - *Paging through large numbers of rows*
 - *Number formatting*
 - *Justification*
 - *Horizontal bar graph*
 - *Specify data source on server*
 - *Hyperlinks from cells*
 - *Images in cells for hyperlinks*
- *Cells that change color based on value*
- *Run-time placeholders*
- *Show PI data in some cells*
- *PI Tag placeholders (RKE)*
- *Drag-and-drop to trends (using ModuleDB)*
- *File Select cells*
- *Respond to time ranges*
- *Real-time updates (SQL, PI, or both)*



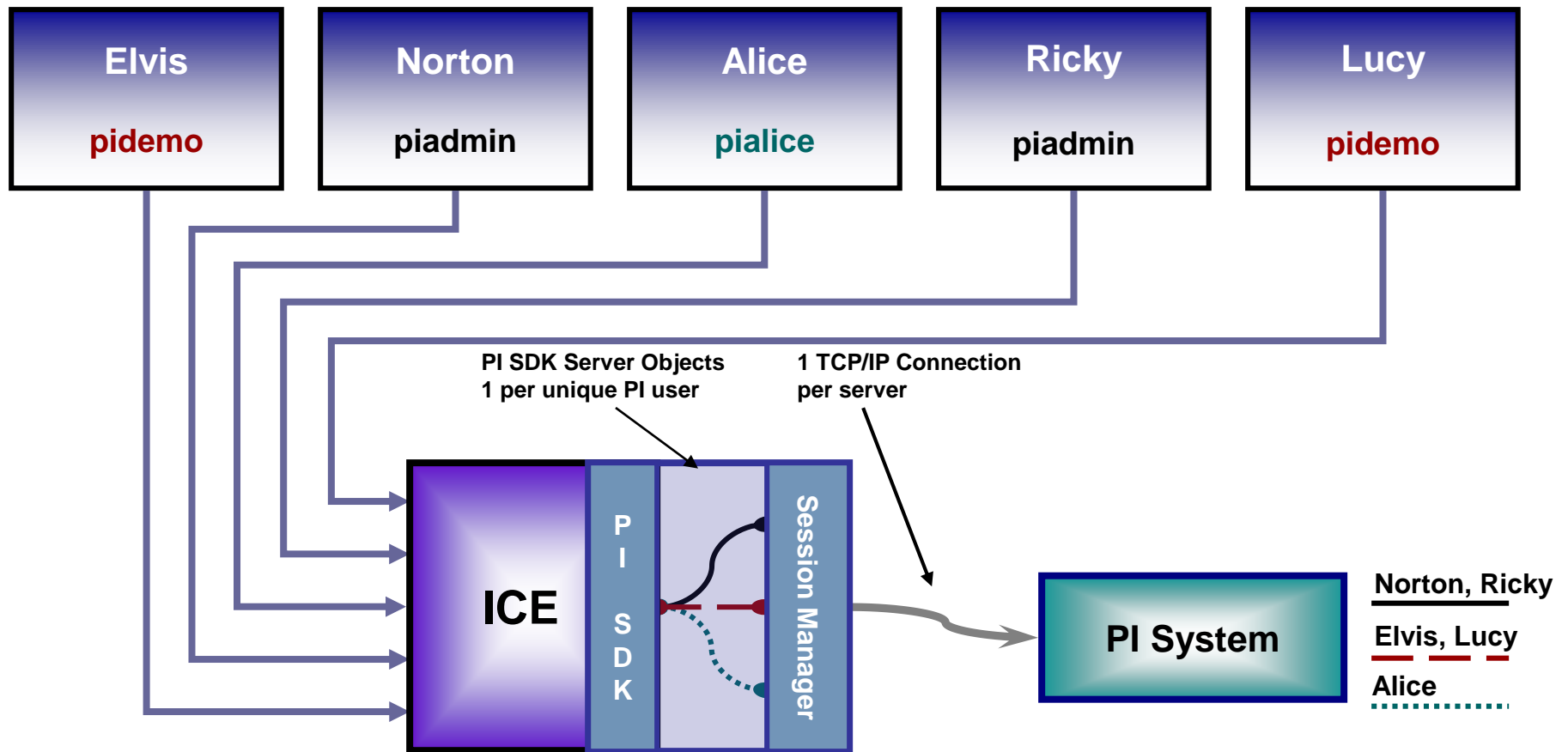
How ICE Gets Data



ICE Delivers Data Securely



Connection Diagram



PI ICE 2.0

- *New technology*
 - *.NET*
 - *Windows SharePoint Services*
 - *Removal of Client Java Requirements*
- *More clients will be supported*
- *Scalability*
- *Redundancy*
- *ToolKit will be available to users*



Windows SharePoint Services

- *Built into Windows Server 2003*
- *Microsoft Office integration*
- *Collaboration Services*
- *Robust infrastructure*



The Look of PI ICE 2.0

- *Screenshots?*



PI ICE and Web Applications – Gregg Le Blanc

2003 OSISOFT USERS CONFERENCE SAN FRANCISCO CALIFORNIA USA

Web Part Page - Microsoft Internet Explorer

File Edit View Favorites Tools Help

Back Forward Stop Home Search Favorites Media Mail Print Recycle Bin People

Address <http://wssbase/Shared%20Documents/ICE%202.0%20Alpha%201%20Archive.aspx?PageView=Shared> Go

Home Documents and Lists Create Site Settings Help

ICE 2.0 Alpha 1 Archive Modify Shared Page

Time Range

Start Time: End Time:

Tag Search

Servers:

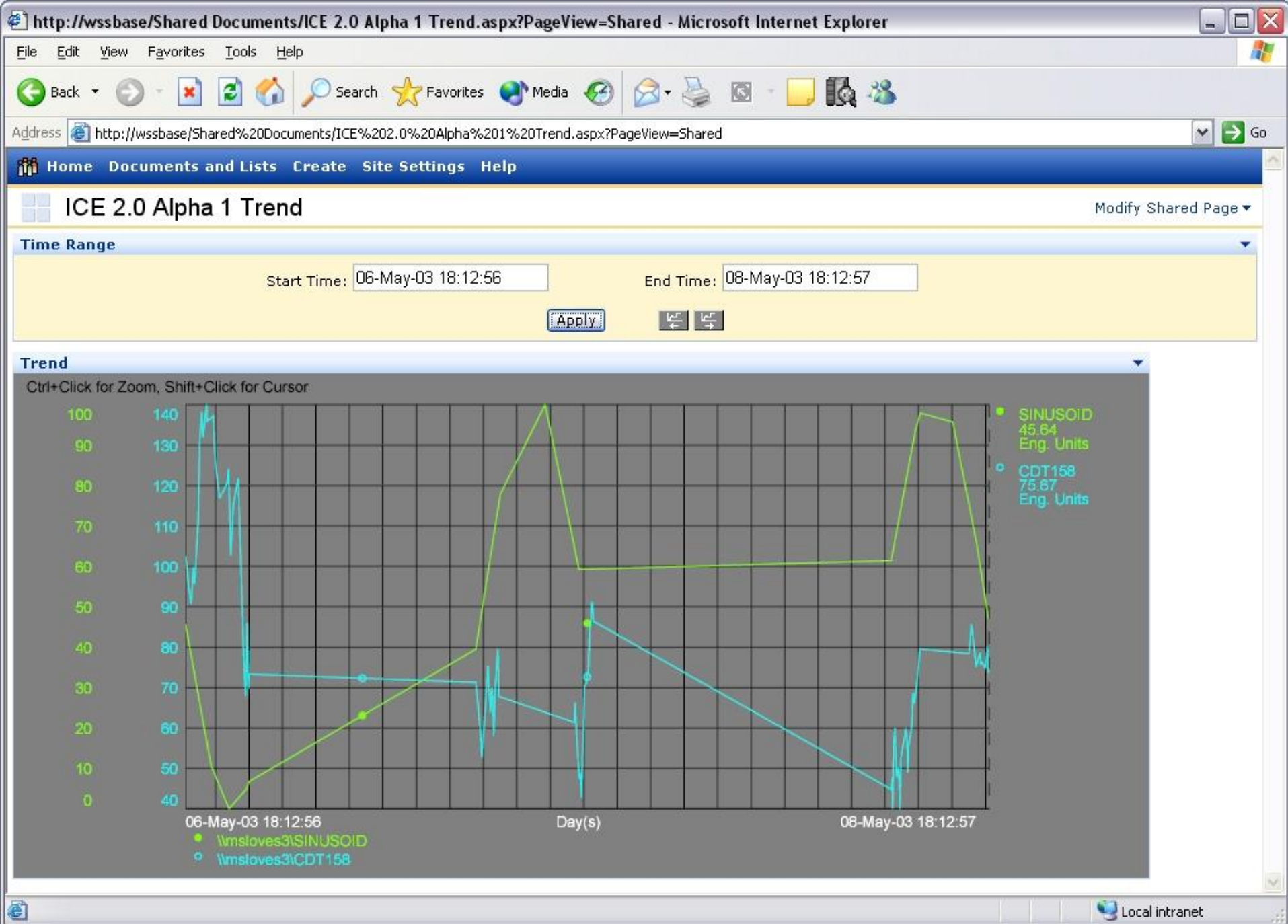
Name Mask:

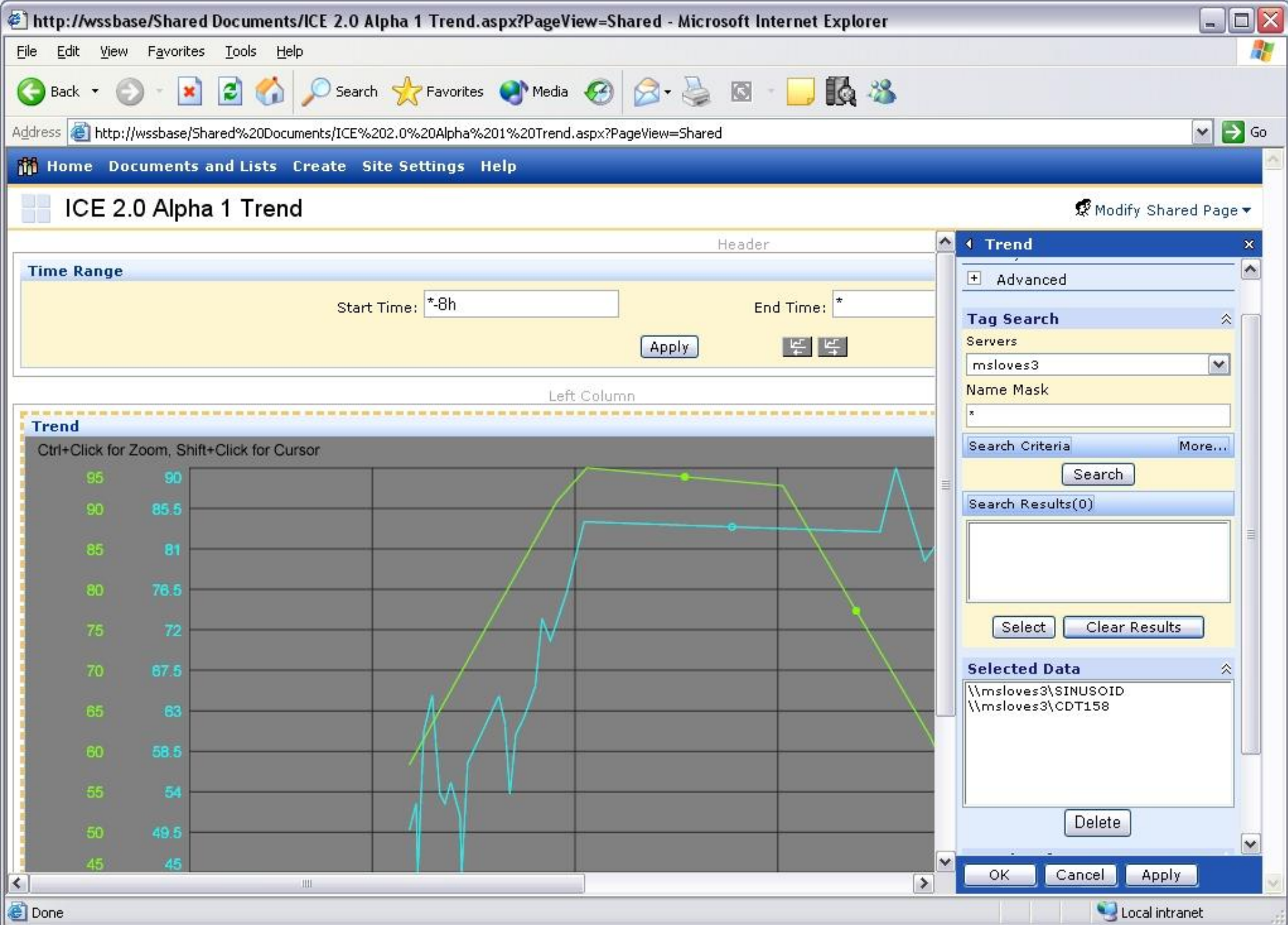
Search Results(0)

Archive Tables

Time	Value
\\msloves3\CDT158	
5/8/2003 2:05:30 PM	80.66671
5/8/2003 5:00:30 PM	79.69621
5/8/2003 5:10:00 PM	85.80306
5/8/2003 5:27:00 PM	76.94068
5/8/2003 5:37:30 PM	79.33585
\\msloves3\SINUSOID	
5/8/2003 2:07:00 PM	94.7466
5/8/2003 4:03:00 PM	92.63219
5/8/2003 5:30:00 PM	62.9413

Done Local intranet





 Modify Shared Page ▾

—

1

—

10

1

Conclusion

- *Web applications*
 - *Product vs. Project*
 - *One that works vs. helps you work*
 - *Let your business remain flexible*
- *ICE brings you*
 - *Flexibility, Functionality, and Security*
 - *A future roadmap*



2003
OSISOFT USERS CONFERENCE

RTMPM

