

# Visualizing Performance Management

Managing Information  
with RtPortal

*Gregg Le Blanc - OSISOFT*

*Brian Bostwick - Omicron*

Copyright c 2004 OSISOFT Inc. All rights reserved.



# OSISOFT USERS CONFERENCE 2004

D I S C O V E R   Y O U R   P O R T A L   T O   P E R F O R M A N C E

# The “Digital Tidal Wave”

Dr. Donald Paul – VP & CTO, ChevronTexaco

- Moore’s Law
  - Computer power doubles every 18-24 months
- Parkinson’s Law of Data
  - Data expands to fill available storage capacity
  - Memory usage doubles every 18 months
- And...
  - “Data is your only weapon for improved performance.”
    - » Dr. Donald Paul – VP & CTO ChevronTexaco
- You want more **useful** data

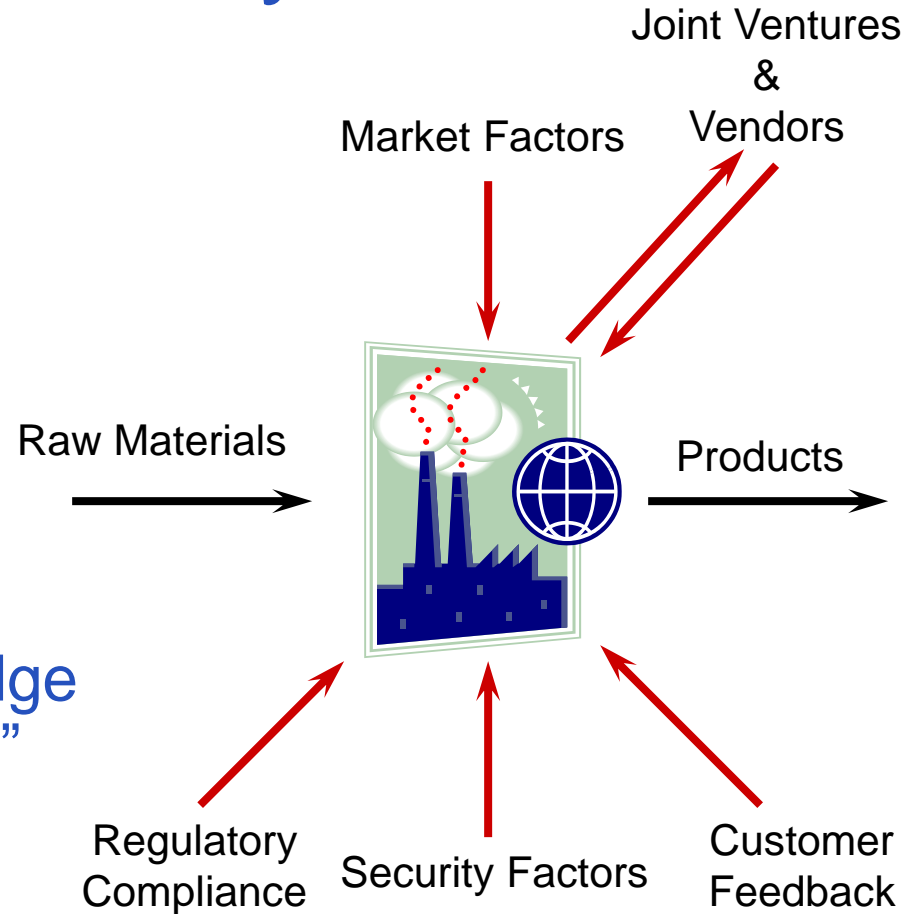
# Taking Advantage of the Data

- You're not in the data management business
- You have lots of technology already
- You must constantly:
  - Do more with less resources
  - Work strategically and tactically
  - Do everything securely
  - Do it now!



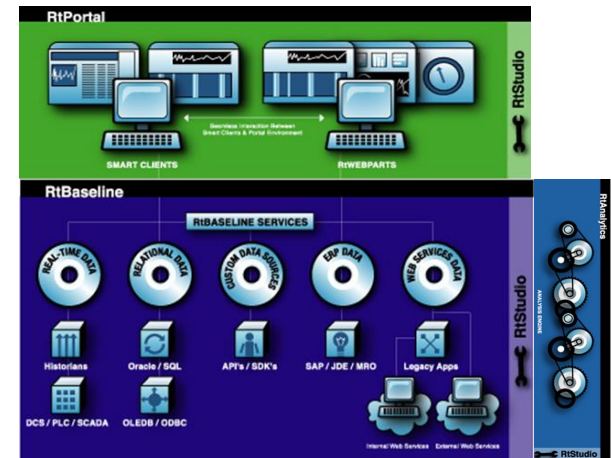
# Managing Data in the Enterprise Ecosystem

- Use in-place technology to your advantage
- Establish practices and culture for collaboration
- Institutionalize distributed knowledge and “best practices”



# The RtPM Platform

- Designed to manage your “Data Tidal Wave”
  - RtBaseline makes it available
  - RtAnalytics refines it
  - RtPortal puts it in
    - The right hands
    - The right context
    - A manageable environment



- Result: You are can take action

# RtPortal for Collaboration & Communication

- Requirements
  - Leverage your software infrastructure
  - Foster culture for collaboration
    - Interaction between departments, sites, and roles
- Results
  - Enterprise Transparency / Visibility
  - Corporate Agility

# But wait...

- What about PI ICE?
- Why RtPortal?
  - Universal access to data
    - Transactional and Real-time
  - Microsoft's SharePoint Infrastructure

The right data for the right people,  
The right tools for the right roles.



# The SharePoint Infrastructure

- Fully .NET
  - Easier to build
  - More enterprise features “baked-in”
- Linked with the Windows Server System
  - Takes advantage of your existing infrastructure
- Better use of client and server resources
- Blends the user desktop experience between client applications and the browser



# Windows Server System 2003



DISCOVER YOUR PORTAL TO PERFORMANCE

# SharePoint Products And Technologies



## **Smart *Places***

- Scalable Workspace Platform
- Document Collaboration And List Management
- Web Part Infrastructure
- OOB Team Collaboration Solutions

## **Smart *Organizations***

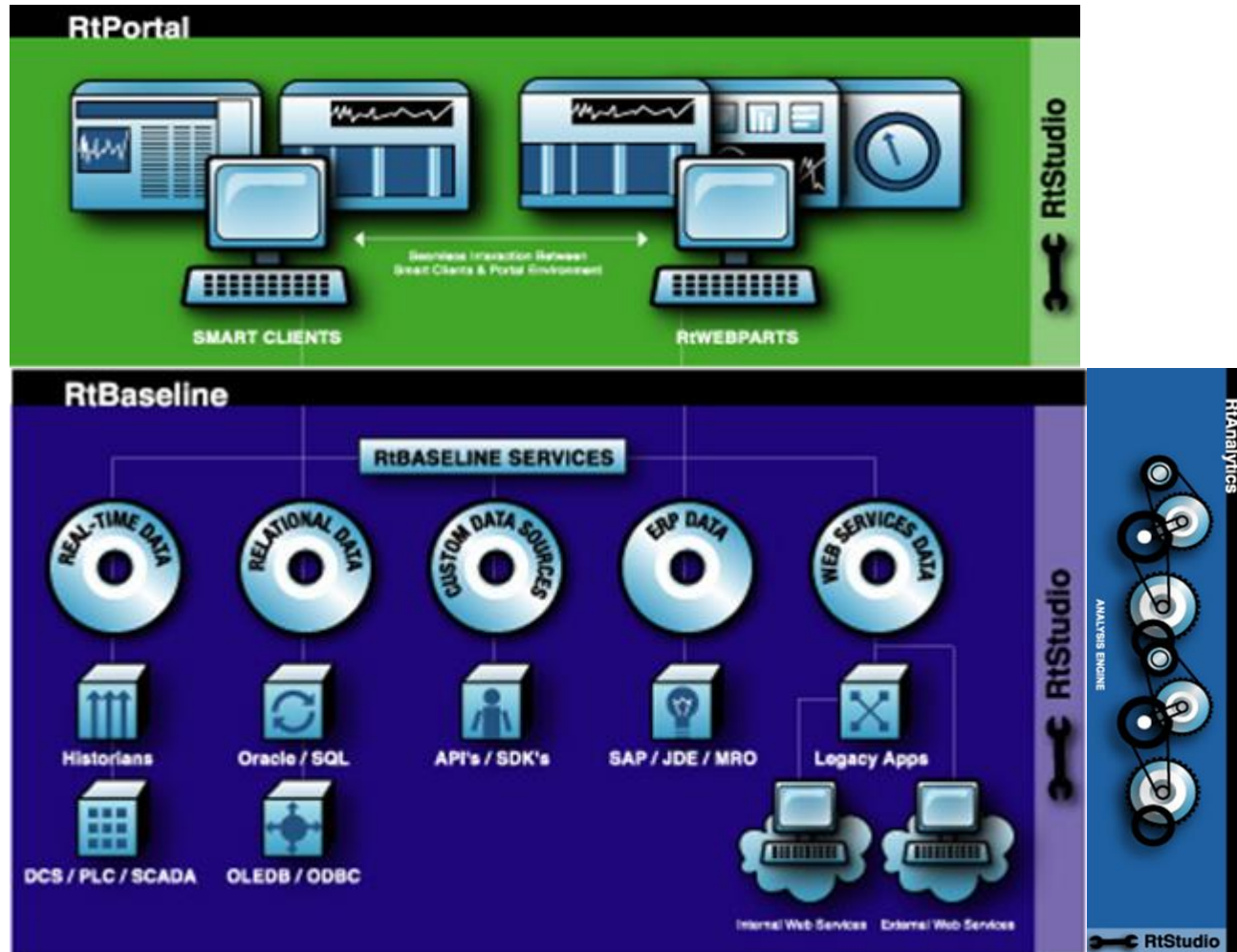
- Single Point Of Access To People, Teams, Knowledge, And Applications
- Integrate, Organize, Connect, And Present Corporate Resource
- Built On SharePoint Services' Sites, Lists, Libraries, Web Part Pages

# The Information Worker Desktop

- SharePoint
  - Combines the desktop and the browser
  - Central source for content
- RtPortal
  - Combines OS/soft clients with the browser
  - Integrates time series content
- One version of the truth



# OSIsoft RtPM Architecture



# RtPortal Includes

- OSIssoft client tools and Web Parts
  - RtWebParts
    - RtTable
    - RtGraphic
    - RtTrend
    - RtTimeRange
    - RtGauge
    - RtChart
    - RtTreeView
    - More later...
  - Smart Clients
    - ProcessBook
    - DataLink
    - More later...



# RtPortal Architecture

## RtPortal

### Smart Clients

Visualization  
Root Cause Analysis  
Planning  
Content Authoring

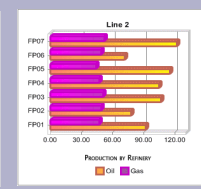
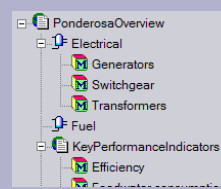
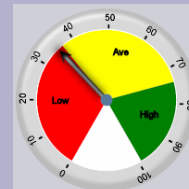


### RtWebParts in SharePoint



Seamless  
Interaction  
Between  
Smart Clients &  
Portal  
Environment

### User Configured RtWebParts



## RtBaseline

## RtBaseline Services

# Features & Benefits

- **Context**

- Clients and RtWebParts make extensive use of Module Database



- Coordinate information through logical or physical relationships

- **Event Based Service Oriented Architecture**

- RtBaseline Services delivers information
  - Web Services
  - .NET Assemblies



- Updated information reaches your desktop automatically

- **Content Management**

- Smart Clients seamlessly interact with the Web



- Users always have the right tools to analyze, view, or author rich content

## Page 10

---





1

— 89

Three circular gauges are shown, each with a different colored needle and a different scale. The first gauge has a green needle pointing to 90 on a scale from 0 to 90. The second gauge has a red needle pointing to 360 on a scale from 0 to 450. The third gauge has a yellow needle pointing to 70 on a scale from 0 to 80.



# RTFPM

## Demos



Copyright c 2004 OSIssoft Inc. All rights reserved.

# OSISOFTUSERS CONFERENCE 2004

D I S C O V E R   Y O U R   P O R T A L   T O   P E R F O R M A N C E

# RtPortal's Role in Successful RtPM

- Expanded Data-Scope
  - More data to more people
  - More data to the right people
  - Access to more data sources
- Leverages existing infrastructure



# RtPortal's Role in Successful RtPM

- Access to Consolidated Process & Business Data
  - Store, search, and share information effectively
    - Both structured information and unstructured
  - Capture expertise and institutionalize best practices
- Right Time Decision Making
  - Through collaboration
  - Decisions informed by operations data
  - Event driven infrastructure



# RtPortal: Visualizing Performance Management



Copyright c 2004 OSISoft Inc. All rights reserved.

**OSISOFT** USERS CONFERENCE **2004**  
D I S C O V E R   Y O U R   P O R T A L   T O   P E R F O R M A N C E