

Taking better and faster operational decisions; real time geo



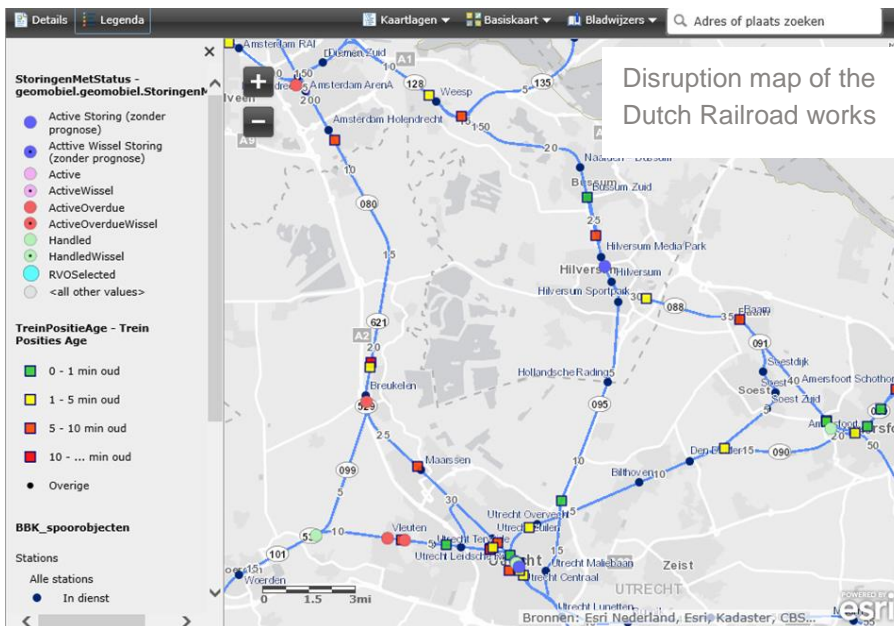
Experience the commitment®

Real Time Geographics are essential for operational control. CGI has advanced knowledge and references in this specific Geo-Information area.

Customers like ProRail and TomTom are confirming; Real Time Geo improves decision making.

The role of geographic information in operational systems.

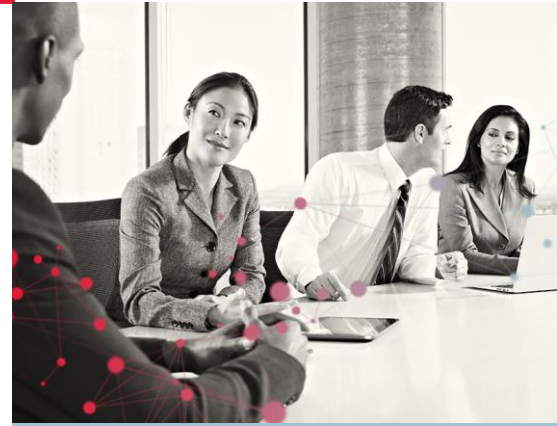
For companies running network operations (rail, road or utility) an operational view on the status of their network is very common. This usually is a schematic (SCADA) view which helps to evaluate the actual status of important network components. Networks always have a geographic reality because of their spatially spread layouts. For instance the actual status of maintenance crews, the static assets with a real time status and other external real time influences (weather, water levels, etc.) play their role in the operational picture.



Decision support systems take all these different data streams into account are usually complex and expensive. Actually manual interpretation of multiple systems and screens is the day-to-day way of working.

GeoEvent Processor

New technology makes it possible to use the location of different assets and relate them to each other in a real time environment. CGI works with Esri's GeoEvent Processor to make this happen. This tool uses typically unrelated inputs and raises triggers and alarms on basis of geographical business rules. A moving object that accesses the proximity of an artefact or situation



BENEFITS:

- Geographical data as the integration layer for real time information
- Highly interactive and flexible interface
- Based on proven technology (COTS)
- Tracking and tracing, combined with geographic triggering such as geo fencing
- Alignment with other CGI Partners
 - Esri
 - OSI Soft
 - Tomtom Telematics
 - Undagrid



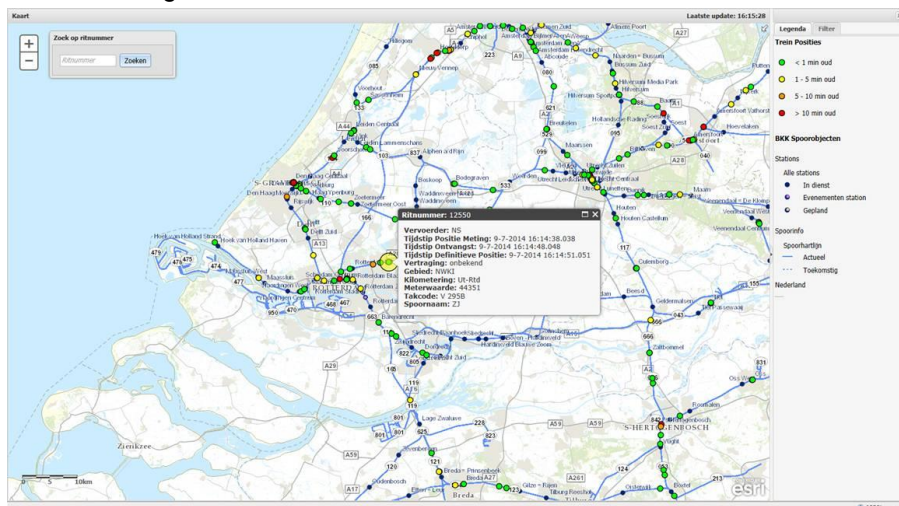
with a certain status will trigger an output. This output can, but not necessarily, be displayed as a map.

Multiple views

Web interfaces, Mobile apps, versatile views (geographic and schematic) are available when working with a real time geographic kernel like Esri's GeoEvent Processor for ArcGIS. Whether we use an Operations Dashboard or a simple HTML5 webpart, we keep seeing the same rich supportive data. CGI has the knowledge switch from geographic views to schematic views and vice versa.

ProRail and NS's PoC "Eenduidig Treinbeeld" (unified view on trainlocations)

CGI delivered a proof of concept to ProRail and the Dutch Railroad Services (NS) in which real time train locations are mapped on the position of the real tracks. The GPS position is being improved by the fact that we also know on which track the train is running. In the next step an integration with real time statuses of signals and switches will be made.



CGI's partners

CGI has partnerships with distinguished companies in the real time domain. To integrate their information in solutions based on Esri's GeoEvent Processor, CGI developed dedicated connectors for TomTom Webfleet, OSI PI and Undagrid..

Winner of 2014 Esri Partner Conference Award

Each year Esri awards distinguished partners who exhibit innovative and practical uses of the ArcGIS platform's latest features and take geographic visualization to a higher level. CGI is recognized for the 2014 "Internal web Application" award for the SIGMA system, which was developed together with ProRail, the organization responsible for the development, maintenance and safety of the Dutch railway network.

Jort Engels, Partner Manager of Esri says, "This award is a recognition of the partnership between CGI and Esri Netherlands. This shows that our partner uses the power of the ArcGIS platform and creates value for its customers. In the future we will continue to work with CGI to deliver solutions to our customers."

ABOUT CGI

Founded in 1976, CGI is a global IT and business process services provider delivering high-quality business consulting, systems integration and managed services. With 68,000 professionals in 40 countries, CGI has an industry-leading track record of delivering 95% of projects on-time and on-budget, aligning our teams with clients' business strategies to achieve top-to-bottom line results.



For more information, contact us at info.nl@cgi.com or visit www.cginederland.nl