



OSIsoft.

REGIONAL SEMINAR

2012

A P A C

The **Power** of **Data**

MALAYSIA



View the Whole Picture with an Asset-Based Approach

Presented by **Gina Laviste**
Sales Support Engr, OSIsoft



Why look at Assets?

Why Assets?

- You think about:
 - How well are your tanks being utilized?
 - How well is that boiler running?
 - Are things going as I expect?
- Making data actionable includes providing ways to see more than individual data points

A Complete Picture of Your Asset

PI Tags

- Inlet pressure
- Inlet flow
- Ambient temperature

PI Tags

- Exhaust temperature
- Exhaust flow
- Measured MW output

External Databases

- Performance curves
- Last service date
- Design documents
- Inspection best practice

Calculations

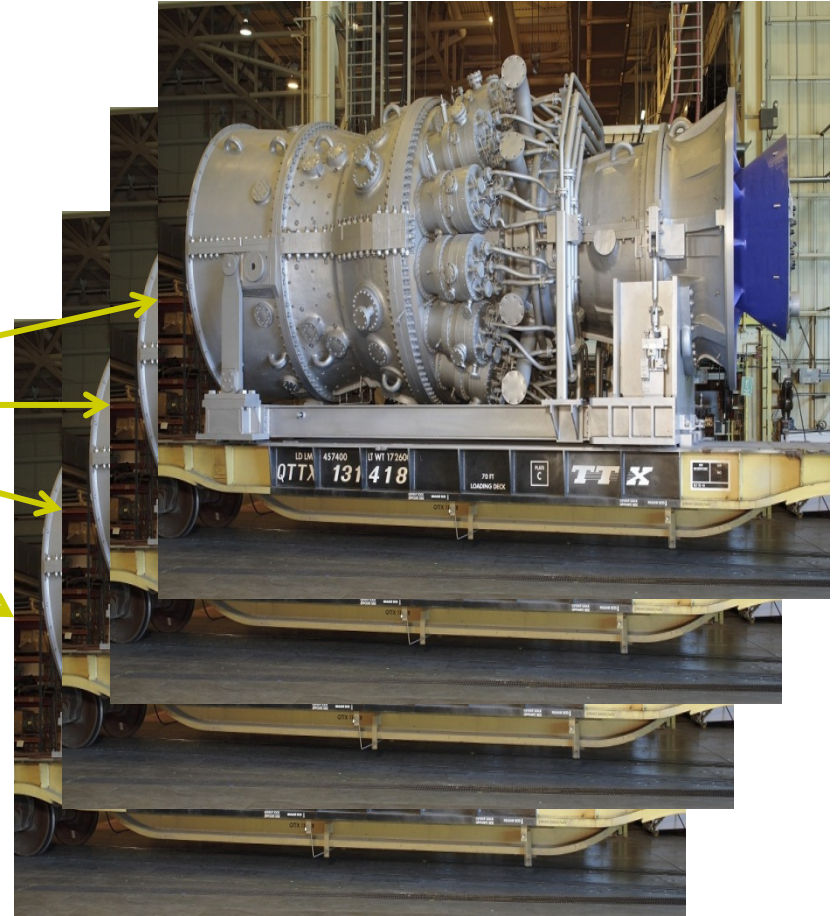
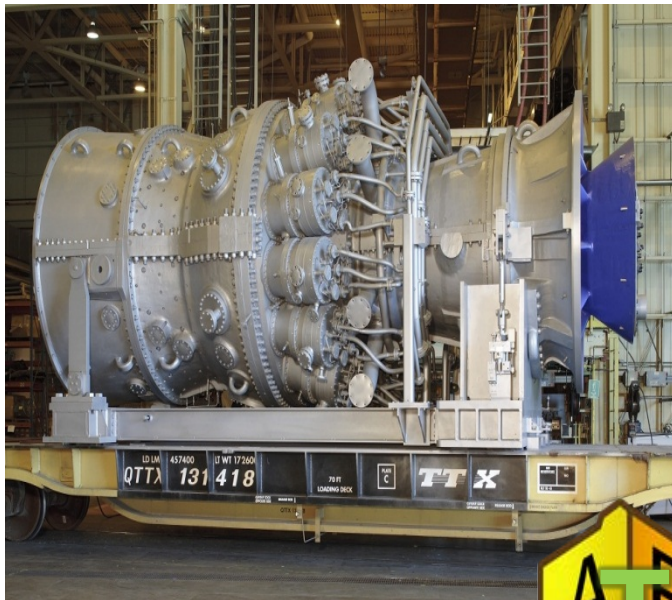
- Performance calculations
- KPI's



Why Add Structure?

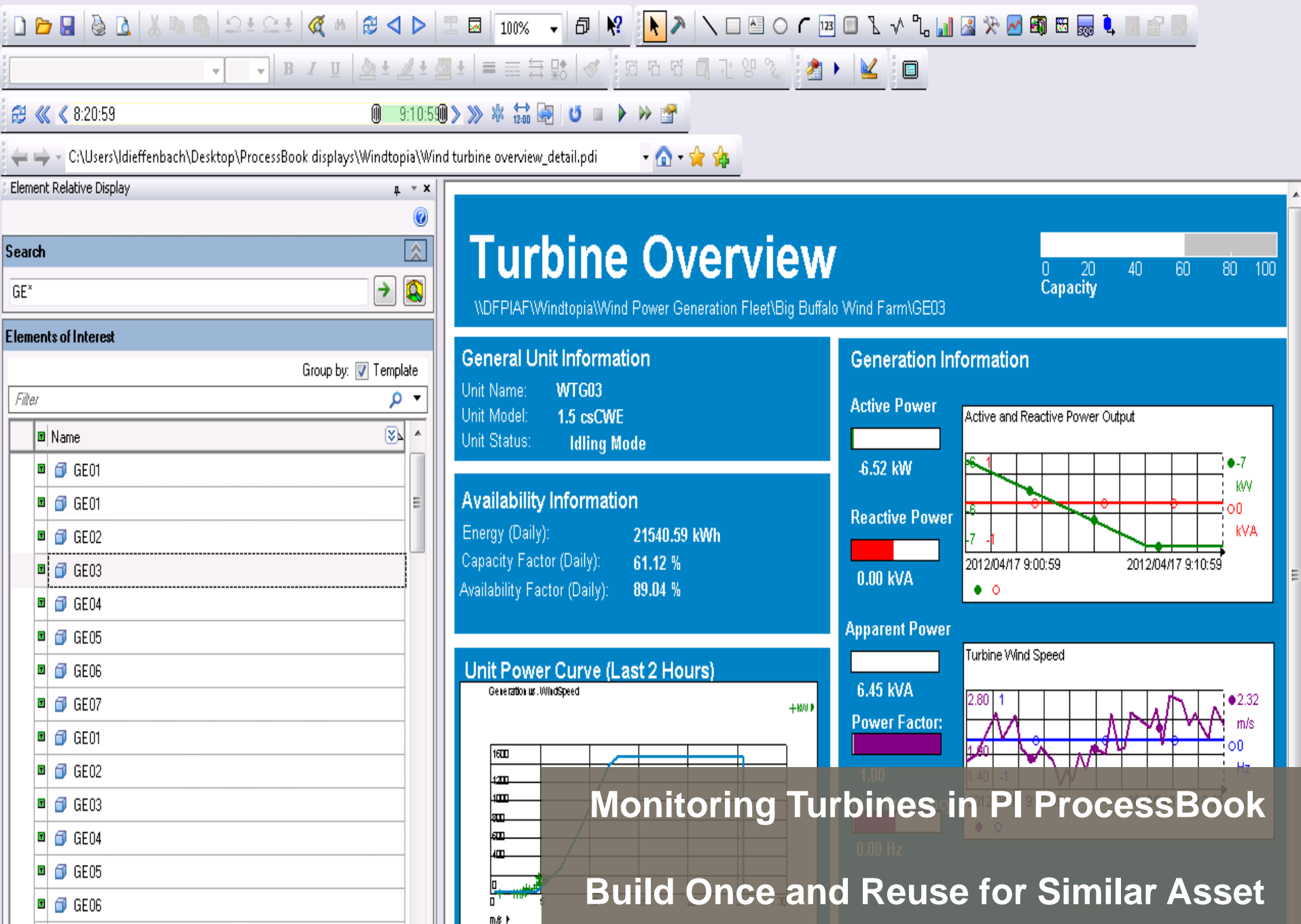
- Structure is **your** knowledge applied to **your** points
- Structure helps you:
 - Establish relationship between your assets and data
 - Capture domain expertise and share
 - Build applications
 - Answer new questions

A Common View for Similar Assets



PI Clients that Show Asset Data





Turbine Selection

Wind Power Generation Fleet

- Big Buffalo Wind Farm
- Black Mesa Wind Farm
 - GE01
 - GE02
 - GE03
 - GE04
 - GE05
 - GE06**
 - GE07
 - GE08
 - GE09
 - GE10
- Black Wolf Wind Farm
- Deep Valley Wind Farm
- Eldorado Wind Farm
- Grand Ridge Wind Farm
- White Bear Wind Farm
- Wild River Wind Farm
- Windy Valley Wind Farm
- Yellow Creek Wind Farm

Turbine Overview

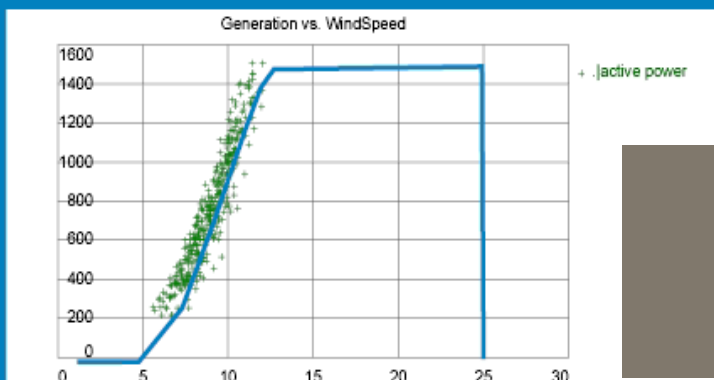
General Unit Information

Unit Name: WTG06
 Unit Model: 1.5 csCWE
 Unit Status: Load Operation

Availability Information

Energy (Daily): 17490 kWh
 Capacity Factor (Daily): 49.28 %
 Availability Factor (Daily): 100.00 %

Unit Power Curve (Last 2 Hours)



Generation Information

Active Power

1283.52 kW

Reactive Power

-33.84 kVA

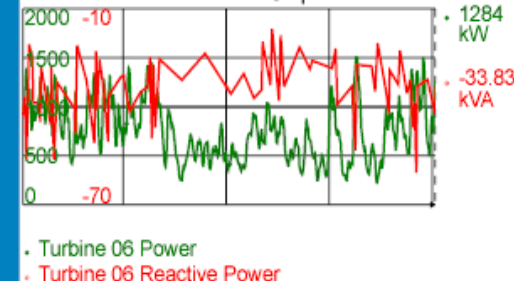
Apparent Power

1500.81 kVA

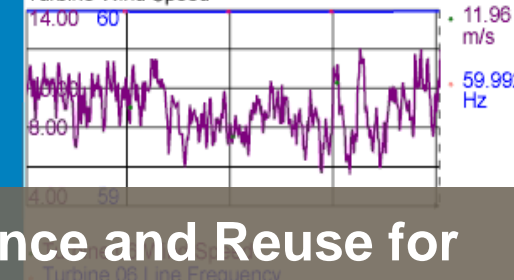
Power Factor:

0.98

Active and Reactive Power Output



Turbine Wind Speed



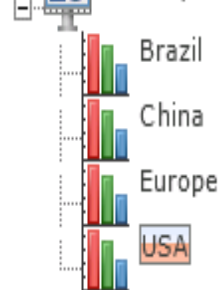
Build Once and Reuse for
 Similar Asset
 This time in PI WebParts



Report Type

Region

Country View



PI TimeRange

Start Time *-2h



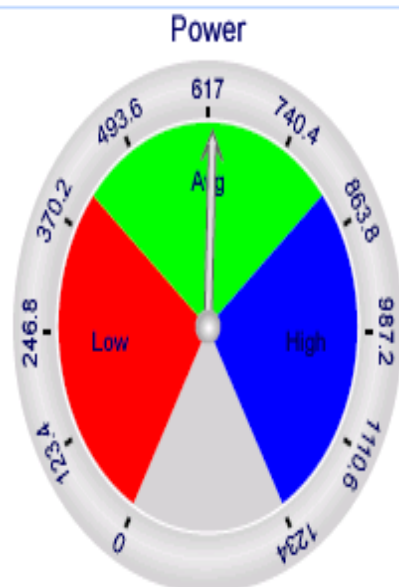
End Time *



Apply



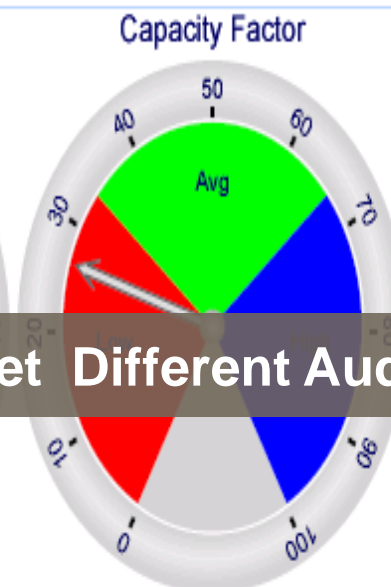
Real Time KPIs



= 624.75 MW; 3/6/2012 12:41:30 PM



= 94.630 %; 3/6/2012 12:43:40 PM



= 26.064 %; 3/6/2012 12:36:40 PM

Target Different Audiences



PLEASE
PAUSE
FOR
DEMO

Summary

- Combine disparate data in analyzes and reports
- Build your solution once and reuse on all similar assets
- Standardization across your entire enterprise
- Benefit all users forever
- Work with your assets and not points/tags
- Quickly and efficiently find the data you need

Gina Laviste

glaviste@osisoft.com

Sales Support Engr
OSIsoft, Singapore