



Reimagining the Journey of **INTEGRATED OPERATIONS** via PI System

Presented by **Mohd Haris Shukri**

Business Challenge

- Many assets that are working in silo mode
- No transparency and visibility of real time data
- Wasted opportunity of to allow a maximized data usage for analysis, planning and optimization
- Lacking of data integration, where there is no real capability of information to be brought up to the next level of hierarchy, which is allowing other systems to consume and use the collected data

Background

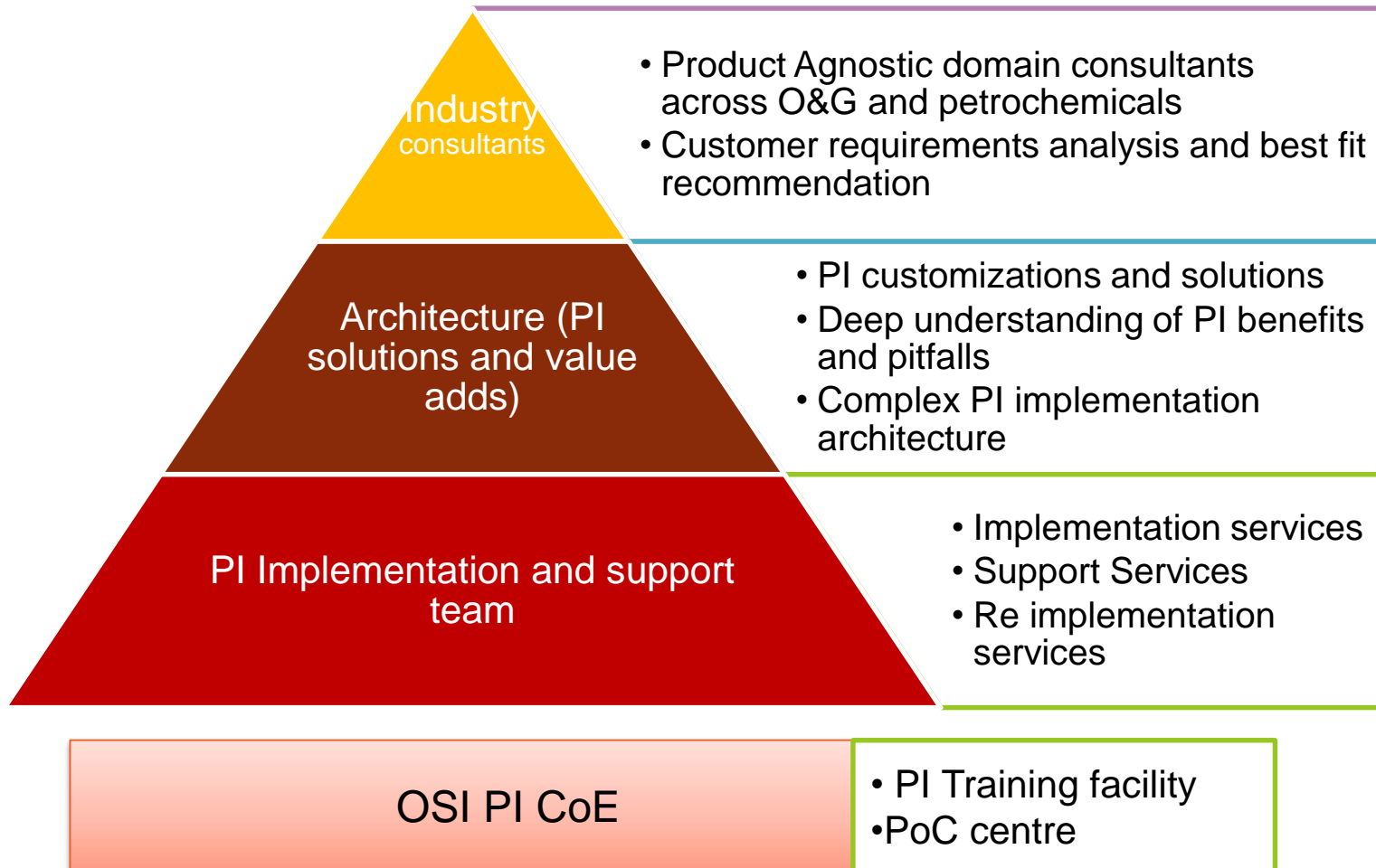
- Major oil and gas company that have installations and productions around the globe
- Many assets that are either having a silo or no real time data historian
- A lot of planning, decision making and analysis are using offline data, based on chains of reporting practice



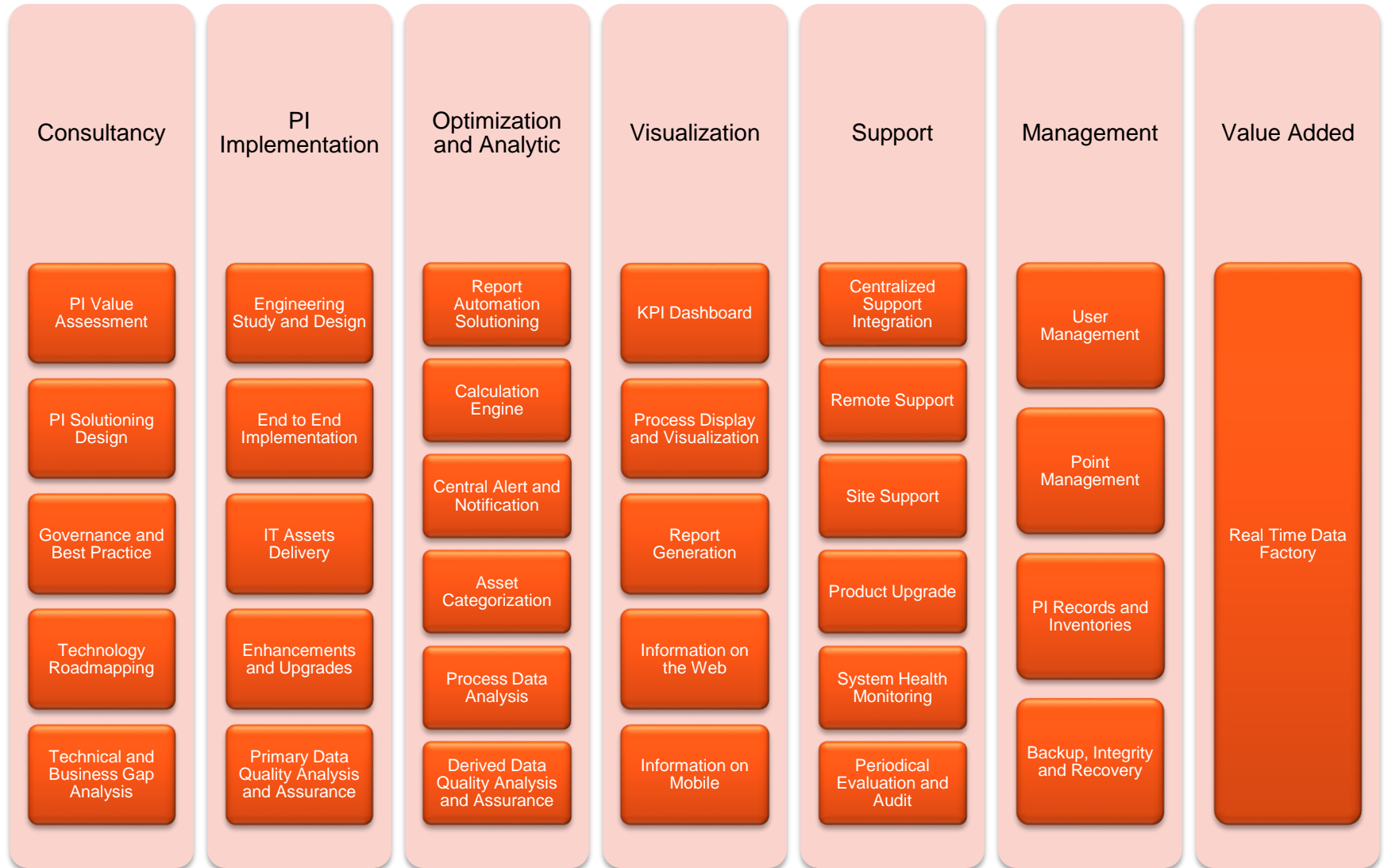
Objectives

- To have a centralized PI System, where all real time data are available at different layers and areas
- To break down the operation silos
- To support and provide information for integration operation, such as supporting knowledge management, provide data capability for collaborative work environment, cross discipline cooperation
- To allow full consummation of data by decision making, analysis, planning and optimization tools

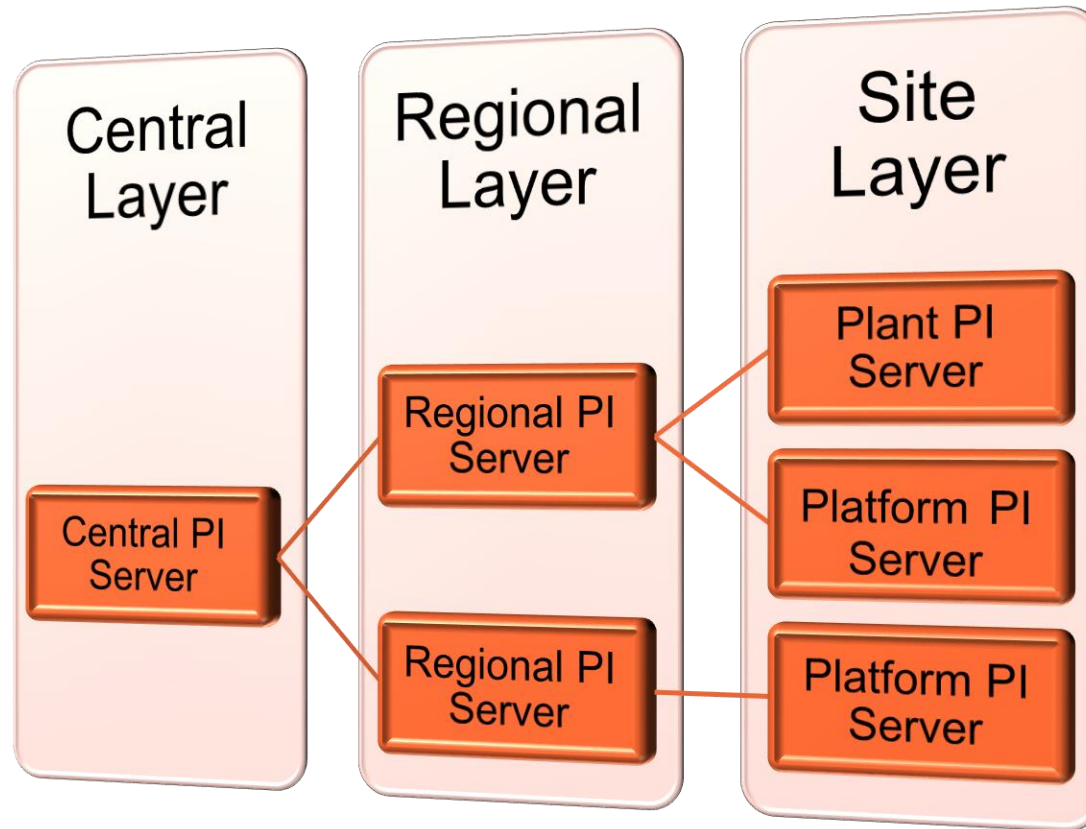
Overview

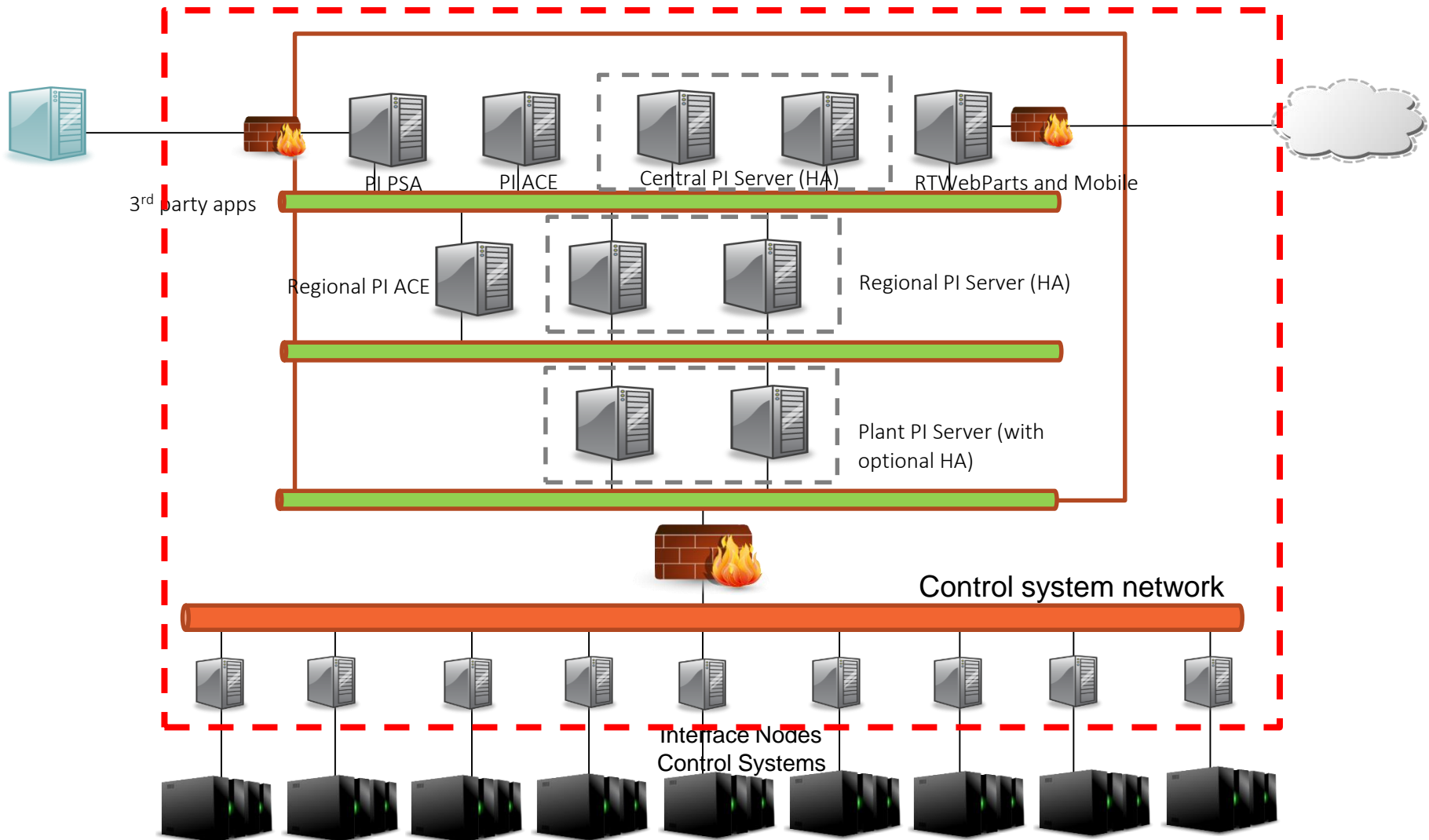


Framework

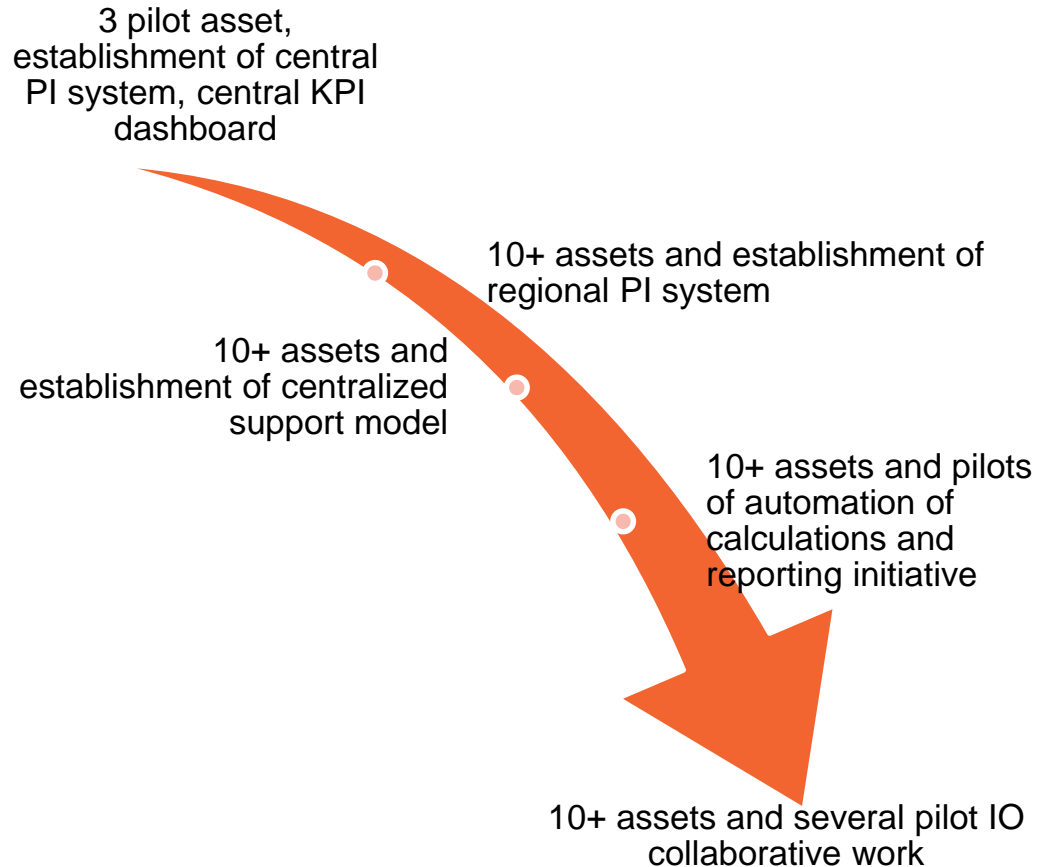


Architecture





Roadmap



Maturity Steps

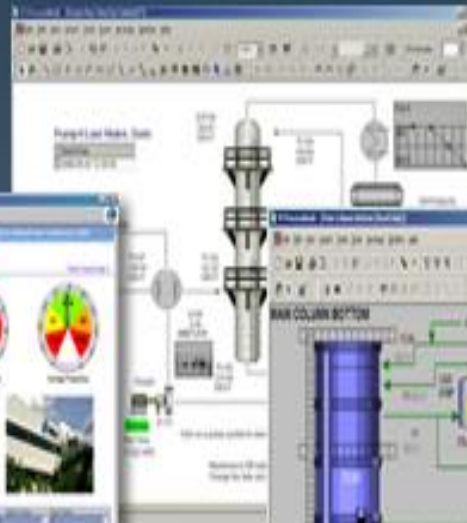


PI

PI AF



PI ADVANCED COMPUTING ENGINE (ACE)



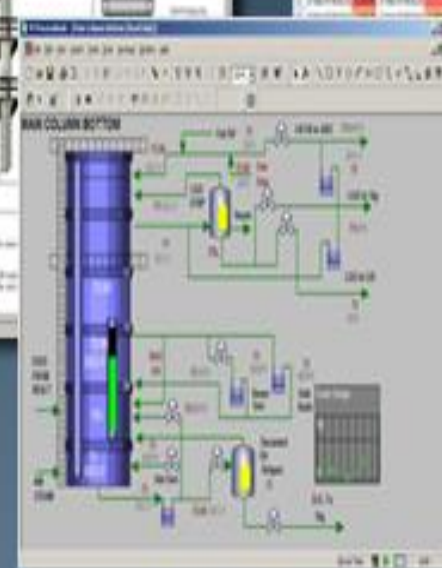
PI DATALINK



PI WEBPARTS



PI PROCESSBOOK



Usage Example

Process Data

Video Feed

Well Data



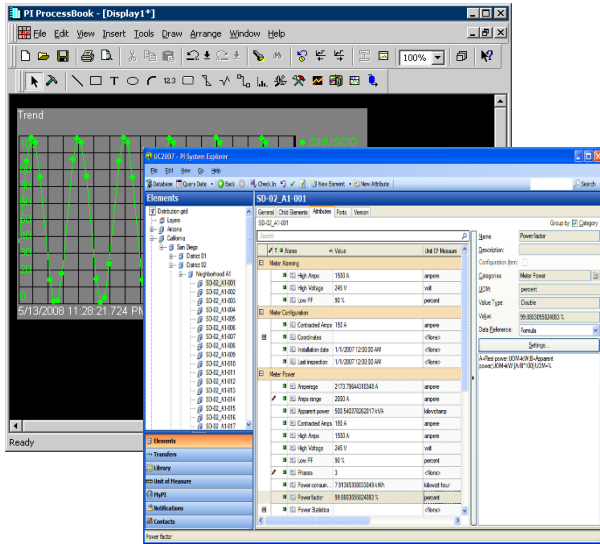
Drilling Data

Equipment
Information

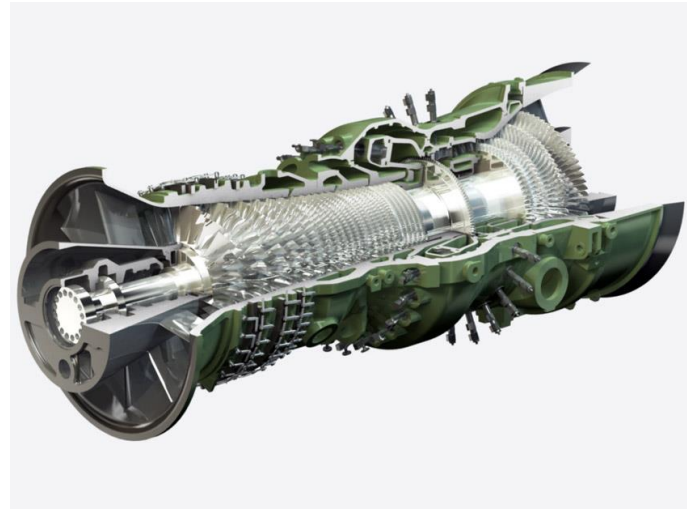
Engineering
Documents

Better Visibility and Decision Making!!

Usage Example



+



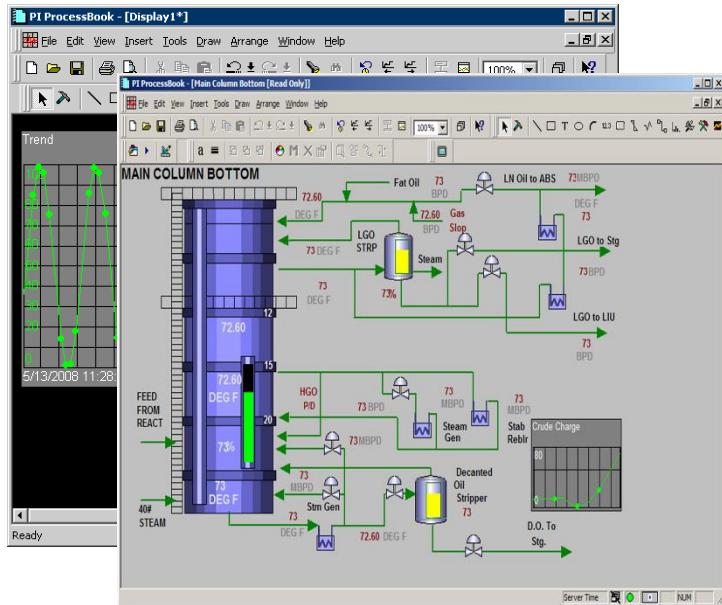
Real Time Data and
Asset Framework

Asset Management and
Maintenance

=

Predictive Asset Maintenance

Usage Example



+



Process Graphics and
Trends

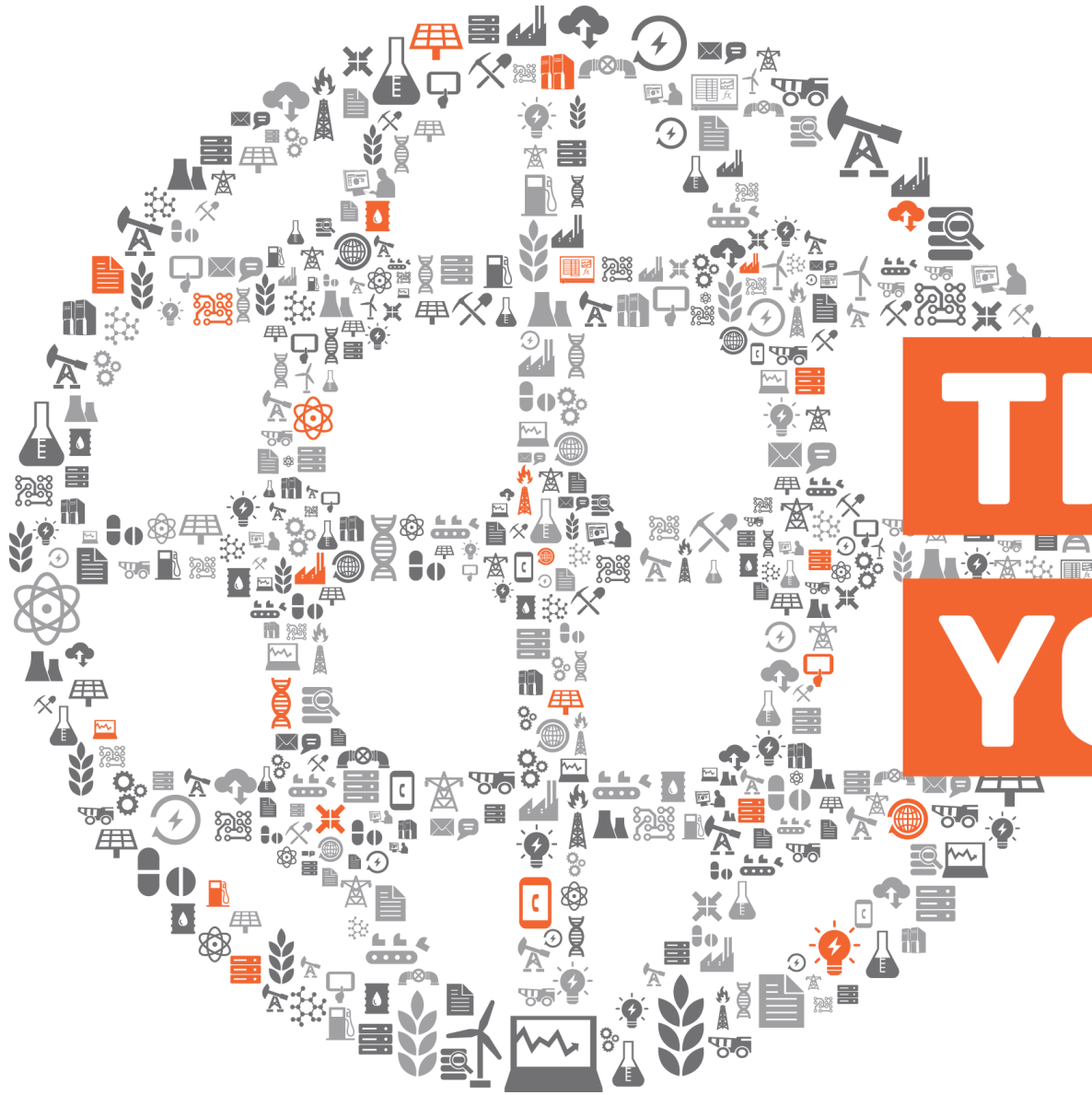
Onshore – offshore
collaboration meeting

=

Collaborative Work Environment

Mohd Haris Shukri bin Jahabar

Solution Architect



**THANK
YOU**