



OSIsoft®

# EMEA USERS CONFERENCE

BERLIN, GERMANY • SEPT 26-29, 2016



OSIsoft.

EMEA USERS CONFERENCE • BERLIN, GERMANY

© Copyright 2016 OSIsoft, LLC



# Welcome!

## OSIsoft Academic Symposium Berlin

26 September 2016

Presented by **John Matranga, OSIsoft**  
**Nicolas Peels, OSIsoft**



# Academic Symposium

- A few highlights..
- Break 15:15-15:30
- Conference Welcome Reception @ 17:00 (Wintergarten)
- Networking Dinner @ 19:00 (Neni, Budapester Str. 40)

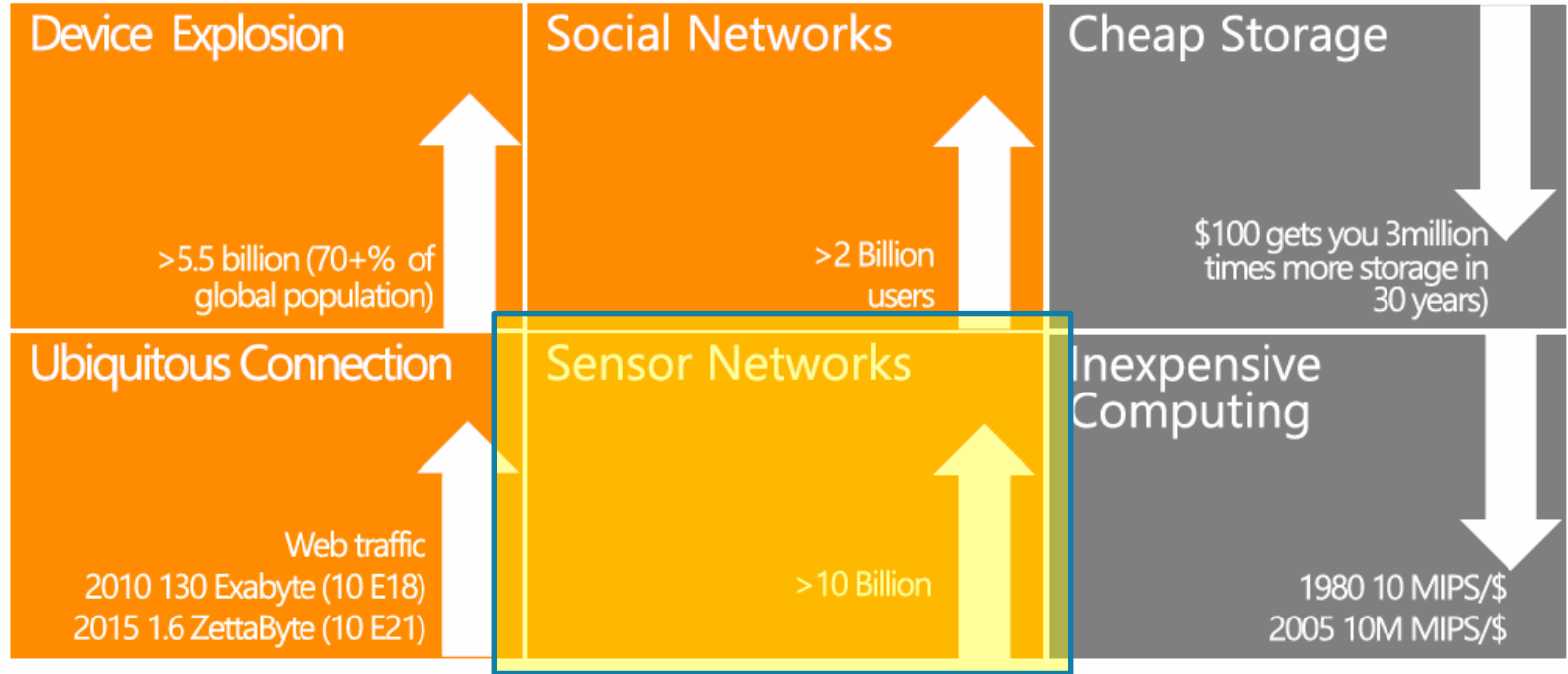
# Agenda

- Global trends
- Academic Programme Vision & Goals
- Case studies
- Call for collaboration



# Global Trends

# Key Data Trends



# Data Variety



## Actionable Insight



### Time Series



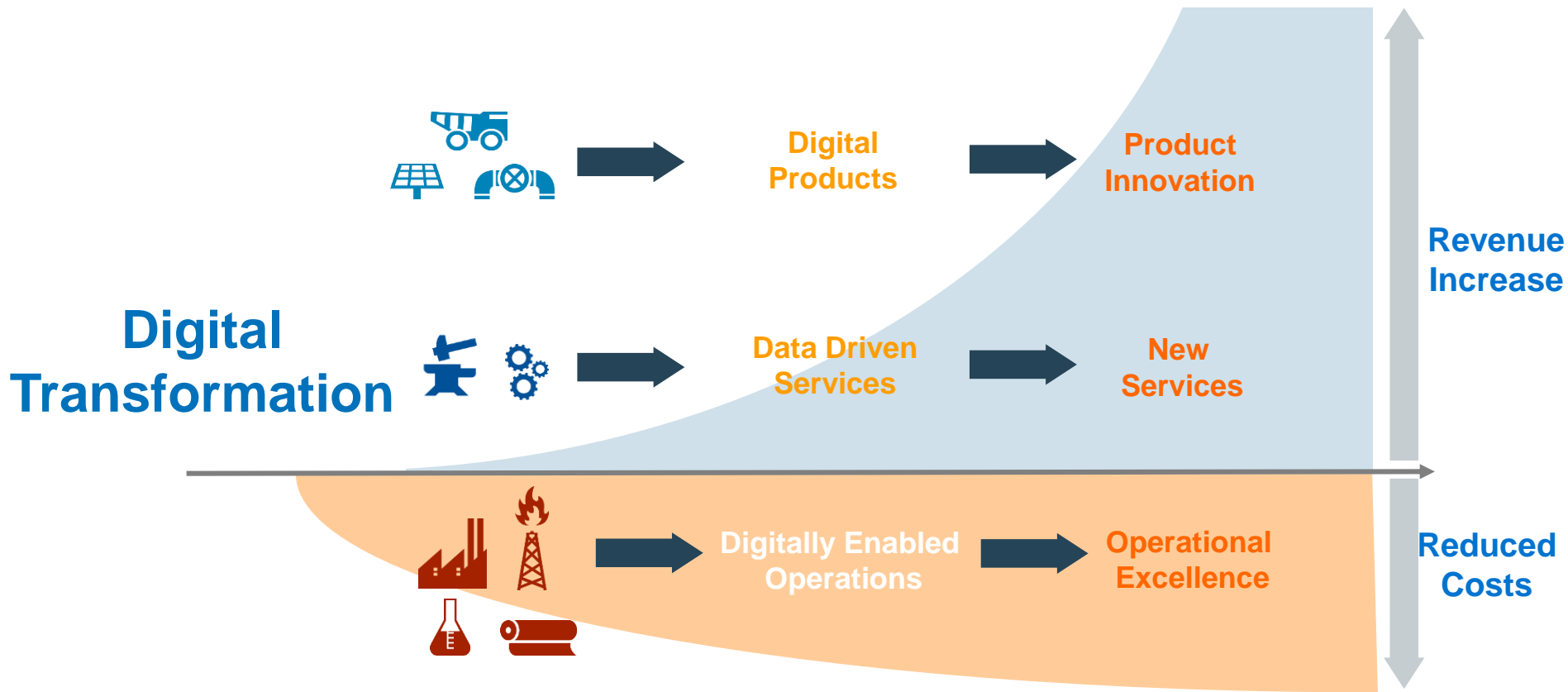
### Relational



### Unstructured

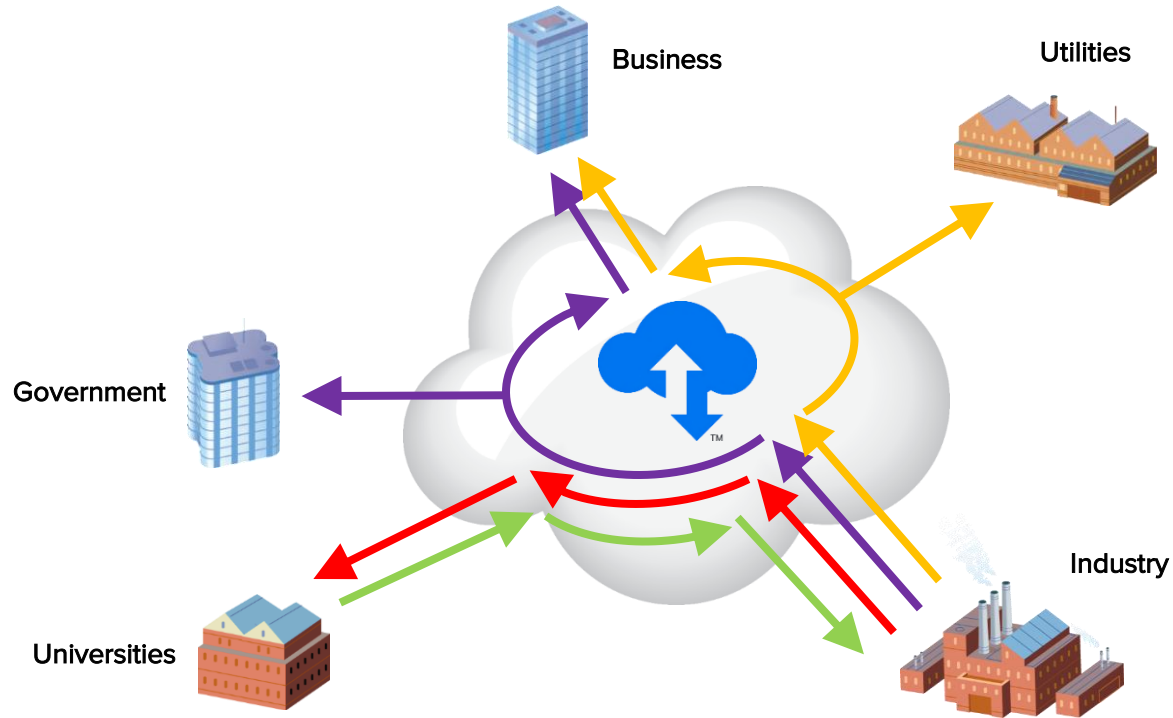


# Where Are Our Customers Going?

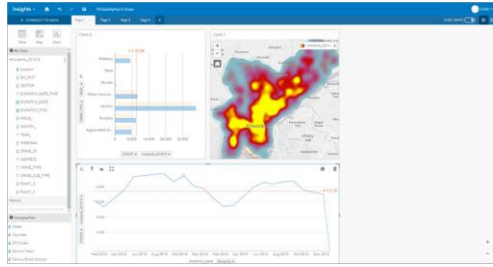




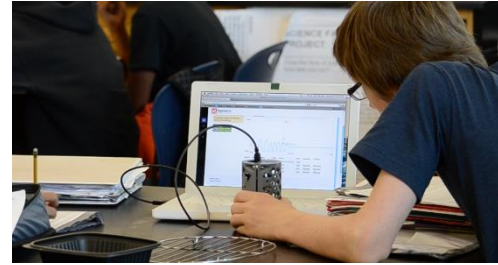
# Data communities



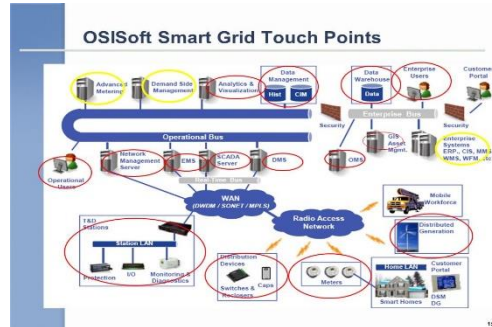
# Research & Educational Forces



Data Analytics



Sensor Data/IoT



Energy Research

## Manufacturing Changes

New Business Models : Shai Agassi company "Better Place"

- Distributed manufacturing of vehicle
- New infrastructure for operation, infrastructure owns battery
- Environment driving force in new business model



Manufacturing 2.0



# Academic Programme Vision

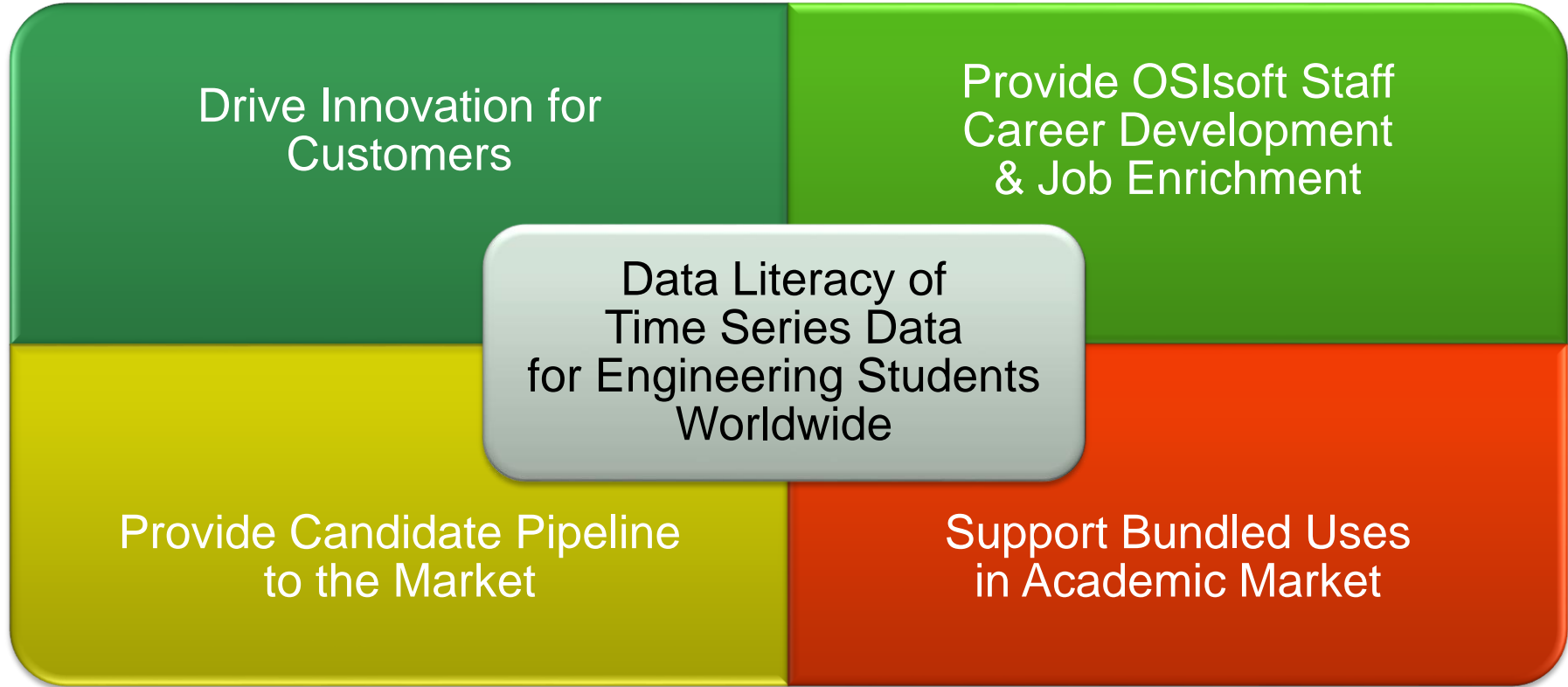




We believe People with Data  
can Transform their world



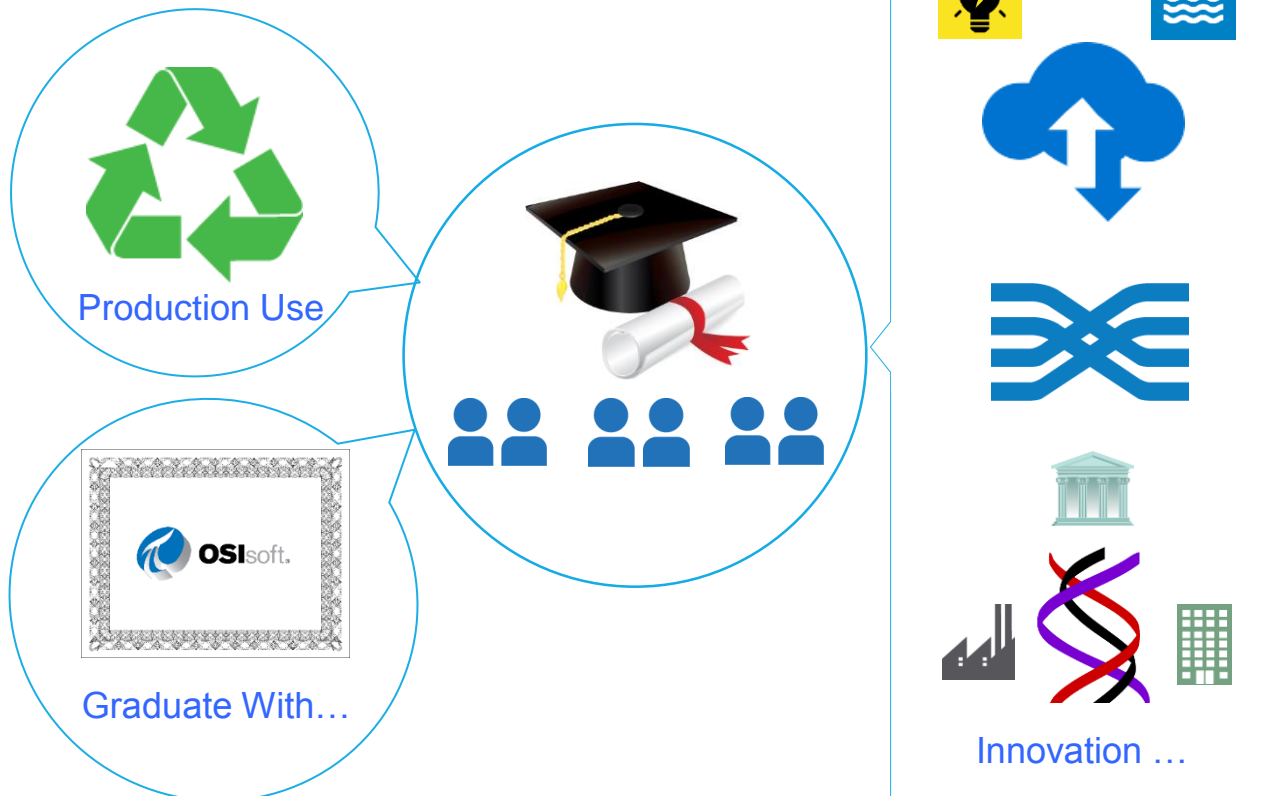
# Academic Programme Goals



# OSIsoft Hiring Philosophy

- Why do we hire engineers?
- Customer Support entry
- Hire for the company
- Engaging with students

# University Programme





# A few examples







# PI System in a Lab- Based Course: Bio Engineering at MIT

Presented by



OSIsoft.

EMEA USERS CONFERENCE • BERLIN, GERMANY

© Copyright 2016 OSIsoft, LLC

# Improving the Students Understanding of Bioreactors

Use previous PI data from early semesters to educate the students to use PI

Benefits:

- Project relevant teaching
- Increased student motivation
- Improved experimental design



# Classroom Interaction

- Analyze real-time results from experiments
- Students pool results
  - Explore effects of a wide range of independent variables



Student interaction during a mass transfer experiment

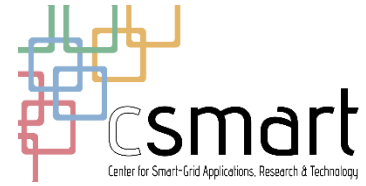
# IIT Smart Campus Community

**Professor Mohammad Shahidehpour, IEEE Fellow  
Galvin Center for Electricity Innovation  
Illinois Institute of Technology**

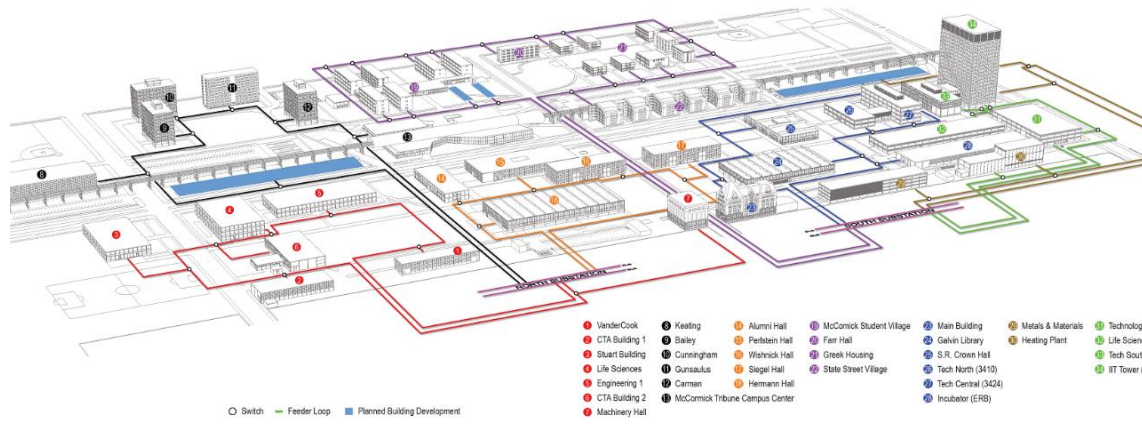




# The Robert W. Galvin Center for Electricity Innovation



Dr. Shahidehpour presenting  
CSMART's OSIsoft campus dashboard



IIT Microgrid 2.5 Miles south of Downtown Chicago  
Includes 2 substations, 7 Loops



# The Center for Smart Grid Applications, Research, and Technology (CSMART)



Networked LED Streetlight Installation on IIT's Campus replacing old High Pressure Sodium Fixtures



CSMART Lab space



OSIsoft.

EMEA USERS CONFERENCE • BERLIN, GERMANY

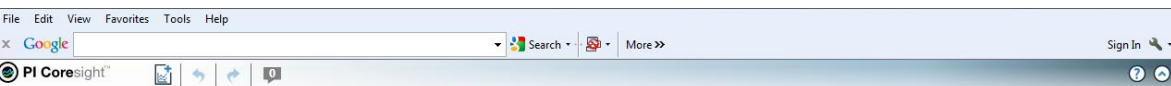
© Copyright 2016 OSIsoft, LLC

# IBEW-NECA Technical Institute: Your Pathway to a Renewable Future

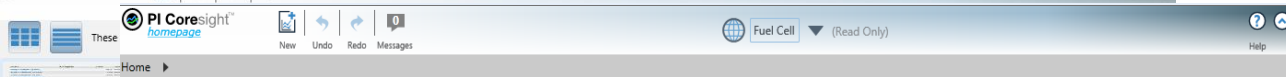




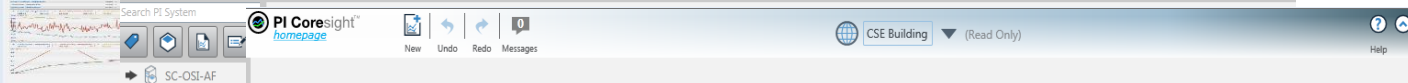
# Visuals (Microgrid Dashboard)



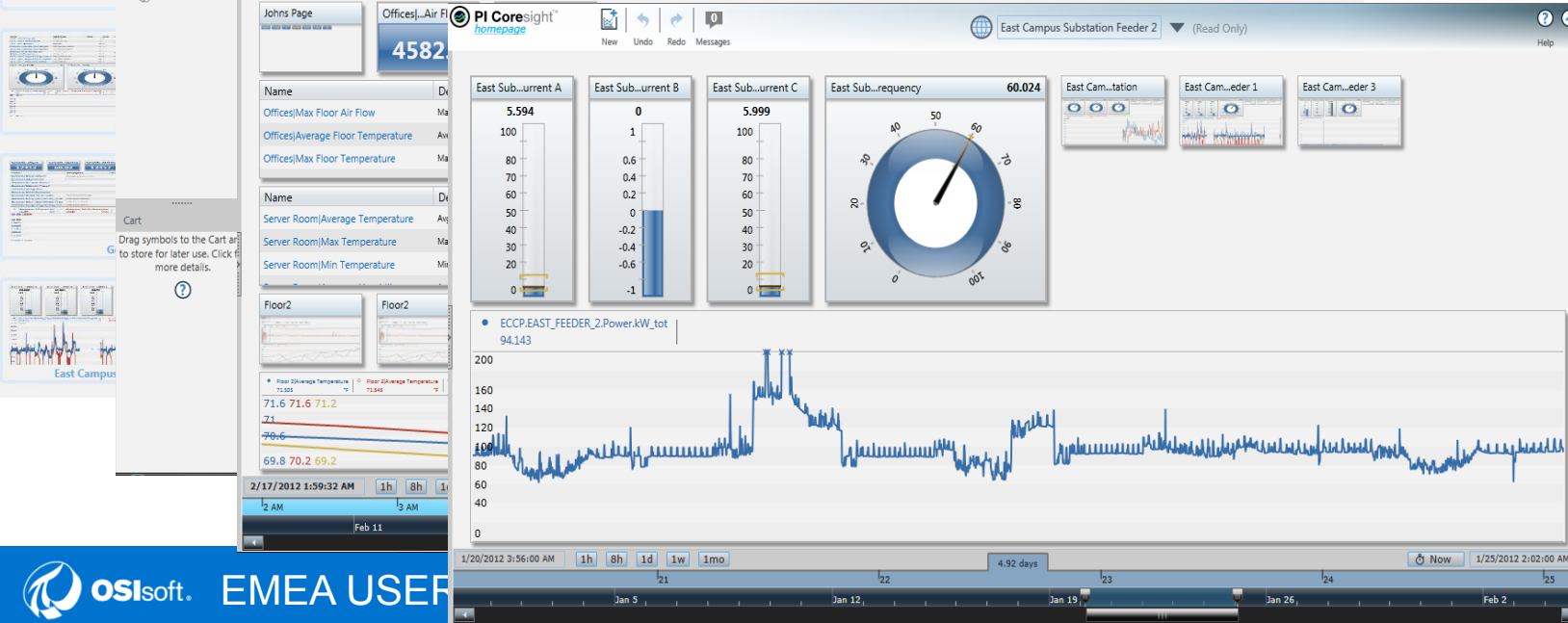
MicroGrid Dashboard



Fuel Cell Monitoring



Building Overview



Substation  
Feeder  
Overview

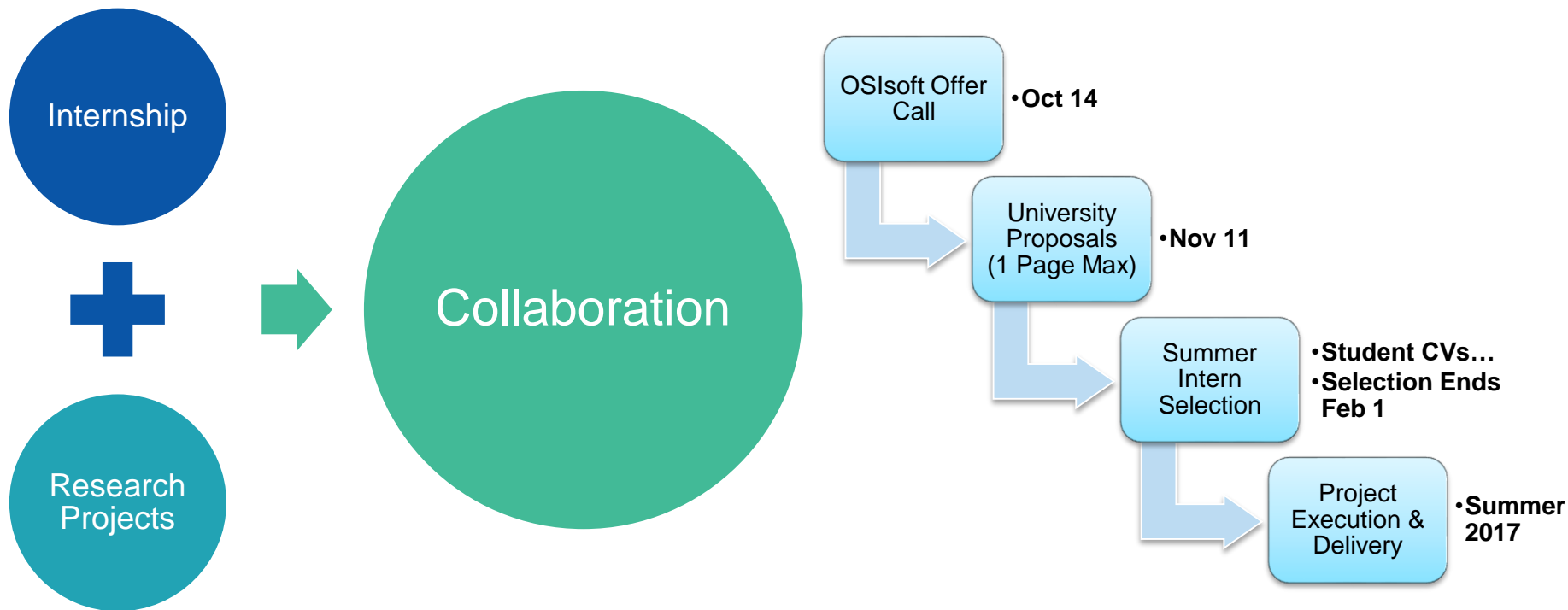




# Call for Collaboration



# OSIsoft Call For Collaboration Summer Internship



## Contact Information

### John Matranga

[john@osisoft.com](mailto:john@osisoft.com)

Director Customer Innovation and Academia  
OSIsoft - San Leandro, CA



### Nicolas Peels

[npeels@osisoft.com](mailto:npeels@osisoft.com)

Academic Programme Mgr, EMEA  
OSIsoft – London, UK



감사합니다

谢谢

Danke

Merci

Gracias

Thank You

ありがとう

Спасибо

Obrigado



OSIsoft.

EMEA USERS CONFERENCE • BERLIN, GERMANY

© Copyright 2016 OSIsoft, LLC



OSIsoft®

# EMEA USERS CONFERENCE

BERLIN, GERMANY • SEPT 26-29, 2016



OSIsoft.

EMEA USERS CONFERENCE • BERLIN, GERMANY

© Copyright 2016 OSIsoft, LLC