



OSIsoft®

# EMEA USERS CONFERENCE

BERLIN, GERMANY • SEPT 26-29, 2016



OSIsoft.

EMEA USERS CONFERENCE • BERLIN, GERMANY

© Copyright 2016 OSIsoft, LLC



# Greater Flexibility For Smarter Energy

Presented by **Arie van Boven**  
**Arco Stolk**



OSIsoft.

EMEA USERS CONFERENCE • BERLIN, GERMANY

© Copyright 2016 OSIsoft, LLC

# RWE Supply & Trading: The Commercial Center of RWE



- > Our headquarters in Essen, Germany, Europe's largest energy trading floor
- > A center of excellence in energy trading, with approximately 1,300 employees coming from over 37 countries



# Who Are We Working For?

Our main customer: **Load Dispatch**

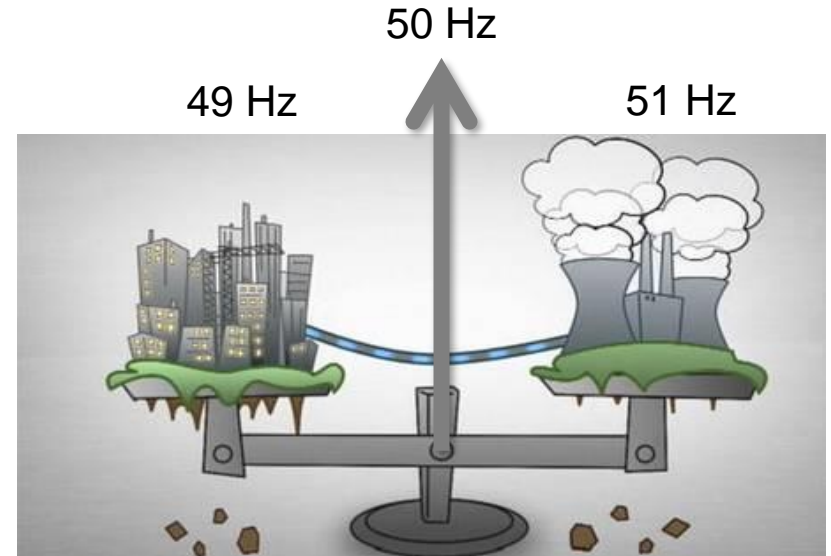
Short-term optimization and control of the use of RWE power plants, considering the technical and economical conditions

**Gas Dispatch**

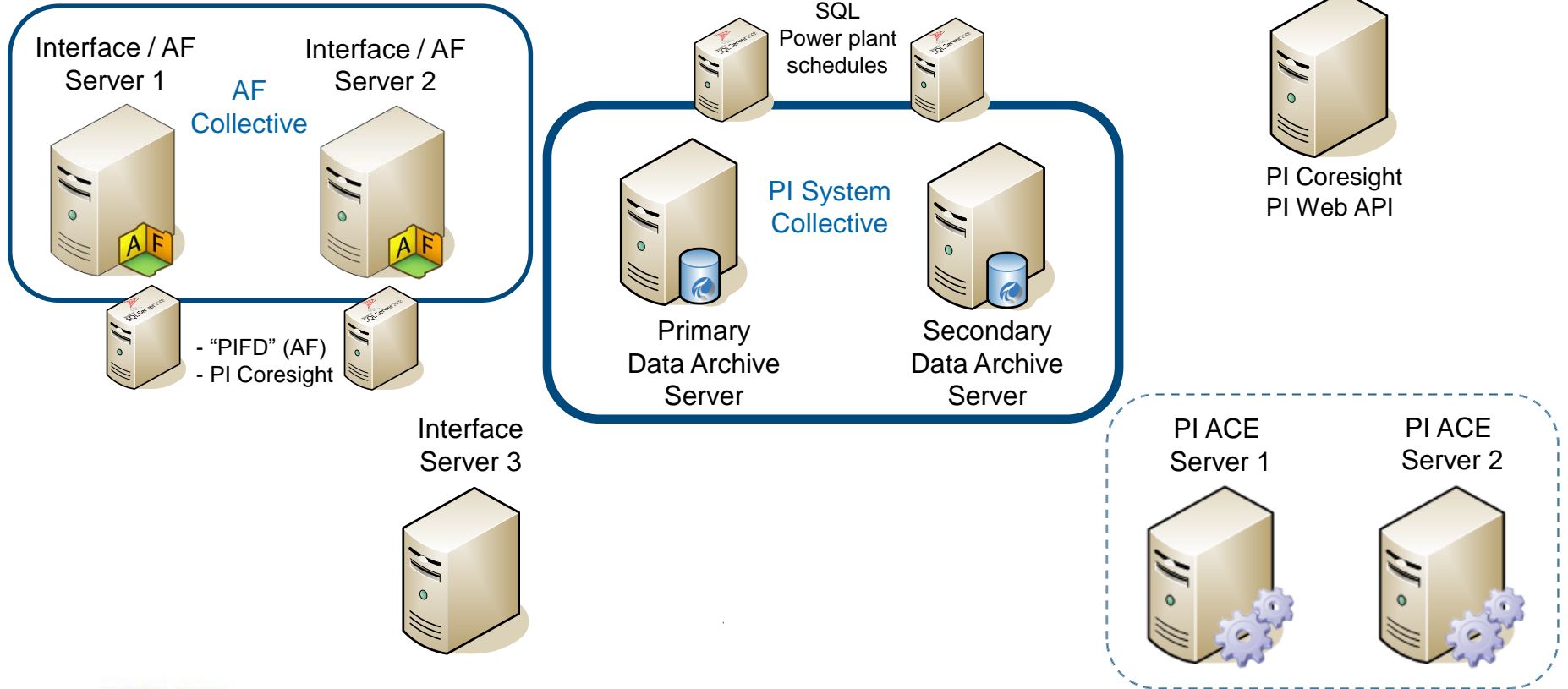
**Reporting/Billing systems**

**SCADA**

Actually.... Everybody uses data from the PI System



# RWEST PI System Landscape - Production

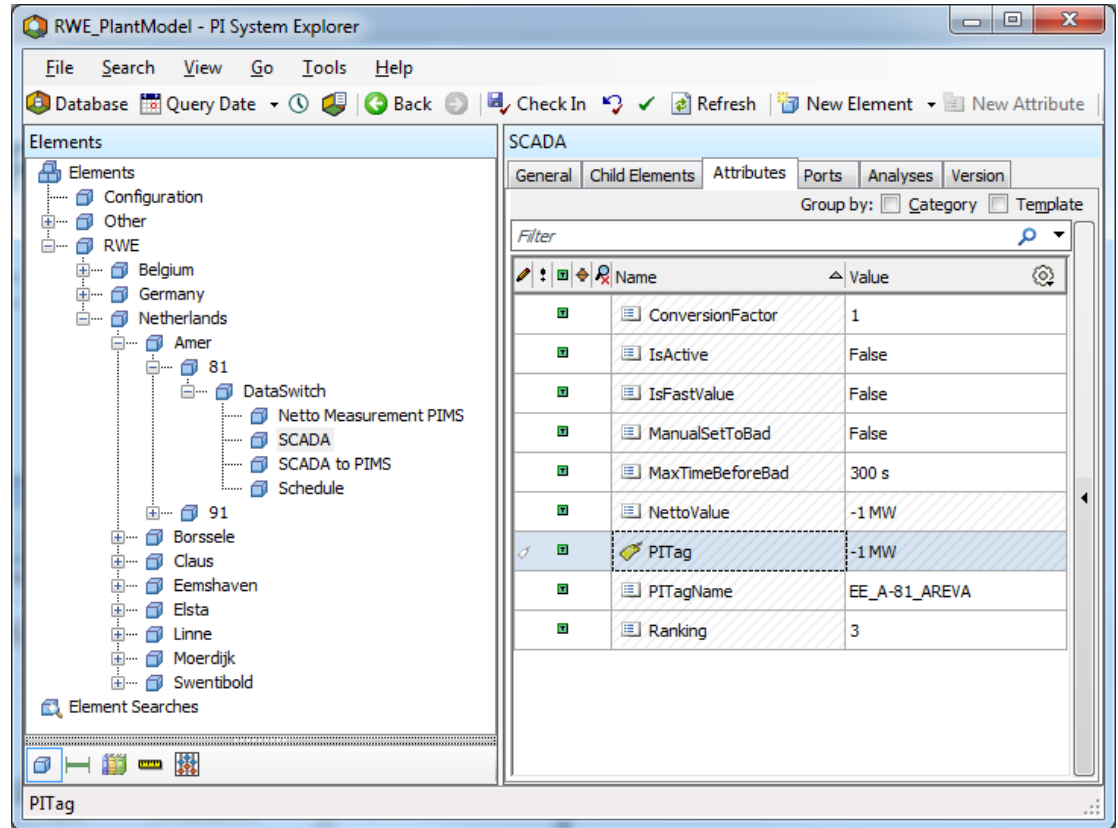


# The RWE AF Plant Model

Summer 2015 : in-house workshop

Gained know-how to create RWE Plant Model

Create new applications using the RWE Plant Model (replaces old applications)



# New Application : Dataswitch (1)

The screenshot shows the 'RWE\_PlantModel - PI System Explorer' application. The left pane displays a hierarchical tree of elements. The 'Schedule' element is selected under the path: Elements > RWE > Germany > Bergkamen > A > DataSwitch. A red arrow points from the text 'Accepted Online Value of unit calculated based on ranking and expiration time' to the 'Schedule' element in the tree.

The right pane shows the 'Schedule' element's properties. The 'General' tab is active, displaying a table of attributes.

Name	Value	Time Stamp
ConversionFactor	1	01/01/1970 00:00:00
IsActive	False	01/01/1970 00:00:00
IsFastValue	False	01/01/1970 00:00:00
ManualSetToBad	False	01/01/1970 00:00:00
MaxTimeBeforeBad	900 s	01/01/1970 00:00:00
NettoValue	720 MW	16/09/2016 13:30:00
PITag	720 MW	16/09/2016 13:30:00
PITagName	BKA_A_FP	01/01/1970 00:00:00
Ranking	4	01/01/1970 00:00:00

At the bottom of the window, the status bar indicates: 'Schedule Modified: 28/06/2016 14:56:35. Version: 01/01/1970 00:00:00, Revision 1'.

# New Application : Dataswitch (2)

KEPInfo

Germany Netherlands / Belgium

Go Now

19.09.2016 16:26:44

Gas (AOW)

Water (AOW)

Block	FP	AOW	Delta	Block	FP	AOW	Delta	
Niederaussem	C	280	280	0	Bergkamen	A	720	717
D	298	301	4	Gersteinwerk	K2	620	608	
E	288	293	5	Ibbenbueren	B	792	790	
F	0	0	0	Voerde	A	645	645	
G	623	626	3	Voerde	B	705	703	
H	639	646	7	Westfalen	E	780	779	
K	934	924	-10	Mannheim		661	677	
Sum	3,061	3,070	9	Steinkohle	Sum	4,923	4,923	
Frimmersdorf	P	289	288	-1	Emmland	B	481	477
Q	253	253	0	Emmland	C	350	346	
Sum	542	542	0	Emmland	D	894	892	
Neurath	A	151	157	6	Gersteinwerk	F	0	0
B	296	284	-12	Gersteinwerk	G	0	0	
C	0	0	0	Gersteinwerk	I	0	0	
D	599	597	-1	Gersteinwerk	K1	0	0	
E	603	602	-1	Gas	Sum	1,665	1,654	
F	1,022	1,040	18					
G	1,053	1,070	18	Kaunertal		0	0	
Sum	3,723	3,751	28	Schluchsee		0	0	
Weisweiler	E	251	296	45	Saekingen		54	-1
F	321	316	-5	Wehr		0	47	
G	659	660	0	Koepchenwerk		0	0	
H	654	655	1	Vianen		10	-65	
Sum	1,886	1,927	41	Wasser	Sum	64	-19	
GoWerk		40	41					
Fabrik Berrenrath		20	20					
Fabrik Fortuna		0	-4					
Fabrik Frechen		20	19					
Fabriken	Sum	80	77					
Braunkohle	Sum	9,292	9,366					
Gundremmingen	B	969	970					
C	959	959	0					
Lingen	A	1,153	1,167					
Kernenergie	Sum	3,078	3,095					
Weisweiler	G_VGT	0	0					
Weisweiler	H_VGT	0	0					
Weisweiler	MVA	24	23					
Karnap	MVA	29	30					
Bochum		0	-1					
Dortmund		12	12					
Laufwasser		6	9					

Related units

Unit	AOW
Amer 81	1
Amer 91	616
Bergkamen A	717
Biblis A_EB	-5
Biblis B_EB	-5
Bochum - Dortmund_	11
Bochum	-1
Borssele 12	0
Borssele 30	140
Claus C	-2
Dormagen Currenta	
Dormagen DT	168
Dormagen GT_1	170
Dormagen GT_2	173
Dormagen GuD	531
Dormagen K10	20
Dortmund	12
Eemshaven A	-15
Eemshaven B	770
Elsta 2	140
Emmland B	475
Emmland C	346
Emmland D	835
Emmland DT_B	379
Emmland DT_C	242

Bergkamen A 19.09.2016 16:27:23

AOW	717.12	KA_A.AOW_CUR	19.09.2016 16:27:19
<input checked="" type="radio"/> Automatic			
<input checked="" type="radio"/> Counter Value	717.12	KA_A.ZOW	19.09.2016 16:25:00
<input type="radio"/> SCADA	718.00	KA_A.PistTE	19.09.2016 16:27:18
<input type="radio"/> Amprion Value	725.00	KA_A.IW	19.09.2016 16:26:00
<input type="radio"/> Schedule	720.00	KA_A.FP	19.09.2016 16:15:00
<input type="radio"/> Generator Value	-799.68	GWB Pist	28.09.2015 11:30:50
<input type="radio"/> Manual input	717.12		



## New Application : Dataswitch (3)

Uses RWE Plant Model

Uses AF SDK

Very flexible

GUI build with Windows Presentation Foundation (Microsoft)

Redundant

# Future Tags at RWEST

Schedules for power plants

Weather/wind forecast

Pricing prognosis etc.

Missing: calculation with future values

Free tip for OSIsoft:  
add this functionality to analysis 😊

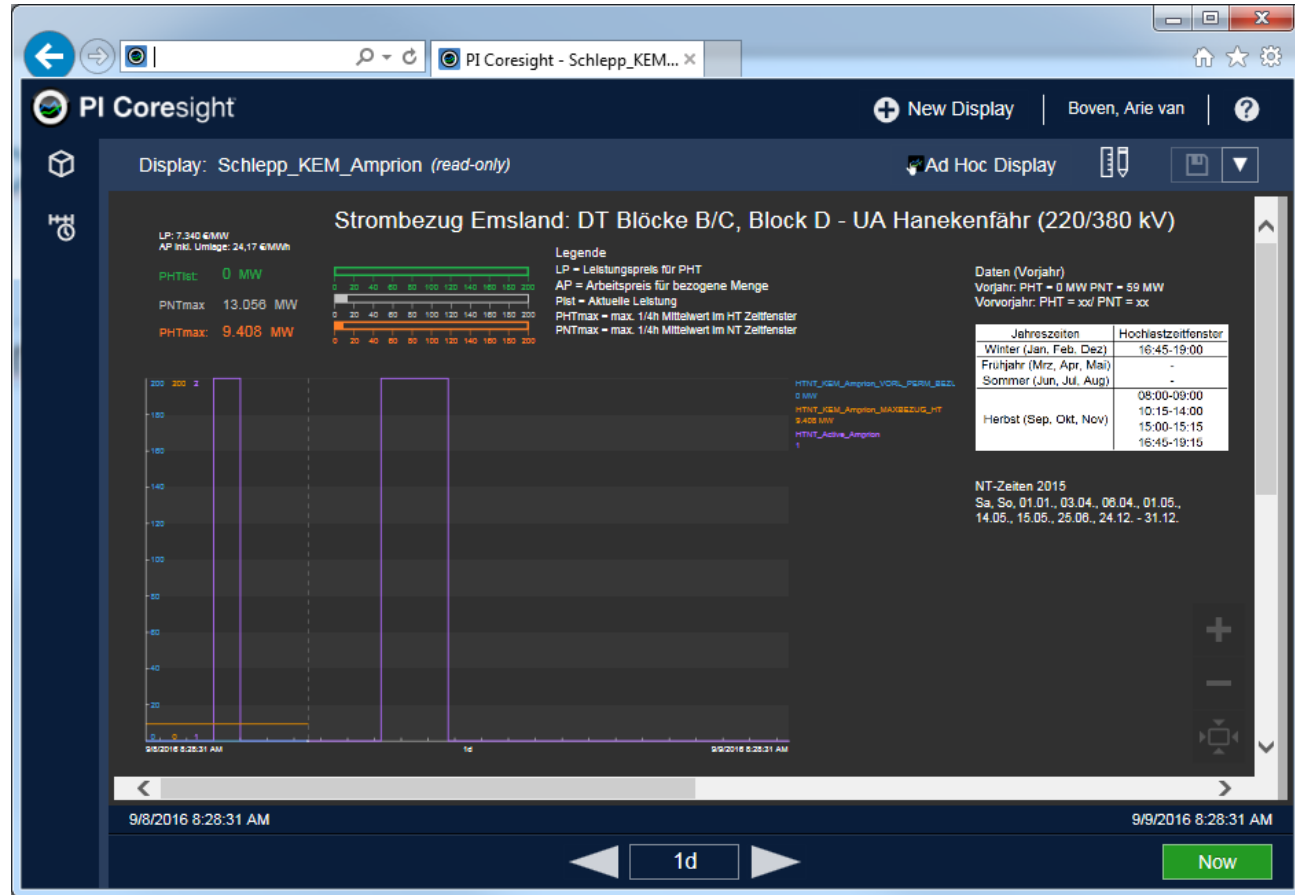
## Custom build Future Calculator (PE Like)

Y	AA	AB	AC	AD	AE	AG
future	location1	location2	location3	location4	location5	pointsource
1	0	0	0	5	24	RWE_FUTURE_PE
1	0	0	0	5	24	RWE_FUTURE_PE
1	0	0	0	5	24	RWE_FUTURE_PE
1	0	0	0	5	24	RWE_FUTURE_PE

# PI Coresight 3 (1)

PI Coresight instead  
of PI ProcessBook

Uses future tags



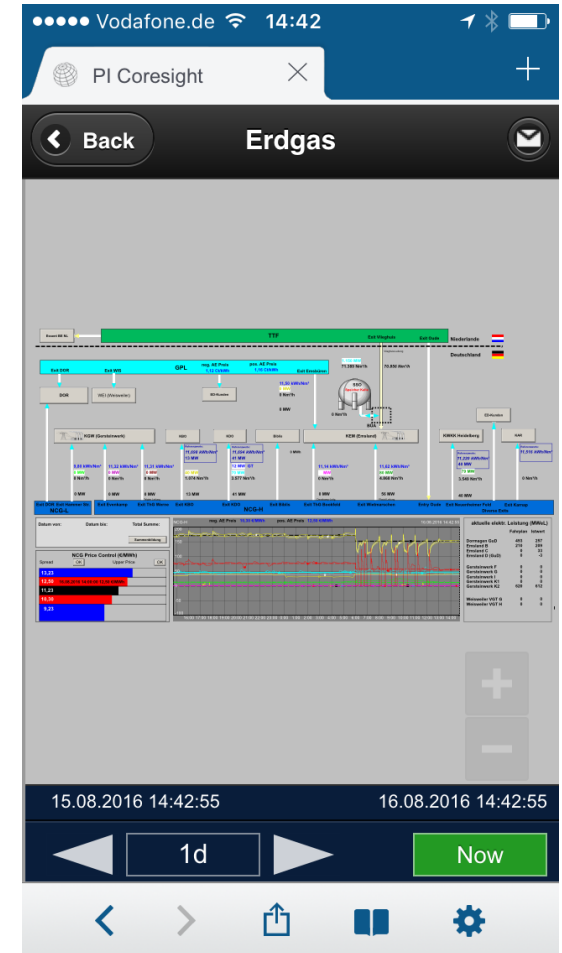
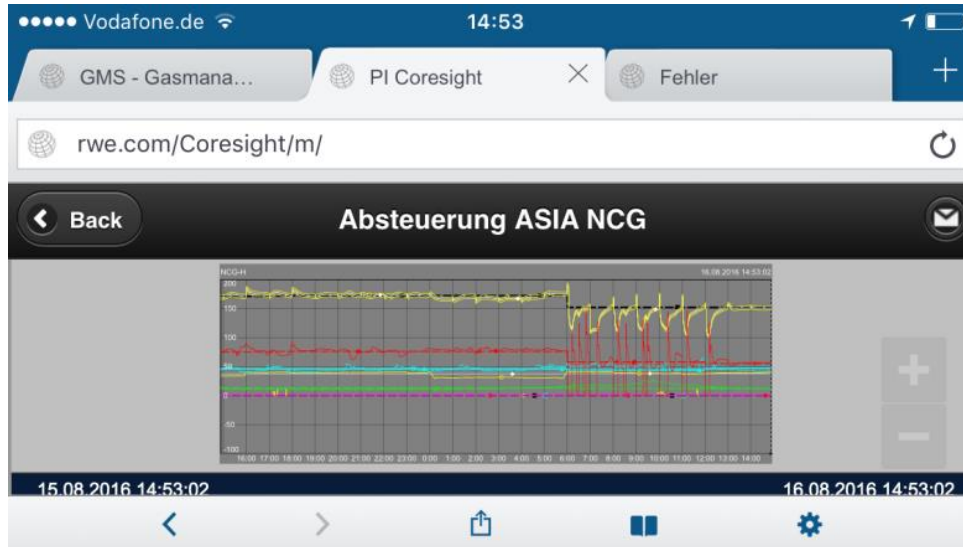
# PI Coresight 3 (2)

## PI Coresight on iPhone

Mobile Iron: <https://www.mobileiron.com/>

Enables intranet urls on mobile phones

Enables business to react 24/7 !



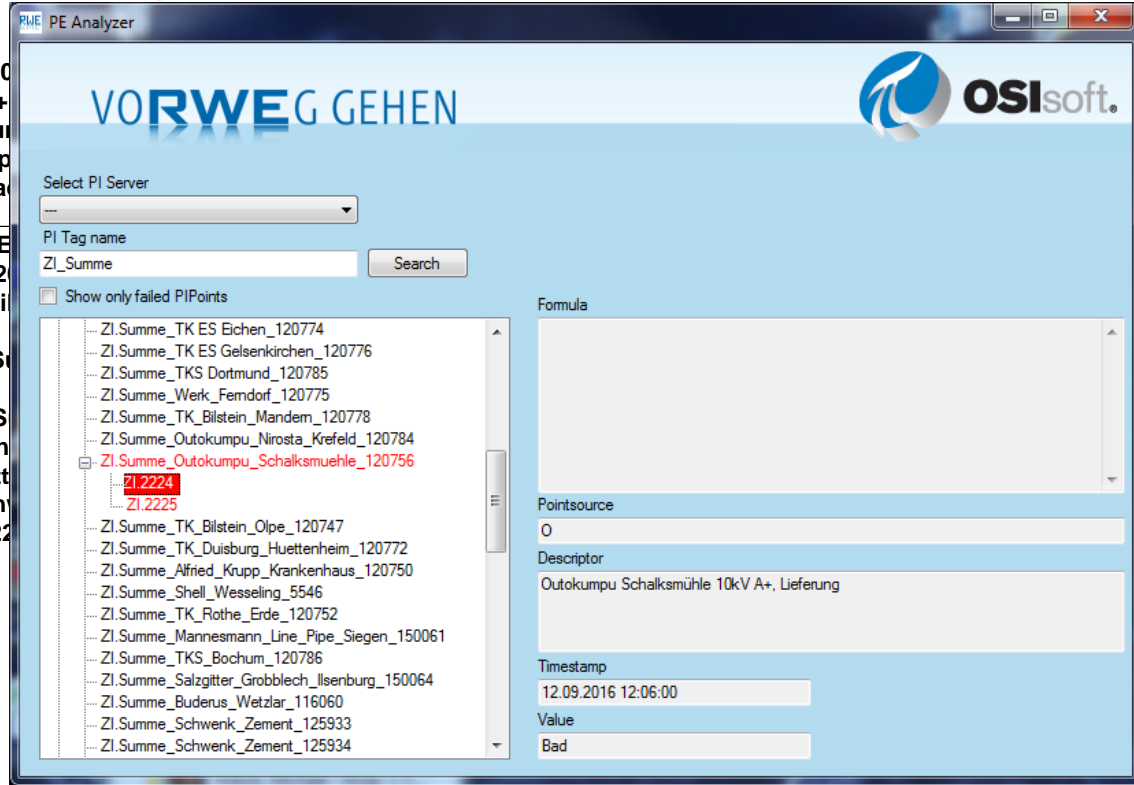
# New Application : PE Analyzer

Problem: Performance Equation gives “Calc Failed”....

event=ZI.Summe\_Outokumpu\_Nirosta\_Duesseldorf\_120792' + 'ZI.Summe\_Outokumpu\_Nirosta\_Duesseldorf\_120792' + 'ZI.Summe\_TKS\_Emscheraufbereitung\_139223' + 'ZI.Summe\_TKS\_Linde\_133963' + 'ZI.Summe\_Outokumpu\_Rasselstein\_120773' + 'ZI.Summe\_TK\_Gerlar' + 'ZI.Summe\_TK\_Gerlar' + 'ZI.Summe\_TKS\_Dortmund\_120785' + 'ZI.Summe\_Werk\_Femdorf\_120775' + 'ZI.Summe\_TK\_Bilstein\_Mandem\_120778' + 'ZI.Summe\_Outokumpu\_Nirosta\_Krefeld\_120784' + 'ZI.Summe\_Outokumpu\_Schalksmuehle\_120756' + 'ZI.Summe\_TK\_Duisburg\_Huettenheim\_120772' + 'ZI.Summe\_Alfried\_Krupp\_Krankenhaus\_120750' + 'ZI.Summe\_TK\_Rothe\_Erde\_120752' + 'ZI.Summe\_Mann' + 'ZI.Summe\_TKS\_Bochum\_120786' + 'ZI.Summe\_Salzgitter' + 'ZI.Summe\_Buderus\_Wetzlar\_116060' + 'ZI.Summe\_Schwenk\_Zement\_125934' + 'ZI.2275' + 'ZI.2275'

Errors are highlighted  
Finds bad values quickly  
Finds nested calculations  
Uses API SDK  
Easy to use

Saves investigation time  
and money





# Extended Use of AF / AF SDK

## COMPANY and GOAL

RWE Supply & Trading is the commercial center of RWE, and wanted to save time and money with their tools by means of AF and AF SDK



## CHALLENGE

Old applications make use of different configurations, old PI API versions and are not redundant

- Multiple versions of the truth
- Old and different toolsets
- Difficult to make changes in old configuration

## SOLUTION

In-house workshop gave us know-how and idea to create RWE plant model and use AF for new tools

- Using AF modeling and the AF SDK gives us the ability to create whatever we want
- “Our only limitation, is our imagination”

## RESULTS

More flexibility and transparency, and the ability to react instant because of PI Coresight

- AF modeling gives flexibility and saves time
- PI Coresight gives 24/7 insight on iPhone
- Future tags replaces external databases



## Questions

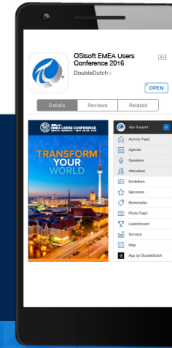
Please wait for the **microphone** before asking your questions



State your **name & company**

## Please remember to...

Complete the Online Survey for this session



Download the Conference App for **OSISOFT EMEA Users Conference 2016**

- View the latest agenda and create your own
- Meet and connect with other attendees



search **OSISOFT** in the app store

<http://ddut.ch/osisoft>



감사합니다

谢谢

Danke

Merci

Gracias

Thank you

ありがとう

Спасибо

Obrigado



OSIsoft.

EMEA USERS CONFERENCE • BERLIN, GERMANY

© Copyright 2016 OSIsoft, LLC