



OSIsoft®

EMEA USERS CONFERENCE

BERLIN, GERMANY • SEPT 26-29, 2016



OSIsoft.

EMEA USERS CONFERENCE • BERLIN, GERMANY

© Copyright 2016 OSIsoft, LLC



Event Frames, How to Provide Context to Critical Events, Pharma and Life Sciences

Presented by **Paula Baquer & Hervé Bajolle**



The real title...

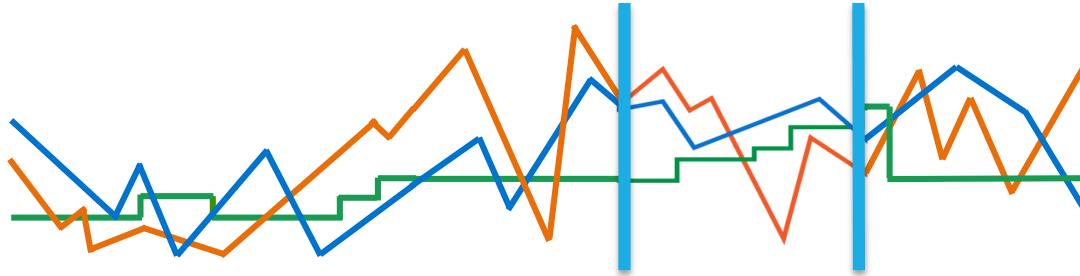


**How do I find my
data!!????!!,
It's 6PM and My Boss
Needs an Answer NOW!**

Presented by **Paula Baquer & Hervé Bajolle**



**This is
important!**



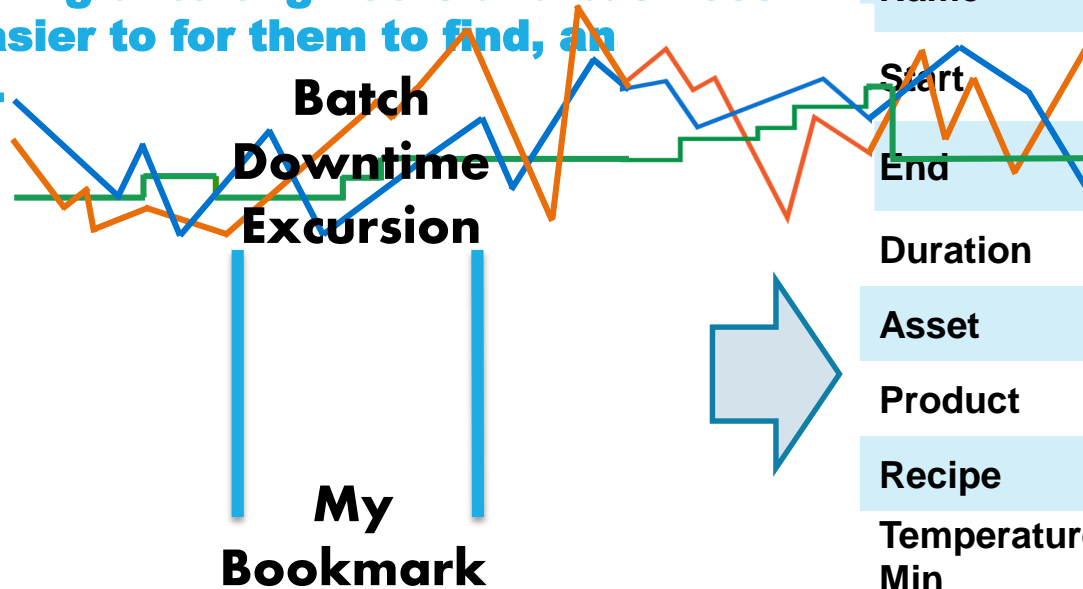
**Hey Boss, take
a look at this!**

**Let's
bookmark
this!**



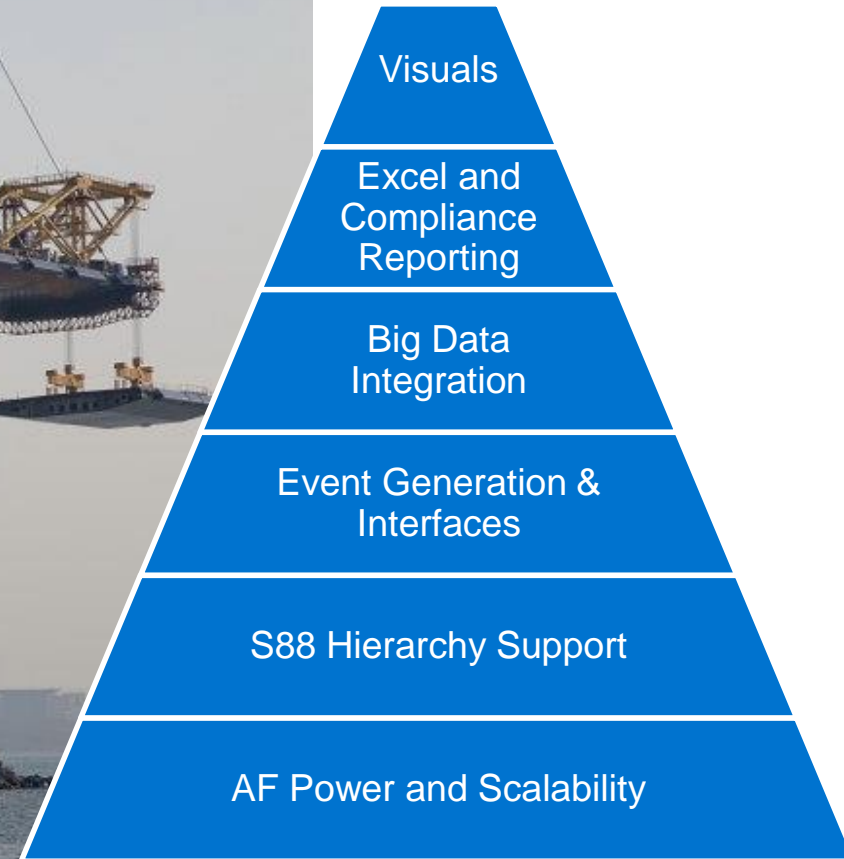
Event Frames

Event Frames automatically **bookmarks** and summarizes PI System time-series data so that it's more meaningful to engineers and business users, **AND** easier for them to find, and report on.



Event Attribute	Value
Name	Ex 20121215-0002
Start	15-Dec-2012 10:35:02
End	15-Dec-2012 10:47:26
Duration	12 min, 24 sec
Asset	Bioreactor 342
Product	Xhum23
Recipe	43F
Temperature Min	19 C
Agitator Max	4 RPM

PI System in 2016: Event Infrastructure Capabilities



What are our customers saying?

"Clearer picture of my process."

"Easier Batch Analysis."

"Easily Analyze Events."

"Saves a lot of time to automatically link data to events."

"More configuration, less programming."

"View our time series data in a meaningful way."

"Easier reporting."

"Early event detection before they become a problem."

"An integrated system is a force multiplier."

"EF are the life line for our process data."

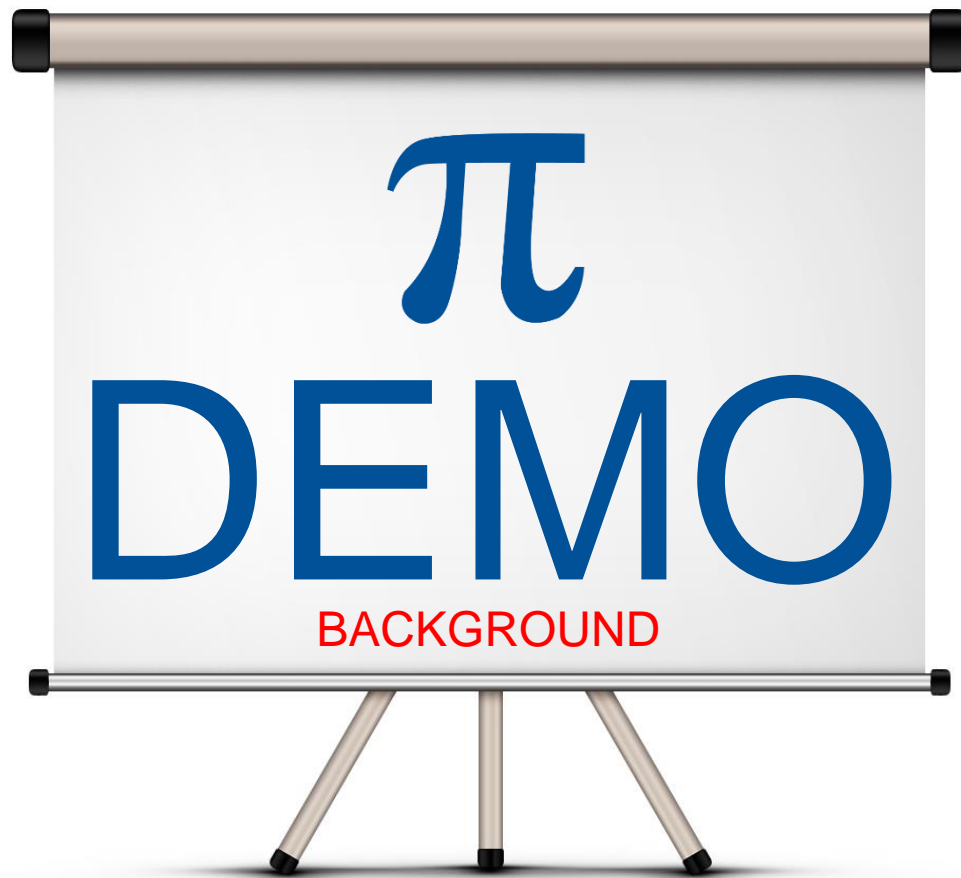
"Event Frames may be the single most powerful thing you guys have done..., and now that we are starting to use them more, we are finding more use cases."



OSIsoft.

EMEA USERS CONFERENCE • BERLIN, GERMANY

© Copyright 2016 OSIsoft, LLC



OSIsoft Event Frames UC Stories



UC2013



UC2014



UC2015



OSIsoft.

EMEA USERS CONFERENCE • BERLIN, GERMANY

© Copyright 2016 OSIsoft, LLC



UC2016 ...

Pharma & Life Sciences

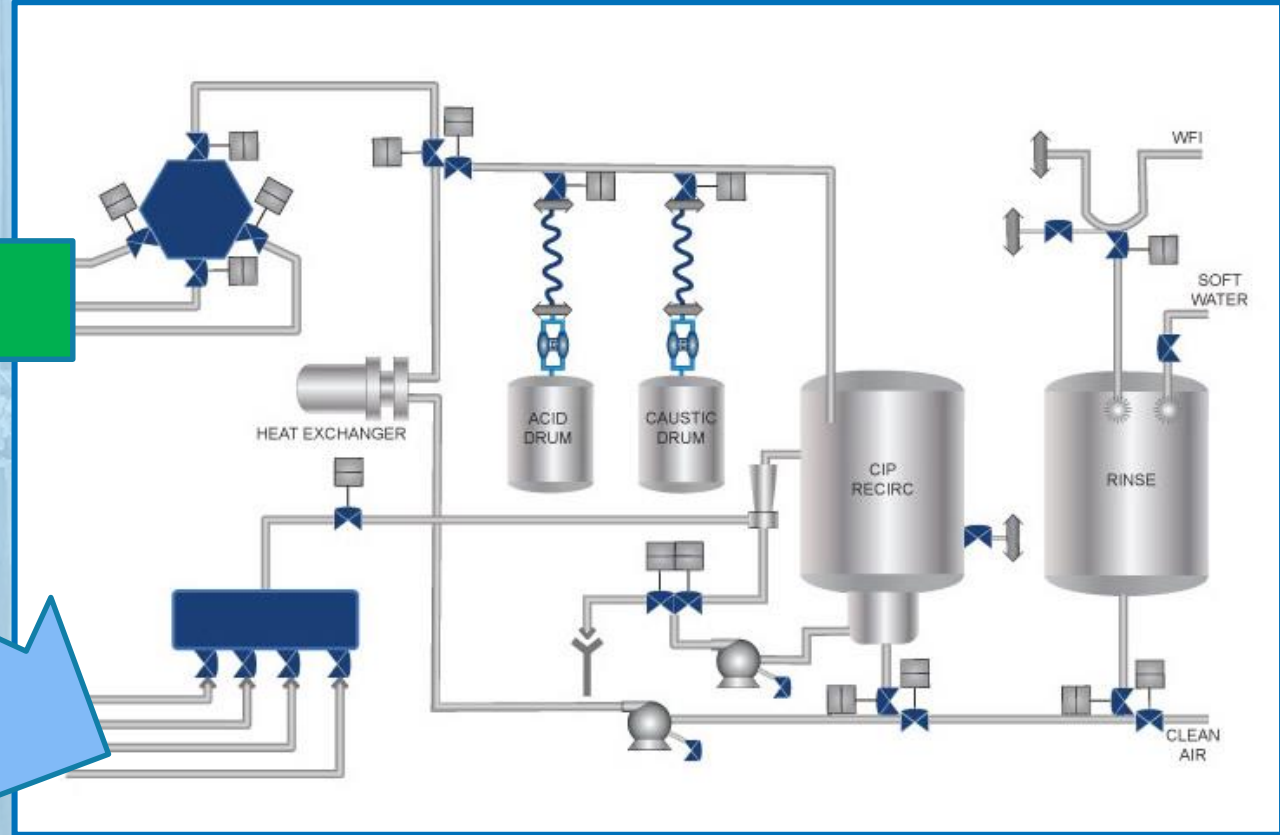
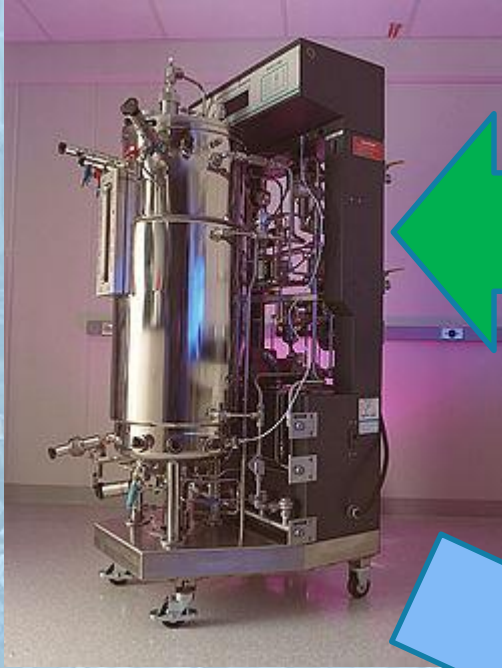


OSIsoft.

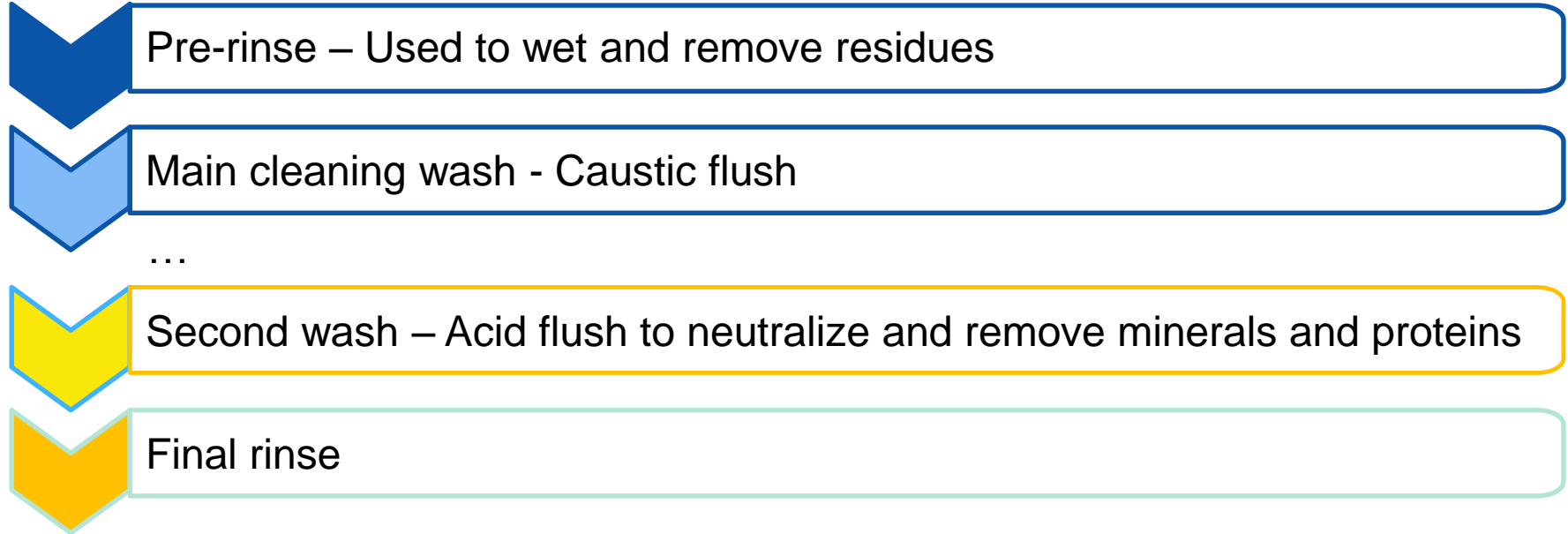
EMEA USERS CONFERENCE • BERLIN, GERMANY

© Copyright 2016 OSIsoft, LLC

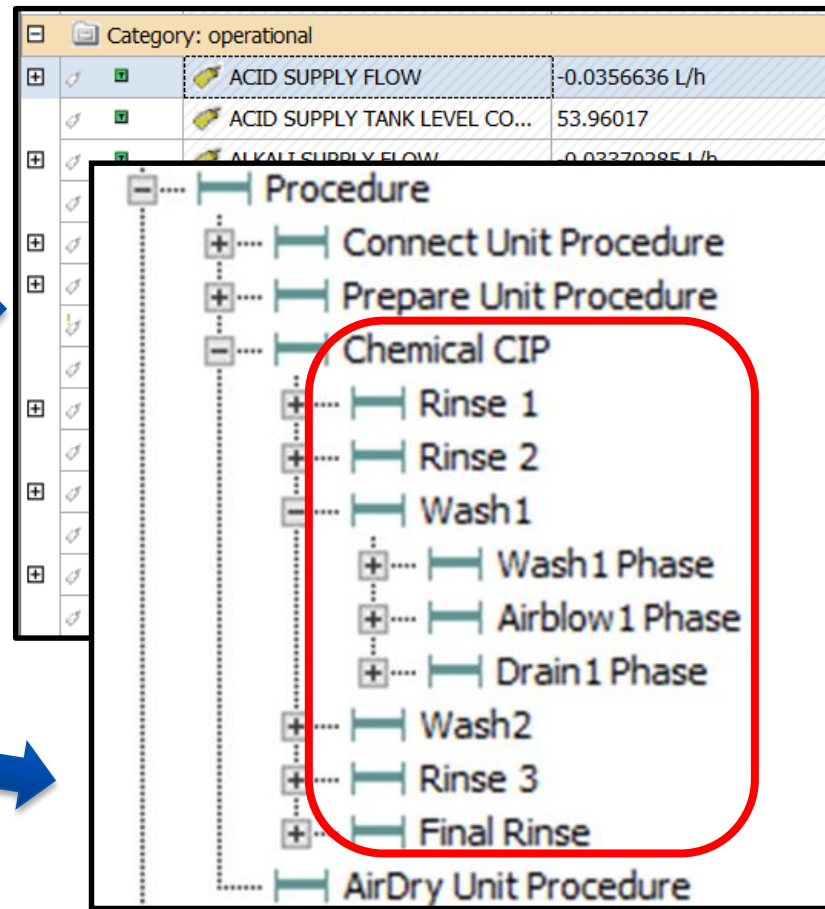
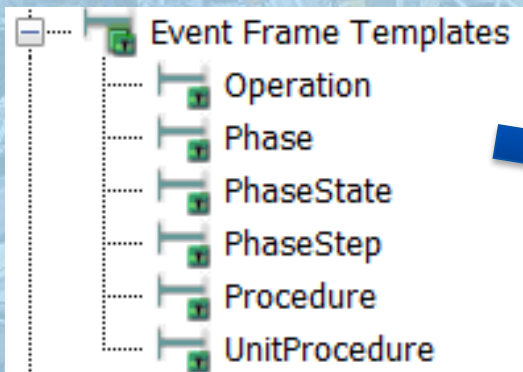
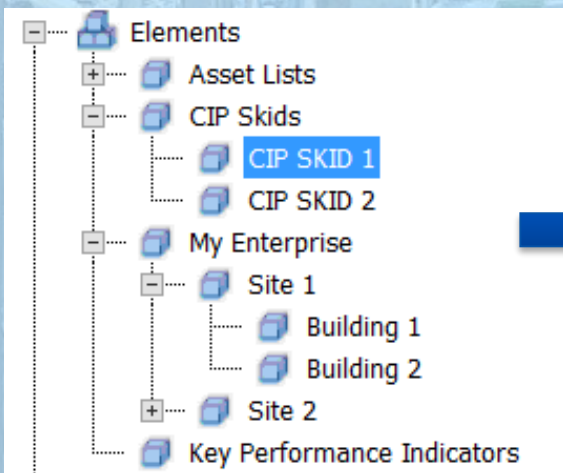
Clean in Place - CIP



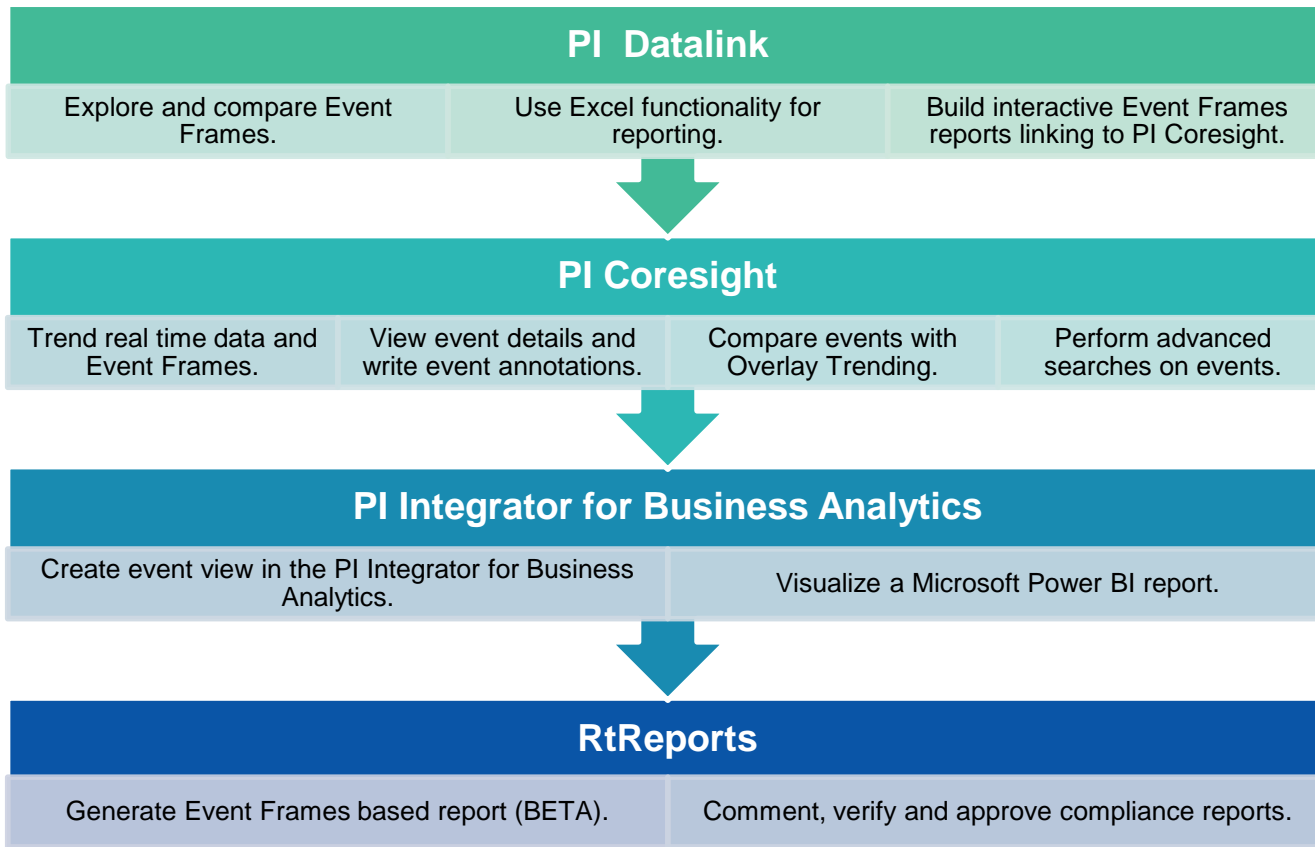
Clean in Place - CIP

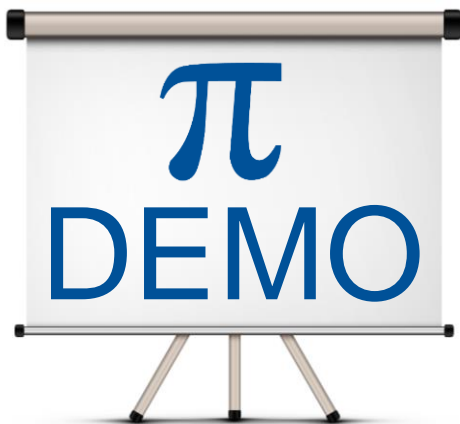


CIP Skids



Event Frames Demo – What you're going to see





PI Datalink and PI Coresight



PI Datalink and PI Coresight Demo

Recipe DatalinkViewUCEU2016 - Excel

FILE HOME INSERT PAGE LAYOUT FORMULAS DATA REVIEW VIEW POWER QUERY PI DATALINK PI BUILDER

Clipboard Font Alignment Number

Heading 2 Heading 3 Heading 4 Title Total

20% - Accent1 20% - Accent2 20% - Accent3 20% - Accent4 20% - Accent5

Cells Editing

AB

Element	Event	Start Time	End Time	Duration (hh:mm:ss)	Event Template	Batch ID	Recipe	Annotations
CIP SKID Model	CIP_123_SKID							
start time		7/1/2016						
end time	*							
				Average Duration Out of Specs	#DIV/0!			

Link to PI Coresight CIP_SKID

Compare Events

Database: \\DFPISERVERBETA\Batch Manuf

Event name: *

Search start: CHEM_123_SKID1882

Search end: CHEM_123_SKID1883

Event template: Unit Procedure CIP

Element name: CHEM_123_SKID1881

Element template: *

Limit to database level: ☐

More search options

Preview

Events (33 found)

- UP_CIPSKID_CHEMICIP:1
- UP_CIPSKID_CHEMICIP:1
- UP_CIPSKID_CHEMICIP:1
- UP_CIPSKID_CHEMICIP:1
- UP_CIPSKID_CHEMICIP:1
- UP_CIPSKID_CHEMICIP:1
- UP_CIPSKID_CHEMICIP:1
- UP_CIPSKID_CHEMICIP:1
- UP_CIPSKID_CHEMICIP:1
- UP_CIPSKID_CHEMICIP:1

Columns to display

Select all

- ☒ Primary element
- ☒ Event name
- ☒ Start time
- ☒ End time
- ☒ Duration
- ☒ Event template
- ☒ Batch ID
- ☒ Recipe

Output cell: CHEM_123_SKID18487

OK Apply

ChemCIP EPWash1 Conductivity Summary SOP_bottom_up EPWash1 Conductivity Summar (2) CHEM_123_SKID

READY

PI System 6:32 AM 9/19/2016



OSIsoft.

EMEA USERS CONFERENCE • BERLIN, GERMANY

© Copyright 2016 OSIsoft, LLC

16



PI Integrator for Business Analytics





PI Integrator for Business Analytics

A data bridge between PI
and other systems

Your data experts can see radical new insights

PI Integrator for BA – 4 views of applications

General Applications

- Reporting
- Descriptive Analysis
- Predictive Analysis
- Prescriptive Analysis

Process Applications

- Trouble Shooting
- Trending
- Out of Specification Investigation (OOS)
- Real-time monitoring
- End process prediction/determination
- Optimization
- Process Analytica Technology (PAT)
- Early Fault detection

Quality Applications

- Real time release testing (RTRt)
- Batch release
- CPV/OPV (Continued Process Verification)
- Annual Product and Quality Review
- Root cause analysis
- Reporting

Management / Engineering Applications

- Site to site comparison
- CAPA (Corrective Action Preventive Action)
- De Bottlenecking
- Predict Quality attributes
- Capacity
- Calibration
- Real-time control (APC)
- Golden Batch analysis
- Scale up/down
- Supply Chain Management



PI Integrator for Business Analytics

My Views

Create Asset View
Build a data view starting with your asset hierarchy

Create Event View
Build a data view starting with your event frame hierarchy

Modify View
Modify existing data view

Remove View
Remove selected view

Run Status	Type	Run Mode	Start Time	End Time	Last Run Time
Published	Asset	Once	4/1/13 12:00 AM	9/1/13 12:00 AM	3/17/16 2:52 AM
Published	Asset	Once	3/18/13 12:00 AM	7/4/14 12:00 AM	5/3/16 3:11 PM
Published	Event	Once	7/1/16 12:00 AM	*	9/15/16 6:52 AM
Published	Asset	Once	4/1/13 12:00 AM	4/1/14 12:00 AM	4/26/16 4:42 AM
Published	Asset	Once	3/1/16 12:00 AM	4/1/16 12:00 AM	4/28/16 5:32 AM
Published	Asset	Once	7/1/16 12:00 AM	*	9/15/16 4:29 AM
Published	Asset	Once	*-8h	*	1/10/16 7:17 PM
Stopped By User	Asset	Continuous	2/1/13 12:00 AM	*	5/27/16 8:11 PM
Published	Asset	Once	3/18/13 12:00 AM	5/1/13 12:00 AM	1/10/16 6:04 PM
Published	Asset	Once	3/15/15 1:00 AM	10/15/15 2:00 AM	1/18/16 3:53 PM
Published	Asset	Once	4/1/13 12:00 AM	9/1/13 12:00 AM	5/5/16 2:30 AM
Published	Asset	Once	1/1/15 12:00 AM	12/31/15 12:00 AM	1/18/16 5:59 PM
Published	Event	Once	6/1/16 12:00 AM	*	9/16/16 8:08 AM
Stopped By User	Asset	Continuous	3/1/16 12:00 AM	*	5/27/16 7:48 PM
Published	Event	Once	12/1/15 12:00 AM	*	9/16/16 4:24 AM
Published	Asset	Once	4/1/13 12:00 AM	4/7/13 12:00 AM	11/13/15 9:14 AM
Published	Asset	Once	1/1/16 12:00 AM	*	3/6/16 2:58 PM
Published	Asset	Once	3/18/13 12:00 AM	3/20/13 12:00 AM	1/10/16 7:10 PM
Published	Asset	Once	1/1/16 12:00 AM	1/31/16 12:00 AM	2/24/16 9:08 AM
Published	Asset	Once	3/18/13 12:00 AM	7/4/14 12:00 AM	5/4/16 2:04 AM
Published	Asset	Once	3/18/13 12:00 AM	3/31/13 12:00 AM	1/10/16 6:53 PM
Published	Event	Once	7/1/16 12:00 AM	*	9/15/16 4:37 AM
Published	Asset	Once	t-30d	t	4/22/16 11:52 AM
Published	Asset	Once	10/1/15 12:00 AM	11/1/15 12:00 AM	11/18/15 10:47 AM
Published	Asset	Once	4/1/13 12:00 AM	9/1/13 12:00 AM	5/5/16 3:05 AM
Published	Asset	Once	3/15/15 12:00 AM	12/31/15 12:00 AM	1/18/16 10:20 AM
Published	Asset	Once	11/24/15 12:00 AM	12/15/15 12:00 AM	12/15/15 10:05 AM
Published	Asset	Once	*-8h	*	2/25/16 8:59 AM
Published	Asset	Once	9/1/15 12:00 AM	10/1/15 12:00 AM	1/11/16 7:03 AM
Published	Asset	Once	*-8h	*	2/3/16 1:39 AM
Stopped By User	Asset	Continuous	t	*	5/27/16 8:00 PM
Published	Asset	Once	*-12h	*	3/3/16 10:33 AM
Published	Asset	Once	t-365d	t	4/25/16 9:35 AM
Published	Event	Once	12/1/15 12:00 AM	*	9/16/16 2:54 AM
Published	Asset	Once	*-8h	*	4/21/16 3:02 AM





RtReports



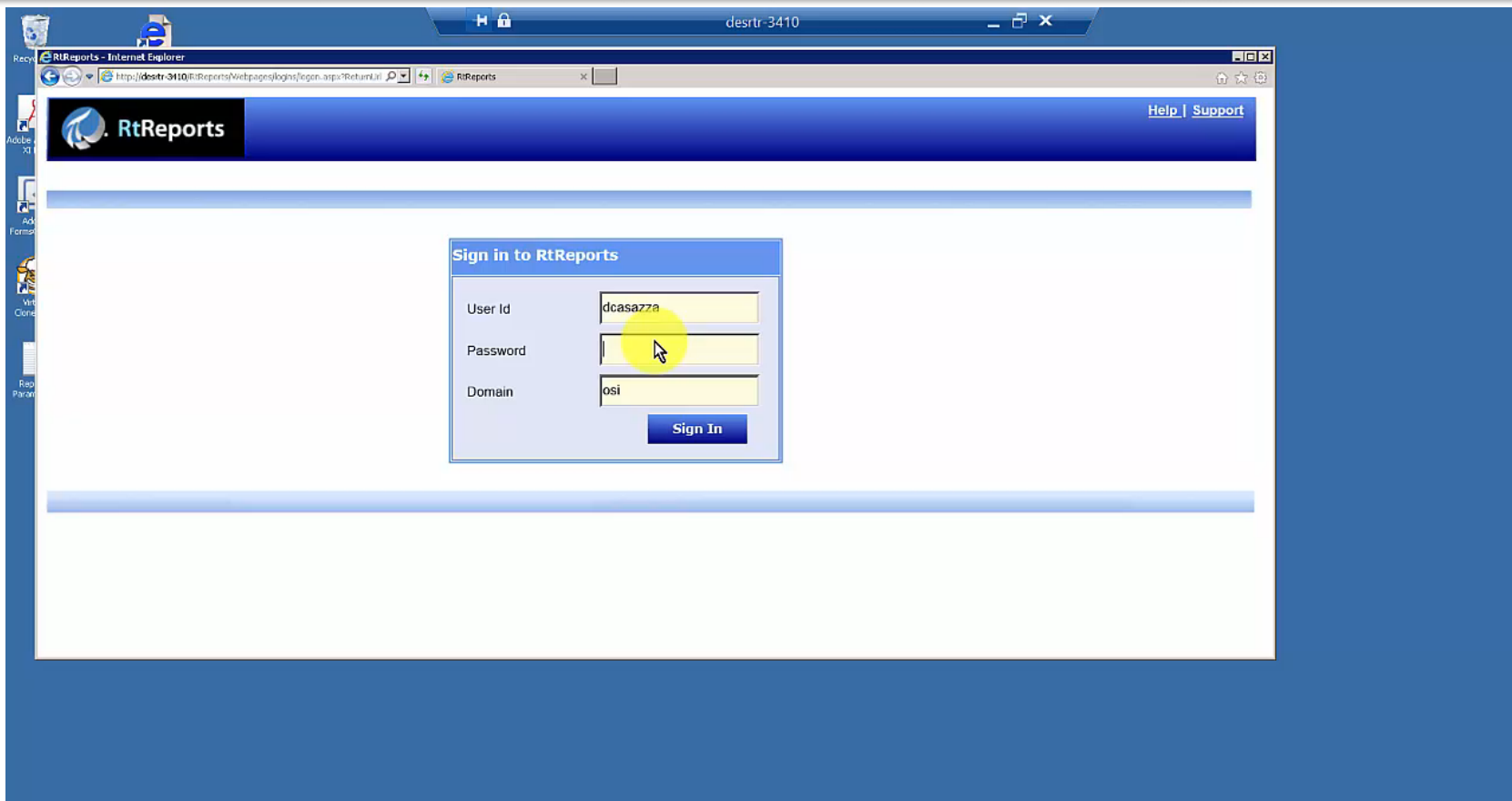
OSIsoft.

EMEA USERS CONFERENCE • BERLIN, GERMANY

© Copyright 2016 OSIsoft, LLC

21

RtReports Demo



OSIsoft.

EMEA USERS CONFERENCE • BERLIN, GERMANY

© Copyright 2016 OSIsoft, LLC

22

Event Frames Demo Recap

PI DataLink

Compare Events

Easy Event Analysis
and Reporting

Build Flexible ad hoc
reports out of the box

PI Coresight

Automatically Discover
Related Events

Event Trending

View Event Details

Perform advanced
searches on events

Event Comparison
(Overlay Trending)

PI Integrator for Business Analytics

Create Event View

Visualize a Microsoft
Power BI report.

RtReports

Generate Event
Frame Report (BETA)

Comment, Verify and
Approve Compliance
Reports (Esignature)

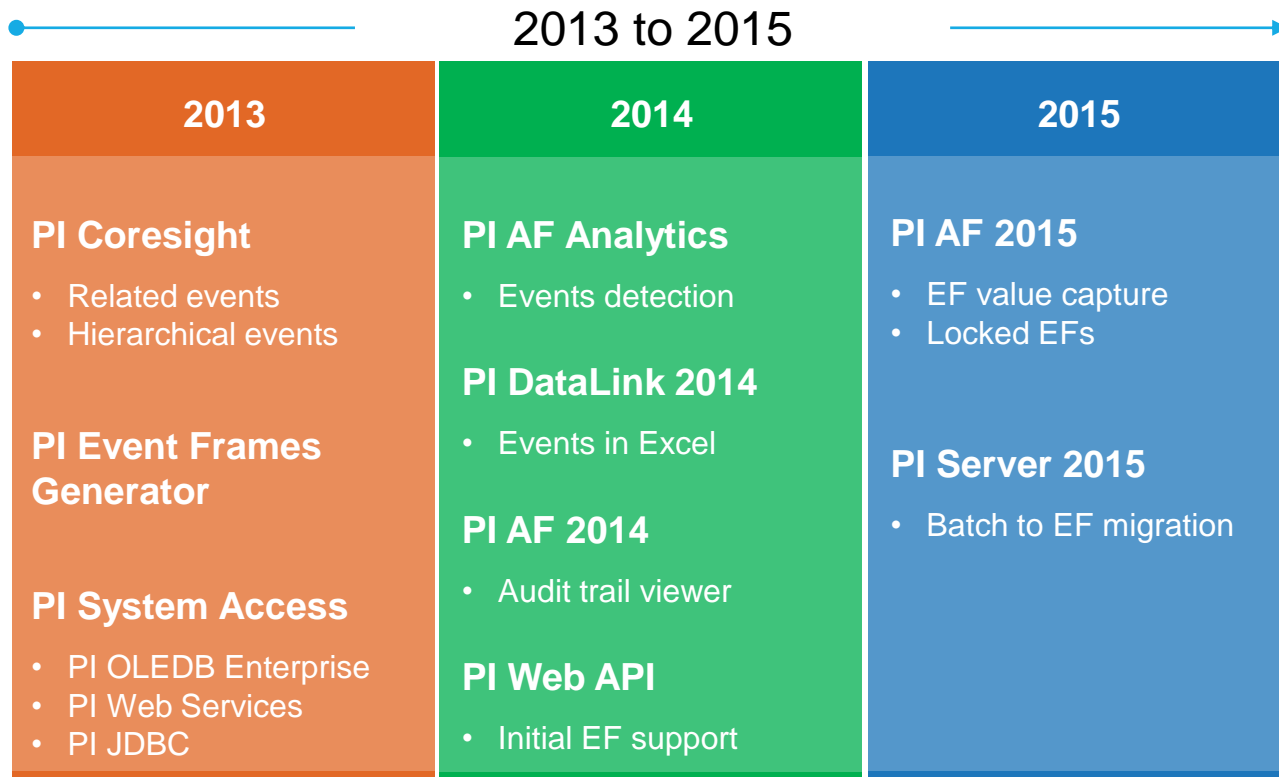




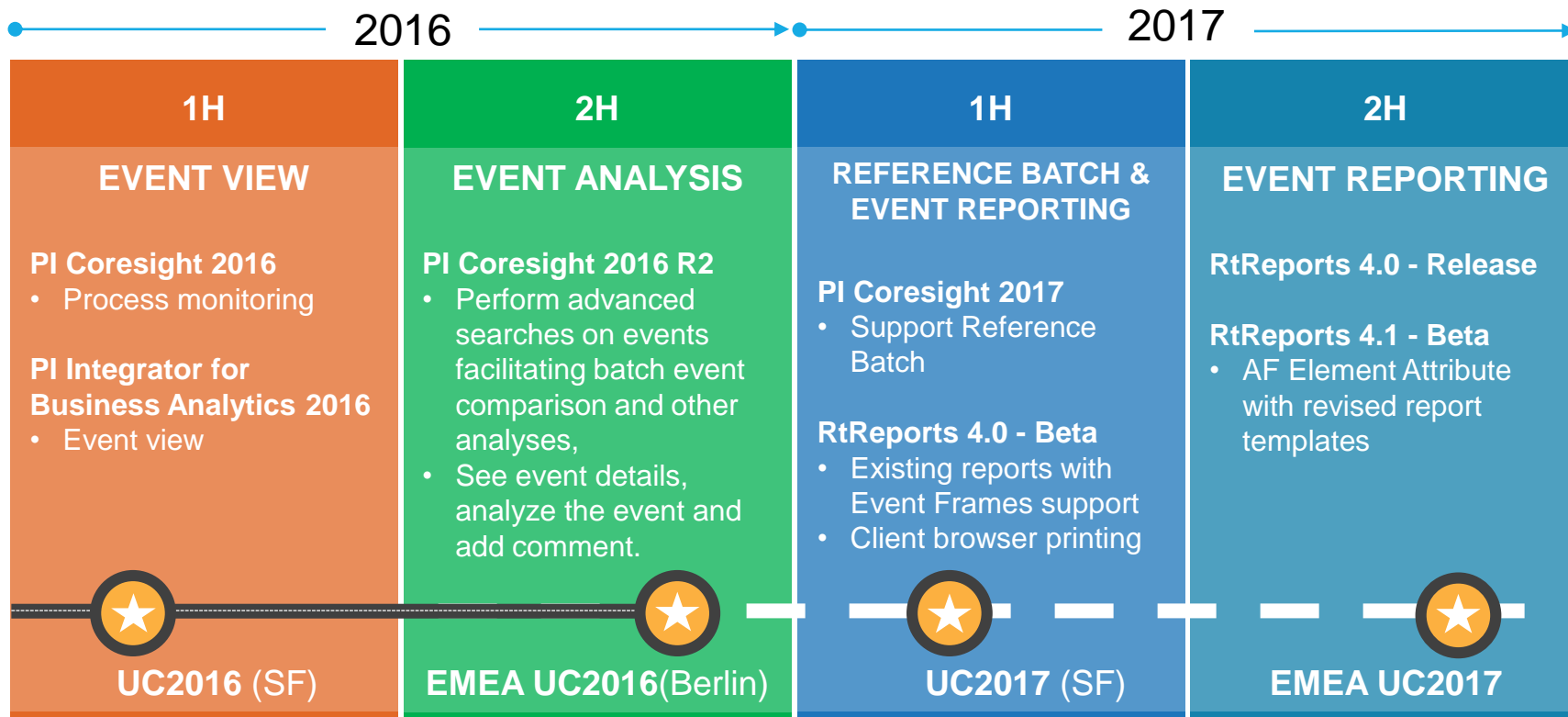
Roadmap Update



Event Frames Roadmap – The story until now



Event Frames Roadmap – The story continues



OSIsoft.

EMEA USERS CONFERENCE • BERLIN, GERMANY

© Copyright 2016 OSIsoft, LLC

Event Frames

Stick-Slip

Trips

Downtime

More than

Bookmarks for your
Real-Time Data

Your Data

Startup

High Temperature

Batch



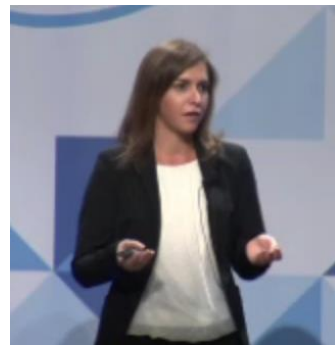
Contact Information

Paula Baquer

pbaquer@osisoft.com

Field Service Engineer

OSIsoft (UK) Ltd.



Hervé Bajolle

hbajolle@osisoft.com

Center of Excellence Engineer

OSIsoft FRANCE



OSIsoft.

EMEA USERS CONFERENCE • BERLIN, GERMANY

© Copyright 2016 OSIsoft, LLC

28

Questions

Please wait for the **microphone** before asking your questions

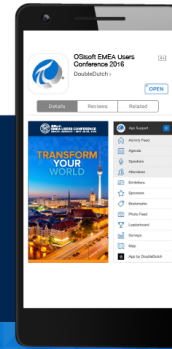


State your **name & company**

Please remember to...

Complete the Online Survey for this session

Download the Conference App for OSISOFT EMEA Users Conference 2016



- View the latest agenda and create your own
- Meet and connect with other attendees



search **OSISOFT** in the app store

<http://ddut.ch/osisoft>



감사합니다

谢谢

Danke

Merci

Gracias

Thank You

ありがとう

Спасибо

Obrigado



OSIsoft.

EMEA USERS CONFERENCE • BERLIN, GERMANY

© Copyright 2016 OSIsoft, LLC



OSIsoft®

EMEA USERS CONFERENCE

BERLIN, GERMANY • SEPT 26-29, 2016



OSIsoft.

EMEA USERS CONFERENCE • BERLIN, GERMANY

© Copyright 2016 OSIsoft, LLC