

# Conference Theme and Keywords

Reliability  
Millions of Streams  
Real-time  
Visualization  
CBM  
Scalability  
Asset Framework  
PI System  
Analytics  
Quality  
IoT  
Connectivity  
Sensor-based Data  
Big Data  
Infrastructure  
High Speed  
Business Transformation  
Security  
Connected Services  
Operational Intelligence  
Regulatory Compliance  
Enterprise Agreement  
Business Impact  
Enterprise  
Process  
Operational Efficiency  
Time Series  
Event Frames  
Future Data  
Energy Management  
Streaming Data  
Open System  
Asset Health  
Safety





OSIsoft®

# EMEA USERS CONFERENCE

BERLIN, GERMANY • SEPT 26-29, 2016



OSIsoft.

EMEA USERS CONFERENCE • BERLIN, GERMANY

© Copyright 2016 OSIsoft, LLC



# PI Integrator for Esri ArcGIS

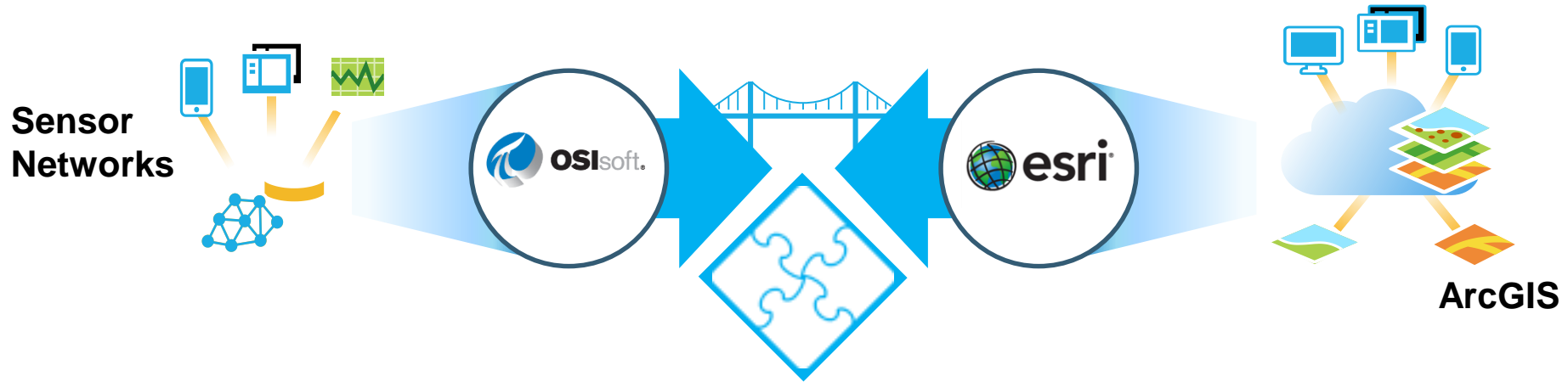
Sparkling Maps are just the beginning

Presented by **Vadim Fedorov, OSIsoft**

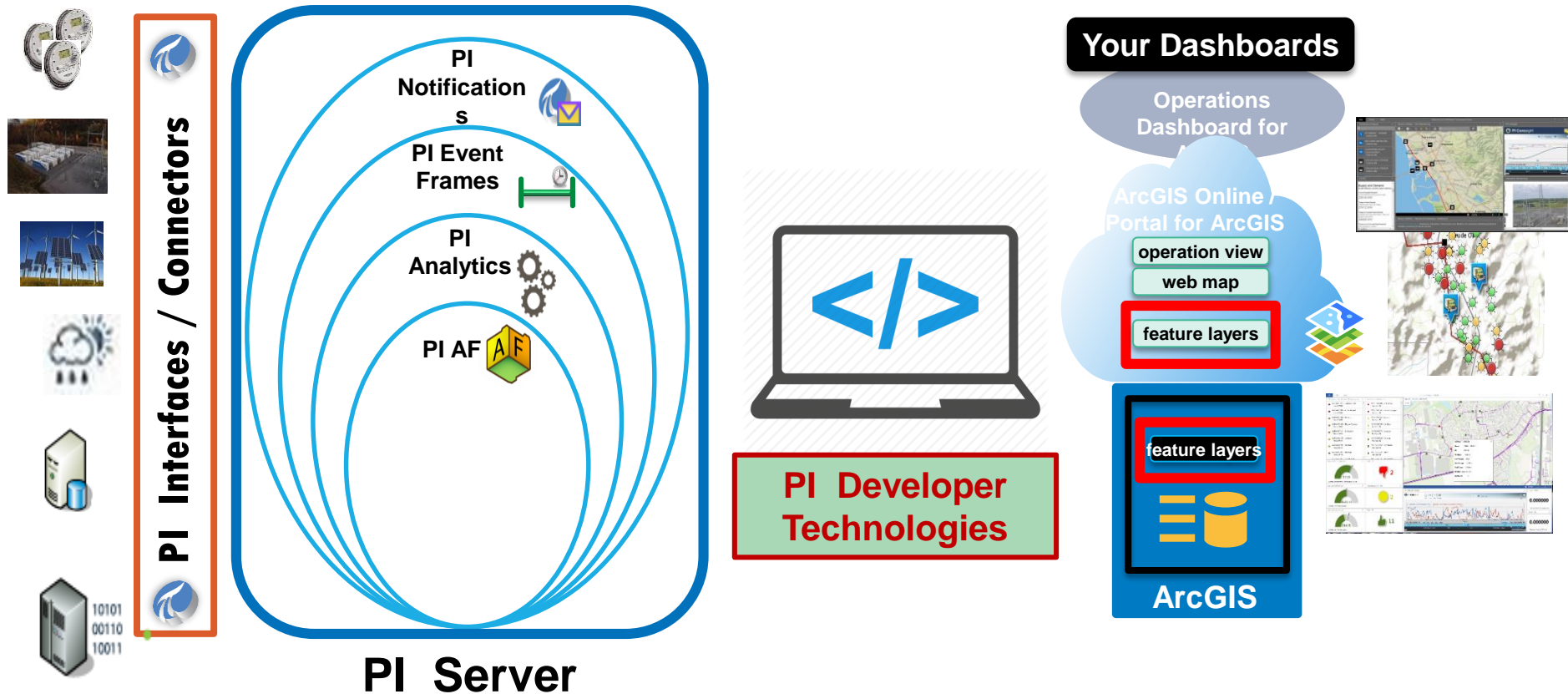


# Two companies One Vision

We believe data in the hands of smart people can create amazing insights, business improvements, and value

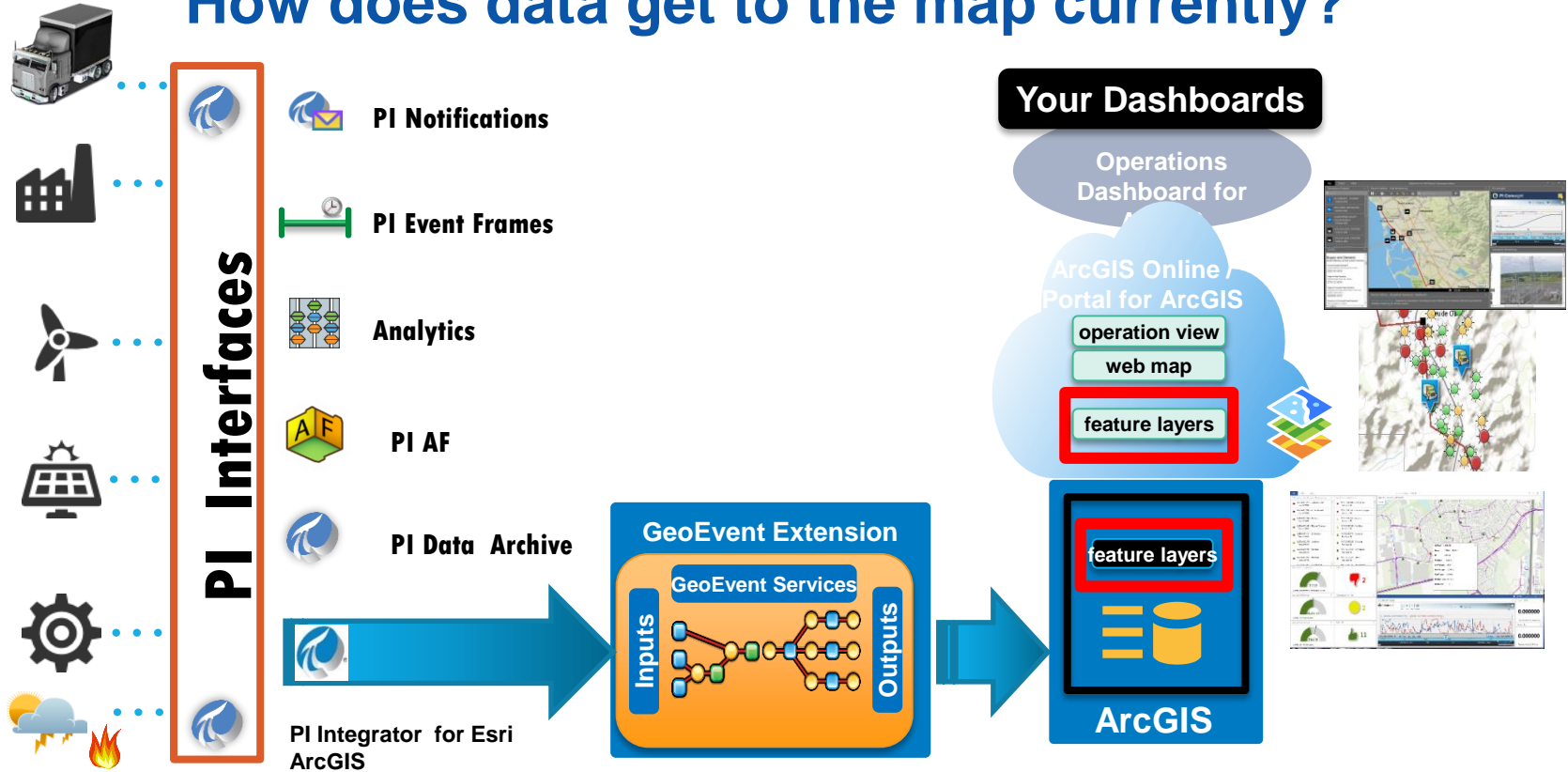


# Before the Integrator - How did data get to ArcGIS?





# How does data get to the map currently?



OSIsoft.

EMEA USERS CONFERENCE • BERLIN, GERMANY

© Copyright 2016 OSIsoft, LLC

# How easy is it?

https://portaltest01.osisoft.int/pigeoportal/configuration#/service

PI Integrator for Esri ArcGIS ...

File Edit View Favorites Tools Help

Share Browser WebEx

01 Introduction and Ge... LiveLab - Stations Esri Files on SkyDrive ELT ProjMgmt TFS Esri TFS RLink TFS WideData TFS Suggested Sites Web Slice Gallery

Page Safety Tools

PI Integrator for Esri ArcGIS Services Administration Tools Help

OSI\mkuiee

home / services / CatCanyonWells

Service CatCanyonWells

View in services directory

0&G wells in the Cat Canyon field

Created on 03/22/2016 02:15:39 (13 minutes ago)

Layers (2)

Layers allow you to select data from the PI System to connect to the ArcGIS Platform. Layer data can be exposed in different ways. You can configure these capabilities after you have created a layer.

Create Layer Tile view

Name	Description	Created	Modified	Active connections
Blockman	Wells operated by Blockman	03/22/2016 02:17:15	03/22/2016 02:17:15	1
Dominion	Wells operated by Dominion	03/22/2016 02:20:20	03/22/2016 02:20:20	1

© 2015 OSISOFT, LLC | Contact us

EMEA USERS CONFERENCE • BERLIN, GERMANY

© Copyright 2016 OSISOFT, LLC

7



# Customer Use Cases



# Alliander – Real-time visualization of MV grid

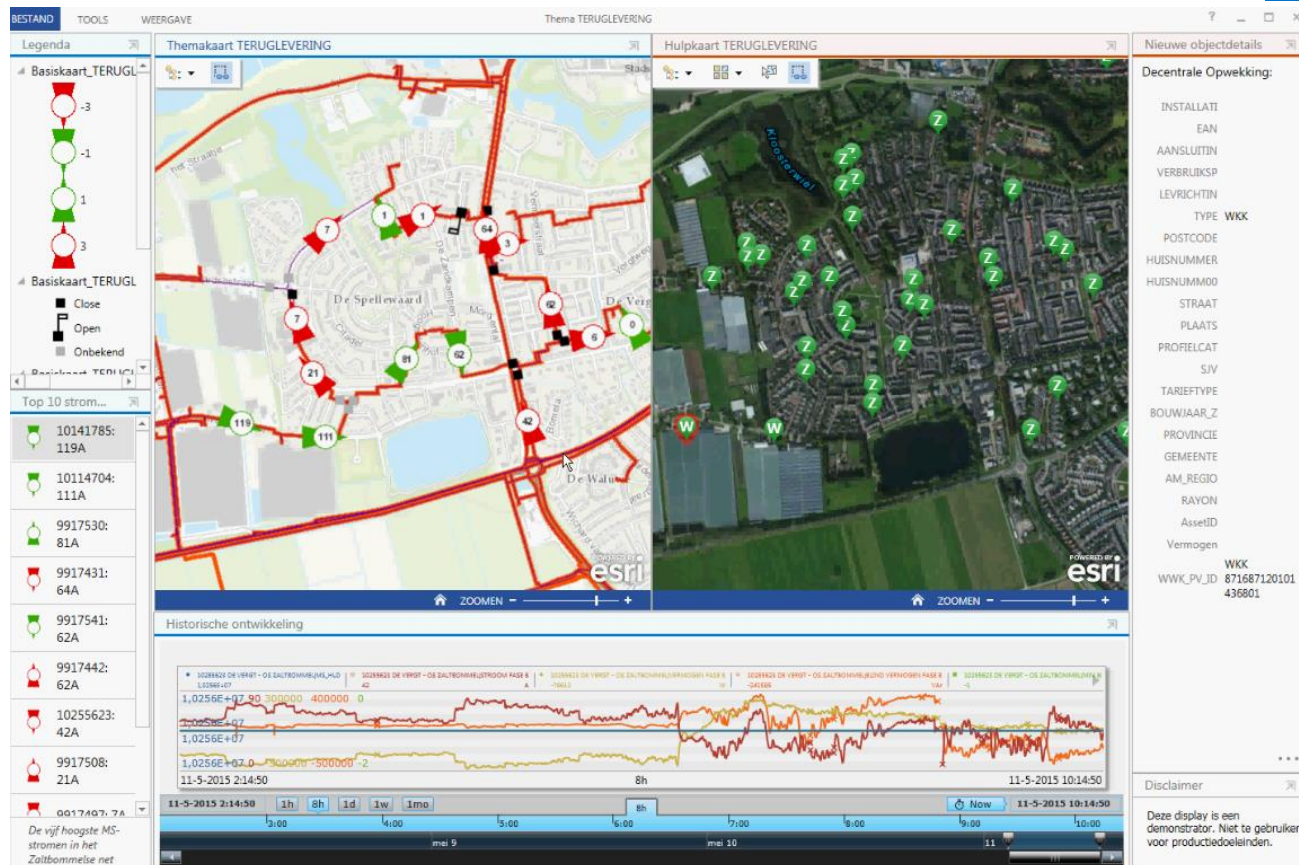


## Distributed Generation

Auxiliary,  
synchronized map  
offers context  
information

Power flow direction  
Green colour – to  
substation.

Coresight widget to  
inspect trend data for  
selected feature



# Alliander – Real-time visualization of MV grid

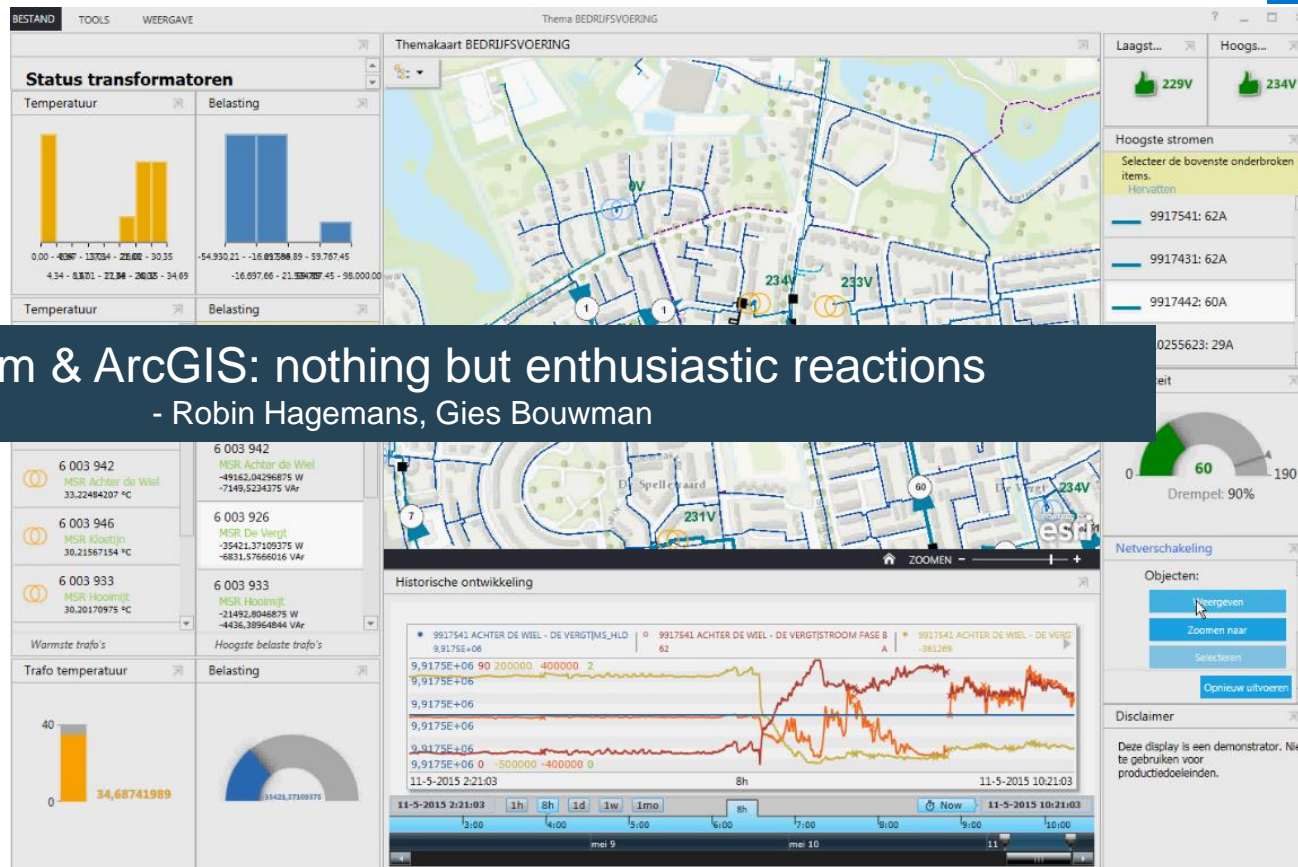


## Grid operation

Line weight reflects current

Transformer load

Symbols for actual switch states



PI System & ArcGIS: nothing but enthusiastic reactions

- Robin Hagemans, Gies Bouwman



# PJM Dispatch Interactive Map Application (DIMA)



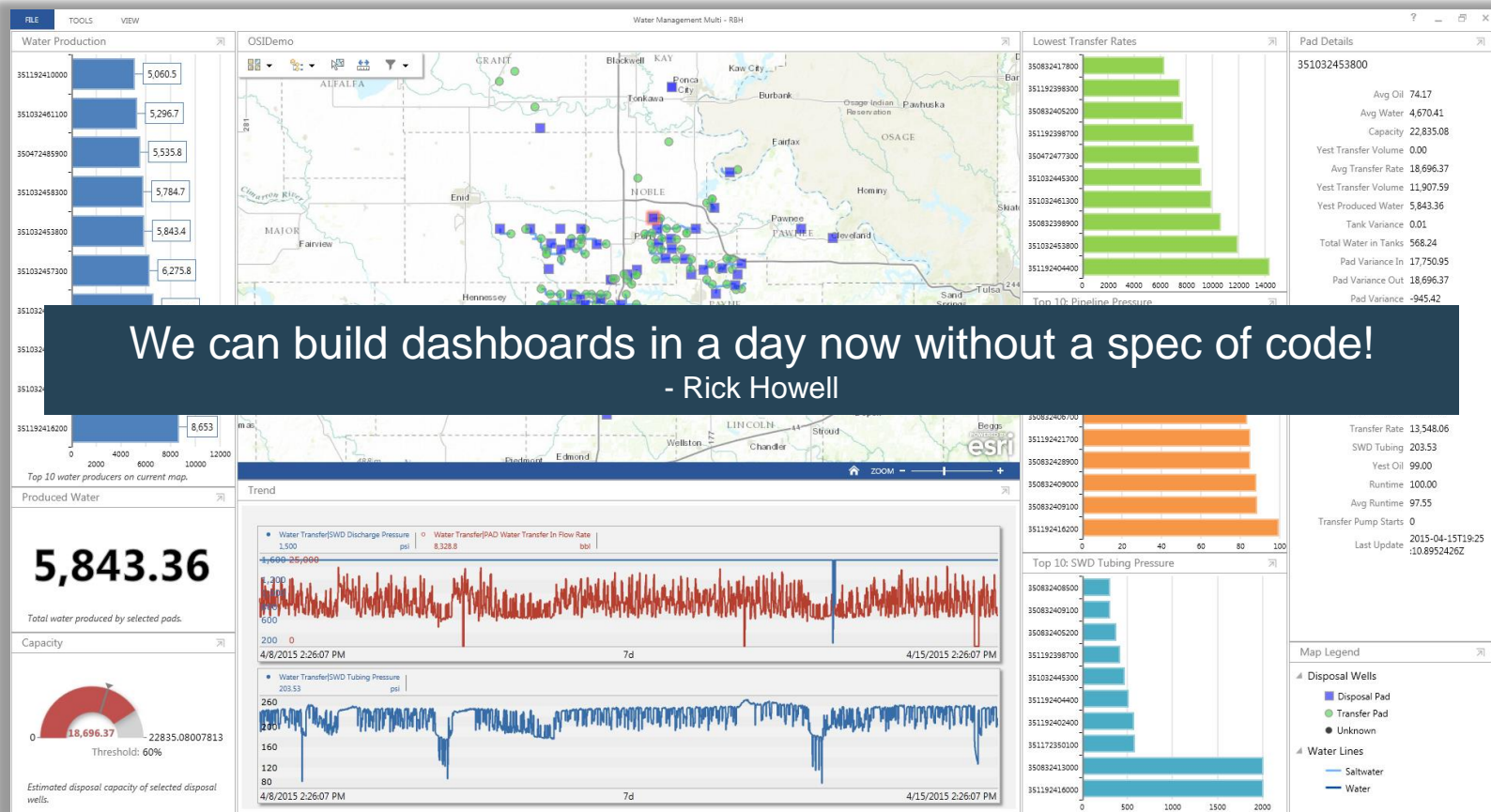
OSIsoft.

EMEA USERS CONFERENCE • BERLIN, GERMANY

© Copyright 2016 OSIsoft, LLC

13

# Devon Energy – E&P Water Management Application



We can build dashboards in a day now without a spec of code!

- Rick Howell

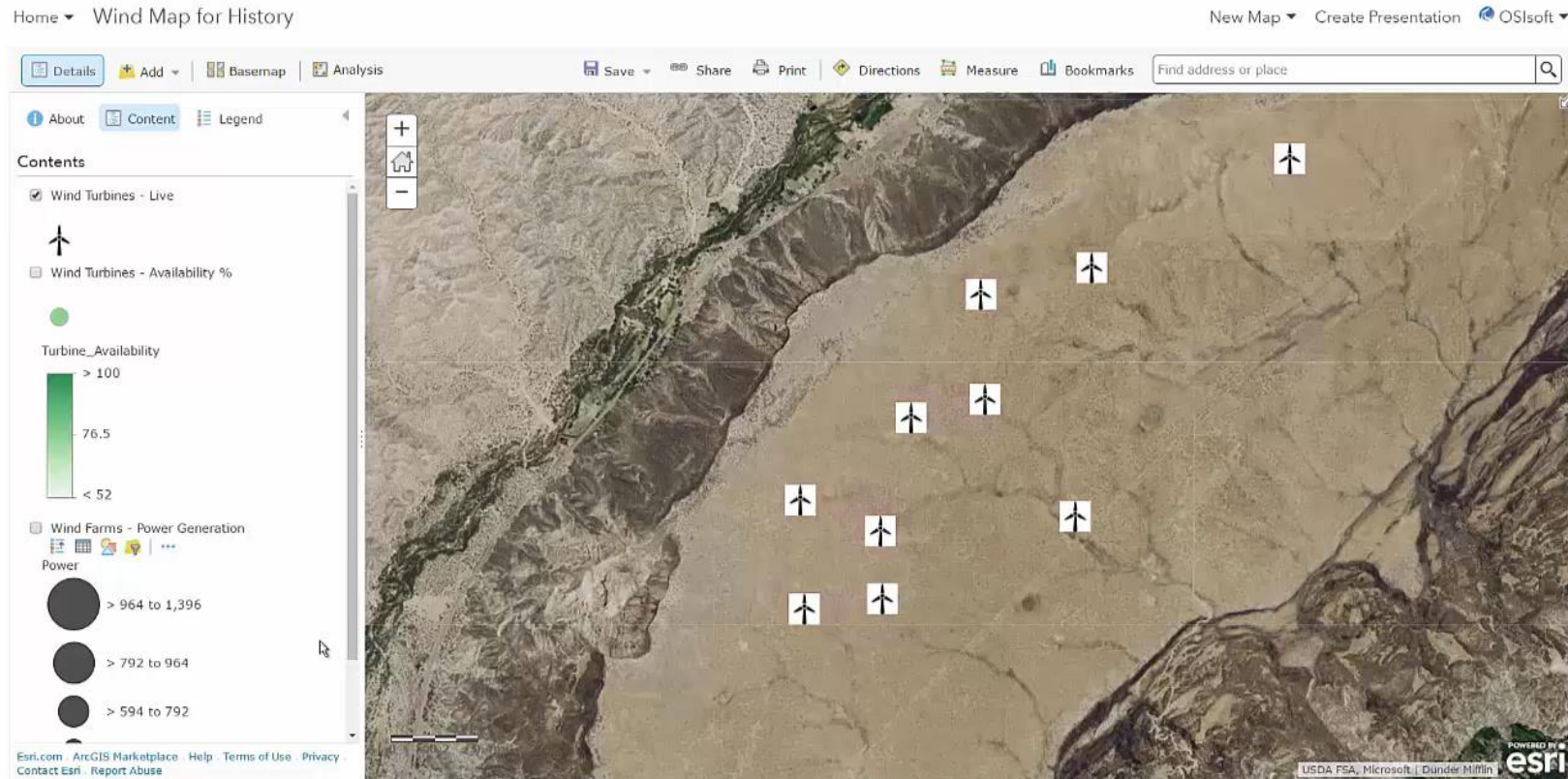






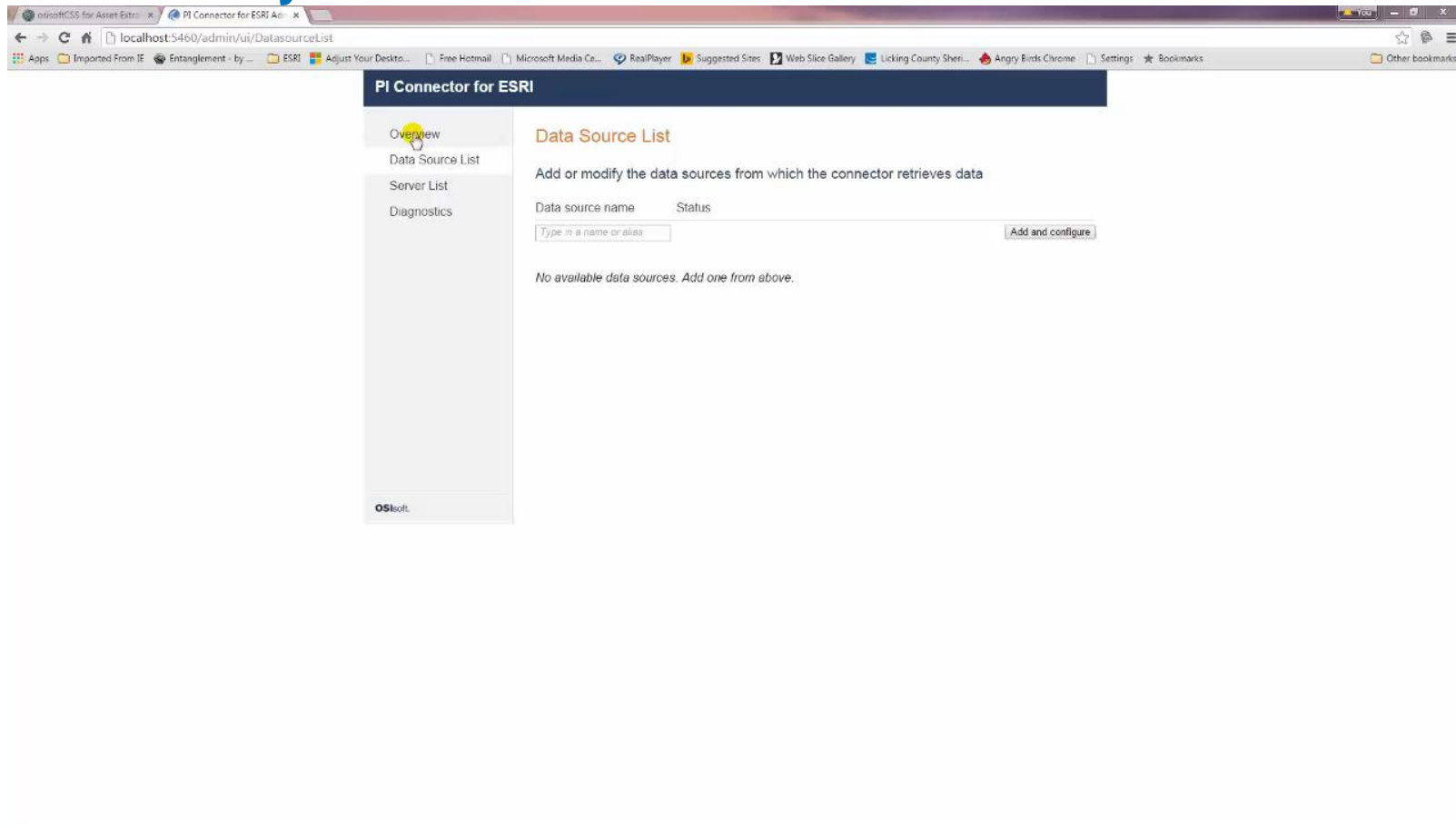
# Roadmap

# Replay PI System history on a map - “Rewindable maps”





# ArcGIS Asset synchronization - PI Connector for Esri ArcGIS



## Lowering the barriers

- Version support
  - ArcGIS 10.2.2 or later supported
- Self-Hosted Web Server
  - No longer uses IIS
  - Integrated Data Relay
- New licensing model !

# What's new in the PI Integrator for Esri ArcGIS 2017?

## New Features

- Rewindable Maps!
- Asset Sync
- Architecture
- Related Feature Service

## Widgets

- Ops Dashboard

## Product Enhancements

- Stream identification
- ArcGIS environment manageability

## Research

- Event Frames
- WebApp Builder



OSIsoft.

EMEA USERS CONFERENCE • BERLIN, GERMANY

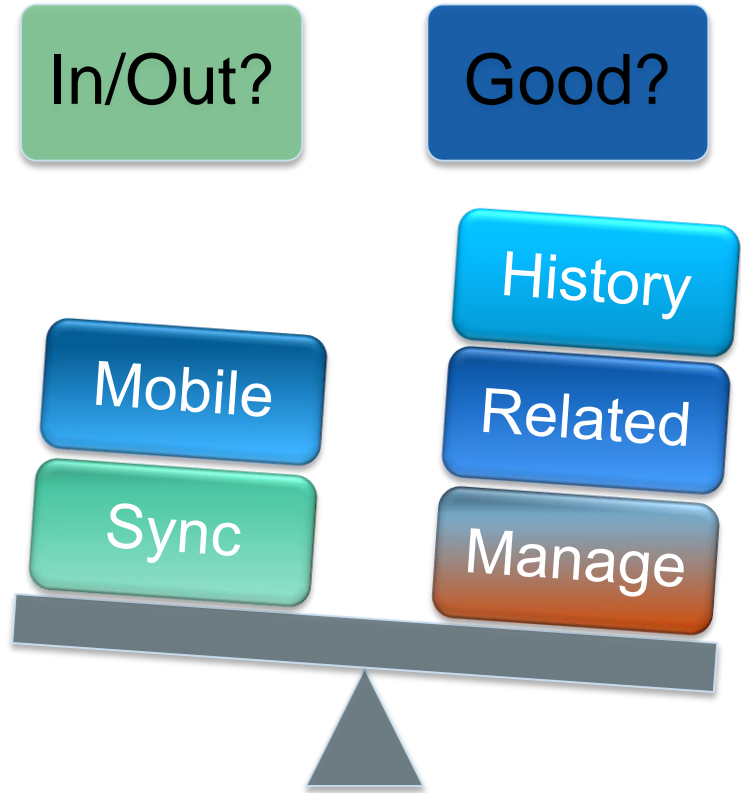
© Copyright 2016 OSIsoft, LLC



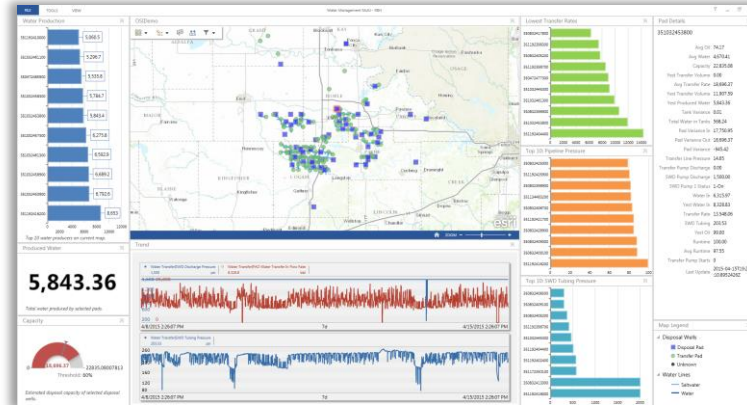
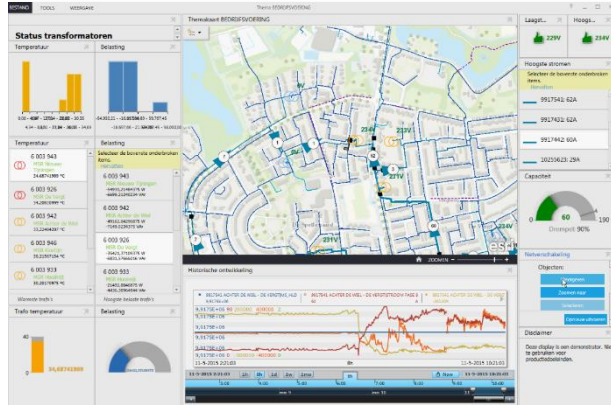
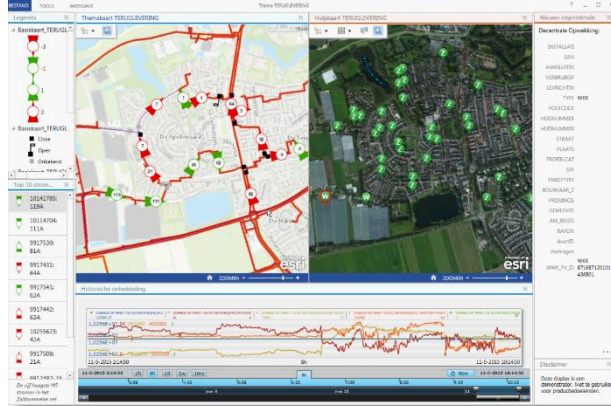
# WE WANT YOU

PI Integrator for ESRI ArcGIS  
2017 Beta available Q4 2016

[BetaIntegratorforEsri@OSIsoft.com](mailto:BetaIntegratorforEsri@OSIsoft.com)



# Beyond Sparkling Maps



# Customer Presentations at EMEA UC 2016

- Qonnectanze Project: LV Grid Phase Determination for Improved Grid Performance – [Alliander](#)
- Managing IoT with the PI System – [Maynilad Water Services](#)
- Intuitive Interpretation of Big Data Using Esri ArcGIS and the PI System – [Evides](#)

## From San-Francisco UC 2016:

- Using Operational Real-time Data to Improve Dispatchers Situational Awareness – [PJM](#)
- The Making of a PI System Data/Esri ArcGIS Operational Dashboard - [Hampton Roads Sanitation District](#)
- "Equipment" Failure is Not an Option – [PowerStream](#)
- Use Cases of the PI Integrator for Esri ArcGIS in Distribution – [SDG&E](#)



## Contact Information

**Vadim Fedorov**

Systems Engineer

OSIsoft LLC

[vfedorov@osisoft.com](mailto:vfedorov@osisoft.com)



**Esri Integrator Beta Mailbox**

OSIsoft LLC

[BetaIntegratorForEsri@osisoft.com](mailto:BetaIntegratorForEsri@osisoft.com)



## Questions

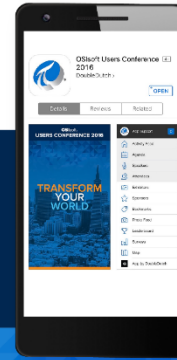
Please wait for the **microphone** before asking your questions



State your **name & company**

## Please remember to...

Complete the Online Survey  
for this session



**Download the Conference App for  
OSISOFT Users Conference 2016**

- View the latest agenda and create your own
- Meet and connect with other attendees



search **OSISOFT** in the app store



[bit.ly/emeauc16](https://bit.ly/emeauc16)



OSISOFT.

EMEA USERS CONFERENCE • BERLIN, GERMANY

© Copyright 2016 OSISOFT, LLC

25

감사합니다

谢谢

Danke

Merci

Gracias

Thank You

ありがとう

Спасибо

Obrigado



OSIsoft.

EMEA USERS CONFERENCE • BERLIN, GERMANY

© Copyright 2016 OSIsoft, LLC



OSIsoft®

# EMEA USERS CONFERENCE

BERLIN, GERMANY • SEPT 26-29, 2016



OSIsoft.

EMEA USERS CONFERENCE • BERLIN, GERMANY

© Copyright 2016 OSIsoft, LLC