





Real-time Silo Dashboard

Presented by
Tom Wassink, IT Engineer





Content

About Tom & Avebe

Business challenge

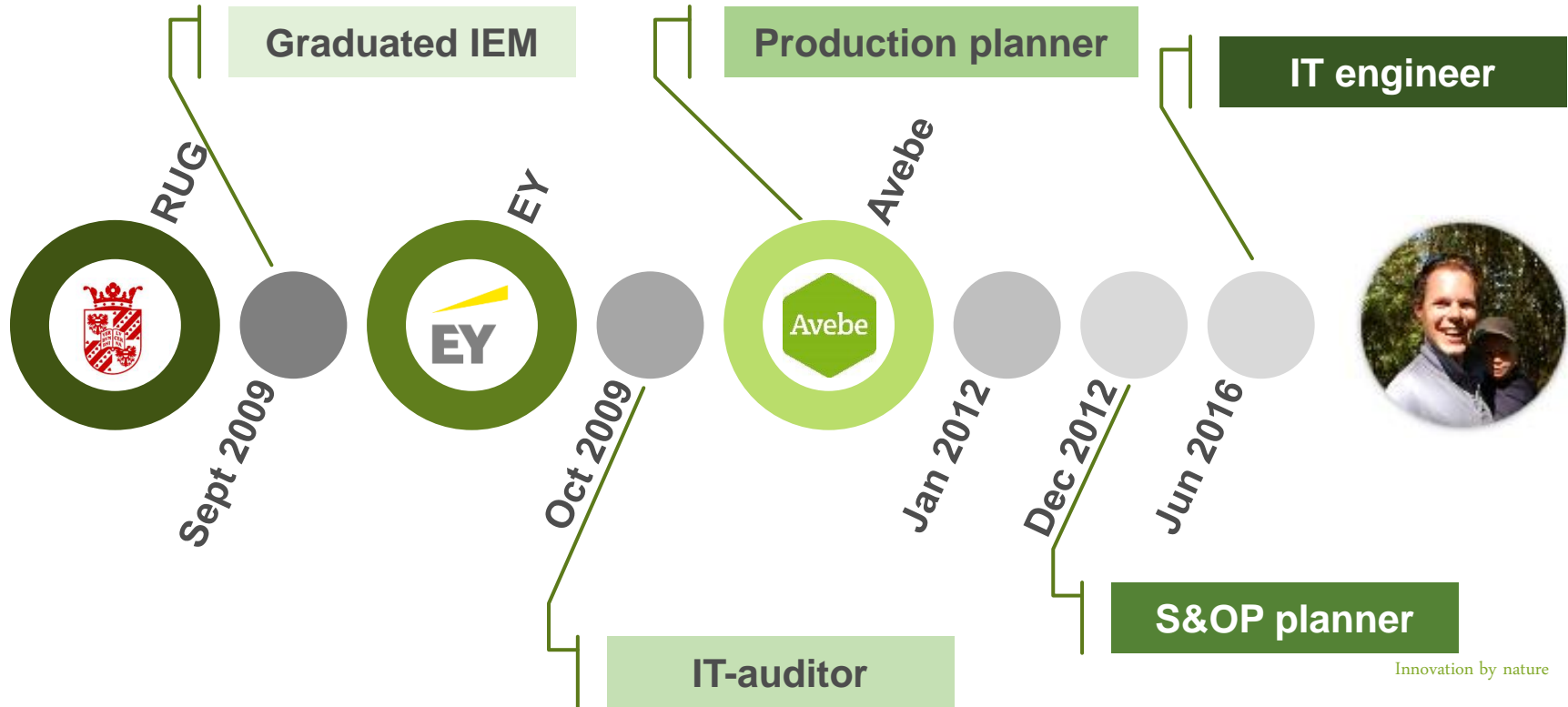
Solution with the PI System

Business impact

Summary



Tom Wassink





Manufacturing IT

MANUFACTURING OPERATIONS MANAGEMENT

Software / Application View

LEVEL 4 Enterprise / Business Operations

Business Applications

- ERP, APO, APS, CRM
- PLM, PLANT/PROCESS DESIGN
- EH&S, CMMS, BPM
- BI, DW, SCM, EQMS

LEVEL 3 Manufacturing Operations Management

MOM Applications

- WHM, Document Management
- Configure, Model, RTO, APC
- EMI / OI, Historian, Reporting, OEE
- Scheduling, Dispatching
- Asset Tracking, Mobile, RFID
- W.O., RCM, Equipment Health
- MRP, IEM SmartGrid, TIS
- MES, EWI, Tracking, Batch
- Time Track, Training, OTS
- SPC/SQC, HACCP, LIMS

LEVELS 2,1,0 Industrial Automation

Automation Applications

- PLC / PAC
- Safety
- Motion
- DCS



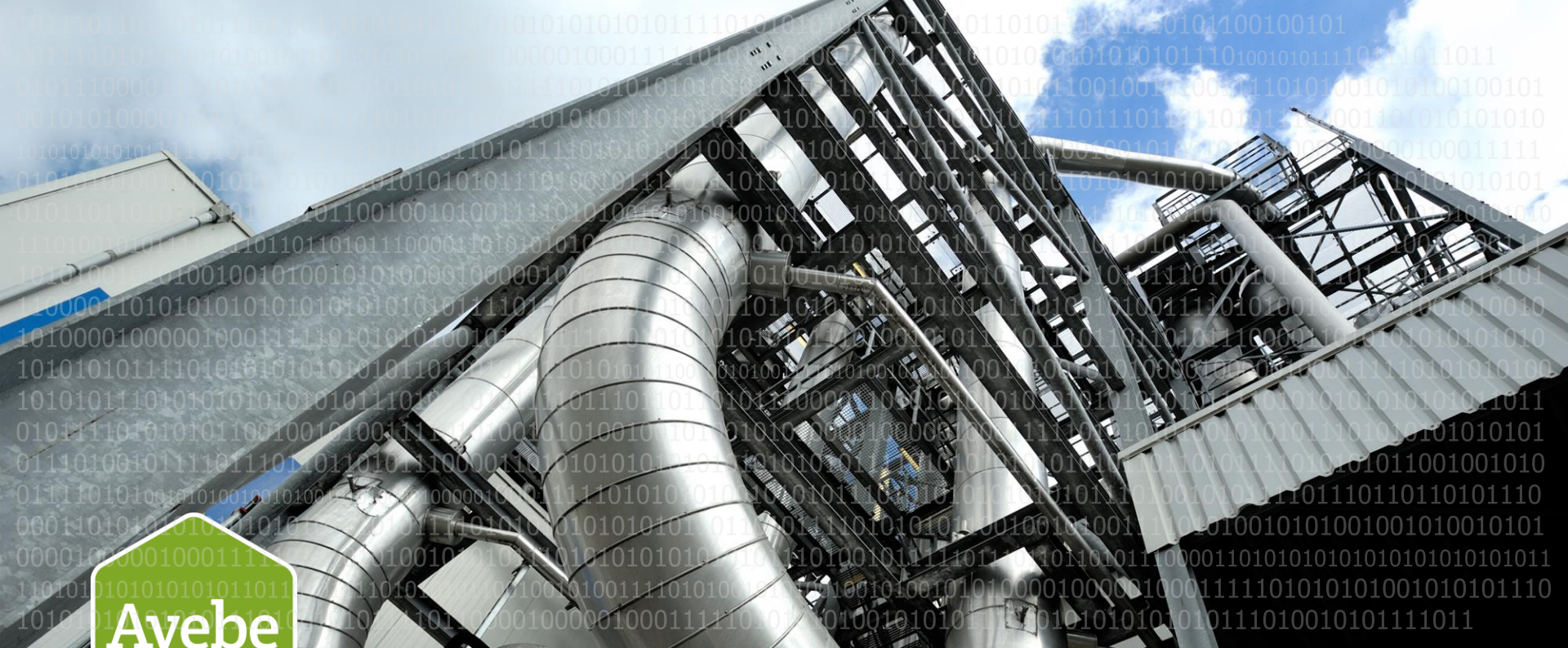
ICT



Manufacturing IT



Innovation by nature



Avebe Factory4.0 Operations Strategy 2017 – 2023 - 2028





Avebe Factory4.0 – Business Drivers

- Create a step change in the plant from average performance to **World Class Predictable Excellence**
 - Reduce operating costs
 - Reduce utilities usage
 - Reduce quality costs
 - Increase capacity
 - Increase throughput and yields
 - Reduce business risk





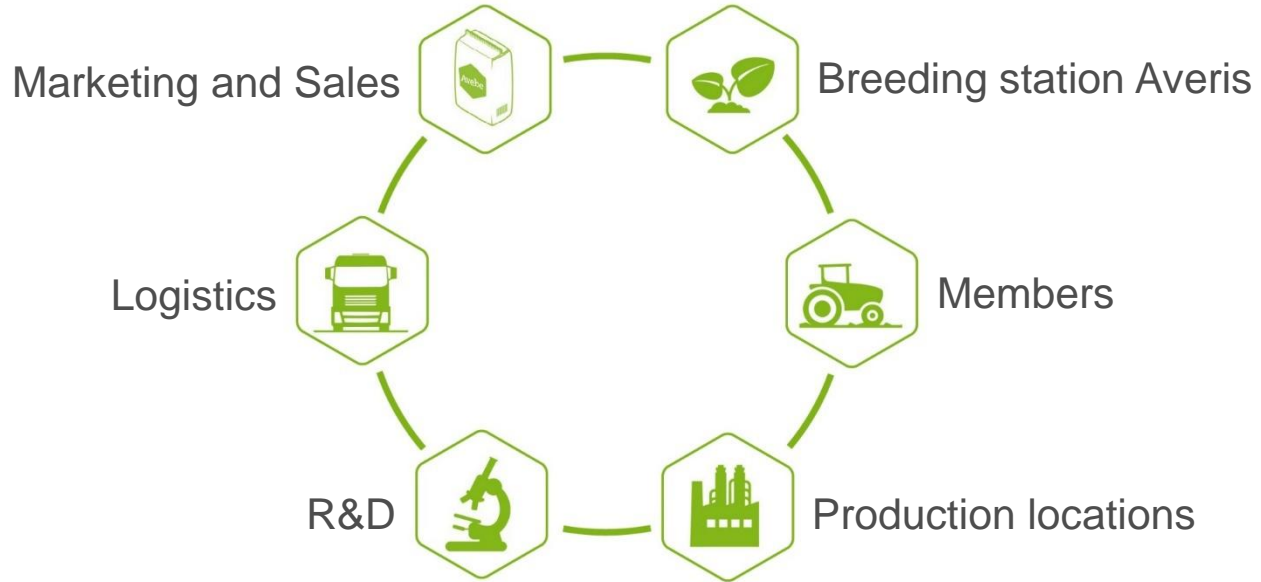
About us

- Global leader in **potato starch & proteins**
- Founded in 1919
- An international farmer's cooperative with over 2.500 members and a worldwide customer base
- Exceptional in R&D and innovation based on potato starch, starch derivatives, proteins and fibres





Value Chain Control





Key figures

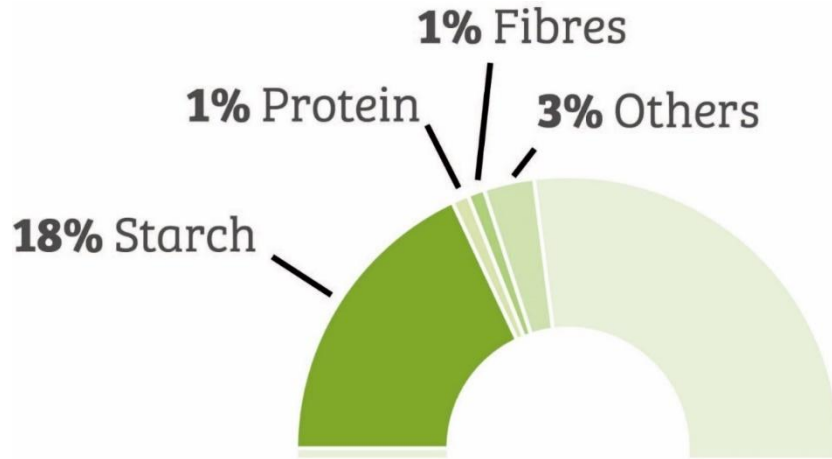
<u>Year</u>	<u>2015/2016</u>
Net turnover (in millions of Euro's)*	548,60
Performance price (EUR/ton)*	77,10
Solvability	48,8%



Our mission is to achieve an optimum performance price for our members.



Ingredients of the potato



We extract all valuable ingredients of the potato



Production locations



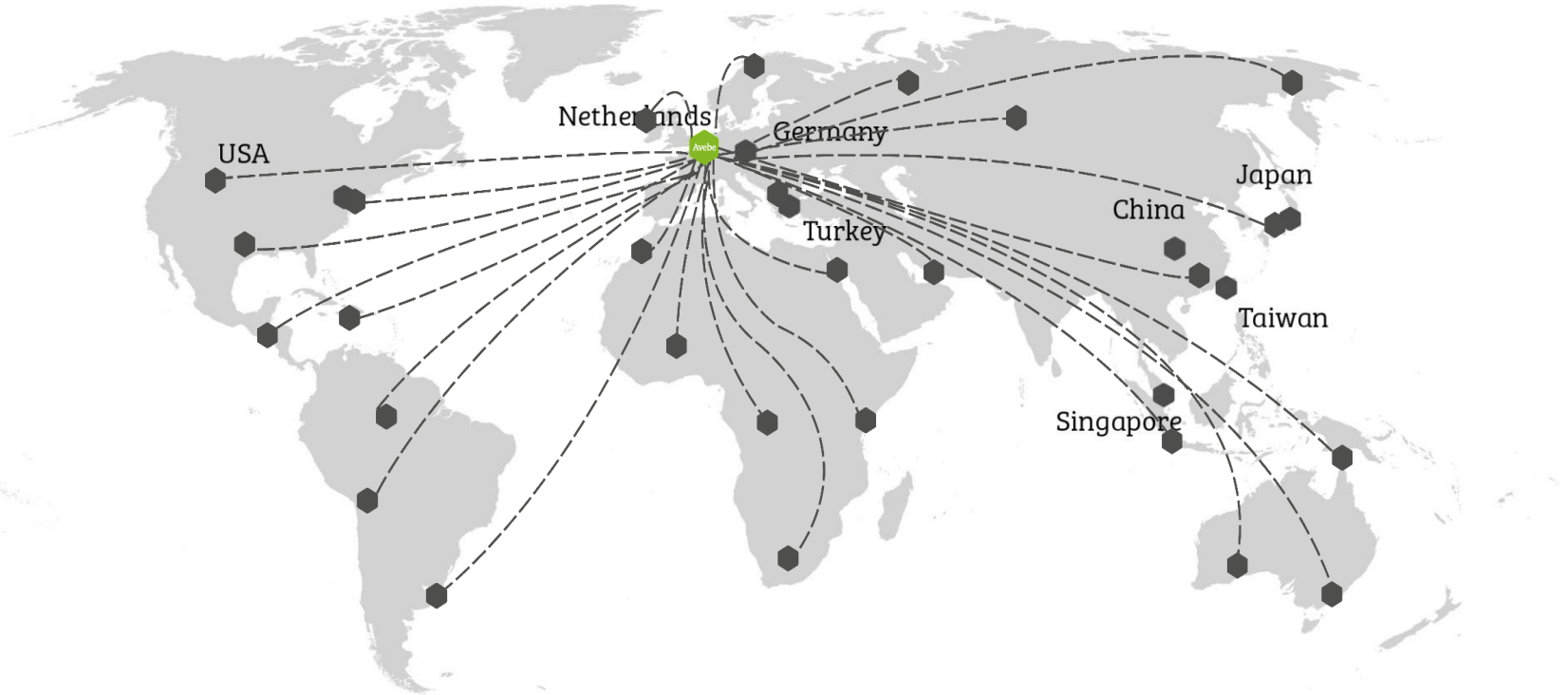


Sales offices



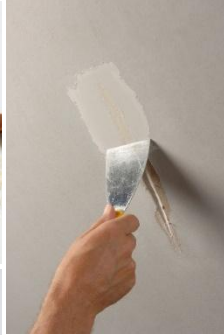


Customers





Major player in the Food industry



Innovation by nature



Business challenge



Starch logistics



Native



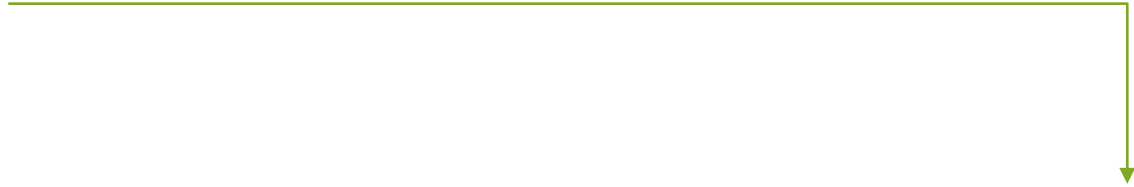
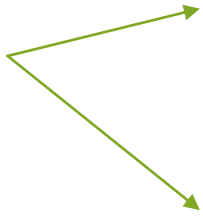
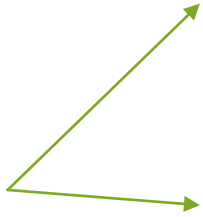
Starch logistics



Native

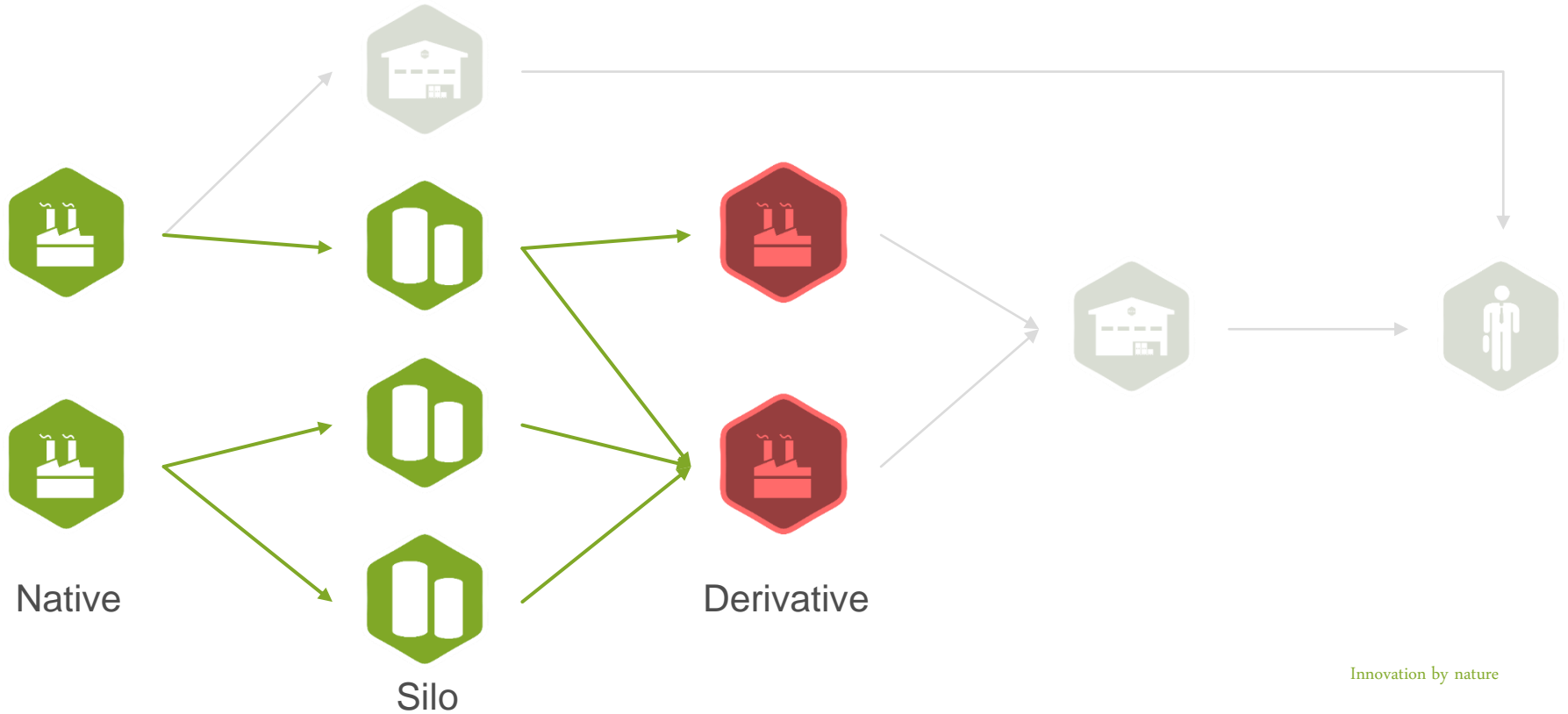


Silo



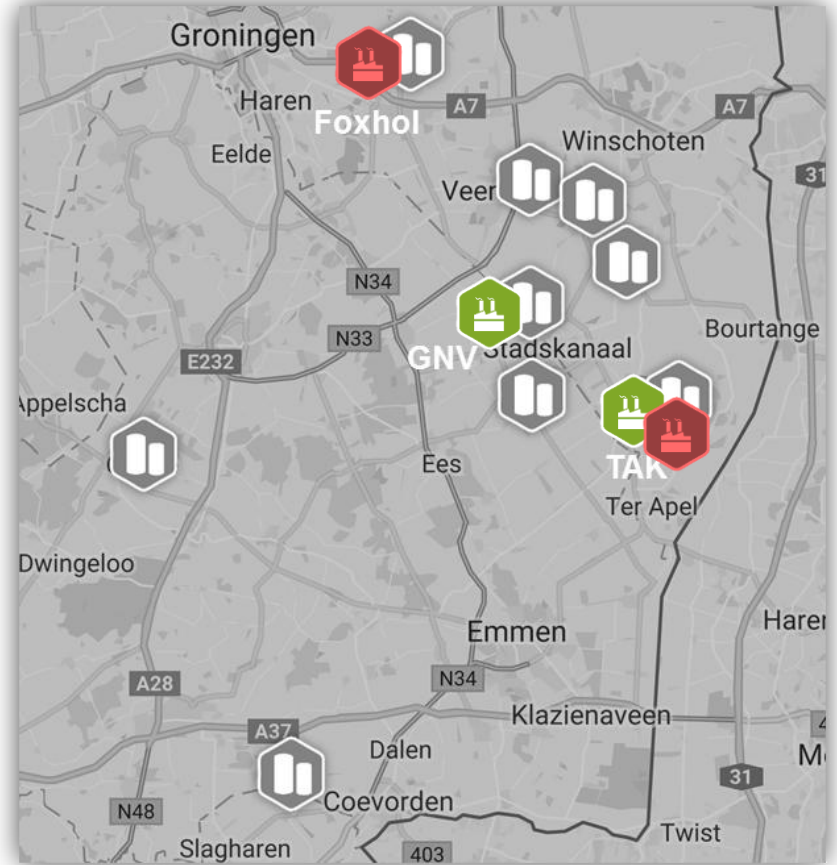


Starch logistics





Starch silo's





Silo planning





Information available for planning



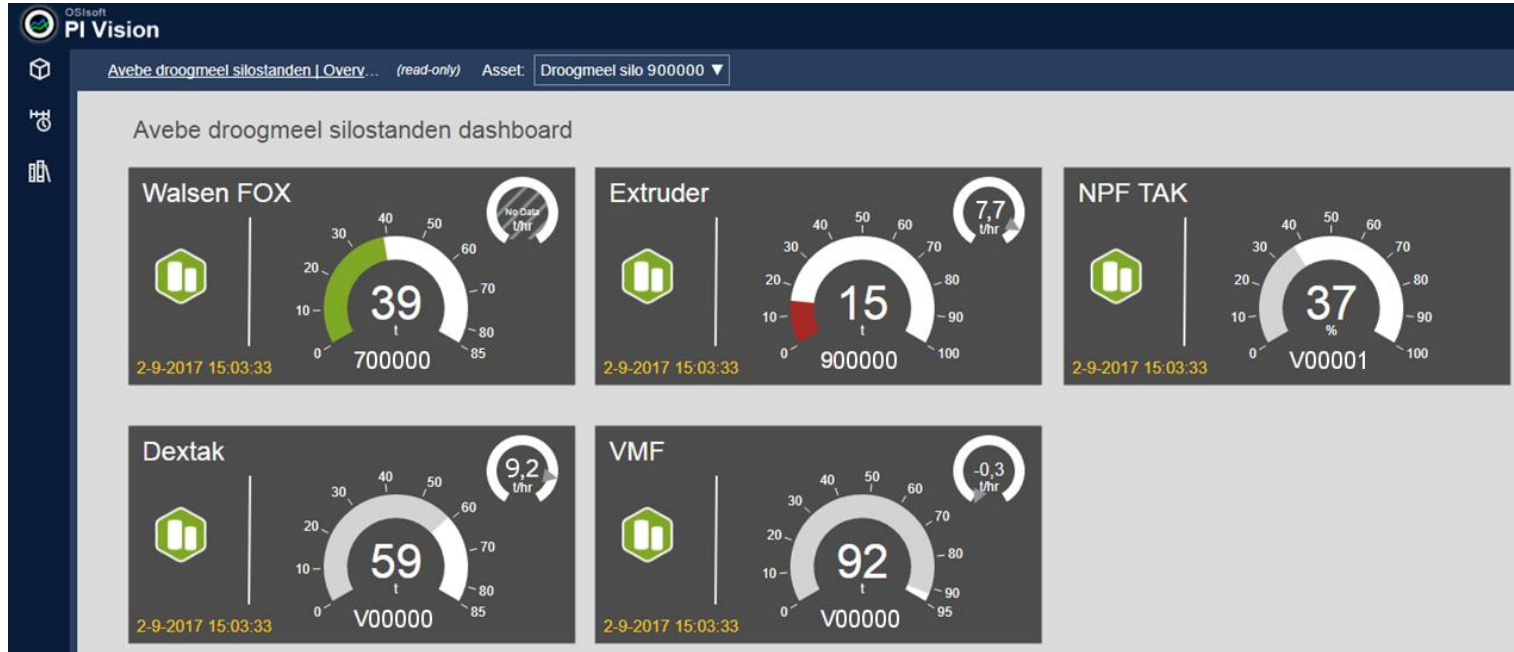
How to optimize silo planning?



Solution with PI System

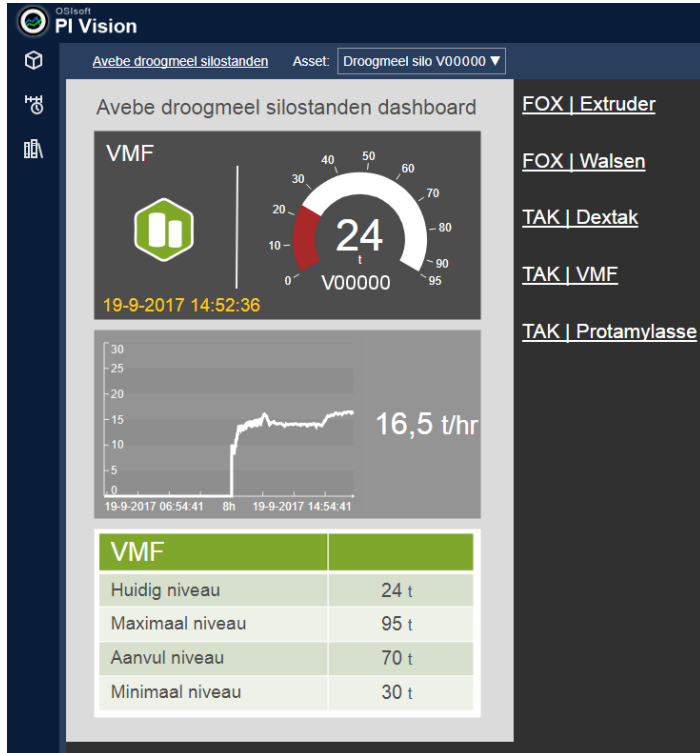


PI Vision dashboard – Overview





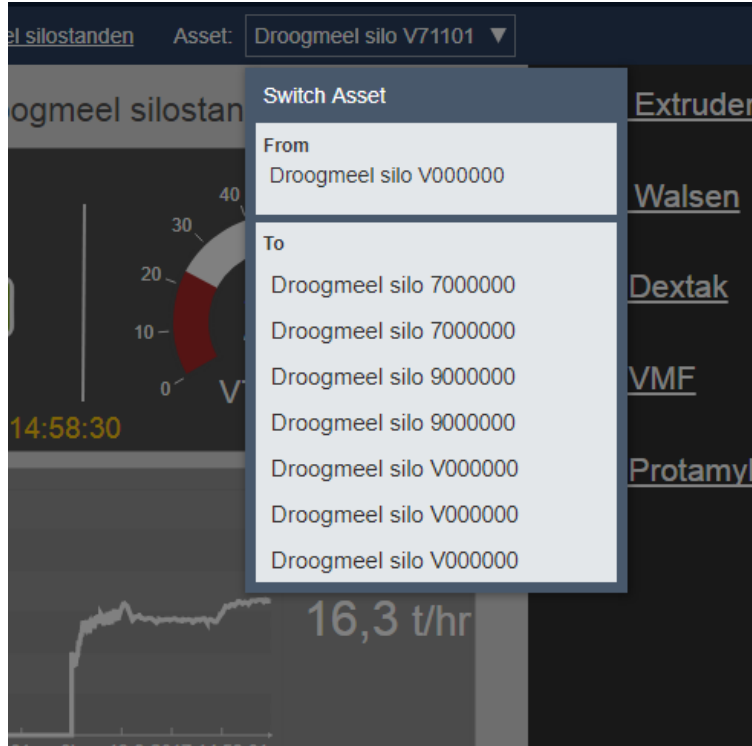
PI Vision dashboard – Detailed view



Detailed view for use on mobile phone



PI Asset Framework



PI Asset Framework used to create the dashboard:

- quickly
- consistent
- easy to adapt



PI Asset Framework – Element template

Dry Starch Tank			
General Attribute Templates Ports Analysis Templates Notification Rule Templates			
Filter			
	Name	Description	Default Value
Category: General Info			
	Plant		
	Silo		
Category: Production capacity			
	Dry starch usage	Current dry starch usage for the production li...	0 t/hr
	Maximum		100 t/hr
	Minimum		0 t/hr
Category: Tank			
	Level		0 t
	Level rounded	Level rounded is to round to the nearest integer	0 t
	Hi		80 t
	Lo		20 t
	Maximum		100 t
	Minimum		0 t

Dry starch tanks are elements based on a template



PI Asset Framework – Element

Elements

- Elements
 - Avebe
 - DE-DAL
 - DE-LUC
 - NL-FOX
 - NL-GNV
 - NL-Silostanden
 - Droogmeel silo 7000000
 - Droogmeel silo 9000000
 - Droogmeel silo V000000
 - Droogmeel silo V000000
 - Protamylasstank V000000
 - NL-TAK
 - NL-Utilities
 - SE-MMO
 - AVEBE-NL
 - AVEOPITNL01 ModuleDB
 - Interfaces
 - System
 - Tests
 - Element Searches

Droogmeel silo 9000000

General Child Elements Attributes Ports Analyses Notification Rules Version

Filter

Name	Value
Category: General Info	
Plant	Extruder
Silo	900000
Category: Production capacity	
Actual production capacity line Extruder (A)	5,511797 t/hr
Actual production capacity line Extruder (B ...)	-0,0002050781 t/hr
Dry starch usage	5,5 t/hr
Maximum	9 t/hr
Minimum	0 t/hr
Category: Tank	
Level	64,33428515625 t
Level rounded	64 t
Hi	70 t
Lo	15 t
Maximum	100 t
Minimum	0 t

**Dry starch usage
determination
depends on
production line**



Business impact

Avebe

Business benefits

“We do not have to call the operators all the time”



Real-time silo dashboard

COMPANY and GOAL

Coöperatie Avebe U.A. is an international Dutch starch and proteins manufacturer, and wanted to reduce the risk of **downtimes** and increase the silo planning **efficiency**



CHALLENGE

The transport company has to make a starch shipment planning such that all factories can continuously operate

- The current sources of information were phone calls with operators and manual readings of silo levels

SOLUTION

A real-time silo dashboard for the planners. The dashboard gives the planners information of the current silo levels of each derivative factory

- The dashboard is developed with PI Vision and makes use of the advantages of the Asset Framework.

RESULTS

Reduction of the risk of downtime due to empty starch silos and more efficient starch shipment planning

- e.g. start cleaning the trucks when all silos are full

Tom Wassink

tom.wassink@avebe.com

IT engineer

Coöperatie Avebe U.A.



Questions

Please wait for the **microphone** before asking your questions

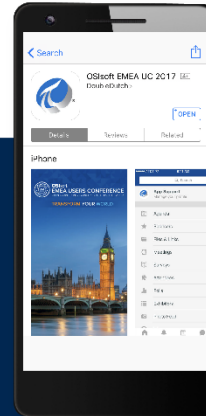


State your **name & company**

Please remember to...

Complete the Online Survey for this session

Download the Conference App



- View the latest agenda and create your own
- Meet and connect with other attendees

Search **OSISOFT** in the app store

Download on the
App Store

GET IT ON
Google Play

HTML

감사합니다

Danke

谢谢

Merci

Gracias

Thank You

ありがとう

Спасибо

Obrigado