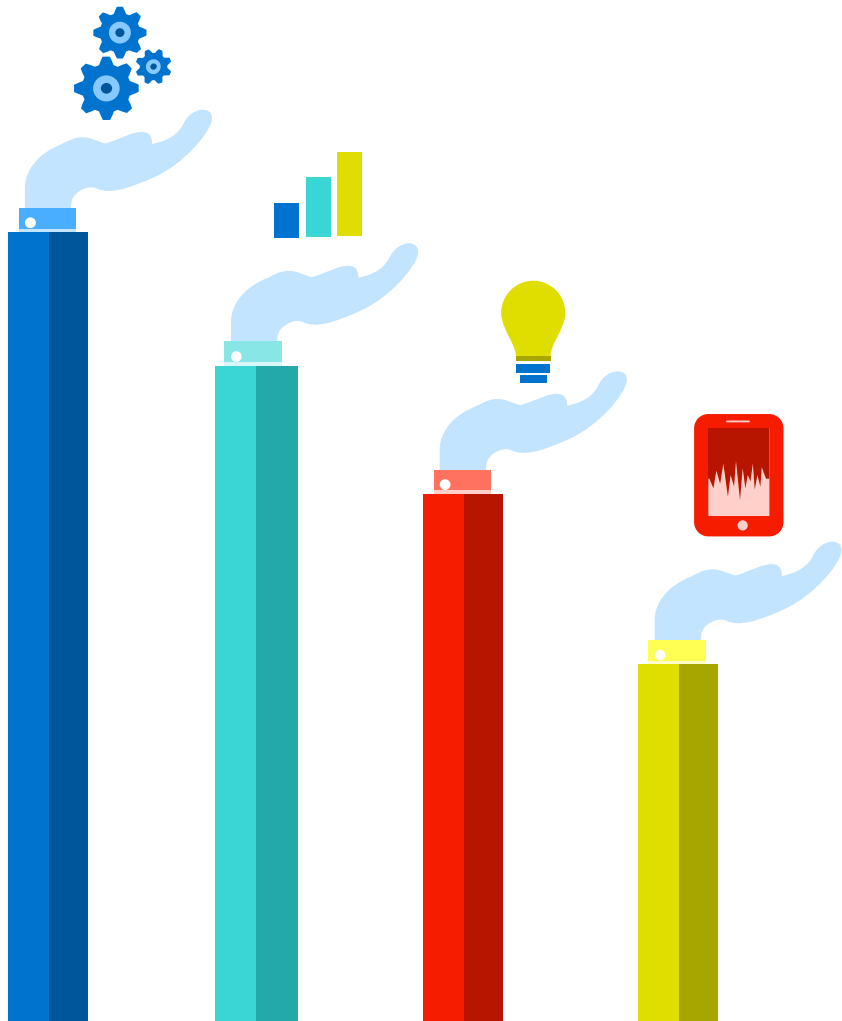


PI System Management Made Easy: From a Single Site to Your Entire Enterprise

Presented by Janelle Minich, Product Manager
Rhonda Clendenon, Group Lead
James Wong, Developer Lead



AGENDA

- Why?
- What is it?
- Demo
- Roadmap
- Future
- How you can get involved

What are customers telling us?



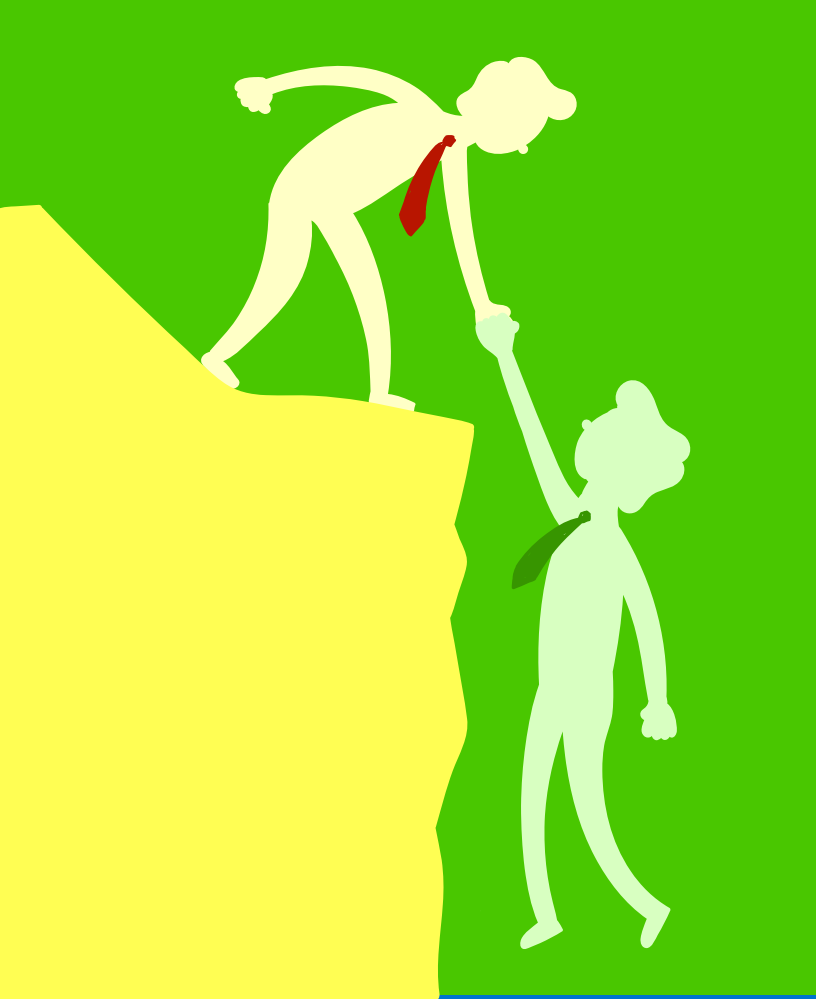


MULTITASKING

Managing the PI System isn't my only job.

I manage a large enterprise PI System with millions of data streams and thousands of users.

I'm busy just keeping the lights on, and struggle with being proactive.



HELP!

I don't know if I have a problem, unless my user calls to complain

I don't know where the problem is

I don't understand the error messages

I don't know how to solve the problem



What if...



PI SYSTEM HEALTH

- Enterprise view of your PI System Health
- Monitors the health of your Data Flow
- Incident reporting
- Offers guidance for troubleshooting
- Automatic generation of displays, notification and analyses
- Subscribe to incident notifications

System Overview

Dashboards

Incidents

System Components

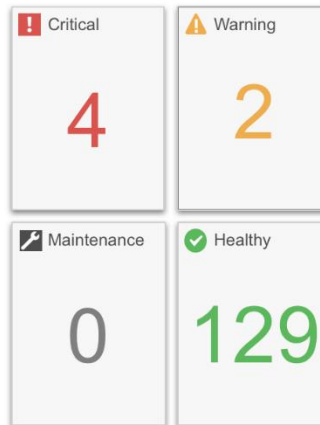
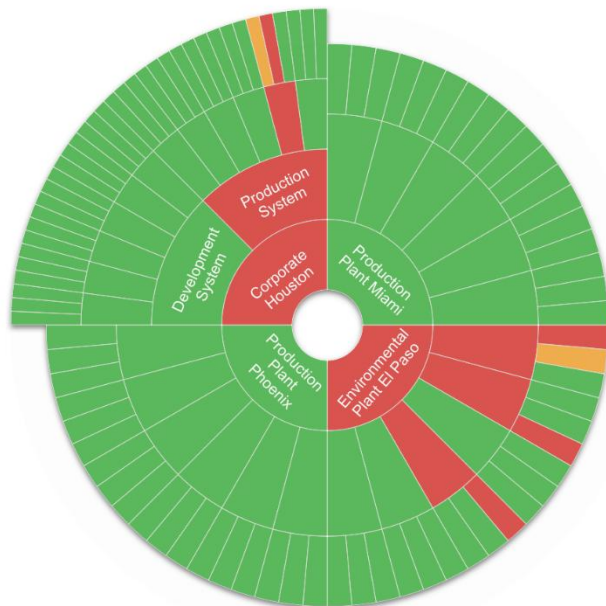
Filter Dashboards



System Overview

6

- ❗ Corporate Houston
- ✅ Production Plant Miami
- ❗ Environmental Plant El Paso
- ✅ Production Plant Phoenix



Production System

Number of Systems

5

Number of Computers

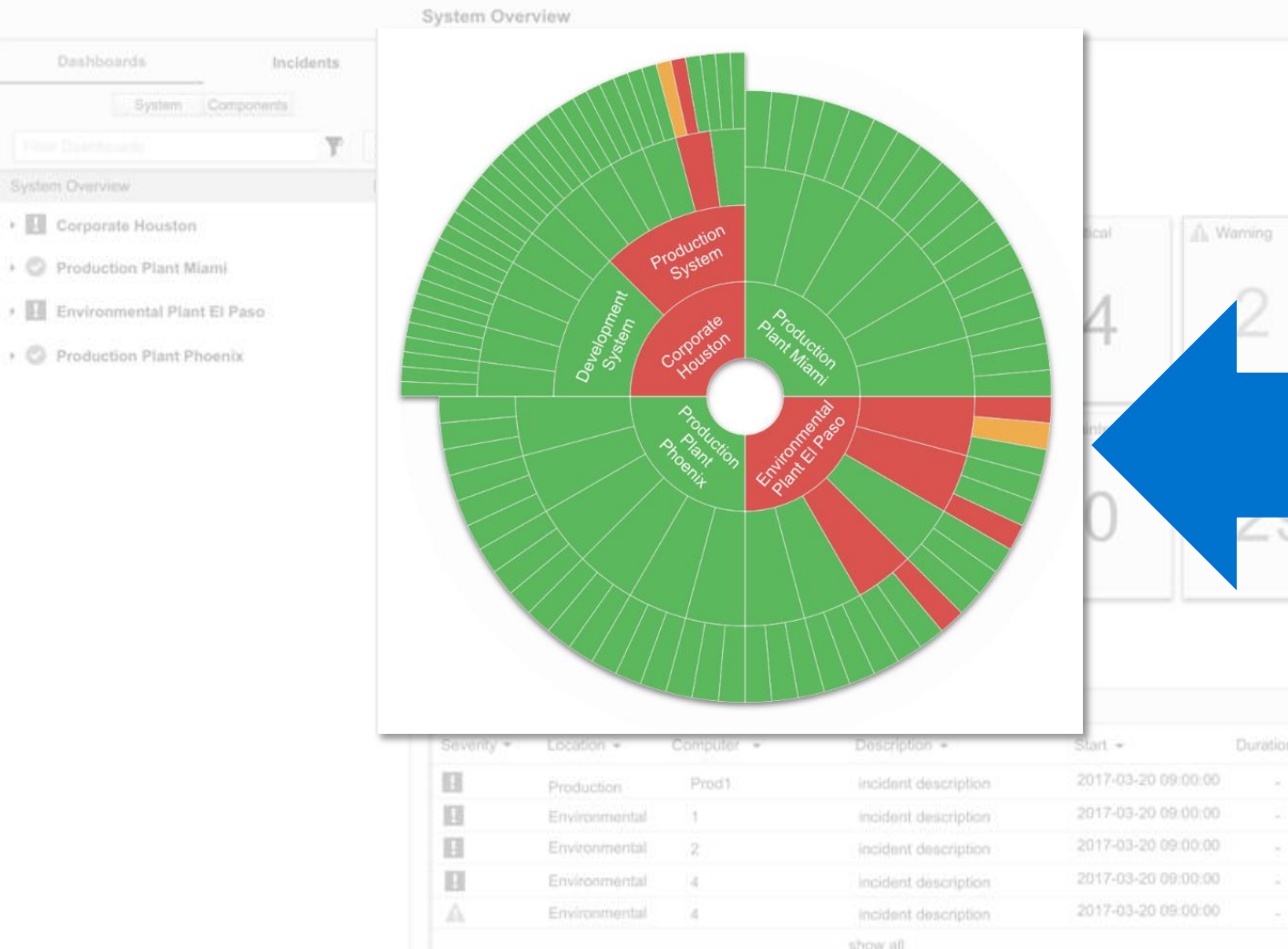
30

Incidents

Severity	Location	Computer	Description	Start	Duration
❗	Production	Prod1	incident description	2017-03-20 09:00:00	-
❗	Environmental	1	incident description	2017-03-20 09:00:00	-
❗	Environmental	2	incident description	2017-03-20 09:00:00	-
❗	Environmental	4	incident description	2017-03-20 09:00:00	-
⚠	Environmental	4	incident description	2017-03-20 09:00:00	-

show all

Drill into the sunburst for more details



- View Health of entire Enterprise from one place
- Drill into problem areas to quickly identify issues and resolve them
- Hierarchy is defined in PI System Directory

System Overview

Dashboards

System Components

Filter Dashboards

System Overview

- Corporate Houston
- Production Plant Miami
- Environmental Plant El Paso
- Production Plant Phoenix


- Count of Critical, Warning, Healthy and Maintenance components
- These counts update as you change your view

 Critical

4

 Warning





2

 Maintenance

0

 Healthy

129

Severity	Location	Computer	Description	Start	Duration
	Production	Prod1	incident description	2017-03-20 09:00:00	-
	Environmental	1	incident description	2017-03-20 09:00:00	-
	Environmental	2	incident description	2017-03-20 09:00:00	-
	Environmental	4	incident description	2017-03-20 09:00:00	-
	Environmental	4	incident description	2017-03-20 09:00:00	-

show all

Drill into the sunburst for more details

System Overview

- View list of recent/active incidents
- View context about the incident
- Drill into incident directly for more details

Incidents

Severity ▾	Location ▾	Computer ▾	Description ▾	Start ▾	Duration ▾
!	Production	Prod1	incident description	2017-03-20 09:00:00	-
!	Environmental	1	incident description	2017-03-20 09:00:00	-
!	Environmental	2	incident description	2017-03-20 09:00:00	-
!	Environmental	4	incident description	2017-03-20 09:00:00	-
!	Environmental	4	incident description	2017-03-20 09:00:00	-

[show all](#)

INCIDENT OVERVIEW

PI System Health

Dashboards

Incidents

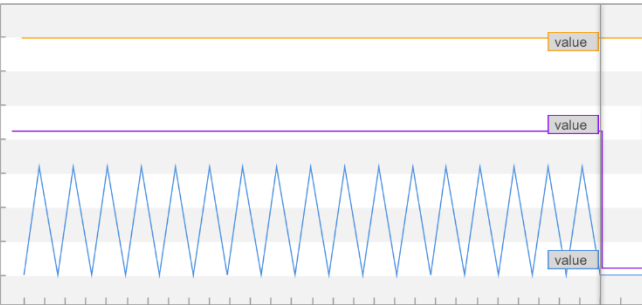
All Incidents

▶ Active Incidents

▼ Recently Viewed Incidents

OPC1 Heartbeat - 2017-03-20 09:00:00 AM

Incident: OPC1 Heartbeat- 2017-03-20 09:00:00 - In Progress



Heartbeat
Scan Class Information
Device Status

Incident Trigger Expression

Start Trigger:
If 'Heartbeat' = PrevVal('Heartbeat',PrevEvent('Heartbeat',''))

Incident Trigger Attributes	start value	end value
Heartbeat	Bad	-
ScanclassInformation	9 5 3 1	-

Incident Event Attributes

start value

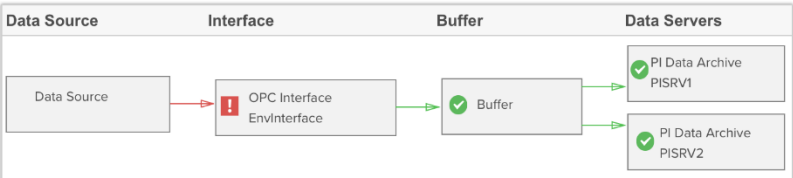
end value

Data Source

Interface

Buffer

Data Servers



```
graph LR; DS[Data Source] --> I[OPC Interface EnvInterface]; I --> B[Buffer]; B --> S1[PI Data Archive PISRV1]; B --> S2[PI Data Archive PISRV2];
```

Details

Subscriptions

Maintenance


✓ Acknowledged by Username

! Critical: The interface heartbeat is in a bad state. This indicates that the interface may be stopped or unable to connect to the data source.

History

This incident has occurred 1 time(s) in the last 24 hours.
Comment for design: If there are previous incidents there would be links to them here.

Comments



Components

OPC Interface
2.6.3.5
Computer
EnvInterface.domain.com
System
Environmental System El Paso

Possible Causes

- The Interface may be in a bad state.
- Check the connection between the interface and the data source for a potential disruption or disconnection.
- One of more scan classes may be over loaded.

Related Resources

Optimize load on the OPC server
[Link to KB00333](#)
Troubleshooting Performance Issues with Uniint Health Tags
[Link to KB01231](#)
Configuring DCOM for OPC Server
[Link to Live Library](#)
If you have questions on how to resolve the incident please contact OSIsoft's Technical Support at: techsupport@osisoft.com or +1 510 297 5828

Export Support Information

Incident: OPC1 Heartbeat- 2017-03-20 09:00:00 - In Progress



Heartbeat
Scan Class Information
Device Status



- Visualize important information

Details

✓ Acknowledged by User

Critical: The interface

This indicates that the

unable to connect to

History

This incident has occurred

hours.

Comment for design: If

there would be links to

Comments

Export Support Information

PI System Health

Incident: OPC1 Heartbeat- 2017-03-20 09:00:00 - In Progress

Dashboards Incidents

All Incidents

Active Incidents

Recently Viewed Incidents

OPC1 Heartbeat - 2017-03-20 09:00:00 AM

Heartbeat

Scan Class Information

Device Status

Details Subscriptions Maintenance

✓ Acknowledged by Username

Critical: The interface heartbeat is in a bad state. This indicates that the interface may be stopped or unable to connect to the data source.

Incident Trigger Expression

Start Trigger:

If 'Heartbeat' = PrevVal('Heartbeat',PrevEvent('Heartbeat', ''))

Incident Trigger Attributes

start value ▼

end value ▼

Heartbeat

Bad

-

ScanclassInformation

9 | 5 | 3 | 1

-

Incident Event Attributes

start value ▼

end value ▼

- View details about the Incident Trigger Expression
- Attributes

History

This incident has occurred 1 time(s) in the last 24 hrs.

Parent for design: If there are previous incidents, you would be links to them here.

Comments

Add New Comment

Components

C Interface

5.5

Computer

Interface domain.com

Item

Environmental System El Paso

Possible Causes

- The Interface may be in a bad state.
- Check the connection between the interface and the data source for a potential disruption or disconnection.
- One of more scan classes may be over loaded.

Related Resources

Optimize load on the OPC server.
[Link to KB00333](#)

Troubleshooting Performance Issues with Unint Health Tags
[Link to KB01231](#)

Configuring DCOM for OPC Server
[Link to Live Library](#)

If you have questions on how to resolve the incident please contact OSIsoft's Technical Support at: techsupport@osisoft.com or +1 510 297 5828

Export Support Information

PI System Health

Incident: OPC1 Heartbeat- 2017-03-20 09:00:00 - In Progress

Dashboards Incidents

All Incidents

- Active Incidents
- Recently Viewed Incidents

OPC1 Heartbeat - 2017-03-20 09:00:00 AM

Heartbeat
Scan Class Information
Device Status

✓ Acknowledged by Username

❗ Critical: The interface heartbeat is in a bad state. This indicates that the interface may be stopped or unable to connect to the data source.

(s) in the last 24

Previous Incidents

Add New Comment

if 'Heartbeat' = PrevVal('Heartbeat',PrevEvent('Heartbeat',''))

Incident Trigger Attributes

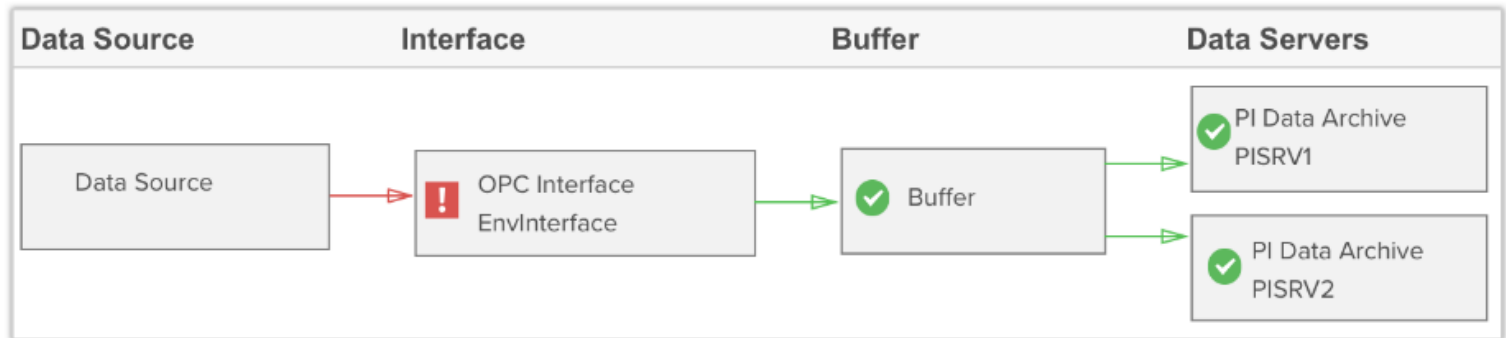
	start value	end value
Heartbeat	Bad	-
ScanClassInformation	9 5 3 1	-

Components

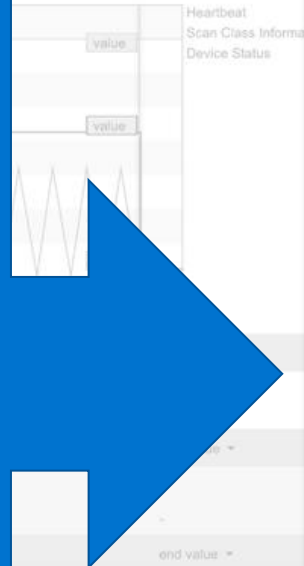
- OPC Interface
2.8.3.5
- Computer
EnvInterface.domain.com
- System
Environmental System El Paso

Possible Causes

- Data Flow Diagram
- Quickly see which component is having the problem



- Incident Description (easy to understand wording)
- History – how many times this has happened
- Users can add comments, attach files



✓ Acknowledged by Username

! Critical: The interface heartbeat is in a bad state. This indicates that the interface may be stopped or unable to connect to the data source.

History

This incident has occurred 1 time(s) in the last 24 hours.

Comment for design: If there are previous incidents there would be links to them here.

Comments



Add New Comment

[Link to KB00333](#)

Troubleshooting Performance Issues with Unint Health

Tags

[Link to KB01231](#)

Configuring DCOM for OPC Server

[Link to Live Library](#)

If you have questions on how to resolve the incident please contact OSIsoft's Technical Support at: techsupport@osisoft.com or +1 510 297 5828

Export Support Information

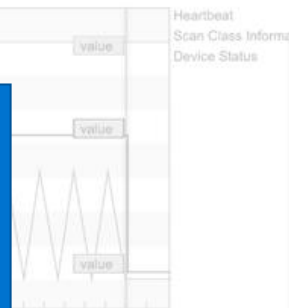
Dashboards | **Incidents**

All Incidents

- Active Incidents
- Recently Viewed Incidents

OPC1 Heartbeat - 2017-03-20 09:00:00 AM

- Context information – Version, Environment
- Possible Causes
- Links to relevant KB articles, online documentation
- Export the right information to OSIsoft Tech Support



Heartbeat
Scan Class Information
Device Status

Details | Subscriptions | Maintenance

✓ Acknowledged by Username

Components

OPC Interface

2.6.3.5

Computer

EnvInterface.domain.com

System

Environmental System El Paso

Possible Causes

- The Interface may be in a bad state.
- Check the connection between the interface and the data source for a potential disruption or disconnection.
- One of more scan classes may be over loaded.

Related Resources

Optimize load on the OPC server

[Link to KB00333](#)

Troubleshooting Performance Issues with Uniint Health Tags

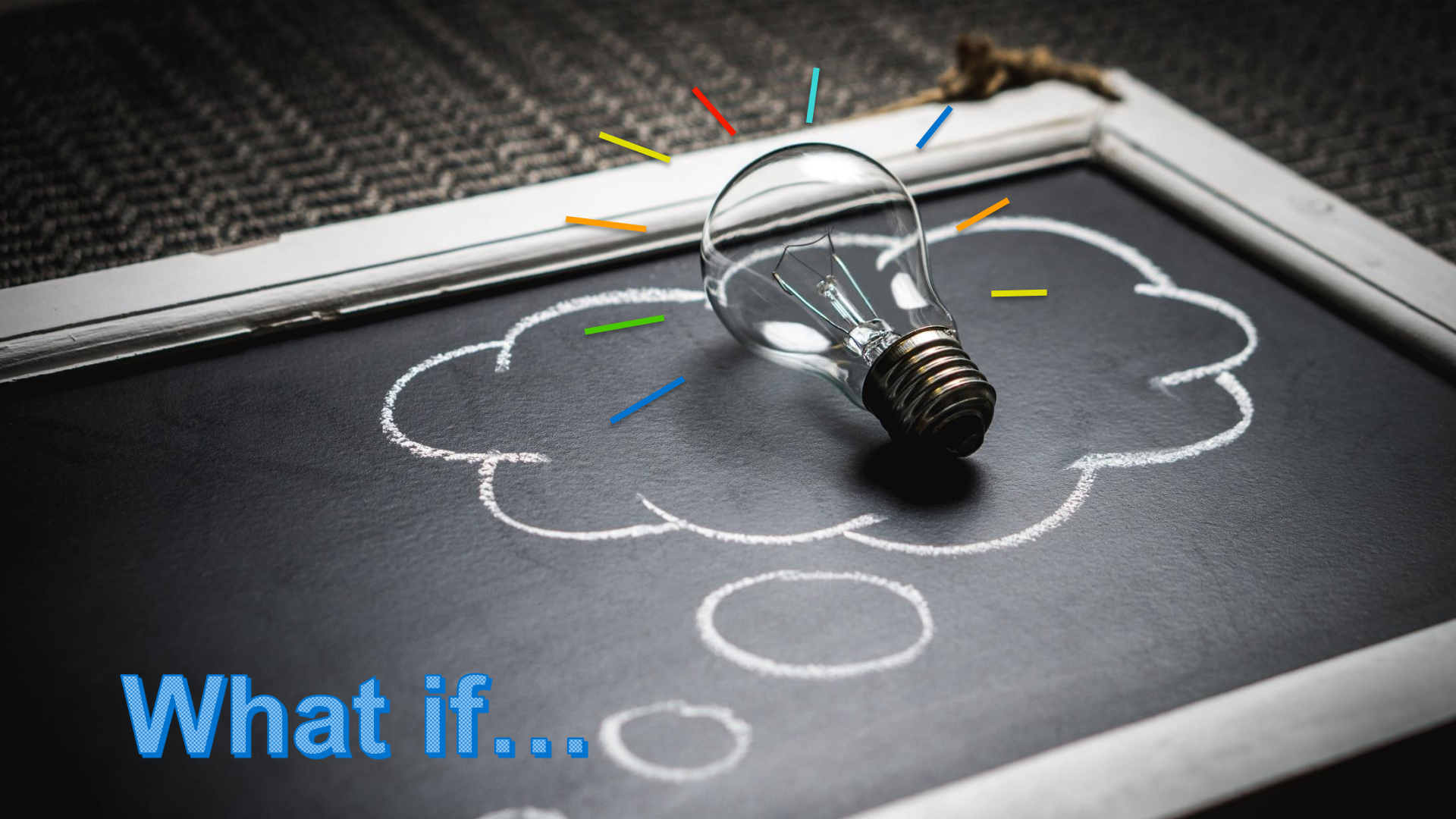
[Link to KB01231](#)

Configuring DCOM for OPC Server

[Link to Live Library](#)

If you have questions on how to resolve the incident please contact OSIsoft's Technical Support at: techsupport@osisoft.com or +1 510 297 5828

Export Support Information



What if...



PI SYSTEM DIRECTORY

- Inventory management
- Upgrade planning
- Informs PI System Health what to monitor

Components

Hierarchy

Components: ▼

Clear All Filters

Filter by Name

Select Types

Select Software

Filter by Version

Filter by Computer

Select Labels

Details

Labeling

Name ▼	Type	Software	Version	Computer	Labels
CorpPI1	PI Data Archive	PI Data Archive 2016 R2	3.4.405.1198	CP905	Corporate
CorpPI2	PI Data Archive	PI Data Archive 2016 R2	3.4.405.1198	CP906	Corporate
CorpPI1	Computer	Windows Server 2012	6.2	CP905	Corporate
CorpPI2	Computer	Windows Server 2012	6.2	CP906	Corporate
HoustonDev-AF	PI AF	PI AF Server 2016 R2	2.8.7759	H505	Houston Plant
HoustonDev-DA	PI Data Archive	PI Data Archive 2016 R2	3.4.405.1198	H505	Houston Plant
HoustonDev	Computer	Windows Server 2012	6.2	H505	Houston Plant
HoustonInterface	Computer	Windows Server 2008	6.0	H907	Houston Plant
HoustonPI-AF	PI AF	PI AF Server 2012	2.5.0	H905	Houston Plant
HoustonPI-DA	PI Data Archive	PI Data Archive 2012 R2	3.4.390.18	H905	Houston Plant
HoustonPI	Computer	Windows Server 2012	6.2	H905	Houston Plant
PI Analysis	Asset Analytics	PI Analysis 2016 R2	2.8.5.7759	CP905	Corporate
PI Buffer	PI Buffer Subsystem	PI Buffer Subsystem	3.4.405.1198	H505	Houston Plant Dev
PI Buffer	PI Buffer Subsystem	PI Buffer Subsystem	3.4.405.1198	H907	Houston Plant
PI Buffer	PI Buffer Subsystem	PI Buffer Subsystem	3.4.405.1198	H905	Houston Plant
PI Buffer	PI Buffer Subsystem	PI Buffer Subsystem	3.4.405.1198	SD123	San Diego Plant
PI Buffer	PI Buffer Subsystem	PI Buffer Subsystem	3.4.405.1198	SD125	San Diego Plant
PI Coresight	PI Vision	PI Coresight 2016 R2	3.1.0.7	CP905	Corporate

CorpPI1

● Name: CP905

● Display As:

Cancel

Save

Notes

Location: Building 7, Room 243
Contact: 24 hr - Bill Washerman

Collected Information

Name

CP905

Type

PI Data Archive 2016 R2

Version

3.4.405.1198

Description

Houston Plant PI Data Archive

PI Data Archive ID

9549e63b-aa59-4201-a654-92834614a110

Network Path

HOUSTONPI.energycompany.int

Open Timeout

1 minute

Components

Hierarchy

Name ▾	Type	Software	Version	Computer
CorpPI1	PI Data Archive	PI Data Archive 2016 R2	3.4.405.1198	CP905
CorpPI2	PI Data Archive	PI Data Archive 2016 R2	3.4.405.1198	CP906
CorpPI1	Computer	Windows Server 2012	6.2	CP905
CorpPI2	Computer	Windows Server 2012	6.2	CP906
HoustonDev-AF	PI AF	PI AF Server 2016 R2	2.8.7759	H505
HoustonDev-DA	PI Data Archive	PI Data Archive 2016 R2	3.4.405.1198	H505
HoustonDev	Computer	Windows Server 2012	6.2	H505
HoustonInterface	Computer	Windows Server 2008	6.0	H907
HoustonPI-AF	PI AF	PI AF Server 2012	2.5.0	H905
HoustonPI-DA	PI Data Archive	PI Data Archive 2012 R2	3.4.390.18	H905
HoustonPI	Computer	Windows Server 2012	6.2	H905
PI Analysis	Asset Analytics	PI Analysis 2016 R2	2.8.5.7759	CP905
PI Buffer	PI Buffer Subsystem	PI Buffer Subsystem	3.4.405.1198	H505
PI Buffer	PI Buffer Subsystem	PI Buffer Subsystem	3.4.405.1198	H907
PI Buffer	PI Buffer Subsystem	PI Buffer Subsystem	3.4.405.1198	H905
PI Buffer	PI Buffer Subsystem	PI Buffer Subsystem	3.4.405.1198	SD123
PI Buffer	PI Buffer Subsystem	PI Buffer Subsystem	3.4.405.1198	SD125
PI Corosight	PI Vision	PI Corosight 2016 R2	3.1.0.7	CP905

- Automatically detect the PI Software running in your Enterprise
- Build an inventory so you can better manage your PI System

Components

Hierarchy

Components: Default

Clear All Filters

Filter by Name

Select Types

Select Software

Filter by Version

Filter by Computer

Select Labels

CorpPI1	PI Data Archive	PI Data Archive 2016 R2	3.4.405.1198	CP905	Corporate
CorpPI2	PI Data Archive	PI Data Archive 2016 R2	3.4.405	CP906	Corporate
CorpPI1	Computer	Windows Server 2012	6.2	CP905	Corporate
CorpPI2	Computer	Windows Server 2012	6.2	CP906	Corporate
HoustonDev-AF	PI Data Archive	PI Data Archive 2016 R2	3.4.405.1198	CP905	Corporate
HoustonDev-DA	PI Data Archive	PI Data Archive 2016 R2	3.4.405.1198	CP906	Corporate
HoustonDev	Computer	Windows Server 2012	6.2	CP905	Corporate
HoustonInterface	Computer	Windows Server 2012	6.2	CP906	Corporate
HoustonPI-AF	PI Data Archive	PI Data Archive 2016 R2	3.4.405.1198	CP905	Corporate
HoustonPI-DA	PI Data Archive	PI Data Archive 2016 R2	3.4.405.1198	CP906	Corporate
HoustonPI	Computer	Windows Server 2012	6.2	CP905	Corporate
PI Analysis	Assessment	Assessment 2016 R2	3.4.405.1198	CP905	Corporate
PI Buffer	PI Buffer Subsystem	PI Buffer Subsystem	3.4.405.1198	H505	Houston Plant Dev
PI Buffer	PI Buffer Subsystem	PI Buffer Subsystem	3.4.405.1198	H907	Houston Plant
PI Buffer	PI Buffer Subsystem	PI Buffer Subsystem	3.4.405.1198	H905	Houston Plant
PI Buffer	PI Buffer Subsystem	PI Buffer Subsystem	3.4.405.1198	SD123	San Diego Plant
PI Buffer	PI Buffer Subsystem	PI Buffer Subsystem	3.4.405.1198	SD125	San Diego Plant
PI Corrosion	PI Corrosion	PI Corrosion 2016 R2	3.1.0.7	CP905	Corporate

- Use Filters to easily find the information you are looking for
- Filter by Name, Type, Software, Version, Computer and/or User-applied Labels

CorpPI1

Name: CP905

Display As: CorpPI1

Cancel

Save

Notes

Location: Building 7, Room 243
Contact: 24 hr - Bill Washerman

Collected Information

Name

CP905

Type

PI Data Archive 2016 R2

Version

3.4.405.1198

Description

Houston Plant PI Data Archive

PI Data Archive ID

9549e63b-aa59-4201-a654-92834614a110

Network Path

HOUSTONPIenergycompany.int

Open Timeout

1 minute

Components

Hierarchy

Components: Default ▾

Filter by Name

Select Types

Select Software

Select Computer

Select Labels

Name ▾	Type	Software	Labels
CorpPI1	PI Data Archive	PI Data Archive	Corporate
CorpPI2	PI Data Archive	PI Data Archive	Corporate
CorpPI1	Computer	Windows Server	Corporate
CorpPI2	Computer	Windows Server	Corporate
HoustonDev-AF	PI AF	PI AF Server 2016 R2	Plant
HoustonDev-DA	PI Data Archive	PI Data Archive	Plant
HoustonDev	Computer	Windows Server	Plant
HoustonInterface	Computer	Windows Server	Plant
HoustonPI-AF	PI AF	PI AF Server 2016 R2	Plant
HoustonPI-DA	PI Data Archive	PI Data Archive	Plant
HoustonPI	Computer	Windows Server	Plant
PI Analysis	Asset Analytics	PI Analysis 2016 R2	Corporate
PI Buffer	PI Buffer Subsystem	PI Buffer Subsystem	Houston Plant
PI Buffer	PI Buffer Subsystem	PI Buffer Subsystem	Houston Plant
PI Buffer	PI Buffer Subsystem	PI Buffer Subsystem	Houston Plant
PI Buffer	PI Buffer Subsystem	PI Buffer Subsystem	Houston Plant
PI Buffer	PI Buffer Subsystem	PI Buffer Subsystem	San Diego Plant
PI Buffer	PI Buffer Subsystem	PI Buffer Subsystem	San Diego Plant
PI Corosynth	PI Vision	PI Corosynth 2016 R2	Corporate

- Support for “Friendly Name” of computers
- Display additional information collected about the computers and OS/soft components

Joe Admin

0

?



Details

Labeling

CorpPI1

☐ Name: CP905☒ Display As: CorpPI1

Cancel

Save

Notes



Location: Building 7, Room 243
Contact: 24 hr - Bill Washerman

Collected Information

Name

CP905

Type

PI Data Archive 2016 R2

Version

3.4.405.1198

Open Timeout
1 minute

System Overview

Dashboards

Incidents

System Components

Filter Dashboards

System Overview

Corporate Houston

Production Plant Miami

Environmental Plant

Production Plant Pho



Critical

4

Warning

2

Production System

Number of Systems

5

Number of Computers

30

Demo

Incidents

Severity	Location	Computer	Description	Start	Duration
Critical	Production	Prod1	incident description	2017-03-20 09:00:00	-
Critical	Environmental	1	incident description	2017-03-20 09:00:00	-
Critical	Environmental	2	incident description	2017-03-20 09:00:00	-
Critical	Environmental	4	incident description	2017-03-20 09:00:00	-
Warning	Environmental	4	incident description	2017-03-20 09:00:00	-

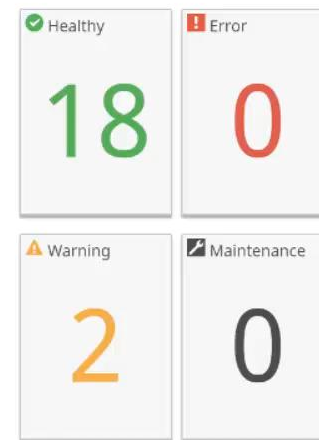
[show all](#)

Drill into the sunburst for more details

Filter Names	Filter Items	Filter Software	Filter Versions	Filter Computers	Filter Labels
Name	Item	Software	Version	Computer	Labels
THEROOFISONFIRE					
THEROOFISONFIRE	Computer	Microsoft Windows Server 2008 R2 Enterprise Service Pack 1	6.1.7601.65536	THEROOFISONFIRE	
TheRoofsOnFire	PI Data Archive	PI Data Archive 2016 R2	3.4.405.1198	THEROOFISONFIRE	
PIPerfMon	Interface	PI Interface for Performance Monitor (PIPerfMon)	2.1.0.88	THEROOFISONFIRE	
PIPing	Interface	PI Ping (PIPing) Interface	2.0.0.20	THEROOFISONFIRE	
PISNMP	Interface	PI SNMP (PISNMP) Interface	1.5.1.306	THEROOFISONFIRE	
TCPResponse	Interface	PI TCPResponse (TCPResponse) Interface	1.1.6.0	THEROOFISONFIRE	
PI Connector for PI System Health	Connector	PI Connector for PI System Health	1.0.1.13	THEROOFISONFIRE	
PI Buffer Subsystem	PI Buffer Subsystem	PI Buffer Subsystem	4.7.0.25	THEROOFISONFIRE	
PI Directory Publisher	PI System Directory - Publisher	PI System Directory Publisher 2017 R2	1.0.0.885	THEROOFISONFIRE	
AFNCNS					
AFNCNS	Computer	Microsoft Windows Server 2008 R2 Enterprise Service Pack 1	6.1.7601.65536	AFNCNS	
AFNCNS	PI AF	PI AF Server 2017 R2	2.9.5.8249	AFNCNS	
AFNCNS	PI Data Archive	PI Data Archive 2016	3.4.400.1162	AFNCNS	
PIPerfMon	Interface	PI Interface for Performance Monitor (PIPerfMon)	2.1.0.88	AFNCNS	
PIPing	Interface	PI Ping (PIPing) Interface	2.0.0.20	AFNCNS	
PISNMP	Interface	PI SNMP (PISNMP) Interface	1.5.1.306	AFNCNS	
TCPResponse	Interface	PI TCPResponse (TCPResponse) Interface	1.1.6.0	AFNCNS	
PI Buffer Subsystem	PI Buffer Subsystem	PI Buffer Subsystem	4.7.0.26	AFNCNS	
PI Directory Publisher	PI System Directory - Publisher	PI System Directory Publisher 2017 R2	1.0.0.917	AFNCNS	
JCUPGRADE85					
JCUPGRADE85	Computer	Microsoft Windows Server 2012 R2 Standard	6.2.9200.0	JCUPGRADE85	
JCUPGRADE85	PI AF	PI AF Server 2017 R2	2.9.5.8227	JCUPGRADE85	
PI Buffer Subsystem	PI Buffer Subsystem	PI Buffer Subsystem	4.7.0.26	JCUPGRADE85	
PI Directory Publisher	PI System Directory - Publisher	PI System Directory Publisher 2017 R2	1.0.0.810	JCUPGRADE85	

Corporate

Corporate



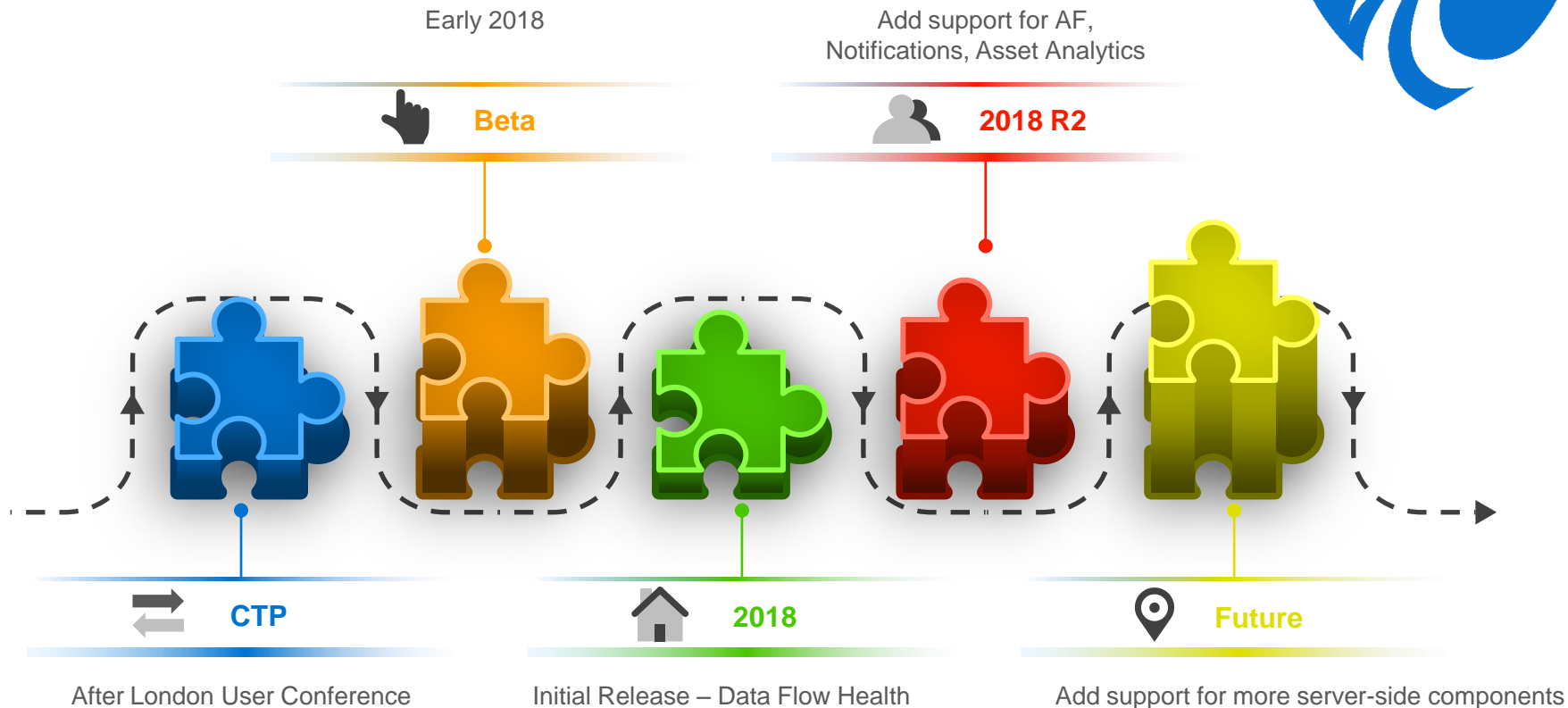
Severity

11:16 AM
10/15/2017

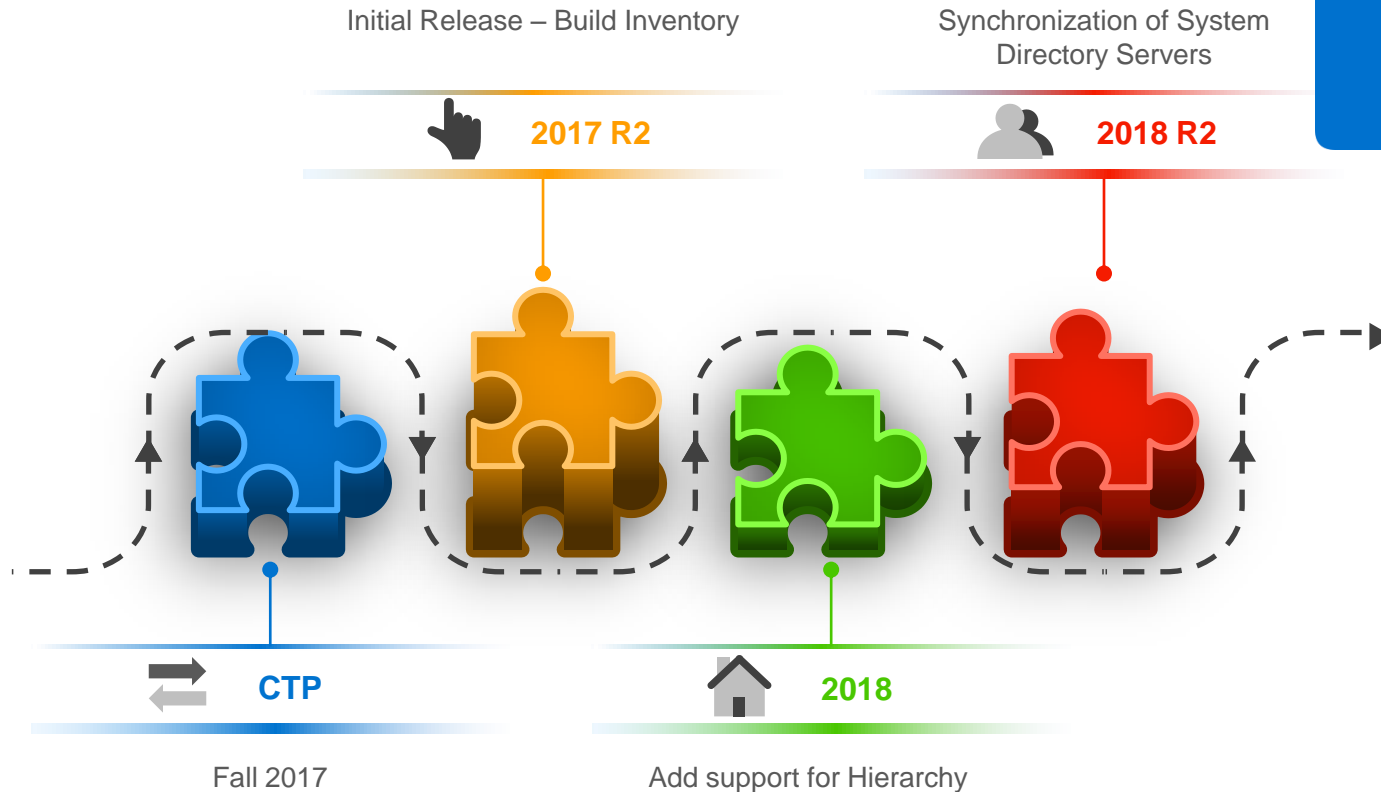


Roadmap

PI System Health Roadmap



PI System Directory Roadmap





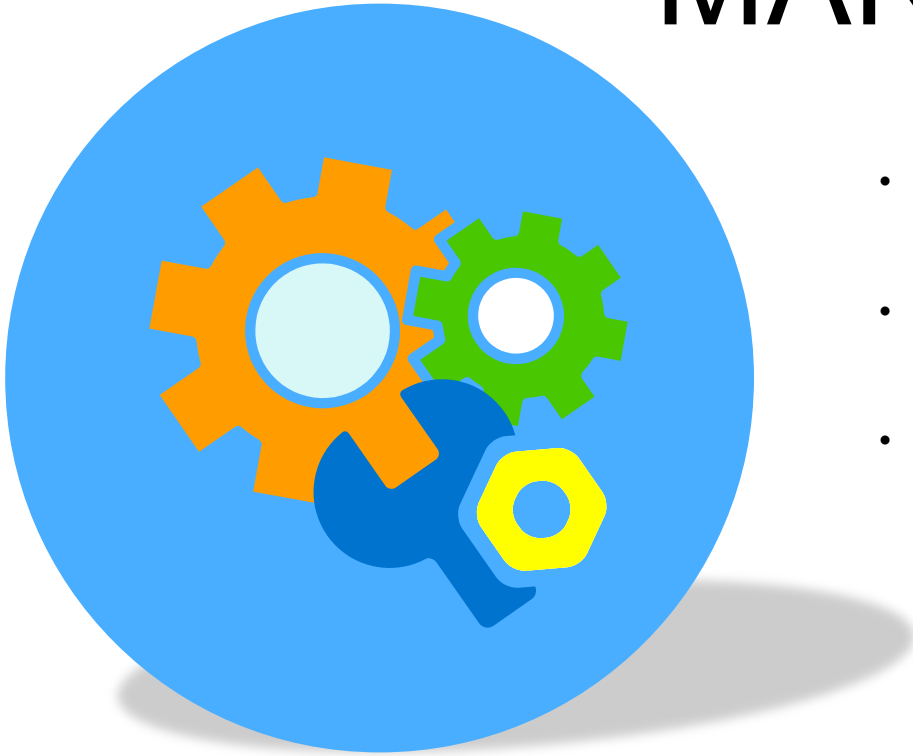
LICENSING

- Every customer will get PI System Health
- Included with the PI Server License
 - Customers responsible for licensing of PI Tags
- Future:
 - Add-on subscription services
 - Additional charge for these



Looking Ahead

MANAGEABILITY



- Centralized Management, Administration and Configuration of your PI Servers
- PI System Health, PI System Directory will be part of this
- In research now



How you can get involved



PI System Health & PI System Directory

- Come to the Booth
- Sign up for the Beta
- Let us know what you think!



PI System Manageability

- Contact Janelle Minich or Tom LeBay if you want to provide feedback and participate in our research effort
- janelle@osisoft.com
- tlebay@osisoft.com

Janelle Minich

janelle@osisoft.com

Product Manager

OSIsoft, LLC.



Rhonda Clendenon

rcclendenon@osisoft.com

Group Lead

OSIsoft, LLC.



James Wong

jwong@osisoft.com

Developer Lead

OSIsoft, LLC.



Questions

Please wait for the **microphone** before asking your questions



State your **name & company**

Please remember to...

Complete the Online Survey for this session



감사합니다

Danke

谢谢

Merci

Gracias

Thank You

ありがとう

Спасибо

Obrigado