



# Getting IoT-Ready with the PI System

Presented by Enrique Herrera  
Market Principal – Connected Services



“Connecting people with sensor based data in ways that were physically or economically unrealistic before”



1.5B data steams  
35+ years  
65% of Industrial Fortune 500

# OSIsoft Industrial IoT Strategy

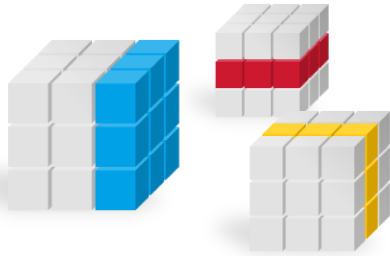
Enabling Advanced Analytics

Pervasive Sensor Data Collection

Partner EcoSphere

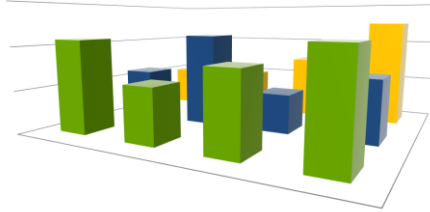
# Ways to get value from (big) data with Advanced Analytics

## Data Warehouses



*Centralizing data  
from different  
business systems*

## Visual Correlations



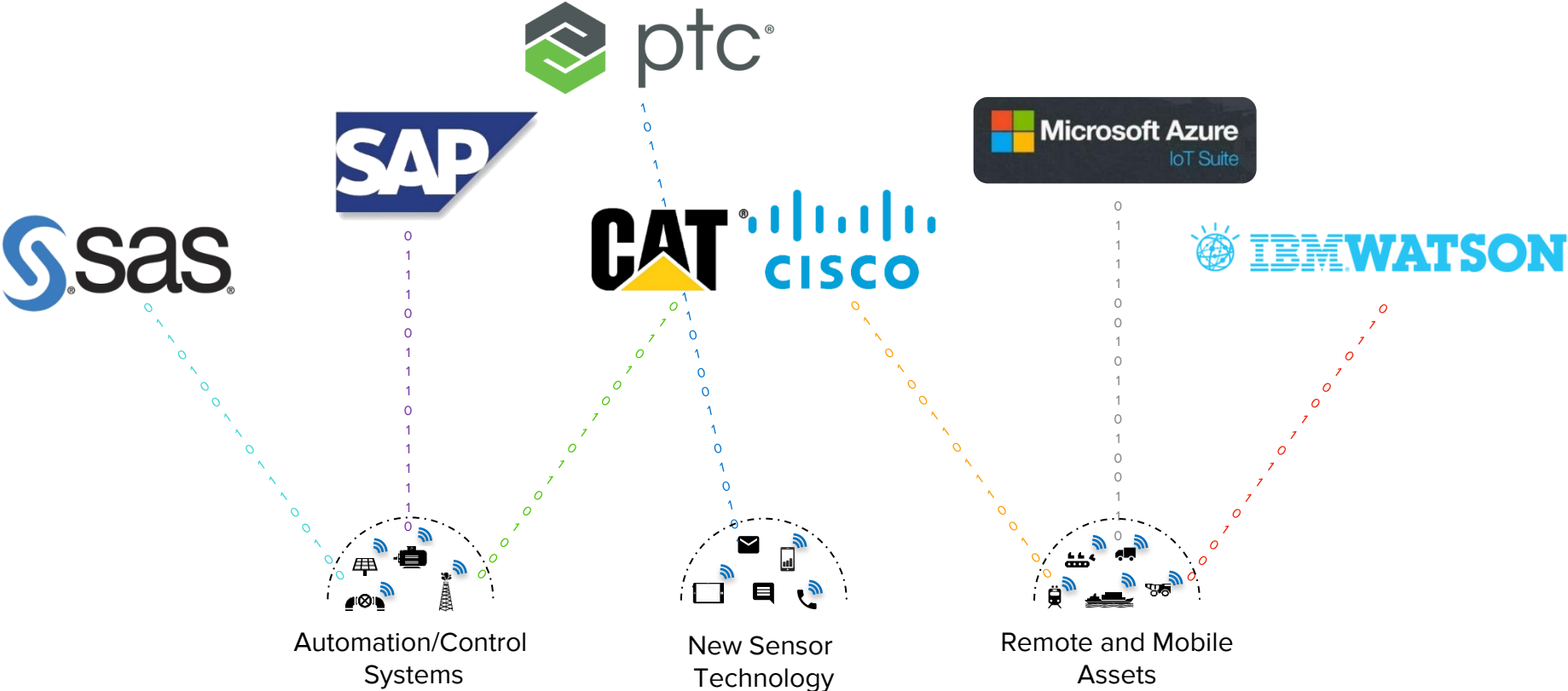
*Visualizing data sets  
across multiple  
variables*

## Data Science

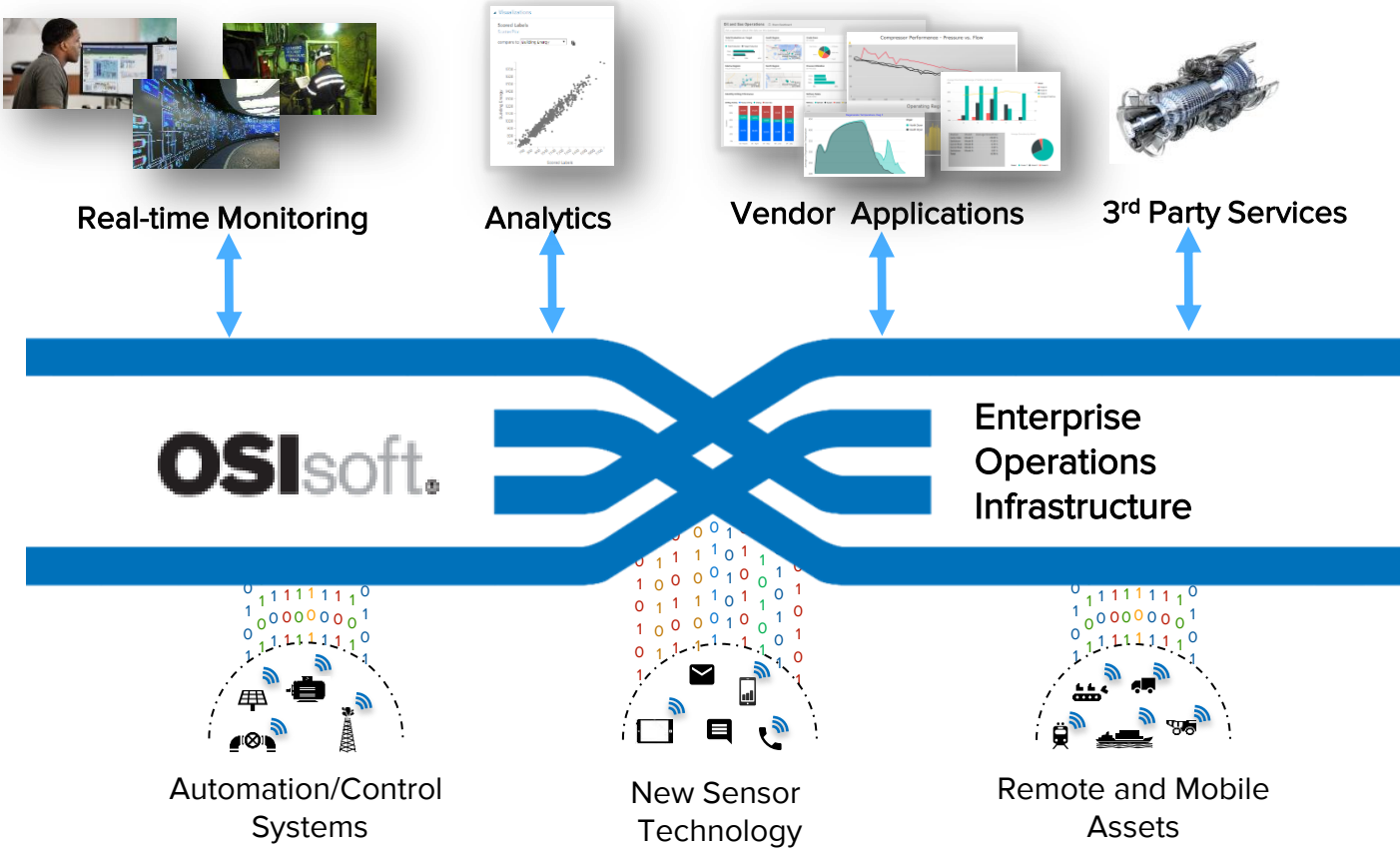


*Identifying patterns  
with statistical  
approaches*

# IoT is Driving Innovation Across the Industrial World



# OSIsoft Infrastructure is Source of Truth for IoT Analytics



# Now connect what was not possible before



... Remote and mobile assets

# Add Sensors without Upgrading Legacy Systems

*Legacy upgrades are expensive!*



Propriety technology, sold by a single vendor



Hard to find replacement parts for old systems



Adding hardwired I/O is difficult



# Now connect what was not possible before



Powered by new hardware. Ex: edge gateways running intel processors





# Connecting the Unconnected



Presented by Dave Roberts – [dave@senseops.com](mailto:dave@senseops.com)  
CEO/Founder @sense\_ops



**SENSEOPS**™

# UNDERLYING MAGIC – THE SENSEOPS SOLUTION



SENSEOPS™

- **Consult:** Define appropriate COTS Sensor & I/O pattern for the Use Case
- **Mobilize:** Procure/Construct and Deploy Use-Case Specific IoT “Kit” (sensors, I/O, Gateway)
- **Run:** SenseOps proprietary software to acquire, store, and analyze data “at the edge”
- **Interconnect:** Leverage existing managed networks, or deploy purpose built M2M network
- **Fleet Scale:** Aggregate cloud-appropriate data for fleet analytics and integration with other cloud apps

Ad-Hoc Sensors



Control Systems



ADVANTECH

NETSCOUT

CISCO

DELL

Packaged with COTS Hardware



INTEL

Multi-Platform Support



Analytics



Visualize



Archive



Patterns



Event Notify

Operating “On the Edge”

SenseOps Software



M2M Purpose Built



Wireless Connectivity



Microsoft Azure



esri

ELEMENT ANALYTICS™



falkonry

SAP HANA

Cloud Integrators

Fleet Wide Platform



# Example customer – Mueller Brown Milling



SENSEOPS™

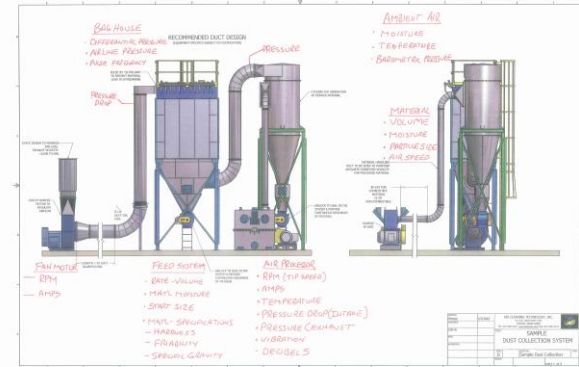
- \$400k Milling Machine with 33% Energy Efficiency over mechanical milling (e.g. ball mill)
- End-Use Customers asked Vortex for Lease Structure
  - \$20,000/Month but Vortex took Operating Risk
- Vortex Offers Customers Material Type Throughput per Month Contract
  - Results in \$38-40k Month in Revenue per machine to Vortex



9min  
Video  
With  
CEO

## SenseOps Approach

- “Mobilization Fee” to implement SenseOps “Kit” at 1<sup>st</sup> Site
- Subscription per machine/month SaaS Recurring Revenue to SenseOps – 3 year contract
- Reduced/Amortized “Mobilization Fee” on future machines (per Kit install)
- Customer forecasting 16 installs in 2017





# Example customer – Royal Star Sportfishing



SENSEOPS™

- \$2-3M Vessel - \$250k Prime Movers
- 1000 Miles from Port 10-15 days at Sea
- 24 Passengers paying \$500/day to be on board
- “Product” is A-1 Sushi Grade Yellowfin Tuna – happy passengers come home with 500-1000lbs

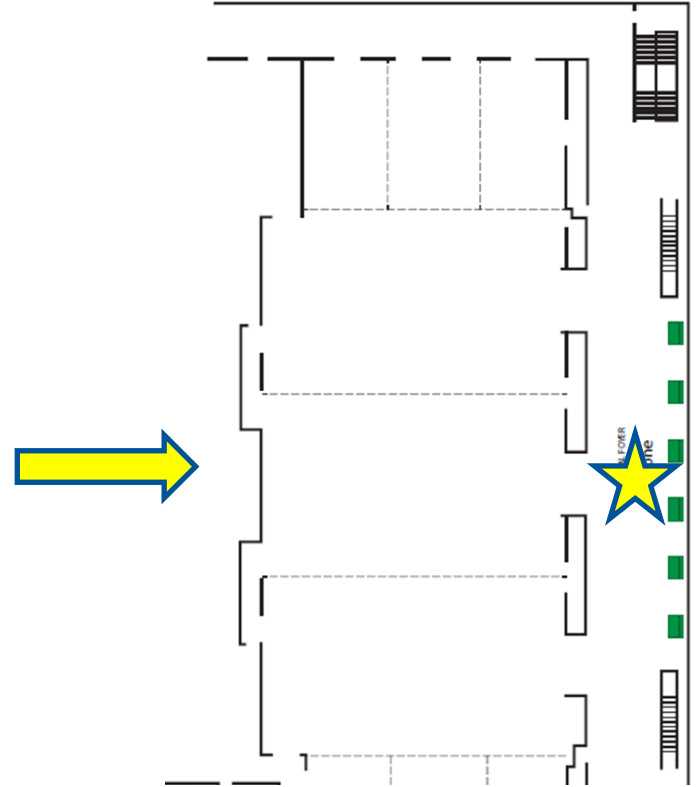


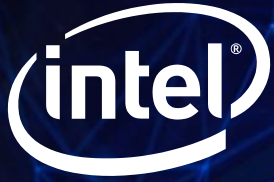
## SenseOps Approach

- CanBUS interface to engine/generator controllers
- Pressure, Temp, Flow Sensors
- Current Transducers
- Real-time Dashboard on Bridge
- Fleetwide NOC



**Thank You!!!**  
**Come See us in IOT Zone Booth #4**  
**Continental Foyer**





# THE TRANSFORMATION TO A Smart and connected world

Thierry Godart, Ph.D.  
General Manager – Energy Solutions  
Intel Internet of Things Group  
[thierry.godart@intel.com](mailto:thierry.godart@intel.com)

# Legal Notices & Disclaimer

Intel technologies' features and benefits depend on system configuration and may require enabled hardware, software or service activation. Performance varies depending on system configuration. No computer system can be absolutely secure. Check with your system manufacturer or retailer or learn more at [intel.com](http://intel.com).

Intel, the Intel logo, Intel Atom, Intel Core, Intel. Experience What's Inside, the Intel. Experience What's Inside logo, Intel RealSense, Quark and Xeon are trademarks of Intel Corporation in the U.S. and/or other countries.

\*Other names and brands may be claimed as the property of others.

© 2017 Intel Corporation.



# IoT for Vertical Markets

## TSD



Software Defined  
Cockpit



Connected  
Transportation &  
Logistics

## IESD



Manufacturing



Energy



Building

## RSD



Transactional  
Retail



Visual Retail



Retail Analytics

## MCA



Video



Lighting



Health



Public  
Sector



Smart  
Cities



Smart  
Home

# Monitoring smart infrastructure

Intel / OSIssoft partnership

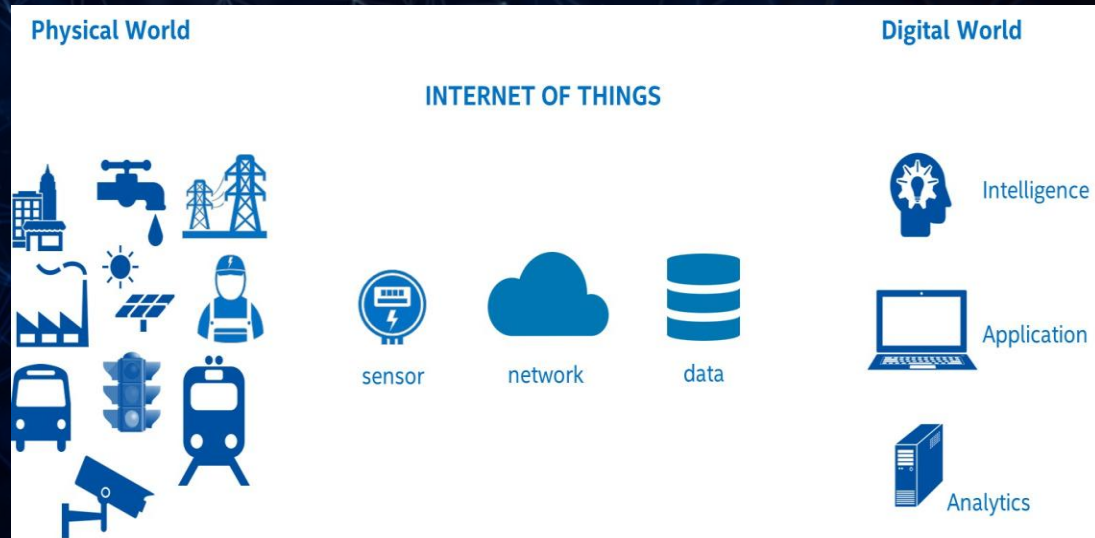
Two Fundamental Architectures: Distributed and Centralized  
Reference design + Universal data collection

## Distributed Edge Compute

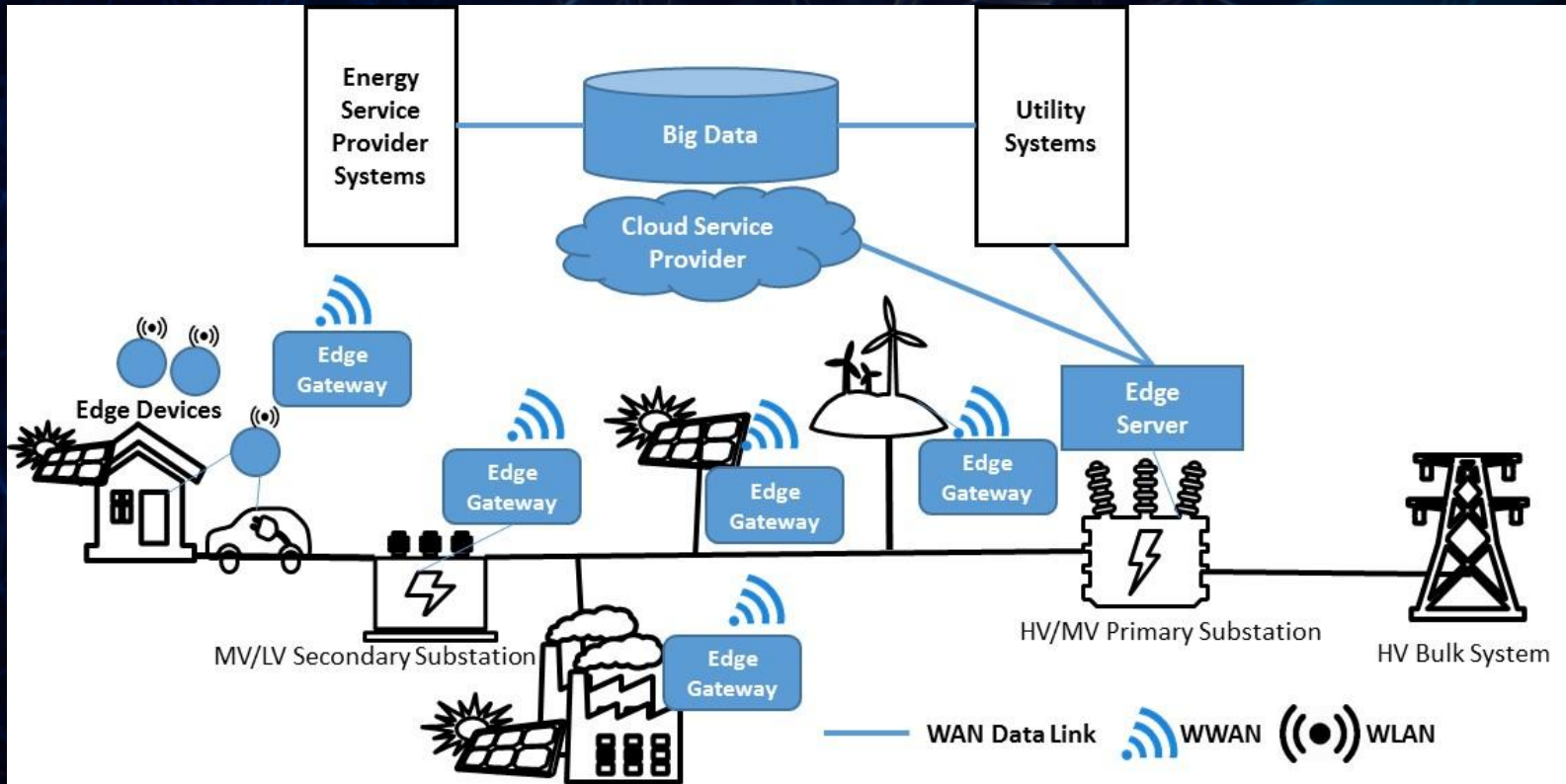
- Intel Edge Server
- OSIssoft PI System

## Centralized Cloud Compute

- Intel Edge Gateway
- OSIssoft PI System



# Example: SMART GRID





# Don't Miss These Things!

- IoT Track in Grand Ballroom A
  - 3:15pm Success Stories in IoT
  - 4:15pm Security in your IoT Networks
  - 5:00pm IoT Partner Showcase
- OSIsoft's Industrial IoT Microsite
  - <http://www.osisoft.com/iiot/>

감사합니다

谢谢

Danke

Merci

Gracias

**Thank You**

ありがとう

Спасибо

Obrigado