



Building a New Path to Supply Chain Operational Excellence

Optimized Operating Envelopes

Presented by Matthew Miller, Transportation Industry Principal

Topics

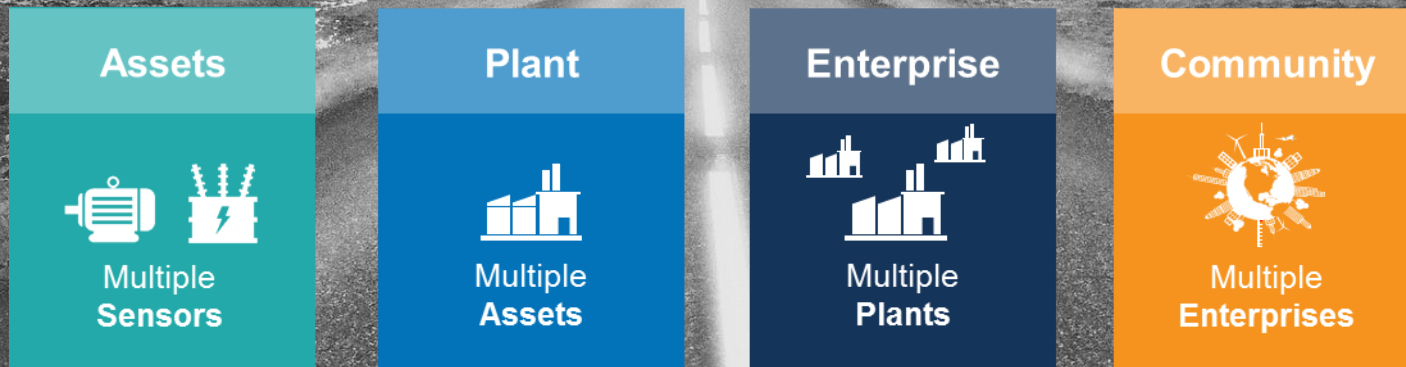
Benefits of the journey

Prospective **Solutions** using proven concepts

Opportunities for more predictable outcomes

Challenges in digitizing the supply chain

Our Vision: Industrial Digital Transformation



We believe People with Data can Transform their world

The Future of Transportation is...Intelligent!

Connected



Collaborative



Sustainable



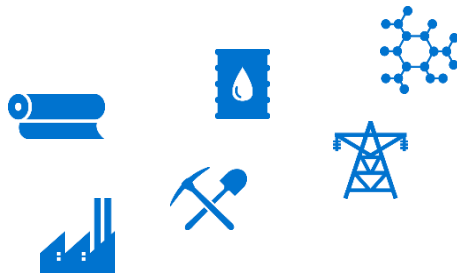
Automated



**All Driven by
Real-time Data!**

OSIsoft in Transportation

- Enterprises



- Transportation & Logistics

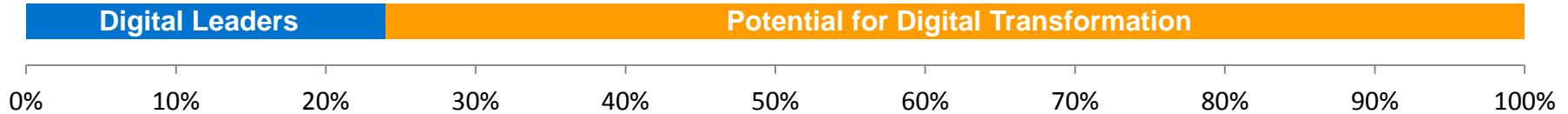


- Data Sciences, Academia & Standards Groups



Digitization of Industry is Underway

% of US GDP



Relatively high digitization

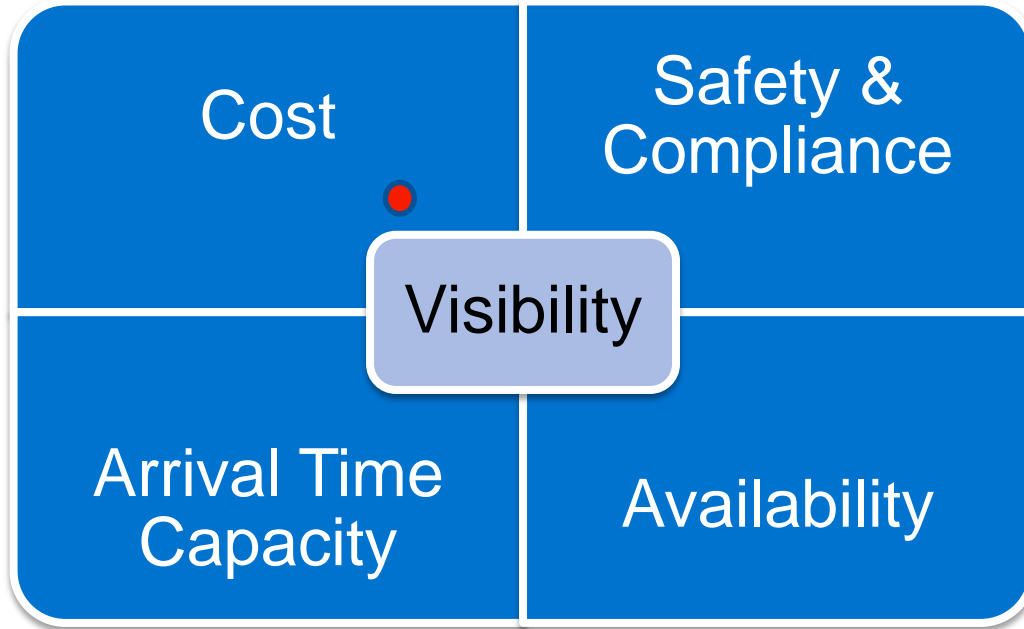


Relatively low digitization



Source: McKinsey, "MGI Digital America" December 2015

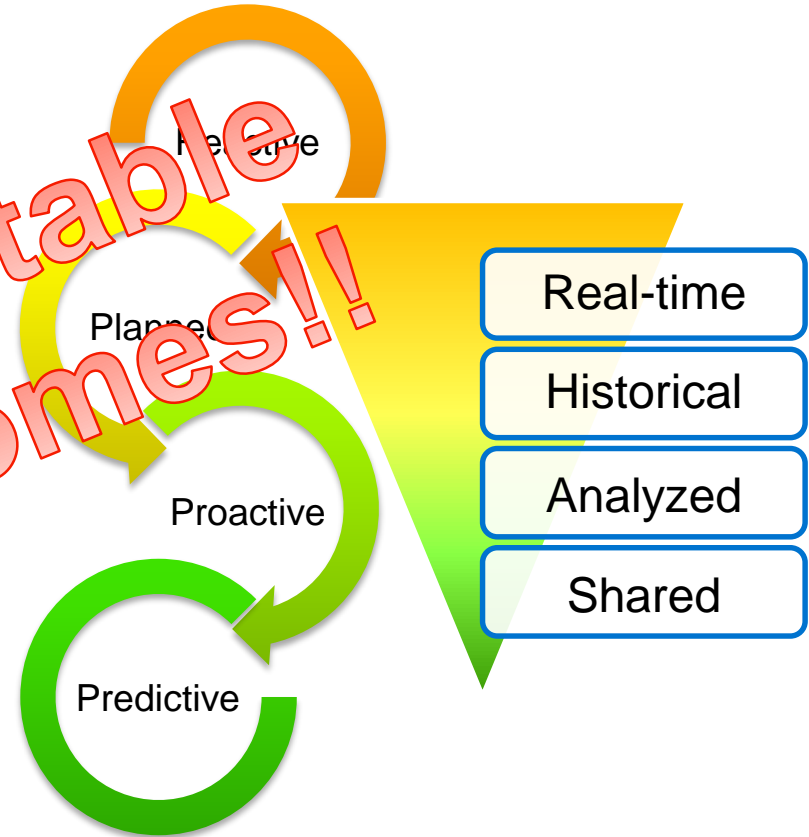
Transportation Challenges – Balancing ROI & Risk



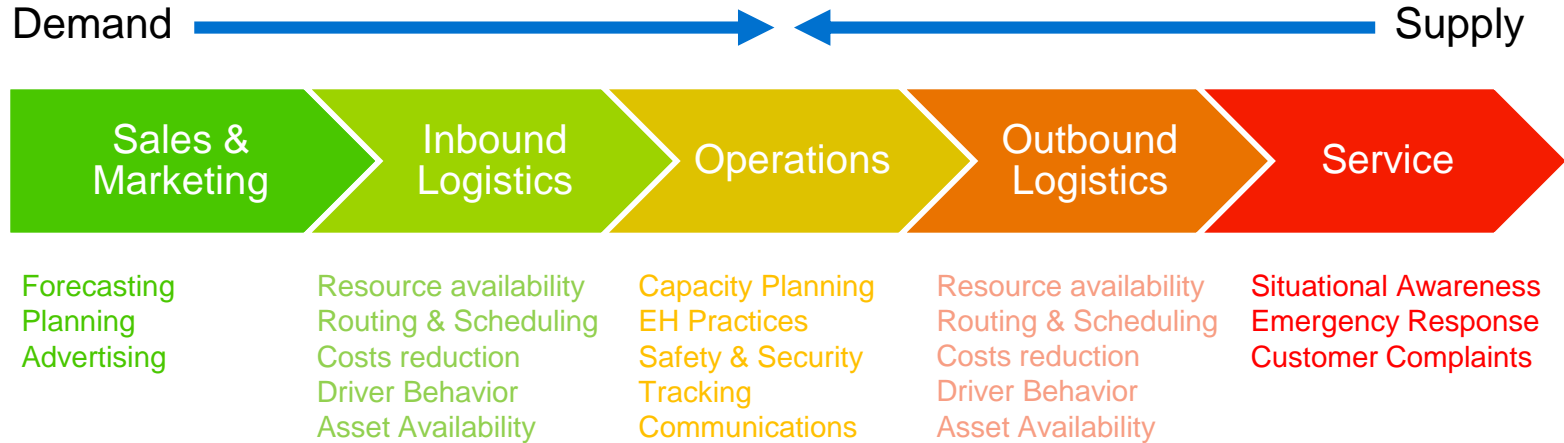
Data-Driven Real-time Operational Excellence

- ✓ Asset Management
- ✓ Network Capacity
- ✓ Energy Management
- ✓ Safety & Security
- ✓ Regulatory Compliance
- ✓ On-time performance

Predictable
Outcomes!!



Challenges for Transportation



Nissan Leaf “Innovationathon”



Optimized Operational Envelopes

Batch revisited... what is a batch?



Master Recipe- BOM + Instructions

Current Recipe – adapted for optimized outcome

Mix Wet Ingredients

Sift Flour

Mix

First Rising

Knead

Second Rising

Bake

Cool

QC

Package

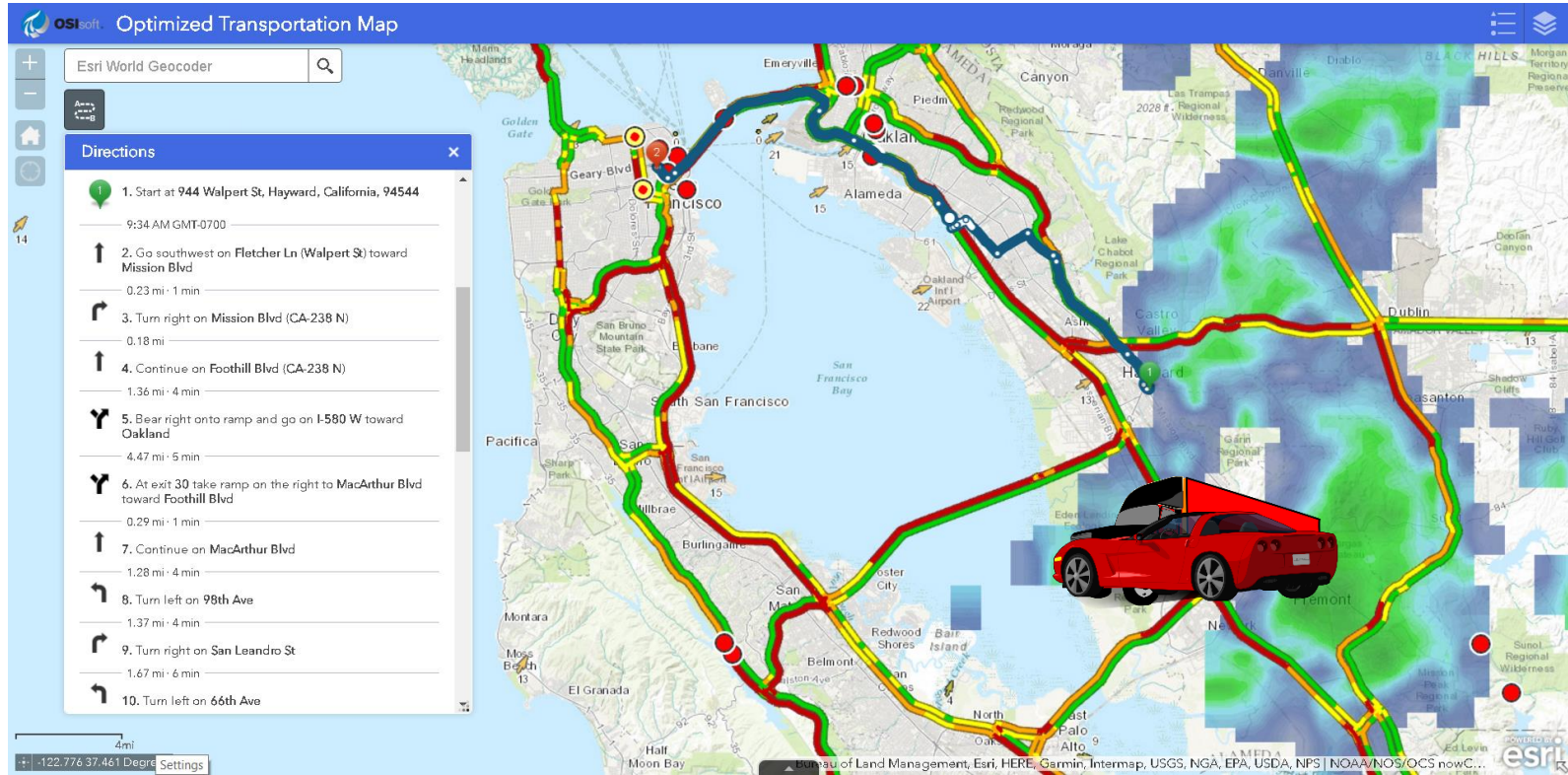
Ship

Recovery Action!

Burner Failure

Rinse & Repeat

What is the State of Transportation Today?

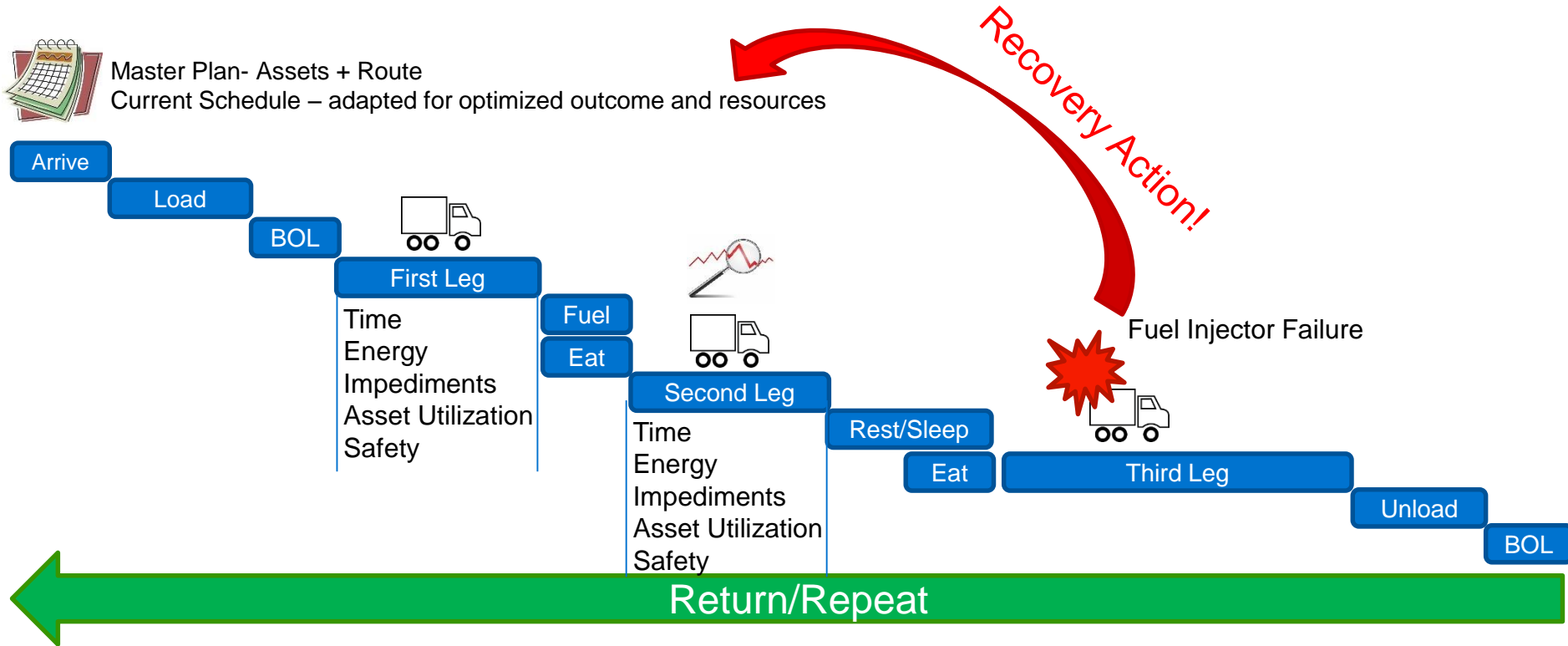


Repeatable Trips

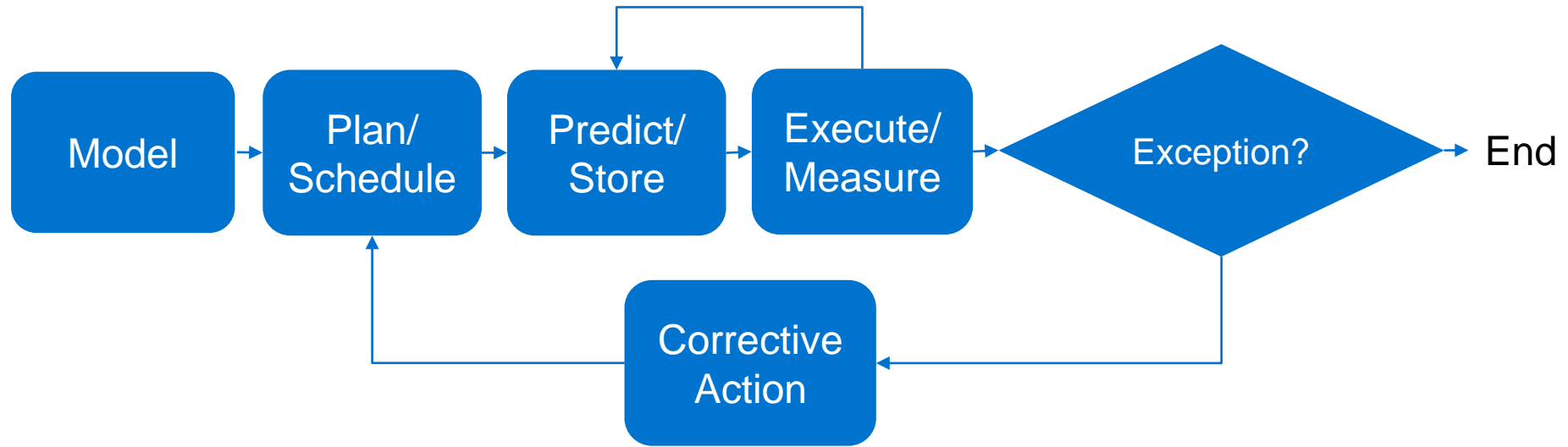


Master Plan- Assets + Route

Current Schedule – adapted for optimized outcome and resources

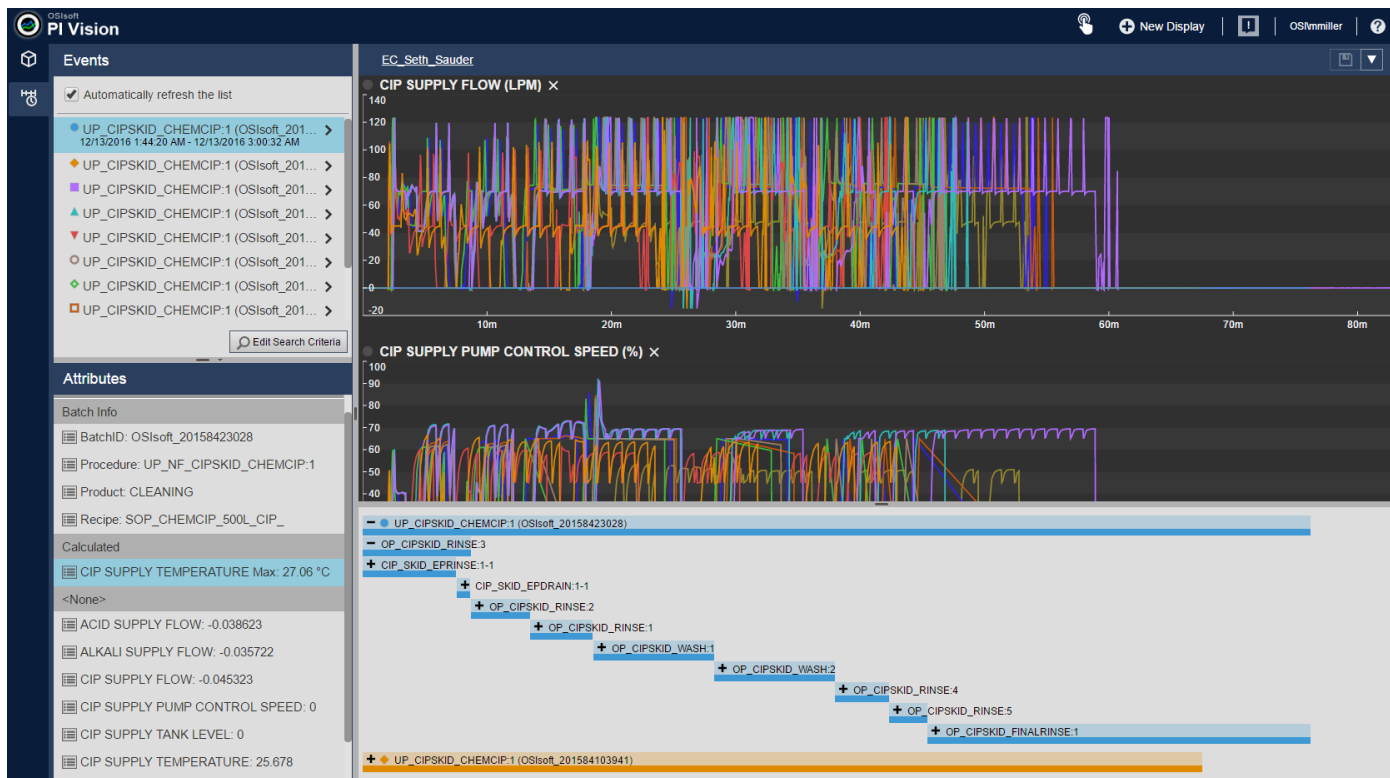


Optimized Operational Envelopes...OOE

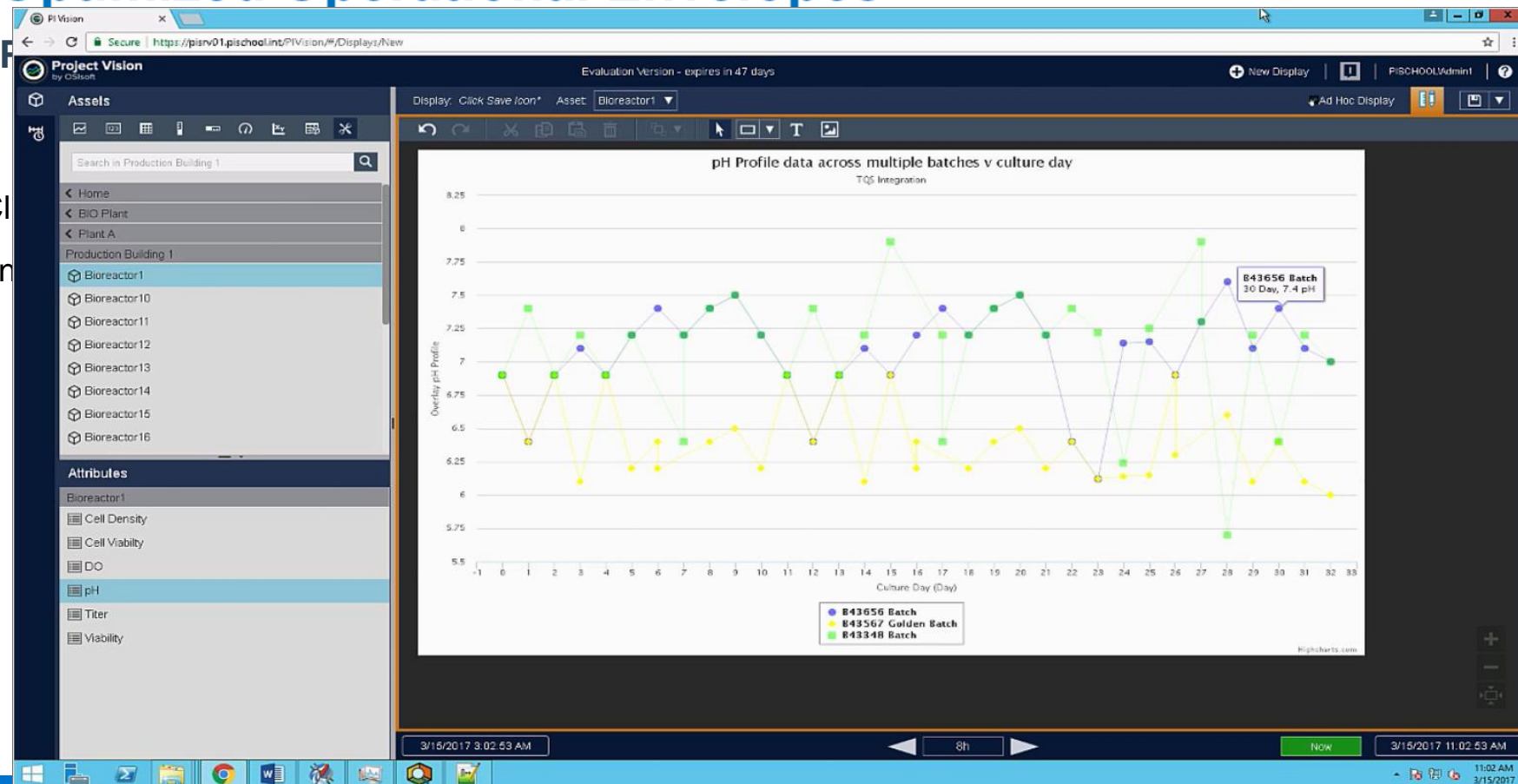


Optimized Operational Envelopes

Concept of Batch Optimization

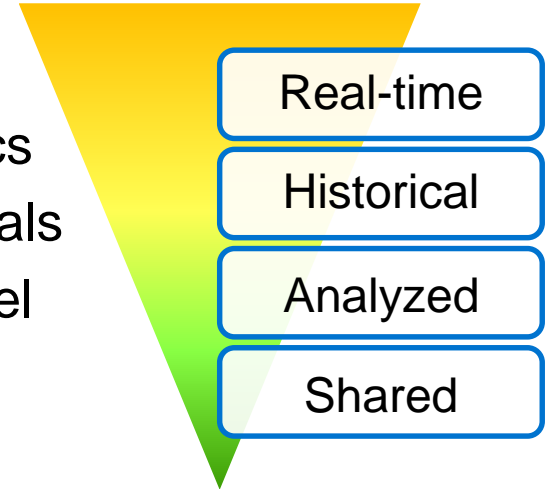


Optimized Operational Envelopes



Predictive Analytics

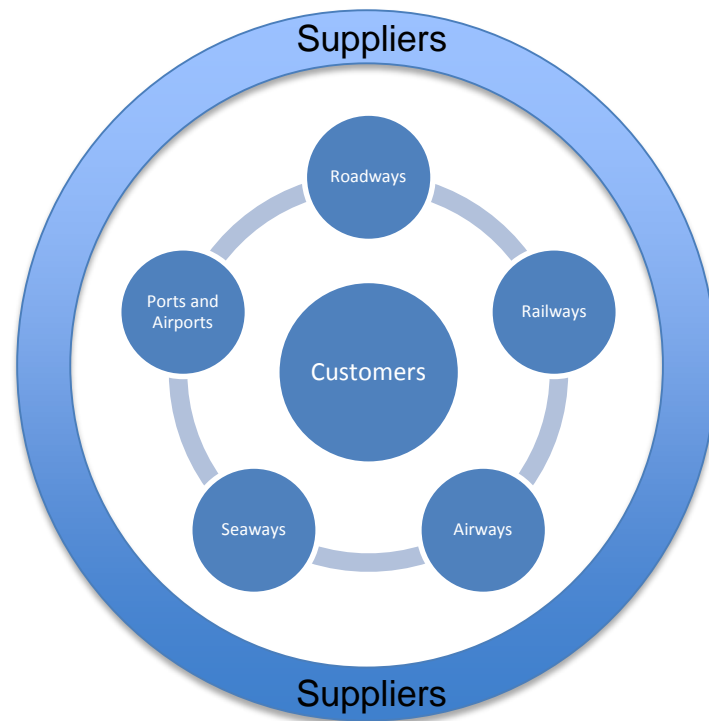
- Understand historical patterns
- Model environmental impacts (traffic, weather construction, impediments etc.)
- Event correlations – parameters, calc's & metrics
- Provide target operation conditions to match goals
- Store predictions to operate and refine the model
- Automatically re-execute plan on exceptions



Sustainable Multi-Modal Goods Movement

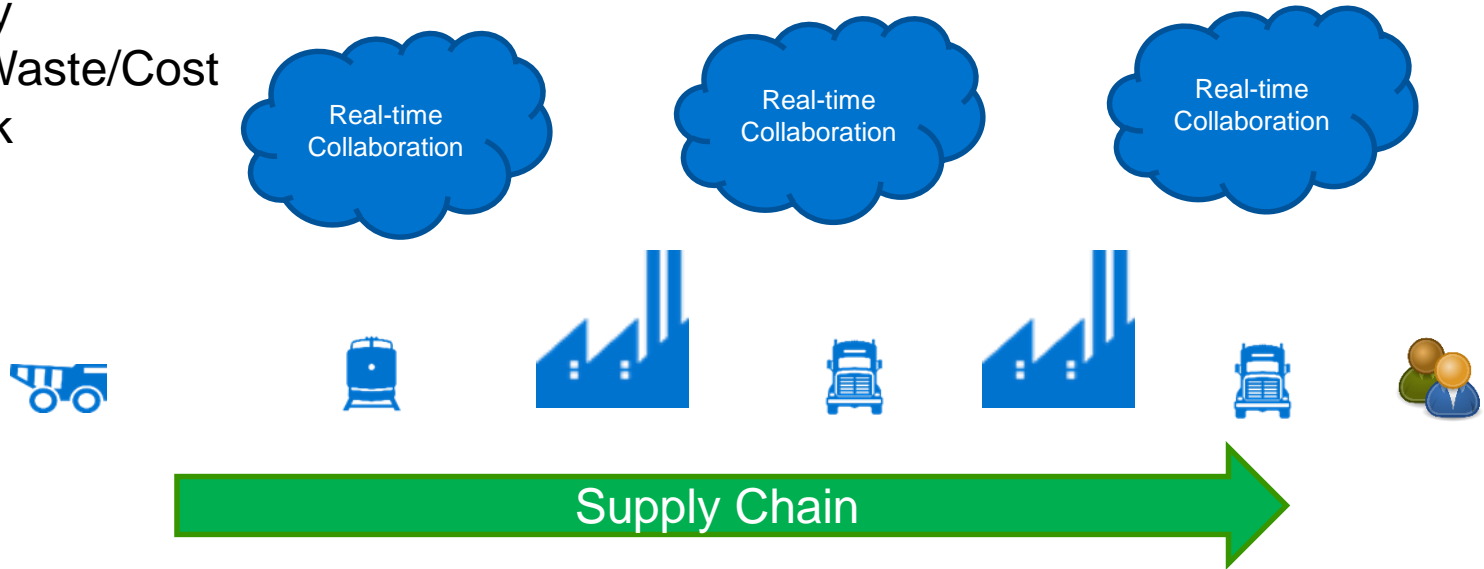
Each link in the value chain:

- Is a connection point
- Is an opportunity to operate more sustainably
- Is an opportunity for efficiency improvements



Impact to Collaborative Ecosystems

- On-time arrivals
- Shorten lead-times
- Resiliency
- Reduce Waste/Cost
- Lower risk



Heavy-Haul Equipment Logistic Strategies Using the PI System

COMPANY and GOAL

ArcelorMittal is Mines Canada on Quebec's North Shore - The world's number one steelmaker hauls and ships over 26 million metric tons of iron ore products every year for the international steel market WANTS to

Transform its mining business with supply chain resilience.



CHALLENGE

Increase speed and quality of logistic decisions to support an increase of 10+ Mt of throughput following expansion.

- Reduction in variable production costs;
- Increase visibility of entire supply chain;
- Resilience in adapting to disruptions and plan changes

SOLUTION

Use the PI System as an Information Hub to “Contextualize” data and manage all aspects of the supply chain.

- Transform data into actionable information;
- Support KPI-based planning to drive business goals;
- Assist in scheduling maintenance at the right time based on market requirements

RESULTS

Throughput targets of 26Mt were met as shipping capacity increased with no infrastructure investments

- Visibility on all strategic, tactical and operational planning challenges;
- Increased production and ore shipments from 23 to 26 Mt with additional revenue of 120M\$ in 2015

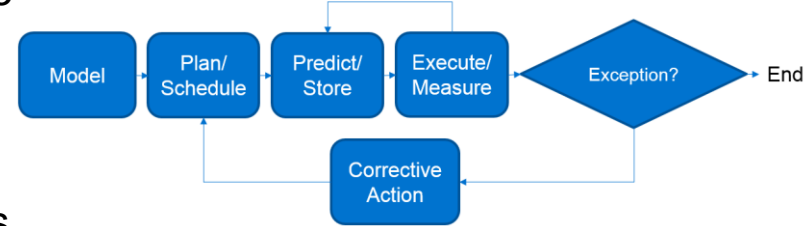
New Path to Supply Chain Operational Excellence

Meet the challenges of digitalization

- ✓ Consistent asset integration across the enterprise
- ✓ Common system of record for all operations to drive improvement
- ✓ Enable advanced analytics – prescriptive & predictive

Consider Optimized Operational Envelopes

- ✓ Repeatable route segments using many assets
- ✓ Better understanding of activities and best practices
- ✓ Optimization tuning dependent on current goals (on-time, fuel, safety, wear)



Collaborate in Real-time across your the supply chain for faster reaction times

Identify top risks to delivering expected outcomes and innovate!

Track Session Overview

Time	Customer/ Partner	Speakers	Title
9:45 AM	Caterpillar	Rob Bradenham	Welcome to the Age of Smart Iron: How technology and innovation is driving change in the marine industry
10:45 AM	Devon Energy Seeq	Don Morrison Jon Peterson	Oil Field Tank Haul-off Improvement through integration of advanced analytics with the PI System
11:30 AM	Adani Ports ECGIT VCS	Yograjsinh Barad Limesh Misal Kamaldeep Singh	Port Performance and Profitability using the PI System, Esri and Analytics
2:15 PM	Barrick Gold	Alejandro Zappa	Mine Haul Truck Health Monitoring System
3:00 PM	Pertamina	Lennard Tambunan	PI System to Drive Refinery Oil Accounting
4:00 PM	Canada Steamship Lines/ BBA	Thierry Pennors Gael Cottet	(O2) – How to Manage our Operations to Ensure Maximum Efficiency and Full Compliance
4:45 PM	Blue Solutions Canada	Jean-Luc Monfort	PI System Application in EV Battery Manufacturing

Questions

Please wait for the **microphone** before asking your questions



State your **name & company**

Please remember to...

Complete the Online Survey for this session

Download the Conference App for OSISOFT Users Conference 2017



- View the latest agenda and create your own
- Meet and connect with other attendees



search OSISOFT in the app store

<http://bit.ly/uc2017-app>

Transportation & Supply Chain Users Group



Networking Lunch Today

Inaugural Meeting 5:30-6:30 PM
Continental 7-9 (Here)



<https://pisquare.osisoft.com/groups/transportation>

Related Techcon Talks

Thursday March 23rd

Time	Title	Location
10:15 AM	PI Integrator for Esri ArcGIS	Imperial B (Hilton)
11:30 AM	Connectivity from A to Z-Roadmap for PI Connectors and PI Interfaces	Imperial B (Hilton)
2:15 PM	Streaming Analytics, Data Lakes and PI Integrators	Imperial B (Hilton)
or	Machine Learning 101	Cyril Magnin III (Park)
3:00 PM	Build a Secure, Public-Facing PI Web API Environment	Cyril Magnin III (Park)
or	Batch and Event Frames	Imperial B (Hilton)
4:30 PM	PI System Distributed Data Collection (IIoT)	Imperial B (Hilton)

OSIsoft Partners in Predictive Solutions



Contact Information

Matthew Miller

mmiller@osisoft.com

Transportation Industry Principal
OSIsoft, LLC



감사합니다

谢谢

Danke

Merci

Gracias

Thank You

ありがとう

Спасибо

Obrigado

Optimized Operational Envelopes create predictable outcomes