






PI Server 2017

Presented by **Janelle Minich, Product Manager**
Stephen Kwan, Product Manager



Data Archive: Recent Enhancements

Feature	2015	
Future/Predictive Data		
Batch to Event Frame Migration		
Transport security		



What's new in Data Archive 2017?

What's new in Data Archive 2017



Improved security between
HA Collective Members



Added Health Incidents for
the Future PI Health Tool



Enhancements to support
other products, bug fixes

HA Collectives: Enhanced Security



Added support for Transport Security

- Now available in Data Archive, between HA Collective Nodes, PI SDK, AF SDK, and API 2016 for WIS



All Collective members must be upgraded



Implemented via Certificates

- You can use your own, or the one we generate for you

Health Incidents

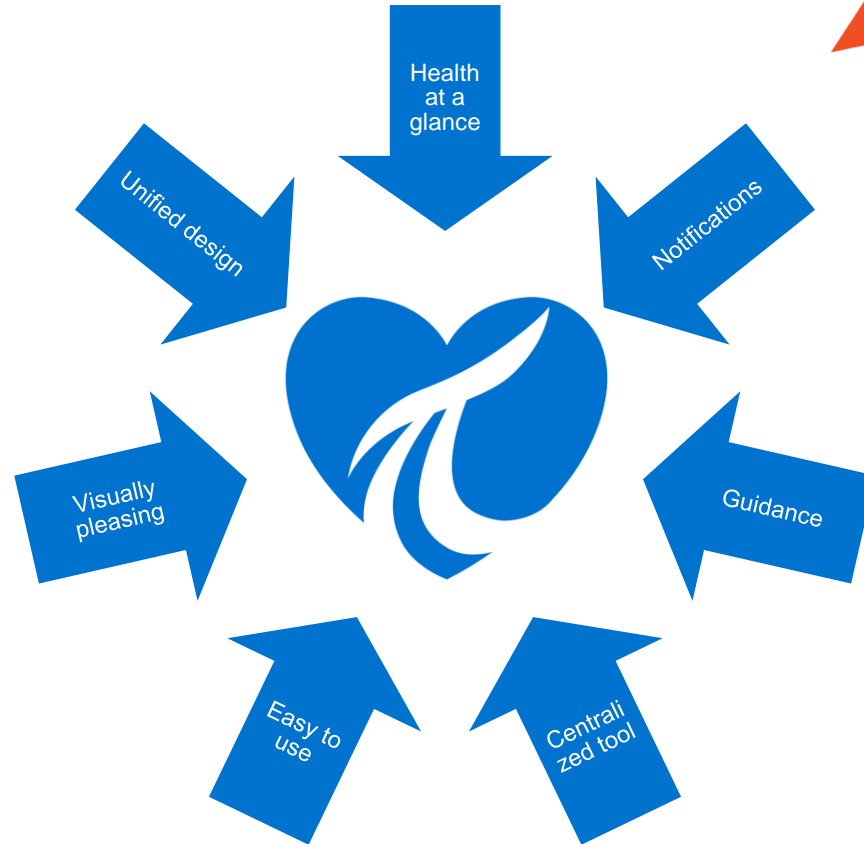
What is a Health Incident?

What Health Incidents will the Data Archive support?

- Corrupted Archives
- Data loss scenarios
 - Examples
 - Value already exists at this time
 - Writing to an archive gap
 - Writing to a read only archive
 - Writing to a corrupt archive
- Backup failures

Where will I see these Health Incidents?

PI System Health



COMING

SOON!

Dashboards

Incidents

Overview

Components

Filter Dashboards

Overview

3

Corporate Houston

Production System

Production Plant Overview

PISRV1

ProdInterface

ProdInterface2

Hogwarts

AreaRelay

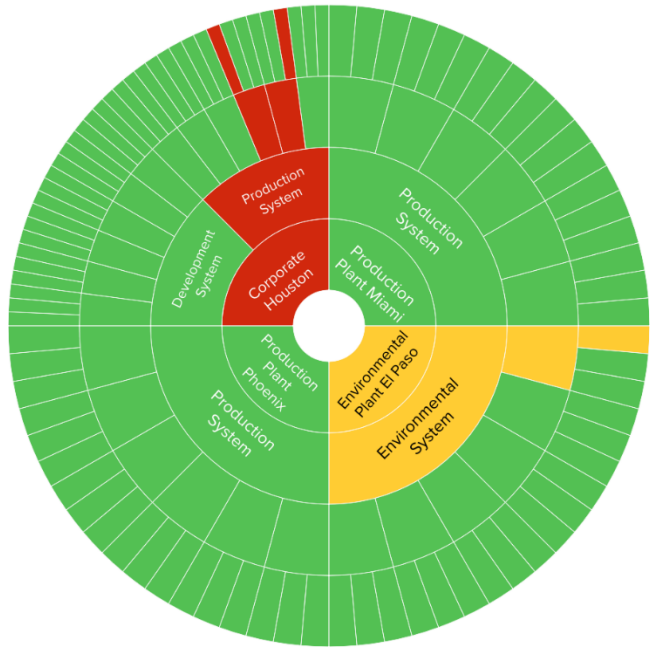
Development System

Production Plant Miami

Environmental Plant El Paso

Production Plant Phoenix

Overview



Health Summary

Healthy

131

Critical

2

Warning

1

Maintenance

0

Recent Incidents

Severity	Description	Machine	Component	Start	End	Duration
	OPC1 Skipped Scans	ProdInterface	OPC Interface	2016-09-14, 09:00:00	-	0
	Buffer Queue Filling	ProdInterface2	OPC Interface	2016-09-14, 09:00:00	-	0
	Low Disk Space	EnvSRVR	PI Server Machine	2016-09-14, 09:00:00	-	0
Show All						

COMING

SOON!

24 hours



Dashboards

Incidents

Incident: Incident Name - 9/15/2017 03:00:00 - In Progress

24 hours



COMING

SOON!

Comments

Incidents

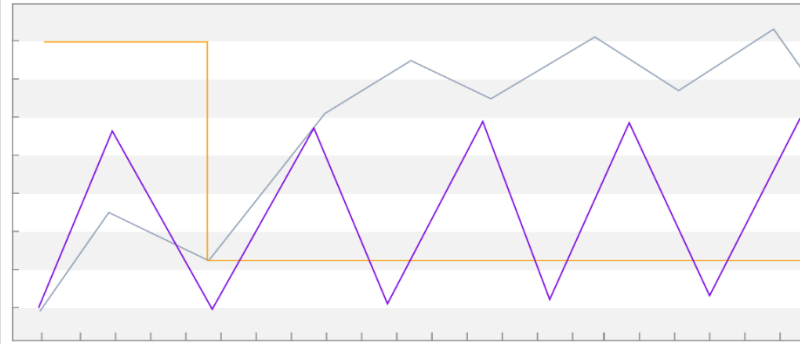
All Incidents

Active Incidents

Recently Viewed Incidents

Incident Name - 9/15/2017 03:00:00

Maintenance

Attribute 1 Value
Attribute 2 Value
Attribute 3 Value

Incident Trigger Expression

Start Trigger:
'Attribute name' > ## and 'Attribute Name' > ###

Incident Trigger Attributes

start value

end value

Attribute Name

Value (unit)

Value (unit)

Attribute Name

Value (unit)

Value (unit)

Incident Event Attributes

start value

end value

Component Attributes

start value

end value

Attribute Name

Value (unit)

Value (unit)

Attribute Name

Value (unit)

Value (unit)

Attribute Name

Value (unit)

Value (unit)

OPCServer.Name

InterfaceNode.Name
OPC1 (Buffering)PI Data Archive - PISVR1
PrimaryPI Data Archive - PISVR2
Secondary

Status

History

This incident has occurred # times in the last 24 hours.

Support

Full text description of error from log or trigger

Possible Causes

- Description of possible cause 1
- Description of possible cause 2
- Description of possible cause 3

Related Resources

Description/title of related resource

[Link](#)

Description/title of related resource

[Link](#)

Component Versions

Component: ##.##.##

Component: ##.##.##

Component: ##.##.##

If you have questions on how to resolve the incident
please contact OSIsoft's Technical Support at:
techsupport@osisoft.com or +1 510 297 5828

Export Support Information



Future Plans

Under Consideration

- Data Quality
 - What does this mean to you?
- Data Retention policies
- Auto Archive management
- Better replication for High Availability
- Smaller footprint for PI Server as a whole
 - Edge device
- More Granular ACL's on tags
- ...



Asset Framework

Major Features	2015	2016
Future Data support	✓	
Excluded and Hidden attributes	✓	
AF Identities and Mappings	✓	
Traits – Limits, Forecasts, Locations		✓
Annotations, Severity, Acknowledgements		✓
New notifications		✓
WSFC support for PI Analysis Service and PI Notifications Service		✓
Manual recalculation	✓	✓
Performance improvement, scalability	✓	✓
New analytic functions, SQC	✓	✓
Enhanced Search	✓	✓



What's new in AF 2017

I want to find my data as quickly as possible ...

- More flexibility – filter based search
- Light weight search
 - Only gets requested fields
- Search by Modify Date and Creation Date
 - *Find all elements modified in the last 5 minutes*
- PI Point search by value/timestamp/status
 - *Find all the PI Points with values that haven't changed since yesterday*



I want to do some aggregations with consistent UOM ...

- Improved UOM handling for totalization
 - *How many barrels of oil were produced from this well yesterday?*
- Rollup analyses
 - Handle different input UOMs
 - When possible, UOMs are converted prior to rollup
 - Keyed off output UOM



I want to do more with event frames ...



- New substitution parameters for %Duration%
 - *Configure an EF attribute with duration of the EF*
- Aggregate event frames
 - Summaries such as min, max, avg, total, etc.
 - Group by discrete values
 - Bin on continuous values
 - *Average temperature when pump was running over the last year segregated by month*

I have late arriving data and need to recalculate quickly ...

- Concurrent backfill/recalculation
 - Better utilization of resources
- Built in safe guard to minimize impact to real time calculations



File View Go Tools Help

Database Query Date Back Check In Refresh

Management

Choose a type

☒ Analyses☐ Notification Rules

Analysis Searches

+ X

All

Enabled

Disabled

Elements

Event Frames

Library

Unit of Measure

Contacts

Management

Analyses

Analyses

0 total analyses selected (0 on this page)

1 - 137 of 137

<input type="checkbox"/>	Status	Element	Name	Template	Backfilling
<input type="checkbox"/>	✓	@ Sudbury Mine\Haul Trucks\HT-105	Alarm Count Critical	Alarm Count Critical	
<input type="checkbox"/>	✓	@ Sudbury Mine\Haul Trucks\HT-104	Alarm Count Critical	Alarm Count Critical	
<input type="checkbox"/>	✓	@ Sudbury Mine\Haul Trucks\HT-103	Alarm Count Critical	Alarm Count Critical	
<input type="checkbox"/>	✓	@ Sudbury Mine\Haul Trucks\HT-102	Alarm Count Critical	Alarm Count Critical	
<input type="checkbox"/>	✓	@ Sudbury Mine\Haul Trucks\HT-101	Alarm Count Critical	Alarm Count Critical	
<input type="checkbox"/>	✓	@ Sudbury Mine\Haul Trucks\HT-105	Alarm Count Critical Last 24h	Alarm Count Critical Last 24h	
<input type="checkbox"/>	✓	@ Sudbury Mine\Haul Trucks\HT-104	Alarm Count Critical Last 24h	Alarm Count Critical Last 24h	
<input type="checkbox"/>	✓	@ Sudbury Mine\Haul Trucks\HT-103	Alarm Count Critical Last 24h	Alarm Count Critical Last 24h	
<input type="checkbox"/>	✓	@ Sudbury Mine\Haul Trucks\HT-102	Alarm Count Critical Last 24h	Alarm Count Critical Last 24h	
<input type="checkbox"/>	✓	@ Sudbury Mine\Haul Trucks\HT-101	Alarm Count Critical Last 24h	Alarm Count Critical Last 24h	
<input type="checkbox"/>	✓	@ Sudbury Mine\Haul Trucks\HT-105	Alarm Count Major	Alarm Count Major	
<input type="checkbox"/>	✓	@ Sudbury Mine\Haul Trucks\HT-104	Alarm Count Major	Alarm Count Major	
<input type="checkbox"/>	✓	@ Sudbury Mine\Haul Trucks\HT-103	Alarm Count Major	Alarm Count Major	
<input type="checkbox"/>	✓	@ Sudbury Mine\Haul Trucks\HT-102	Alarm Count Major	Alarm Count Major	
<input type="checkbox"/>	✓	@ Sudbury Mine\Haul Trucks\HT-101	Alarm Count Major	Alarm Count Major	
<input type="checkbox"/>	✓	@ Sudbury Mine\Haul Trucks\HT-105	Alarm Count Major Last 24h	Alarm Count Major Last 24h	
<input type="checkbox"/>	✓	@ Sudbury Mine\Haul Trucks\HT-104	Alarm Count Major Last 24h	Alarm Count Major Last 24h	
<input type="checkbox"/>	✓	@ Sudbury Mine\Haul Trucks\HT-103	Alarm Count Major Last 24h	Alarm Count Major Last 24h	
<input type="checkbox"/>	✓	@ Sudbury Mine\Haul Trucks\HT-102	Alarm Count Major Last 24h	Alarm Count Major Last 24h	
<input type="checkbox"/>	✓	@ Sudbury Mine\Haul Trucks\HT-101	Alarm Count Major Last 24h	Alarm Count Major Last 24h	
<input type="checkbox"/>	✓	@ Sudbury Mine\Haul Trucks\HT-105	Alarm Count Minor	Alarm Count Minor	
<input type="checkbox"/>	✓	@ Sudbury Mine\Haul Trucks\HT-104	Alarm Count Minor	Alarm Count Minor	
<input type="checkbox"/>	✓	@ Sudbury Mine\Haul Trucks\HT-103	Alarm Count Minor	Alarm Count Minor	
<input type="checkbox"/>	✓	@ Sudbury Mine\Haul Trucks\HT-102	Alarm Count Minor	Alarm Count Minor	
<input type="checkbox"/>	✓	@ Sudbury Mine\Haul Trucks\HT-101	Alarm Count Minor	Alarm Count Minor	
<input type="checkbox"/>	✓	@ Sudbury Mine\Haul Trucks\HT-105	Alarm Count Minor Last 24h	Alarm Count Minor Last 24h	
<input type="checkbox"/>	✓	@ Sudbury Mine\Haul Trucks\HT-104	Alarm Count Minor Last 24h	Alarm Count Minor Last 24h	
<input type="checkbox"/>	✓	@ Sudbury Mine\Haul Trucks\HT-103	Alarm Count Minor Last 24h	Alarm Count Minor Last 24h	
<input type="checkbox"/>	✓	@ Sudbury Mine\Haul Trucks\HT-102	Alarm Count Minor Last 24h	Alarm Count Minor Last 24h	
<input type="checkbox"/>	✓	@ Sudbury Mine\Haul Trucks\HT-101	Alarm Count Minor Last 24h	Alarm Count Minor Last 24h	
<input type="checkbox"/>	✓	f Sudbury Mine\Haul Trucks\HT-105	Alarm Statistics 1	Alarm Statistics 1	
<input type="checkbox"/>	✓	f Sudbury Mine\Haul Trucks\HT-104	Alarm Statistics 1	Alarm Statistics 1	
<input type="checkbox"/>	✓	f Sudbury Mine\Haul Trucks\HT-103	Alarm Statistics 1	Alarm Statistics 1	

Operations

Enable 0 selected analyses

Disable 0 selected analyses

Backfill/Recalculate 0 selected analyses

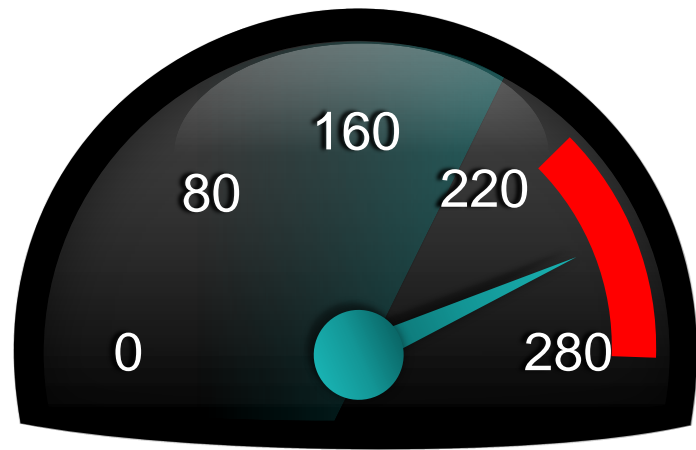
Pending Operations

No pending operations



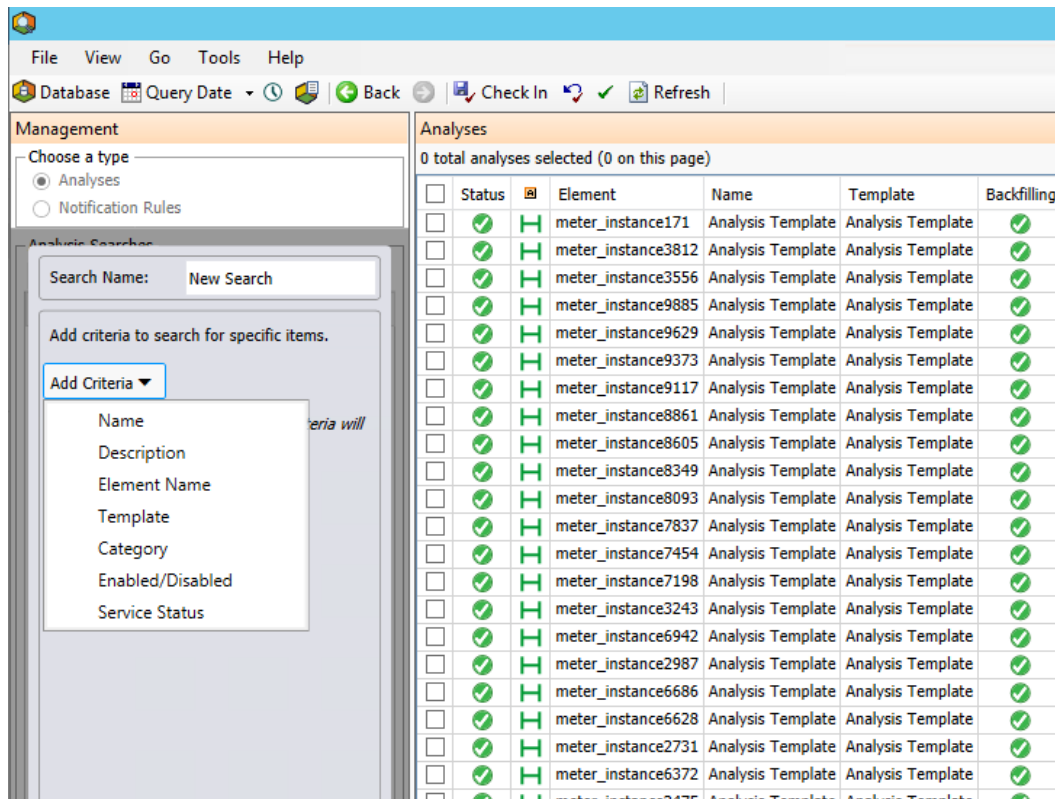
I want to know the worst performing analyses ...

- Analyses are logically grouped for management
- Sorted by lag
- # of skipped calculations
- Time to complete calculation
- Triggering frequency










How do I find analyses and notification rules when I have so many?

- Single UI for managing analyses and notification rules
- Customize searches
- Persisted searches



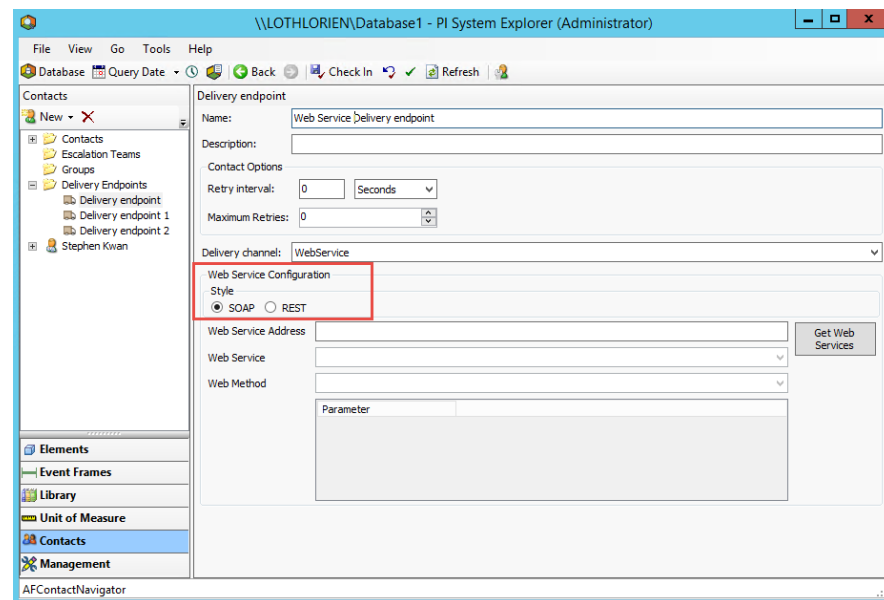
Only authorized persons can perform recalculations ...

- AF Identity to allow users to backfill and recalculation

Name	Permission	Allow	Deny
 Administrators	All	<input type="checkbox"/>	<input type="checkbox"/>
 Engineers	Read	<input type="checkbox"/>	<input type="checkbox"/>
 World	Write	<input type="checkbox"/>	<input type="checkbox"/>
 Notifications	Read/Write	<input type="checkbox"/>	<input type="checkbox"/>
 Asset Analytics	Read Data	<input type="checkbox"/>	<input type="checkbox"/>
 Backfilling	Write Data	<input type="checkbox"/>	<input type="checkbox"/>
 Asset Analytics Recalculation	Read/Write Data	<input type="checkbox"/>	<input type="checkbox"/>
	Subscribe	<input type="checkbox"/>	<input type="checkbox"/>
	Subscribe Others	<input type="checkbox"/>	<input type="checkbox"/>
	Delete	<input type="checkbox"/>	<input type="checkbox"/>
	Execute	<input checked="" type="checkbox"/>	<input type="checkbox"/>
	Annotate	<input type="checkbox"/>	<input type="checkbox"/>
	Admin	<input type="checkbox"/>	<input type="checkbox"/>

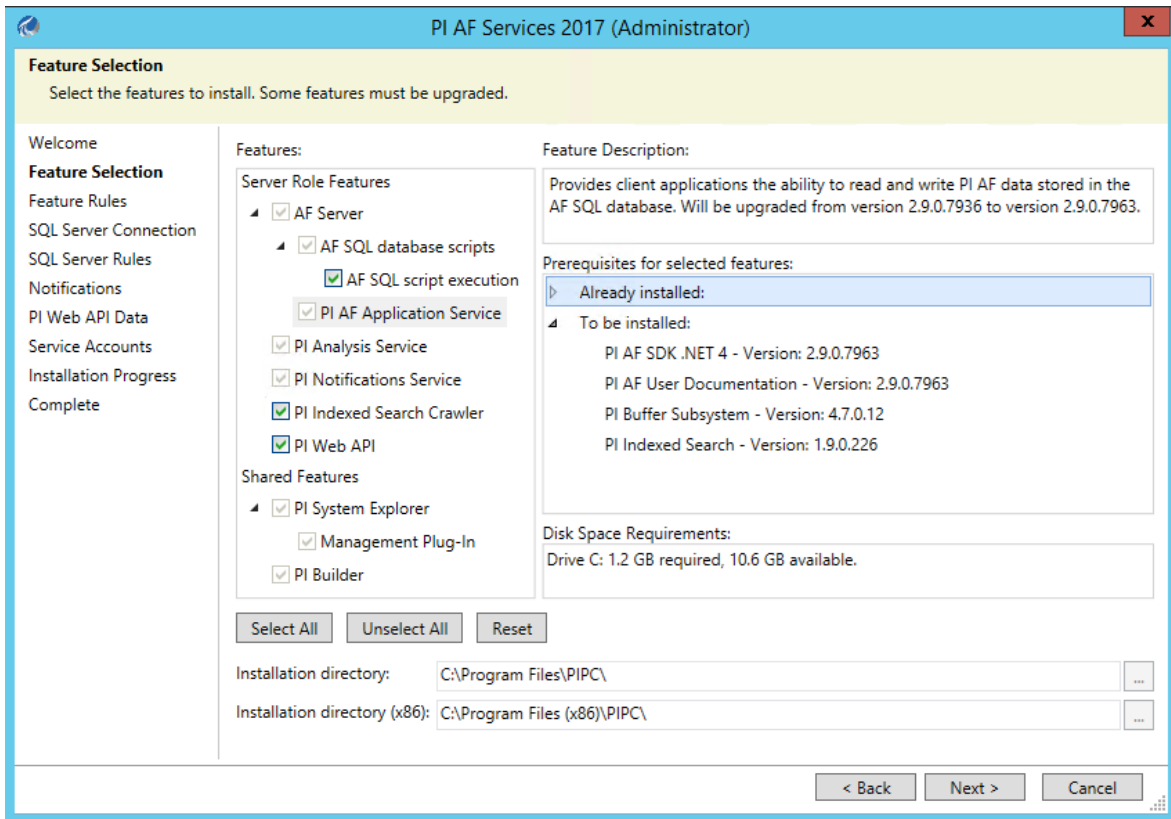
I want to send information from my important events to a web service ...

- SOAP Web service delivery channel
 - Support for complex data type
 - E.g. ERP systems
- REST web service delivery channel
 - E.g. any modern web services



I want a more streamlined installation experience ...

- Single integrated install for AF Services





AF 2017 R2 and Beyond

AF 2017 R2 – Planning Stage

Enhanced Streaming Calculation

- Auto recalculation
- Calculations on event frames

Manageability

- Support PI System Health

Performance and Scalability

- Event frame scale
- Better diagnostics for analyses and notification rules
- Search capabilities

Usability and Features

- Attribute display names
- Hierarchical enumeration sets
- Notifications push to phone

AF 2018 and Beyond – Research

Enhanced Streaming Calculation

- Integrate with 3rd party analytics – MATLAB, R, etc.

Manageability

- Enterprise deployment
- Web based configuration

Performance and Scalability

- PI Analysis Service scaling
- PI Notifications Service scaling

Usability and Features

- Incorporate Data Quality into the PI System
- Flag stale data
- Identity provider



**Have an idea how
to improve our
products?**

**OSIsoft wants to
hear from you!**

<https://feedback.osisoft.com/>



Contact Information

Janelle Minich

janelle@osisoft.com

Product Manager

OSIsoft, LLC



Stephen Kwan

skwan@osisoft.com

Product Manager

OSIsoft, LLC



Questions

Please wait for the **microphone** before asking your questions



State your **name & company**

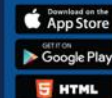
Please remember to...

Complete the Online Survey
for this session

Download the Conference App for
OSIsoft Users Conference 2017



- View the latest agenda and create your own
- Meet and connect with other attendees



HTML

search **OSISOFT** in the app store

<http://bit.ly/uc2017-app>

감사합니다

谢谢

Danke

Merci

Gracias

Thank You

ありがとう

Спасибо

Obrigado