

Food & Beverage and Life Sciences

From the OSIsoft Life Sciences and Food & Beverage team

Your hosts today



Jeff van Pelt

- Food & Beverage Principal
- Responsible global industry strategy, segment development, thought leadership and ensuring customers drive value from their technology investments. Van Pelt is a 30 veteran in the consumer products industry in a variety of roles. Prior to joining OSIsoft, he held industry executive positions at IBM and SAP.



Petter Moree

- Life Sciences Principal
- OSIsoft since 2015 Principal for Life Sciences. Petter is based in southern Sweden and works globally with most of the leading pharmaceutical companies and strategic partners in the OSIsoft partner ecosphere. Petter is a Data Scientist from Umeå University, Sweden. Petter worked for 17 years at Umetrics with customers in various markets for example Pharmaceutical, Pulp & Paper, Automotive, Semicon and chemical and with applications such as PAT, QbD, early fault detection, predictive analytics, MPC and CPV.

Your hosts today



Isabelle Lacaille

- Food & Beverage Industry Champion

Isabelle Lacaille is a Systems Engineer at OSIsoft. She helps customers get value out of their data, helping them make better decisions. Isabelle specializes in the Pharmaceutical and Food & Beverage industries, and has a passion for Data Science. She holds a Master's degree in Chemical Engineering from McGill University.



Paula Baquer

- Life Sciences Industry Champion

Paula Baquer is a Systems Architect at OSIsoft, based in EMEA. She helps customers define enterprise architectures and best practices to implement the PI System in order to ensure scalable solutions. Paula specializes in the Life Science industry, and has a passion for data driven solutions. She holds a Master's degree in Chemical Engineering from Imperial College London.

Our Agenda

Slot	Talk	Speaker(s)
9:00 AM – 9:30 AM	Benefits from Continuous Contextualization of OSIsoft PI Data	James Li (Abbott Nutrition)
9:45 AM – 10:30 AM	Using the System Connector to Build a Strong Security Posture	Gustav Green (Biogen)
10:45 AM – 11:30 AM	Pursuit of Operational Excellence at The Hershey Company	Russell Gregg (The Hershey Company)
11:45 AM – 12:30 PM	A Case Study in Biopharmaceutical Data Analytics: Using Asset Framework and Event Frames for MVDA	Will Penland (Boehringer Ingelheim) Chris McCready (Sartorius Stedim Data Analytics)
2:30 PM – 3:00 PM	Handling Dynamic Infrastructures and Visual Analytics	Thorsten Ulbricht (Roche) Philipp Sutter (Octavesoft GmbH) Piero Steinger (OctaveSoft GmbH)
3:15 PM – 4:00 PM	Increasing Yield in Pharma using SmartFactory Rx Application Platform and the PI System	DeShawn Jordan (Janssen Vacaville) Ashley Howard (Applied Materials)
4:00 PM – 4:45 PM	Brewing Beer the Smart Way	Kyle Kotaich (Deschutes Brewery)
4:45 PM – 6:30 PM	PUG – Pharma and Food & Beverage	Several
7:30 PM – 22:30 PM	Industry Dinners, Preregistrations needed, talk to us during breaks	1. Pharma & Spec Chem – China Live 2. Food & Bev – Marlowe

Business Impacts for Consumer Products Companies



Process Productivity

Change overs

Distributed Supply Chains

Batch Management

Operational Excellence



Quality Mgmt

Regulatory Compliance

CMA and CPP influence

LIMS and QMS (CAPA)
Integration with real-time
data

Predicted Quality



Energy Efficiency

Managing environmental
impact

Sustainability initiatives

Reducing Utility
Consumption and Waste



Asset Health

Overall Equipment
Effectiveness (OEE)

CMMS Integration with
real-time data

CdM and Predicted
Maintenance

Customer Use Cases: Summary



Process Productivity

DESCHUTES
BREWERY.

HERSHEY'S


Irish Distillers
Pernod Ricard



Quality Tracking

Tyson

 **Abbott**



Energy Efficiency



Kellogg's



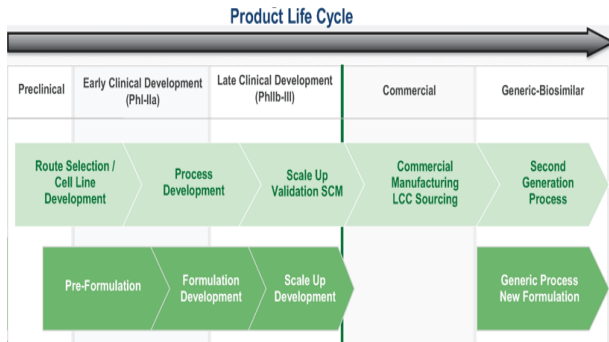
Asset Health

TATE & LYLE


ADM

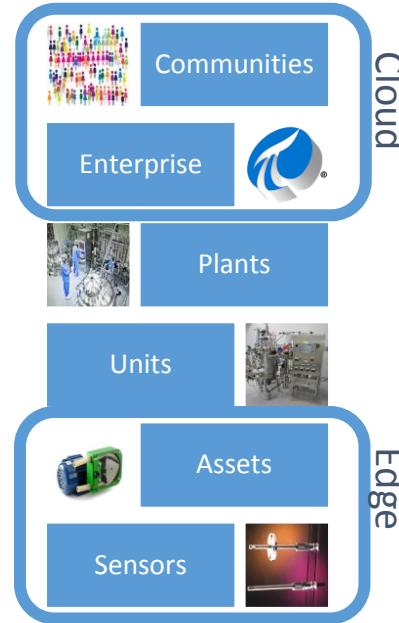
Three Dimensions in the pharmaceutical operation

Time to market, KM & Development

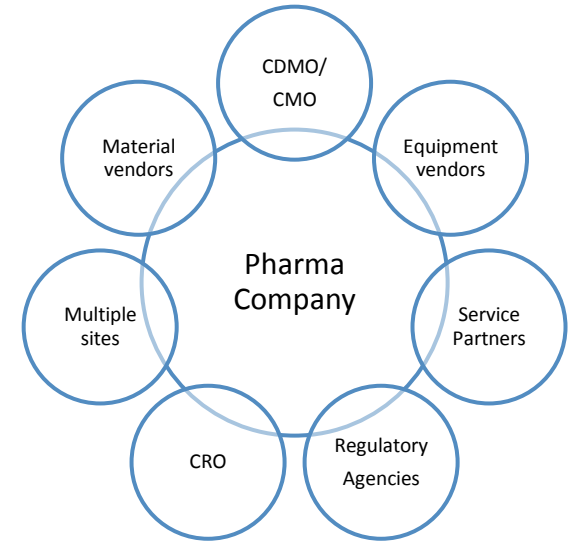


Data Integrity is essential in all 3 dimensions

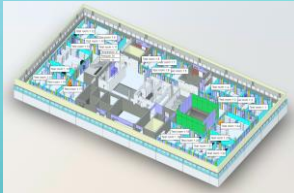
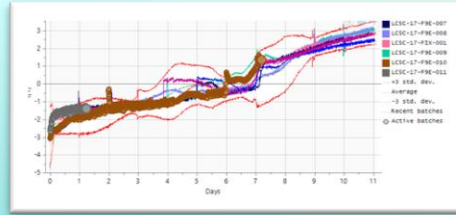
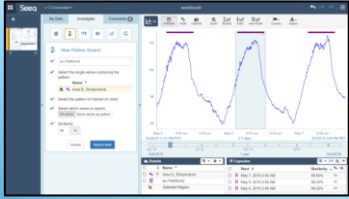
Corporate: Edge to Premise to Cloud



Community of supply chain, service and compliance



Pharma and Advanced Analytics



PUG Chairperson – Anthony Narag, Shire

- Anthony has been the Chairperson for the PUG since 2016
- To be elected today at 6PM
 - New Chairperson for Steering Committee
 - Two new Steering Committee members



Pharma Users Group – PUG 450+ members

- 4:45 PM – Introduction (15 min) – Anthony
- 5:00 PM – Community-chosen presentation (30 min)
 - MATLAB integration with PI Analytics and PI AF (presentation/demo)
- 5:30 PM – Data Innovation session (40 min)
 - 20 minute presentation on “Specialty Chemicals” use case
 - 20 minute Q&A with Deschutes
- 6:10 PM – Pharma - Elections & Future meeting planning (30 min)
- 6:10 PM – *F&B – form their first Steering committee*
- 7:30 PM – Industry Dinners!

*<https://pisquare.osisoft.com/groups/life-sciences>

OSIssoft PI World Morning Run



Industry Dinners 7.30PM

Meet in Hilton Lobby at 7PM for common walk

Pharma & Spec. Chemical

- ChinaLive
- 644 BROADWAY, SAN FRANCISCO CA 94133



Food & Beverage

- Marlowe
- 500 Brannan St, San Francisco, CA 94107

